

**Project:**  
 Williamson Co Jail - Traywasher  
 Chris Watts  
 306 West Fourth Street  
 Georgetown, TX 78626

**From:**  
 Cook's Direct  
 Grant Hall  
 27725 Diehl Rd.  
 Warrenville, IL 60555  
 800-956-5571  
 630-948-5771 (Contact)

Job Reference Number: 78626-2V

Source well Contract ID: #063022-COK

Item	Qty	Description	Sell	Sell Total
1	1 ea	<b>TRAY WASHER</b> Insinger Model No. TRAC 878 RPW Trac Tray Washer, high temp. sanitizing, triple tank with prewash, approximately 878 trays/hour capacity, automatic tank fill, stainless steel frame, legs & feet, electric immersion or steam injector tank heat, tray unload table Dimensions 69(h) x 130(w) x 27(d)	\$63,285.21	\$63,285.21
	1 ea	SureFire® start-up & check-out service, standard		
	1 ea	Right to left operation		
	1 ea	Electric immersion tank heat, 16 kw		
	1 ea	208v/60/3-ph, 67.3 amps		
	1 ea	Electric booster heater, 36 kw, 70 degree rise	\$5,366.61	\$5,366.61
	1 ea	Contact factory for voltage/amp loads		
	1 ea	WS50 Water Softener	\$1,971.76	\$1,971.76
	1 ea	SR050 Scale inhibitor	\$485.20	\$485.20
	1 ea	Rear panel	\$839.00	\$839.00
	1 ea	Side panel	\$477.17	\$477.17
	1 ea	Stainless steel panels all sides	\$1,226.11	\$1,226.11
	8 ea	Security package with undermesh requires panels all sides (per foot)	\$205.41	\$1,643.28
		<b>4-6 Week Leadtime</b>		
	1 ea	Cook's UTILITY VERIFICATION		



**\*\*Please Initial one of the following options:\*\***

Utilities are Correct as Specified: \_\_\_\_\_

Utilities are Correct as Noted Below: \_\_\_\_\_

Item	Qty	Description	Sell	Sell Total
------	-----	-------------	------	------------

Weight: 1100 lbs total

**ITEM TOTAL: \$75,294.34**

2	1 ea	<b>TRAY DRYER</b>	\$18,301.47	\$18,301.47
---	------	-------------------	-------------	-------------



Insinger Model No. TD 321-3  
 Tray Dryer, top mounted NEMA 12 control panel, unique air wiper design, stainless steel frame, legs & feet, 10 HP (blower) & 1/15 HP (conveyor)

1 ea	SureFire® start-up & check-out service, standard			
1 ea	208v/60/3-ph, 31.0 amps			
1 ea	Security package	\$2,772.97		\$2,772.97
1 ea	Cook's UTILITY VERIFICATION			

**\*\*Please Initial one of the following options:\*\***

Utilities are Correct as Specified: \_\_\_\_\_

Utilities are Correct as Noted Below: \_\_\_\_\_

Weight: 700 lbs total

**ITEM TOTAL: \$21,074.44**

3	1 ea	<b>SOILED DISHTABLE</b>	\$7,775.51	\$7,775.51
---	------	-------------------------	------------	------------



Advance Tabco Model No. CUSTOM  
 Dishtable, soiled, u-shaped, attaches to right of dish machine operator, 59" x 108" x 71" with landing, 10-1/2"H backsplash, with pre-rinse sink, 16/304 stainless steel legs with crossrails front-to-back, 14/304 stainless steel, stainless steel bullet feet, Includes prerinse basket with slide bar (slide bar only when K-461 or K-461A disposer adapter is specified)  
 Dimensions 44.5(h) x 108(w) x 72(d)

1 ea	SPECIFY DISH MACHINE BRAND & MODEL to ensure proper fit, refer to attached document (AQ only) or consult <a href="http://www.advancetabco.com">www.advancetabco.com</a> for compatibility listing. Certain dish machines require modifications at additional cost not shown here			
1 ea	K-508A Supply rolled rim in lieu of opening	\$167.38		\$167.38
1 ea	K-495 Turn Down Backsplash (includes wall clips)	\$109.86		\$109.86
1 ea	K-23A Sink or dish table legs welded to leg gussets under table top and to cross rails (and optional undershelf if ordered), shipped set up and crated (per sink)	\$349.38		\$349.38
1 ea	DTA-53 Pre-Rinse Faucet, 8" OC splash-mounted, includes: spray	\$551.50		\$551.50

Initial: \_\_\_\_\_

Item	Qty	Description	Sell	Sell Total
		valve & hose, riser, wall bracket, heavy duty hose spring, lead free		
	1 ea	7-PS-10 P-trap, heavy duty, 1-1/2", 17 gauge	\$88.17	\$88.17
	1 ea	K-5 Drain, twist operated, 2" NPT & 1-1/2" IPS outlet connections	\$110.00	\$110.00
	1 ea	K-4 Support Bracket, for lever waste drain handle, (1) support required for each lever drain	\$50.00	\$50.00
		<b>Free Freight</b>		
		Weight: 566 lbs total		
			<b>ITEM TOTAL:</b>	<b>\$9,201.80</b>
4	1 ea	<b>INSTALLATION</b>	\$11,500.00	\$11,500.00
		Cook's		
		**REMOVAL OF EXISTING INSINGER TRAYWASHER AND REPLACEMENT WITHINSINGER TRAYWASHER		
	1 ea	Haul away and disposal of existing units.	\$2,300.00	\$2,300.00
	1 ea	1. Install new Traywasher dishmachine along wall with blower dryer. Connect to utilities and venting. Start up and check operation. 2. Install new clean dishtable 3. Install new soiled dishtable.		
	1 ea	WATER SOFTENER INSTALL Installation of Water Softener	\$2,300.00	\$2,300.00
			<b>ITEM TOTAL:</b>	<b>\$16,100.00</b>
			Merchandise	\$121,670.58
			Freight	\$3,967.51
			Total	\$125,638.09

\*\*Sales tax will be added to the final invoice unless a valid tax exempt certificate is on your account file.

\*\* Customer is responsible for unloading equipment from the truck onto the dock. Two Pallet jacks are recommended.\*\*

**Quote Approval**

By affixing their signature to this document, the undersigned hereby affirms the accuracy of the provided information. The signee acknowledges that all utilities and dimensions specified are compatible with the operational requirements at the designated facility. Furthermore, it is confirmed that the listed equipment is suitable for passage through doorways, hallways, and vestibules from the receiving area to the kitchen.

In the event of equipment returns attributable to inaccuracies in utilities or measurements, the signee acknowledges the imposition of a manufacturer restocking fee, in addition to the applicable return shipping charges.

**Receiving Policy and Guidelines:**

Prior to signing for the delivery, it is crucial to thoroughly inspect and count all cartons. Note any shortages, damages, or problems on the delivery receipt. In case of visible damage, refuse damaged boxes by checking for crushed corners, wetness, or punctures. If the delivery includes equipment, inspect all parts before signing.

If a full inspection is not possible, please make a note on the bill of lading that you will inspect at a later time (within 24 hours of receipt).

For refused shipments, the customer is responsible for full freight charges and applicable fees in both directions, unless the refusal is due to shipment damage or a shipping error made by CooksDirect.com.

Most items are eligible for return within a 30-day period from the customer's receipt of the shipment. Depending on the manufacturer, a restocking fee of 15% to 50% may be applicable. Return freight charges may also apply based on the manufacturer's policy. For inquiries regarding specific return policies for a particular manufacturer or product, kindly reach out to our Customer Service team at 1-866-506-3048 or via email at [customerservice@cooksdirect.com](mailto:customerservice@cooksdirect.com).

Please review the following criteria for returning an order:

1. Returned items must be unused, undamaged, and returned intact with original materials.
2. Special ordered or custom items cannot be returned.

Returns must be initiated within the first 30 days of receipt. Orders exceeding the 30-day return window are not eligible for returns through Cook's Direct. For product issues, please contact the manufacturer, as most large equipment is covered by a 1-year warranty.

**Shipping & Delivery Information:**

To ensure your order is processed in a timely manner please provide the following information along with your signature:

**Delivery Address**

**Contact Name:**

**Phone Number:**

**Receiving Hours:**

**Receiving Dock Onsite (Y/N):**

(If there is no dock onsite, additional fees for lift gate service may apply)

**Forklift Onsite (Y/N):**

Acceptance: \_\_\_\_\_ Date: \_\_\_\_\_

Printed Name: \_\_\_\_\_

Project Grand Total: \$125,638.09

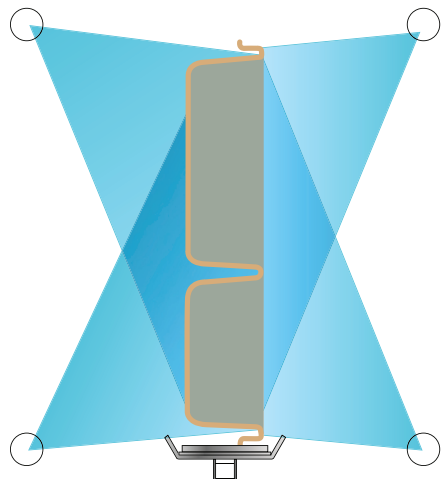


Project \_\_\_\_\_ CSI - 11400 \_\_\_\_\_  
 Item \_\_\_\_\_ Approval \_\_\_\_\_  
 Quantity \_\_\_\_\_ Date \_\_\_\_\_

# TRAC 878

## Automatic Triple Tank Tray Washer

- Automatic conveyor, triple tank tray washer with recirculating pre-wash, wash and rinse and fresh water final rinse.
- 197 gallons/hour final rinse consumption
- Capacity is up to 878 trays per hour (based on a 15" tray)
- Wide insulated swing-out doors



Insinger's tray washers were developed specifically to optimally clean and sanitize ware by reaching all corners and crevices with a vertical spray.

### STANDARD FEATURES

- Tank heat: 16 kW electric immersion heater or steam injector
- Capillary thermometers for wash and rinse
- In-line thermometer for final rinse
- Vacuum breaker on all incoming water lines
- Manifold clean-out brush
- Vents with adjustable damper controls
- SureFire® Start-Up & Check-Out Service
- Single point electrical connection: motors, controls and tank heat (Booster requires a separate connection)
- Inspection doors
- S/S frame, legs and feet
- S/S front enclosure panel
- Automatic tank fill
- Low water protection
- Detergent connection provision
- Top mounted NEMA 12 control panel
- Simplified scrap screen design
- Wide insulated swing-out doors
- Door safety switch
- Standard frame TEFC motors
- Override switch for de-liming
- End caps/pipe plugs secured to prevent loss
- Tray unload table

### OPTIONS

- Stainless steel steam coil tank heat
- Steam booster
- Electric booster
- Pressure reduction valve and line strainer
- Chemical sanitizer injector package for low temperature operations (pump by others)
- Security package
- Insulated hood
- Tray Dryer
- Tray Stacker

TRAC 878

#### AUTOQUOTES





# TRAC 878

## Automatic Triple Tank Tray Washer

Capacity Per Hour	878 trays
Tank Capacity	11.2 gallons (pre-wash) 15.3 gallons (wash) 11.5 gallons (rinse)
Motor Size	1/2 hp (pre-wash) 3 hp (wash) 2 hp (rinse) 1/8 hp (conveyor)
Electric Usage	8 kW wash tank 8 kW rinse tank 24 kW booster 40° rise 36 kW booster 70° rise
Steam Consumption at 20 psi min.	54 lbs./hour tank 70 lbs./hour booster 40° rise 122 lbs./hour booster 70° rise
Final Rinse Peak Flow at 20 psi min.	3.28 gallons/minute
Final Rinse Consumption at 20 psi min.	197 gallons/hour
Exhaust Hood Requirement	100 CFM Load 300 CFM unload
Peak Rate Drain Flow	23 gallons/minute
Shipping Weight	1100 lbs.

Machine Electrical*		
Motors, Controls, Tank Heat	Steam	Electric without booster
208/3/60	22.7	67.1
240/3/60	20.6	59.0
480/3/60	12.5	36.9
380/3/50	10.2	29.4

\*Booster heater wired separately. Machine load only listed above.

### SPECIFICATIONS

**CONSTRUCTION-** Hood and tank constructed of 16 gauge type 304 S/S. Hood unit of all welded seamless construction. S/S frame, legs and feet. All internal castings are non-corrosive lead free nickel alloy, bronze or S/S.

**DOORS-** Wide die formed 18-8 type 304 S/S front inspection doors hinged with stainless steel pins. A triple ply leading edge on the door channels made of S/S with no plastic or nylon sleeves or liners used. Door stop built into frame.

**CONVEYORS-** One S/S roller conveyor chain with tray cradles. Width between guide rails is factory-adjustable from 1.5" to 3.7". Conveyor accommodates trays up to 14" high. Conveyor drive system includes direct drive gear motor with frictionless, trouble-free overload system. Trays conveyed automatically through washing and rinsing systems. Powered by independent conveyor motor.

**PUMP-** Centrifugal type "packless" pump with a brass petcock drains. Ceramic seal and a balanced cast impeller on a precision ground stainless steel shaft, extension or sleeve. All rotating parts mounted and removed as an assembly without disturbing pump housing. 1/2 hp pre-wash motor, 3 hp wash motor and 2 hp rinse motor, all standard TEFC C-face frame, with ball-bearing construction.

**CONTROLS-** Top mounted control cabinet, NEMA 12 rated with heat insulation provided between hood and control cabinet, housing motor controls and overload protection, transformer, contactors and all dishwasher integral controls. All controls safe low voltage 24 VAC.

**SPRAY SYSTEM-** All spray systems are made of 304 stainless steel pipe. Pre-wash, wash and rinse assemblies removable without the use of tools.

**PRE-WASH-** Two vertical spray arms (one on each side of conveyor), each with 5 V-jet nozzles.

**WASH AND RINSE-** Four spray arms threaded into S/S manifold. (2 on each side of conveyor). Each arm designed with 8 high pressure action cleansing slots. The slots are precision milled for water control producing a fan spray.

**FINAL RINSE-** Two vertical spray arms (one on each side of conveyor), each with 6 V-jet nozzles. Arms enclosed in shrouded final rinse chamber to maximize heat transfer to trays.

**DRAIN-** Drain valve externally controlled. Overflow assembly with skimmer cap is removable without the use of tools for drain line inspection. Heater is protected by low water level control.

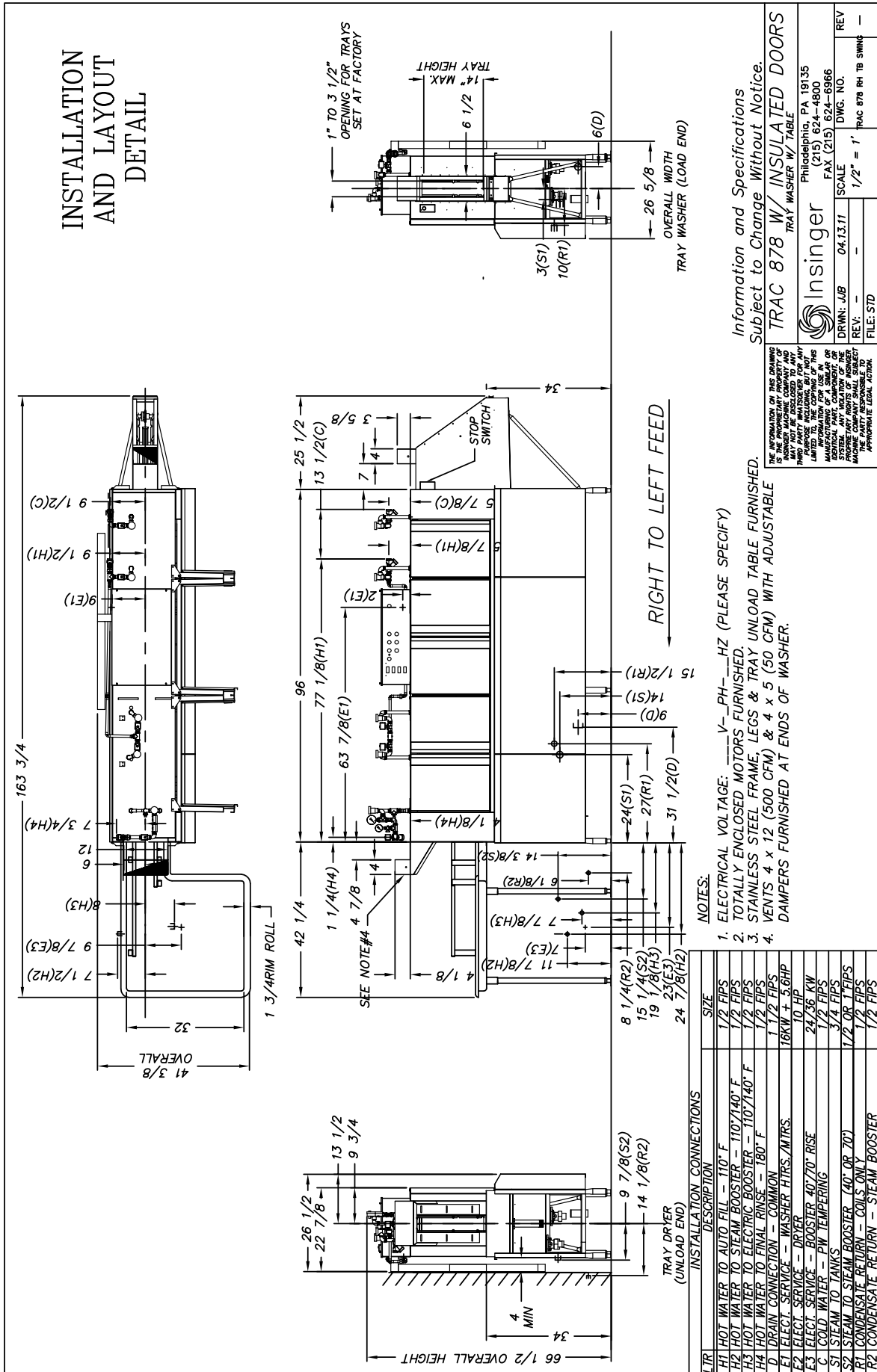
**UNLOAD TABLE-** a stainless steel tray unload table receives clean trays. Table constructed with guide rails which ease the trays onto table.

Note: Due to product improvement we reserve the right to change information and specifications without notice.



# TRAC 878

Automatic Triple Tank Tray Washer



Contact Insinger Sales at 800-344-4802 for an Installation Drawing Specific to Your Application  
 This drawing is available on the Insinger Web site at [www.insingermachine.com](http://www.insingermachine.com)

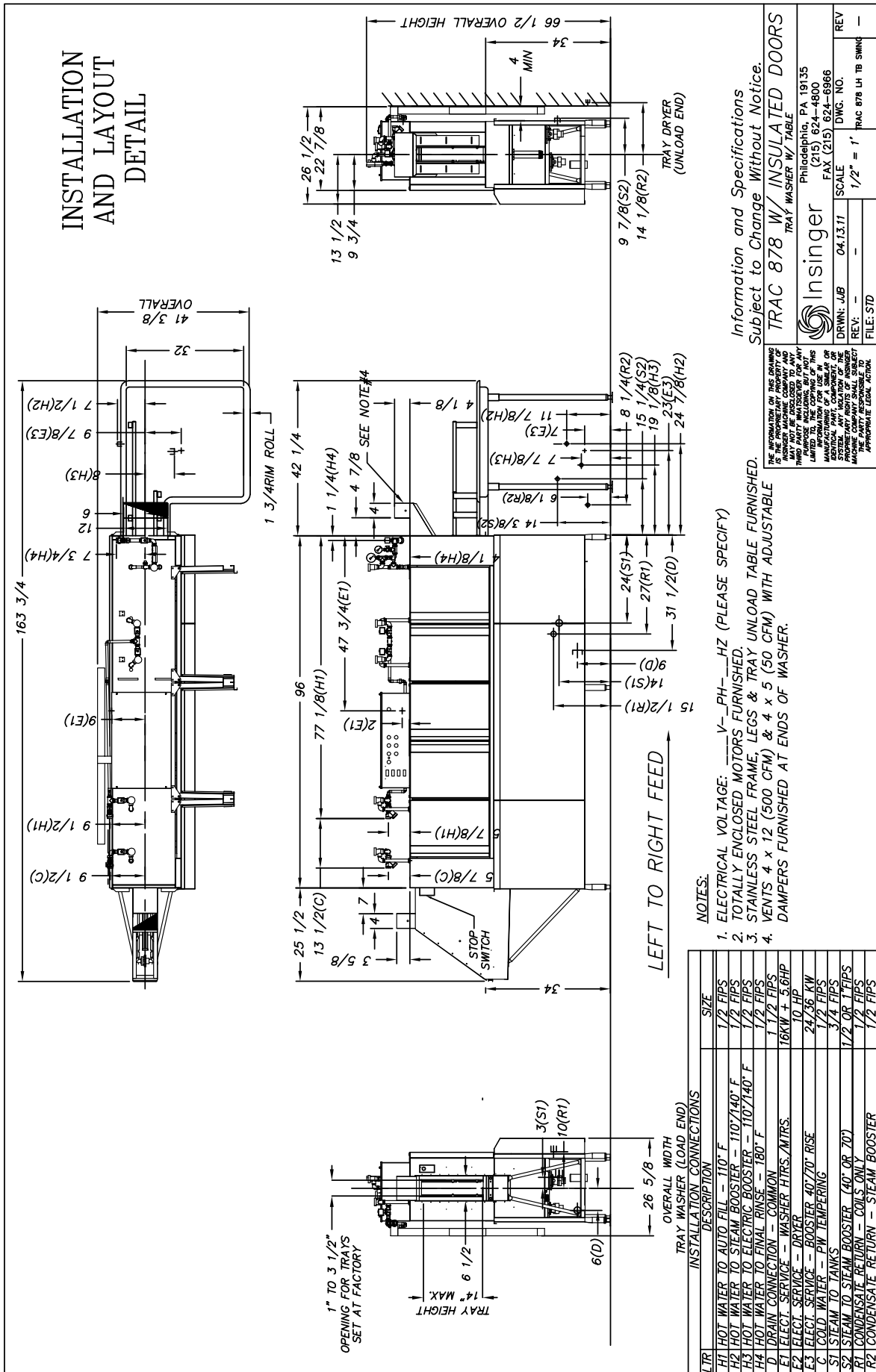
TRAC 878





# TRAC 878

## Automatic Triple Tank Tray Washer



Information and Specifications  
Subject to Change Without Notice.

TRAC 878 W/ INSULATED DOORS  
TRAY WASHER W/ TABLE

		Philadelphia, PA 19135 (215) 624-4800 (215) 624-6966	
DRWN: JUB	SCALE	DWG. NO.	REV
04.13.11	1/2" = 1'	TRAC 878 LH TB SWING	—
REV	FILE: STD		

- NOTES:
- ELECTRICAL VOLTAGE: V—PH—HZ (PLEASE SPECIFY)
  - TOTALLY ENCLOSED MOTORS FURNISHED.
  - STAINLESS STEEL FRAME, LEGS & TRAY UNLOAD TABLE FURNISHED.
  - VENTS 4 x 12 (500 CFM) & 4 x 5 (50 CFM) WITH ADJUSTABLE DAMPERS FURNISHED AT ENDS OF WASHER.

LTR	DESCRIPTION	SIZE
H1	HOT WATER TO AUTO FILL — 110° F	1/2 FIPS
H2	HOT WATER TO STEAM BOOSTER — 110°/140° F	1/2 FIPS
H3	HOT WATER TO ELECTRIC BOOSTER — 110°/140° F	1/2 FIPS
H4	HOT WATER TO FINAL RINSE — 180° F	1/2 FIPS
D	DRAIN CONNECTION — COMMON	1-1/2 FIPS
E1	ELECT. SERVICE — WASHER HTS./MTRS.	16KW + 5.6HP
E2	ELECT. SERVICE — DRYER	10 HP
E3	ELECT. SERVICE — BOOSTER 40/70° RISE	24.56 KW
C	COLD WATER — PW TEMPERING	1/2 FIPS
ST	STEAM TO TANKS	3/4 FIPS
S2	STEAM TO STEAM BOOSTER (40° OR 70°)	1/2 OR 1 FIPS
RT	CONDENSATE RETURN — COILS ONLY	1/2 FIPS
R2	CONDENSATE RETURN — STEAM BOOSTER	1/2 FIPS

Contact Insinger Sales at 800-344-4802 for an Installation Drawing Specific to Your Application  
This drawing is available on the Insinger Web site at [www.insingermachine.com](http://www.insingermachine.com)

### TRAC 878

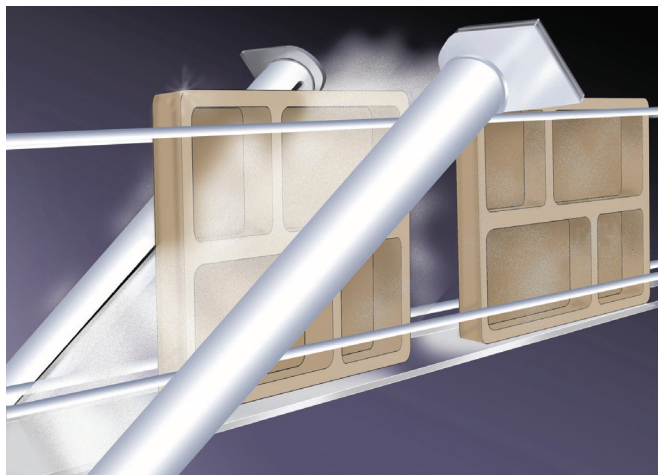




Project \_\_\_\_\_ CSI - 11400 \_\_\_\_\_  
 Item \_\_\_\_\_ Approval \_\_\_\_\_  
 Quantity \_\_\_\_\_ Date \_\_\_\_\_

## TD-321-3 Automatic Tray Dryer (Optional Component)

- Automatic conveyor tray dryer provides 99% dry trays
- Unique Air Wiper design reduces ability for bacteria to grow on wet, stacked trays
- Drier and cleaner workplace—less racking of trays for drying
- Increased productivity
- Capacity is compatible with the tray washer and based on a 15" tray
- Designed for left or right hand conveyor travel, as specified.
- Furnished only as an added component to a TRAC 321-2, TRAC 321-2 RPW or TRAC 878 traywasher



Insinger's unique Air Wiper design leaves trays 99% dry saves labor and provides a cleaner drier workplace.

### STANDARD FEATURES

- Stainless steel frame, legs and feet
- Top mounted NEMA 12 control panel
- SureFire® Start-Up & Check-Out Service

### OPTIONS

- Security package
- Tray Stacker

TD 321-3

#### AUTOQUOTES





# TD-321-3

## Automatic Tray Dryer (Optional Component)

Capacity Per Hour	Compatible with the tray washer and based on a 15" tray	
Motor Size	10 hp (blower) 1/15 hp (conveyor)	
Shipping Weight	700 lbs.	
Additional Current Draw Amps when Connected to Tray Washer	Electric Customer Fuse	
208/3/60	31.0	FRN-R-60
240/3/60	28.2	FRN-R-60
380/3/50	17.0	FRS-R-35
480/3/60	14.1	FRS-R-30

### SPECIFICATIONS

**CONSTRUCTION-** Hood and tank constructed of 16 gauge 18-8 type 304 S/S. Hood unit of all welded seamless construction. S/S frame, legs and feet.

**CONVEYOR-** One stainless steel roller conveyor chain with tray cradles, through both washer and dryer. Width between guide rails is factory adjustable from 1.5: to 3.7". Conveyor accommodates trays up to 15" high. Conveyor drive system includes direct drive gear motor with frictionless, trouble-free overload release system continuously running.

**CONTROLS-** Top-mounted control cabinet, NEMA 12 rated, housing motor controls and overload protection, transformer and contactors. All controls safe low voltage 24 VAC.

**BLOWER-** 10 hp regenerative blower with Insinger's specially designed "air wiper" mounted on either side of conveyor. "Air wipers" are mounted on a diagonal to sweep water in controlled movement preventing splashing and uneven results.

**DRAIN-** All water is drained back into TRAC 321-2, TRAC 321-2 RPW or TRAC 878 with gravity drain connection. Factory installed drain connection to tray washer provided if dryer is ordered with a TRAC 321-2, TRAC 321-2 RPW or TRAC 878.

**UNLOAD TABLE-** A stainless steel tray unload table receives clean trays. Table constructed with guide rails which ease the trays onto table.

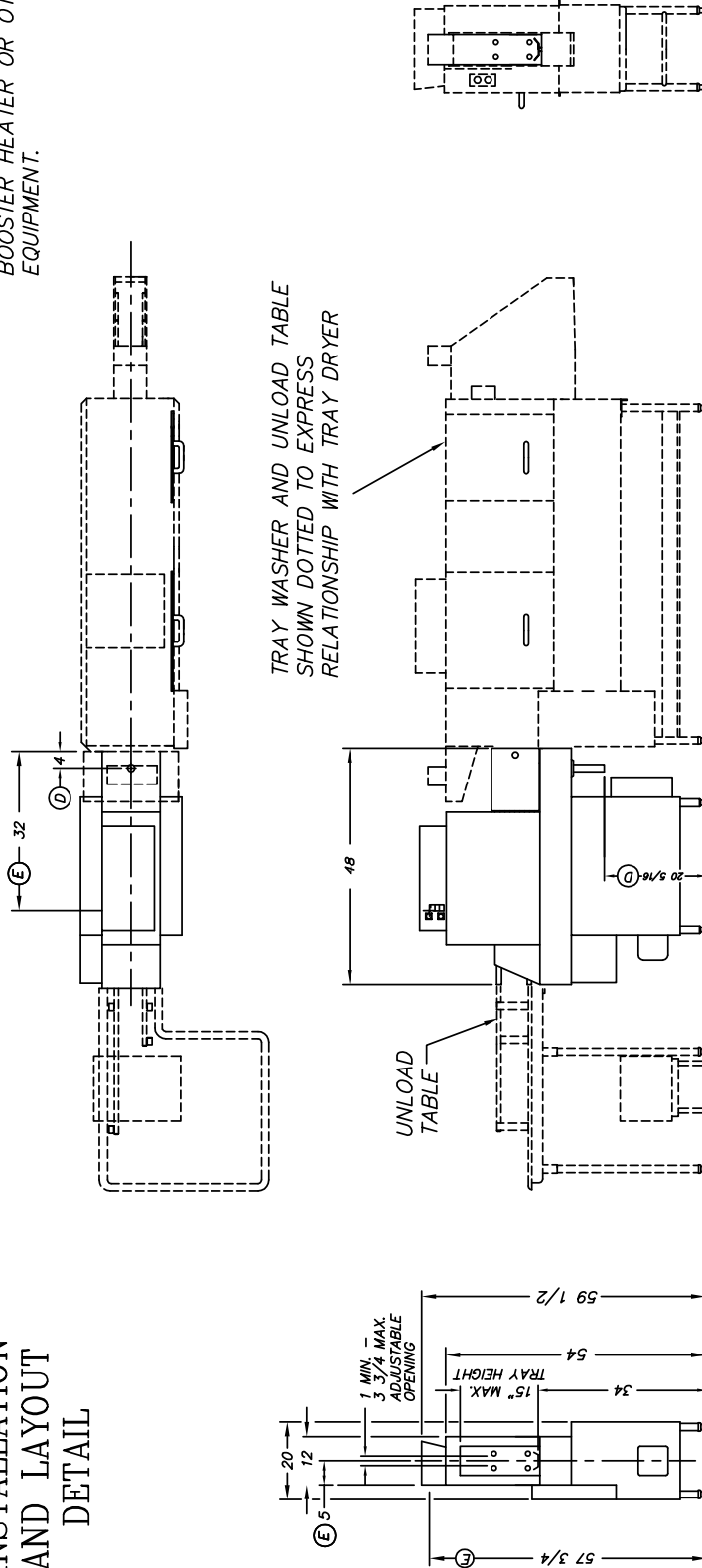
Note: Due to product improvement we reserve the right to change information and specifications without notice.



# TD-321-3 Automatic Tray Dryer (Optional Component)

**NOTE:**  
INSTALLATION ON EXISTING UNITS  
MAY REQUIRE RELOCATION OF  
BOOSTER HEATER OR OTHER  
EQUIPMENT.

## INSTALLATION AND LAYOUT DETAIL



TRAY WASHER AND UNLOAD TABLE  
SHOWN DOTTED TO EXPRESS  
RELATIONSHIP WITH TRAY DRYER

UNLOAD  
TABLE

TRAY DRYER  
UNLOAD END SHOWN

RIGHT TO LEFT FEED

**NOTE:** HOOK UP KIT FOR CONNECTION TO INSINGER  
TRAY WASHER AVAILABLE, DWG. # 1361-105.

Information and Specifications  
Subject to Change Without Notice.

THE INFORMATION ON THIS DRAWING IS THE PROPRIETARY PROPERTY OF INSINGER MACHINERY COMPANY AND THIRD PARTY CONTRACTORS FOR ANY LIMITED TO THE COPYING OF THIS DRAWING FOR THE MANUFACTURE OF A SIMILAR OR IDENTICAL PART, COMPONENT OR EQUIPMENT WITHOUT THE WRITTEN CONSENT OF INSINGER MACHINERY COMPANY. THE PARTY RESPONSIBLE FOR APPROPRIATE LEGAL ACTION.	
<b>TD 321-3 TRAY DRYER</b> SINGLE TANK CONVEYOR TYPE DISHWASHING MACHINE Philadelphia, PA 19135 (215) 624-4800 FAX (215) 624-6966	
Insinger DRWN: EMM 01.17.00 REV: KEW 07.29.08 FILE: STD\TD321-3R	SCALE 1/2" = 1' DWG. NO. TD321-3R REV G

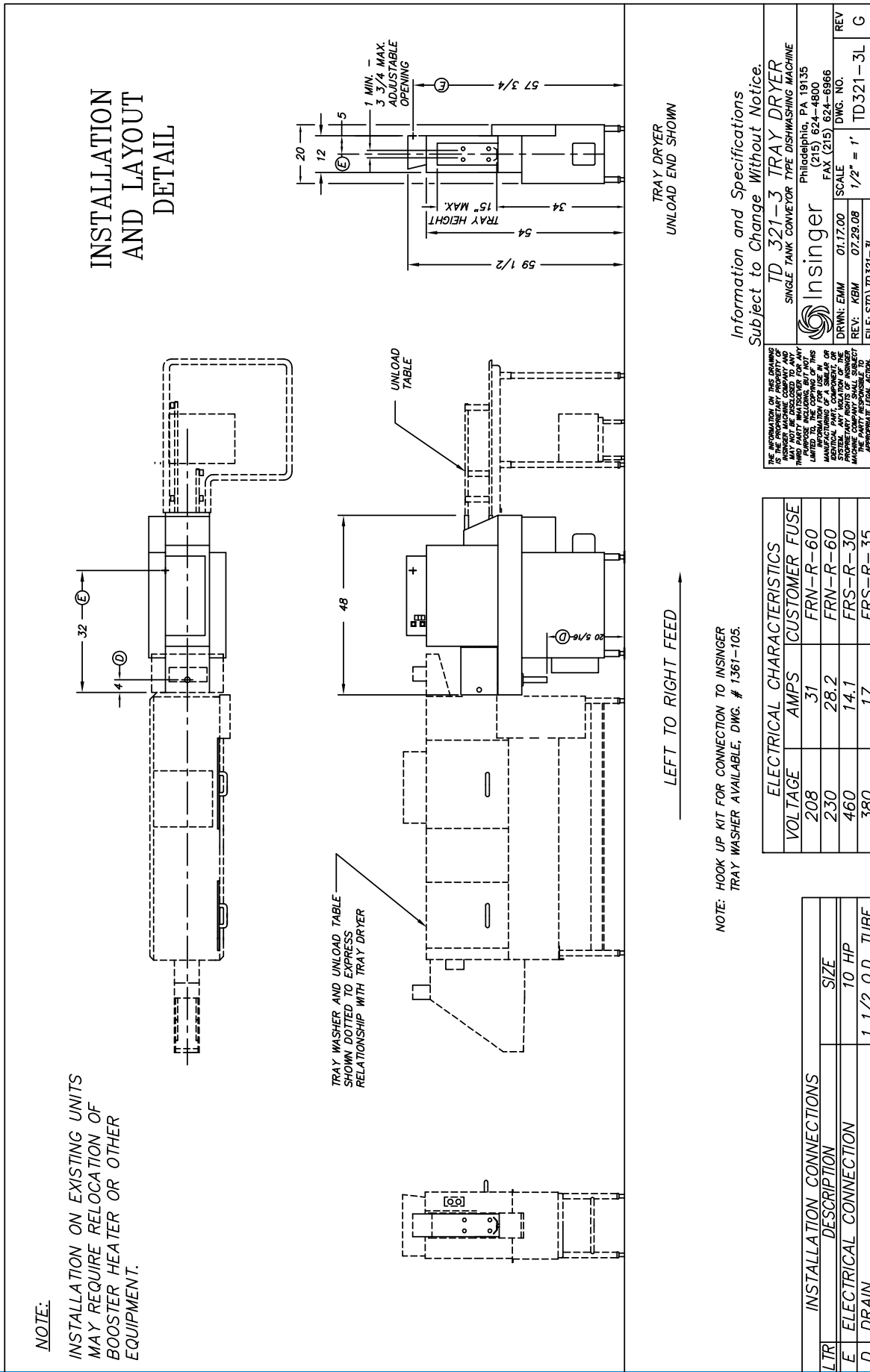
ELECTRICAL CHARACTERISTICS	
VOLTAGE	CUSTOMER FUSE
208	FRN-R-60
230	FRN-R-60
460	FRS-R-30
380	FRS-R-35

INSTALLATION CONNECTIONS	
L/R DESCRIPTION	SIZE
E. ELECT. SERVICE - BLOWER MTR.	10 HP
D. DRAIN	1 1/2 O.D. TUBE

Contact Insinger Sales at 800-344-4802 for an Installation Drawing Specific to Your Application  
This drawing is available on the Insinger Web site at [www.insingermachine.com](http://www.insingermachine.com)



# TD-321-3 Automatic Tray Dryer (Optional Component)



**NOTE:**

INSTALLATION ON EXISTING UNITS MAY REQUIRE RELOCATION OF BOOSTER HEATER OR OTHER EQUIPMENT.

TRAY WASHER AND UNLOAD TABLE SHOWN DOTTED TO EXPRESS RELATIONSHIP WITH TRAY DRYER

LEFT TO RIGHT FEED

TRAY DRYER UNLOAD END SHOWN

NOTE: HOOK UP KIT FOR CONNECTION TO INSINGER TRAY WASHER AVAILABLE, DWG. # 1361-105.

Information and Specifications Subject to Change Without Notice.

TD 321-3 TRAY DRYER SINGLE TANK CONVEYOR TYPE DISHWASHING MACHINE Philadelphia, PA 19135 (215) 624-4800 FAX (215) 624-6966	
DRWN: EAM	SCALE
REV: KEM	07:29:08
FILE: STD\TD321-3L	1/2" = 1'
REV	TD321-3L
	G

ELECTRICAL CHARACTERISTICS	
VOLTAGE	CUSTOMER FUSE
208	FRN-R-60
230	FRN-R-60
460	FRS-R-30
380	FRS-R-35

INSTALLATION CONNECTIONS	
LTR DESCRIPTION	SIZE
E ELECTRICAL CONNECTION	10 HP
D DRAIN	1 1/2 O.D. TUBE

Contact Insinger Sales at 800-344-4802 for an Installation Drawing Specific to Your Application  
 This drawing is available on the Insinger Web site at [www.insingermachine.com](http://www.insingermachine.com)

**TD 321-3**



**STAINLESS STEEL**  
**U-SHAPED SOIL DISHTABLE** 

**NEW** *Tile Edge Design*

Item #: \_\_\_\_\_ Qty #: \_\_\_\_\_  
 Model #: \_\_\_\_\_  
 Project #: \_\_\_\_\_



SHOWN WITH OPTIONAL FAUCET



**10-1/2" EXTRA LARGE  
 Bold Looking Backsplash  
 with 2" return and tile edge**

**FEATURES:**

- Tile edge for ease of installation.
- Includes 8" deep Prerinse Sink Basket and Bar Slide and Dishlanding.
- Additional length on any leg of dishtables, use **DTA-56**.
- Additional custom lengths available on all sides.
- Dishlanding may be replaced with backsplash or rolled edge at no additional charge.
- Dishtable lengths exceeding 90" requires a welded field joint (welded by others). Use **K-57**.

**CONSTRUCTION:**


- All TIG welded.
- 14 Gauge Stainless Steel.
- Stainless Steel Legs and Cross Bracing.
- Stainless Steel Bullet Feet.
- Gussets welded to Stainless Steel Channels.
- Welded areas blended to match adjacent surfaces and to a satin finish.

**MECHANICAL:**

- Faucet holes in splash punched 8" on center. Faucet not included.
- Includes 1-1/2" I.P.S. Basket Type Waste Drain.

Model #	Inches	mm	Cu	Wt.
DTS-U30-72LorR	71"	1828	108	450 lbs.
DTS-U30-84LorR	83"	2134	125	470 lbs.
DTS-U30-96LorR*	95"	2438	143	490 lbs.
DTS-U30-108LorR*	107"	2743	160	525 lbs.
DTS-U30-120LorR*	119"	3048	177	550 lbs.
DTS-U30-132LorR*	131"	3353	194	575 lbs.
DTS-U30-144LorR*	143"	3658	211	600 lbs.

\*Includes Field Joint to be welded in field by others.



**Customer Service Available To Assist You 1-800-645-3166 8:30 am - 7:00 pm E.S.T.**

For Orders & Customer Service:  
 Email: customer@advancetabco.com or Fax: 631-242-6900

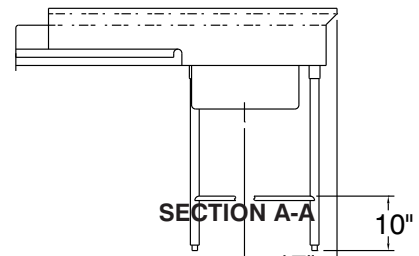
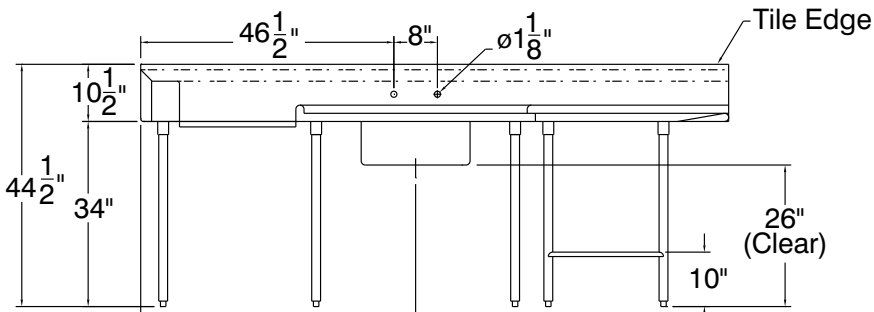
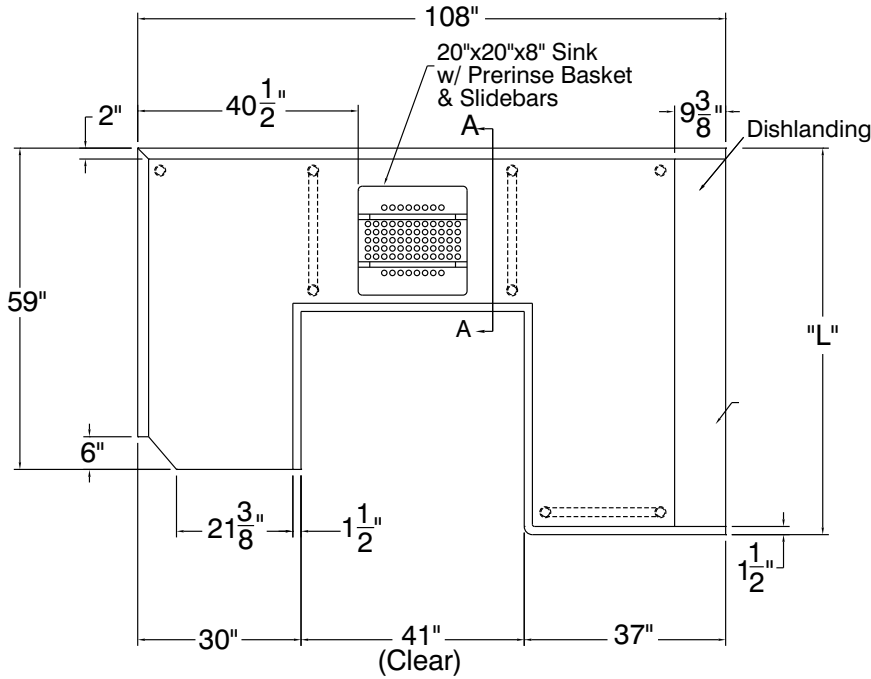
For Smart Fabrication™ Quotes:  
 Email: smartfab@advancetabco.com or Fax: 631-586-2933

# DIMENSIONS and SPECIFICATIONS

ALL DIMENSIONS ARE TYPICAL

TOL ± .500"

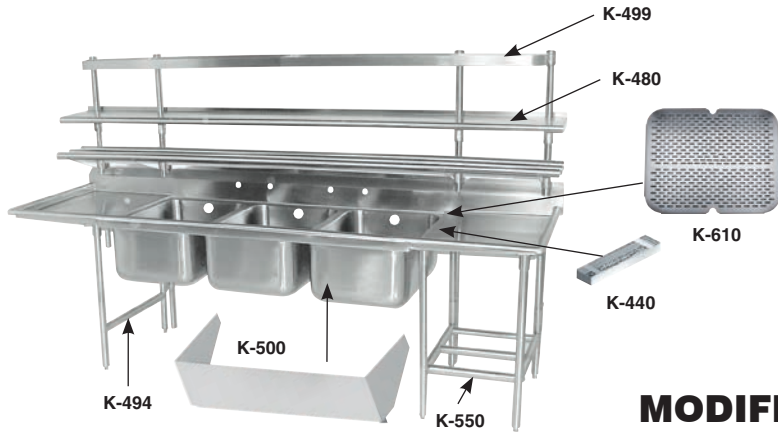
**SEE DISH MACHINE COMPATIBILITY CHART TO ENSURE PROPER FIT**  
 Dish Machine Compatibility Chart can be found on our website at [www.advancetabco.com](http://www.advancetabco.com) under "Product Support"



ADVANCE TABCO is constantly engaged in a program of improving our products. Therefore, we reserve the right to change specifications without prior notice.



# SINK MODIFICATIONS & ACCESSORIES



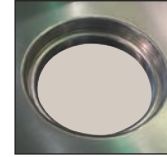
**K-37**  
Anti-Siphon  
Vacuum  
Breaker Holes



**K-72**  
Leg-To-Wall  
Brace



**K-460A**  
Disposal  
Cone w/  
Control  
Bracket &  
Faucet Holes



**K-461A**  
Install Collar  
w/ Control Bracket

## MODIFICATIONS

<b>K-4</b>	Support Bracket for Lever Waste Drain Handle
<b>K-23</b>	Sink Legs Welded To Undershelf Or Left-To-Right Cross Rails, Shipped Set Up & Crated. (Top Is Not Welded To Legs)
<b>K-23A</b>	Sink Legs Welded To Leg Gussets Under Sink Top & To Undershelf Or Left-To-Right Cross Rails, Shipped Set Up & Crated
<b>K-24</b>	Shell Crating
<b>K-37</b>	Anti-Siphon Vacuum Breaker Holes
<b>K-57</b>	Welded field Joint (Welded in field by others)
<b>K-76</b>	Paint on Sound Deadening
<b>K-77</b>	Splash Cutout (Pipe Chase)
<b>K-106</b>	Mirror Highlite Edge for Sink
<b>K-440</b>	Waste Trough with 2" deep removable basket
<b>K-447</b>	High Backsplash up to 18"
<b>K-448</b>	High Backsplash up to 13"
<b>K-450</b>	Extra Drainboard
<b>K-451</b>	Drainboard Corner Turn
<b>K-452</b>	Control Bracket 8" x 12"
<b>K-452S</b>	Splash Mounted Control Bracket 8" x 12"
<b>K-453</b>	Control Bracket 14" x 16"
<b>K-453S</b>	Splash Mounted Control Bracket 14" x 16"
<b>K-454</b>	Sidesplash
<b>K-456</b>	Scrap Block Installed
<b>K-460</b>	Installation of Disposal Cone with 8" x 12" Control Bracket, Faucet Holes (Cone supplied by others)
<b>K-460A</b>	Installation of Disposal Cone with 14" x 16" Control Bracket, Faucet Holes (Cone supplied by others)

<b>K-461</b>	Install Collar with 8" x 12" control bracket (Collar by others)
<b>K-461A</b>	Install Collar with 14" x 16" control bracket (Collar by others)
<b>K-470</b>	Modify Bowl Depth
<b>K-472</b>	Faucet Hole Revision
<b>K-473</b>	Working Height Revision
<b>K-476</b>	Punch for Over Flow Holes (Holes Only. N/C when ordering K-15)
<b>K-479</b>	Undershelf Under Drainboard
<b>K-480</b>	Stainless Steel 12" Wide Shelf (min. of 3 ft.)
<b>K-480A</b>	Stainless Steel 15" Wide Shelf (min. of 3 ft.)
<b>K-490</b>	Provision for Pot Washer (For "Wells-PW-106" only)
<b>K-491</b>	Provision for Hatco Heater
<b>K-495</b>	Turn Down Backsplash (Includes 2 Brackets. See K-397 Add'l Sets)
<b>K-498</b>	Tubular Overshelf 12" wide (Min. 3 Ft.)
<b>K-499</b>	Stainless Steel Pot Rack
<b>K-500</b>	Stainless Steel Apron to Cover Sink Bowls
<b>K-500A</b>	17" Stainless Steel Apron to Cover Sink Bowls and Support Lever Drain Handles
<b>K-508</b>	Special Sizing Charge (Larger size cut down to smaller size)
<b>K-508A</b>	Special Modification Charge
<b>K-510</b>	Prepare Sink for Undercounter Dishwasher (24" drainboard or larger)
<b>K-520</b>	Poly Board/Stainless Steel Cover Holder
<b>K-550</b>	Stainless Steel Tubular Rack Storage
<b>K-ROD</b>	Weld Support Rods For Poly Sink Cover In Corners Of Sink Bowl

## ACCESSORIES

<b>K-30</b>	Faucet Wall Mounting Bracket
<b>K-72</b>	Leg To Wall Brace
<b>K-350</b>	Residential Finish & Packaging
<b>K-397</b>	Wall Brackets for Sink (Brackets Included with K-495)
<b>K-457</b>	Replacement Rubber Scrap Block (See K-456 for install cost)
<b>K-474</b>	16 ga., '304' Series S/S Leg with S/S Foot
<b>K-475</b>	S/S Legs with S/S Foot
<b>K-477</b>	Replacement Leg Clamp For Adjustable Cross-Bracing
<b>K-477C</b>	Replacement Corner Leg Clamp For Adjustable Cross-Bracing
<b>K-478</b>	Stainless Steel Bullet Foot
<b>K-488</b>	Flanged S/S Bullet Foot
<b>K-493</b>	16 ga., '304' Series S/S Welded Leg Assembly with S/S Feet
<b>K-494</b>	S/S Welded Leg Assembly with S/S Feet
<b>K-497</b>	Galv. Welded Leg Assembly with Plastic Feet
<b>K-497A</b>	Galv. Individual Legs with Plastic Feet
<b>K-496</b>	Leg Assembly For Grease Interceptor w/ Adj. Cross-Bracing & S/S Feet (For Grease Interceptors with 15" Ht. or less. Consult factory for larger Grease Interceptors)
<b>K-610</b>	Perforated Stainless Steel Sink Grid (Specify Bowl Size)

## SINK COVERS

Choose Model # & Add The Proper Letter In Place Of The Underscore (.).  
Example: K-2A or FC-455H

Bowl Size	FOR DEEP DRAWN BOWLS		FOR FABRICATED BOWLS	
	Poly Covers Model K-2_	S/S Covers Model K-455_	Poly Covers Model K-2_	S/S Covers Model FC-455_
10" x 14"	A	A	AF	A
12" x 20"	I	I	IF	I
14" x 14"	H	H	HF	H
14" x 16"	B	B	BF	B
15" x 15"	Not Available	Not Available	MF	M
15" x 24"	Not Available	Not Available	UF	U
16" x 20"	C	C	CF	C
18" x 18"	Not Available	Not Available	JF	J
18" x 24"	D	D	DF	D
20" x 20"	E	E	EF	E
20" x 24"	Not Available	Not Available	PF	P
20" x 28"	G	G	GF	G
20" x 30"	Not Available	Not Available	SF	S
24" x 30"	Not Available	Not Available	TF	T
24" x 24"	F	F	FF	F
24" x 36"	Not Available	Not Available	RF	R
30" x 30"	Not Available	Not Available	VF	V

Custom Covers Available. Consult Factory.



**Customer Service Available To Assist You 1-800-645-3166 8:30 am - 7:00 pm E.S.T.**

For Orders & Customer Service:  
Email: customer@advancetabco.com or Fax: 631-242-6900

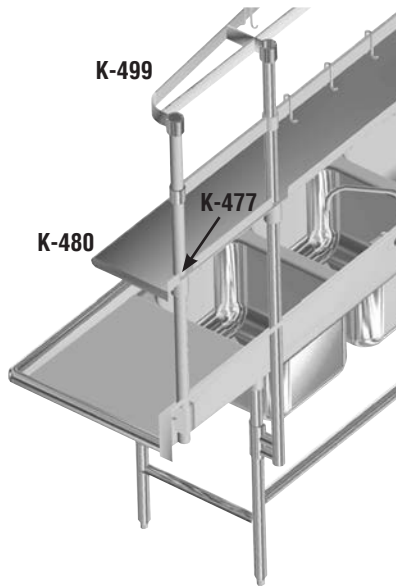
For Smart Fabrication™ Quotes:  
Email: smartfab@advancetabco.com or Fax: 631-586-2933



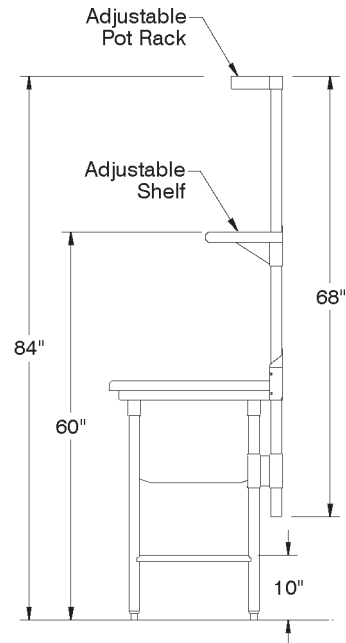


# POT RACK & TUBULAR OVERSHELF DETAILS AND SPECIFICATIONS

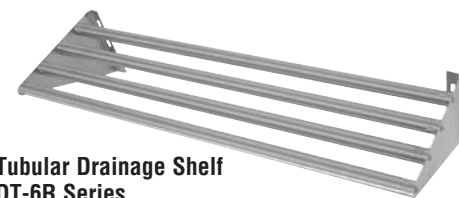
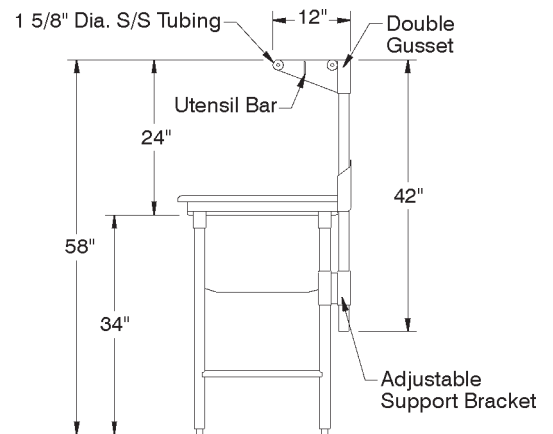
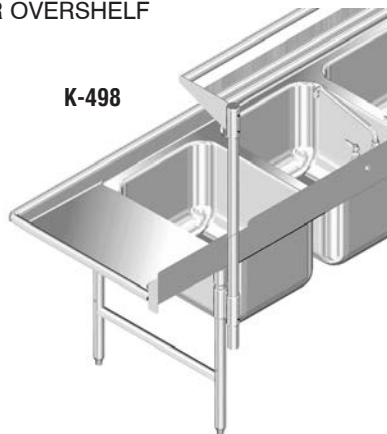
## ADJUSTABLE POT RACK & SHELF



Item #: \_\_\_\_\_ Qty #: \_\_\_\_\_  
 Model #: \_\_\_\_\_  
 Project #: \_\_\_\_\_



## TUBULAR OVERSHELF



Model #	Description	Qty
K-477	Mounting Provision for Sink Mounted Pot Rack or Shelf	
K-480	12" Wide Stainless Steel Shelf	
K-498	Tubular Overshelf (min. 3 ft.)	
K-499	Stainless Steel Pot Rack	
DT-6R-36	3' Tubular Wall Mounted Drainage Shelf	
DT-6R-48	4' Tubular Wall Mounted Drainage Shelf	
DT-6R-60	5' Tubular Wall Mounted Drainage Shelf	
DT-6R-72	6' Tubular Wall Mounted Drainage Shelf	



**Customer Service Available To Assist You 1-800-645-3166 8:30 am - 7:00 pm E.S.T.**

Email Orders To: [customer@advancetabco.com](mailto:customer@advancetabco.com). For Smart Fabrication™ Quotes, Email To: [smartfab@advancetabco.com](mailto:smartfab@advancetabco.com) or Fax To: 631-586-2933

**NEW YORK**  
 Fax: (631) 242-6900

**GEORGIA**  
 Fax: (770) 775-5625

**TEXAS**  
 Fax: (972) 932-4795

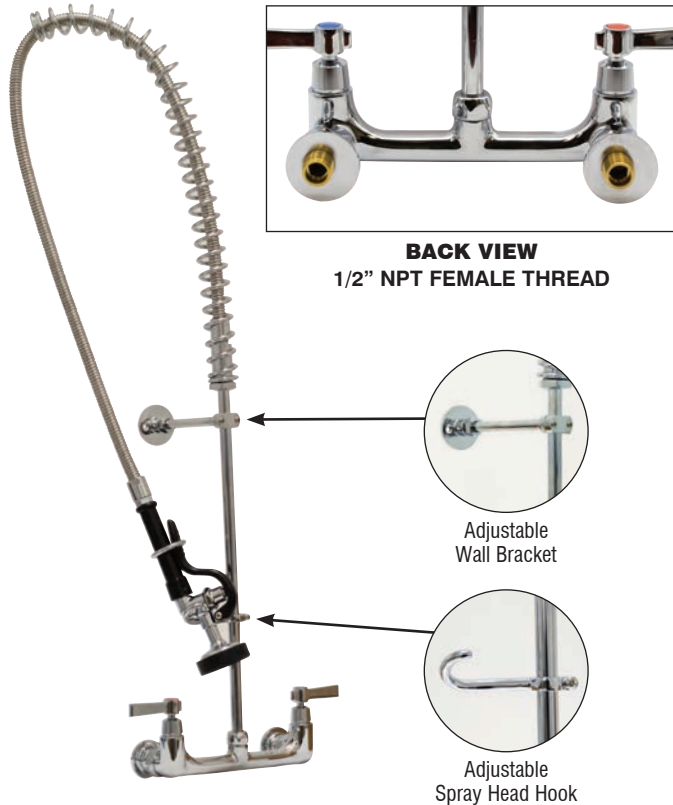
**NEVADA**  
 Fax: (775) 972-1578



# DTA-53 SPLASH MOUNT PRERINSE FAUCET

Conforms To NSF 61/9 Lead Free Requirements

Item #: \_\_\_\_\_ Qty #: \_\_\_\_\_  
 Model #: \_\_\_\_\_  
 Project #: \_\_\_\_\_



**FEATURES:**

- 8" O.C. water supply.
- Quarter-turn wedge style handles.
- Colored hot & cold indexes.
- Spray head with continuous water flow ring.
- Heavy duty hose spring.
- Wall mount bracket.
- Adjustable spray head hook.
- Flow Rate: 1.6 GPM @ 60 PSI

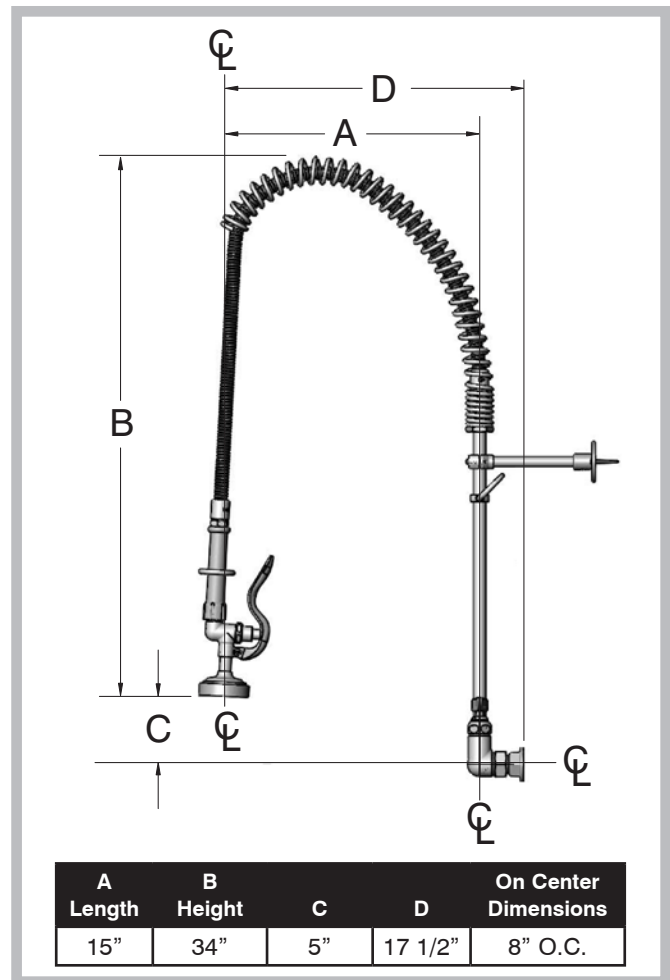
**MATERIAL:**

- Brass chrome plated body.
- Chrome plated handles.



**Click This Link To View Assembly Sheet**

## DIMENSIONS and SPECIFICATIONS



### Options & Accessories

**Replacement Hose**

Handle Not Included.

**K-113**



**Replacement Spray Head and Handle**

1.15 GPM

**K-114**



**12" Add-A-Faucet For DTA-53 Prerinse Faucet**

**K-117**



**WARNING:**

Faucet(s) on this page may expose you to chemicals, including lead, that are known to the State of California to cause cancer or birth defects or other reproductive harm. For more Info., visit [www.p65warnings.ca.gov](http://www.p65warnings.ca.gov).



**Customer Service Available To Assist You 1-800-645-3166 8:30 am - 7:00 pm E.S.T.**

For Orders & Customer Service:

Email: [customer@advancetabco.com](mailto:customer@advancetabco.com) or Fax: 631-242-6900

For Smart Fabrication™ Quotes:

Email: [smartfab@advancetabco.com](mailto:smartfab@advancetabco.com) or Fax: 631-586-2933



# P-TRAPS & CONTINUOUS WASTES

## 3 Compartment Continuous Waste



K-351

## Chrome Plated P-Trap

### STANDARD

22 Gauge - 1-1/2" IPS

7-PS-14

### HEAVY DUTY

17 Gauge - 1-1/2" IPS

7-PS-10



## Offset Tail Piece



K-46



**Customer Service Available To Assist You 1-800-645-3166 8:30 am - 8:00 pm E.S.T.**

Email Orders To: [customer@advancetabco.com](mailto:customer@advancetabco.com). For Smart Fabrication™ Quotes, Email To: [smartfab@advancetabco.com](mailto:smartfab@advancetabco.com) or Fax To: 631-586-2933

**NEW YORK**

Fax: (631) 242-6900

**GEORGIA**

Fax: (770) 775-5625

**TEXAS**

Fax: (972) 932-4795

**NEVADA**

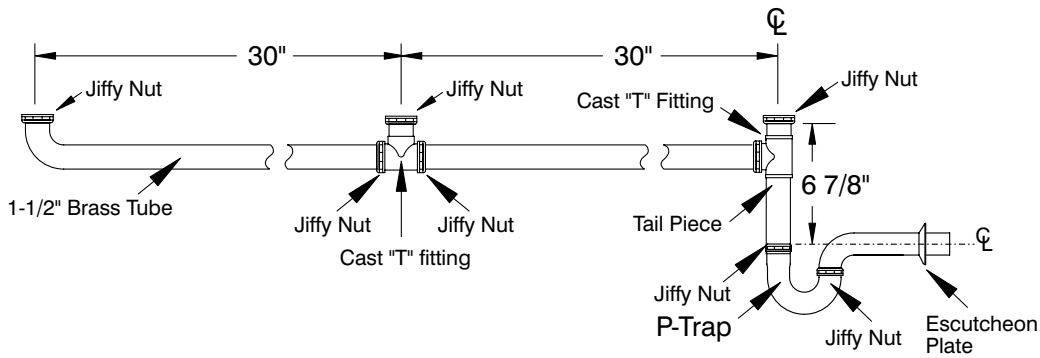
Fax: (775) 972-1578

# DIMENSIONS and SPECIFICATIONS

TOL ± .125"

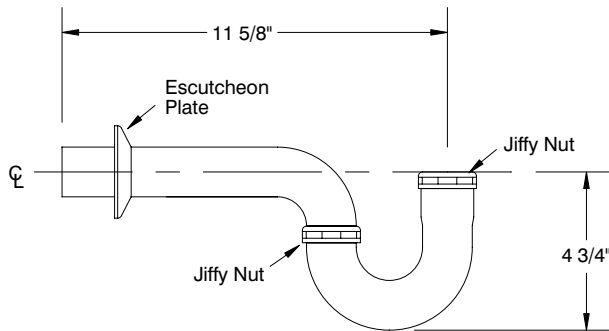
ALL DIMENSIONS ARE TYPICAL

## 3 Compartment Continuous Waste



K-351

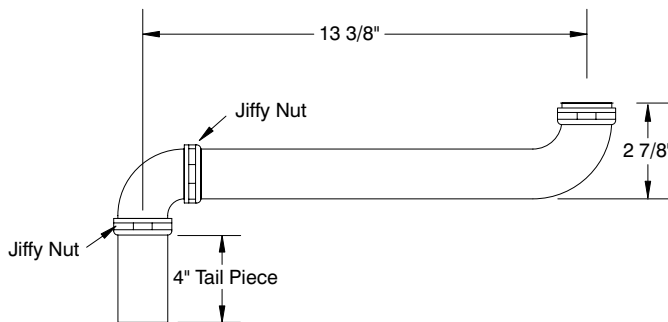
## Chrome Plated P-Trap



**STANDARD**  
22 Gauge - 1-1/2" IPS  
7-PS-14

**HEAVY DUTY**  
17 Gauge - 1-1/2" IPS  
7-PS-10

## Offset Tail Piece



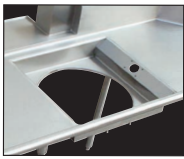
K-46



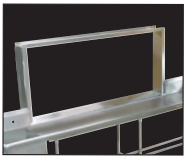
ADVANCE TABCO is constantly engaged in a program of improving our products. Therefore, we reserve the right to change specifications without prior notice.

# DISHTABLE MODS

## Dishtable Modifications & Accessories



DTA-95



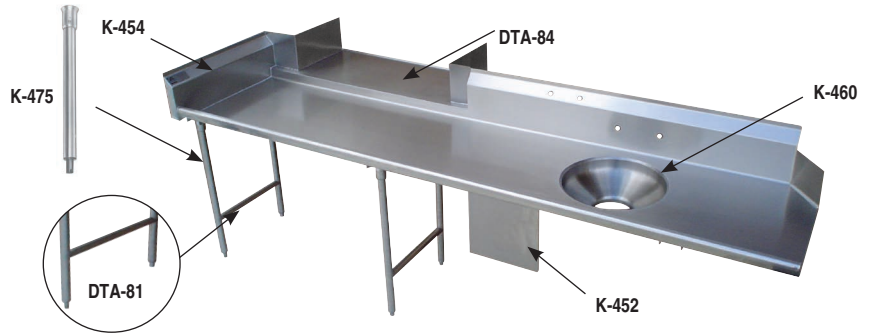
DTA-87



DTA-82



DTA-45



### MODIFICATIONS

K-23	Welded Set-Up/Cratered
K-24	Shell Crating
K-37	Anti-Siphon Vacuum Breaker Hole
K-57	Welded Field Joint (Welded In Field By Others)
K-76	Paint On Sound Deadening
K-77	Splash Cut-Out (Pipe Chase)
K-440	Waste Trough Installation Welded Into Table And Furnished With A 2" Deep Removable Basket
K-452	Control Bracket 8" x 12"
K-453	Control Bracket 14" x 16"
K-454	Side Splash
K-456	Scrap Block Installed (Includes Rubber Scrap Block)
K-460	Disposal Cone Welded Into Table And Furnished With 8" x 12" Control Bracket & Faucet Holes (Supplied By Others)
K-460A	Installation Of Disposal Cone With 14" x 16" Control Bracket, Faucet Holes (Cone Supplied By Others)
K-461	Disposal Collar Welded Into Sink Bowl And Furnished With 8" x 12" Control Bracket (Supplied By Others)
K-461A	Disposal Collar Welded Into Sink Bowl And Furnished With 14" x 16" Control Bracket (Supplied By Others)
K-472	Special Faucet Hole Location
K-495	Turn Down Backsplash (Incl. 2 Brackets. See K-397 For Add'l Sets)
K-508A	Special Modification Charge
K-550	Stainless Steel Tubular Rack Storage
DTA-40	Drain Hole (For Sorting Table)

DTA-45	Scrap Trough Welded To Dump Sink - Min. Scrap Trough Length Is 3'. Max. Length Is 8'. For 20" x 20" x 8" Bowl Spec-Line Soil S30 Series Only. - Consult Factory For Trough Lengths Exceeding 8 Feet
DTA-46	Inside Mitered Corner
DTA-66	Provision For Dishlanding On Straight Soil Table (Min 4')
DTA-70	Install Booster Heater Brackets (Brackets By Others)
DTA-72	Provision For Side Loader
DTA-75	Provision For Limit Switch (Limit Switch By Others)
DTA-76	Move Prerinse Sink To Conform To Dishmachine Requirements. Please Specify Machine When Placing Order
DTA-78	Notch In Backsplash Return To Clear Handle Please Specify Machine When Placing Order
DTA-81	S/S Welded Leg Assembly with S/S Feet
DTA-82	15" x 20" x 8" Undercounter Dump Sink
DTA-84	Simple Pass-Thru (Specify Wall Thickness - Min. Length 36")
DTA-87	Pass-Thru Wall Frame (Specify Wall Thickness - Min. Length 36")
DTA-95	Install Scrapper Top
DTA-96	Install Trough Collector
DTA-99A	16" x 20" x 12" Sink Bowls
DTA-99B	20" x 20" x 12" Sink Bowls
DTA-99C	10" x 14" x 5" Dump Sink
DTA-99D	18" x 24" x 14" Sink
DTA-99E	24" x 24" x 14" Sink
DTA-106	Mirror Highlight To Dishtable Upgrade

### ACCESSORIES

K-4	Lever Drain Bracket
K-5	Twist Handle Operated Drain
K-15	Twist Handle Operated Drain With Overflow
K-397	Wall Brackets (2 Each. Brackets Included With K-495)
K-455C	Stainless Steel Sink Cover 16" x 20"
K-455E	Stainless Steel Sink Cover 20" x 20"
K-457	Replacement Rubber Scrap Block (See K-456 For Install Cost)
K-475	Replacement S/S Leg With Stainless Steel Bullet Foot
K-478	Replacement Stainless Steel Bullet Foot
K-488	Flanged S/S Bullet Foot
K-550	Stainless Steel Tubular Rack Storage
K-610	Perforated Stainless Steel Sink Grid (Specify Bowl Size)
K-700D	12" High Removable Side Splash For Dishtables (Specify Model)
DTA-53	SPEC-LINE Heavy Duty Prerinse Faucet
DTA-51	Pre-Rinse Slide Bar for 18" x 24" Fab. Sink Bowls

DTA-52	Pre-Rinse Slide Bar for 24" x 24" Fab. Sink Bowls
DTA-55	Column Notch (Includes Splash)
DTA-56	Add'l Length On 59" Side Of Corner Or Straight Tables
DTA-58	Pre-Rinse Basket w/ Slide Bar for 18" x 24" Fab. Sink Bowls
DTA-59	Pre-Rinse Basket w/ Slide Bar for 24" x 24" Fab. Sink Bowls
DTA-60	Prerinse Slide Bar for 20" x 20" Fab. Sink Bowls
DTA-62	Prerinse Basket For 20" x 20" Deep Drawn Bowls
DTA-63	Prerinse Slide Bar For 20" x 20" Deep Drawn Bowls
DTA-64	Prerinse Slide Bar For 16" x 20" Fab. Sink Bowls
DTA-65	Prerinse Slide Bar For 16" x 20" Deep Drawn Bowls
DTA-67	Stainless Steel Rear Cross-Bracing (Factory Installed Only)
DTA-69	Prerinse Basket For 16" x 20" Deep Drawn Bowls
DTA-100	Prerinse Basket with Slide Bar for 20" x 20" Fab. Sink Bowls
DTA-125	Prerinse Basket with Slide Bar for 16" x 20" Fab. Sink Bowls
DTA-125A	Perforated Basket for DTA-82 Dump Sink





## ADDITIONAL DISHTABLE ACCESSORIES

For More Faucet Options & Faucet Specs,  
See Faucet Specifications

**WARNING:**

Faucet(s) on this page may expose you to chemicals, including lead, that are known to the State of California to cause cancer or birth defects or other reproductive harm. For more info, visit [www.p65warnings.ca.gov](http://www.p65warnings.ca.gov).

### Prerinse Baskets with Welded Slide Bar For Fabricated Bowls

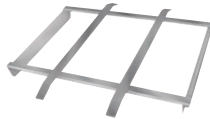
Model #	Fits Bowls	Wt.	Cu.
DTA-125	16" x 20" x 4"	9 lbs.	1
DTA-100	20" x 20" x 4"	12 lbs.	1
<b>Large Size Baskets</b>			
DTA-58	18" x 24" x 4"	11 lbs.	1
DTA-59	24" x 24" x 4"	20 lbs.	1



DTA-100 Shown

### Prerinse Slide Bars For Fabricated Bowls

Model #	Fits Bowls	Wt.	Cu.
DTA-64	16" x 20"	7 lbs.	1
DTA-60	20" x 20"	9 lbs.	1
<b>Large Size Prerinse Slide Bars</b>			
DTA-51	18" x 24"	8 lbs.	1
DTA-52	24" x 24"	10 lbs.	1



### Prerinse Baskets with Welded Slide Bar For Deep Drawn Bowls

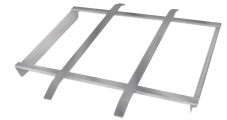
Model #	Fits Bowls	Wt.	Cu.
DTA-69	16" x 20" x 4"	9 lbs.	1
DTA-62	20" x 20" x 4"	12 lbs.	1



DTA-62 Shown

### Prerinse Slide Bars for Deep Drawn Bowls

Model #	Fits Bowls	Wt.	Cu.
DTA-65	16" x 20"	7 lbs.	1
DTA-63	20" x 20"	9 lbs.	1



### Splash Mounted Faucet EXTRA HEAVY DUTY

**K-119**  
8" O.C.



16" Spout

### Splash Mounted Faucet

**K-101**  
8" O.C.



8" Spout

### SPEC-LINE EXTRA HEAVY DUTY

#### Prerinse Faucet

**DTA-53**  
8" O.C.

Wall Bracket Included

Splash Mounted

Interchangeable with T&S Brand Faucets  
T&S Equivalent = B133-B



#### Prerinse Faucet



**K-116**  
8" O.C.

Wall Bracket Included

Splash Mtd.



**Add-A-Faucet for DTA-53 Prerinse Faucet K-117**



**Add-A-Faucet for K-116 Prerinse Faucet K-117-TS**



### Stainless Steel Sink Compartment Covers

**K-455**  
16" x 20" Cover  
or  
20" x 20"  
Specify Size



### Lever Operated Drain

**K-5**



Twist Handle 2" IPS

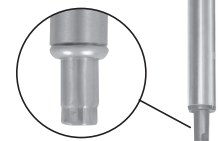
### Lever Drain Support Bracket

**K-4**



### INDIVIDUAL Stainless Steel Legs with Stainless Steel Adjustable Bullet Feet

**K-475**



Customer Service Available To Assist You **1-800-645-3166** 8:30 am - 8:00 pm E.S.T.

Email Orders To: [customer@advancetabco.com](mailto:customer@advancetabco.com). For Smart Fabrication™ Quotes, Email To: [smartfab@advancetabco.com](mailto:smartfab@advancetabco.com) or Fax To: 631-586-2933

**NEW YORK**  
Fax: (631) 242-6900

**GEORGIA**  
Fax: (770) 775-5625

**TEXAS**  
Fax: (972) 932-4795

**NEVADA**  
Fax: (775) 972-1578