

WORK AUTHORIZATION

WORK AUTHORIZATION NO. 16 PROJECT: 501P Wilco Building Fire Line Liberty Hill Bypass Project

This Work Authorization is made pursuant to the terms and conditions of the Williamson County Contract for Engineering Services, being dated July 16, 2019 and entered into by and between Williamson County, Texas, a political subdivision of the State of Texas, (the "County") and Cobb, Fendley & Associates, Inc. (the "Engineer").

Part 1. The Engineer will provide the following Engineering Services set forth in Attachment "B" of this Work Authorization.

Part 2. The maximum amount payable for services under this Work Authorization without modification is \$106,077.52.

Part 3. Payment to the Engineer for the services established under this Work Authorization shall be made in accordance with the Contract.

Part 4. This Work Authorization shall become effective on October 1, 2024 and shall terminate on July 15, 2025. The Engineering Services set forth in Attachment "B" of this Work Authorization shall be fully completed on or before said date unless extended by a Supplemental Work Authorization.

Part 5. This Work Authorization does not waive the parties' responsibilities and obligations provided under the Contract.

Part 6. County believes it has sufficient funds currently available and authorized for expenditure to finance the costs of this Work Authorization. Engineer understands and agrees that County's payment of amounts under this Work Authorization is contingent on the County receiving appropriations or other expenditure authority sufficient to allow the County, in the exercise of reasonable administrative discretion, to continue to make payments under this Contract. It is further understood and agreed by Engineer that County shall have the right to terminate this Contract at the end of any County fiscal year if the governing body of County does not appropriate sufficient funds as determined by County's budget for the fiscal year in question. County may effect such termination by giving written notice of termination to Engineer.

Part 7. This Work Authorization is hereby accepted and acknowledged below.

Continued next page

EXECUTED this _____.

ENGINEER:

Cc

By

Sandra G. Khoury

Sandra G. Khoury, P.E.

Printed Name

November 8, 2024

Title

COUNTY:

Williamson County, Texas

By: _____

Signature

Printed Name

Title

LIST OF ATTACHMENTS

Attachment A - Services to be Provided by County

Attachment B - Services to be Provided by Engineer

Attachment C - Work Schedule

Attachment D - Fee Schedule

APPROVED

By Christen Eschberger at 8:36 am, Nov 13, 2024

ATTACHMENT A

SERVICES TO BE PROVIDED BY COUNTY

Williamson County and/or its Designated Representative(s) will provide project direction, review and oversight of utility coordination, engineering and design services for all Road Bond Projects and will provide all project related design files, topographic survey and right-of-way data to assist with coordination efforts.

Williamson County and/or its Designated Representative(s) will negotiate and secure Interlocal Agreements (ILA), when applicable, and provide copies to Utility Coordinator upon execution.

Williamson County and/or its Designated Representative(s) will provide written comments on the plan submittals within five (5) business days from receipt.

ATTACHMENT B

SERVICES TO BE PROVIDED BY ENGINEER

Scope of Services provided by Cobb, Fendley & Associates, Inc. (the *Utility Coordinator*), involves utility coordination, engineering and design services in Williamson County, Texas, (the County) as described below:

This scope includes the following major tasks:

501P Wilco Building Fire Line - Liberty Hill Bypass Project

1. UTILITY DESIGN.

The *Engineer* will coordinate and develop PS&E for utilities to be included in the construction contract for the County upon written request by the Utility Owner and/or the County. All joint bid utility plan requests are to be approved by the County or Designated Representative prior to commencing work.

The *Engineer* will provide design, bid, and construction phase services for the installation of approximately 1,200 linear feet of 6” water pipe, 200 linear feet of 16” steel encasement installed via open trench and jack/bore, required appurtenances, and connections to the existing 24” water line associated with the construction of Liberty Hill Bypass in Williamson County. This scope assumes that the water plans will be included as a Change Order to the roadway and drainage plans and constructed by the roadway and drainage Contractor. Below is a detailed scope of services.

1.1. Design Phase

During the Design Phase, The *Engineer* will prepare plans and compile specifications for the construction of the proposed water utility. Below is a detailed scope of services. If utilities in addition to the ones labeled on the attached conflict exhibit are identified, an additional services proposal will be prepared to perform the necessary utility design work. This proposal assumes that The *Engineer* will prepare erosion controls for the proposed fire line. The design phase assumes a 75% design workshop meeting, followed by a 100% submittal to City of Liberty Hill.

A. Data Development.

1. Gather and analyze data. Obtain plans and electronic files for roadway and topographical information. This scope assumes that survey information for relocations located within the ROW will be provided by the roadway engineer and that it will include data adequate to design the relocations within the ROW. This scope assumes that no additional survey will be necessary.

B. Plans.

The **Engineer** will prepare design plans at 75% and 100% completion. 75% plans will be discussed at a design workshop meeting with the City of Liberty Hill. 100% plans will be officially submitted to City of Liberty Hill for review. We anticipate the following sheets to be included in our design set.

1. Cover sheet. (1 Sheet)
2. General Notes. Assemble a set of general notes using City of Round Rock and TCEQ standards. (2 Sheets)
3. Quantity Sheet (1 Sheets). Prepare a summary of quantities sheet. Full quantities will be included in the 75% plans and 100% submittal.
4. Overall Water Keymap (1 Sheet). Prepare an overall water reference sheet to scale.
5. Erosion and Sedimentation Control Sheets (2 sheets). Prepare 11"x17" erosion and sedimentation control plan sheets for work outside of roadway project limits at 75% plans and 100% submittal. Assumes 2 sheets.
6. Water Plan and Profile Sheets (3 Sheets). Prepare plan and profile sheets at 75% plans and 100% submittal for the proposed water line at a scale of 1" = 40' on 11"x17" plan sheets, with a true half size. Assumes 3 sheets. This scope assumes fire hydrant plan and profile sheets will not be required.
7. Water Detail Sheets (2 sheets). Prepare detail sheets showing standard construction details and special, project-specific details. Assumes 2 sheets.
8. Other Detail Sheets (2 sheets). Assumes 2 sheets.
9. Restrained Joint Lengths (1 Sheet). Perform restrained joint calculations and include a table of required lengths calculated in the plans at the 100% submittal. Assumes 1 sheet.

Note: This scope assumes that environmental clearance required for new easements, if applicable, will be handled by others. This scope assumes that additional survey needed for relocations outside of the right-of-way will be coordinated with and performed by others. This scope assumes that easement investigation and acquisition will be handled by others.

C. Specifications.

The **Engineer** will assemble standard technical specifications to be included as a Change Order to the roadway and drainage contract documents. A list of specifications relevant to the project will be provided with the 75% plan to the City of Liberty Hill. A full set of utility specifications required will be provided with the 100% submittals for the proposed water line. City of Round Rock and City of Austin standard technical specifications will be used for this project. This scope assumes that front end/contract documents will be prepared by others.

D. Quantity Take-Off.

The **Engineer** will perform a quantity take off and prepare a bid form. A quantity take-off will be performed at the 75% plans and 100% submittal. Bid items to be included in the bid form will be prepared by the roadway and drainage consultant.

- E. Cost Estimate.
The **Engineer** will prepare an opinion of probable construction cost for the 75% plans and 100% submittal.
- F. QA/QC.
The **Engineer** will perform internal quality control reviews on the plans, specifications, and construction cost estimates prior to each submittal to City of Liberty Hill.
- G. 75% Design Workshop Meeting.
The **Engineer** will prepare 75% designs and plans to present to the City of Liberty Hill in a design workshop meeting. Discussions from this meeting will be incorporated into the subsequent 100% submittal.
- H. Submittal packages (1).
The **Engineer** will assemble plans and specifications and submit to City of Liberty Hill for review. This scope assumes there will be a 100% Final Bid Set submittal. The **Engineer** will electronically provide 11"x17" size plans and specifications, as noted above, for each submittal.
- I. Respond to comments.
The **Engineer** will review comments provided by the City of Liberty Hill and prepare a written response to the comments for inclusion with the subsequent submittal.
- J. Review meetings (1).
This includes one (1) submittal to City of Liberty Hill for their review and approval. If the correspondence, meetings, and revisions required by the City exceeds the number of meetings listed in this scope of services, then additional services will be required.
- K. Approvals.
Coordinate with City of Liberty Hill to obtain required approvals for construction. This scope assumes that permits will be obtained by others.
- L. Project Management/Coordination.
This proposal assumes a four (4) month design schedule. This task assumes there may be regular coordination meetings with others, regular correspondence regarding design and overall schedule, and other miscellaneous coordination efforts.

1.2. Bid Phase

This proposal assumes that bidding for the overall project has concluded, and the water line design to which this proposal pertains is as part of a change order to the overall project.

The following items are not included in bid phase services:

- A. Attend pre-bid conference. Meeting agenda and minutes prepared by others.
- B. Respond to contractor's questions during bidding process.
- C. Prepare addenda to address contractor questions.
- D. Review bid tabs.
- E. Review contractor recommendation.

1.3. Construction Phase

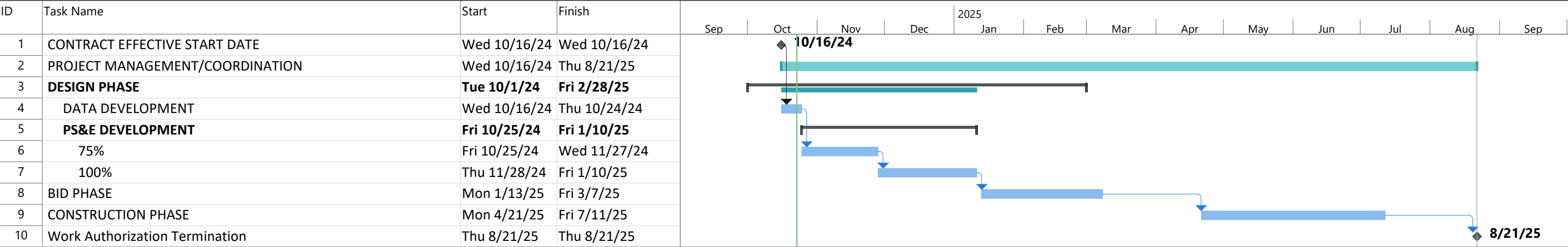
The **Engineer** will provide limited construction administration and observation assistance to the project and City of Liberty Hill. This scope does not include inspection services. This scope assumes construction duration of four (4) months. All scopes of services in this scope are related to water and wastewater utility relocations only. Below is a detailed scope of services for construction phase:

- A. Attend preconstruction meeting.
- B. Attend four (4) meetings when utility adjustments are in process.
- C. Attend periodic site visits. Assume two (2) site visits (not coincident with progress meetings). If additional visits are required, then this will result in additional services.
- D. Review project submittals/shop drawings. The **Engineer** will review each submittal up to two (2) times. If the Contractor requires a third submittal, it will be reviewed as an additional service and at the Contractor's expense, as will be written in the contract documents. This scope assumes 15 submittals.
- E. Respond to Requests for Information (RFI). The **Engineer** will coordinate with City of Liberty Hill and the Contractor on RFIs and respond with clarifications as needed. This scope assumes two (2) RFIs.
- F. Change Orders. The **Engineer** will assist in negotiation and preparation of change order documents, should they be necessary. This scope assumes one (1) change order.
- G. Project Close Out. The **Engineer** will assist with closing out the contract, reviewing final pay application and affidavits, and preparing a Concurrence Letter.
- H. Record Drawings. The **Engineer** will prepare a set of record drawings based on Contractor's redlines in the field. Record drawings will be provided to the City electronically.
- I. Project Management. This proposal assumes a four (4) month construction schedule for water items. This task assumes there may be regular coordination

meetings with others, regular correspondence regarding construction schedule, and other miscellaneous coordination efforts.

The following items are not included in construction phase services:

- A. Review of pay estimates.
- B. This Construction Phase Services assumes that one project inspector amongst the stakeholders will be assigned and there will not be coordination amongst the various stakeholders during construction.
- C. Final Walk Through and Punch List.



Williamson County
501.P_Liberty Hill Bypass Firelin
WA 16

Task	<div></div>	Project Summary	<div></div>	Manual Task	<div></div>	Start-only	<div></div>	Deadline	<div></div>
Split	<div></div>	Inactive Task	<div></div>	Duration-only	<div></div>	Finish-only	<div></div>	Progress	<div></div>
Milestone	<div></div>	Inactive Milestone	<div></div>	Manual Summary Rollup	<div></div>	External Tasks	<div></div>	Manual Progress	<div></div>
Summary	<div></div>	Inactive Summary	<div></div>	Manual Summary	<div></div>	External Milestone	<div></div>		

Description of Work Task	Senior Project Manager	Senior Engineer	Project Engineer III	Project Engineer II	Project Engineer I	Senior Utility Specialist	Utility Specialist	Senior Technician	Technician III	Administrative	Total Hours	Total Cost
	\$291.00	\$241.00	\$210.00	\$185.00	\$155.00	\$192.00	\$155.00	\$179.00	\$155.00	\$130.00		
Design Phase												\$ 63,710.00
Data Development												
Gather and analyze data.			4		8			12			24	\$ 4,228.00
Plans											0	\$ -
Cover (1 sheet)			2		2						4	\$ 730.00
General Notes (2 sheets)					2						2	\$ 310.00
Summary of Quantities (1 sheets)			6		8						14	\$ 2,500.00
Overall Water Keymap (1 sheet)		1			4						5	\$ 861.00
Erosion and Sedimentation Controls (2 sheets)	1	2	8		16						27	\$ 4,933.00
Water Plan and Profile (3 sheets)	2		24		48			48			122	\$ 21,654.00
Water Detail Sheets (2 sheets)			1		3						4	\$ 675.00
Other Detail Sheets (2 sheets)			1		2						3	\$ 520.00
Restrained Joint Lengths (1 Sheet)			4		10						14	\$ 2,390.00
Specifications			8		8						16	\$ 2,920.00
Quantity Take-Off/Bid Form			8		8						16	\$ 2,920.00
Cost Estimate			4		8						12	\$ 2,080.00
QA/QC		2									2	\$ 482.00
Design Workshop Meeting	2	14	2		2						20	\$ 4,686.00
Submittal Packages (2)			6		4						10	\$ 1,880.00
Respond to Comments (1)	1		3		3						7	\$ 1,386.00
Review Meetings (1)	1		3		3						7	\$ 1,386.00
Approvals			3		3						6	\$ 1,095.00
Project Management/Coordination	4		16				10				30	\$ 6,074.00
Construction Phase	9											\$ 42,062.00
Attend preconstruction meeting			0		0						0	\$ -
Attend progress meetings (4)			8		24						32	\$ 5,400.00
Attend site visits (2)			8		24						32	\$ 5,400.00
Review submittals (15)			15		30		8				53	\$ 9,040.00
Respond to RFIs (2)		2	4		12			6			24	\$ 4,256.00
Change orders (1)	2	3	6		12		2	8			33	\$ 6,167.00
Project close-out			6		12						18	\$ 3,120.00
Record drawings	5		5		10			8			28	\$ 5,487.00
Project Management/Coordination	2		8				6				16	\$ 3,192.00
Total Hours	20	24	163	0	266	0	26	82	0	0	581	
Cost	\$5,820	\$5,784	\$34,230	\$0	\$41,230	\$0	\$4,030	\$14,678	\$0	\$0		\$ 105,772.00

Other Direct Expenses			CobbFendley	
Description	Unit Cost	Units	Quantity	Total
Mileage (billed at IRS approved rate - estimated cost shown)	\$ 0.670	mile	456	\$305.52
				\$305.52

Work Authorization Total

\$ 106,077.52