



General Information

Introducing:

Chasco Constructors, Ltd., L.L.P.
2801 E. Old Settlers Blvd.
Round Rock, Texas 78665
(512) 244-0600
bids@chasco.com

Type of Firm:

Construction Managers and General Contractors for
Commercial/Industrial/Institutional Buildings &
Highway-Heavy Construction

Work We Perform With Our Own Forces:

Design Development
Planning
Estimating
Construction Management
Project Management
Scheduling

Site Preparation
Site Utilities
Site Concrete Work
Structural Concrete
Concrete Specialties
Procurement and Expediting

Number of Years in Business:

45 years

Date of Incorporation:

August 1, 1979

State of Incorporation:

Texas

Number of Employees:

Over 325

Professional Affiliations:

Associated General Contractors (AGC)
American Society for Concrete Construction (ASCC)
American Concrete Institute (ACI)

General Partner:

Chasco Contracting, GP, LLC

President:

Chuck Glace

Vice-President & CFO:

Charles King

Vice Presidents:

Tony Glace, Bill Bambrick

Controller:

Cathy Miles

Brushy Creek Regional Trails Phase 3

Owner: Williamson County, TX
Jim Rodgers (512) 260-4263

Architect/Engineer: Halff Associates
Brian Binkowski (512) 777-4600

Initial Contract Price: \$2,799,000.05
Final Contract Price: \$1,860,988.05

Description of Project: This was a 2.6-mile section of 10' wide concrete trail on the Brushy Creek Regional Trail System. The trail project from Parmer Lane to the Cedar Park YMCA consisted of clearing, grading, culverts, 10' wide concrete trail, fencing, handrail and a wood boardwalk. There were also five 30' to 90' long engineered steel bridges with abutments and drilled piers that crossed Brushy Creek and its tributaries. Access was limited, so getting the bridges and crane to each site was a challenge that required extensive planning. The site amenities on this project consisted of site/trail signage, benches, exercise equipment and an information kiosk. Chasco constructed most of the trail with in-house forces.



An unusual feature of this project was several large granite blocks that were located within the limits of construction along the trail. These blocks had fallen off rail cars when they were being transported to Austin for the construction of the State Capital. Chasco had to move the large blocks out of the way and decided to place a couple along the trail as amenities. The owner and landscape architect liked the placement and ended up requesting that several more be added along the length of the trail.

Management Tools: Thorough plan review, scheduling, submittal logs, weekly project team meetings, two week look aheads, experienced personnel and management.

Process: We evaluate each piece of the project through scheduling and sequencing to maximize safety and duration.

William Cannon Drive Ph 2

Owner: Carma Easton LLC
Contact: AJ Zorn (512) 831-770

Architect/Engineer: Peloton Land Solutions
Contact: Paulo Misi (512) 831-7700

Initial Contract Price: \$5,784,840.00
Final Contract Price: \$6,441,746.64



Description of Project: 1.2 miles of E. William Cannon Dr. This project included the west bound side of the roadway with its terminus at the existing intersection of US 183 & FM 1625. The project included the base and paving, multi-barrel box culverts, MSE walls, waterline install, type 'C' embankment, curb, sidewalk and all other roadway construction.



Management Tools: Thorough plan review, scheduling, submittal logs, weekly project team meetings, two week look aheads, experienced personnel and management.

Process: We evaluate each piece of the project through scheduling and sequencing to maximize safety and duration.

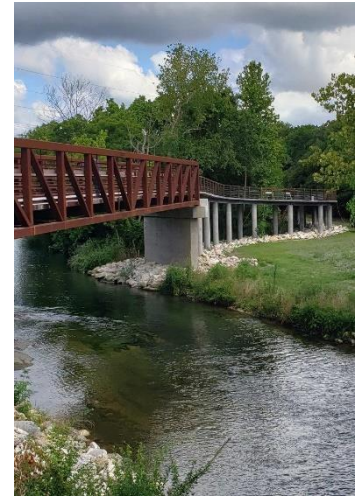
Brushy Creek Regional Trails Phase 5

Owner: Williamson County, TX
Blake Skiles (512) 943-1555

Architect/Engineer: Pape Dawson
James Lutz (512) 454-8711

Initial Contract Price: \$2,339,929.45
Final Contract Price: \$2,373,396.01

Description of Project: This project is the 5th phase of the trail system that parallels Brushy Creek. The scope consisted of constructing approximately 3,600 LF of new concrete trail on two sides of Brushy Creek, just west of Round Rock. The work included installation of three precast concrete boardwalk systems with pedestrian handrail that utilized CIP columns and piers, and precast caps, beams, and decks. A 120 ft prefabricated steel truss bridge was installed to span the creek and connect two of the boardwalk systems. Setting the bridge underneath LCRA electrical transmission lines presented a difficult challenge.



Management Tools: Thorough plan review, scheduling, submittal logs, weekly project team meetings, two week look aheads, experienced personnel and management.

Process: We evaluate each piece of the project through scheduling and sequencing to maximize safety and duration.

William Cannon Drive Ph 3

Owner: Brookfield Residential
AJ Zorn (512) 391-1330

Architect/Engineer: KT Civil
Peggy Carrasquillo (512) 758-7474

Initial Contract Price: 10,264,424.00
Final Contract Price: \$11,320,134.00

Description of Project: This project was in a highly visible location and will extend the westbound lanes of William Cannon all the way to Hwy 183. it includes 1.7 miles of new roadway construction, with approx. 220 LF of new bridge installation. Roadway construction consisted of grading, lime treated subgrade, 14" flex base, HMAC paving, approximately 5,700 SF of new sidewalk, 17,200 LF of curb & gutter, traffic signal installation, 2,200 LF of storm sewer with curb and area inlets and 2 rain garden bio filtration ponds.

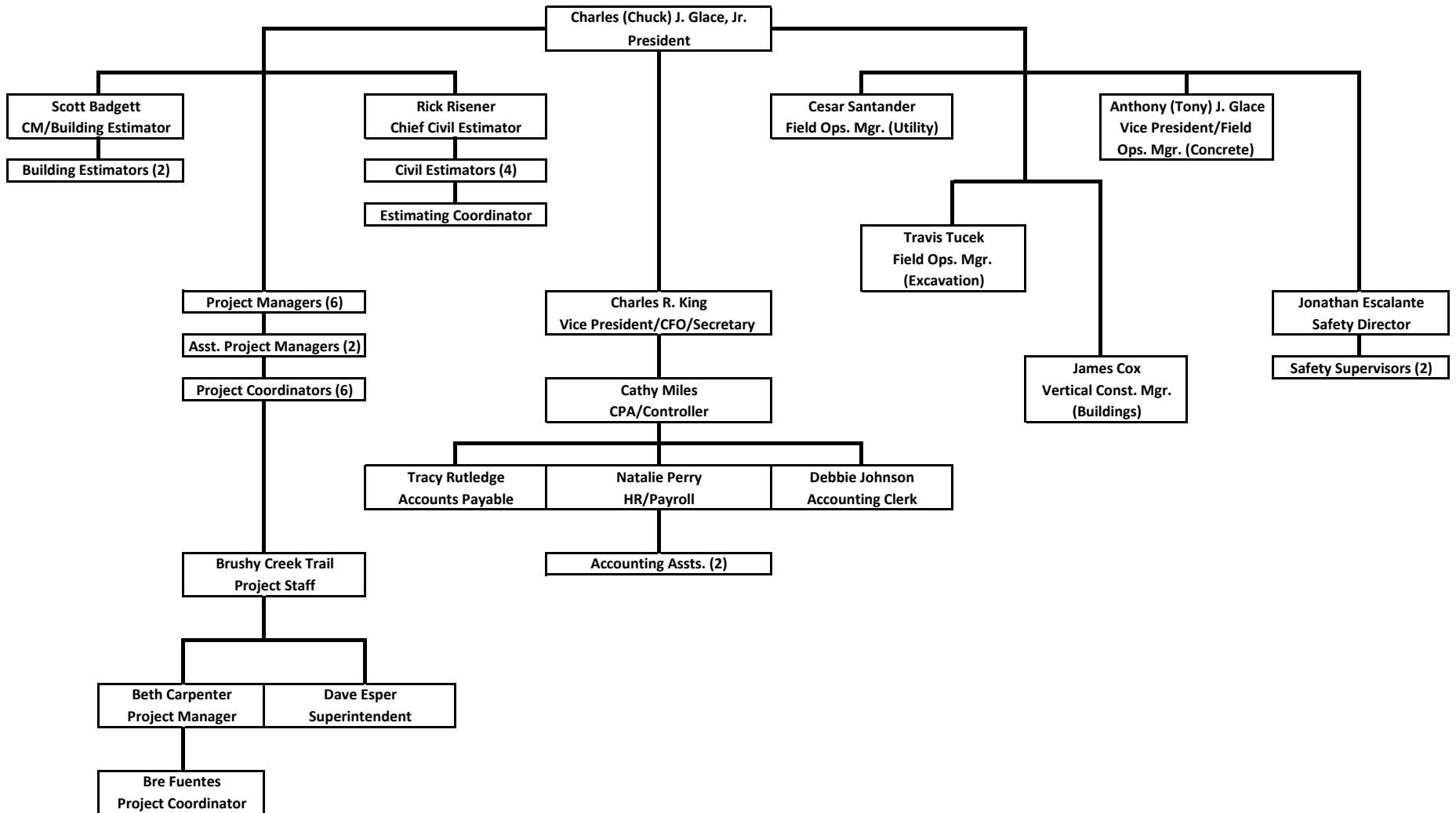


Management Tools: Thorough plan review, scheduling, submittal logs, weekly project team meetings, two week look aheads, experienced personnel and management.

Process: We evaluate each piece of the project through scheduling and sequencing to maximize safety and duration.



CHASCO CONSTRUCTORS, LTD., LLP.
ORGANIZATIONAL CHART





Beth Carpenter
Project Manager

Work History and Background

Beth has over 11 years of Project Management experience with the past 6 years at Chasco.

Project Experience

- Kalahari Resort & Conventions is a 350-acre resort that includes retail, indoor water park, a hotel and convention center, and multiple restaurants. It is located adjacent to SH 79 on the east side of Round Rock. Chasco scope includes the installation of the site utilities, drainage, curb and gutter, light pole foundations and all other site concrete including decorative paving for the project.
- Samsung ISO – Phase II is a new expansion for the Critical Chemical Storage consisting of 700 CY and 58 tons of reinforced structural concrete, 125 tons of structural steel along with a mechanical bridge spanning over existing active drive lanes connecting to existing facilities. The project also includes 11,000 SF of concrete masonry unit with 3hr rated walls, drywall and metal stud framing, exterior metal wall & roof panels, special coatings, site utilities to include 800 LF of fiber optic and data relocation and 6,000 SF of reinforced concrete paving.
- Bluebonnet Drive Reconstruction – Reconstruct .25 miles of existing 17" paving section for Chandler Creek Subdivision. Remove and Replace existing pavement with 8" lime stabilized subgrade, geogrid, 11" flex base and 6" HMAC paving. Scope includes remove and replace 1,280 SY sidewalk, 2,100 LF of curb and concrete valley gutters.
- RDO Equipment Parts and Service Additions Scope includes 14,000 SF of slab on grade, 50,000 SF of concrete paving, 60 LF of curb and 740 SF of sidewalk. Slab on grade for this project includes placing angle edges and trench drains.
- Lakeside at Tessera HOA Boat Ramp – Construction of a private boat ramp on Lake Travis. Scope includes MSE Block retaining walls, concrete paving, grooved 7in thick boat ramp paving with articulated concrete block erosion protection and boat trailer parking.
- Celebration Church is a new 90,000 SF church recently constructed in Georgetown, TX. The facility has a childcare wing of 60,000 SF. The remaining 30,000 SF of the building includes the narthex (entry/ vestibule) and sanctuary. The narthex includes a bookstore and the "Blend", a "bistro style" coffee service area. The sanctuary accommodates seating for over 2,600 guests and incorporates a state-of-the-art audio/visual system. The project had a 13-month schedule, but was completed in 12 months, in spite of having over 40 rain days.
- Lexus of Lakeway, Austin, TX - The Lexus of Lakeway project was an extremely high-end full-service car dealership. The \$21 million project consisted of a three-level main building of 86,000 SF, an 11,000 SF carwash/make ready building and all the associated site work. It represents the first and only new car dealership facility constructed in the City of Lakeway.

References

Barbara Garrett, Owner
Garrett Consulting Services
615-394-4977

Jim Freeman, President
Highroad Construction Services
512-844-6402



Dave Esper
Project Superintendent

R E S U M É

Additional Training & Certifications:

OSHA 30hr

2009 HAZ-COM

Excavation

First Aid & CPR

Work History and Background

Dave has over 30 years of construction experience with Chasco Constructors. As a field foreman and Superintendent, Dave has extensive experience in earthwork, utilities, and civil concrete. He has constructed bridges and box culverts, major sedimentation, and filtration ponds, cast in place concrete walls over 30 feet in height as well as concrete tilt walls for commercial buildings.

Project Experience

- **Superintendent on Kenney Fort Blvd Segment 4B** - This project is a 6,520 LF four lane roadway with turn lanes and island medians for the City of Round Rock, Texas. The overall duration of the project was nine months and consisted of roadway demolition, 40,000 CY of excavation, 10,000 CY of general embankment, 5,000 CY of select fill embankment within the roadway, 15,500 CY of flex base for roadway and 10,600 TN of TY B asphalt paving with associated curb & gutter. Utility improvements consisted of steel casing for future waterlines, RCP SSL and a bridge class culvert, single barrel 10'x6'- 205 LF long. Project was completed on time and on budget
- **Superintendent on Brushy Creek Regional Trail Phase 5** - This project is the 5th phase of the trail system that parallels brushy creek. The scope consisted of constructing approximately 3,600 LF of new concrete trail on two sides of brushy creek, just west of round rock. The work included installation of three precast concrete boardwalk systems with pedestrian handrail that utilized CIP columns and piers, and precast caps, beams, and decks. A 120 ft prefabricated steel truss bridge was installed to span the creek and connect two of the boardwalk systems. Setting the bridge underneath ICRA electrical transmission lines presented a difficult challenge.
- **Superintendent on Department of Public Safety Emergency Vehicles Operation Course**, Florence, TX Owner - Texas Department of Public Safety – CM at Risk contract. Over 1,000,000 SF of concrete skills pads and 6.2-mile asphalt/concrete road track for vehicle skills and training, a skid pan for hydroplaning maneuvers and a grid of intersecting “city” streets complete with signalized intersections. During construction of the original \$23.8 million dollar project a \$3.7 million dollar change order was issued to construct a vehicle maintenance building. The project won the Gold Award for Industrial and Special Paving from the American Concrete Paving Association for 2010. Total project cost was \$27.5M.
- **Superintendent on Brushy Creek Regional Trail, Phase 3**, Cedar Park, TX. This was a 2.6-mile section of 10' wide concrete trail on the Brushy Creek Regional Trail System. The trail project from Parmer Lane to the Cedar Park YMCA consisted of clearing, grading, culverts, 10' wide concrete trail, fencing, handrail and a wood boardwalk. There were also five 30' to 90' long engineered steel bridges with abutments and drilled piers that crossed Brushy Creek and its tributaries.
- **Superintendent on City of Round Rock Historic District Improvements** – New sidewalks, street and drainage improvements in historic downtown Round Rock, Texas. Included a requirement to keep all shops open and other various downtown businesses in continuous operation throughout the project.
- **Superintendent on Rivery Blvd. Bridge**, Georgetown, TX – The Rivery Blvd. Bridge is a 350' long by 75' wide four lane bridge with center median that runs 35' above the South San Gabriel River in Georgetown, Texas. From a logistical standpoint the construction of the bridge was particularly challenging due to the existing and drastically different topography on the river. The north side had a sheer cliff face providing no access to the river below. The south side had a more gradual slope down to the river but required over 100,000 CY of embankment to raise the roadway to the designed elevation. Access for placing the foundation piers and constructing the interior bridge bents had to all be completed from the south side of the river.

References

Ryan Bartholomew
Lauren Concrete
(512) 389-2112

John Aldridge, P.E.
City of Georgetown, Texas
(512) 930-3555



R É S U M É

Rick Risener
Chief Civil Estimator

Education

Abilene Christian University

Training

OSHA 10 HR

Work History and Background

Rick has over 22 years of experience in residential, commercial, airport, heavy highway and civil construction. Rick has worked on projects that vary from pedestrian, vehicular, and railway bridges, public and private roadways, concrete and earthen dams, public parks and trail systems, subdivision infrastructure, site and pipeline utilities, site grading and site concrete work, single building and strip retail, multi-story office and medical buildings, pre-cast and cast-in-place concrete garages, and custom home building.

Project Experience

- Pedernales Summit Parkway Section 2, Bee Cave, TX – This project included an almost 1-mile extension of an existing roadway to complete the roadway loop. The roadway crossed Bee Creek which was spanned by a 300' prestressed concrete beam bridge with 4 bents. 4,300 LF of 18"-60" storm, 8,000 LF of wastewater, and 5,000 LF of water were installed. 2 ponds with biofiltration systems, a turn lane off of SH 71, 2,800 tons of asphalt and 38,000 SF of sidewalk completed this parkway that services the expanding Sweetwater community.
- SAP ABIA Parking Lot, Austin, TX – The Park and Zoom facility is a 20-acre ground lease parking lot at ABIA. Construction included 2,400 SF operations building, 4,600 LF of water, wastewater and storm drainage piping, 268 drilled piers to support the canopy framing that covers 90% of the site, sitework, site concrete, 69,000 SY of asphalt and 35,000 SF of concrete paving for 1,860 parking spaces. To increase revenue, it was decided to cover the pond which created 75 additional spaces. The original pond was 300' long and 90' wide with 12' tall concrete retaining walls on all 4 sides. The pond was reengineered to accommodate the inclusion of CIP concrete beams on internal columns and pilasters that supported concrete topped hollow core planks.
- Extend Taxiway A (North and South Ends), Austin, TX – This project consisted of expanding both the north and south ends of an existing taxiway at Austin Bergstrom International airport. The extensions were 2,700 lf of 135' wide 16" thick concrete and asphalt taxiway. All the work was done to FAA specifications and was located within the AOA secured area with aircraft traffic crossing the access to the work areas.

References

Mr. Antonio Prete
Waeltz & Prete, Inc
(512) 505-8953
tony@w-pinc.com

Mr. Troy Jamail
HWA Parking/Strickland-Jamail
(512) 592-3277
troy.jamail@hwaparking.com

Mr. James Heironimus
NXP Semiconductors, Inc.
(512) 933-2104
james.heironimus@nxp.com



R E S U M É

Cesar Santander

Utility Manager

Additional Training & Certifications

- CPR Training
- Trench Safety Systems
- OSHA Certified Competent Person Training
- OSHA Certified Confined Space Entry
- Traffic Control
- OSHA 30

Work History and Background

Cesar has been with Chasco for 15 years, working his way up through the rankings. Four years ago he elevated to the role of Utility Manager at Chasco. He can construct all types of underground utilities. One of his greatest assets is his personality: he gets along extremely well with owners, inspectors, and his fellow teammates at Chasco.

Project Experience

- Formula One, Cottonwood Section 1, Airport Lot G3, Conrac Garage Phase 1, Legacy South Park Apartments,
- Todd Lark Project
- Timmerman School and Stadium
- Freescale 183 and Freescale William Cannon
- MTZ Church
- Kalahari Resort & Conventions is a 350-acre resort that includes retail, indoor water park, a hotel and convention center, and multiple restaurants. It is located adjacent to SH 79 on the east side of Round Rock. Chasco scope includes the installation of the site utilities, drainage, curb and gutter, light pole foundations and all other site concrete including decorative paving for the project.
- Whisper Valley Village 1 Subdivision, Manor, TX – This project included all earthwork, underground utilities, cement treated road base, curb & gutter, asphalt paving, signage & striping, sidewalks, two City of Austin wet ponds, a large vegetative filter strip and all revegetation on a 50+ acre new subdivision.
- Braker Lane Extension, Manor, TX – This project included a 1.5-mile boulevard connected to FM 973 and extending east toward Taylor Lane. The major scopes of work included extensive earthwork, lime stabilized road base, curb & gutter, asphalt paving, signage & striping, a TXDOT turn lane connecting to the boulevard, underground storm drainage, sidewalks, one wet pond, four water quality filter ponds, multiple large drainage channels, revegetation and over 3 miles of TXDOT fencing.



Jonathan Escalante, CSHO, CHST
Director of Health and Safety

R E S U M É

Education

Universidad Valle Del Bravo, Mexico 2005

Additional Training & Certificates:

- CSHO (Certified Safety and Health Official)
- CHST (Construction Health and Safety Technician)
- OSHA 500 Trainer Course in Occupational Safety and Health Standards for the Construction Industry
- OSH510 Occupational Standards for the Construction Industry
- OSH311 Fall Protection
- OSH521 Industrial Hygiene
- PRT260 Cranes and Material Handling
- OSH301 Excavation, Trenching and Soil Mechanics
- CPR/FA Certified Trainer
- PRT123 Scaffold Training
- Traffic Control Flagger Training (Train the trainer)
- OSH755 Accident Investigation

Project Experience

SH 130 - Lone Star Infrastructure. Hutto, Tx. (10/2005-8/2009)

Position: Safety Supervisor / HR Assistant **Project Value:** 1.6 Billion USD

Main activities:

- Responsible for day to day environmental health and safety related activity with a specific focus on reducing incident rates and workers comp.
- Develop and implement required Safety Programs and progressive disciplinary actions.
- Develop Safety incentive program
- Implement accident prevention program
- Field Safety Inspections
- Provide monthly reports to the Fluor Corporate Office, including accident investigations, injury summary reports (man-hours included) and project close out-forms.

Safety Director (08/2009 – Present)

- Accident investigation / Case manager
- Conduct Mass meetings, Safety talks.
- New Hire Safety Orientation
- Training such as: Fall Protection, Confined Space, Haz-Mat, Traffic Awareness
- Responsible for OSHA compliance and record keeping, Worker's Comp Issues
- Random Drug testing coordinator (DOT and Non-DOT)
- HR New hire orientation
- Minor HR duties such as: Terminations, spreadsheet, employee benefits.
- Coordinate office management and special projects with a high degree of efficiency.
- Manage capital purchases, direct vendor relations, generate and maintain equipment tracking records.

Construcciones del Panuco. Mexico (06/2002-09/2005)

Position: Safety Apprentice

Main activities:

- Protect Health and Safety of the employees as well as the company.
- Follow Safety Standards set by the Social Security Safety Regulation of the Mexican Institute.
- Safety inspections / investigations.
- Medical Case Management
- Safety Training to employees (adapted by OSHA 1926)
- Report all data of incidents / accidents to CEO monthly.

References

Mr. Ignacio Guerra
Fluor Daniel Ent.
(210) 273-1774

Brayan Loya
Fluor Daniel Ent.
(512) 769-4339

Larry Connelly
AGC of Austin
(512) 748-1830



RESUMÉ

Charles J. (Chuck) Glace, Jr.

President

Education

Central Michigan University / U.T. Austin

Work History and Background

Chuck has over 38 years of diversified construction experience. He has extensive background in concrete flatwork, structural concrete, tilt-wall, decorative concrete, excavation, and utility work. Chuck has complete responsibility for overall coordination of Chasco's operations. To him, the retention and advancement of individuals speaks directly to Chasco's success. Chuck is a driving force in the organization and training of Chasco's talent in both the office and the field. He provides ongoing leadership to the management team and to the self-perform operations, helping Chasco to provide better control and exceptional service to its customers. Chuck serves on the Board of the YMCA of Round Rock. He is also a board member of the Round Rock Chamber, a board member of the American Concrete Institute, a member of the Construction Specifications Institute, the American Society of Concrete Construction, the Associated General Contractors of America, and a Board member of The Round Rock Community Foundation.

Project Experience

- Georgetown Hospital, Georgetown, TX – 40,000 SF Addition / Renovation, including 3-story concrete building with pan slab construction.
- South Austin Hospital, Austin, TX – New surgery wing.
- AMP Packaging Office and Manufacturing Facility, Round Rock, TX – Design/Build Contract for 58,000 SF tiltwall computer manufacturing facility.
- Interpoint Retail Center, Austin, TX – 160,000 SF cast in place concrete structure with underground parking garage.
- Tellabs Operations, Round Rock, TX – 48,000 SF tiltwall manufacturing addition to the existing facility.
- Classic Toyota, Round Rock, TX – Construction of a new car sales building, body shop, parking, drives, new car display, and detention / filtration structures.
- Austin VA Hospital / Clinic, Austin, TX – 45,000 SF slab on grade with related site work.
- St. Philips Family Life Center, Round Rock, TX – 11,000 SF church facility, including worship areas, class rooms, elevated altar / stage, commercial food preparation, and child care.
- Shoal Creek Bridge, Austin, TX – New 2-span bridge over Shoal Creek including channel work and slope protection to flood prone creek.
- Expo Business Park, Austin, TX – Two 124,000 SF concrete tiltwall buildings, including all site development and utility construction.

References

Mr. Mark Remmert
Chief Building Inspector
City of Round Rock
512-218-6600

Mr. Brent Jones, P.E.
Civil Engineer
Randall Jones Engineering
(512) 415-3012

Mr. Chad McDowell
General Services Director
City of Round Rock
(512) 671-2890

RESUMÉ



Charles R. King

CFO, Vice President, Secretary and Treasurer

Education

BBA in Accounting – Lamar University

CPA Certification – Texas Society of CPA's

Work History and Background

Charles has over 40 years experience as an entrepreneurial financial accountant. He began his career with a national accounting firm prior to joining a local CPA firm. As a partner in this firm, he was responsible for a wide array of tax and financial accounting engagements for small businesses and individuals. Subsequently, he spent 15 years as CFO of a multi-location, multi-franchise car dealership conglomerate. In this role he was responsible for the financial, treasury and IT functions.

At Chasco, Charles is responsible for the financial function, as well as strategic planning, tax issues and cash management.

References

Mr. Troy Voelker
McNery & Voelker
512-255-6940

Mr. Jeff Anderson
RSM Austin, CPA's
512-476-0717



R E S U M É

Tony Glace

Vice President/Concrete Manager

Education

Texas A&M University
BS Building Construction
University of Toledo
Architectural Technology

Additional Training & Certifications:

OSHA 30 Hour Safety Training
Excavation Training
MSHA Mine Safety 40 Hour

Work History and Background

Tony has over 40 years of construction experience with Chasco Constructors. As a field foreman and Superintendent, Tony has extensive experience in all areas of construction including heavy/highway and commercial/industrial buildings. He has constructed bridges and box culverts, multi-story concrete buildings, concrete walls up to 35 feet in height, tilt wall, and all phases of site work. Chasco relies on Tony's ability to manage our most complex and time restricted projects. Tony now oversees all of Chasco's concrete operations. Which includes 17 crews.

Project Experience

- Shops at Tech Ridge Retail Center, Austin, TX - 11 concrete tilt wall shell buildings, totaling over 200,000 square feet on a 50 acre site. Numerous retaining walls up to 35 feet in height, sidewalks, paving, storm system and all utilities.
- StoneCreek II Office Project, Austin, TX – 165,000 SF Class "A" four story office building with a 240,000 SF four-story parking garage. This project incorporated a tremendous amount of cast in place structural reinforced concrete as well as precast concrete components. This project was completed in record time and delivered to Ownership 2 months ahead of schedule.
- AT&T Web Hosting Facility – 131,000 SF Tilt Wall Structure with EIFS accents that included approximately 12 acres of associated site improvements, utilities, and detention filtration ponds. The shell building was completed and turned over to Ownership in less than 150 days
- Eastside Post Office, Round Rock, TX- 60,000 SF postal facility for the Federal Government and the City of Round Rock. This project included extensive site work and concrete paving as well as a completed finished out and functional building with an ornate masonry exterior and sophisticated interior amenities and security devices.
- Airport Taxiways & Holding Aprons, Georgetown, TX- A strategically planned and coordinated site improvement project of major runways and taxiways including modifications and improvements to the existing storm drainage and grading around the airport. Project included adding new airplane staging areas as well as re-surfacing of existing runways.
- TXDOT Storm Water Filtration Ponds – A multi-million dollar site development project located in the environmentally critical Edwards Aquifer Re-charge Zone. This project included major rock excavation, embankment shoring, and highly engineered structurally tapered concrete retaining walls in excess of 30 feet in height.
- Austin Aero FBO – Construction of 5 aircraft hangers and a two-story terminal building. Then project infrastructure included all under ground utilities, site concrete and HMAC paving. It involved working closely with NAPT during the new construction of Austin-Bergstrom International Airport.

References

Ryan Bartholomew
Lauren Concrete
(512) 470-7926

R.J. Nitsche
The Nitsche Group
(979) 540-2225

Ronnie Prado
Prado Enterprises
(512) 848-9446

BRUSHY CREEK REGIONAL TRAIL ALONG HAIRY MAN ROAD
 BIDTAB
 1/30/2025
 RvI PROJECT NUMBER: 20000381



ITEM NO	DESCRIPTION	UNIT	QUANTITY	UNIT COST	TOTAL COST
CIVIL					
0100-7002	PREPARING ROW	STA	71	\$ 3,070.00	\$ 217,970.00
0100-7003	PREP ROW (TREE REMOVE) (0"-12" DIA)	EA	14	\$ 750.00	\$ 10,500.00
0100-7004	PREP ROW (TREE REMOVE) (12"-24" DIA)	EA	3	\$ 1,850.00	\$ 5,550.00
0104-7006	REMOV CONC (RIPRAP)	SY	75	\$ 20.00	\$ 1,500.00
0104-7008	REMOV CONC (MEDIANS)	SY	33	\$ 20.00	\$ 660.00
0110-7001	EXCAV (ROADWAY)	CY	4108	\$ 30.00	\$ 123,240.00
0132-7015	EMBANK (VEH)(OC)(TY B)	CY	2917	\$ 18.00	\$ 52,506.00
0161-7002	COMPOST MANUF TOPSOIL (4")	SY	17090	\$ 3.00	\$ 51,270.00
0164-7012	DRILL SEED (PERM URBAN CLAY)	SY	17090	\$ 0.25	\$ 4,272.50
0168-7001	VEGETATIVE WATERING	TGL	29.6	\$ 100.00	\$ 2,960.00
0169-7001	SOIL RET BLKT(SL MOD CLAY SHORT)	SY	5133	\$ 1.50	\$ 7,699.50
0170-7001	IRRIGATION SYSTEM	LS	1	\$ 16,000.00	\$ 16,000.00
0194-7007	ROADSIDE AMENITY (WHEEL STOP)	EA	21	\$ 130.00	\$ 2,730.00
0194-7010	ROADSIDE AMENITY (BOULDER)	EA	20	\$ 360.00	\$ 7,200.00
0247-7044	FL BS (CMP IN PLC)(TY D GR1-2 OR 5)(6")	SY	1263	\$ 15.00	\$ 18,945.00
0310-7015	PRIME COAT (MULTI OPTION)	GAL	316	\$ 8.00	\$ 2,528.00
0341-7001	D-GR HMA TY-B PG64-22	TON	384	\$ 140.00	\$ 53,760.00
0341-7058	D-GR HMA TY-D SAC-B PG76-22	TON	128	\$ 220.00	\$ 28,160.00
0341-7082	TACK COAT	GAL	279	\$ 9.00	\$ 2,511.00
0360-7002	CONC PVMT (CRCP) (8")	SY	199	\$ 155.00	\$ 30,845.00
0420-7006	CL A CONC (FLUME)	CY	43	\$ 2,000.00	\$ 86,000.00
0423-7014	RETAINING WALL (STONE)	SF	90	\$ 65.00	\$ 5,850.00
0432-7002	RIPRAP (CONC)(5 IN)	CY	100	\$ 1,200.00	\$ 120,000.00
0432-7003	RIPRAP (CONC)(6 IN)	CY	18	\$ 1,200.00	\$ 21,600.00
0442-7007	STR STEEL (MISC NON-BRIDGE)	LB	26250	\$ 3.50	\$ 91,875.00
0462-7011	CONC BOX CULV (6 FT X 3 FT)	LF	162	\$ 790.00	\$ 127,980.00
0464-7005	RC PIPE (CL III)(24 IN)	LF	140	\$ 110.00	\$ 15,400.00
0464-7032	RC PIPE (CL V)(18 IN)	LF	66	\$ 105.00	\$ 6,930.00
0465-7070	INLET (COMPL)(PSL)(RC)(3FTX3FT)	EA	1	\$ 5,500.00	\$ 5,500.00
0466-7033	HEADWALL (CH - FW - 30) (DIA= 18 IN)	EA	1	\$ 6,000.00	\$ 6,000.00
0466-7105	HEADWALL (CH - PW - 0) (DIA= 36 IN)	EA	1	\$ 9,000.00	\$ 9,000.00
0466-7114	HEADWALL (CH - PW - S) (DIA= 18 IN)	EA	1	\$ 7,000.00	\$ 7,000.00
0466-7160	WINGWALL (FW - S) (HW=4 FT)	EA	2	\$ 11,000.00	\$ 22,000.00
0466-7161	WINGWALL (FW - S) (HW=5 FT)	EA	2	\$ 13,000.00	\$ 26,000.00
0496-7019	REMOV STR (RET WALL)	LF	46	\$ 30.00	\$ 1,380.00
0500-7001	MOBILIZATION	LS	1	\$ 401,000.00	\$ 401,000.00
0502-7001	BARRICADES, SIGNS AND TRAFFIC HANDLING	MO	10	\$ 3,500.00	\$ 35,000.00
0503-7001	PORTABLE CHANGEABLE MESSAGE SIGN	DAY	260	\$ 50.00	\$ 13,000.00
0506-7002	ROCK FILTER DAMS (INSTALL) (TY 2)	LF	235	\$ 35.00	\$ 8,225.00
0506-7011	ROCK FILTER DAMS (REMOVE)	LF	235	\$ 20.00	\$ 4,700.00
0506-7020	CONSTRUCTION EXITS (INSTALL) (TY 1)	SY	336	\$ 21.00	\$ 7,056.00
0506-7024	CONSTRUCTION EXITS (REMOVE)	SY	336	\$ 10.00	\$ 3,360.00
0506-7039	TEMP SEDMT CONT FENCE (INSTALL)	LF	8463	\$ 4.00	\$ 33,852.00
0506-7041	TEMP SEDMT CONT FENCE (REMOVE)	LF	8463	\$ 1.00	\$ 8,463.00
0506-7043	BIODEG EROSN CONT LOGS (INSTL) (8")	LF	177	\$ 7.00	\$ 1,239.00
0506-7046	BIODEG EROSN CONT LOGS (REMOVE)	LF	177	\$ 2.00	\$ 354.00
0529-7001	CONC CURB (TY I)	LF	367	\$ 35.00	\$ 12,845.00
0529-7002	CONC CURB (TY II)	LF	129	\$ 50.00	\$ 6,450.00
0529-7016	CONC CURB (TY C1)	LF	875	\$ 240.00	\$ 210,000.00
0531-7003	CONC SIDEWALKS (6")	SY	7587	\$ 104.00	\$ 789,048.00
0531-7010	CURB RAMPS (TY 7)	EA	4	\$ 2,900.00	\$ 11,600.00
0550-XXXX	SPLIT RAIL FENCE	LF	100	\$ 45.00	\$ 4,500.00
0644-7001	IN SM RD SN SUP&AM TY10BWG(1)SA(P)	EA	4	\$ 1,150.00	\$ 4,600.00
0644-7065	RELOCATE SM RD SN SUP&AM TY 10BWG	EA	3	\$ 800.00	\$ 2,400.00
0666-7003	REFL PAV MRK TY I (W)4"(DOT)(100MIL)	LF	472	\$ 3.50	\$ 1,652.00
0666-7036	REFL PAV MRK TY I (W)24"(SLD)(100MIL)	LF	253	\$ 18.00	\$ 4,554.00
0666-7084	REFL PAV MRK TY I (W)(SYMBOL)(100MIL)	EA	2	\$ 680.00	\$ 1,360.00
0666-7352	PAVEMENT SLER 24"	LF	253	\$ 6.00	\$ 1,518.00
0678-7001	PAV SURF PREP FOR MRK (4")	LF	472	\$ 1.50	\$ 708.00
0678-7008	PAV SURF PREP FOR MRK (24")	LF	253	\$ 3.00	\$ 759.00
0678-7021	PAV SURF PREP FOR MRK (SYMBOL)	EA	2	\$ 110.00	\$ 220.00
3006-7001	UNDERSEAL COURSE	GAL	334	\$ 14.00	\$ 4,676.00
7016-6068	NEW SEWER SERVICE LATERAL	EA	1	\$ 50,000.00	\$ 50,000.00
7016-60SS	48 IN SANITARY MANHOLE	EA	1	\$ 10,000.00	\$ 10,000.00
7016-60XX	NEW WATER SERVICE (1-1/2IN)	EA	1	\$ 35,000.00	\$ 35,000.00
W-100	WATER WELL PLUG/ ABANDONMENT	LS	1	\$ 10,000.00	\$ 10,000.00

ITEM NO	DESCRIPTION	UNIT	QUANTITY	UNIT COST	TOTAL COST
LANDSCAPE					
100	TREE PROTECTION FENCE	LF	8550	\$ 5.00	\$ 42,750.00
192	SHADE TREES	EA	30	\$ 1,350.00	\$ 40,500.00
192	ORNAMENTAL TREES	EA	11	\$ 630.00	\$ 6,930.00
192	SHRUBS AND GRASSES	EA	130	\$ 35.00	\$ 4,550.00
192	EDGING	LF	310	\$ 7.00	\$ 2,170.00
164	GROUND COVER	SF	632	\$ 18.00	\$ 11,376.00
323300	BIKE RACKS	EA	2	\$ 1,500.00	\$ 3,000.00
SS-1	TRAIL INFORMATIONAL SIGN	EA	1	\$ 4,200.00	\$ 4,200.00
SS-1	TRAIL DIRECTIONAL SIGN	EA	1	\$ 2,600.00	\$ 2,600.00
SS-2	TRAIL MILE MARKER	EA	4	\$ 1,750.00	\$ 7,000.00
SS-3	POST AND SIGN GATE	LS	1	\$ 4,700.00	\$ 4,700.00
SS-4	SITE LIGHTING AND ELECTRICAL	LS	1	\$ 50,000.00	\$ 50,000.00
ARCHITECTURE					
SS-5.1	PREFABRICATED RESTROOM AND UTILITY CONNECTIONS	LS	1	\$ 190,000.00	\$ 190,000.00
SS-5.2	RESTROOM PAD PREPARATION	LS	1	\$ 3,400.00	\$ 3,400.00
				BASE BID TOTAL	\$ 3,244,637.00
BID ADD ALTERNATE					
ITEM NO	DESCRIPTION	UNIT	QUANTITY	UNIT COST	TOTAL COST
CIVIL					
0100-7002	PREPARING ROW	STA	10	\$ 9,500.00	\$ 95,000.00
0100-7003	PREP ROW (TREE REMOVE) (0-12" DIA)	EA	2	\$ 750.00	\$ 1,500.00
0100-7004	PREP ROW (TREE REMOVE) (12-24" DIA)	EA	4	\$ 1,850.00	\$ 7,400.00
0110-7001	EXCAV (ROADWAY)	CY	491	\$ 40.00	\$ 19,640.00
0110-7002	EXCAV (CHANNEL)	CY	197	\$ 50.00	\$ 9,850.00
0132-7015	EMBANK (VEH)(OC)(TY B)	CY	45	\$ 25.00	\$ 1,125.00
0161-7002	COMPOST MANUF TOPSOIL (4")	SY	2409	\$ 3.00	\$ 7,227.00
0164-7012	DRILL SEED (PERM URBAN CLAY)	SY	2409	\$ 0.25	\$ 602.25
0168-7001	VEGETATIVE WATERING	TGL	4.2	\$ 300.00	\$ 1,260.00
0169-7001	SOIL RET BLKT(SL MOD CLAY SHORT)	SY	1497	\$ 2.00	\$ 2,994.00
0400-7010	CEM STABIL BKFL	CY	24	\$ 300.00	\$ 7,200.00
0416-7004	DRILL SHAFT (24 IN)	LF	180	\$ 310.00	\$ 55,800.00
0420-7006	CL A CONC (FLUME)	CY	5	\$ 1,850.00	\$ 9,250.00
0420-7012	CL C CONC (ABUT)	CY	15.2	\$ 2,350.00	\$ 35,720.00
0420-7022	CL C CONC (CAP)	CY	16.5	\$ 2,750.00	\$ 45,375.00
0420-7038	CL C CONC (COLUMN)	CY	2.8	\$ 4,000.00	\$ 11,200.00
0422-6019	SLAB SPAN	CY	140	\$ 2,350.00	\$ 329,000.00
0432-7002	RIPRAP (CONC)(5 IN)	CY	22.8	\$ 1,200.00	\$ 27,360.00
0432-7047	RIPRAP (STONE PROTECTION)(30 IN)	CY	140.3	\$ 300.00	\$ 42,090.00
0442-7007	STR STEEL (MISC NON-BRIDGE)	LB	2625	\$ 3.75	\$ 9,843.75
0500-7001	MOBILIZATION	LS	1	\$ 55,000.00	\$ 55,000.00
0502-7001	BARRICADES, SIGNS AND TRAFFIC HANDLING	MO	6	\$ 1,000.00	\$ 6,000.00
0506-7039	TEMP SEDMT CONT FENCE (INSTALL)	LF	2028	\$ 4.00	\$ 8,112.00
0506-7041	TEMP SEDMT CONT FENCE (REMOVE)	LF	2028	\$ 1.00	\$ 2,028.00
0531-7003	CONC SIDEWALKS (6")	SY	1093	\$ 104.00	\$ 113,672.00
0644-7001	IN SM RD SN SUP&AM TY10BWG(1)SA(P)	EA	3	\$ 1,150.00	\$ 3,450.00
LANDSCAPE					
100	TREE PROTECTION FENCE	LF	1420	\$ 5.00	\$ 7,100.00
BID ALT TOTAL					\$ 914,799.00
BASE BID + BID ALT					\$ 4,159,436.00

BRUSHY CREEK REGIONAL TRAIL ALONG HAIRY MAN ROAD
 BIDTAB
 1/30/2025
 RvI PROJECT NUMBER: 20000381



ITEM NO	DESCRIPTION	UNIT	QUANTITY	UNIT COST	TOTAL COST
CIVIL					
0100-7002	PREPARING ROW	STA	71	\$ 2,500.00	\$ 177,500.00
0100-7003	PREP ROW (TREE REMOVE) (0"-12" DIA)	EA	14	\$ 750.00	\$ 10,500.00
0100-7004	PREP ROW (TREE REMOVE) (12"-24" DIA)	EA	3	\$ 1,500.00	\$ 4,500.00
0104-7006	REMOV CONC (RIPRAP)	SY	75	\$ 20.00	\$ 1,500.00
0104-7008	REMOV CONC (MEDIANS)	SY	33	\$ 20.00	\$ 660.00
0110-7001	EXCAV (ROADWAY)	CY	4108	\$ 30.00	\$ 123,240.00
0132-7015	EMBANK (VEH)(OC)(TY B)	CY	2917	\$ 18.00	\$ 52,506.00
0161-7002	COMPOST MANUF TOPSOIL (4")	SY	17090	\$ 2.00	\$ 34,180.00
0164-7012	DRILL SEED (PERM URBAN CLAY)	SY	17090	\$ 0.25	\$ 4,272.50
0168-7001	VEGETATIVE WATERING	TGL	29.6	\$ 100.00	\$ 2,960.00
0169-7001	SOIL RET BLKT(SL MOD CLAY SHORT)	SY	5133	\$ 1.50	\$ 7,699.50
0170-7001	IRRIGATION SYSTEM	LS	1	\$ 16,000.00	\$ 16,000.00
0194-7007	ROADSIDE AMENITY (WHEEL STOP)	EA	21	\$ 130.00	\$ 2,730.00
0194-7010	ROADSIDE AMENITY (BOULDER)	EA	20	\$ 360.00	\$ 7,200.00
0247-7044	FL BS (CMP IN PLC)(TY D GR1-2 OR 5)(6")	SY	1263	\$ 15.00	\$ 18,945.00
0310-7015	PRIME COAT (MULTI OPTION)	GAL	316	\$ 8.00	\$ 2,528.00
0341-7001	D-GR HMA TY-B PG64-22	TON	384	\$ 140.00	\$ 53,760.00
0341-7058	D-GR HMA TY-D SAC-B PG76-22	TON	128	\$ 220.00	\$ 28,160.00
0341-7082	TACK COAT	GAL	279	\$ 9.00	\$ 2,511.00
0360-7002	CONC PVMT (CRCP) (8")	SY	199	\$ 155.00	\$ 30,845.00
0420-7006	CL A CONC (FLUME)	CY	43	\$ 1,850.00	\$ 79,550.00
0423-7014	RETAINING WALL (STONE)	SF	90	\$ 65.00	\$ 5,850.00
0432-7002	RIPRAP (CONC)(5 IN)	CY	100	\$ 1,200.00	\$ 120,000.00
0432-7003	RIPRAP (CONC)(6 IN)	CY	18	\$ 1,200.00	\$ 21,600.00
0442-7007	STR STEEL (MISC NON-BRIDGE)	LB	26250	\$ 3.50	\$ 91,875.00
0462-7011	CONC BOX CULV (6 FT X 3 FT)	LF	162	\$ 790.00	\$ 127,980.00
0464-7005	RC PIPE (CL III)(24 IN)	LF	140	\$ 110.00	\$ 15,400.00
0464-7032	RC PIPE (CL V)(18 IN)	LF	66	\$ 105.00	\$ 6,930.00
0465-7070	INLET (COMPL)(PSL)(RC)(3FTX3FT)	EA	1	\$ 5,500.00	\$ 5,500.00
0466-7033	HEADWALL (CH - FW - 30) (DIA= 18 IN)	EA	1	\$ 6,000.00	\$ 6,000.00
0466-7105	HEADWALL (CH - PW - 0) (DIA= 36 IN)	EA	1	\$ 9,000.00	\$ 9,000.00
0466-7114	HEADWALL (CH - PW - S) (DIA= 18 IN)	EA	1	\$ 7,000.00	\$ 7,000.00
0466-7160	WINGWALL (FW - S) (HW=4 FT)	EA	2	\$ 11,000.00	\$ 22,000.00
0466-7161	WINGWALL (FW - S) (HW=5 FT)	EA	2	\$ 13,000.00	\$ 26,000.00
0496-7019	REMOV STR (RET WALL)	LF	46	\$ 30.00	\$ 1,380.00
0500-7001	MOBILIZATION	LS	1	\$ 374,500.00	\$ 374,500.00
0502-7001	BARRICADES, SIGNS AND TRAFFIC HANDLING	MO	10	\$ 3,500.00	\$ 35,000.00
0503-7001	PORTABLE CHANGEABLE MESSAGE SIGN	DAY	260	\$ 50.00	\$ 13,000.00
0506-7002	ROCK FILTER DAMS (INSTALL) (TY 2)	LF	235	\$ 35.00	\$ 8,225.00
0506-7011	ROCK FILTER DAMS (REMOVE)	LF	235	\$ 20.00	\$ 4,700.00
0506-7020	CONSTRUCTION EXITS (INSTALL) (TY 1)	SY	336	\$ 21.00	\$ 7,056.00
0506-7024	CONSTRUCTION EXITS (REMOVE)	SY	336	\$ 10.00	\$ 3,360.00
0506-7039	TEMP SEDMT CONT FENCE (INSTALL)	LF	8463	\$ 4.00	\$ 33,852.00
0506-7041	TEMP SEDMT CONT FENCE (REMOVE)	LF	8463	\$ 1.00	\$ 8,463.00
0506-7043	BIODEG EROSN CONT LOGS (INSTL) (8")	LF	177	\$ 7.00	\$ 1,239.00
0506-7046	BIODEG EROSN CONT LOGS (REMOVE)	LF	177	\$ 2.00	\$ 354.00
0529-7001	CONC CURB (TY I)	LF	367	\$ 35.00	\$ 12,845.00
0529-7002	CONC CURB (TY II)	LF	129	\$ 50.00	\$ 6,450.00
0529-7016	CONC CURB (TY C1)	LF	875	\$ 240.00	\$ 210,000.00
0531-7003	CONC SIDEWALKS (6")	SY	7587	\$ 95.00	\$ 720,765.00
0531-7010	CURB RAMPS (TY 7)	EA	4	\$ 2,900.00	\$ 11,600.00
0550-XXXX	SPLIT RAIL FENCE	LF	100	\$ 45.00	\$ 4,500.00
0644-7001	IN SM RD SN SUP&AM TY10BWG(1)SA(P)	EA	4	\$ 1,150.00	\$ 4,600.00
0644-7065	RELOCATE SM RD SN SUP&AM TY 10BWG	EA	3	\$ 800.00	\$ 2,400.00
0666-7003	REFL PAV MRK TY I (W)4"(DOT)(100MIL)	LF	472	\$ 3.50	\$ 1,652.00
0666-7036	REFL PAV MRK TY I (W)24"(SLD)(100MIL)	LF	253	\$ 18.00	\$ 4,554.00
0666-7084	REFL PAV MRK TY I (W)(SYMBOL)(100MIL)	EA	2	\$ 680.00	\$ 1,360.00
0666-7352	PAVEMENT SLER 24"	LF	253	\$ 6.00	\$ 1,518.00
0678-7001	PAV SURF PREP FOR MRK (4")	LF	472	\$ 1.50	\$ 708.00
0678-7008	PAV SURF PREP FOR MRK (24")	LF	253	\$ 3.00	\$ 759.00
0678-7021	PAV SURF PREP FOR MRK (SYMBOL)	EA	2	\$ 110.00	\$ 220.00
3006-7001	UNDERSEAL COURSE	GAL	334	\$ 14.00	\$ 4,676.00
7016-6068	NEW SEWER SERVICE LATERAL	EA	1	\$ 50,000.00	\$ 50,000.00
7016-60SS	48 IN SANITARY MANHOLE	EA	1	\$ 10,000.00	\$ 10,000.00
7016-60XX	NEW WATER SERVICE (1-1/2IN)	EA	1	\$ 35,000.00	\$ 35,000.00
W-100	WATER WELL PLUG/ ABANDONMENT	LS	1	\$ 10,000.00	\$ 10,000.00

ITEM NO	DESCRIPTION	UNIT	QUANTITY	UNIT COST	TOTAL COST
LANDSCAPE					
100	TREE PROTECTION FENCE	LF	8550	\$ 5.00	\$ 42,750.00
192	SHADE TREES	EA	30	\$ 1,350.00	\$ 40,500.00
192	ORNAMENTAL TREES	EA	11	\$ 630.00	\$ 6,930.00
192	SHRUBS AND GRASSES	EA	130	\$ 35.00	\$ 4,550.00
192	EDGING	LF	310	\$ 7.00	\$ 2,170.00
164	GROUND COVER	SF	632	\$ 18.00	\$ 11,376.00
323300	BIKE RACKS	EA	2	\$ 1,500.00	\$ 3,000.00
SS-1	TRAIL INFORMATIONAL SIGN	EA	1	\$ 4,200.00	\$ 4,200.00
SS-1	TRAIL DIRECTIONAL SIGN	EA	1	\$ 2,600.00	\$ 2,600.00
SS-2	TRAIL MILE MARKER	EA	4	\$ 1,750.00	\$ 7,000.00
SS-3	POST AND SIGN GATE	LS	1	\$ 4,700.00	\$ 4,700.00
SS-4	SITE LIGHTING AND ELECTRICAL	LS	1	\$ 50,000.00	\$ 50,000.00
ARCHITECTURE					
SS-5.1	PREFABRICATED RESTROOM AND UTILITY CONNECTIONS	LS	1	\$ 185,000.00	\$ 185,000.00
SS-5.2	RESTROOM PAD PREPARATION	LS	1	\$ 3,400.00	\$ 3,400.00
				BASE BID TOTAL	\$ 3,079,794.00
BID ADD ALTERNATE					
ITEM NO	DESCRIPTION	UNIT	QUANTITY	UNIT COST	TOTAL COST
CIVIL					
0100-7002	PREPARING ROW	STA	10	\$ 7,500.00	\$ 75,000.00
0100-7003	PREP ROW (TREE REMOVE) (0-12" DIA)	EA	2	\$ 750.00	\$ 1,500.00
0100-7004	PREP ROW (TREE REMOVE) (12-24" DIA)	EA	4	\$ 1,500.00	\$ 6,000.00
0110-7001	EXCAV (ROADWAY)	CY	491	\$ 40.00	\$ 19,640.00
0110-7002	EXCAV (CHANNEL)	CY	197	\$ 50.00	\$ 9,850.00
0132-7015	EMBANK (VEH)(OC)(TY B)	CY	45	\$ 25.00	\$ 1,125.00
0161-7002	COMPOST MANUF TOPSOIL (4")	SY	2409	\$ 2.00	\$ 4,818.00
0164-7012	DRILL SEED (PERM URBAN CLAY)	SY	2409	\$ 0.25	\$ 602.25
0168-7001	VEGETATIVE WATERING	TGL	4.2	\$ 300.00	\$ 1,260.00
0169-7001	SOIL RET BLKT(SL MOD CLAY SHORT)	SY	1497	\$ 2.00	\$ 2,994.00
0400-7010	CEM STABIL BKFL	CY	24	\$ 300.00	\$ 7,200.00
0416-7004	DRILL SHAFT (24 IN)	LF	180	\$ 310.00	\$ 55,800.00
0420-7006	CL A CONC (FLUME)	CY	5	\$ 1,850.00	\$ 9,250.00
0420-7012	CL C CONC (ABUT)	CY	15.2	\$ 2,350.00	\$ 35,720.00
0420-7022	CL C CONC (CAP)	CY	16.5	\$ 2,750.00	\$ 45,375.00
0420-7038	CL C CONC (COLUMN)	CY	2.8	\$ 4,000.00	\$ 11,200.00
0422-6019	SLAB SPAN	CY	140	\$ 2,350.00	\$ 329,000.00
0432-7002	RIPRAP (CONC)(5 IN)	CY	22.8	\$ 1,200.00	\$ 27,360.00
0432-7047	RIPRAP (STONE PROTECTION)(30 IN)	CY	140.3	\$ 300.00	\$ 42,090.00
0442-7007	STR STEEL (MISC NON-BRIDGE)	LB	2625	\$ 3.75	\$ 9,843.75
0500-7001	MOBILIZATION	LS	1	\$ 43,500.00	\$ 43,500.00
0502-7001	BARRICADES, SIGNS AND TRAFFIC HANDLING	MO	6	\$ 1,000.00	\$ 6,000.00
0506-7039	TEMP SEDMT CONT FENCE (INSTALL)	LF	2028	\$ 4.00	\$ 8,112.00
0506-7041	TEMP SEDMT CONT FENCE (REMOVE)	LF	2028	\$ 1.00	\$ 2,028.00
0531-7003	CONC SIDEWALKS (6")	SY	1093	\$ 95.00	\$ 103,835.00
0644-7001	IN SM RD SN SUP&AM TY10BWG(1)SA(P)	EA	3	\$ 1,150.00	\$ 3,450.00
LANDSCAPE					
100	TREE PROTECTION FENCE	LF	1420	\$ 5.00	\$ 7,100.00
				BID ALT TOTAL	\$ 869,653.00
				BASE BID + BID ALT	\$ 3,949,447.00