

**SUPPLEMENTAL WORK AUTHORIZATION NO. 1  
TO  
WORK AUTHORIZATION NO. 1**

**WILLIAMSON COUNTY ROAD BOND PROJECT:  
PROJECT: CR305**

---

This Supplemental Work Authorization No. 1 to Work Authorization No. 1 is made pursuant to the terms and conditions of the Williamson County Contract for Engineering Services, being dated March 19, 2024 ("Contract") and entered into by and between Williamson County, Texas, a political subdivision of the State of Texas, (the "County") and RS&H, Inc. (the "Engineer").

WHEREAS, the County and the Engineer executed Work Authorization No. 1 dated effective April 2, 2024 (the "Work Authorization");

WHEREAS, pursuant to Article 14 of the Contract, amendments, changes and modifications to a fully executed Work Authorization shall be made in the form of a Supplemental Work Authorization; and

WHEREAS, it has become necessary to amend, change and modify the Work Authorization.

**AGREEMENT**

NOW, THEREFORE, premises considered, the County and the Engineer agree that the Work Authorization shall be amended, changed and modified as follows:

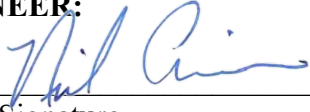
- I. The Work Authorization shall terminate on July 31<sup>th</sup>, 2025. The Services to be Provided by the Engineer shall be fully completed on or before said date unless extended by an additional Supplemental Work Authorization. The revised Work Schedule is attached hereto as Attachment "C" (must be attached).

Except as otherwise amended by prior or future Supplemental Work Authorizations, all other terms of the Work Authorization are unchanged and will remain in full force and effect.

This Supplemental Work Authorization does not waive the parties' responsibilities and obligations provided under the Contract.

IN WITNESS WHEREOF, the County and the Engineer have executed this Supplemental Work Authorization, to be effective as of the date of the last party's execution below.

ENGINEER:

By:   
Signature

Nicholi A. Arnio, PE, PTOE, ENV SP  
Printed Name

Vice President  
Title

April 9, 2025  
Date

COUNTY:

By: \_\_\_\_\_  
Signature

\_\_\_\_\_  
Printed Name

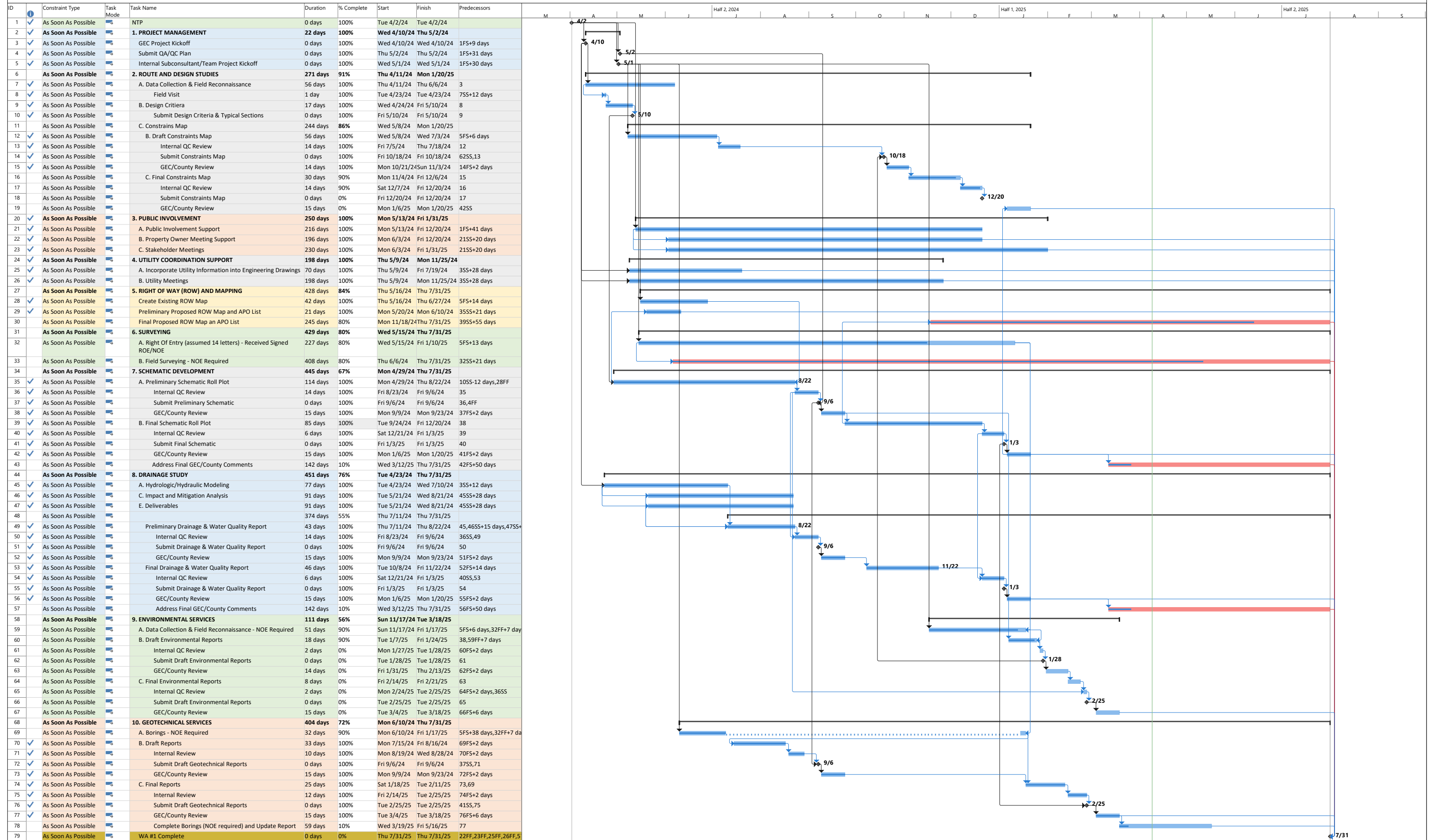
\_\_\_\_\_  
Title

\_\_\_\_\_  
Date

LIST OF ATTACHMENTS

Attachment C - Work Schedule

**APPROVED**  
*By Christen Eschberger at 8:07 am, Apr 10, 2025*



ID	Constraint Type	Task Mode	Task Name	Duration	% Complete	Start	Finish	Predecessors
1	As Soon As Possible	☑	NTP	0 days	100%	Tue 4/2/24	Tue 4/2/24	
2	As Soon As Possible	☑	<b>1. PROJECT MANAGEMENT</b>	<b>22 days</b>	<b>100%</b>	<b>Wed 4/10/24</b>	<b>Thu 5/2/24</b>	
3	As Soon As Possible	☑	GEC Project Kickoff	0 days	100%	Wed 4/10/24	Wed 4/10/24	1FS+9 days
4	As Soon As Possible	☑	Submit QA/QC Plan	0 days	100%	Thu 5/2/24	Thu 5/2/24	1FS+31 days
5	As Soon As Possible	☑	Internal Subconsultant/Team Project Kickoff	0 days	100%	Wed 5/1/24	Wed 5/1/24	1FS+30 days
6	As Soon As Possible	☑	<b>2. ROUTE AND DESIGN STUDIES</b>	<b>271 days</b>	<b>91%</b>	<b>Thu 4/11/24</b>	<b>Mon 1/20/25</b>	
7	As Soon As Possible	☑	A. Data Collection & Field Reconnaissance	56 days	100%	Thu 4/11/24	Thu 6/6/24	3
8	As Soon As Possible	☑	Field Visit	1 day	100%	Tue 4/23/24	Tue 4/23/24	7SS+12 days
9	As Soon As Possible	☑	B. Design Criteria	17 days	100%	Wed 4/24/24	Fri 5/10/24	8
10	As Soon As Possible	☑	Submit Design Criteria & Typical Sections	0 days	100%	Fri 5/10/24	Fri 5/10/24	9
11	As Soon As Possible	☑	C. Constrains Map	244 days	86%	Wed 5/8/24	Mon 1/20/25	
12	As Soon As Possible	☑	B. Draft Constraints Map	56 days	100%	Wed 5/8/24	Wed 7/3/24	5FS+6 days
13	As Soon As Possible	☑	Internal QC Review	14 days	100%	Fri 7/5/24	Thu 7/18/24	12
14	As Soon As Possible	☑	Submit Constraints Map	0 days	100%	Fri 10/18/24	Fri 10/18/24	62SS,13
15	As Soon As Possible	☑	GEC/County Review	14 days	100%	Mon 10/21/24	Sun 11/3/24	14FS+2 days
16	As Soon As Possible	☑	C. Final Constraints Map	30 days	90%	Mon 11/4/24	Fri 12/6/24	15
17	As Soon As Possible	☑	Internal QC Review	14 days	90%	Sat 12/7/24	Fri 12/20/24	16
18	As Soon As Possible	☑	Submit Constraints Map	0 days	0%	Fri 12/20/24	Fri 12/20/24	17
19	As Soon As Possible	☑	GEC/County Review	15 days	0%	Mon 1/6/25	Mon 1/20/25	42SS
20	As Soon As Possible	☑	<b>3. PUBLIC INVOLVEMENT</b>	<b>250 days</b>	<b>100%</b>	<b>Mon 5/13/24</b>	<b>Fri 1/31/25</b>	
21	As Soon As Possible	☑	A. Public Involvement Support	216 days	100%	Mon 5/13/24	Fri 12/20/24	1FS+41 days
22	As Soon As Possible	☑	B. Property Owner Meeting Support	196 days	100%	Mon 6/3/24	Fri 12/20/24	21SS+20 days
23	As Soon As Possible	☑	C. Stakeholder Meetings	230 days	100%	Mon 6/3/24	Fri 1/31/25	21SS+20 days
24	As Soon As Possible	☑	<b>4. UTILITY COORDINATION SUPPORT</b>	<b>198 days</b>	<b>100%</b>	<b>Thu 5/9/24</b>	<b>Mon 11/25/24</b>	
25	As Soon As Possible	☑	A. Incorporate Utility Information into Engineering Drawings	70 days	100%	Thu 5/9/24	Fri 7/19/24	3SS+28 days
26	As Soon As Possible	☑	B. Utility Meetings	198 days	100%	Thu 5/9/24	Mon 11/25/24	3SS+28 days
27	As Soon As Possible	☑	<b>5. RIGHT OF WAY (ROW) AND MAPPING</b>	<b>428 days</b>	<b>84%</b>	<b>Thu 5/16/24</b>	<b>Thu 7/31/25</b>	
28	As Soon As Possible	☑	Create Existing ROW Map	42 days	100%	Thu 5/16/24	Thu 6/27/24	5FS+14 days
29	As Soon As Possible	☑	Preliminary Proposed ROW Map and APO List	21 days	100%	Mon 5/20/24	Mon 6/10/24	3SS+21 days
30	As Soon As Possible	☑	Final Proposed ROW Map an APO List	245 days	80%	Mon 11/18/24	Thu 7/31/25	39SS+55 days
31	As Soon As Possible	☑	<b>6. SURVEYING</b>	<b>429 days</b>	<b>80%</b>	<b>Wed 5/15/24</b>	<b>Thu 7/31/25</b>	
32	As Soon As Possible	☑	A. Right Of Entry (assumed 14 letters) - Received Signed ROE/NOE	227 days	80%	Wed 5/15/24	Fri 1/10/25	5FS+13 days
33	As Soon As Possible	☑	B. Field Surveying - NOE Required	408 days	80%	Thu 6/6/24	Thu 7/31/25	32SS+21 days
34	As Soon As Possible	☑	<b>7. SCHEMATIC DEVELOPMENT</b>	<b>445 days</b>	<b>67%</b>	<b>Mon 4/29/24</b>	<b>Thu 7/31/25</b>	
35	As Soon As Possible	☑	A. Preliminary Schematic Roll Plot	114 days	100%	Mon 4/29/24	Thu 8/22/24	10SS-12 days,28FF
36	As Soon As Possible	☑	Internal QC Review	14 days	100%	Fri 8/23/24	Fri 9/6/24	35
37	As Soon As Possible	☑	Submit Preliminary Schematic	0 days	100%	Fri 9/6/24	Fri 9/6/24	36,4FF
38	As Soon As Possible	☑	GEC/County Review	15 days	100%	Mon 9/9/24	Mon 9/23/24	37FS+2 days
39	As Soon As Possible	☑	B. Final Schematic Roll Plot	85 days	100%	Tue 9/24/24	Fri 12/20/24	38
40	As Soon As Possible	☑	Internal QC Review	6 days	100%	Sat 12/21/24	Fri 1/3/25	39
41	As Soon As Possible	☑	Submit Final Schematic	0 days	100%	Fri 1/3/25	Fri 1/3/25	40
42	As Soon As Possible	☑	GEC/County Review	15 days	100%	Mon 1/6/25	Mon 1/20/25	41FS+2 days
43	As Soon As Possible	☑	Address Final GEC/County Comments	142 days	10%	Wed 3/12/25	Thu 7/31/25	42FS+50 days
44	As Soon As Possible	☑	<b>8. DRAINAGE STUDY</b>	<b>451 days</b>	<b>76%</b>	<b>Tue 4/23/24</b>	<b>Thu 7/31/25</b>	
45	As Soon As Possible	☑	A. Hydrologic/Hydraulic Modeling	77 days	100%	Tue 4/23/24	Wed 7/10/24	3SS+12 days
46	As Soon As Possible	☑	C. Impact and Mitigation Analysis	91 days	100%	Tue 5/21/24	Wed 8/21/24	4SS+28 days
47	As Soon As Possible	☑	E. Deliverables	91 days	100%	Tue 5/21/24	Wed 8/21/24	4SS+28 days
48	As Soon As Possible	☑	Preliminary Drainage & Water Quality Report	374 days	55%	Thu 7/11/24	Thu 7/31/25	
49	As Soon As Possible	☑	Internal QC Review	43 days	100%	Thu 7/11/24	Thu 8/22/24	45,46SS+15 days,47SS+
50	As Soon As Possible	☑	Submit Drainage & Water Quality Report	14 days	100%	Fri 8/23/24	Fri 9/6/24	36SS,49
51	As Soon As Possible	☑	GEC/County Review	0 days	100%	Fri 9/6/24	Fri 9/6/24	50
52	As Soon As Possible	☑	Final Drainage & Water Quality Report	15 days	100%	Mon 9/9/24	Mon 9/23/24	51FS+2 days
53	As Soon As Possible	☑	Internal QC Review	46 days	100%	Tue 10/8/24	Fri 11/22/24	52FS+14 days
54	As Soon As Possible	☑	Submit Drainage & Water Quality Report	6 days	100%	Sat 12/21/24	Fri 1/3/25	40SS,53
55	As Soon As Possible	☑	GEC/County Review	0 days	100%	Fri 1/3/25	Fri 1/3/25	54
56	As Soon As Possible	☑	Address Final GEC/County Comments	15 days	100%	Mon 1/6/25	Mon 1/20/25	55FS+2 days
57	As Soon As Possible	☑	Address Final GEC/County Comments	142 days	10%	Wed 3/12/25	Thu 7/31/25	56FS+50 days
58	As Soon As Possible	☑	<b>9. ENVIRONMENTAL SERVICES</b>	<b>111 days</b>	<b>56%</b>	<b>Sun 11/17/24</b>	<b>Tue 3/18/25</b>	
59	As Soon As Possible	☑	A. Data Collection & Field Reconnaissance - NOE Required	51 days	90%	Sun 11/17/24	Fri 1/17/25	5FS+6 days,32FF+7 days
60	As Soon As Possible	☑	B. Draft Environmental Reports	18 days	90%	Tue 1/7/25	Fri 1/24/25	38,59FF+7 days
61	As Soon As Possible	☑	Internal QC Review	2 days	0%	Mon 1/27/25	Tue 1/28/25	60FS+2 days
62	As Soon As Possible	☑	Submit Draft Environmental Reports	0 days	0%	Tue 1/28/25	Tue 1/28/25	61
63	As Soon As Possible	☑	GEC/County Review	14 days	0%	Fri 1/31/25	Thu 2/13/25	62FS+2 days
64	As Soon As Possible	☑	C. Final Environmental Reports	8 days	0%	Fri 2/14/25	Fri 2/21/25	63
65	As Soon As Possible	☑	Internal QC Review	2 days	0%	Mon 2/24/25	Tue 2/25/25	64FS+2 days,36SS
66	As Soon As Possible	☑	Submit Draft Environmental Reports	0 days	0%	Tue 2/25/25	Tue 2/25/25	65
67	As Soon As Possible	☑	GEC/County Review	15 days	0%	Tue 3/4/25	Thu 3/18/25	66FS+6 days
68	As Soon As Possible	☑	<b>10. GEOTECHNICAL SERVICES</b>	<b>404 days</b>	<b>72%</b>	<b>Mon 6/10/24</b>	<b>Thu 7/31/25</b>	
69	As Soon As Possible	☑	A. Borings - NOE Required	32 days	90%	Mon 6/10/24	Fri 1/17/25	5FS+38 days,32FF+7 days
70	As Soon As Possible	☑	B. Draft Reports	33 days	100%	Mon 7/15/24	Fri 8/16/24	69FS+2 days
71	As Soon As Possible	☑	Internal Review	10 days	100%	Mon 8/19/24	Wed 8/28/24	70FS+2 days
72	As Soon As Possible	☑	Submit Draft Geotechnical Reports	0 days	100%	Fri 9/6/24	Fri 9/6/24	37SS,71
73	As Soon As Possible	☑	GEC/County Review	15 days	100%	Mon 9/9/24	Mon 9/23/24	72FS+2 days
74	As Soon As Possible	☑	C. Final Reports	25 days	100%	Sat 1/18/25	Tue 2/11/25	73,69
75	As Soon As Possible	☑	Internal Review	12 days	100%	Fri 2/14/25	Tue 2/25/25	74FS+2 days
76	As Soon As Possible	☑	Submit Draft Geotechnical Reports	0 days	100%	Tue 2/25/25	Tue 2/25/25	41SS,75
77	As Soon As Possible	☑	GEC/County Review	15 days	100%	Tue 3/4/25	Tue 3/18/25	76FS+6 days
78	As Soon As Possible	☑	Complete Borings (NOE required) and Update Report	59 days	10%	Wed 3/19/25	Fri 5/16/25	77
79	As Soon As Possible	☑	WA #1 Complete	0 days	0%	Thu 7/31/25	Thu 7/31/25	22FF,23FF,25FF,26FF,5