

**THE COMMISSIONERS COURT OF WILLIAMSON COUNTY TEXAS**

**RESOLUTION ON THE ADJUSTMENT AND CREATION OF NEW VOTING PRECINCTS**

In accordance with Texas Election Code, Sec. 42.006 the Elections Department has reviewed Williamson County's 164 existing Voting Precincts. All Precincts containing more than 5,000 Active Registered Voters are not in compliance. The Commissioners Court is authorized to make changes to precinct boundaries at this time to adjust for current and future growth per Texas Election Code, Sec. 42.031.

NOW, THEREFORE, BE IT ORDERED that, effective January 1, 2026:

Precincts 207, 209, 244, 252, 267, 343, 369, 401, 403, 410, 420, 422, 437, 470 shall be adjusted as described by the meets and bounds listed in Exhibit B; the original meets and bounds are listed in Exhibit A

Precincts 211, 212, 246, 250, 353, 359, 404, 405, 408, 423, 438, 469 shall be created as described by the meets and bounds listed in Exhibit C

These changes are shown graphically in Exhibit D.

Adopted on this \_\_\_\_\_ day of April 2025.

---

Steven Snell, County Judge

---

Terry Cook, Commissioner, Precinct 1

---

Cynthia Long, Commissioner, Precinct 2

---

Valerie Covey, Commissioner, Precinct 3

---

Russ Boles, Commissioner, Precinct 4

ATTEST:

---

Williamson County Clerk



# **Exhibit A**

## **Original Precincts**

### Election Precinct No. 207

Located within Commissioner, Constable, and Justice of the Peace Precinct 2 bounded by and including 81 US 2020 Census Blocks: Voting Precinct 209 (which abuts to VP 207) was near the active registered voting threshold and VP 207 had enough planned growth that a portion of it was combined with a portion of VP 209 to create the new VP 212 with the remainder staying VP 207. The following are the original census blocks.

484910202081058, 484910202081019, 484910202081038, 484910202081013, 484910202081018, 484910202081017, 484910202081005, 484910202081014, 484910202081036, 484910202081021, 484910202051001, 484910202081035, 484910202081034, 484910202081037, 484910202081060, 484910202081039, 484910202081044, 484910202051005, 484910202081047, 484910202081056, 484910202071002, 484910202051006, 484910202081028, 484910202073001, 484910202081053, 484910202081055, 484910202081059, 484910202051007, 484910202081024, 484910202081043, 484910202073007, 484910202081046, 484910202081050, 484910202081040, 484910202073003, 484910202073004, 484910202073005, 484910202081061, 484910202081016, 484910202051003, 484910202081000, 484910202073006, 484910202081051, 484910202081020, 484910202081011, 484910202081030, 484910202081003, 484910202071000, 484910202051008, 484910202081022, 484910202081026, 484910202081048, 484910202081012, 484910202081007, 484910202081008, 484910202081029, 484910202081042, 484910202081009, 484910202081010, 484910202081032, 484910202081023, 484910202081033, 484910202081041, 484910202081031, 484910202051004, 484910202081057, 484910202071001, 484910202073000, 484910202081001, 484910202081006, 484910202081002, 484910202081015, 484910202081004, 484910202081027, 484910202081052, 484910202073002, 484910202081049, 484910202081025, 484910202081054, 484910202081045, 484910203301000

#### Election Precinct No. 209

Located within Commissioner, Constable, and Justice of the Peace Precinct 2 bounded by and including 52 US 2020 Census Blocks: This Voting Precinct was near the active registered voting threshold and a portion of it was combined with a portion of VP 207 to create the new VP 212 with the remainder staying VP 209. The following are the original census blocks.

484910202071003, 484910203301053, 484910202071027, 484910202071011, 484910202071016, 484910202072011, 484910202071009, 484910202071022, 484910202071008, 484910202071012, 484910202071018, 484910202071015, 484910202071017, 484910202071021, 484910202072014, 484910202072009, 484910202071019, 484910202071013, 484910202071010, 484910203301054, 484910202071005, 484910202072007, 484910202071026, 484910202072006, 484910202072001, 484910202072008, 484910202071024, 484910202081063, 484910202072015, 484910203301035, 484910202071020, 484910202072010, 484910202072012, 484910202072004, 484910202072002, 484910202071023, 484910202071006, 484910202071007, 484910202072003, 484910202072005, 484910202072013, 484910202081062, 484910202071004, 484910202072000, 484910202071014, 484910202071025, 484910203301003, 484910203301004, 484910203301002, 484910203301033, 484910203301001, 484910203301006

#### Election Precinct No. 244

Located within Commissioner, Constable, and Justice of the Peace Precinct 2 bounded by and including 31 US 2020 Census Blocks: This Voting Precinct was over the active registered voting threshold and was split to create the new VP 246 and the remainder stayed VP 244. The following are the original census blocks.

484910201203001, 484910201203010, 484910201201034, 484910201201035, 484910201203002, 484910201202009, 484910201203012, 484910201202003, 484910201202004, 484910201202010, 484910201203004, 484910201203008, 484910201202011, 484910201202006, 484910201202007, 484910201203014, 484910201202012, 484910201203011, 484910201203003, 484910201203007, 484910201201036, 484910201203013, 484910201202005, 484910201203006, 484910201202008, 484910201203009, 484910201203000, 484910201203005, 484910201202013, 484910201202002, 484910201203015

## Election Precinct No. 252

Located within Commissioner, Constable, and Justice of the Peace Precinct 2 bounded by and including 115 US 2020 Census Blocks: This Voting Precinct was near the active registered voting threshold and had enough planned growth that it was split to create the new VP 250 and the remainder stayed 252. The following are the original census blocks.

484910203401001, 484910201242018, 484910203101003, 484910203194009, 484910201243032, 484910203401019, 484910203401007, 484910203391004, 484910203391005, 484910203401005, 484910203513000, 484910206043037, 484910201243048, 484910203101005, 484910203194026, 484910203194002, 484910203194016, 484910203194021, 484910203391011, 484910203292091, 484910203401004, 484910201243049, 484910201243028, 484910203194008, 484910203194003, 484910203194028, 484910203194014, 484910203194004, 484910203194015, 484910203194027, 484910201243025, 484910201242017, 484910203194029, 484910203101004, 484910203292092, 484910203292097, 484910203401049, 484910203194022, 484910203101009, 484910201243014, 484910203194000, 484910203194024, 484910203194017, 484910201243029, 484910203194019, 484910203194006, 484910203401048, 484910203391013, 484910203391010, 484910203391012, 484910203292090, 484910203401010, 484910203391007, 484910203401000, 484910203194005, 484910203194011, 484910203194010, 484910203194020, 484910203194025, 484910203292098, 484910203292000, 484910203401013, 484910203391008, 484910203401008, 484910201242015, 484910201243027, 484910203101010, 484910203194018, 484910203194013, 484910203194023, 484910203101008, 484910203401055, 484910203401051, 484910203401011, 484910203391001, 484910203401012, 484910201242016, 484910201243047, 484910201243031, 484910203101001, 484910201243026, 484910201243024, 484910201242023, 484910203194012, 484910201242022, 484910203292089, 484910203292088, 484910203391009, 484910203292001, 484910203401053, 484910203401002, 484910203401009, 484910201242014, 484910203194001, 484910201243050, 484910201243023, 484910203401014, 484910203401054, 484910203401056, 484910203401047, 484910203513001, 484910201242013, 484910203101006, 484910203101007, 484910203194007, 484910201243042, 484910201242021, 484910203101002, 484910203391003, 484910203391000, 484910203401046, 484910203391006, 484910203292096, 484910201242012, 484910203292002

### Election Precinct No. 267

Located within Commissioner, Constable, and Justice of the Peace Precinct 2 bounded by and including 76 US 2020 Census Blocks: This Voting Precinct was over the active registered voting threshold and was split to create the new VP 211 and the remainder stayed VP 267. The following are the original census blocks.

484910203292094, 484910203401020, 484910203401018, 484910203292095, 484910203401017, 484910203401003, 484910203292112, 484910203292074, 484910203292012, 484910203292017, 484910203292104, 484910203292085, 484910203292102, 484910203292084, 484910203292079, 484910203292099, 484910203292109, 484910203292081, 484910203292076, 484910203292083, 484910203292138, 484910203292141, 484910203292078, 484910203401022, 484910203292100, 484910203292075, 484910203401027, 484910203292082, 484910203292013, 484910203292011, 484910203292008, 484910203292086, 484910203292014, 484910203292111, 484910203292108, 484910203292106, 484910203292009, 484910203292103, 484910203292093, 484910203292019, 484910203401034, 484910203401016, 484910203292080, 484910203292004, 484910203292006, 484910203292003, 484910203292140, 484910203292071, 484910203292073, 484910203292101, 484910203292015, 484910203292007, 484910203292110, 484910203292107, 484910203401032, 484910203401006, 484910203401021, 484910203292010, 484910203292067, 484910203292020, 484910203292114, 484910203401038, 484910203292113, 484910203292068, 484910203292016, 484910203401033, 484910203292072, 484910203292070, 484910203292087, 484910203401015, 484910203292069, 484910203292130, 484910203292105, 484910203292018, 484910203292077, 484910203292005

### Election Precinct No. 343

Located within Commissioner, Constable, and Justice of the Peace Precinct 3 bounded by and including 73 US 2020 Census Blocks: This Voting Precinct was over the active registered voting threshold and was split to create the new VP 353 and the remainder stayed VP 343. The following are the original census blocks.

484910201233002, 484910206041027, 484910206041009, 484910206041051, 484910206041017, 484910201231005, 484910201231002, 484910201231011, 484910201231025, 484910206041024, 484910206041029, 484910206041049, 484910206041018, 484910206041028, 484910206041008, 484910201231008, 484910201231000, 484910201232003, 484910201232001, 484910201231023, 484910206041023, 484910206041010, 484910206041005, 484910206041004, 484910206041050, 484910201231014, 484910201231018, 484910201231013, 484910201231007, 484910201231012, 484910201231017, 484910201231015, 484910201231009, 484910201231019, 484910201231006, 484910201231010, 484910201231004, 484910201233001, 484910206041021, 484910206041020, 484910206041007, 484910206041006, 484910201231021, 484910201231022, 484910201231003, 484910201232006, 484910201233003, 484910201233005, 484910201232007, 484910201231024, 484910201233004, 484910201232002, 484910206041022, 484910206041019, 484910206041003, 484910206041002, 484910201231016, 484910201232004, 484910201232008, 484910206041011, 484910206041001, 484910206041026, 484910206041014, 484910201242011, 484910206041016, 484910206041013, 484910201231001, 484910201232000, 484910201241000, 484910201242010, 484910201232005, 484910206041025, 484910206041015

### Election Precinct No. 369

Located within Commissioner, Constable, and Justice of the Peace Precinct 3 bounded by and including 80 US 2020 Census Blocks: This Voting Precinct was over the active registered voting threshold and was split to create the new VP 359 and the remainder stayed VP 369. The following are the original census blocks.

484910214053000, 484910214061039, 484910214072025, 484910214072021, 484910214072033, 484910214061001, 484910214053025, 484910214053014, 484910214072020, 484910214072037, 484910214072023, 484910214072041, 484910214072043, 484910214072039, 484910214072044, 484910214053001, 484910214053026, 484910214053024, 484910214053016, 484910214053021, 484910214072038, 484910214072029, 484910214072031, 484910214072032, 484910214072030, 484910214053012, 484910214053002, 484910214053008, 484910214053003, 484910214053011, 484910214053013, 484910214053020, 484910214053018, 484910214053010, 484910214072012, 484910214072015, 484910214072013, 484910214072042, 484910214072035, 484910206041047, 484910214053017, 484910214053027, 484910214053006, 484910214053015, 484910214053005, 484910214053007, 484910214053004, 484910214072049, 484910214072014, 484910214072047, 484910214072046, 484910214072016, 484910214072017, 484910214072045, 484910214072040, 484910214053022, 484910214072027, 484910214072024, 484910214072026, 484910214061005, 484910214061007, 484910214061045, 484910214061038, 484910214053019, 484910214072048, 484910206041046, 484910214061020, 484910214061003, 484910214061006, 484910214053023, 484910214061004, 484910214061042, 484910214053009, 484910214072028, 484910214061000, 484910214061033, 484910214061043, 484910214061040, 484910214072034, 484910214072011

### Election Precinct No. 401

Located within Commissioner, Constable, and Justice of the Peace Precinct 4 bounded by and including 71 US 2020 Census Blocks: This Voting Precinct was over the active registered voting threshold and was split to create the new VP 404 and the remainder stayed VP 401. The following are the original census blocks.

484910208162010, 484910208111004, 484910208101001, 484910208162002, 484910208103029, 484910208102005, 484910208102004, 484910208103025, 484910208111012, 484910208111008, 484910208111021, 484910208103026, 484910208103009, 484910208103028, 484910208111020, 484910208111019, 484910208162009, 484910208162011, 484910208162012, 484910208162014, 484910208103003, 484910208103030, 484910208111010, 484910208111003, 484910208111011, 484910208111015, 484910208111014, 484910208103012, 484910208162022, 484910208111009, 484910208102006, 484910208103005, 484910208111007, 484910208162013, 484910208103021, 484910208103008, 484910208103022, 484910208162015, 484910208102001, 484910208162006, 484910208111002, 484910208103024, 484910208111013, 484910208162008, 484910208111016, 484910208111017, 484910208103010, 484910208103023, 484910208162000, 484910208111005, 484910208103007, 484910208103002, 484910208103013, 484910208102002, 484910208163000, 484910208111000, 484910208103011, 484910208103004, 484910208162007, 484910208101000, 484910208102000, 484910208102007, 484910208103001, 484910208111001, 484910208111006, 484910208102003, 484910208103006, 484910208103020, 484910208162001, 484910208172053, 484910208162023

### Election Precinct No. 403

Located within Commissioner, Constable, and Justice of the Peace Precinct 4 bounded by and including 61 US 2020 Census Blocks: Voting Precinct 420 (which abuts to VP 403) was near the active registered voting threshold and VP 403 had enough voters and planned growth that a portion of it was combined with a portion of VP 420 to create the new VP 405 with the remainder staying 403. The following are the original census blocks.

484910208191018, 484910208131026, 484910208132063, 484910208132052, 484910208132057, 484910208131028, 484910208132066, 484910208131053, 484910208132056, 484910208132047, 484910208131034, 484910208131020, 484910208131035, 484910208131021, 484910208132055, 484910208131052, 484910208132071, 484910208131024, 484910208191010, 484910208132067, 484910208132064, 484910208131051, 484910208131054, 484910208131055, 484910208132045, 484910208132050, 484910208132054, 484910208191017, 484910208132037, 484910208132078, 484910208132044, 484910208132070, 484910208132038, 484910208132048, 484910208132051, 484910208131022, 484910208132058, 484910208132040, 484910208132068, 484910208131023, 484910208132061, 484910208132065, 484910208132081, 484910208132062, 484910208132059, 484910208132069, 484910208191011, 484910208132049, 484910208132039, 484910208132036, 484910208132060, 484910208132046, 484910208132024, 484910208131025, 484910208132080, 484910208132053, 484910208132042, 484910208191009, 484910208131019, 484910208132033, 484910208132073

### Election Precinct No. 410

Located within Commissioner, Constable, and Justice of the Peace Precinct 4 bounded by and including 61 US 2020 Census Blocks: This Voting Precinct was over the active registered voting threshold and was split to create the new VP 408 and the remainder stayed VP 410. The following are the original census blocks.

484910216014006, 484910216013018, 484910216014028, 484910216014016, 484910216014015, 484910216014009, 484910216014022, 484910216013003, 484910216014025, 484910216013007, 484910216013006, 484910216014031, 484910216014032, 484910216014034, 484910216014011, 484910216013009, 484910216014029, 484910216014027, 484910216013004, 484910216013005, 484910216014026, 484910216013011, 484910216013017, 484910216013027, 484910216014008, 484910216014014, 484910216013016, 484910216013029, 484910216013026, 484910216014033, 484910216014013, 484910216013032, 484910216013020, 484910216013033, 484910216013028, 484910216014007, 484910216013012, 484910216014030, 484910216013035, 484910216014010, 484910216013030, 484910216014019, 484910216014012, 484910216013034, 484910216014005, 484910216013010, 484910216014017, 484910216013001, 484910216014024, 484910216013025, 484910216014020, 484910216014018, 484910216013008, 484910216013019, 484910216014021, 484910216013013, 484910216013015, 484910216011021, 484910216013000, 484910216013002, 484910216014023

## Election Precinct No. 420

Located within Commissioner, Constable, and Justice of the Peace Precinct 4 bounded by and including 94 US 2020 Census Blocks: This Voting Precinct was near the active registered voting threshold and a portion of it was combined with a portion of VP 403 to create the new VP 405 with the remainder staying VP 420. The following are the original census blocks.

484910208132019, 484910208122026, 484910208123013, 484910208123014, 484910208172015, 484910208131061, 484910208122024, 484910208131045, 484910208131011, 484910208131039, 484910208131050, 484910208131056, 484910208131001, 484910208131040, 484910208131014, 484910208131048, 484910208131049, 484910208131057, 484910208131031, 484910208131030, 484910208172029, 484910208131037, 484910208131047, 484910208131058, 484910208131059, 484910208131027, 484910208122025, 484910208131003, 484910208122002, 484910208131038, 484910208131029, 484910208172020, 484910208123016, 484910208131033, 484910208131036, 484910208131046, 484910208122013, 484910208131032, 484910208122009, 484910208122007, 484910208131012, 484910208122015, 484910208122018, 484910208122019, 484910208122020, 484910208122014, 484910208122017, 484910208122004, 484910208122012, 484910208122005, 484910208122000, 484910208122022, 484910208122021, 484910208122006, 484910208122001, 484910208131042, 484910208172022, 484910208122016, 484910208122008, 484910208122010, 484910208122023, 484910208122011, 484910208131060, 484910208131018, 484910208131013, 484910208131004, 484910208131015, 484910208131016, 484910208172012, 484910208131006, 484910208131009, 484910208172013, 484910208123011, 484910208172021, 484910208131041, 484910208131007, 484910208172018, 484910208172017, 484910208172023, 484910208172019, 484910208172001, 484910208131017, 484910208131010, 484910208172027, 484910208172014, 484910208131043, 484910208172024, 484910208131008, 484910208131044, 484910208172016, 484910208122003, 484910208131005, 484910208123020, 484910208172026

## Election Precinct No. 422

Located within Commissioner, Constable, and Justice of the Peace Precinct 4 bounded by and including 76 US 2020 Census Blocks: This Voting Precinct was near the active registered voting threshold and had enough planned growth that it was split to create the new VP 423 and the remainder stayed 422. The following are the original census blocks.

484910208172035, 484910208162005, 484910208162004, 484910208171016, 484910208172032, 484910208172034, 484910208172033, 484910208172030, 484910208182015, 484910208171017, 484910208172047, 484910208171018, 484910208171021, 484910208171004, 484910208172028, 484910208171007, 484910208182002, 484910208182001, 484910208172038, 484910208172044, 484910208171008, 484910208171019, 484910208171020, 484910208172048, 484910208182012, 484910208182013, 484910208172052, 484910208172036, 484910208182011, 484910208121022, 484910208171009, 484910208171010, 484910208121023, 484910208171005, 484910208172011, 484910208171013, 484910208172045, 484910208182023, 484910208172043, 484910208172051, 484910208172046, 484910208172008, 484910208172007, 484910208171011, 484910208171014, 484910208121024, 484910208171012, 484910208121019, 484910208172050, 484910208172031, 484910208172040, 484910208172005, 484910208172009, 484910208121017, 484910208121020, 484910208172004, 484910208121018, 484910208172039, 484910208172041, 484910208172037, 484910208182014, 484910208172049, 484910208171006, 484910208171015, 484910208171002, 484910208172010, 484910208171003, 484910208121021, 484910208171000, 484910208171001, 484910208172042, 484910208172006, 484910208172025, 484910208182000, 484910208182010, 484910208162003

### Election Precinct No. 437

Located within Commissioner, Constable, and Justice of the Peace Precinct 4 bounded by and including 90 US 2020 Census Blocks: This Voting Precinct was over the active registered voting threshold and was split to create the new VP 438 and the remainder stayed VP 437. The following are the original census blocks.

484910215102001, 484910215093013, 484910215092028, 484910215092027, 484910215092033, 484910215091014, 484910215091020, 484910215091024, 484910215103013, 484910215091021, 484910215091025, 484910215091009, 484910215091029, 484910215104018, 484910215093005, 484910215091015, 484910215104020, 484910215091007, 484910215093004, 484910215092007, 484910215101006, 484910215091008, 484910215104003, 484910215093011, 484910215091028, 484910215103015, 484910215093008, 484910215093009, 484910215091005, 484910215093002, 484910215091019, 484910215092032, 484910215092006, 484910215093012, 484910215093001, 484910215104001, 484910215102004, 484910215091012, 484910215104014, 484910215092005, 484910215091004, 484910215091003, 484910215104013, 484910215104017, 484910215092021, 484910215091017, 484910215091001, 484910215093007, 484910215093003, 484910215102005, 484910215093010, 484910215092022, 484910215104021, 484910215104005, 484910215104012, 484910215091006, 484910215091000, 484910215092030, 484910215104009, 484910215104019, 484910215092003, 484910215102003, 484910215091023, 484910215104016, 484910215104004, 484910215104008, 484910215092026, 484910215091013, 484910215091011, 484910215091018, 484910215091002, 484910215104011, 484910215091027, 484910215102002, 484910215104002, 484910215092029, 484910215104007, 484910215092020, 484910215091022, 484910215091010, 484910215092004, 484910215104015, 484910215093006, 484910215091016, 484910215092031, 484910215104010, 484910215104006, 484910215104000, 484910215093000, 484910215091026

### Election Precinct No. 470

Located within Commissioner, Constable, and Justice of the Peace Precinct 4 bounded by and including 92 US 2020 Census Blocks: This Voting Precinct was near the active registered voting threshold and had enough planned growth that it was split to create the new VP 469 and the remainder stayed 470. The following are the original census blocks.

484910208221040, 484910208221030, 484910208221031, 484910214041002, 484910214041001, 484910214042015, 484910208221038, 484910208221027, 484910208221014, 484910208221029, 484910208221025, 484910208211014, 484910208211008, 484910208221039, 484910214042002, 484910214042027, 484910214042001, 484910214041016, 484910214042009, 484910208221008, 484910208221010, 484910208211026, 484910208211006, 484910208221007, 484910208211065, 484910208211005, 484910208211029, 484910214042014, 484910214042022, 484910214042008, 484910214041017, 484910214042007, 484910214042013, 484910214042018, 484910214042005, 484910214042006, 484910208221009, 484910208221016, 484910208211004, 484910208211009, 484910208221033, 484910208211027, 484910208211011, 484910208211007, 484910214042023, 484910214042020, 484910214041000, 484910214042024, 484910214042010, 484910214042019, 484910208221037, 484910208211028, 484910208211003, 484910208211010, 484910208211064, 484910208211012, 484910214042025, 484910214042021, 484910214041005, 484910214042026, 484910214041014, 484910208221036, 484910208211013, 484910214042012, 484910214042016, 484910208221035, 484910208221058, 484910208221011, 484910208221020, 484910208221059, 484910208211000, 484910214041013, 484910214042011, 484910214041015, 484910214042017, 484910201132026, 484910201132025, 484910208221028, 484910208221012, 484910208211016, 484910208211002, 484910208211025, 484910208221015, 484910208221017, 484910214042000, 484910214042004, 484910208221034, 484910208221013, 484910208221032, 484910208211001, 484910208221021, 484910208221006



## **Exhibit B**

### **Adjusted Precincts**

#### **Election Precinct No. 207**

Located within Commissioner, Constable, and Justice of the Peace Precinct 2 bounded by and including 60 US 2020 Census Blocks: Voting Precinct 209 (which abuts to VP 207) was near the active registered voting threshold and VP 207 had enough planned growth that a portion of it was combined with a portion of VP 209 to create the new VP 212 with the remainder staying VP 207

484910202081033, 484910202081019, 484910202081038, 484910202081013, 484910202081018, 484910202081017, 484910202081005, 484910202081014, 484910202081036, 484910202081021, 484910202051001, 484910202081035, 484910202081034, 484910202081037, 484910202081039, 484910202051005, 484910202071002, 484910202051006, 484910202081028, 484910202073001, 484910202051007, 484910202081024, 484910202073007, 484910202081050, 484910202081040, 484910202073003, 484910202073004, 484910202073005, 484910202081016, 484910202051003, 484910202073006, 484910202081051, 484910202081020, 484910202081011, 484910202081030, 484910202081003, 484910202071000, 484910202051008, 484910202081022, 484910202081012, 484910202081007, 484910202081008, 484910202081029, 484910202081009, 484910202081010, 484910202081032, 484910202081023, 484910202081000, 484910202081031, 484910202051004, 484910202071001, 484910202073000, 484910202081001, 484910202081006, 484910202081002, 484910202081015, 484910202081004, 484910202081052, 484910202073002, 484910202081049

#### **Election Precinct No. 209**

Located within Commissioner, Constable, and Justice of the Peace Precinct 2 bounded by and including 41 US 2020 Census Blocks: This Voting Precinct was near the active registered voting threshold and a portion of it was combined with a portion of VP 207 to create the new VP 212 with the remainder staying VP 209

484910202071003, 484910202071027, 484910202071011, 484910202071016, 484910202072011, 484910202071009, 484910202071022, 484910202071008, 484910202071012, 484910202071018, 484910202071015, 484910202071017, 484910202071021, 484910202072014, 484910202072009, 484910202071019, 484910202071013, 484910202071010, 484910202071005, 484910202072007, 484910202071026, 484910202072006, 484910202072001, 484910202072008, 484910202071024, 484910202072015, 484910202071020, 484910202072010, 484910202072012, 484910202072004, 484910202072002, 484910202071023, 484910202071006, 484910202071007, 484910202072003, 484910202072005, 484910202072013, 484910202071004, 484910202072000, 484910202071014, 484910202071025

#### Election Precinct No. 244

Located within Commissioner, Constable, and Justice of the Peace Precinct 2 bounded by and including 12 US 2020 Census Blocks in their entirety and 1 US 2020 Census Block in part as described below: This Voting Precinct was over the active registered voting threshold and was split to create the new VP 246 and the remainder stayed VP 244

484910201202002, 484910201202003, 484910201202004, 484910201202010, 484910201202011, 484910201202006, 484910201202007, 484910201202012, 484910201202005, 484910201202008, 484910201202009, 484910201202013

And the northernmost portion of 2020 US Census Block 484910201203001 more completely described as:

Starting at the Northern intersection of 2020 US Census Block 484910201203001 and Ronald W. Regan Boulevard

THENCE continuing North East along the northernmost boundary of 2020 US Census Block 484910201203001 to where it intersects with 2020 US Census Block 484910201203000

THENCE continuing South, South East to where it intersects with the northernmost boundary of Williamson Co MUD #23

THENCE continuing South West along the northernmost boundary of Williamson Co MUD #23 to where it intersects with 2020 US Census Block 484910201203010

THENCE continuing South along the western boundary of 2020 US Census Block 484910201203010 to where it intersects with 2020 US Census Block 484910201203001

THENCE continuing West along the boundary of 2020 US Census Block 484910201203001 to where it intersects with Ronald W. Regan Boulevard

THENCE continuing North to the POINT OF BEGINNING

### Election Precinct No. 252

Located within Commissioner, Constable, and Justice of the Peace Precinct 2 bounded by and including 56 US 2020 Census Blocks: This Voting Precinct was near the active registered voting threshold and had enough planned growth that it was split to create the new VP 250 and the remainder stayed 252

484910203194007, 484910203194009, 484910203391004, 484910203391005, 484910203513000, 484910206043037, 484910203101005, 484910203194026, 484910203194002, 484910203194016, 484910203194021, 484910203391011, 484910203194008, 484910203194003, 484910203194028, 484910203194014, 484910203194004, 484910203194015, 484910203194027, 484910203194029, 484910203101004, 484910203194022, 484910203101009, 484910203194000, 484910203194024, 484910203194017, 484910203194019, 484910203194006, 484910203391013, 484910203391010, 484910203391012, 484910203391007, 484910203194005, 484910203194011, 484910203194010, 484910203194020, 484910203194025, 484910203391008, 484910203101010, 484910203194018, 484910203194013, 484910203194023, 484910203101008, 484910203391001, 484910203101001, 484910203194012, 484910203391009, 484910203194001, 484910203513001, 484910203101006, 484910203101007, 484910203101003, 484910203101002, 484910203391003, 484910203391000, 484910203391006

### Election Precinct No. 267

Located within Commissioner, Constable, and Justice of the Peace Precinct 2 bounded by and including 50 US 2020 Census Blocks: This Voting Precinct was over the active registered voting threshold and was split to create the new VP 211 and the remainder stayed VP 267

484910203292094, 484910203401020, 484910203401018, 484910203292095, 484910203401017, 484910203401003, 484910203292112, 484910203292074, 484910203292104, 484910203292085, 484910203292102, 484910203292084, 484910203292079, 484910203292099, 484910203292109, 484910203292081, 484910203292076, 484910203292083, 484910203292078, 484910203401022, 484910203292100, 484910203292075, 484910203401027, 484910203292082, 484910203292086, 484910203292108, 484910203292106, 484910203292103, 484910203292093, 484910203401034, 484910203401016, 484910203292080, 484910203292004, 484910203292003, 484910203292073, 484910203292101, 484910203292110, 484910203292107, 484910203401032, 484910203401006, 484910203401021, 484910203292114, 484910203401038, 484910203292113, 484910203401033, 484910203292087, 484910203401015, 484910203292130, 484910203292105, 484910203292077

### Election Precinct No. 343

Located within Commissioner, Constable, and Justice of the Peace Precinct 3 bounded by and including 66 US 2020 Census Blocks: This Voting Precinct was over the active registered voting threshold and was split to create the new VP 353 and the remainder stayed VP 343

484910201242010, 484910206041027, 484910206041009, 484910206041051, 484910206041017, 484910201231005, 484910201231002, 484910201231011, 484910201231025, 484910206041024, 484910206041029, 484910206041049, 484910206041018, 484910206041028, 484910206041008, 484910201231008, 484910201232003, 484910201232001, 484910201231023, 484910206041023, 484910206041010, 484910206041005, 484910206041004, 484910206041050, 484910201231014, 484910201231018, 484910201231013, 484910201231007, 484910201231012, 484910201231017, 484910201231015, 484910201231009, 484910201231019, 484910201231006, 484910201231010, 484910201231004, 484910206041021, 484910206041020, 484910206041007, 484910206041006, 484910201231021, 484910201231022, 484910201231003, 484910201232006, 484910201232007, 484910201231024, 484910201232002, 484910206041022, 484910206041019, 484910206041003, 484910206041002, 484910201231016, 484910201232004, 484910201232008, 484910206041011, 484910206041001, 484910206041026, 484910206041014, 484910201242011, 484910206041016, 484910206041013, 484910201231001, 484910201232000, 484910201232005, 484910206041025, 484910206041015

### Election Precinct No. 369

Located within Commissioner, Constable, and Justice of the Peace Precinct 3 bounded by and including 52 US 2020 Census Blocks: This Voting Precinct was over the active registered voting threshold and was split to create the new VP 359 and the remainder stayed VP 369

484910214061040, 484910214061039, 484910214072025, 484910214072021, 484910214072033, 484910214061001, 484910214072020, 484910214072037, 484910214072023, 484910214072041, 484910214072043, 484910214072039, 484910214072044, 484910214072038, 484910214072029, 484910214072031, 484910214072032, 484910214072030, 484910214072012, 484910214072015, 484910214072013, 484910214072042, 484910214072035, 484910206041047, 484910214072049, 484910214072014, 484910214072047, 484910214072046, 484910214072016, 484910214072017, 484910214072045, 484910214072040, 484910214072027, 484910214072024, 484910214072026, 484910214061005, 484910214061007, 484910214061045, 484910214061038, 484910214072048, 484910206041046, 484910214061020, 484910214061003, 484910214061006, 484910214061004, 484910214061042, 484910214072028, 484910214061000, 484910214061033, 484910214061043, 484910214072034, 484910214072011

### Election Precinct No. 401

Located within Commissioner, Constable, and Justice of the Peace Precinct 4 bounded by and including 34 US 2020 Census Blocks: This Voting Precinct was over the active registered voting threshold and was split to create the new VP 404 and the remainder stayed VP 401

484910208103001, 484910208103029, 484910208102005, 484910208102004, 484910208103025, 484910208103026, 484910208103009, 484910208103028, 484910208103003, 484910208103030, 484910208103012, 484910208102006, 484910208103005, 484910208103021, 484910208103008, 484910208103022, 484910208102001, 484910208103024, 484910208103010, 484910208103023, 484910208103007, 484910208103002, 484910208103013, 484910208102002, 484910208163000, 484910208103011, 484910208103004, 484910208101000, 484910208102000, 484910208102007, 484910208101001, 484910208102003, 484910208103006, 484910208103020

### Election Precinct No. 403

Located within Commissioner, Constable, and Justice of the Peace Precinct 4 bounded by and including 48 US 2020 Census Blocks: Voting Precinct 420 (which abuts to VP 403) was near the active registered voting threshold and VP 403 had enough voters and planned growth that a portion of it was combined with a portion of VP 420 to create the new VP 405 with the remainder staying 403

484910208191018, 484910208131026, 484910208132063, 484910208132057, 484910208131028, 484910208132066, 484910208131053, 484910208132056, 484910208132047, 484910208131034, 484910208131020, 484910208131035, 484910208131021, 484910208132055, 484910208131052, 484910208132071, 484910208131024, 484910208191010, 484910208132067, 484910208132064, 484910208131051, 484910208131054, 484910208131055, 484910208132045, 484910208132054, 484910208191017, 484910208132078, 484910208132044, 484910208132070, 484910208132048, 484910208132051, 484910208131022, 484910208132058, 484910208132068, 484910208131023, 484910208132061, 484910208132065, 484910208132062, 484910208132069, 484910208191011, 484910208132060, 484910208132046, 484910208131025, 484910208132080, 484910208132053, 484910208191009, 484910208131019, 484910208132073

#### Election Precinct No. 410

Located within Commissioner, Constable, and Justice of the Peace Precinct 4 bounded by and including 43 US 2020 Census Blocks: This Voting Precinct was over the active registered voting threshold and was split to create the new VP 408 and the remainder stayed VP 410

484910216013002, 484910216013018, 484910216014028, 484910216014022, 484910216013003, 484910216014025, 484910216013007, 484910216013006, 484910216014031, 484910216014032, 484910216014034, 484910216014029, 484910216014027, 484910216013004, 484910216013005, 484910216014026, 484910216013017, 484910216013027, 484910216013016, 484910216013029, 484910216013026, 484910216014033, 484910216014013, 484910216013020, 484910216013028, 484910216014007, 484910216014030, 484910216013035, 484910216014010, 484910216013030, 484910216014019, 484910216014012, 484910216014017, 484910216013001, 484910216014024, 484910216013025, 484910216014018, 484910216013019, 484910216014021, 484910216013015, 484910216011021, 484910216013000, 484910216014023

#### Election Precinct No. 420

Located within Commissioner, Constable, and Justice of the Peace Precinct 4 bounded by and including 39 US 2020 Census Blocks: This Voting Precinct was near the active registered voting threshold and a portion of it was combined with a portion of VP 403 to create the new VP 405 with the remainder staying VP 420

484910208132019, 484910208122002, 484910208122013, 484910208122009, 484910208122007, 484910208132050, 484910208122015, 484910208122018, 484910208122019, 484910208122020, 484910208122014, 484910208122017, 484910208122004, 484910208122012, 484910208122005, 484910208122000, 484910208132037, 484910208122022, 484910208122021, 484910208122006, 484910208122001, 484910208132038, 484910208122016, 484910208122008, 484910208122010, 484910208122023, 484910208122011, 484910208132040, 484910208132081, 484910208132059, 484910208132049, 484910208132039, 484910208132036, 484910208132024, 484910208122003, 484910208132042, 484910208123020, 484910208132033, 484910208132052

#### Election Precinct No. 422

Located within Commissioner, Constable, and Justice of the Peace Precinct 4 bounded by and including 68 US 2020 Census Blocks: This Voting Precinct was near the active registered voting threshold and had enough planned growth that it was split to create the new VP 423 and the remainder stayed 422

484910208172035, 484910208162005, 484910208162004, 484910208171016, 484910208172032, 484910208172034, 484910208172033, 484910208172030, 484910208182015, 484910208171017, 484910208172047, 484910208171018, 484910208171021, 484910208171004, 484910208172028, 484910208171007, 484910208182002, 484910208182001, 484910208172038, 484910208172044, 484910208171008, 484910208171019, 484910208171020, 484910208172048, 484910208182012, 484910208182013, 484910208172052, 484910208172036, 484910208182011, 484910208171009, 484910208171010, 484910208171005, 484910208172011, 484910208171013, 484910208172045, 484910208182023, 484910208172043, 484910208172051, 484910208172046, 484910208172008, 484910208172007, 484910208171011, 484910208171014, 484910208171012, 484910208172050, 484910208172031, 484910208172040, 484910208172005, 484910208172009, 484910208172004, 484910208172039, 484910208172041, 484910208172037, 484910208182014, 484910208172049, 484910208171006, 484910208171015, 484910208171002, 484910208172010, 484910208171003, 484910208171000, 484910208171001, 484910208172042, 484910208172006, 484910208172025, 484910208182000, 484910208182010, 484910208162003

#### Election Precinct No. 437

Located within Commissioner, Constable, and Justice of the Peace Precinct 4 bounded by and including 59 US 2020 Census Blocks: This Voting Precinct was over the active registered voting threshold and was split to create the new VP 438 and the remainder stayed VP 437

484910215102001, 484910215093013, 484910215092033, 484910215091014, 484910215091020, 484910215091024, 484910215103013, 484910215091021, 484910215091025, 484910215104018, 484910215093005, 484910215091015, 484910215104020, 484910215093004, 484910215101006, 484910215104003, 484910215093011, 484910215103015, 484910215093008, 484910215093009, 484910215093002, 484910215091019, 484910215093012, 484910215093001, 484910215104001, 484910215102004, 484910215104014, 484910215104013, 484910215104017, 484910215091017, 484910215093007, 484910215093003, 484910215102005, 484910215093010, 484910215104021, 484910215104005, 484910215104012, 484910215104009, 484910215104019, 484910215102003, 484910215091023, 484910215104016, 484910215104004, 484910215104008, 484910215091018, 484910215104011, 484910215091027, 484910215102002, 484910215104002, 484910215104007, 484910215091022, 484910215104015, 484910215093006, 484910215091016, 484910215104010, 484910215104006, 484910215104000, 484910215093000, 484910215091026

## Election Precinct No. 470

Located within Commissioner, Constable, and Justice of the Peace Precinct 4 bounded by and including 68 US 2020 Census Blocks: This Voting Precinct was near the active registered voting threshold and had enough planned growth that it was split to create the new VP 469 and the remainder stayed 470

484910208221040, 484910214041001, 484910214042015, 484910208221038, 484910208221027, 484910208221025, 484910208211014, 484910208211008, 484910208221039, 484910214042002, 484910214042027, 484910214042001, 484910214041016, 484910214042009, 484910208211026, 484910208211006, 484910208211065, 484910208211005, 484910208211029, 484910214042014, 484910214042022, 484910214042008, 484910214041017, 484910214042007, 484910214042013, 484910214042018, 484910214042005, 484910214042006, 484910208211004, 484910208211009, 484910208211027, 484910208211011, 484910208211007, 484910214042023, 484910214042020, 484910214041000, 484910214042024, 484910214042010, 484910214042019, 484910208221037, 484910208211028, 484910208211003, 484910208211010, 484910208211064, 484910208211012, 484910214042025, 484910214042021, 484910214041005, 484910214042026, 484910214041014, 484910208221036, 484910208211013, 484910214042012, 484910214042016, 484910208221058, 484910208221059, 484910208211000, 484910214041013, 484910214042011, 484910214041015, 484910214042017, 484910208211016, 484910208211002, 484910208211025, 484910214042000, 484910214042004, 484910214041002, 484910208211001



## **Exhibit C**

### **New Precincts**

#### **Election Precinct No. 211**

Located within Commissioner, Constable, and Justice of the Peace Precinct 2 bounded by and including 26 US 2020 Census Blocks: New VP 211 was created from a portion of VP 267

484910203292069, 484910203292017, 484910203292138, 484910203292141, 484910203292013, 484910203292011, 484910203292008, 484910203292014, 484910203292111, 484910203292009, 484910203292019, 484910203292006, 484910203292140, 484910203292071, 484910203292015, 484910203292007, 484910203292010, 484910203292067, 484910203292020, 484910203292068, 484910203292016, 484910203292072, 484910203292070, 484910203292012, 484910203292018, 484910203292005

#### **Election Precinct No. 212**

Located within Commissioner, Constable, and Justice of the Peace Precinct 2 bounded by and including 32 US 2020 Census Blocks: New VP 212 was created from a portion of VP 209 and 207

484910202081058, 484910203301054, 484910202081060, 484910202081044, 484910202081047, 484910202081056, 484910202081063, 484910203301035, 484910202081053, 484910202081055, 484910202081059, 484910202081043, 484910202081046, 484910202081061, 484910203301053, 484910202081026, 484910202081048, 484910202081062, 484910202081042, 484910202081041, 484910202081057, 484910202081027, 484910202081025, 484910202081054, 484910202081045, 484910203301003, 484910203301004, 484910203301002, 484910203301033, 484910203301001, 484910203301006, 484910203301000

### Election Precinct No. 246

Located within Commissioner, Constable, and Justice of the Peace Precinct 2 bounded by and including 18 US 2020 Census Blocks in their entirety and 1 US 2020 Census Block in part as described below: New VP 246 was created from a portion of VP 244

484910201203010, 484910201201034, 484910201201035, 484910201203002, 484910201203012, 484910201203004, 484910201203008, 484910201203014, 484910201203011, 484910201203003, 484910201203007, 484910201201036, 484910201203013, 484910201203006, 484910201203009, 484910201203000, 484910201203005, 484910201203015

And the southernmost portion of 2020 US Census Block 484910201203001 more completely described as:

Starting at the North East corner of the intersection of State Highway No. 29 and Ronald W. Regan Boulevard

THENCE continuing North, North East bounded by the Western boundary of 2020 Census Blocks 484910201201036, 484910201203009, and 484910201203010

THENCE continuing on the Northern boundary of 2020 Census Block 484910201203010

THENCE continuing South, South West along the boundary of 2020 Census Block 484910201203010 until it intersects with the Northern boundary of Williamson Co MUD #23

THENCE continuing North, North East along the Northern boundary of Williamson Co MUD #23 until it intersects with 2020 Census Block 484910201203000 to include that block in its entirety

THENCE continuing South, South East from the intersection of the Southern boundary of 2020 Census Block 484910201203000 and Crossing Creek Road along Crossing Creek Road until it intersects with State Highway No. 29

THENCE continuing East to the POINT OF BEGINNING

### Election Precinct No. 250

Located within Commissioner, Constable, and Justice of the Peace Precinct 2 bounded by and including 59 US 2020 Census Blocks: New VP 250 was created from a portion of VP 252

484910203401001, 484910201242018, 484910201243032, 484910203401019, 484910203401007, 484910203401005, 484910201243048, 484910203292091, 484910203401004, 484910201243049, 484910201243028, 484910201243025, 484910201242017, 484910203292092, 484910203292097, 484910203401049, 484910201243014, 484910201243029, 484910203401048, 484910203292090, 484910203401010, 484910203401000, 484910203292098, 484910203292000, 484910203401013, 484910203401008, 484910201242015, 484910201243027, 484910203401055, 484910203401051, 484910203401011, 484910203401012, 484910201242016, 484910201243047, 484910201243031, 484910201243026, 484910201243024, 484910201242023, 484910201242022, 484910203292089, 484910203292088, 484910203292001, 484910203401053, 484910203401002, 484910203401009, 484910201242014, 484910201243050, 484910201243023, 484910203401014, 484910203401054, 484910203401056, 484910203401047, 484910201242013, 484910201243042, 484910201242021, 484910203401046, 484910203292096, 484910201242012, 484910203292002

### Election Precinct No. 353

Located within Commissioner, Constable, and Justice of the Peace Precinct 3 bounded by and including 7 US 2020 Census Blocks: New VP 353 was created from a portion of VP 343

484910201233002, 484910201233001, 484910201233003, 484910201233005, 484910201233004, 484910201241000, 484910201231000

### Election Precinct No. 359

Located within Commissioner, Constable, and Justice of the Peace Precinct 3 bounded by and including 28 US 2020 Census Blocks: New VP 359 was created from a portion of VP 369

484910214053000, 484910214053014, 484910214053001, 484910214053026, 484910214053024, 484910214053016, 484910214053021, 484910214053012, 484910214053002, 484910214053008, 484910214053003, 484910214053011, 484910214053013, 484910214053020, 484910214053018, 484910214053010, 484910214053017, 484910214053027, 484910214053006, 484910214053015, 484910214053005, 484910214053007, 484910214053004, 484910214053022, 484910214053019, 484910214053023, 484910214053009, 484910214053025

#### Election Precinct No. 404

Located within Commissioner, Constable, and Justice of the Peace Precinct 4 bounded by and including 37 US 2020 Census Blocks: New VP 404 was created from a portion of VP 401

484910208162010, 484910208111004, 484910208162002, 484910208111012, 484910208111008, 484910208111021, 484910208111020, 484910208111019, 484910208162009, 484910208162011, 484910208162012, 484910208162014, 484910208111010, 484910208111003, 484910208111011, 484910208111015, 484910208111014, 484910208162022, 484910208111009, 484910208111007, 484910208162013, 484910208162015, 484910208162006, 484910208111002, 484910208111013, 484910208162008, 484910208111016, 484910208111017, 484910208162000, 484910208111005, 484910208111000, 484910208162007, 484910208111001, 484910208111006, 484910208162001, 484910208172053, 484910208162023

#### Election Precinct No. 405

Located within Commissioner, Constable, and Justice of the Peace Precinct 4 bounded by and including 68 US 2020 Census Blocks: New VP 405 was created from a portion of VP 403 and 420

484910208131043, 484910208122026, 484910208123013, 484910208123014, 484910208172015, 484910208131061, 484910208122024, 484910208131045, 484910208131011, 484910208131039, 484910208131050, 484910208131056, 484910208131001, 484910208131040, 484910208131014, 484910208131048, 484910208131049, 484910208131057, 484910208131031, 484910208131030, 484910208172029, 484910208131037, 484910208131047, 484910208131058, 484910208131059, 484910208131027, 484910208122025, 484910208131003, 484910208131038, 484910208131029, 484910208172020, 484910208123016, 484910208131033, 484910208131036, 484910208131046, 484910208131032, 484910208131012, 484910208131042, 484910208172022, 484910208131060, 484910208131018, 484910208131013, 484910208131004, 484910208131015, 484910208131016, 484910208172012, 484910208131006, 484910208131009, 484910208172013, 484910208123011, 484910208172021, 484910208131041, 484910208131007, 484910208172018, 484910208172017, 484910208172023, 484910208172019, 484910208172001, 484910208131017, 484910208131010, 484910208172027, 484910208172014, 484910208172026, 484910208172024, 484910208131008, 484910208131044, 484910208172016, 484910208131005

#### Election Precinct No. 408

Located within Commissioner, Constable, and Justice of the Peace Precinct 4 bounded by and including 18 US 2020 Census Blocks: New VP 408 was created from a portion of VP 410

484910216014006, 484910216014015, 484910216014009, 484910216014011, 484910216013009, 484910216013011, 484910216014008, 484910216014014, 484910216013032, 484910216013033, 484910216013012, 484910216013034, 484910216014005, 484910216013010, 484910216014020, 484910216013008, 484910216013013, 484910216014016

#### Election Precinct No. 423

Located within Commissioner, Constable, and Justice of the Peace Precinct 4 bounded by and including 8 US 2020 Census Blocks: New VP 423 was created from a portion of VP 422

484910208121021, 484910208121023, 484910208121024, 484910208121019, 484910208121017, 484910208121020, 484910208121018, 484910208121022

#### Election Precinct No. 438

Located within Commissioner, Constable, and Justice of the Peace Precinct 4 bounded by and including 31 US 2020 Census Blocks: New VP 438 was created from a portion of VP 437

484910215092031, 484910215092027, 484910215091009, 484910215091029, 484910215091007, 484910215092007, 484910215091008, 484910215091028, 484910215091005, 484910215092032, 484910215092006, 484910215091012, 484910215092005, 484910215091004, 484910215091003, 484910215092021, 484910215091001, 484910215092022, 484910215091006, 484910215091000, 484910215092030, 484910215092003, 484910215092026, 484910215091013, 484910215091011, 484910215091002, 484910215092029, 484910215092020, 484910215091010, 484910215092004, 484910215092028

#### Election Precinct No. 469

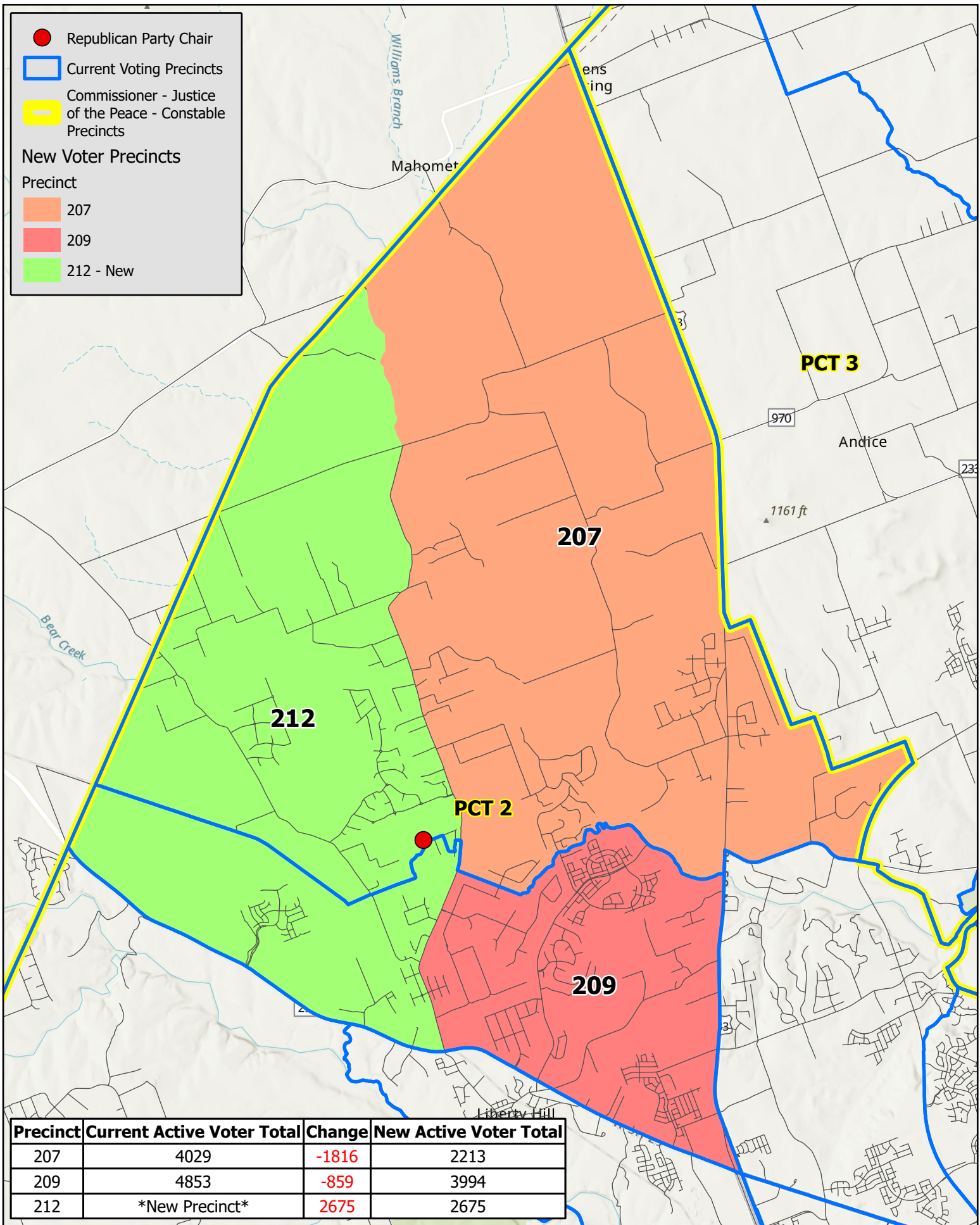
Located within Commissioner, Constable, and Justice of the Peace Precinct 4 bounded by and including 24 US 2020 Census Blocks: New VP 469 was created from a portion of VP 470

484910208221034, 484910208221030, 484910208221031, 484910208221014, 484910208221029, 484910208221008, 484910208221010, 484910208221007, 484910208221009, 484910208221016, 484910208221033, 484910208221035, 484910208221011, 484910208221020, 484910201132026, 484910201132025, 484910208221028, 484910208221012, 484910208221015, 484910208221017, 484910208221013, 484910208221032, 484910208221021, 484910208221006



# **Exhibit D**

**Maps**



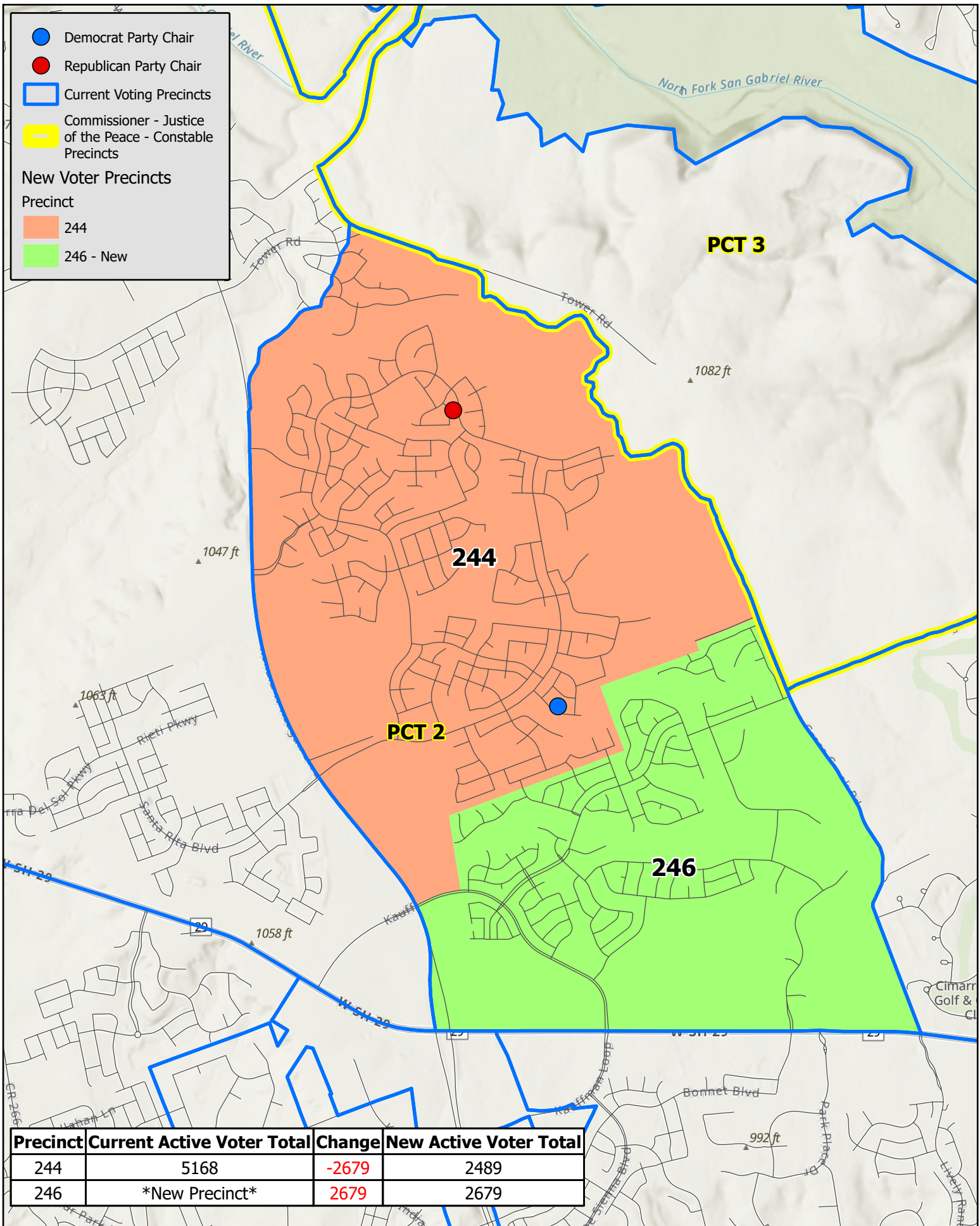
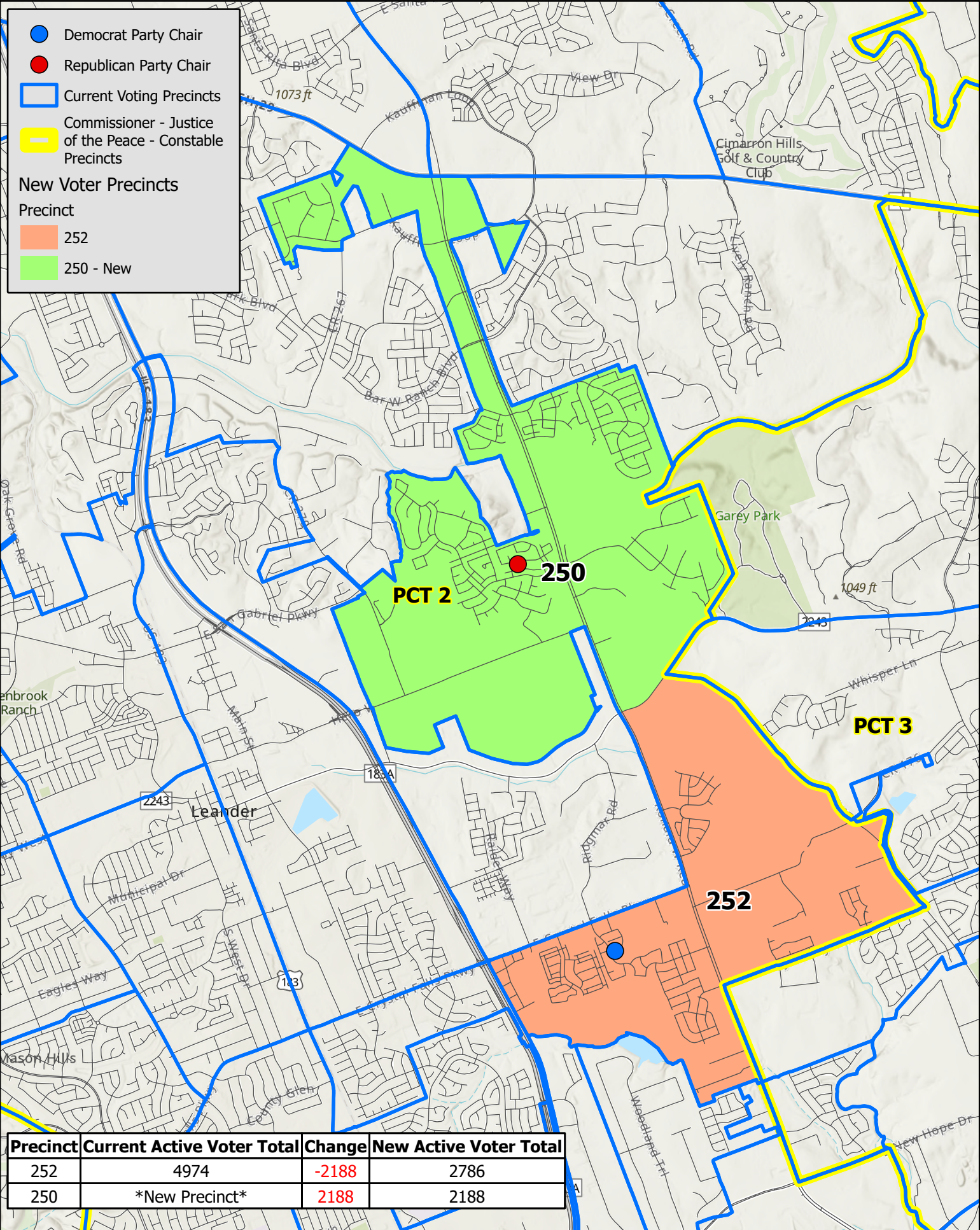
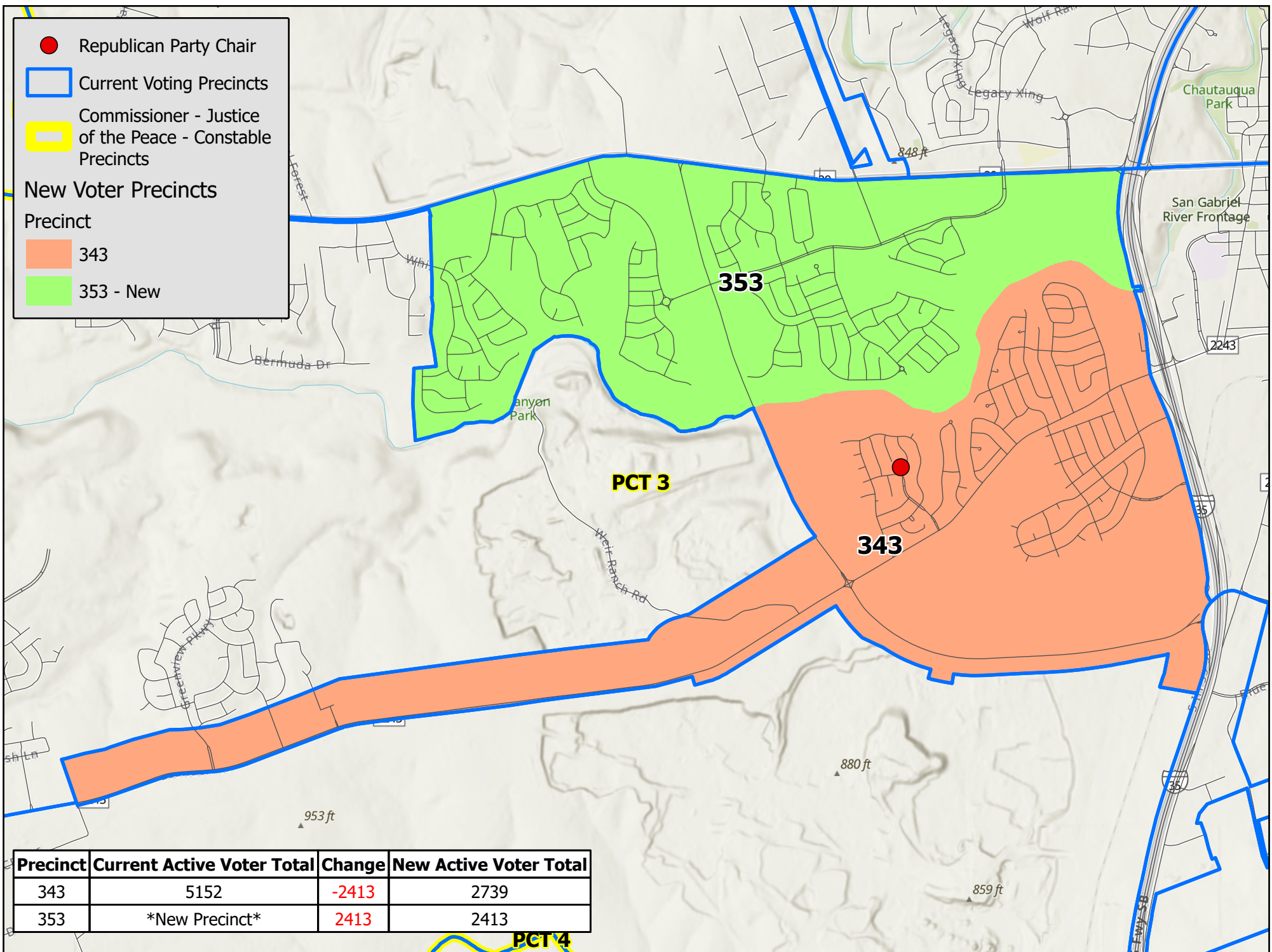


Exhibit D

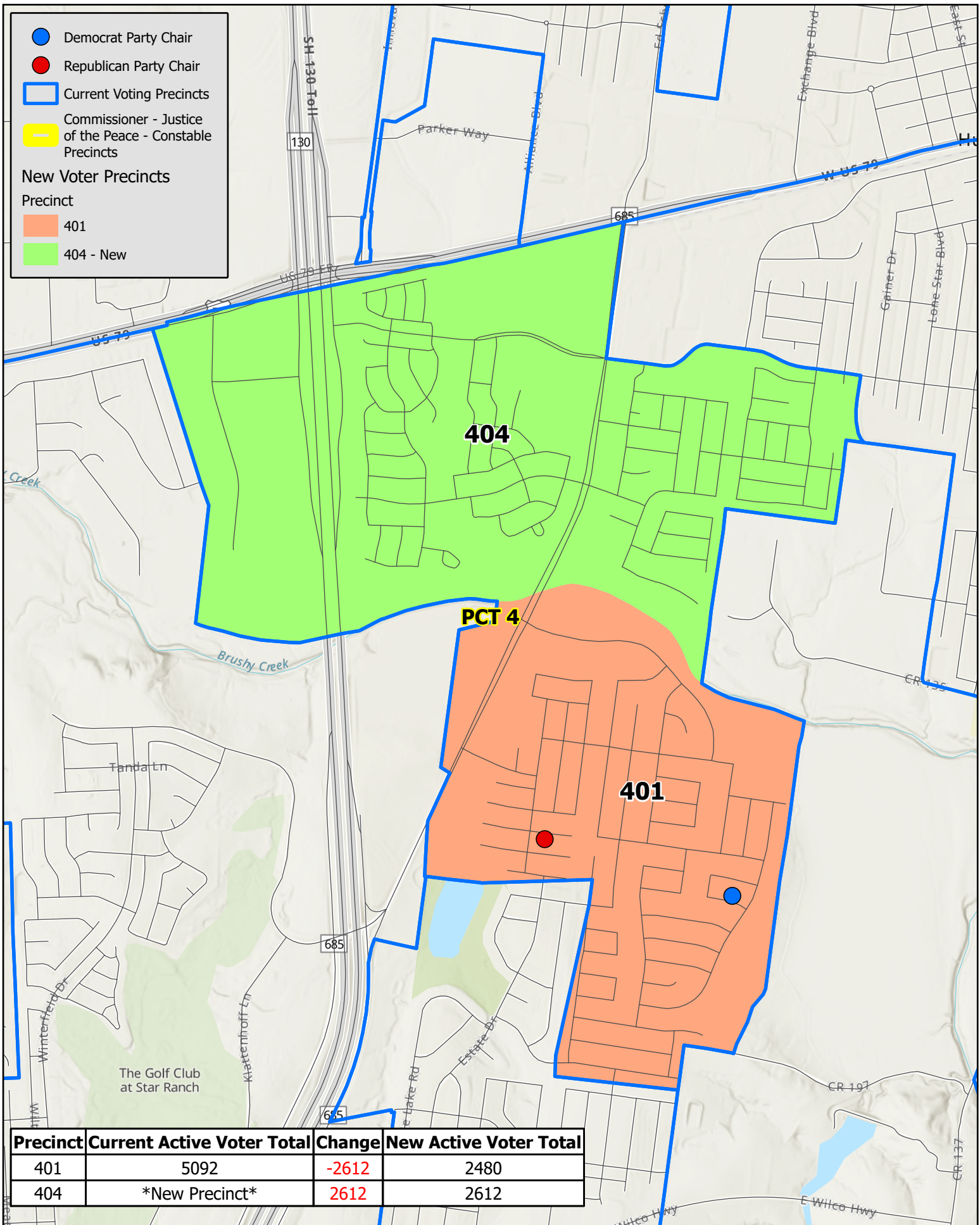
Creation of precinct 246 from precinct 244

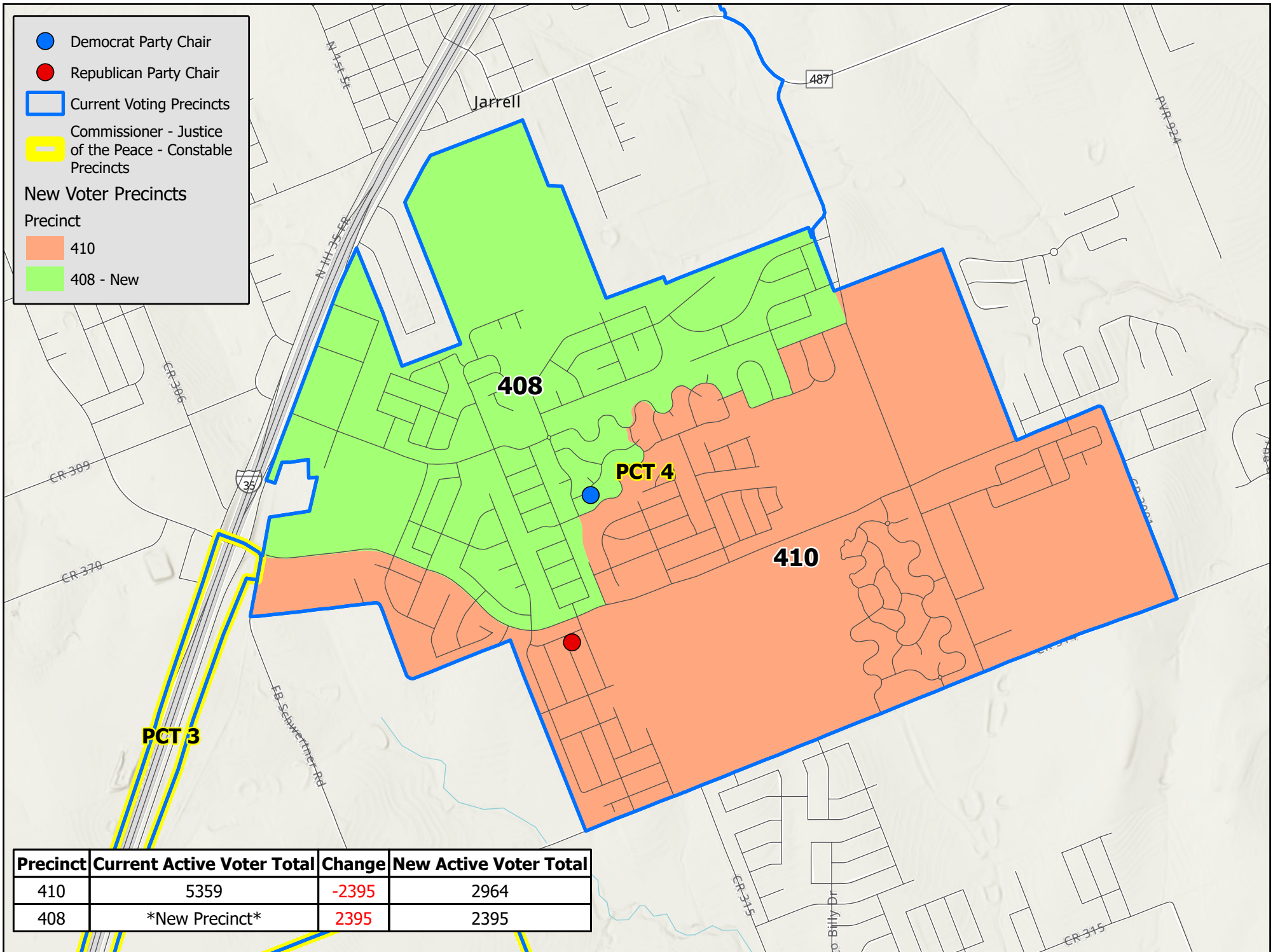




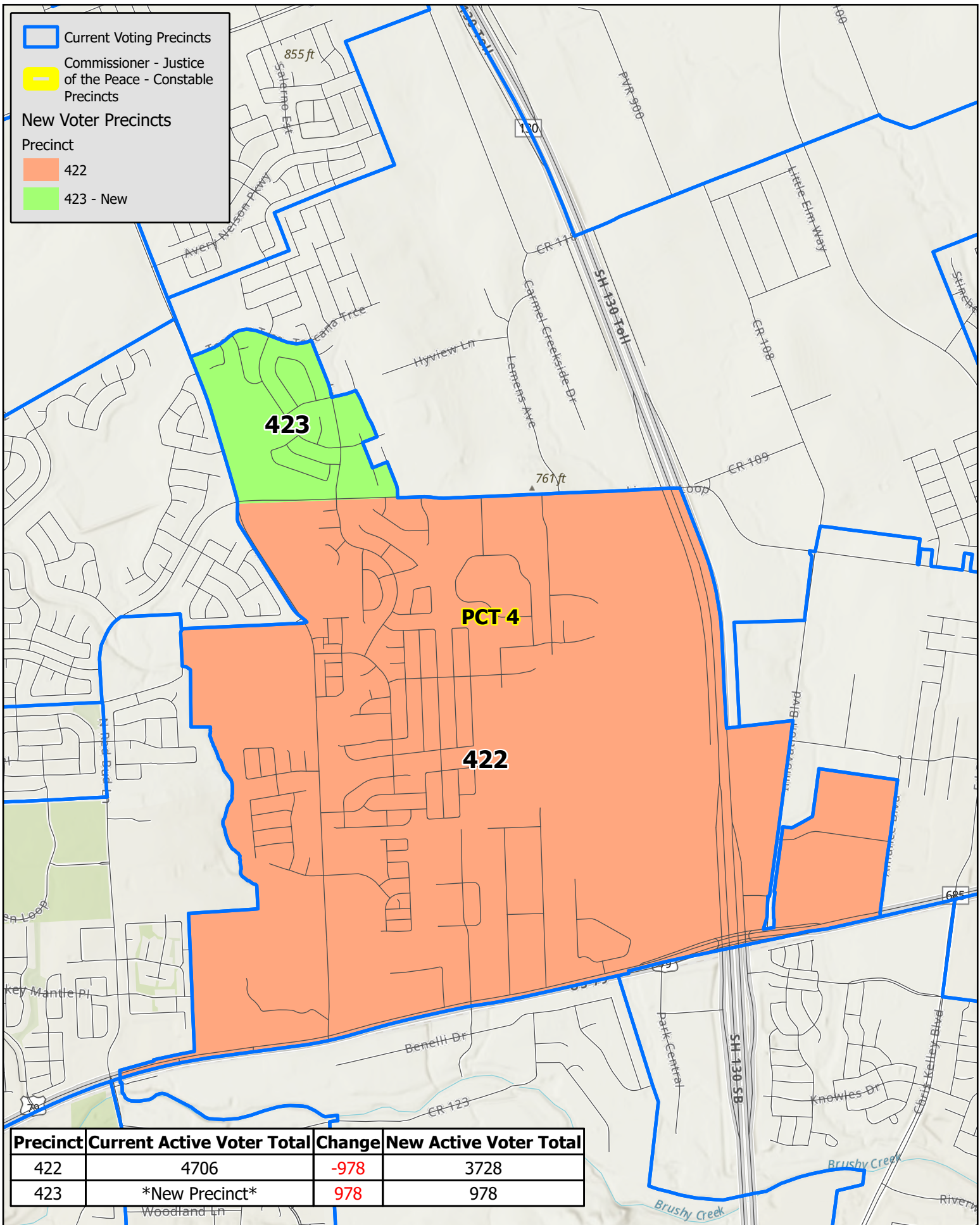




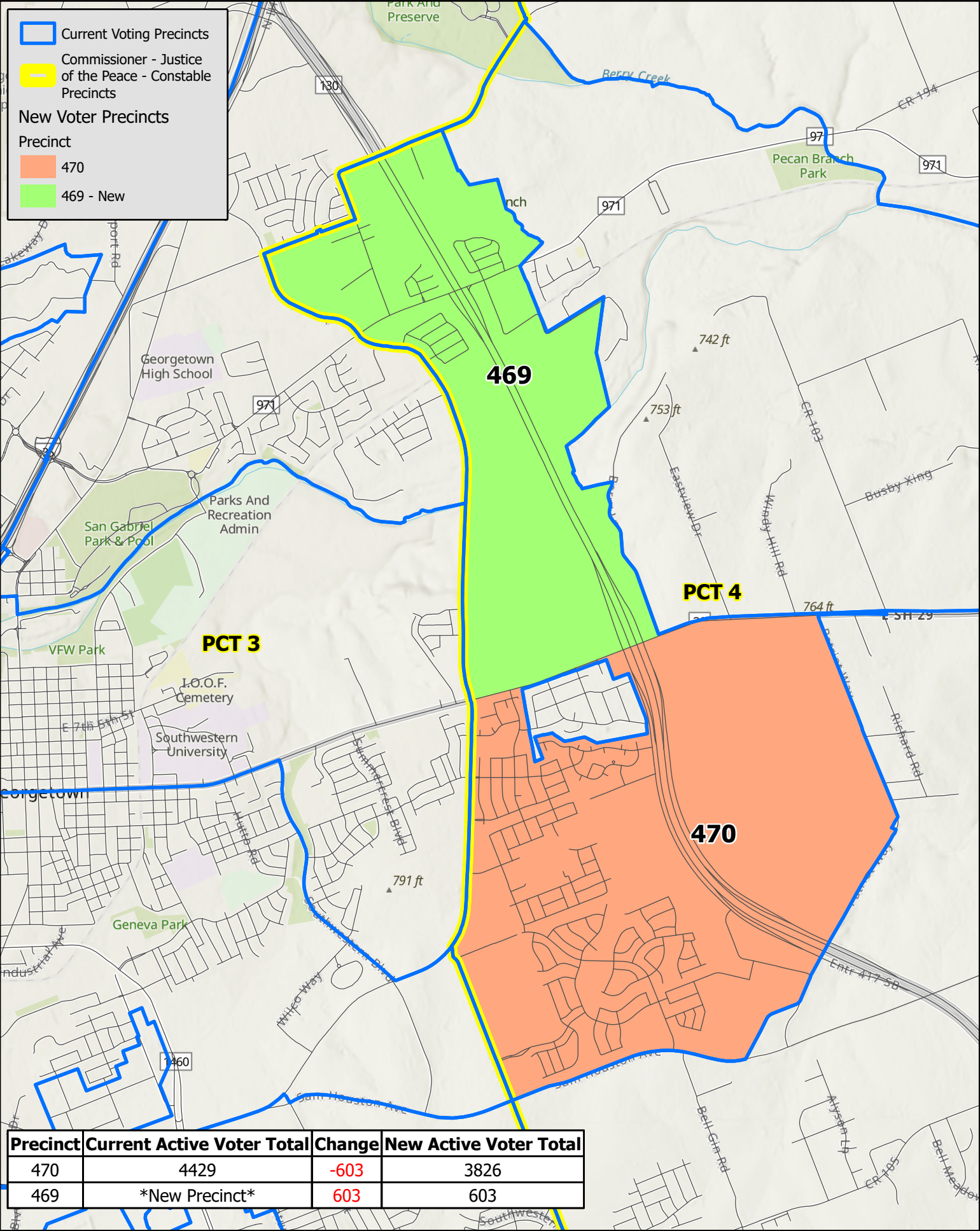












Precinct	Current Active Voter Total	Change	New Active Voter Total
470	4429	-603	3826
469	*New Precinct*	603	603