

A METES AND BOUNDS
DESCRIPTION OF A
50.679 ACRE TRACT OF LAND

BEING a 50.679 acre (2,207,582 square feet) tract of land situated in the B. Manlove Survey, Abstract No. 417, Williamson County, Texas; and being a portion of that certain 333.269 acres described in instrument to PHAU - ELDORADO 333, LLC in Document No. 2020064232 of the Official Public Records of Williamson County; and being more particularly described as follows:

BEGINNING at a 1/2 inch iron rod (with illegible plastic cap) found on the northeasterly right-of-way line of County Road 260 (variable width public right-of-way) and marking the southwest corner of that certain 85 acres described in instrument to Clyde Krause in Volume 1672, Page 391 of the Official Public Records of Williamson County;

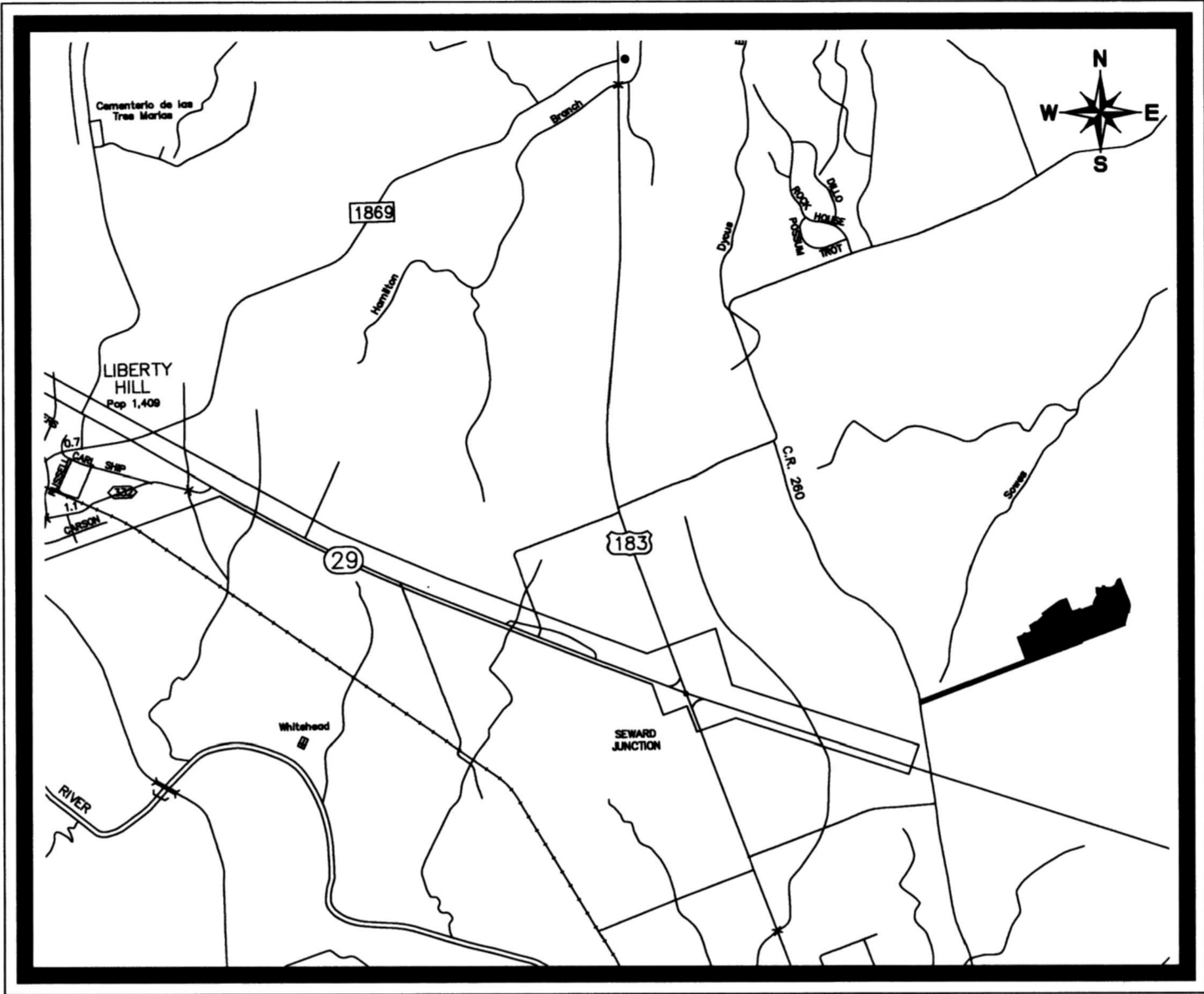
- THENCE, along the southerly, easterly, and northerly boundary of said 85 acres the following two (2) calls:
- North 69°16'16" East, 2331.86 feet to a 1/2 inch iron rod (with plastic cap stamped "AST") found for corner;
 - North 20°30'48" West, 500.92 feet to a 1/2 inch iron rod with plastic cap stamped ("KHA") set for corner;

- THENCE, crossing said 333.269 acres the following forty-seven (47) calls:
- North 69°29'12" East, 120.53 feet to a 1/2 inch iron rod with plastic cap stamped (KHA) set for the beginning of a curve;
 - in a northeasterly direction along a tangent curve to the left, having a radius of 15.00 feet, a chord of North 24°29'12" East, 21.21 feet, a central angle of 90°00'00", and an arc length of 23.56 feet to a 1/2 inch iron rod with plastic cap stamped (KHA) set for corner;
 - North 69°29'12" East, 70.00 feet to a 1/2 inch iron rod with plastic cap stamped (KHA) set for the beginning of a curve;
 - in a southeasterly direction along a non-tangent curve to the left, having a radius of 15.00 feet, a chord South 65°30'48" East, 21.21 feet, a central angle of 90°00'00", and an arc length of 23.56 feet to a 1/2 inch iron rod with plastic cap stamped (KHA) set for corner;
 - North 69°29'12" East, 100.00 feet to a 1/2 inch iron rod with plastic cap stamped (KHA) set for corner;
 - North 20°30'48" West, 121.45 feet to a 1/2 inch iron rod with plastic cap stamped (KHA) set for corner;
 - North 56°04'59" East, 152.44 feet to a 1/2 inch iron rod with plastic cap stamped (KHA) set for corner;
 - South 34°15'12" East, 16.02 feet to a 1/2 inch iron rod with plastic cap stamped (KHA) set for corner;
 - North 55°44'48" East, 50.00 feet to a 1/2 inch iron rod with plastic cap stamped (KHA) set for corner;
 - North 46°22'11" East, 156.26 feet to a 1/2 inch iron rod with plastic cap stamped (KHA) set for corner;
 - North 47°43'20" West, 47.94 feet to a 1/2 inch iron rod with plastic cap stamped (KHA) set for corner;
 - North 53°51'52" East, 432.40 feet to a 1/2 inch iron rod with plastic cap stamped (KHA) set for corner;
 - North 69°23'59" East, 87.22 feet to a 1/2 inch iron rod with plastic cap stamped (KHA) set for corner;
 - North 69°18'31" East, 100.00 feet to a 1/2 inch iron rod with plastic cap stamped (KHA) set for the beginning of a curve;
 - in a southeasterly direction along a non-tangent curve to the left, having a radius of 670.00 feet, a chord South 21°39'20" East, 22.55 feet, a central angle of 01°55'42", and an arc length of 22.55 feet to a 1/2 inch iron rod with plastic cap stamped (KHA) set for corner;
 - South 22°37'11" East, 269.34 feet to a 1/2 inch iron rod with plastic cap stamped (KHA) set for corner;
 - North 69°21'13" East, 167.74 feet to a 1/2 inch iron rod with plastic cap stamped (KHA) set for corner;
 - South 20°38'47" East, 30.00 feet to a 1/2 inch iron rod with plastic cap stamped (KHA) set for corner;
 - North 69°21'13" East, 280.00 feet to a 1/2 inch iron rod with plastic cap stamped (KHA) set for corner;
 - North 20°39'05" West, 29.32 feet to a 1/2 inch iron rod with plastic cap stamped (KHA) set for corner;
 - North 22°39'28" East, 152.99 feet to a 1/2 inch iron rod with plastic cap stamped (KHA) set for corner;
 - North 69°29'23" East, 27.42 feet to a 1/2 inch iron rod with plastic cap stamped (KHA) set for corner;
 - North 13°02'52" West, 87.44 feet to a 1/2 inch iron rod with plastic cap stamped (KHA) set for corner;
 - North 02°52'49" West, 87.44 feet to a 1/2 inch iron rod with plastic cap stamped (KHA) set for corner;
 - North 06°37'28" East, 89.89 feet to a 1/2 inch iron rod with plastic cap stamped (KHA) set for corner;
 - North 77°42'31" West, 40.08 feet to a 1/2 inch iron rod with plastic cap stamped (KHA) set for corner;
 - North 15°54'33" East, 90.74 feet to a 1/2 inch iron rod with plastic cap stamped (KHA) set for corner;
 - North 25°18'17" East, 130.84 feet to a 1/2 inch iron rod with plastic cap stamped (KHA) set for corner;
 - South 60°55'26" East, 76.88 feet to a 1/2 inch iron rod with plastic cap stamped (KHA) set for corner;
 - South 29°27'26" East, 76.63 feet to a 1/2 inch iron rod with plastic cap stamped (KHA) set for the beginning of a curve;
 - in a easterly direction along a non-tangent curve to the right, having a radius of 60.00 feet, a chord South 89°40'23" East, 59.61 feet, a central angle of 59°34'06", and an arc length of 62.38 feet to a 1/2 inch iron rod with plastic cap stamped (KHA) set for corner;
 - North 40°27'49" East, 70.57 feet to a 1/2 inch iron rod with plastic cap stamped (KHA) set for corner;
 - South 49°32'11" East, 196.93 feet to a 1/2 inch iron rod with plastic cap stamped (KHA) set for corner;
 - North 23°13'37" East, 48.23 feet to a 1/2 inch iron rod with plastic cap stamped (KHA) set for corner;
 - North 53°20'59" East, 72.82 feet to a 1/2 inch iron rod with plastic cap stamped (KHA) set for corner;
 - North 69°21'36" East, 10.00 feet to a 1/2 inch iron rod with plastic cap stamped (KHA) set for corner;
 - South 20°38'48" East, 172.70 feet to a 1/2 inch iron rod with plastic cap stamped (KHA) set for corner;
 - South 22°12'27" East, 183.61 feet to a 1/2 inch iron rod with plastic cap stamped (KHA) set for corner;
 - South 20°38'47" East, 130.00 feet to a 1/2 inch iron rod with plastic cap stamped (KHA) set for corner;
 - South 20°38'55" East, 86.90 feet to a 1/2 inch iron rod with plastic cap stamped (KHA) set for corner;
 - South 20°38'47" East, 55.20 feet to a 1/2 inch iron rod with plastic cap stamped (KHA) set for corner;
 - North 82°33'49" West, 21.49 feet to a 1/2 inch iron rod with plastic cap stamped (KHA) set for corner;
 - South 08°51'07" West, 152.09 feet to a 1/2 inch iron rod with plastic cap stamped (KHA) set for the beginning of a curve;
 - in a westerly direction along a non-tangent curve to the right, having a radius of 275.00 feet, a chord North 78°21'08" West, 26.83 feet, a central angle of 05°35'30", and an arc length of 26.84 feet to a 1/2 inch iron rod with plastic cap stamped (KHA) set for corner;
 - South 14°26'37" West, 252.57 feet to a 1/2 inch iron rod with plastic cap stamped (KHA) set for corner;
 - South 51°26'37" East, 21.33 feet to a 1/2 inch iron rod with plastic cap stamped (KHA) set for corner;
 - South 20°38'47" East, 29.08 feet to a 1/2 inch iron rod with plastic cap stamped (KHA) set marking a point for corner on the northwesterly boundary line of Lot 49, Block T, Santa Rita Ranch South, Section 9A, plat of which recorded in Document No. 2020004350 of the Official Public Records of Williamson County;

THENCE, South 69°21'13" West, 1699.93 feet along the northwesterly boundary line of said Lot 49, Block T, Santa Rita Ranch South, Section 9A, passing Section 8B plat of which recorded in Document No. 2020004350, to a 1/2 inch iron rod with plastic cap stamped (KHA) set marking the northeast corner of that certain 67.212 Acre tract described in instrument to Larry Everett Foust and Maydale Foust in Volume 764, Page 801 all of the Official Public Records of Williamson County;

- THENCE, along the northwesterly boundary of said 67.212 acre tract the following two (2) calls:
- South 69°43'55" West, 474.26 feet to a 2 and 1/2 inch fence post found for corner;
 - South 69°16'39" West, 2329.40 feet to a 1/2 inch iron rod found on the northeasterly right-of-way line of aforesaid County Road 260;

THENCE, North 21°56'08" West, 99.77 feet along the northeasterly right-of-way line of said County Road 260 to the POINT OF BEGINNING and containing 50.679 acres of land in Williamson County, Texas. The basis of bearing for this description is the Texas State Plane Coordinate System Grid, Central Zone (FIPS 4203) (NAD'83). All distances are on the Surface and shown in U.S. Survey Feet. The Surface to Grid scale factor is 0.999899231. This description was generated on 8/2/2025 at 12:05 PM, based on geometry in the drawing fileK:\SNA_Survey\069288000-liberty_hill_el_dorado\DWG\KIMLEY-HORN PLAT\EL DORADO LIBERTY HILL PHASE 1.dwg, in the office of Kimley-Horn and Associates in San Antonio, Texas.



VICINITY MAP

SCALE: 1" = 2,000'

STREET TABLE							
STREET NAME	TYPE	ROW	STREET LENGTH	SPEED DESIGN	PAVEMENT WDTH	URBAN/RURAL	PUBLIC/ PRIVATE
MATON WAY	LOCAL	50'	1493'	25 MPH	33' FOC-FOC	URBAN	PUBLIC
OSWALT WAY	ARTERIAL	60'	324'	25 MPH	43' FOC-FOC	URBAN	PUBLIC
OSWALT WAY	LOCAL	50'	987'	25 MPH	33' FOC-FOC	URBAN	PUBLIC
SPRINGER LANE	LOCAL	50'	233'	25 MPH	33' FOC-FOC	URBAN	PUBLIC
KEUCHEL LANE	LOCAL	50'	410'	25 MPH	33' FOC-FOC	URBAN	PUBLIC
ENSBERG LANE	LOCAL	50'	1248'	25 MPH	33' FOC-FOC	URBAN	PUBLIC
BOURNE DRIVE	LOCAL	50'	170'	25 MPH	33' FOC-FOC	URBAN	PUBLIC
BURKE STREET	LOCAL	50'	711'	25 MPH	33' FOC-FOC	URBAN	PUBLIC
ALTUVE LANE	LOCAL	50'	142'	25 MPH	33' FOC-FOC	URBAN	PUBLIC
SANTA RITA BOULEVARD	COLLECTOR	90'	979'	40 MPH	48' FOC-FOC	URBAN	PUBLIC

GENERAL INFORMATION:
TOTAL ACREAGE.....50.679 ACRES
TOTAL LINEAR FEET OF ROW.....6,668'
ACREAGE OF ROW.....10.026 ACRES
NUMBER OF SINGLE FAMILY LOTS.....135
ACREAGE OF SINGLE FAMILY LOTS.....31.366 ACRES
NUMBER OF HOA LANDSCAPE/DRAINAGE LOTS...6
ACREAGE OF HOA LANDSCAPE/DRAINAGE LOTS...9.287 ACRES
TOTAL NUMBER OF LOTS.....141
TOTAL NUMBER OF BLOCKS.....6

SHEET INDEX

SHEET NO.	DESCRIPTION
1	COVER SHEET AND LEGAL DESCRIPTION
2	PLAT SHEET
3	PLAT SHEET
4	PLAT SHEET
5	LINE - CURVE DATA AND LOTS TABLES
6	PLAT NOTES AND SIGNATURE SHEET

RELEASE OF THIS APPLICATION DOES NOT CONSTITUTE A VERIFICATION OF ALL DATA, INFORMATION AND CALCULATIONS SUPPLIED BY THE APPLICANT. THE ENGINEER OF RECORD IS SOLELY RESPONSIBLE FOR THE COMPLETENESS, ACCURACY AND ADEQUACY OF HIS/HER SUBMITTAL, WHETHER OR NOT THE APPLICATION IS REVIEWED FOR CODE COMPLIANCE BY CITY ENGINEERS.

1ST SUBMITTAL DATE: DECEMBER 10, 2024
2ND SUBMITTAL DATE: JANUARY 23, 2025

OWNER/DEVELOPER

PHAU - ELDORADO 333, LLC
1011 NORTH LAMAR
AUSTIN, TX 78703
TEL: 512-484-7469
CONTACT: NICK MCINTYRE

SURVEYOR

KIMLEY-HORN
10101 REUNION PLACE, SUITE 400
SAN ANTONIO, TX 78216
TEL: 210-541-9166
CONTACT: JOHN GREGORY MOSIER

ENGINEER

KIMLEY-HORN
5301 SOUTHWEST PARKWAY, BLDG 2, SUITE 100
AUSTIN, TX 78735
TEL: 512-646-2243
CONTACT: BENJAMIN L. GREEN

FINAL PLAT ESTABLISHING
ELDORADO LIBERTY HILL
PHASE 1 SUBDIVISION

BEING 50.679 ACRES OUT OF THE
B. MANLOVE SURVEY, ABSTRACT NO. 417
CITY OF LIBERTY HILLS ETJ,
WILLIAMSON COUNTY, TEXAS

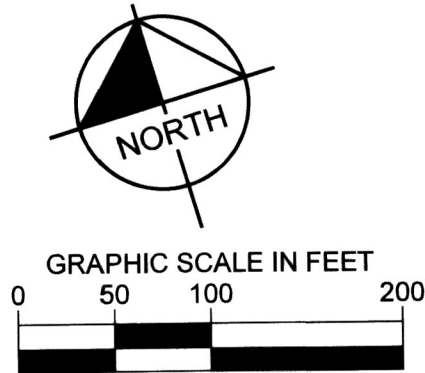
Kimley»Horn

10101 Reunion Place, Suite 400
San Antonio, Texas 78216 FIRM # 10193973 Tel. No. (210) 541-9166
www.kimley-horn.com

Scale	Drawn by	Checked by	Date	KHA Project No.	Sheet No.
AS SHOWN	MAV	JGM	6/3/2025	067782805	1 OF 6

LEGEND

IRSC 1/2" IRON ROD W/ "KHA" CAP SET
IRFC 1/2" IRON ROD FOUND W/ CAP
OPRWC OFFICIAL PUBLIC RECORDS OF WILLIAMSON COUNTY TEXAS
P.O.C. POINT OF COMMENCING
P.O.B. POINT OF BEGINNING
ROW RIGHT OF WAY
D.E. DRAINAGE EASEMENT
S.D.E. SIGHT DISTANCE EASEMENT
W.W.E. WASTEWATER EASEMENT
B.S.L. BUILDING SETBACK LINE
TBM BENCHMARK
SIDEWALK
PHASE LINE/MATCH LINE
BLOCK LABEL
FLOOD HAZARD LINE
CENTER LINE OF CREEK
PUE PUBLIC UTILITY EASEMENT



SETBACK DETAIL
NOT TO SCALE

DETAIL FOR VARIABLE WIDTH P.U.E. IN CUL-DE-SAC
NOT TO SCALE

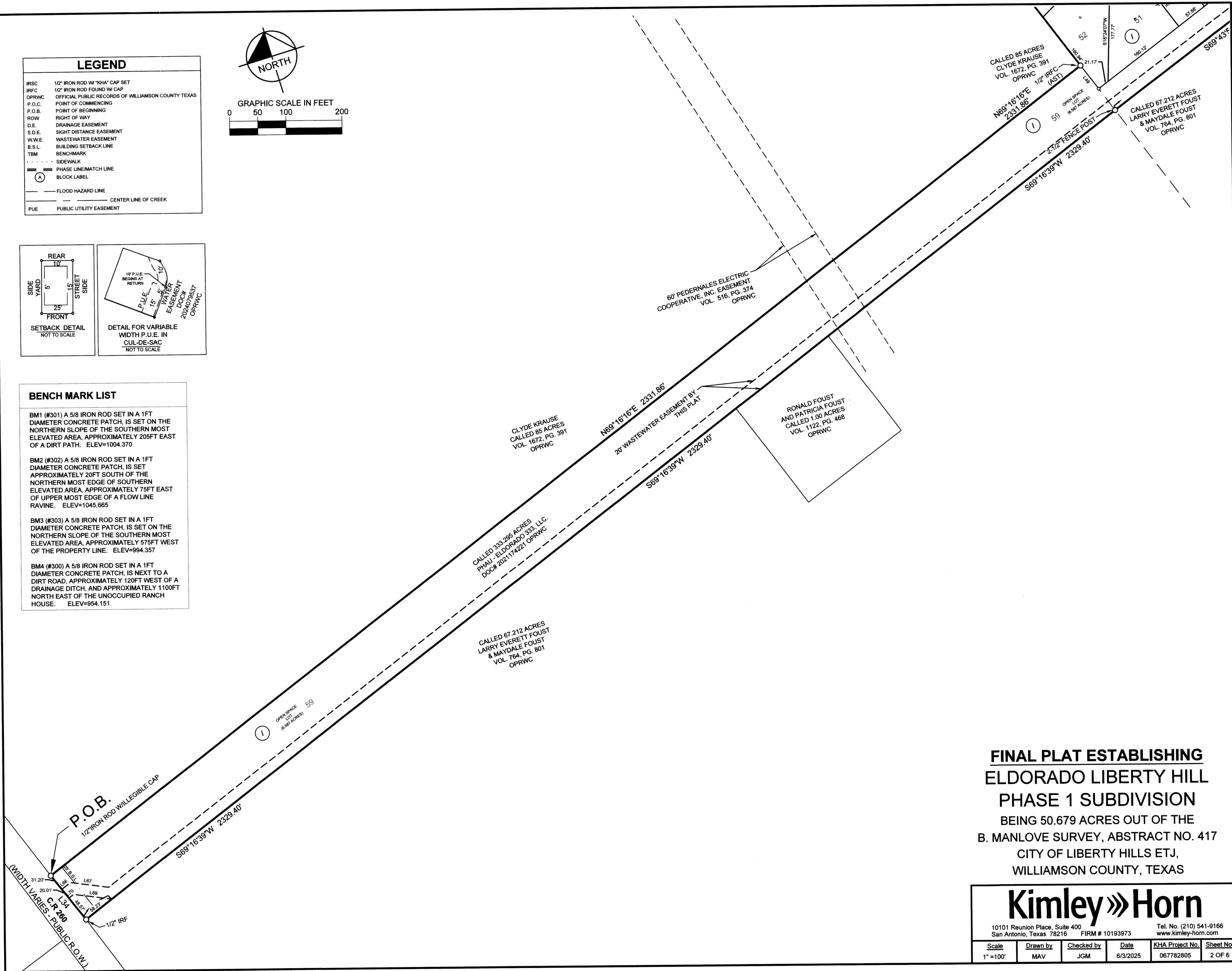
BENCH MARK LIST

BM1 (#301) A 5/8 IRON ROD SET IN A 1FT DIAMETER CONCRETE PATCH, IS SET ON THE NORTHERN SLOPE OF THE SOUTHERN MOST ELEVATED AREA, APPROXIMATELY 205FT EAST OF A DIRT PATH. ELEV=1004.370

BM2 (#302) A 5/8 IRON ROD SET IN A 1FT DIAMETER CONCRETE PATCH, IS SET APPROXIMATELY 20FT SOUTH OF THE NORTHERN MOST EDGE OF SOUTHERN ELEVATED AREA, APPROXIMATELY 75FT EAST OF UPPER MOST EDGE OF A FLOW LINE RAVINE. ELEV=1045.665

BM3 (#303) A 5/8 IRON ROD SET IN A 1FT DIAMETER CONCRETE PATCH, IS SET ON THE NORTHERN SLOPE OF THE SOUTHERN MOST ELEVATED AREA, APPROXIMATELY 575FT WEST OF THE PROPERTY LINE. ELEV=994.357

BM4 (#300) A 5/8 IRON ROD SET IN A 1FT DIAMETER CONCRETE PATCH, IS NEXT TO A DIRT ROAD, APPROXIMATELY 120FT WEST OF A DRAINAGE DITCH, AND APPROXIMATELY 1100FT NORTH EAST OF THE UNOCCUPIED RANCH HOUSE. ELEV=954.151



**FINAL PLAT ESTABLISHING
ELDORADO LIBERTY HILL
PHASE 1 SUBDIVISION**
BEING 50.679 ACRES OUT OF THE
B. MANLOVE SURVEY, ABSTRACT NO. 417
CITY OF LIBERTY HILLS ETJ,
WILLIAMSON COUNTY, TEXAS

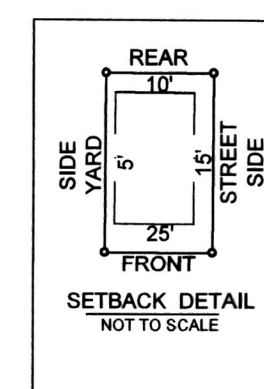
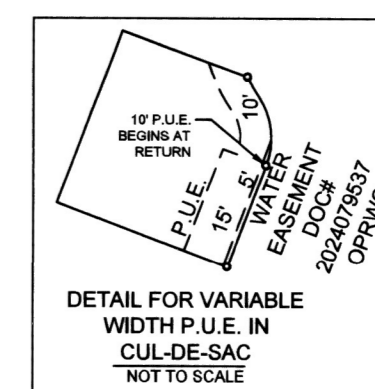
Kimley»Horn

10101 Reunion Place, Suite 400
San Antonio, Texas 78216 FIRM # 10193973 Tel. No. (210) 541-9166
www.kimley-horn.com

Scale	Drawn by	Checked by	Date	KHA Project No.	Sheet No.
1"=100'	MAV	JGM	6/3/2025	067782805	2 OF 6

LEGEND

IRSC	1/2" IRON ROD W/ "KHA" CAP SET
IRFC	1/2" IRON ROD FOUND W/ CAP
OPRWC	OFFICIAL PUBLIC RECORDS OF WILLIAMSON COUNTY TEXAS
P.O.C.	POINT OF COMMENCING
P.O.B.	POINT OF BEGINNING
ROW	RIGHT OF WAY
D.E.	DRAINAGE EASEMENT
S.D.E.	SIGHT DISTANCE EASEMENT
W.W.E.	WASTEWATER EASEMENT
B.S.L.	BUILDING SETBACK LINE
TBM	BENCHMARK
.....	SIDEWALK
---	PHASE LINE/MATCH LINE
(A)	BLOCK LABEL
---	FLOOD HAZARD LINE
---	CENTER LINE OF CREEK
PUE	PUBLIC UTILITY EASEMENT



BENCH MARK LIST

BM1 (#301) A 5/8 IRON ROD SET IN A 1FT DIAMETER CONCRETE PATCH, IS SET ON THE NORTHERN SLOPE OF THE SOUTHERN MOST ELEVATED AREA, APPROXIMATELY 205FT EAST OF A DIRT PATH. ELEV=1004.370

BM2 (#302) A 5/8 IRON ROD SET IN A 1FT DIAMETER CONCRETE PATCH, IS SET APPROXIMATELY 20FT SOUTH OF THE NORTHERN MOST EDGE OF SOUTHERN ELEVATED AREA, APPROXIMATELY 75FT EAST OF UPPER MOST EDGE OF A FLOW LINE RAVINE. ELEV=1045.665

BM3 (#303) A 5/8 IRON ROD SET IN A 1FT DIAMETER CONCRETE PATCH, IS SET ON THE NORTHERN SLOPE OF THE SOUTHERN MOST ELEVATED AREA, APPROXIMATELY 575FT WEST OF THE PROPERTY LINE. ELEV=994.357

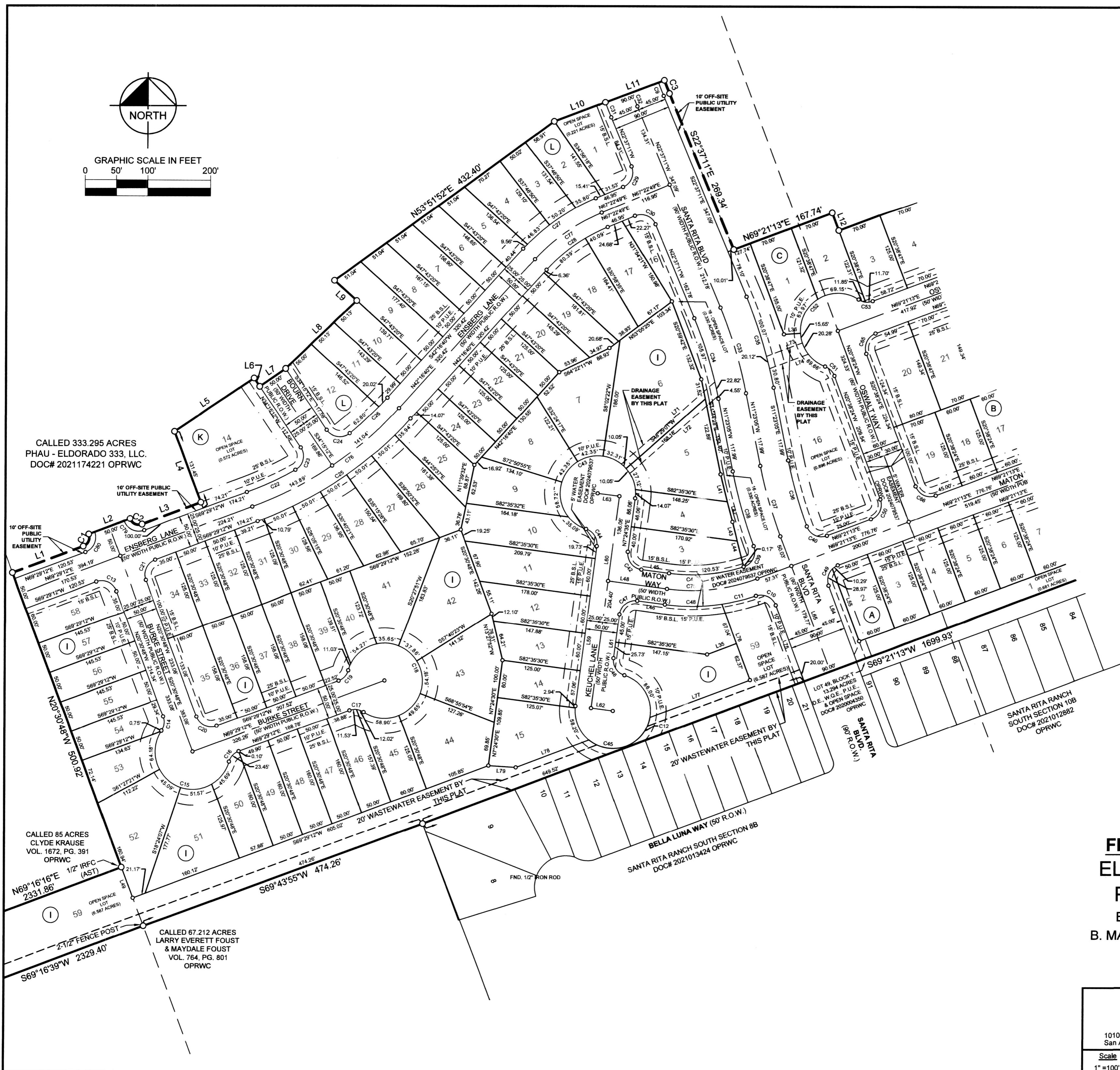
BM4 (#300) A 5/8 IRON ROD SET IN A 1FT DIAMETER CONCRETE PATCH, IS NEXT TO A DIRT ROAD, APPROXIMATELY 120FT WEST OF A DRAINAGE DITCH, AND APPROXIMATELY 1100FT NORTH EAST OF THE UNOCCUPIED RANCH HOUSE. ELEV=954.151

FINAL PLAT ESTABLISHING ELDORADO LIBERTY HILL PHASE 1 SUBDIVISION BEING 50.679 ACRES OUT OF THE B. MANLOVE SURVEY, ABSTRACT NO. 417 CITY OF LIBERTY HILLS ETJ, WILLIAMSON COUNTY, TEXAS

Kimley»Horn

10101 Reunion Place, Suite 400
San Antonio, Texas 78216 FIRM # 10193973 Tel. No. (210) 541-9166
www.kimley-horn.com

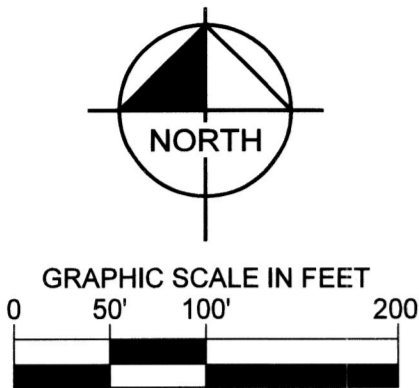
Scale	Drawn by	Checked by	Date	KHA Project No.	Sheet No.
1"=100'	MAV	JGM	6/3/2025	067782805	3 OF 6



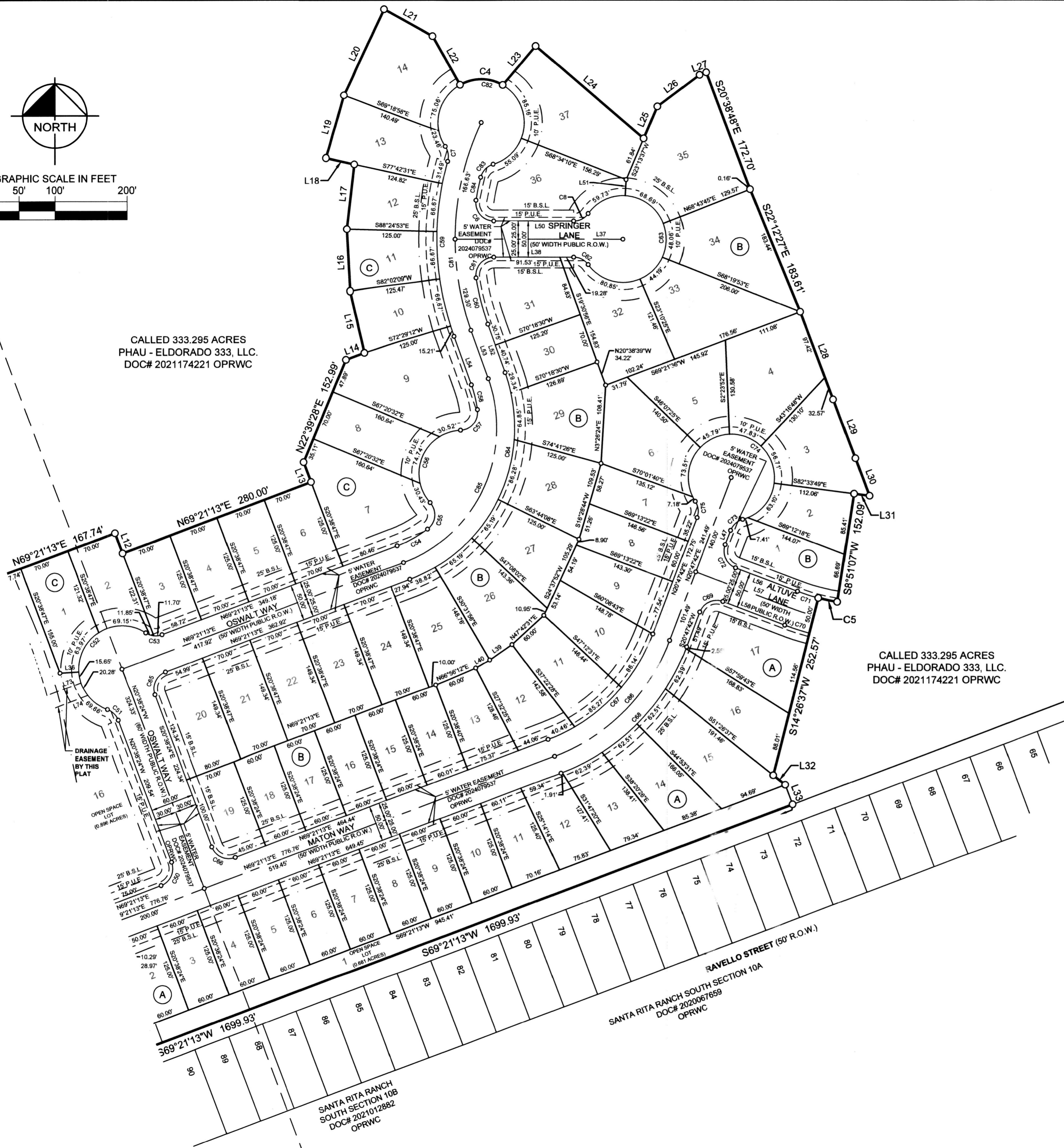
CALLED 333.295 ACRES
PHAU - ELDORADO 333, LLC.
DOC# 2021174221 OPRWC

CALLED 85 ACRES
CLYDE KRAUSE
VOL. 1672, PG. 391
OPRWC

CALLED 67.212 ACRES
LARRY EVERETT FOUST
& MAYDALE FOUST
VOL. 764, PG. 801
OPRWC



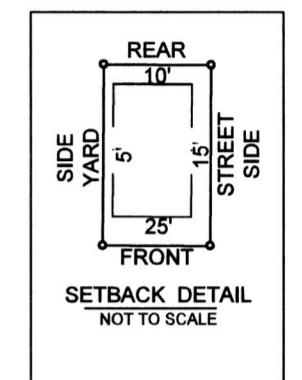
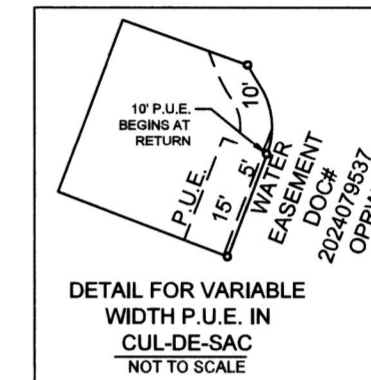
CALLED 333.295 ACRES
PHAU - ELDORADO 333, LLC.
DOC# 2021174221 OPRWC



CALLED 333.295 ACRES
PHAU - ELDORADO 333, LLC.
DOC# 2021174221 OPRWC

LEGEND

IRSC	1/2" IRON ROD W/ "KHA" CAP SET
IRFC	1/2" IRON ROD FOUND W/ CAP
OPRWC	OFFICIAL PUBLIC RECORDS OF WILLIAMSON COUNTY TEXAS
P.O.C.	POINT OF COMMENCING
P.O.B.	POINT OF BEGINNING
ROW	RIGHT OF WAY
D.E.	DRAINAGE EASEMENT
S.D.E.	SIGHT DISTANCE EASEMENT
W.W.E.	WASTEWATER EASEMENT
B.S.L.	BUILDING SETBACK LINE
TBM	BENCHMARK
---	SIDEWALK
---	PHASE LINE/MATCH LINE
(A)	BLOCK LABEL
---	FLOOD HAZARD LINE
---	CENTER LINE OF CREEK
PUE	PUBLIC UTILITY EASEMENT



BENCH MARK LIST

BM1 (#301) A 5/8 IRON ROD SET IN A 1FT DIAMETER CONCRETE PATCH, IS SET ON THE NORTHERN SLOPE OF THE SOUTHERN MOST ELEVATED AREA, APPROXIMATELY 205FT EAST OF A DIRT PATH. ELEV=1004.370

BM2 (#302) A 5/8 IRON ROD SET IN A 1FT DIAMETER CONCRETE PATCH, IS SET APPROXIMATELY 20FT SOUTH OF THE NORTHERN MOST EDGE OF SOUTHERN ELEVATED AREA, APPROXIMATELY 75FT EAST OF UPPER MOST EDGE OF A FLOW LINE RAVINE. ELEV=1045.665

BM3 (#303) A 5/8 IRON ROD SET IN A 1FT DIAMETER CONCRETE PATCH, IS SET ON THE NORTHERN SLOPE OF THE SOUTHERN MOST ELEVATED AREA, APPROXIMATELY 575FT WEST OF THE PROPERTY LINE. ELEV=994.357

BM4 (#300) A 5/8 IRON ROD SET IN A 1FT DIAMETER CONCRETE PATCH, IS NEXT TO A DIRT ROAD, APPROXIMATELY 120FT WEST OF A DRAINAGE DITCH, AND APPROXIMATELY 1100FT NORTH EAST OF THE UNOCCUPIED RANCH HOUSE. ELEV=954.151

FINAL PLAT ESTABLISHING ELDORADO LIBERTY HILL PHASE 1 SUBDIVISION BEING 50.679 ACRES OUT OF THE B. MANLOVE SURVEY, ABSTRACT NO. 417 CITY OF LIBERTY HILLS ETJ, WILLIAMSON COUNTY, TEXAS

Kimley»Horn

10101 Reunion Place, Suite 400
San Antonio, Texas 78216 FIRM # 10193973 Tel. No. (210) 541-9166
www.kimley-horn.com

Scale	Drawn by	Checked by	Date	KHA Project No.	Sheet No.
1"=100'	MAV	JGM	6/3/2025	067782805	4 OF 6

LOT TABLE		
LOT NO.	ACRES	SQ. FT.
BLOCK A, LOT 1 - OPEN SPACE LOT	0.681	29,678
BLOCK A, LOT 2	0.172	7,493
BLOCK A, LOT 3	0.172	7,500
BLOCK A, LOT 4	0.172	7,500
BLOCK A, LOT 5	0.172	7,500
BLOCK A, LOT 6	0.172	7,500
BLOCK A, LOT 7	0.172	7,500
BLOCK A, LOT 8	0.172	7,500
BLOCK A, LOT 9	0.172	7,500
BLOCK A, LOT 10	0.172	7,500
BLOCK A, LOT 11	0.187	8,142
BLOCK A, LOT 12	0.197	8,568
BLOCK A, LOT 13	0.209	9,117
BLOCK A, LOT 14	0.246	10,713
BLOCK A, LOT 15	0.315	13,739
BLOCK A, LOT 16	0.295	12,861
BLOCK A, LOT 17	0.344	15,000
BLOCK B LOT 1	0.265	11,557
BLOCK B LOT 2	0.198	8,608
BLOCK B LOT 3	0.303	13,211
BLOCK B LOT 4	0.389	16,935
BLOCK B LOT 5	0.272	11,832
BLOCK B LOT 6	0.309	13,447
BLOCK B LOT 7	0.199	8,678
BLOCK B LOT 8	0.199	8,663
BLOCK B LOT 9	0.220	9,570
BLOCK B LOT 10	0.236	10,285
BLOCK B LOT 11	0.244	10,627
BLOCK B LOT 12	0.223	9,729
BLOCK B LOT 13	0.196	8,553
BLOCK B LOT 14	0.172	7,501
BLOCK B LOT 15	0.172	7,500
BLOCK B LOT 16	0.172	7,500
BLOCK B LOT 17	0.172	7,500
BLOCK B LOT 18	0.172	7,500
BLOCK B LOT 19	0.198	8,616

LOT TABLE		
LOT NO.	ACRES	SQ. FT.
BLOCK B LOT 20	0.271	11,812
BLOCK B LOT 21	0.240	10,454
BLOCK B LOT 22	0.240	10,454
BLOCK B LOT 23	0.240	10,454
BLOCK B LOT 24	0.240	10,454
BLOCK B LOT 25	0.272	11,840
BLOCK B LOT 26	0.292	12,732
BLOCK B LOT 27	0.254	11,083
BLOCK B LOT 28	0.272	11,869
BLOCK B LOT 29	0.298	12,965
BLOCK B LOT 30	0.201	8,775
BLOCK B LOT 31	0.295	12,843
BLOCK B LOT 32	0.338	14,717
BLOCK B LOT 33	0.350	15,265
BLOCK B LOT 34	0.373	16,262
BLOCK B LOT 35	0.484	21,077
BLOCK B LOT 36	0.366	15,932
BLOCK B LOT 37	0.396	17,271
BLOCK C, LOT 1	0.230	10,017
BLOCK C, LOT 2	0.207	9,025
BLOCK C, LOT 3	0.201	8,740
BLOCK C, LOT 4	0.201	8,750
BLOCK C, LOT 5	0.201	8,750
BLOCK C, LOT 6	0.201	8,750
BLOCK C, LOT 7	0.425	18,494
BLOCK C, LOT 8	0.246	10,708
BLOCK C, LOT 9	0.438	19,063
BLOCK C, LOT 10	0.219	9,550
BLOCK C, LOT 11	0.219	9,550
BLOCK C, LOT 12	0.222	9,668
BLOCK C, LOT 13	0.288	12,530
BLOCK C, LOT 14	0.345	15,031
BLOCK C, LOT 16 - OPEN SPACE LOT	0.896	39,015
BLOCK I, LOT 1	0.352	15,313
BLOCK I, LOT 2	0.289	12,581
BLOCK I, LOT 3	0.246	10,697

LOT TABLE		
LOT NO.	ACRES	SQ. FT.
BLOCK I, LOT 4	0.219	9,537
BLOCK I, LOT 5	0.332	14,473
BLOCK I, LOT 6	0.581	25,321
BLOCK I, LOT 7	0.323	14,068
BLOCK I, LOT 8	0.234	10,201
BLOCK I, LOT 9	0.220	9,599
BLOCK I, LOT 10	0.281	12,235
BLOCK I, LOT 11	0.267	11,634
BLOCK I, LOT 12	0.223	9,735
BLOCK I, LOT 13	0.188	8,186
BLOCK I, LOT 14	0.172	7,500
BLOCK I, LOT 15	0.282	12,294
BLOCK I, LOT 16 - OPEN SPACE LOT	0.330	14,391
BLOCK I, LOT 17	0.239	10,399
BLOCK I, LOT 18	0.237	10,303
BLOCK I, LOT 19	0.178	7,739
BLOCK I, LOT 20	0.155	6,757
BLOCK I, LOT 21	0.143	6,250
BLOCK I, LOT 22	0.143	6,250
BLOCK I, LOT 23	0.143	6,250
BLOCK I, LOT 24	0.143	6,250
BLOCK I, LOT 25	0.177	7,722
BLOCK I, LOT 26	0.228	9,913
BLOCK I, LOT 27	0.207	9,007
BLOCK I, LOT 28	0.183	7,989
BLOCK I, LOT 29	0.168	7,319
BLOCK I, LOT 30	0.163	7,098
BLOCK I, LOT 31	0.143	6,250
BLOCK I, LOT 32	0.143	6,250
BLOCK I, LOT 33	0.143	6,250
BLOCK I, LOT 34	0.169	7,366
BLOCK I, LOT 35	0.215	9,351
BLOCK I, LOT 36	0.181	7,904
BLOCK I, LOT 37	0.181	7,904
BLOCK I, LOT 38	0.181	7,904
BLOCK I, LOT 39	0.178	7,735

LOT TABLE		
LOT NO.	ACRES	SQ. FT.
BLOCK I, LOT 40	0.146	6,368
BLOCK I, LOT 41	0.286	12,468
BLOCK I, LOT 42	0.369	16,082
BLOCK I, LOT 43	0.336	14,649
BLOCK I, LOT 44	0.335	14,603
BLOCK I, LOT 45	0.187	8,125
BLOCK I, LOT 46	0.183	7,991
BLOCK I, LOT 47	0.184	8,000
BLOCK I, LOT 48	0.184	8,000
BLOCK I, LOT 49	0.184	8,000
BLOCK I, LOT 50	0.189	8,233
BLOCK I, LOT 51	0.320	13,942
BLOCK I, LOT 52	0.329	14,328
BLOCK I, LOT 53	0.171	7,462
BLOCK I, LOT 54	0.166	7,209
BLOCK I, LOT 55	0.167	7,276
BLOCK I, LOT 56	0.167	7,276
BLOCK I, LOT 57	0.167	7,276
BLOCK I, LOT 58	0.197	8,597
BLOCK I LOT 59 - OPEN SPACE LOT	6.587	286,922
BLOCK K, LOT 14 - OPEN SPACE	0.572	24,927
BLOCK L, LOT 1 - OPEN SPACE LOT	0.221	9,643
BLOCK L, LOT 2	0.167	7,280
BLOCK L, LOT 3	0.149	6,484
BLOCK L, LOT 4	0.176	7,686
BLOCK L, LOT 5	0.162	7,077
BLOCK L, LOT 6	0.174	7,589
BLOCK L, LOT 7	0.186	8,101
BLOCK L, LOT 8	0.198	8,614
BLOCK L, LOT 9	0.210	9,127
BLOCK L, LOT 10	0.162	7,075
BLOCK L, LOT 11	0.166	7,252
BLOCK L, LOT 12	0.241	10,488

CURVE TABLE						CURVE TABLE					
NO.	DELTA	RADIUS	LENGTH	CHORD BEARING	CHORD	NO.	DELTA	RADIUS	LENGTH	CHORD BEARING	CHORD
C1	90°00'00"	15.00'	23.56'	N24°29'12"E	21.21'	C44	79°49'47"	25.00'	34.83'	N32°30'27"W	32.08'
C2	90°00'00"	15.00'	23.56'	S65°30'48"E	21.21'	C45	259°50'09"	60.00'	272.10'	N57°29'25"E	92.04'
C3	1°55'42"	670.00'	22.55'	S21°39'20"E	22.55'	C46	79°50'09"	25.00'	34.83'	S32°30'35"E	32.08'
C4	59°34'06"	60.00'	62.38'	S89°40'23"E	59.61'	C47	90°00'00"	25.00'	39.27'	S52°24'30"W	35.36'
C5	5°35'30"	275.00'	26.84'	N78°21'08"W	26.83'	C48	16°03'25"	325.00'	91.08'	N89°22'47"E	90.78'
C6	98°51'00"	25.00'	43.13'	S40°30'42"E	37.98'	C49	89°57'00"	25.00'	39.25'	S24°22'43"W	35.34'
C7	49°11'02"	25.00'	21.46'	N08°56'49"W	20.81'	C50	89°59'37"	25.00'	39.27'	N24°21'24"E	35.35'
C8	53°58'01"	25.00'	23.55'	N63°04'46"E	22.69'	C51	49°40'47"	25.00'	21.68'	N45°28'48"W	21.00'
C9	1°55'42"	680.00'	22.89'	S21°39'20"E	22.88'	C52	193°38'29"	60.00'	202.78'	S26°30'03"W	119.15'
C10	87°51'25"	25.00'	38.33'	N64°38'23"W	34.69'	C53	53°58'05"	25.00'	23.55'	S83°39'45"E	22.69'
C11	9°55'10"	325.00'	56.27'	N76°23'30"E	56.20'	C54	15°48'45"	175.00'	48.30'	N61°26'53"E	48.14'
C12	119°19'10"	60.00'	124.95'	N69°21'36"E	103.56'	C55	95°37'35"	25.00'	41.72'	N05°43'44"E	37.05'
C13	90°00'00"	25.00'	39.27'	N65°30'48"W	35.36'	C56	129°34'08"	60.00'	135.68'	S22°42'00"W	108.57'
C14	53°58'05"	25.00'	23.55'	N06°28'15"E	22.69'	C57	95°37'35"	25.00'	41.72'	N39°40'17"E	37.05'
C15	197°56'10"	60.00'	207.28'	S65°30'48"E	118.53'	C58	11°33'58"	174.75'	35.28'	N13°55'15"W	35.22'
C16	53°58'05"	25.00'	23.55'	S42°30'10"W	22.69'	C59	35°20'11"	400.00'	246.70'	N02°01'26"W	242.80'
C17	53°58'05"	25.00'	23.55'	N83°31'45"W	22.69'	C60	10°54'19"	350.00'	66.62'	S14°14'21"E	66.52'
C18	287°56'10"	60.00'	301.53'	N20°30'48"W	70.59'	C61	98°51'00"	25.00'	43.13'	S40°38'18"W	37.98'
C19	53°58'05"	25.00'	23.55'	N42°30'10"E	22.69'	C62	53°58'05"	25.00'	23.55'	N62°57'09"W	22.69'
C20	90°00'00"	25.00'	39.27'	S65°30'48"E	35.36'	C63	287°56'08"	60.00'	301.53'	N00°03'50"E	70.59'
C21	90°00'00"	25.00'	39.27'	S24°29'12"W	35.36'	C64	89°02'43"	225.00'	349.68'	N24°49'51"E	315.54'
C22	8°31'27"	575.00'	85.55'	N65°13'29"E	85.47'	C65	89°59'37"	25.00'	39.27'	S24°21'24"W	35.35'
C23	95°12'57"	25.00'	41.55'	N13°21'16"E	36.93'	C66	90°00'23"	25.00'	39.27'	S65°38'36"E	35.36'
C24	95°12'57"	25.00'	41.55'	S81°51'41"E	36.93'	C67	48°33'30"	250.00'	211.88'	N45°04'27"E	205.59'
C25	27°12'32"	625.00'	296.80'	N55°52'56"E	294.02'	C68	48°33'30"	300.00'	254.25'	N45°04'27"E	246.71'
C26	8°15'10"	575.00'	82.82'	N46°24'15"E	82.75'	C69	90°00'00"	25.00'	39.27'	S65°47'42"W	35.36'
C27	25°06'09"	325.00'	142.39'	S54°49'45"W	141.25'	C70	6°21'06"	325.00'	36.03'	S72°22'51"E	36.01'
C28	25°06'09"	275.00'	120.48'	S54°49'45"W	119.52'	C71	6°21'06"	275.00'	30.49'	S72°22'51"E	30.47'
C29	90°00'00"	25.00'	39.27'	N22°22'49"E	35.36'	C72	90°00'00"	25.00'	39.27'	S24°12'18"E	35.36'
C30	90°00'00"	25.00'	39.27'	N67°37'11"W	35.36'	C73	53°58'05"	25.00'	23.55'	S47°46'45"W	22.69'
C31	1°55'42"	770.00'	25.91'	S21°39'20"E	25.91'	C74	287°56'10"	60.00'	301.53'	N69°12'18"W	70.59'
C32	1°55'42"	725.00'	24.40'	S21°39'20"E	24.40'	C75	53°58'05"	25.00'	23.55'	N06°11'20"W	22.69'
C33	11°14'06"	725.00'	142.16'	N17°00'08"W	141.94'	C76	27°12'32"	600.00'	284.93'	N55°52'56"E	282.26'
C34	11°14'06"	680.00'	133.34'	N17°00'08"W	133.13'	C77	25°06'09"	300.00'	131.44'	S54°49'45"W	130.39'
C35	11°14'06"	770.00'	150.99'	N17°00'08"W	150.75'	C78	28°03'17"	300.00'	146.89'	S83°22'51"W	145.43'
C36	9°15'25"	680.00'	109.87'	S16°00'48"E	109.75'	C79	90°00'00"	25.00'	39.27'	S65°30'48"E	35.36'
C37	9°15'19"	725.00'	117.11'	S16°00'45"E	116.99'	C80	90°00'00"	25.00'	39.27'	N24°29'12"E	35.36'
C38	9°13'57"	770.00'	124.08'	S16°00'03"E	123.94'	C81	45°12'46"	375.00'	295.92'	S02°54'54"W	288.30'
C39	92°56'51"	25.00'	40.56'	N25°47'15"E	36.25'	C82	287°34'55"	60.00'	301.16'	N69°44'53"W	70.89'
C40	90°00'17"	25.00'	39.27'	S65°38'39"E	35.36'	C83	59°49'13"	25.00'	26.10'	S44°07'58"W	24.93'
C41	25°06'43"	275.00'	120.53'	N84°51'08"E	119.57'	C84	5°18'34"	350.00'	32.43'	S11°34'05"W	32.42'
C42	90°00'00"	25.00'	39.27'	S37°35'30"E	35.36'	C85	89°02'43"	200.00'	310.83'	N24°49'51"E	280.48'
C43	259°50'14"	60.00'	272.10'	S57°29'23"W	92.03'	C86	48°33'30"	275.00'	233.06'	N45°04'27"E	226.15'

LINE TABLE			LINE TABLE			LINE TABLE			LINE TABLE		
NO.	BEARING	LENGTH	NO.	BEARING	LENGTH	NO.	BEARING	LENGTH	NO.	BEARING	LENGTH
L1	N69°29'12"E	120.53'	L26	N53°20'59"E	72.82'	L51	N03°08'00"E	22.51'	L77	S69°21'36"W	170.70'
L2	N69°29'12"E	70.00'	L27	N69°21'36"E	10.00'	L52	S19°41'30"E	71.49'	L78	N69°21'36"E	124.98'
L3	N69°29'12"E	100.00'	L28	S20°38'47"E	130.00'	L53	N19°41'30"W	71.49'	L79	S86°27'27"E	43.34'
L4	N20°30'48"W	121.45'	L29	S20°38'55"E	86.90'	L54	N19°41'30"W	71.49'			
L5	N56°04'59"E	152.44'	L30	S20°38'47"E	55.20'	L55	S20°38'24"E	122.91'			
L6	S34°15'12"E	16.02'	L31	S82°33'49"E	21.49'	L56	S69°12'18"E	91.97'			
L7	N55°44'48"E	50.00'	L32	S51°26'37"E	21.33'	L57	N69°12'18"W	141.97'			
L8	N46°22'11"E	156.26'	L33	S20°38'47"E	29.08'	L58	N69°12'18"W	91.97'			
L9	N47°43'20"W	47.94'	L34	N21°56'08"W	99.77'	L59	S07°24'31"W	256.79'			
L10	N69°23'59"E	87.22'	L35	N69°21'36"E	50.00'	L60	S07°24'31"W	340.46'			
L11	N69°18'31"E	100.00'	L36	N86°12'15"E	26.24'	L61	S07°24'30"W	70.73'			
L12	S20°38'47"E	30.00'	L37	N89°56'12"W	233.42'	L62	S82°35'29"E	35.00'			
L13	N20°39'05"W	29.32'	L38	S89°56'12"E	110.81'	L63	N82°35'30"W	35.00'			
L14	N69°29'23"E	27.42'	L39	N55°59'50"E	22.55'	L64	S20°38'24"E	129.10'			
L15	N13°02'52"W	87.44'	L40	N60°07'51"E	37.48'	L65	N20°38'24"W	229.80'			
L16	N02°52'49"W	87.44'	L41	S13°53'31"E	45.07'	L66	N69°21'36"E	19.60'			
L17	N06°37'28"E	89.89'	L42	S14°50'12"E	33.51'	L67	S65°38'24"E	68.53'			
L18	N77°42'31"W	40.08'	L43	S14°26'53"E	31.22'	L69	N65°38'24"W	68.55'			
L19	N15°54'33"E	90.74'	L44	S14°26'53"E	42.03'	L70	S69°21'36"W	10.86'			
L20	N25°18'17"E	130.84'	L45	S82°35'30"E	44.86'	L71	N48°29'01"E	198.20'			
L21	S60°55'26"E	76.88'	L46	N82°35'30"W	44.86'	L72	S48°29'01"W	187.21'			
L22	S29°27'26"E	76.63'	L47	S20°47'42"W	21.26'	L73	N69°21'13"E	60.68'			
L23	N40°27'49"E	70.57'	L48	N82°35'30"W	94.86'	L74	S69°21'13"W	65.59'			
L24	S49°32'11"E	196.93'	L49	N20°30'48"W	52.16'	L75	N20°38'24"W	129.34'			
L25	N23°13'37"E	48.23'	L50	S89°56'13"E	110.81'	L76	S20°38'24"E	129.41'			

DWG NAME: K:\SNA SURVEY\0628800\JIBERTY Hill	FI	DORADO\068725501 FI	DORADO \JIBERTY Hill	PH1\DWG\PI	ATSIKIMI	EX-HORN PI	ATFI	DORADO \JIBERTY Hill	PHASE 1	DWG	PI	LOT	BY	GONZALEZ	DAVID	6/2/2025	2:00 PM	LAST SAVED
DWG NAME: K:\SNA SURVEY\0628800\JIBERTY Hill	FI	DORADO\068725501 FI	DORADO \JIBERTY Hill	PH1\DWG\PI	ATSIKIMI	EX-HORN PI	ATFI	DORADO \JIBERTY Hill	PHASE 1	DWG	PI	LOT	BY	GONZALEZ	DAVID	6/2/2025	2:00 PM	LAST SAVED