



May 8, 2025

Steven Snell  
Williamson County Judge  
710 Main Street, Georgetown, TX, 78626  
[Steve.Snell@wilcotx.gov](mailto:Steve.Snell@wilcotx.gov)  
(512) 943-1550

Re: Line P(2<sup>nd</sup>) (30" Steel Gas Pipeline) and Line P(South) (20" Steel Gas Pipeline), Atmos Energy Pipeline and the *SE LOOP PH2 PLAN AND PROFILE ATMOS GAS LONO EXHIBIT* for the proposed East Wilco Hwy Seg 2 Ph 1 Project, Williamson County, TX.

Dear Mr. Snell,

It is Atmos Energy Corporation's (Atmos Energy) understanding that Cobb, Fendley & Associates, Inc., on behalf of Williamson County, developed the *SE LOOP PH2 PLAN AND PROFILE ATMOS GAS LONO EXHIBIT* depicting the proposed roadway improvements, including a proposed 56.5' wide roadway that will consist of three (3) 12' wide travel lanes with 4'-4.5' wide concrete shoulders and a 10' wide concrete shared use path, that will encroach upon Atmos Energy's Line P(2<sup>nd</sup>) (30" Steel Gas Pipeline) and Line P(South) (20" Steel Gas Pipeline) easement at approximate pipeline station numbers 1411+60 and 1109+86, respectively.

The proposed design for the proposed roadway pavement improvements as shown in the *SE LOOP PH2 PLAN AND PROFILE ATMOS GAS LONO EXHIBIT*, provided by professional engineer, Derrick Horvath, on April 2, 2025, indicates that proposed roadway pavement improvements, consisting of three (3) 12' wide travel lanes with 4'-4.5' wide concrete shoulders and a 10' wide concrete shared use path, will encroach upon Atmos Energy's Line P(2<sup>nd</sup>) (30" Steel Gas Pipeline) and Line P(South) (20" Steel Gas Pipeline) at or near a thirty nine (39°) angle as approved by Atmos Energy. The existing depth from the top of Line P(2<sup>nd</sup>) (30" Steel Gas Pipeline) to the existing grade level was pothole verified as approximately **4.22 feet** and the existing depth from the top of Line P(South) (20" Steel Gas Pipeline) to the existing grade level was pothole verified as approximately **3.38 feet**. Per the proposed design, existing cover shall not be reduced within the Atmos easement. No excavation or "open-cut" method has been approved over the Atmos Energy gas pipelines and their perspective easements. **For any construction equipment crossing the Atmos Energy pipelines, a timber matting air-bridge per Atmos Standard 11-100-00 shall be utilized.**

Based on the above referenced information, Atmos Energy has determined that the design for the proposed roadway pavement improvements, consisting of three (3) 12' wide travel lanes with 4'-4.5' wide concrete shoulders and a 10' wide concrete shared use path will not present a significant conflict provided that this letter is executed and returned prior to the commencement of the construction and the following additional criteria are followed:

During Construction:

- Based on previously provided construction equipment loads and a stress analysis, a timber matting air-bridge per **Atmos Standard 11-100-00** shall be utilized for any construction equipment crossing prior to the installation of the above referenced road/street and protective slab. There must be an air gap over the designated crossing locations for the construction equipment to cross. *At no time shall construction equipment be allowed to travel parallel with the right-of-way, directly over the top of any Atmos pipeline*
- A minimum of **4.22 feet** for Atmos Energy's Line P(2<sup>nd</sup>) (30" Steel Gas Pipeline) and **3.38 feet** for Atmos Energy's Line P(South) (20" Steel Gas Pipeline) of existing cover shall be maintained over the existing Atmos Energy facilities where construction vehicle crossings will occur prior to the construction of the proposed roadway pavement improvements for Williamson County.
- No medium to large vibratory compaction equipment is allowed within a minimum of 10 feet from the pipeline(s). Only walk-behind vibratory rollers / compactors are allowed.

Atmos Energy will not object to the construction of this portion of the proposed project if the following additional criteria are met:

- Please contact Texas 811 for line locates 72 hours prior to excavation. Please contact **Atmos Energy Damage Prevention Representative Chris Wren at (512) 801-5824** in advance of excavation activities within the vicinity of Atmos Energy facilities.
- **Atmos Energy's facilities must be exposed, and their elevations field verified prior to starting any construction activity.** In the event that Atmos Energy's facilities were inaccurately represented in the proposed design, construction will not be allowed to continue in Atmos Energy's easement until the field-verified location(s) of Atmos Energy facilities have been incorporated into the project design and resubmitted to Atmos Energy for re-review and approval.
- Mechanical excavation (and/or compaction), with the exception of the potholing procedure mentioned above, is not allowed within five feet (5') horizontally from Atmos Energy's facilities. Excavation (and / or compaction) closer than five feet (5') horizontally from Atmos Energy's facilities must be done by hand.
- Positive drainage must be maintained within Atmos Energy's easement. Placement of any additional fill within the easement is not permitted without the prior written approval of Atmos Energy.
- Atmos Energy's easement will be protected from washing and erosion during construction and/or repairs.
- At no time may cover be removed from the easement or right-of-way without the prior written approval of Atmos Energy and in no case may cover over Atmos Energy's

facilities be reduced to less than existing grade depth (top of grade to top of pipe).


- Atmos Energy's easement will be protected from washing and erosion during construction and/or repairs.
- Equipment, materials, or excess dirt will not be stored on the easement during construction without the prior written approval of Atmos Energy.
- Atmos Energy will not be responsible for damage to any allowed encroachments.
- Atmos Energy reserves the right for future uses of this easement, including but not limited to, ingress and egress, reconstructing, removing, relocating, maintaining, operating, etc., of any of its facilities.
- Impact/conflict analysis was based on and is limited to drawings and documents submitted to Atmos Energy, as referenced above. ANY change in scope of work contained in these drawings must be resubmitted for re-review and approval.

**You are not authorized to commence work until Atmos Energy has received a signed copy of this letter.**

**This letter is only for the above-described encroachment and the work associated to install said encroachment. All other crossings of Atmos pipelines, whether indicated on the referenced drawings or future crossings, will require additional letters-of-no-objection and encroachment agreements.**

If you have any questions or if I may be of additional assistance, please feel free to contact Emily Pack, at 512-695-9024, or Garrett Harbert, at 512-316-8697.

Sincerely,

DocuSigned by:  
  
FCD62B0C71054A9...

Garrett Harbert, P.E.  
Manager of Engineering Services  
Atmos Energy Corporation  
1500 W Loop 340  
Waco, TX 76712

cc: Garrett Harbert (Atmos Engr Manager)  
Emily Pack (Atmos Engineer)  
Chris Wren (Atmos Damage Prevention)  
Stewart Hill (Atmos ROW)  
Josiah Torrez (Atmos Operations)

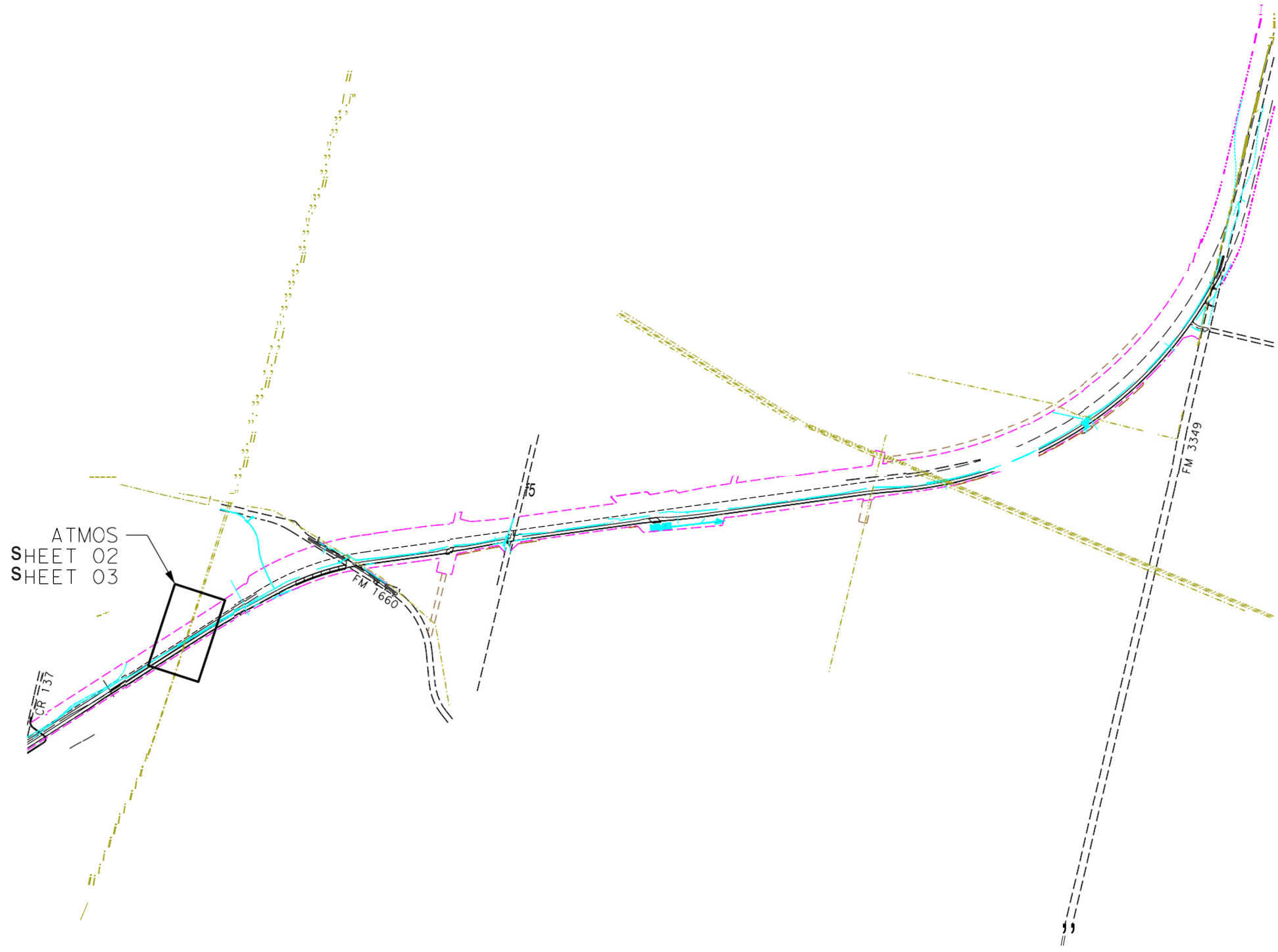
**Acknowledged by:**

Signature: \_\_\_\_\_

Name: \_\_\_\_\_

Title: \_\_\_\_\_

Date: \_\_\_\_\_



*Derrick A. Horvath*



Texas Registration No. 274  
9600 N. Mopac Expressway, Suite 800  
Austin, Texas 78759  
512.834.97981 fax 512.834.95531 www.cobbfendley.com

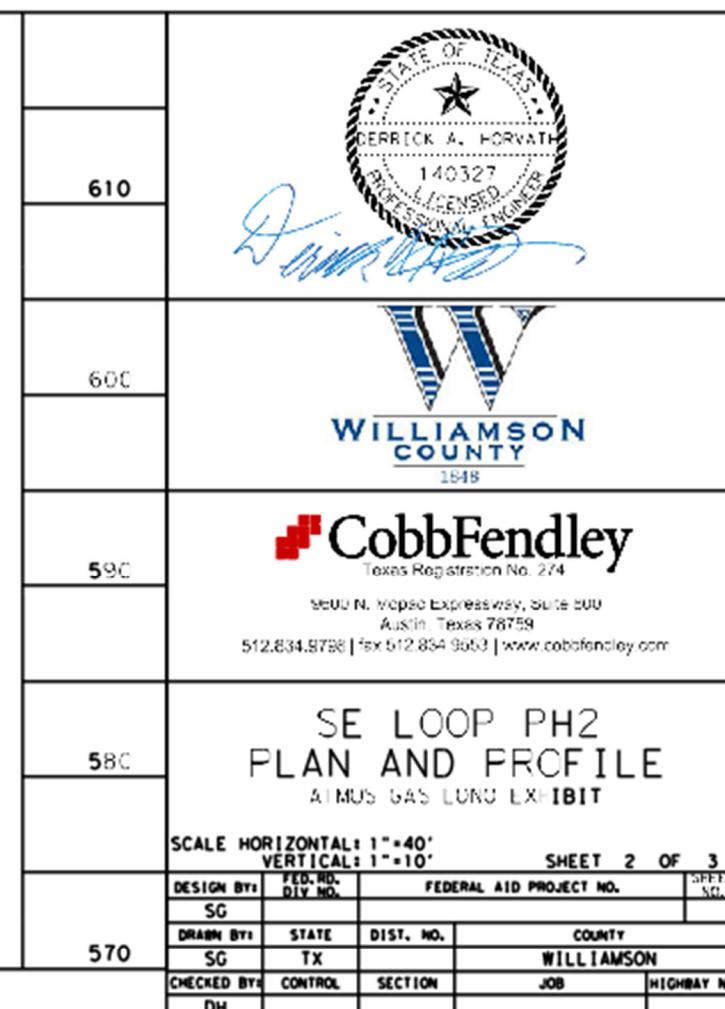
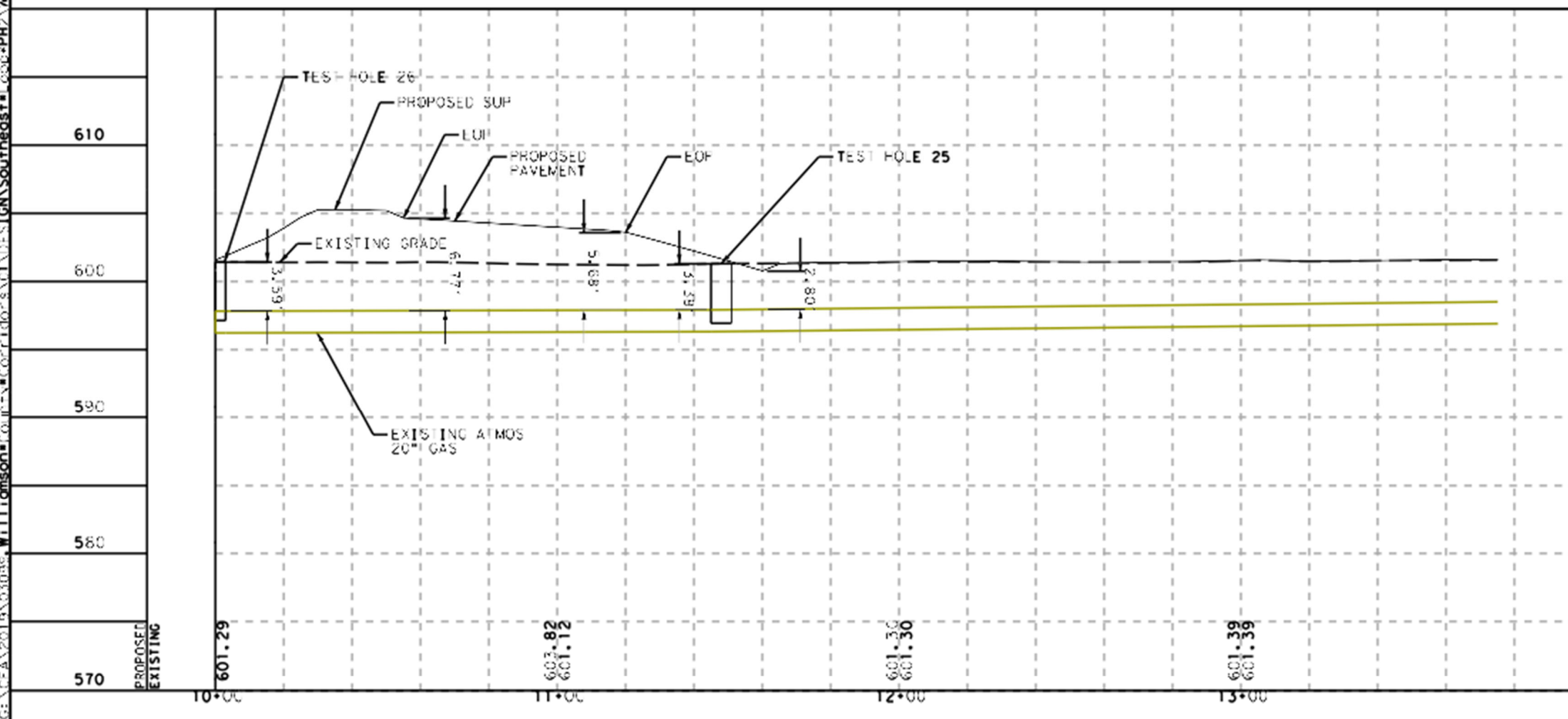
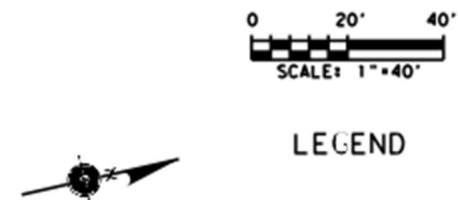
## SE LOOP PH2 PROJECT LAYOUT

ATMOS GAS LONO EXHIBIT

SCALE HORIZONTAL: 1"=40'  
VERTICAL: 1"=10' SHEET OF 3

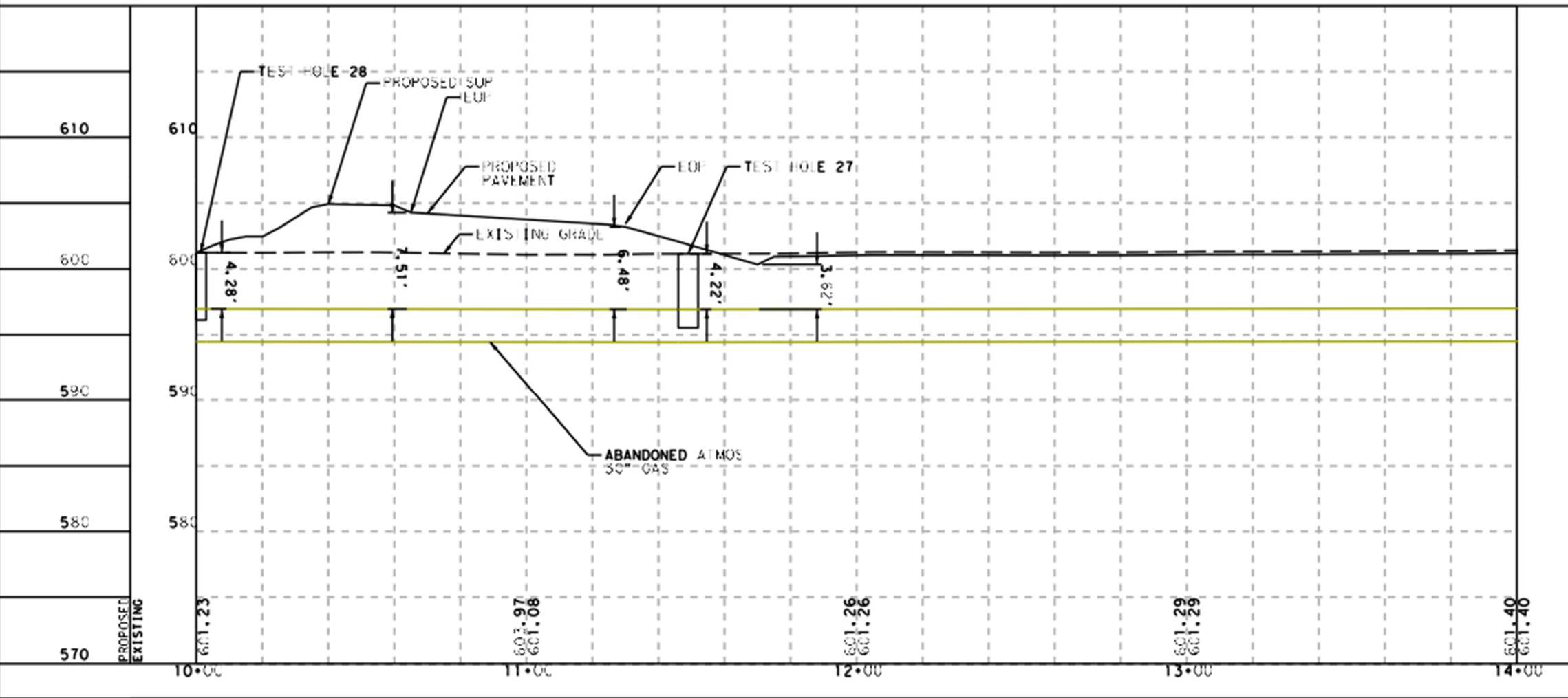
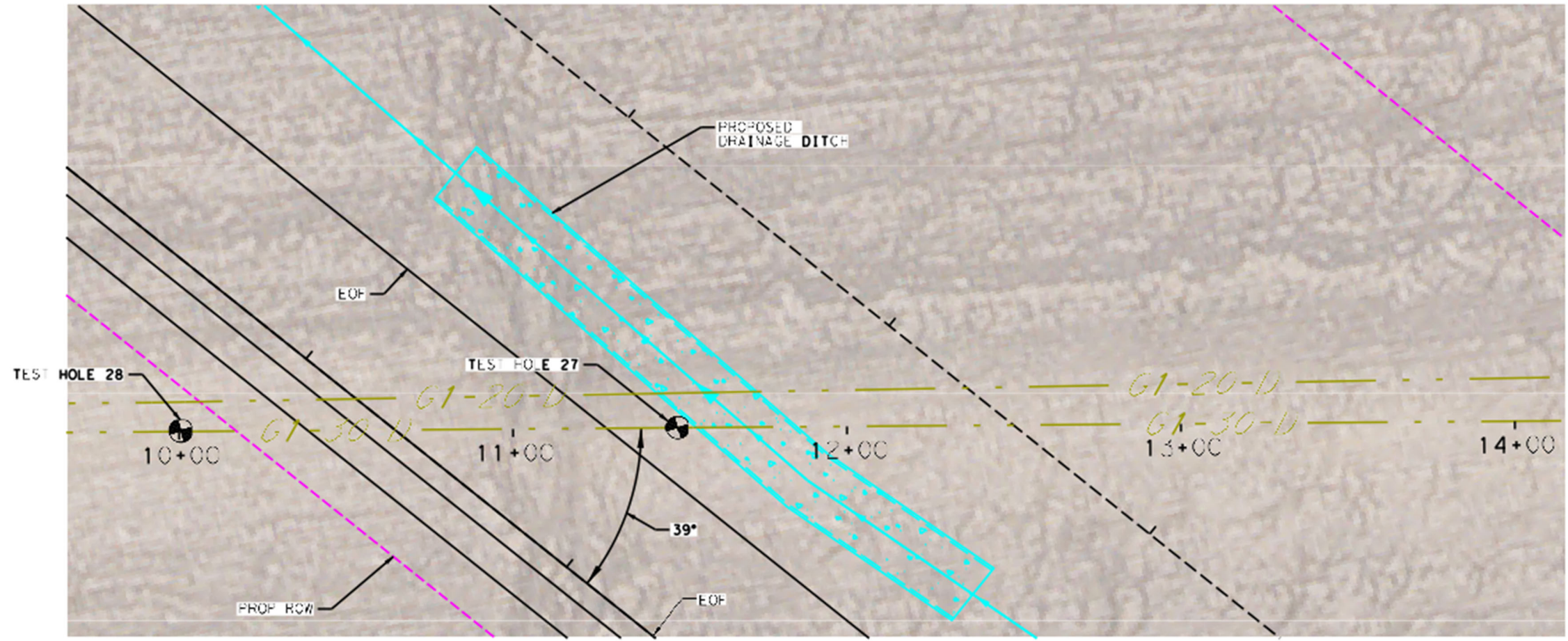
DESIGN BY, SG	FED. RD. DIV NO.	FEDERAL AID PROJECT NO.		SHEET NO.
DRAWN BY, SG	STATE TX	DIST. NO.	COUNTY WILLIAMSON	
CHECKED BY, DH	CONTROL	SECTION	JOB	HIGHWAY NO.



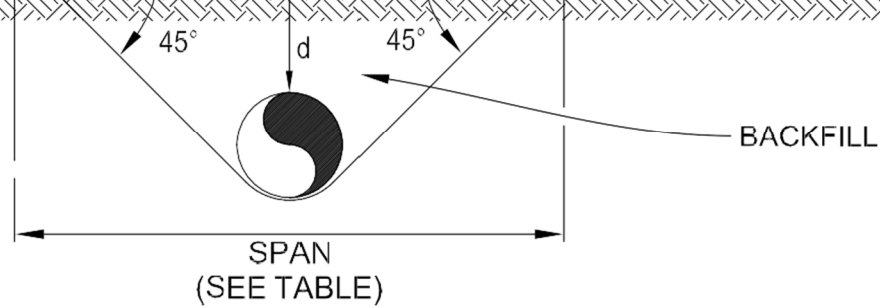




3/7/2025 4:14:21 PM G:\CEA\2019\03095.Williamson\Corridor\01\DESIGN\Southeast\Loop-01\PH2\PH2-PNE-02-01.dwg



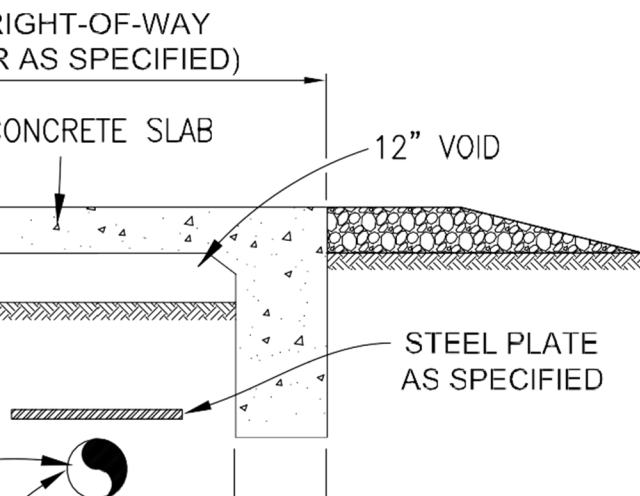
610	   5000 N. Mojos Expressway, Suite 500 Austin, Texas 78759 512.834.8788   fax 512.834.9653   www.cobbfendley.com			
600				
590				
580				
570				
SE LOOP PH2 PLAN AND PROFILE ATMOS GAS LONG EXHIBIT				
SCALE HORIZONTAL: 1"=40' VERTICAL: 1"=10'				
SHEET 3 OF 3				
DESIGN BY:	FED. RD. DIV. NO.	FEDERAL AID PROJECT NO.		SHEET NO.
SG				
DRAWN BY:	STATE	DIST. NO.	COUNTY	
SG	TX		WILLIAMSON	
CHECKED BY:	CONTROL	SECTION	JOB	HIGHWAY NO.
DH				



## ELEVATION

DEPTH (d) (FT)	SPAN (FT)
1 OR LESS	8
2	8
3	10
4	10
5 OR MORE	N/A

## OPTION 3 PERMANENT



PLACE AND COMPACT 12" THICK LAYER OF 4" MINIMUM DIAMETER CRUSHED AGGREGATE THIS AREA TO PREVENT RUTTING OF SOIL AND SHIFTING OF SLAB

## OPTION 4 PERMANENT

