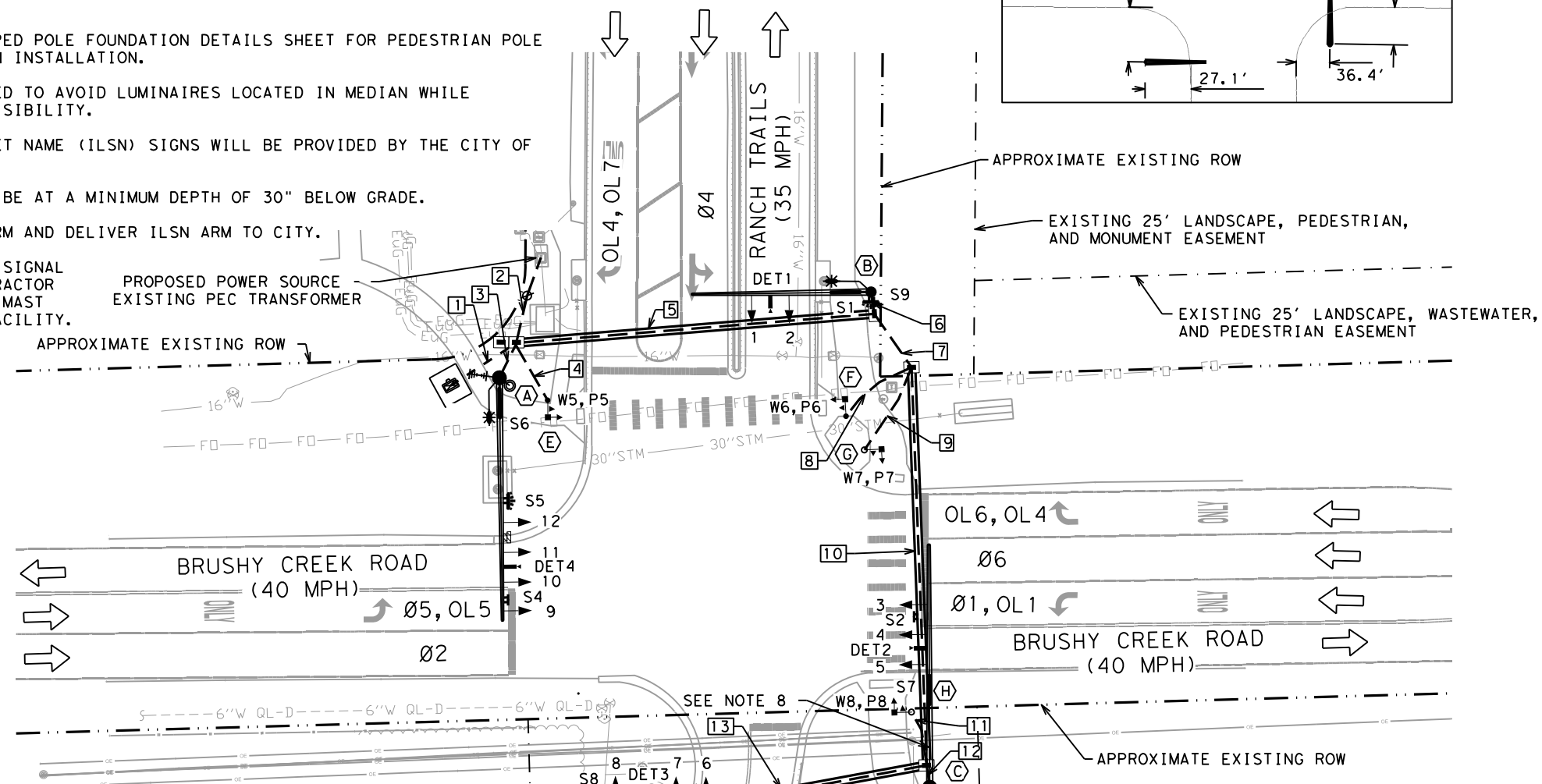
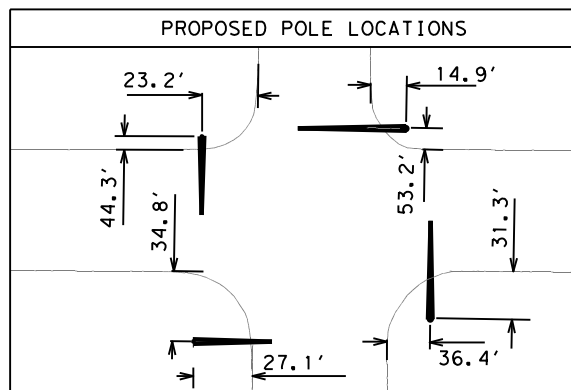


NOTES:

1. LOCATION OF EXISTING UTILITIES SHOWN ON THIS PLAN ARE APPROXIMATE. CONTRACTOR SHALL VERIFY ALL INFRASTRUCTURE AND UTILITY LOCATIONS PRIOR TO STARTING CONSTRUCTION.
2. CONTRACTOR SHALL CALL FOR LOCATES PRIOR TO EXCAVATION. IT SHOULD BE NOTED THAT TEXAS 811 MAY NOT HAVE ALL UTILITY INFORMATION FOR LOCATES. IT IS THE CONTRACTOR'S RESPONSIBILITY TO CONTACT ALL UTILITY OWNERS THAT HAVE FACILITIES IN THIS AREA FOR LOCATES.
3. CONTRACTOR TO PERFORM SUE QL-A TEST HOLES TO VERIFY ABSENCE OF UTILITIES IN AREAS REQUIRING FOUNDATION INSTALLATION AND PRIOR TO BORING ACROSS ANY UTILITY LINE.
4. SEE CITY OF CEDAR PARK PED POLE FOUNDATION DETAILS SHEET FOR PEDESTRIAN POLE PLACEMENT AND FOUNDATION INSTALLATION.
5. MAST ARMS SHALL BE ANGLED TO AVOID LUMINAIRES LOCATED IN MEDIAN WHILE MAINTAINING VEHICULAR VISIBILITY.
6. INTERNALLY LIGHTED STREET NAME (ILSN) SIGNS WILL BE PROVIDED BY THE CITY OF CEDAR PARK.
7. ALL CONDUIT BORES SHALL BE AT A MINIMUM DEPTH OF 30" BELOW GRADE.
8. INSTALL S7 BELOW MAST ARM AND DELIVER ILSN ARM TO CITY.
9. CITY TO FURNISH TRAFFIC SIGNAL POLE ASSEMBLY "A". CONTRACTOR SHALL RETRIEVE POLE AND MAST ARM FROM CITY STORAGE FACILITY.

LEGEND

- EXISTING TRAFFIC FLOW
- PROPOSED SIGNAL POLE & MAST ARM
- PROPOSED LUMINAIRE
- PROPOSED SIGNAL HEAD
- PROPOSED PEDESTAL POLE
- PROPOSED PEDESTRIAN HEAD
- PROPOSED PUSH BUTTON
- PROPOSED TY D GROUND BOX
- PROPOSED CONDUIT (BORE)
- PROPOSED CONDUIT (TRENCH)
- PROPOSED ILSN
- PROPOSED MAST ARM SIGN
- PROPOSED RADIO
- PROPOSED CCTV
- PROPOSED LED BLANK OUT SIGN
- PROPOSED HYBRID DETECTOR
- PROPOSED CONTROLLER CABINET W/BBU
- PROPOSED ELECTRICAL SERVICE
- PROPOSED ROADSIDE UNIT



TRAFFIC SIGNAL POLE NOTES (INSTALL ONLY)

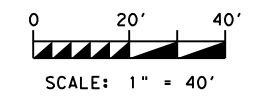
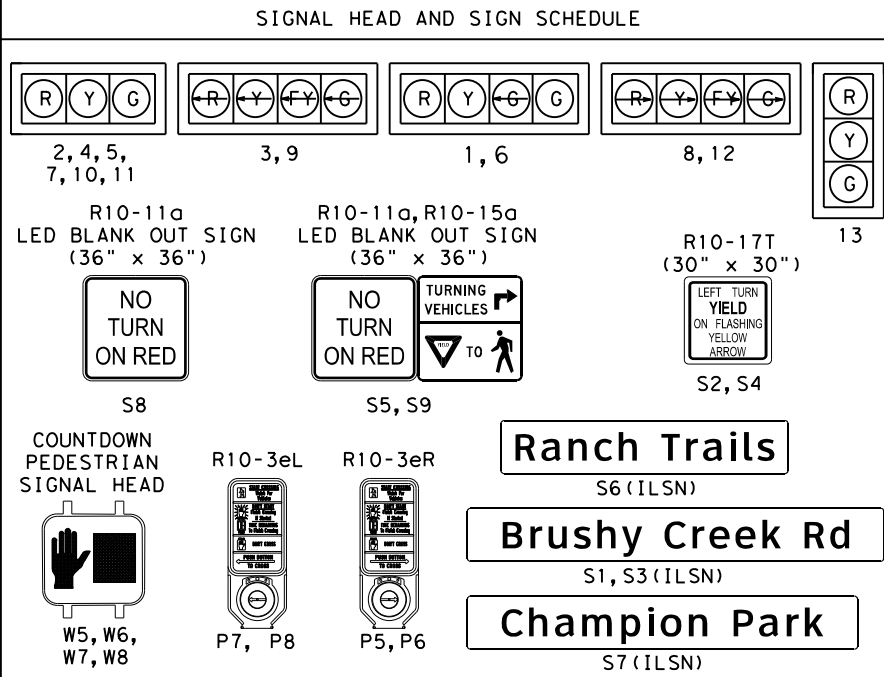
A	INS TRF SIG PL AM(S)1 ARM(65')LUM&ILSN
B	INS TRF SIG PL AM(S)1 ARM(48')LUM&ILSN
C	INS TRF SIG PL AM(S)1 ARM(65')LUM&ILSN
D	INS TRF SIG PL AM(S)1 ARM(48')LUM&ILSN

PED SIGNAL NOTES

E	F	PED POLE ASSEMBLY
G	H	EXISTING RRFB POLE

UTILITIES CONFLICT NOTES

THE PRESENCE OF UTILITIES EXIST IN THIS AREA. CONTRACTOR SHALL CALL FOR LOCATES AND POTHOLE UTILITIES/INFRASTRUCTURE, AS NECESSARY, PRIOR TO CONSTRUCTION. CONTRACTOR SHALL EXERCISE CAUTION AND COORDINATE ALL REQUIRED UTILITY/INFRASTRUCTURE ADJUSTMENTS WITH THE ENGINEER TO FACILITATE TRAFFIC SIGNAL INFRASTRUCTURE CONSTRUCTION.



450 CYPRESS CREEK ROAD  
BUILDING 1  
CEDAR PARK, TX 78613  
(512) 401-5350

285 SE Inner Loop  
Suite 110  
Georgetown, TX 78626  
(512) 485-0020  
TBPELS Firm 5713

PROPOSED SIGNAL LAYOUT  
BRUSHY CREEK ROAD  
AT RANCH TRAILS

DATE: \$DATES\$  
FILE: \$FILES\$

PROPOSED SIGNS

R10-11a, R10-15a  
LED BLANK OUT SIGN  
(36" x 36")

R10-11a  
LED BLANK OUT SIGN  
(36" x 36")

R10-17T  
(30" x 30")

NO TURN ON RED S5, S9

TURNING VEHICLES TO

LEFT TURN YIELD ON FLASHING YELLOW ARROW S2, S4

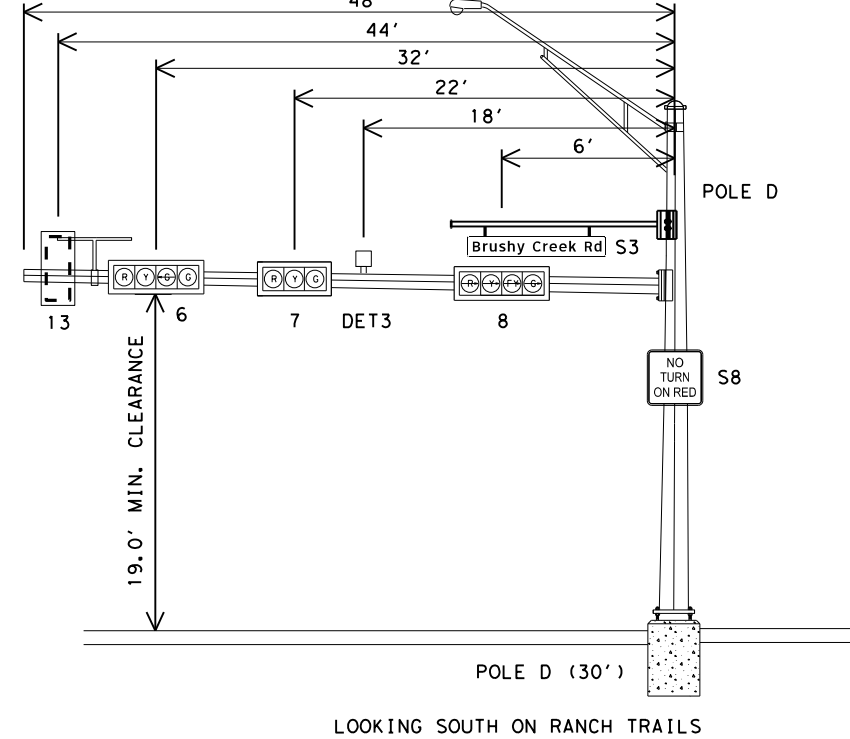
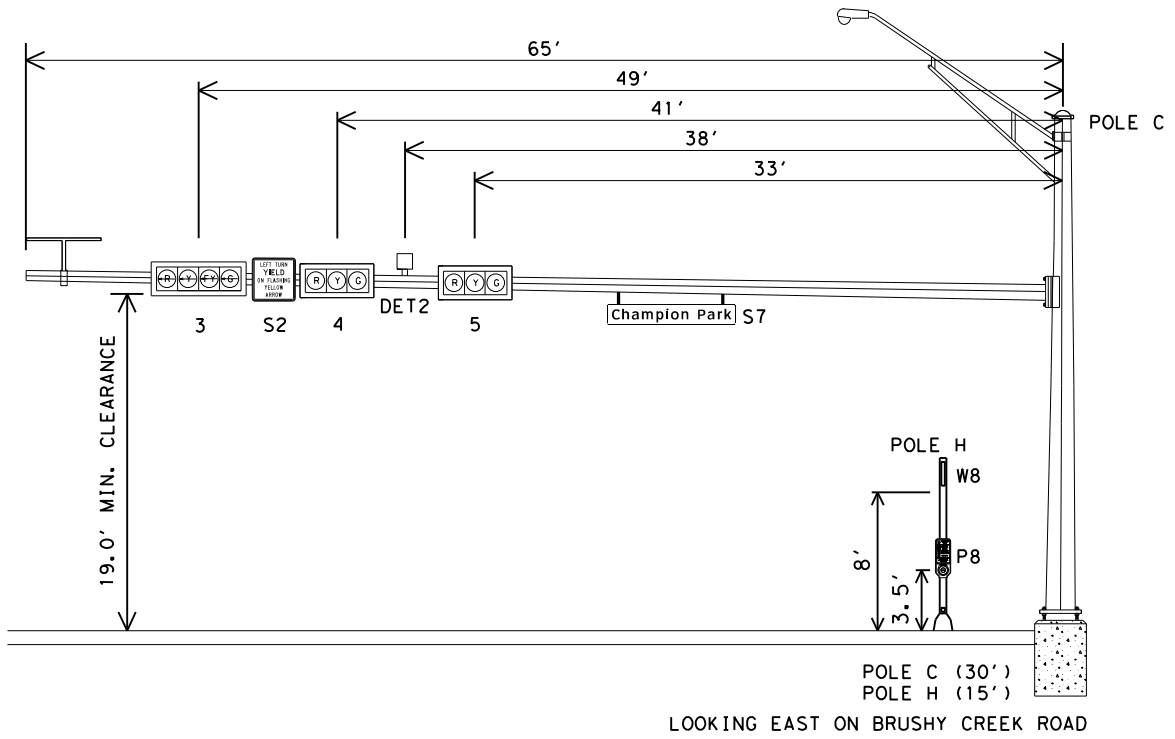
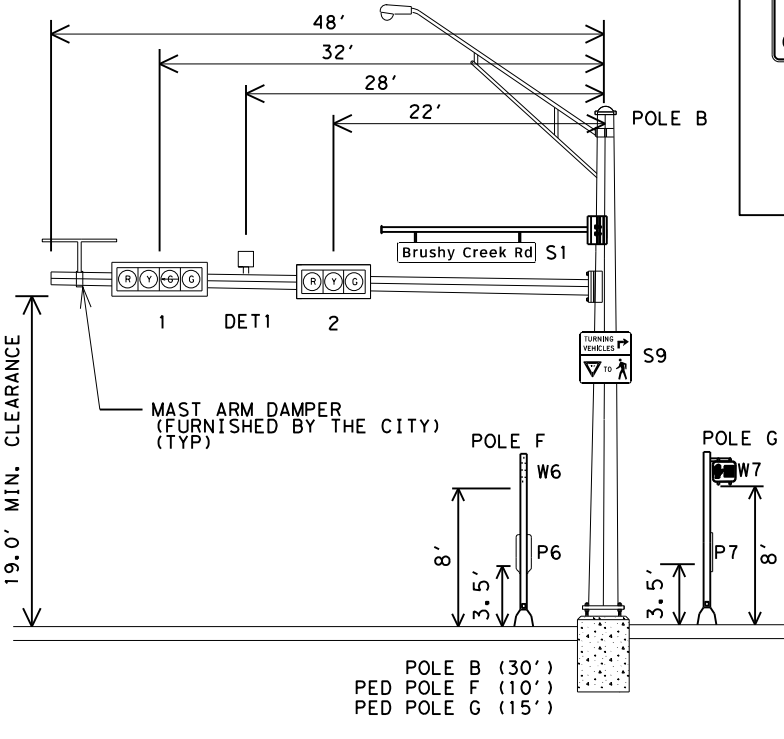
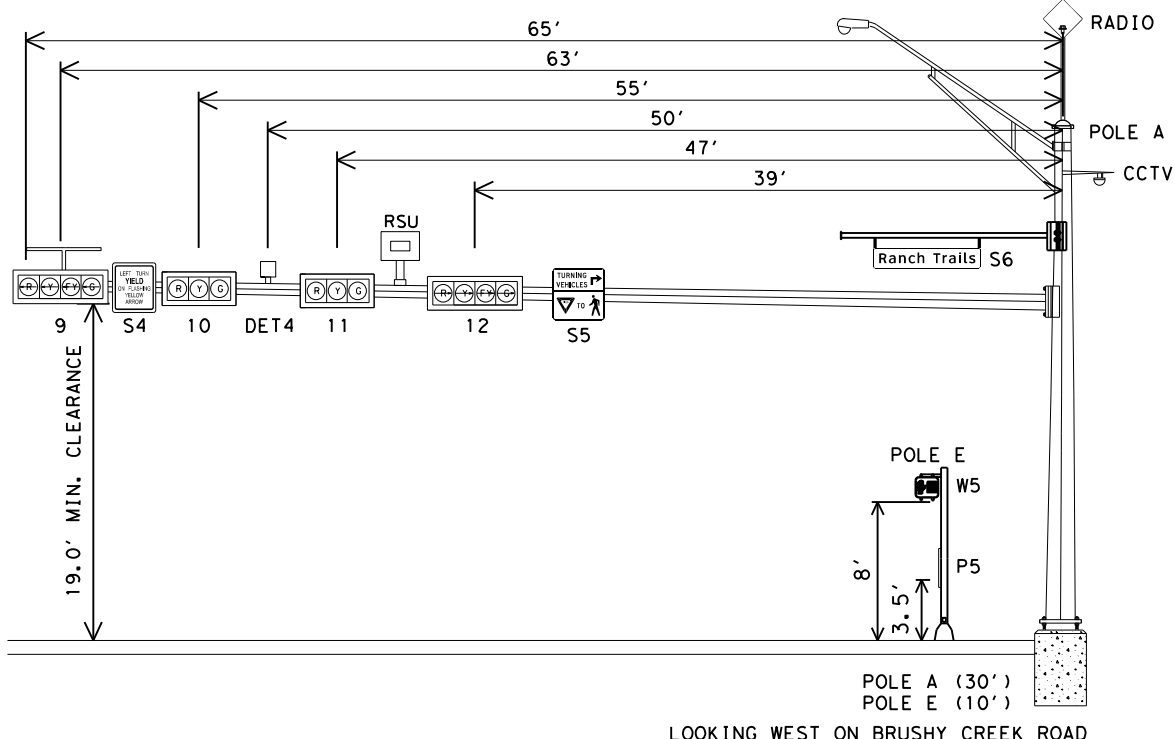
NO TURN ON RED S8

**Ranch Trails**  
S6 (ILSN)

**Brushy Creek Rd**  
S1, S3 (ILSN)

**Champion Park**  
S7 (ILSN)

- NOTES:
- CENTER HEADS OVER THE LANES OR AS DIRECTED BY ENGINEER. DISTANCES SHOWN ALONG MAST ARMS ARE APPROXIMATE AND MUST BE ADJUSTED IN THE FIELD AS NEEDED.
  - LOCATION OF MAST ARMS ARE APPROXIMATE. ANY CHANGES WILL BE APPROVED BY THE ENGINEER.
  - FOUNDATIONS WILL BE ADJUSTED IN THE FIELD IN ORDER TO MEET MINIMUM REQUIREMENTS.
  - RADAR LOCATIONS ARE APPROXIMATE. INSTALL AS DIRECTED BY MANUFACTURER AND/OR ENGINEER TO OBTAIN OPTIMAL DETECTION IN THE FIELD. DETECTION SENSORS, LUMINAIRES, PTZ CAMERA, RADIO, AND C-V2X RSU ARE SHOWN DIAGRAMMATICALLY. ADJUST POSITION AND ORIENTATION PER THE CITY'S INSTRUCTION IN THE FIELD. DETECTION SENSOR ORIENTATION AND POSITION IS ALSO SUBJECT TO MANUFACTURER'S FIELD RECOMMENDATIONS. THESE ADJUSTMENTS ARE SUBSIDIARY.
  - INTERNALLY ILLUMINATED STREET NAME (ILSN) SIGNS WILL BE PROVIDED BY THE CITY OF CEDAR PARK.



DATE: \$DATE\$  
FILE: \$FILE\$

SCALE: N. T. S.

STATE OF TEXAS  
CLAIRE E. MCKINNEY  
130052  
LICENSED PROFESSIONAL ENGINEER  
02/02/2026

CEDAR PARK  
450 CYPRESS CREEK ROAD  
BUILDING 1  
CEDAR PARK, TX 78613  
(512) 401-5350

GARVER  
285 SE Inner Loop  
Suite 110  
Georgetown, TX 78626  
(512) 485-0020  
TBPELS Firm 5713

SIGNAL ELEVATION  
BRUSHY CREEK ROAD  
AT RANCH TRAILS

SHEET 1 OF 1

COUNTY	STATE	SHEET NUMBER
		27