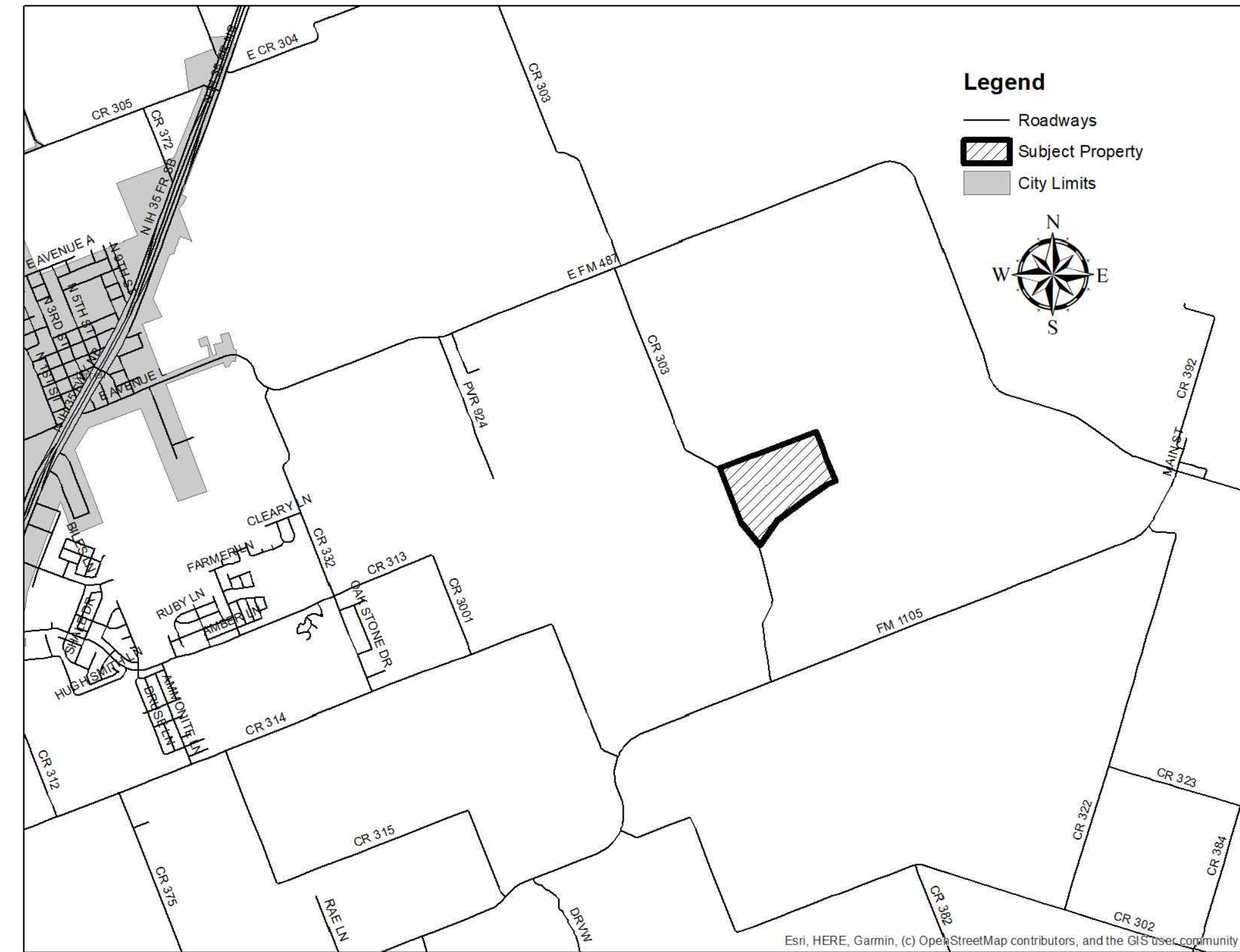


PRELIMINARY PLAT KENDALL CROSSING WILLIAMSON COUNTY, TEXAS



VICINITY MAP
N.T.S

Sheet List Table	
Sheet Number	Sheet Title
--	COVER PRELIM
1	PRELIMINARY PLAT 1 - NOTES AND SIGNATURES
2	PRELIMINARY PLAT 2 - OVERALL AND PHASING
3	PRELIMINARY PLAT 3 - CURVES
4	PRELIMINARY PLAT 4
5	PRELIMINARY PLAT 5
6	PRELIMINARY PLAT 6
7	PRELIMINARY PLAT 7
8	WATER LAYOUT
9	SEWER LAYOUT
10	MAILBOX LAYOUT



YALGO ENGINEERING, LLC

109 W 2ND STREET, SUITE 201

GEORGETOWN, TX. 78626 (254) 953-5353

Texas Registered Engineering Firm F-24040

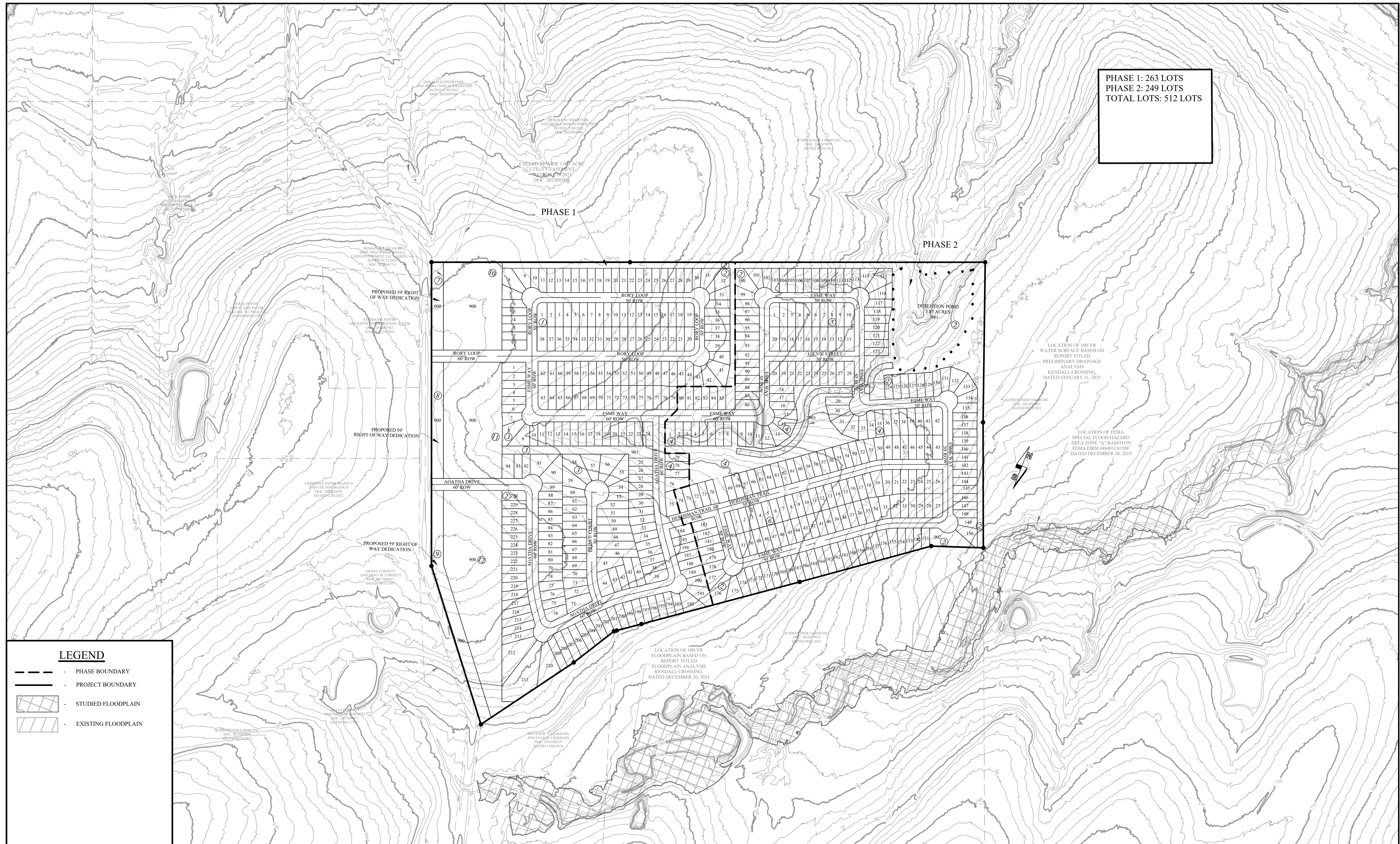
Texas Registered Surveying Firm 10194797

THIS DOCUMENT IS RELEASED FOR THE PURPOSE OF REVIEW UNDER THE AUTHORITY OF KEITH A. CALDWELL, P.E. 101956 ON 11/25/2025. IT IS NOT TO BE USED FOR CONSTRUCTION PURPOSES.

KENDALL CROSSING

November 2025

PHASE 1: 263 LOTS
 PHASE 2: 249 LOTS
 TOTAL LOTS: 512 LOTS



LEGEND

- PHASE BOUNDARY
- PROJECT BOUNDARY
- STUDIED FLOODPLAIN
- EXISTING FLOODPLAIN

REV.	DESCRIPTION	DATE	BY	PROJECT INFORMATION	BENCHMARK	GRAPHIC SCALE	OWNER INFORMATION	SURVEYOR INFORMATION	ENGINEER INFORMATION	Yalgo Engineering, LLC 109 W 2nd Street, Suite 201 Georgetown, TX 78626 PH (254) 953-5353 FX (254) 953-5057 Texas Registered Engineering Firm # F-24040 Texas Registered Surveying Firm # 10194797
				TOTAL SIZE: 108.66 Acres TOTAL BLOCKS: 6 TOTAL LOTS: 512 TOTAL TRACTS: 11	Cotton spindle set in the approximate center of pavement of County Road 303, bearing S 05°29'28" E, 342.98 feet from the most southerly corner of Tract D, Kendall Crossing subdivision. Observed GPS coordinates based on Texas State Plane Coordinate System of 1983, Central Zone (4203) N: 1029225.65 E: 3170444.69 Z: 778.72' (NAVD88-Goid18)	0 200' 400' 600' 0 1" 2" 3" IN FEET	BWB SINGLE LAND INVESTMENT, LLC SERIES 149 109 W. 2nd Street, Suite 201 Georgetown, TX 78626 254-953-5353 pshpherd@bwbdevelopment.com	COREY SHANNON R.P.L.S. NO. 5967 YALGO ENGINEERING 109 W 2nd Street, Suite 201 Georgetown, TX 78626	KEITH A. CALDWELL, P.E. 101956 YALGO ENGINEERING 109 W 2nd Street, Suite 201 Georgetown, TX 78626	
PROJECT NUMBER: KC00 CHECKED BY: JML APPROVED BY: KAC AUTHORIZED BY: WBW		CLIENT NAME: WBW DEVELOPMENT SERVICES - SERIES 059 CLIENT LOCATION: GEORGETOWN, TX								

PRINTED ON November 25, 2025

SHEET 2 OF 10

PRELIMINARY PLAT 2 - OVERALL AND PHASING
 KENDALL CROSSING
 WILLIAMSON COUNTY, TEXAS

CURVE TABLE					
CURVE	RADIUS	ARC LENGTH	CHORD LENGTH	DELTA ANGLE	
C1	15.00	1.24	1.24	S23°43'08"E	004°43'18"
C2	15.00	12.38	12.03	S49°43'44"E	047°17'54"
C3	50.00	35.33	34.60	S53°08'17"E	040°28'49"
C4	50.00	31.07	30.57	S15°05'50"E	035°36'04"
C5	50.00	26.99	26.67	S18°10'09"W	030°55'55"
C6	50.00	24.42	24.17	S47°37'30"W	027°58'45"
C7	50.00	43.36	42.02	S86°27'31"W	049°41'17"
C8	50.00	8.17	8.16	N64°01'03"W	009°21'34"
C9	15.00	13.62	13.16	N85°20'52"W	052°01'12"
C10	50.00	78.54	70.71	S23°38'31"W	090°00'00"
C11	25.00	39.27	35.36	S23°38'31"W	090°00'00"
C12	15.00	13.62	13.16	S42°37'55"W	052°01'12"
C13	50.00	5.02	5.02	S19°29'58"W	005°45'18"
C14	50.00	43.68	42.30	S47°24'08"W	050°03'02"
C15	50.00	29.07	28.67	S89°05'10"W	033°19'01"
C16	50.00	26.99	26.67	N88°47'22"W	030°55'55"
C17	50.00	30.97	30.47	N25°34'50"W	035°29'08"
C18	50.00	33.60	32.97	N11°24'44"E	038°30'00"
C19	15.00	13.62	13.16	N04°39'08"E	052°01'12"
C20	50.00	78.54	70.71	N66°21'29"W	090°00'00"
C21	25.00	39.27	35.36	N66°21'29"W	090°00'00"
C22	15.00	13.62	13.16	N47°22'05"W	052°01'12"
C23	50.00	21.15	20.99	N61°15'44"W	024°13'53"
C24	25.00	39.27	35.36	N23°38'31"E	090°00'00"
C25	50.00	78.54	70.71	N23°38'31"E	090°00'00"
C26	50.00	38.92	37.94	N26°50'55"W	044°35'45"
C27	50.00	30.47	30.00	N12°54'25"E	034°54'55"
C28	50.00	26.30	26.00	N45°26'05"E	030°08'24"
C29	50.00	39.29	38.29	N83°00'56"E	045°01'18"
C30	50.00	13.21	13.17	S66°54'21"E	015°08'09"
C31	15.00	13.62	13.16	S85°20'52"E	052°01'12"
C32	15.00	12.09	11.77	N01°44'08"W	046°11'13"
C33	50.00	25.07	24.81	S10°27'57"W	028°43'35"
C34	50.00	32.16	31.61	S22°19'27"E	036°51'13"
C35	25.00	39.27	35.36	N66°21'29"W	090°00'00"
C36	50.00	78.54	70.71	N66°21'29"W	090°00'00"
C37	50.00	26.99	26.67	S56°13'01"E	030°55'55"
C38	50.00	23.69	23.47	S85°15'20"E	027°08'41"
C39	50.00	42.06	40.83	N57°04'28"E	048°11'43"
C40	50.00	9.18	9.17	N27°42'57"E	010°31'18"
C41	15.00	12.09	11.77	N45°32'55"E	046°11'13"
C42	15.00	12.09	11.77	N88°15'52"W	046°11'13"
C43	50.00	78.54	70.71	S23°38'31"W	090°00'00"
C44	50.00	27.98	27.61	S81°12'01"E	032°03'31"
C45	50.00	30.80	30.32	N65°07'15"E	035°17'56"
C46	50.00	26.31	26.01	N32°23'53"E	030°08'49"
C47	50.00	26.99	26.67	N01°51'30"E	030°55'55"
C48	50.00	38.94	37.96	N35°55'04"W	044°37'13"
C49	50.00	13.22	13.18	S65°48'11"E	015°09'01"
C50	15.00	13.62	13.16	N47°22'05"W	052°01'12"
C51	25.00	39.27	35.36	S23°38'31"W	090°00'00"
C52	15.00	1.24	1.24	S23°43'08"E	004°43'18"
C53	15.00	12.38	12.03	S49°43'44"E	047°17'54"
C54	50.00	35.33	34.60	S53°08'17"E	040°28'49"
C55	50.00	30.37	29.91	S15°29'30"E	034°48'24"
C56	50.00	26.99	26.67	S17°22'40"W	030°55'55"
C57	50.00	78.54	70.71	S23°38'31"W	090°00'00"
C58	50.00	26.99	26.67	S48°18'35"W	030°55'55"

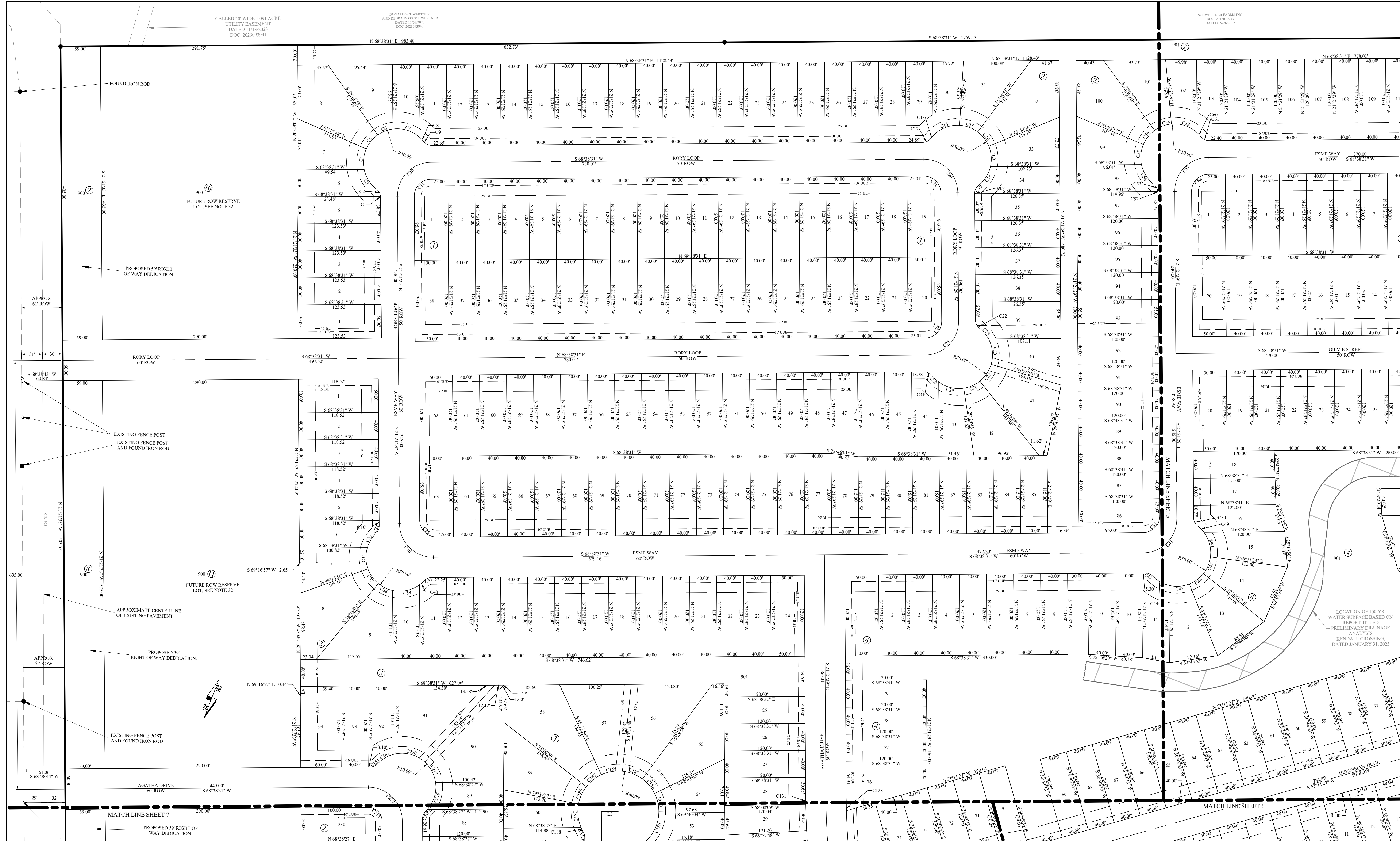
CURVE TABLE					
CURVE	RADIUS	ARC LENGTH	CHORD LENGTH	DELTA ANGLE	
C59	50.00	41.14	39.99	S87°20'49"W	047°08'33"
C60	50.00	8.50	8.49	N64°12'35"W	009°44'38"
C61	15.00	13.62	13.16	N85°20'52"W	052°01'12"
C62	25.00	39.27	35.36	N23°38'31"E	090°00'00"
C63	15.00	13.62	13.16	S42°37'55"W	052°01'12"
C64	50.00	4.68	4.68	S19°18'08"W	005°21'39"
C65	50.00	44.36	42.92	S47°23'50"W	050°49'45"
C66	50.00	25.78	25.49	S87°34'56"W	029°32'26"
C67	50.00	26.99	26.67	N62°10'53"W	030°55'55"
C68	50.00	29.44	29.02	N29°50'50"W	033°44'10"
C69	50.00	38.08	37.17	N08°50'29"E	043°38'30"
C70	15.00	9.62	9.46	N12°17'03"E	036°45'21"
C71	15.00	4.00	3.98	N13°43'33"W	015°15'52"
C72	50.00	78.54	70.71	N66°21'29"W	090°00'00"
C73	25.00	39.27	35.36	S66°21'29"E	090°00'00"
C74	1000.00	179.31	179.07	S26°29'41"E	010°16'25"
C75	15.00	6.13	6.09	N18°57'43"E	023°25'22"
C76	50.00	41.34	40.17	N06°59'12"E	047°22'25"
C77	50.00	28.35	27.97	N32°56'36"W	032°29'11"
C78	50.00	26.30	26.00	N64°15'24"W	030°08'24"
C79	50.00	26.30	26.00	S85°34'21"W	030°08'24"
C80	1030.00	39.05	39.05	S25°07'23"E	002°10'21"
C81	50.00	42.49	41.22	S46°11'19"W	048°41'20"
C82	50.00	7.46	7.45	S17°34'21"W	008°32'35"
C83	15.00	13.62	13.16	S39°18'40"W	052°01'12"
C84	50.00	81.44	72.73	N68°01'06"W	093°19'15"
C85	1030.00	39.05	39.05	S27°17'44"E	002°10'21"
C86	15.00	13.62	13.16	S39°18'40"W	052°01'12"
C87	50.00	15.24	15.18	S22°01'59"W	017°27'50"
C88	50.00	37.93	37.03	S52°29'56"W	043°28'03"
C89	50.00	26.82	26.50	S89°35'58"W	030°44'02"
C90	50.00	26.99	26.67	S99°34'03"W	030°55'55"
C91	50.00	30.66	30.19	N26°31'54"W	035°08'22"
C92	50.00	34.48	33.80	N10°47'33"E	039°30'33"
C93	15.00	13.62	13.16	N04°32'13"E	052°01'12"
C94	50.00	81.34	72.66	N68°04'33"W	093°12'21"
C95	25.00	40.67	36.33	N68°04'33"W	093°12'21"
C96	375.00	22.30	22.30	N66°49'02"E	003°24'26"
C97	375.00	37.52	37.50	N62°14'52"E	005°43'55"
C98	325.00	39.93	39.90	N65°00'06"E	007°02'19"
C99	350.00	93.65	93.37	S60°51'21"W	015°19'49"
C100	375.00	37.32	37.30	N56°31'52"E	005°42'05"
C101	375.00	3.20	3.20	N53°26'08"E	000°29'23"
C102	325.00	47.03	46.99	N57°20'11"E	008°17'30"
C103	15.00	13.62	13.16	N47°28'59"W	052°01'12"
C104	50.00	18.99	18.88	N62°36'46"W	021°45'39"
C105	50.00	36.27	35.48	N30°57'05"W	041°33'41"
C106	50.00	26.99	26.67	N05°17'43"E	030°55'55"
C107	50.00	87.07	76.48	S70°39'04"W	099°46'48"
C108	15.00	13.62	13.16	N85°28'08"W	052°01'12"
C109	50.00	78.53	70.71	N23°31'26"E	089°59'38"
C110	25.00	39.27	35.35	S23°31'26"W	089°59'38"
C111	50.00	78.87	70.94	S81°37'10"E	090°22'46"
C112	325.00	55.07	55.00	S63°40'00"W	009°42'30"
C113	325.00	31.89	31.88	S56°00'06"W	005°37'19"
C114	350.00	93.65	93.37	N60°51'21"E	015°19'49"
C115	375.00	28.76	28.76	S66°19'25"W	004°23'40"
C116	375.00	44.56	44.53	S60°43'21"W	006°48'28"

CURVE TABLE					
CURVE	RADIUS	ARC LENGTH	CHORD LENGTH	DELTA ANGLE	
C117	375.00	27.02	27.01	S55°19'17"W	004°07'40"
C118	15.00	0.90	0.90	S51°28'05"W	003°26'43"
C119	15.00	12.72	12.34	S25°27'29"W	048°34'29"
C120	50.00	42.22	40.97	S25°21'31"W	048°22'35"
C121	50.00	26.99	26.67	S65°00'46"W	030°55'55"
C122	50.00	26.99	26.67	N84°03'18"W	030°55'55"
C123	50.00	26.46	26.15	N53°25'48"W	030°19'05"
C124	50.00	47.00	45.29	N11°20'25"W	053°51'41"
C125	15.00	8.25	8.15	N20°40'17"W	031°31'01"
C126	15.00	8.25	8.15	N20°40'17"W	031°31'01"
C127	25.00	39.44	35.47	N81°37'10"W	090°22'46"
C128	970.00	18.81	18.81	S21°54'49"E	001°06'41"
C129	970.00	122.22	122.14	S26°04'44"E	006°13'09"
C130	1030.00	39.05	39.05	S22°57'02"E	002°10'21"
C131	1030.00	9.10	9.10	S21°36'40"E	000°30'23"
C132	1030.00	39.05	39.05	N31°38'25"W	002°10'21"
C133	1030.00	39.05	39.05	S33°48'46"E	002°10'21"
C134	1000.00	83.74	83.72	S34°43'24"E	004°47'54"
C135	1030.00	39.05	39.05	S29°28'04"E	002°10'21"
C136	1030.00	27.52	27.52	S33°39'52"E	001°31'50"
C137	970.00	49.94	49.93	S34°43'24"E	002°56'59"
C138	970.00	3.92	3.92	S36°18'50"E	000°13'54"
C139	15.00	12.09	11.77	S59°31'24"E	046°11'13"
C140	50.00	29.18	28.77	S65°53'54"E	033°26'12"
C141	50.00	30.74	30.25	S31°34'10"E	035°13'17"
C142	50.00	30.74	30.25	S31°34'10"E	035°13'17"
C143	50.00	26.99	26.67	S01°30'26"W	030°55'55"
C144	50.00	34.63	33.94	S36°48'57"W	039°41'05"
C145	50.00	39.37	38.36	S79°12'55"W	045°06'51"
C146	15.00	5.95	5.91	N89°39'54"W	022°44'30"
C147	15.00	6.14	6.10	S67°18'29"W	025°26'43"
C148	50.00	80.30	71.94	S09°34'40"W	092°00'55"
C149	25.00	40.19	35.97	S09°34'40"W	092°00'55"
C150	1030.00	13.09	13.09	S55°13'17"W	000°43'41"
C151	15.00	12.09	11.77	S45°32'55"W	046°11'13"
C152	1030.00	39.05	39.05	S53°46'13"W	002°10'21"
C153	1030.00	39.05	39.05	S51°35'55"W	002°10'21"
C154	1030.00	67.37	67.36	S48°38'19"W	003°44'51"
C155	970.00	21.44	21.43	S54°57'09"W	001°15'58"
C156	970.00	44.35	44.34	S53°00'35"W	002°37'10"
C157	970.00	44.35	44.34	S50°23'25"W	002°37'10"
C158	1000.00	180.45	180.20	S50°24'58"W	010°20'20"
C159	970.00	44.35	44.34	S47°46'14"W	002°37'10"
C160	970.00	44.35	44.34	N45°09'04"E	002°37'10"
C161	970.00	44.93	44.92	S42°30'53"W	002°39'14"
C162	1000.00	79.15	79.13	S42°58'45"W	004°32'07"
C163	970.00	8.06	8.06	S40°56'59"W	000°28'34"
C164	1030.00	9.48	9.48	S40°58'31"W	000°31'39"
C165	50.00	30.24	29.78	S39°46'46"W	034°38'55"
C166	1030.00	38.89	38.88	S42°19'14"W	002°09'47"
C167	1030.00	6.34	6.34	S43°34'43"W	000°21'11"
C168	15.00	7.56	7.48	S29°19'30"W	028°51'37"
C169	1000.00	53.12	53.12	S42°14'00"W	003°02'37"
C170	1030.00	58.68	58.67	S42°20'37"W	003°15'52"
C171	375.00	21.44	21.44		

CALLED 20' WIDE 1.091 ACRE
UTILITY EASEMENT
DATED 11/13/2023
DOC. 2023093941

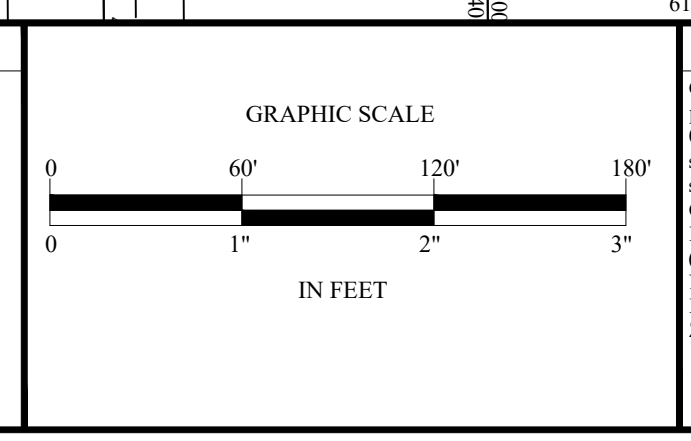
DONALD SCHWERTNER
AND DEBRA BOSS SCHWERTNER
DATED 11/09/2023
DOC. 2023093940

SCHWERTNER FARMS INC
DOC. 2023093943
DATED 09/26/2023



REV.	DESCRIPTION	DATE	BY

PROJECT INFORMATION	
TOTAL SIZE:	108.66 Acres
TOTAL BLOCKS:	6
TOTAL RESIDENTIAL LOTS:	512
TOTAL NON-RESIDENTIAL LOTS:	11



PRELIMINARY PLAT 4 KENDALL CROSSING WILLIAMSON COUNTY, TEXAS

OWNER INFORMATION	
WBW SINGLE LAND INVESTMENT, LLC	SERIES 149
109 W. 2nd Street, Suite 201	Georgetown, TX 78626
254-953-5353	
pshpehrd@wbwdevelopment.com	

SURVEYOR INFORMATION	
COREY SHANNON	R.P.L.S. NO. 5967
YALGO ENGINEERING	109 W. 2nd Street, Suite 201
	Georgetown, TX 78626

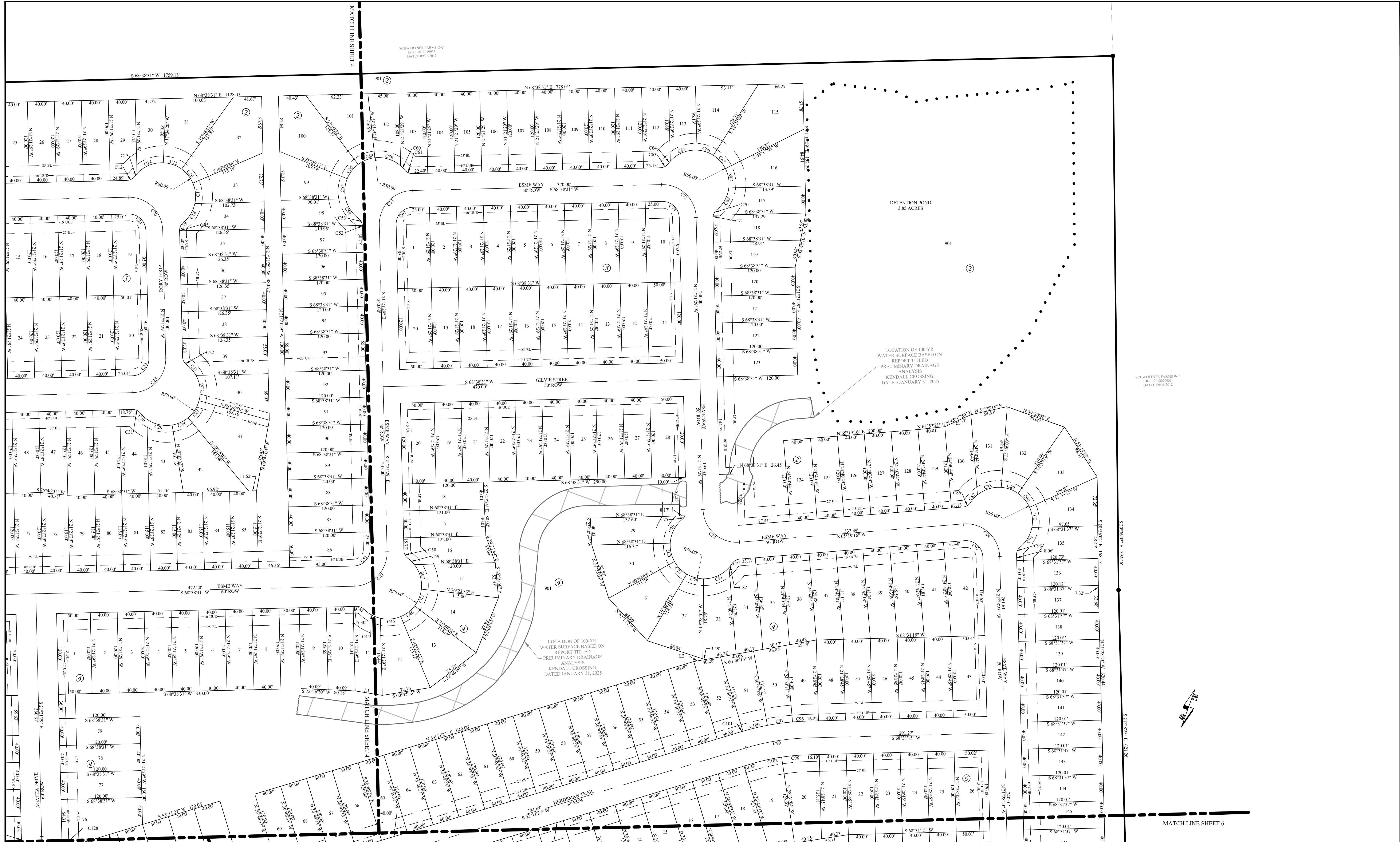
ENGINEER INFORMATION	
KEITH A. CALDWELL, P.E.	101956
YALGO ENGINEERING	109 W. 2nd Street, Suite 201
	Georgetown, TX 78626

Yalgo Engineering, LLC
109 W. 2nd Street, Suite 201
Georgetown, TX 78626
PH (254) 953-5353
FX (254) 953-5057

Texas Registered Engineering Firm # F-24040
Texas Registered Surveying Firm # 10194797

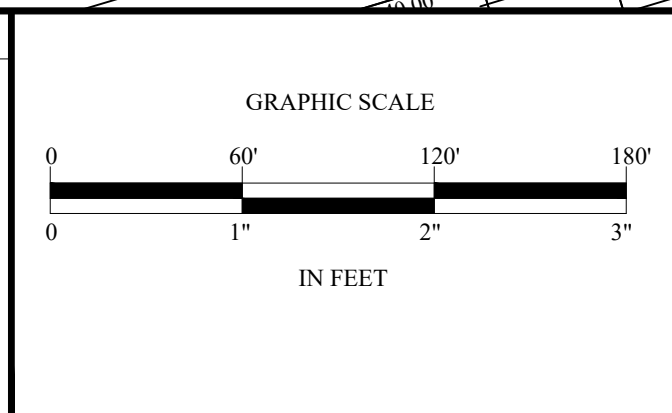
PRINTED ON November 25, 2025

SHEET 4 OF 10



REV.	DESCRIPTION	DATE	BY

PROJECT INFORMATION	
TOTAL SIZE:	108.66 Acres
TOTAL BLOCKS:	6
TOTAL RESIDENTIAL LOTS:	512
TOTAL NON-RESIDENTIAL LOTS:	11



BENCHMARK
 Cotton spindle set in the approximate center of pavement of County Road 303, bearing S 85°20'28" E, 242.98 feet from the main southerly corner of Tract D, Kendall Crossing subdivision.
 Observed GPS coordinates based on Texas State Plane Coordinate System of 1983, Central Zone (4203)
 N: 10269225.65
 E: 3178444.69
 Z: 778.72' (NAVD88-Geoid18)

PRELIMINARY PLAT 5 KENDALL CROSSING WILLIAMSON COUNTY, TEXAS

OWNER INFORMATION
WBW SINGLE LAND INVESTMENT, LLC SERIES 149 109 W. 2nd Street, Suite 201 Georgetown, TX 78626 254-953-5353 pshepherd@wbwdevelopment.com

SURVEYOR INFORMATION
COREY SHANNON R.P.L. NO. 5967 YALGO ENGINEERING 109 W. 2nd Street, Suite 201 Georgetown, TX 78626 PH (254) 953-5353 FX (254) 953-5057

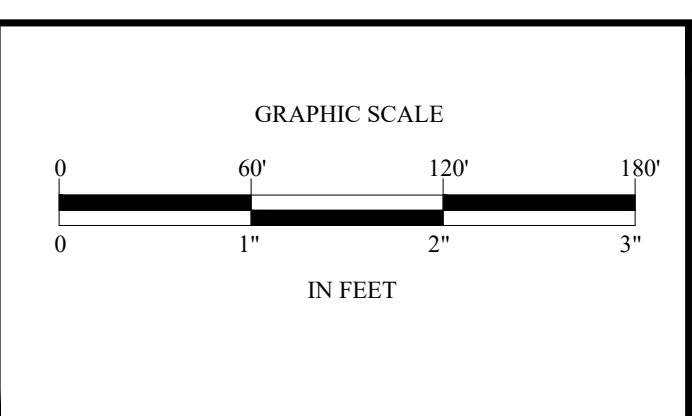
ENGINEER INFORMATION
KEITH A. CALDWELL, P.E. 101956 YALGO ENGINEERING 109 W. 2nd Street, Suite 201 Georgetown, TX 78626 PH (254) 953-5353 FX (254) 953-5057

Yalgo Engineering, LLC
 109 W. 2nd Street, Suite 201
 Georgetown, TX 78626
 PH (254) 953-5353
 FX (254) 953-5057
 Texas Registered Engineering Firm # F-24040
 Texas Registered Surveying Firm # 10194797



REV.	DESCRIPTION	DATE	BY

PROJECT INFORMATION
TOTAL SIZE: 108.66 Acres
TOTAL BLOCKS: 6
TOTAL RESIDENTIAL LOTS: 512
TOTAL NON-RESIDENTIAL LOTS: 11



BENCHMARK
 Cotton spindle set in the approximate center of pavement of County Road 303, bearing S 05°20'34" E, 242.96 feet from the most southerly corner of Tract D, Kendall Crossing subdivision.
 Observed GPS coordinates based on Texas State Plane Coordinate System of 1983, Central Zone (4203)
 N: 10260223.65
 E: 3170444.69
 Z: 778.72 (NAVD88-Geoid18)

PRELIMINARY PLAT 6 KENDALL CROSSING WILLIAMSON COUNTY, TEXAS

OWNER INFORMATION
WBW SINGLE LAND INVESTMENT, LLC - SERIES 149 109 W. 2nd Street, Suite 201 Georgetown, TX 78626 pshepherd@wbwdevelopment.com

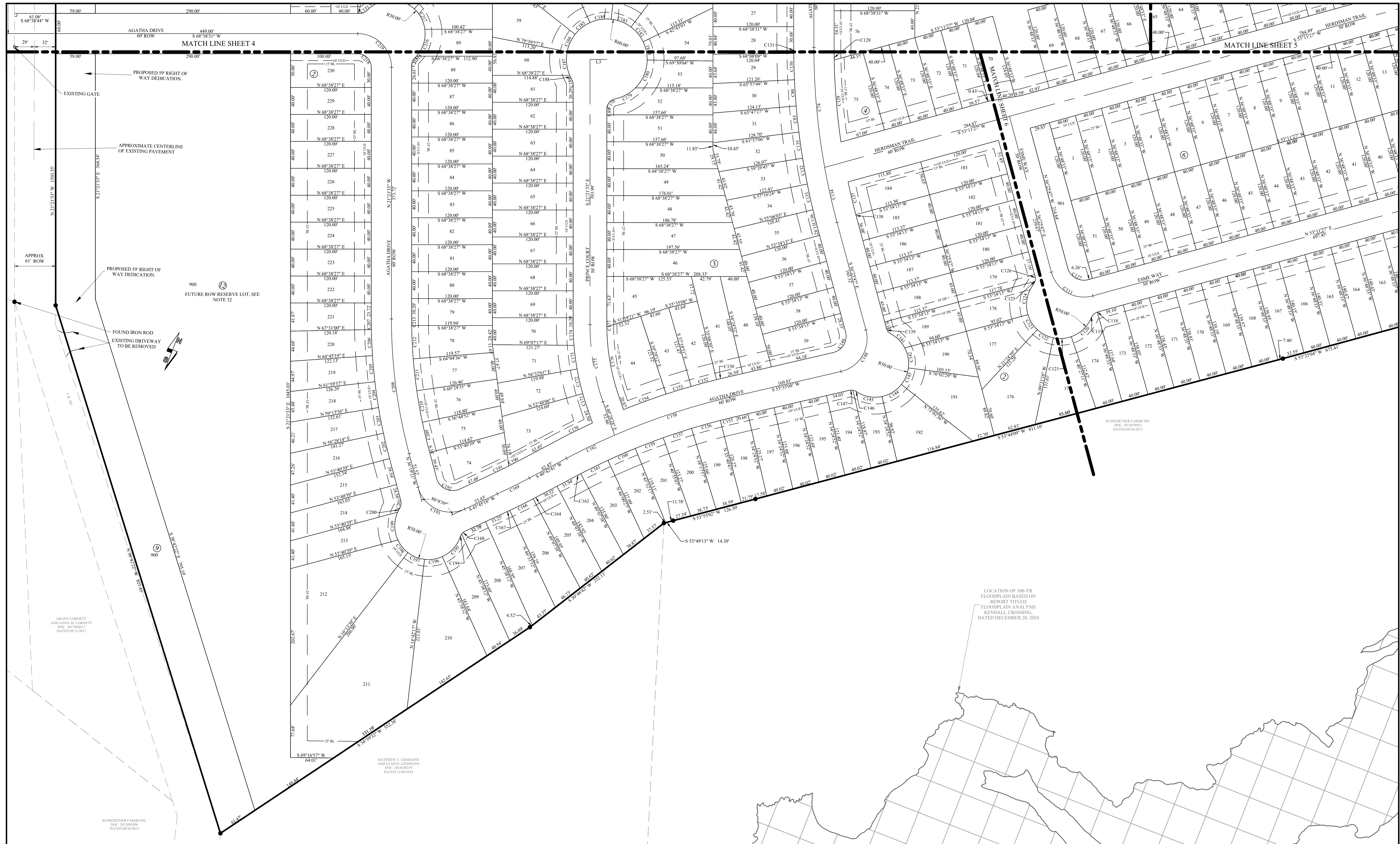
SURVEYOR INFORMATION
COREY SHANNON R.P.L.S. NO. 5967 YALGO ENGINEERING 109 W. 2nd Street, Suite 201 Georgetown, TX 78626

ENGINEER INFORMATION
KEITH A. CALDWELL, P.E. 101956 YALGO ENGINEERING 109 W. 2nd Street, Suite 201 Georgetown, TX 78626

Yalgo Engineering, LLC
 109 W. 2nd Street, Suite 201
 Georgetown, TX 78626
 PH (254) 953-5353
 FX (254) 953-5057

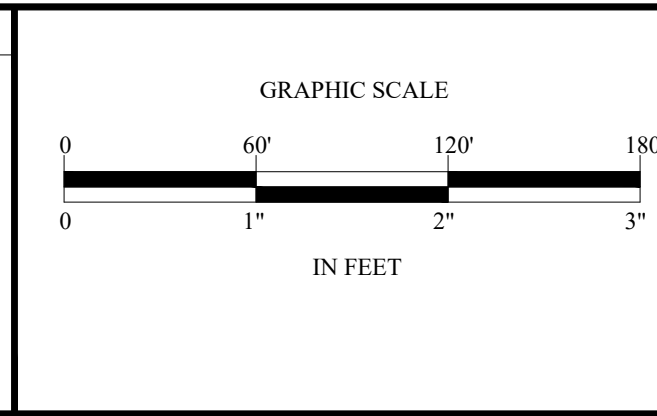
Texas Registered Engineering Firm # F-24040
 Texas Registered Surveying Firm # 10194797

PRINTED ON November 25, 2025



REV.	DESCRIPTION	DATE	BY

PROJECT INFORMATION
TOTAL SIZE: 108.66 Acres
TOTAL BLOCKS: 6
TOTAL RESIDENTIAL LOTS: 512
TOTAL NON-RESIDENTIAL LOTS: 11



BENCHMARK
 Cotton spindle set in the approximate center of pavement of County Road 303, bearing S 65°26'28" E, 342.98 feet from the most southerly corner of Tract D, Kendall Crossing subdivision.
 Observed GPS coordinates based on Texas State Plane Coordinate System of 1983, Central Zone (4203)
 N: 30269223.65
 E: 3170444.69
 Z: 778.72 (NAVD88-Geoid18)

PRELIMINARY PLAT 7 KENDALL CROSSING WILLIAMSON COUNTY, TEXAS

OWNER INFORMATION
 WBW SINGLE LAND INVESTMENT, LLC
 -SERIES 149
 109 W. 2nd Street, Suite 201
 Georgetown, TX 78626
 254-953-5353
 pshpherd@wbwdevelopment.com

SURVEYOR INFORMATION
 COREY SHANNON
 R.P.L.S. NO. 5967
 YALGO ENGINEERING
 109 W. 2nd Street, Suite 201
 Georgetown, TX 78626

ENGINEER INFORMATION
 KEITH A. CALDWELL, P.E. 101956
 YALGO ENGINEERING
 109 W. 2nd Street, Suite 201
 Georgetown, TX 78626

Yalgo Engineering, LLC
 109 W. 2nd Street, Suite 201
 Georgetown, TX 78626
 PH (254) 953-5353
 FX (254) 953-5057
 Texas Registered Engineering Firm # F-24040
 Texas Registered Surveying Firm # 10194797

PRINTED ON November 25, 2025

TEXAS COMMISSION ON ENVIRONMENTAL QUALITY WATER DISTRIBUTION SYSTEM GENERAL CONSTRUCTION NOTES

1. This water distribution system must be constructed in accordance with the current Texas Commission on Environmental Quality (TCEQ) Rules and Regulations for Public Water Systems 30 Texas Administrative Code (TAC) Chapter 290 Subchapter D. When conflicts are noted with local standards, the more stringent requirement shall be applied. At a minimum, construction for public water systems must always meet TCEQ's "Rules and Regulations for Public Water Systems."
2. All newly installed pipes and related products must conform to American National Standards Institute (ANSI)/NSF International Standard 61 and must be certified by an organization accredited by ANSI [§290.44(a)(1)].
3. Plastic pipe for use in public water systems must bear the NSF International Seal of Approval (NSF-pw) and have an ASTM design pressure rating of at least 150 psi or a standard dimension ratio of 26 or less [§290.44(a)(2)].
4. No pipe which has been used for any purpose other than the conveyance of drinking water shall be accepted or relocated for use in any public drinking water supply [§290.44(a)(3)].
5. All water line crossings of wastewater mains shall be perpendicular [§290.44(c)(4)(B)].
6. Water transmission and distribution lines shall be installed in accordance with the manufacturer's instructions. However, the top of the water line must be located below the frost line and in no case shall the top of the water line be less than 24 inches below ground surface [§290.44(a)(4)].
7. The maximum allowable lead content of pipes, pipe fittings, plumbing fittings, and fixtures is 0.25 percent [§290.44(b)].
8. The contractor shall install appropriate air release devices with vent openings to the atmosphere covered with 16-mesh or finer, corrosion resistant screening material or an acceptable equivalent [§290.44(d)(1)].
9. The contractor shall not place the pipe in water or where it can be flooded with water or sewage during its storage or installation [§290.44(f)(1)].
10. When waterlines are laid under any flowing or intermittent stream or semi-permanent body of water the waterline shall be installed in a separate watertight pipe encasement. Valves must be provided on each side of the crossing with facilities to allow the underwater portion of the system to be isolated and tested [§290.44(f)(2)].
11. Pursuant to 30 TAC §290.44(a)(5), the hydrostatic leakage rate shall not exceed the amount allowed or recommended by the most current AWWA formulas for PVC pipe, cast iron and ductile iron pipe. Include the formulas in the notes on the plans.

The hydrostatic leakage rate for polyvinyl chloride (PVC) pipe and appurtenances shall not exceed the amount allowed or recommended by formulas in America Water Works Association (AWWA) C-605 as required in 30 TAC §290.44(a)(5). Please ensure that the formula for this calculation is correct and most current formula is in use:

$$Q = (LD^3P)/48,000$$

Where:

- Q = the quantity of makeup water in gallons per hour,
- L = the length of the pipe section being tested, in feet,
- D = the nominal diameter of the pipe in inches, and
- P = the average test pressure during the hydrostatic test in pounds per square inch (psi).

Revised: January 10, 2014
The hydrostatic leakage rate for ductile iron (DI) pipe and appurtenances shall not exceed the amount allowed or recommended by formulas in America Water Works Association (AWWA) C-600 as required in 30 TAC §290.44(a)(5). Please ensure that the formula for this calculation is correct and most current formula is in use:

$$L = (SD^3P)/48,000$$

Where:

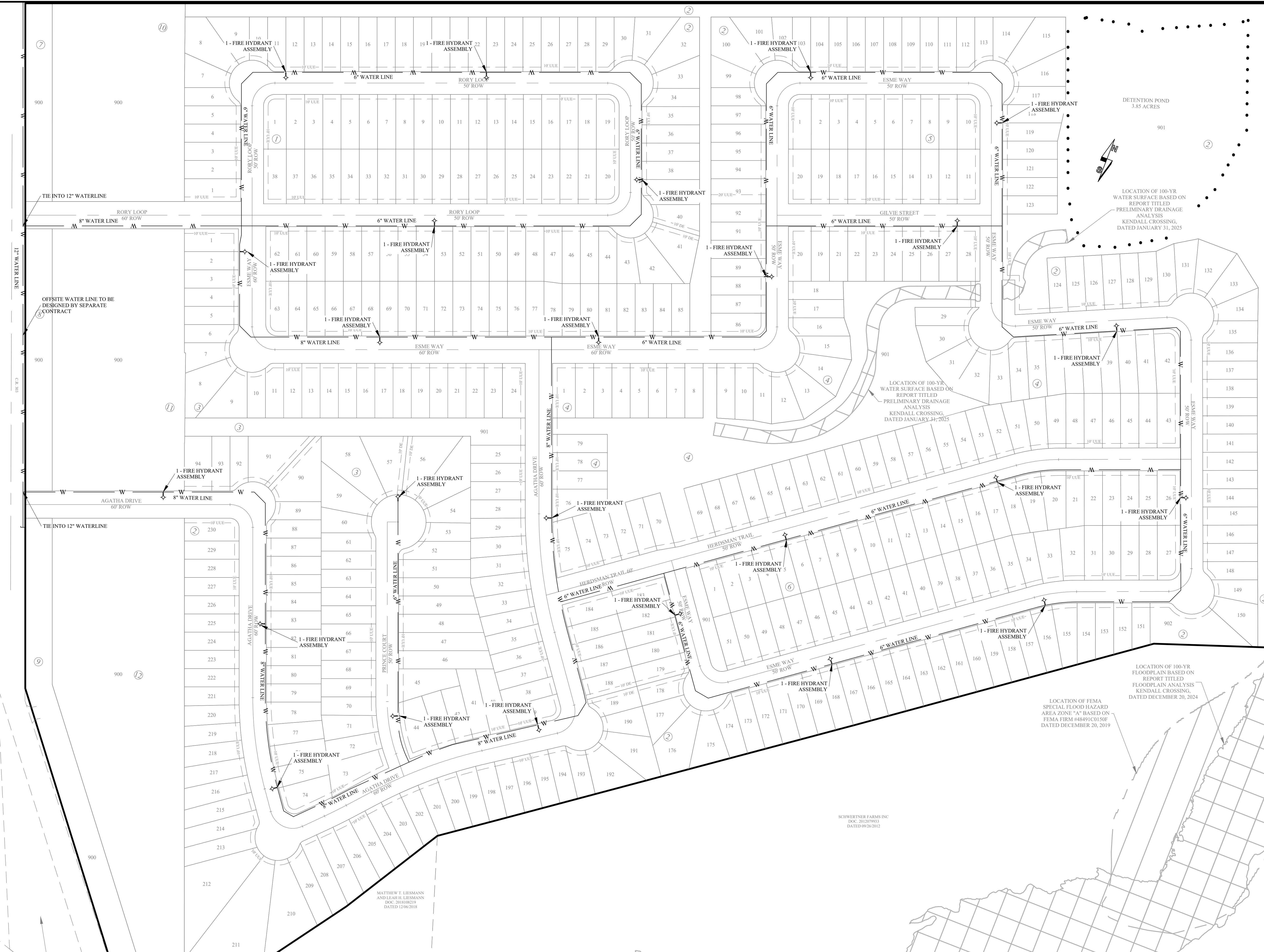
- L = the quantity of makeup water in gallons per hour,
- S = the length of the pipe section being tested, in feet,
- D = the nominal diameter of the pipe in inches, and
- P = the average test pressure during the hydrostatic test in pounds per square inch (psi).

12. The contractor shall maintain a minimum separation distance in all directions of nine feet between the proposed waterline and wastewater collection facilities including manholes. If this distance cannot be maintained, the contractor must immediately notify the project engineer for further direction. Separation distances, installation methods, and materials utilized must meet §290.44(c)(1)-(4).
13. The separation distance from a potable waterline to a wastewater main or lateral manhole or cleanout shall be a minimum of nine feet. Where the nine-foot separation distance cannot be achieved, the potable waterline shall be encased in a joint of at least 150 psi pressure class pipe at least 18 feet long and two nominal sizes larger than the new conveyance. The space around the carrier pipe shall be supported at five-foot intervals with spacers or be filled to the springline with washed sand. The encasement pipe shall be centered on the crossing and both ends sealed with cement grout or manufactured sealant [§290.44(c)(5)].
14. Fire hydrants shall not be installed within nine feet vertically or horizontally of any wastewater line, wastewater lateral, or wastewater service line regardless of construction [§290.44(e)(6)].
15. Suction mains to pumping equipment shall not cross wastewater mains, wastewater laterals, or wastewater service lines. Raw water supply lines shall not be installed within five feet of any tile or concrete wastewater main, wastewater lateral, or wastewater service line [§290.44(e)(7)].
16. Waterlines shall not be installed closer than ten feet to septic tank drainfields [§290.44(e)(8)].
17. The contractor shall disinfect the new waterlines in accordance with AWWA Standard C651-14 or most recent, then flush and sample the lines before being placed into service. Samples shall be collected for microbiological analysis to check the effectiveness of the disinfection procedure which shall be repeated if contamination persists. A minimum of one sample for each 1,000 feet of completed waterline will be required or at the next available sampling point beyond 1,000 feet as designated by the design engineer [§290.44(f)(3)].
18. Dechlorination of disinfecting water shall be in strict accordance with current AWWA Standard C655-09 or most recent.

GENERAL NOTES:

1. ALL WORK DETAILED ON THESE PLANS SHALL BE CONSTRUCTED TO THE SATISFACTION OF THE DIRECTOR OF PUBLIC WORKS IN ACCORDANCE WITH THE STANDARD CONSTRUCTION SPECIFICATIONS AND REGULATIONS OF WILLIAMSON COUNTY, UNLESS OTHERWISE NOTED.
2. CONTRACTOR SHALL COMPLY WITH ALL CURRENT O.S.H.A. REQUIREMENTS REGARDING TRENCH SAFETY AND SHORING. IT IS THE CONTRACTOR'S RESPONSIBILITY TO DRAFT AND ADHERE TO A TRENCH SAFETY PLAN.
3. CONSTRUCTION SHALL BE IN ACCORDANCE WITH ALL T.C.E.Q. RULES AND REGULATIONS IN CHAPTER 290 OF PUBLIC DRINKING WATER IN THE TEXAS ADMINISTRATION CODE, MANUFACTURERS RECOMMENDATIONS AND GENERAL INDUSTRY PRACTICES.
4. THE PROPOSED WATERLINES SHALL BE PVC WATER PIPE AND SHALL MEET THE REQUIREMENTS OF AWWA STANDARD FOR POLYVINYL CHLORIDE (PVC) PRESSURE PIPE FOR WATER, AWWA STANDARD C900, WITH CAST-IRON OUTSIDE DIMENSIONS. THE PIPE WILL BE CLASS 150 (DR-18).
5. ALL WATER MAINS MUST BE 42" BELOW FINISHED GRADE.
6. ALL WATER LINES SHOWN ARE PROPOSED UNLESS OTHERWISE NOTED.

WATERLINE SIZES TO BE DETERMINED. THE WATERLINE ALIGNMENTS ARE FOR REFERENCE ONLY AND CONSTRUCTION PLAN REVIEW AND APPROVAL IS REQUIRED.



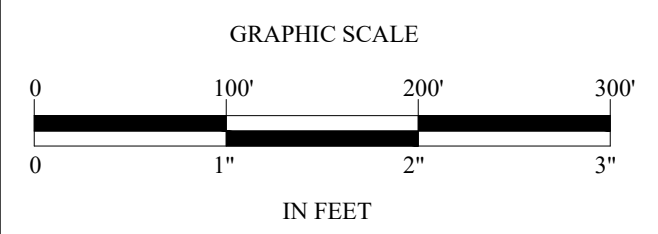
**WATER LAYOUT
KENDALL CROSSING
WILLIAMSON COUNTY, TEXAS**

REV.	DESCRIPTION	DATE	BY

PROJECT NUMBER: KC00	CLIENT NAME: WBW DEVELOPMENT SERVICES - SERIES 059
CHECKED BY: JML	CLIENT LOCATION: GEORGETOWN, TX
APPROVED BY: KAC	
AUTHORIZED BY: WBW	

PROJECT INFORMATION
TOTAL SIZE: 108.66 Acres
TOTAL BLOCKS: 6
TOTAL RESIDENTIAL LOTS: 512
TOTAL NON-RESIDENTIAL LOTS: 11

BENCHMARK
Cotton spindle set in the approximate center of
avenue of County Road 303, bearing S
05°26'28" E, 342.98 feet from the most
southerly corner of Tract D, Kendall Crossing
subdivision.
Observed GPS coordinates based on Texas
State Plane Coordinate System of 1983,
Central Zone (4203)
N: 10260223.65
E: 3170444.69
Z: 778.72 (NAVD88-Geoid18)



ENGINEER'S APPROVAL	Yalvo Engineering, LLC	SHEET
THIS DOCUMENT IS RELEASED FOR THE PURPOSE OF REVIEW UNDER THE AUTHORITY OF KEITH A. CALDWELL, P.E. 101956 ON 11/25/2025. IT IS NOT TO BE USED FOR CONSTRUCTION PURPOSES.	109 W 2nd Street Ste. 201 Georgetown, TX 78626 PH (254) 953-5353 FX (254) 953-5057 Texas Registered Engineering Firm # F-24040 Texas Registered Surveying Firm # 10194797	8 OF 10



STEPHANIE FOTIK
AND KATHI ZAMBERANGELE FOTIK
DOC. 20190733
DATED 01/24/2019

BOB R. FOTIK
AND JOANN FOTIK
VOLUME 752, PAGE 516
DATED 04/30/1979

CHRISTINA FOTIK MAZUCH
AND COREY MAZUCH
DOC. 20213405
DATED 12/02/2022

GRANT CORNETT
AND ANNA M. CORNETT
DOC. 20170417
DATED 09/11/2017

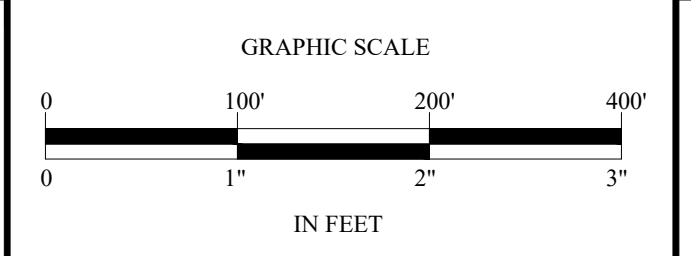
MATTHEW T. LIESMANN
AND LEAH H. LIESMANN
DOC. 20181819
DATED 12/06/2018

SCHWERTNER FARMS INC
DOC. 201207903
DATED 09/26/2012

REV.	DESCRIPTION	DATE	BY

PROJECT NUMBER: KC00	CLIENT NAME: WBW DEVELOPMENT SERVICES - SERIES 059
CHECKED BY: JML	CLIENT LOCATION: GEORGETOWN, TX
APPROVED BY: KAC	
AUTHORIZED BY: WBW	

PROJECT INFORMATION
 TOTAL SIZE: 108.66 Acres
 TOTAL BLOCKS: 6
 TOTAL RESIDENTIAL LOTS: 512
 TOTAL NON-RESIDENTIAL LOTS: 11



BENCHMARK
 Cotton spindle set in the approximate center of pavement of County Road 303, bearing S 05°26'28" E, 342.95 feet from the most southerly corner of Tract D, Kendall Crossing subdivision.
 Observed GPS coordinates based on Texas State Plane Coordinate System of 1983, Central Zone (4203)
 N: 10269225.65
 E: 3170444.69
 Z: 778.72' (NAVD88-Geoid18)

SEWER LAYOUT KENDALL CROSSING WILLIAMSON COUNTY, TEXAS

ENGINEER'S APPROVAL
 THIS DOCUMENT IS RELEASED FOR THE PURPOSE OF REVIEW UNDER THE AUTHORITY OF KEITH A. CALDWELL, P.E. 101956 ON 11/25/2025. IT IS NOT TO BE USED FOR CONSTRUCTION PURPOSES.

Yalgo Engineering, LLC
 109 W 2nd Street Ste. 201
 Georgetown, TX 78626
 PH (254) 953-5353
 FX (254) 953-5057
 Texas Registered Engineering Firm # F-24040
 Texas Registered Surveying Firm # 10194797

PRINTED ON November 25, 2025

STEPHANIE FOITIK
AND KEITH ZIMMERMANZEL FOITIK
DOC. 201907313
DATED 06/24/2019

JOE R. FOITIK
AND JO ANN FOITIK
VOLUME 352, PAGE 516
DATED 04/03/1979

CHRISTINA FOITIK MAZUCH
AND COLTON MAZUCH
DOC. 202210400
DATED 12/02/2022

GRANT CORNETT
AND ANNA M. CORNETT
DOC. 201708417
DATED 09/11/2017

MATTHEW T. LIEMANN
AND LEAH H. LIEMANN
DOC. 201808219
DATED 12/06/2018

SCHWERTNER FARMS INC
DOC. 2012079913
DATED 06/26/2012

SCHWERTNER FARMS INC
DOC. 2012079913
DATED 06/26/2012

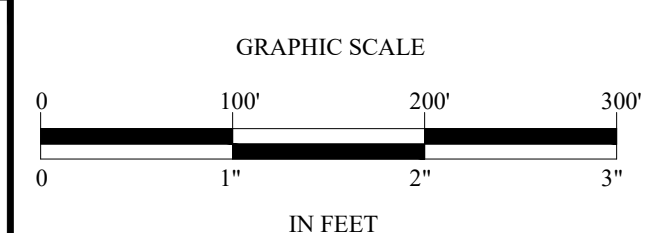
LEGEND
MB CLUSTER MAILBOX LOCATION

THE MAILBOX LOCATIONS ARE FOR REFERENCE ONLY AND CONSTRUCTION PLAN REVIEW AND APPROVAL IS REQUIRED.

REV.	DESCRIPTION	DATE	BY

PROJECT NUMBER: KC00	CLIENT NAME: WBW DEVELOPMENT SERVICES - SERIES 059
CHECKED BY: JML	CLIENT LOCATION: GEORGETOWN, TX
APPROVED BY: KAC	
AUTHORIZED BY: WBW	

PROJECT INFORMATION
TOTAL SIZE: 108.66 Acres
TOTAL BLOCKS: 6
TOTAL RESIDENTIAL LOTS: 512
TOTAL NON-RESIDENTIAL LOTS: 11



BENCHMARK
Cotton spindle set in the approximate center of pavement of County Road 303, bearing S 05°26'28" E, 342.98 feet from the most southerly corner of Tract D, Kendall Crossing subdivision.
Observed GPS coordinates based on Texas State Plane Coordinate System of 1983, Central Zone (4203)
N: 10269225.65
E: 3170444.69
Z: 778.72' (NAVD88-Geoid18)

MAILBOX LAYOUT KENDALL CROSSING WILLIAMSON COUNTY, TEXAS

ENGINEER'S APPROVAL
THIS DOCUMENT IS RELEASED FOR THE PURPOSE OF REVIEW UNDER THE AUTHORITY OF KEITH A. CALDWELL, P.E. 101956 ON 11/25/2025. IT IS NOT TO BE USED FOR CONSTRUCTION PURPOSES.

Yalco Engineering, LLC
109 W 2nd Street Ste. 201
Georgetown, TX 78626
PH (254) 953-5353
FX (254) 953-5057
Texas Registered Engineering Firm # F-24040
Texas Registered Surveying Firm # 10194797

SHEET
10
OF
10

PRINTED ON November 25, 2025