



# **CIT and MOT**

## **Success through Partnership**

### **Awards**

Crisis Intervention Team

**Sheriff of the Year**

**James Wilson**

USA

Mental Health America

**Best Treatment Team**

**CIT and MOT**

Texas

## What does CIT do?

- works very closely with the Williamson County Mobile Outreach Team, MHMR, all police departments, and patrol deputies, and hospital personnel
- assess mental health consumers for involuntary admissions
- provide transports to psychiatric facilities
- follow-up with mental health consumers

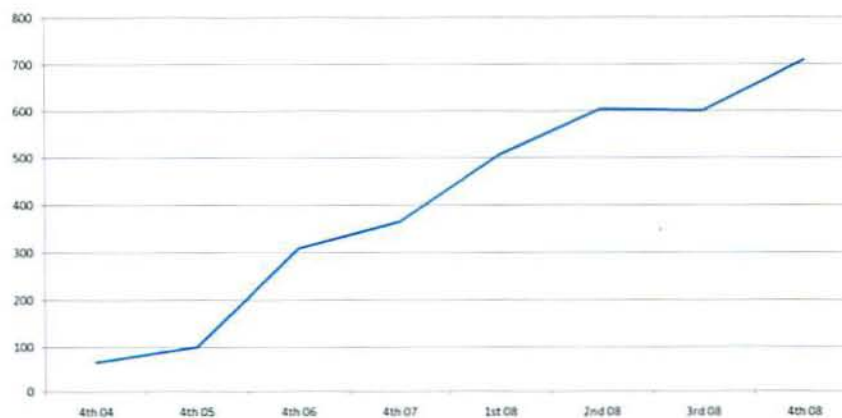
## What does the Mobile Outreach Team do?

- works very closely with the Williamson County Sheriff's CIT team, MHMR and Emergency Room personnel
- primary mission is to resolve short term crises and take action to prevent escalation or decompensation
- links patients with community resources
- arranges mental health care for those with no or very little ability to pay
- works with families and individuals who are experiencing a situational crisis and those who have chronic concerns

## CIT Call Volume



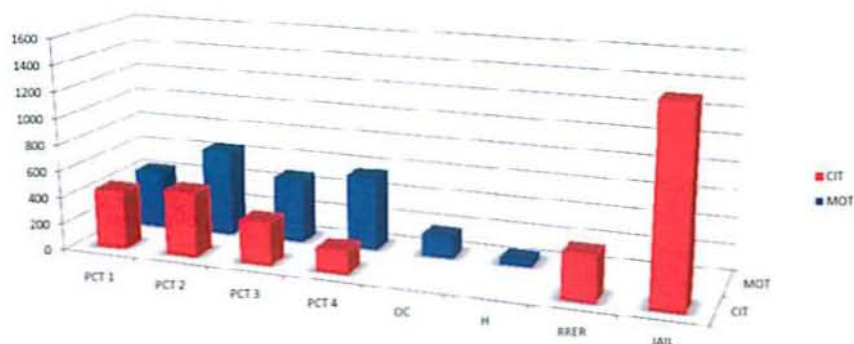
## MOT Call Volume



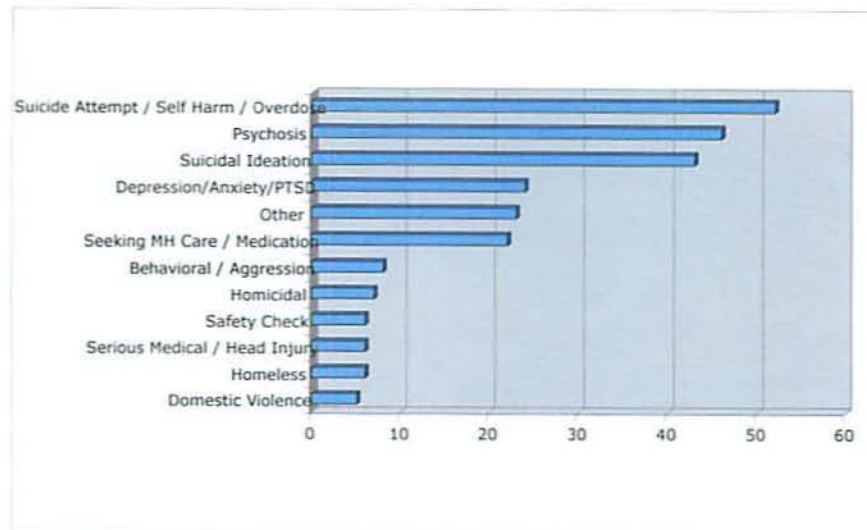
## Savings due to Diversions

MOT		
State Hospitals	111	\$599,400
Jail / Juvenile Detention	40	\$96,000
EMS / ER	109	\$403,300
<b>MOT Total</b>	<b>260</b>	<b>\$1,098,700</b>
CIT		
Jail / Juvenile Detention		\$1,070,400
<b>Grand Total</b>		<b>\$2,169,100</b>

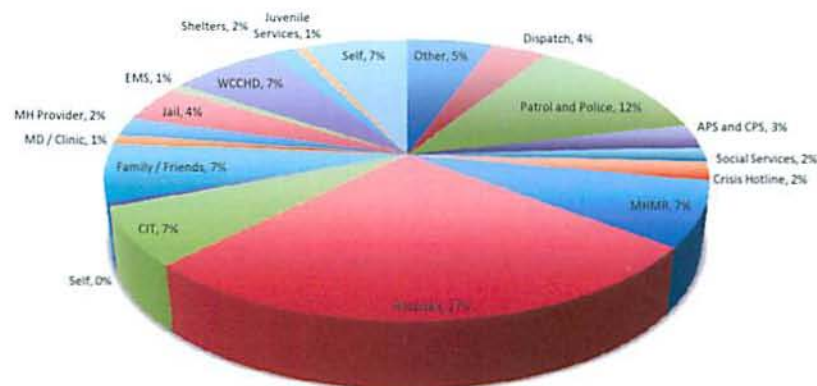
## Call Volume by Precinct



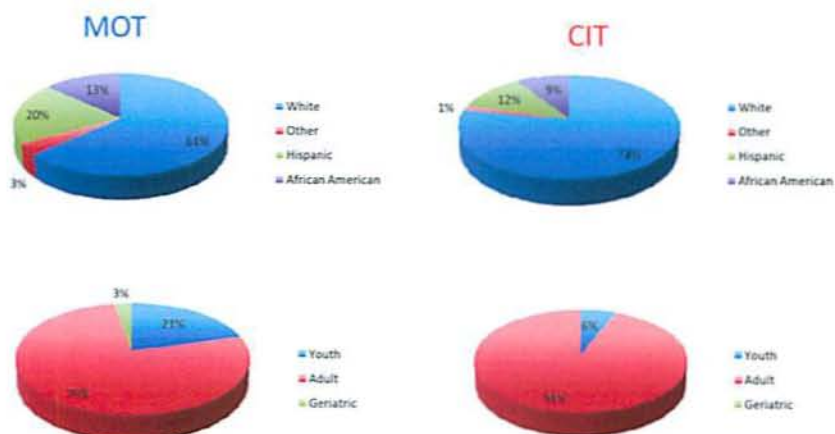
## Reason for Referral Mobile Outreach Team



## MOT – Source of Referral



## Ethnicity and Age



## CIT 2008

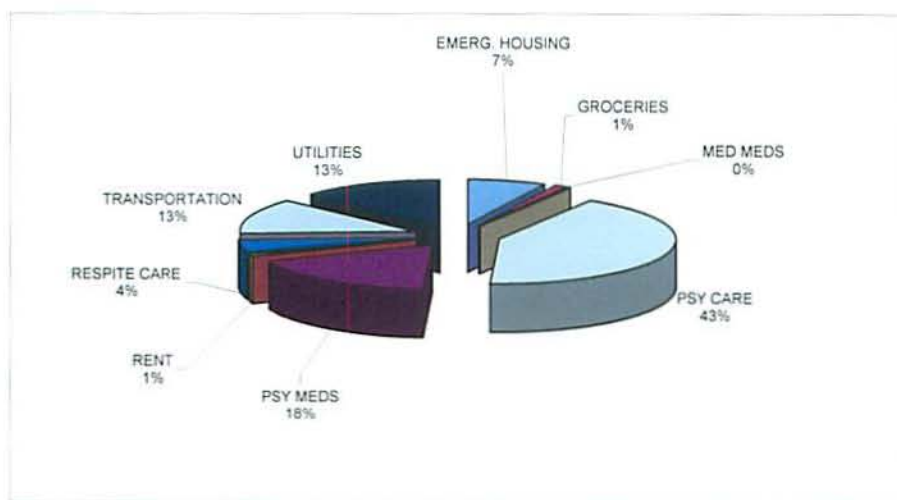
• Number of Total Calls	3,194
• Jail Diversions	10.11%
• Involuntary Placements	17.9%
• Average Time per Call	1.6 hours
• Restraints	22 or 0.7%
• Number of Staff	
• Officers	10
• Supervisor	1
• Administrative Support	2



## MOT 2008

- Number of Total Calls 2,423
- Diversion Percentage 10.73%
- Average Time per Call 1.71 hours
- Number of Staff
  - Field Staff 5
  - Supervisor 1
  - Administrative Support .75

## MOT Flex Funding



## State Bed Utilization Rates

120% → 60%

