



# Williamson County Transportation Plan Update

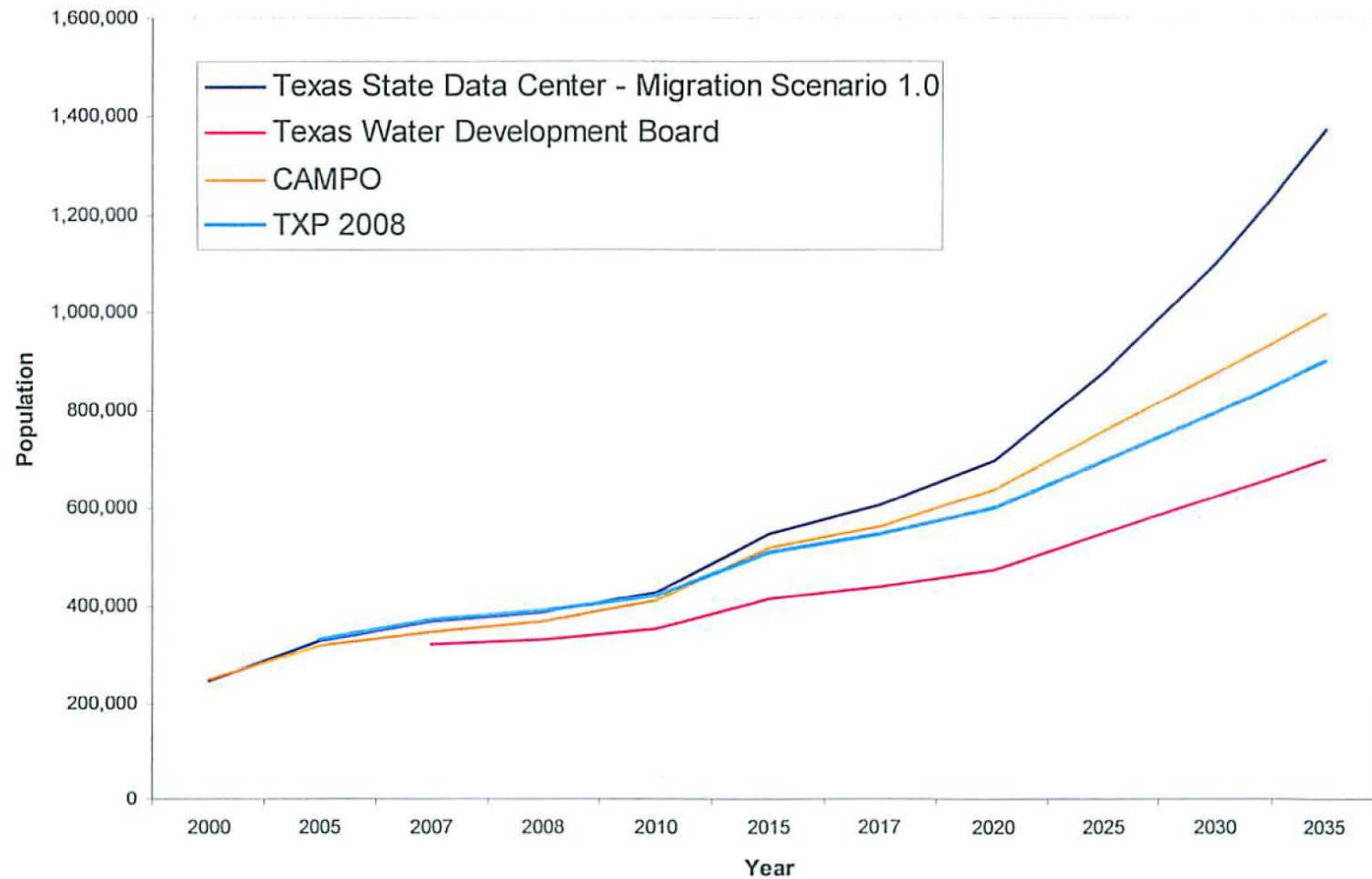
Williamson County Commissioners Court Presentation  
March 24, 2009

## Transportation Issues

- **Dramatic population growth**
  - 1 out of every 4 residents has arrived since 2000
- **Employment**
  - A substantial number of residents work outside the County
- **Land Use**
  - Cities have land-use regulations; the County does not
- **Transit System**
  - County lacks a comprehensive transit system

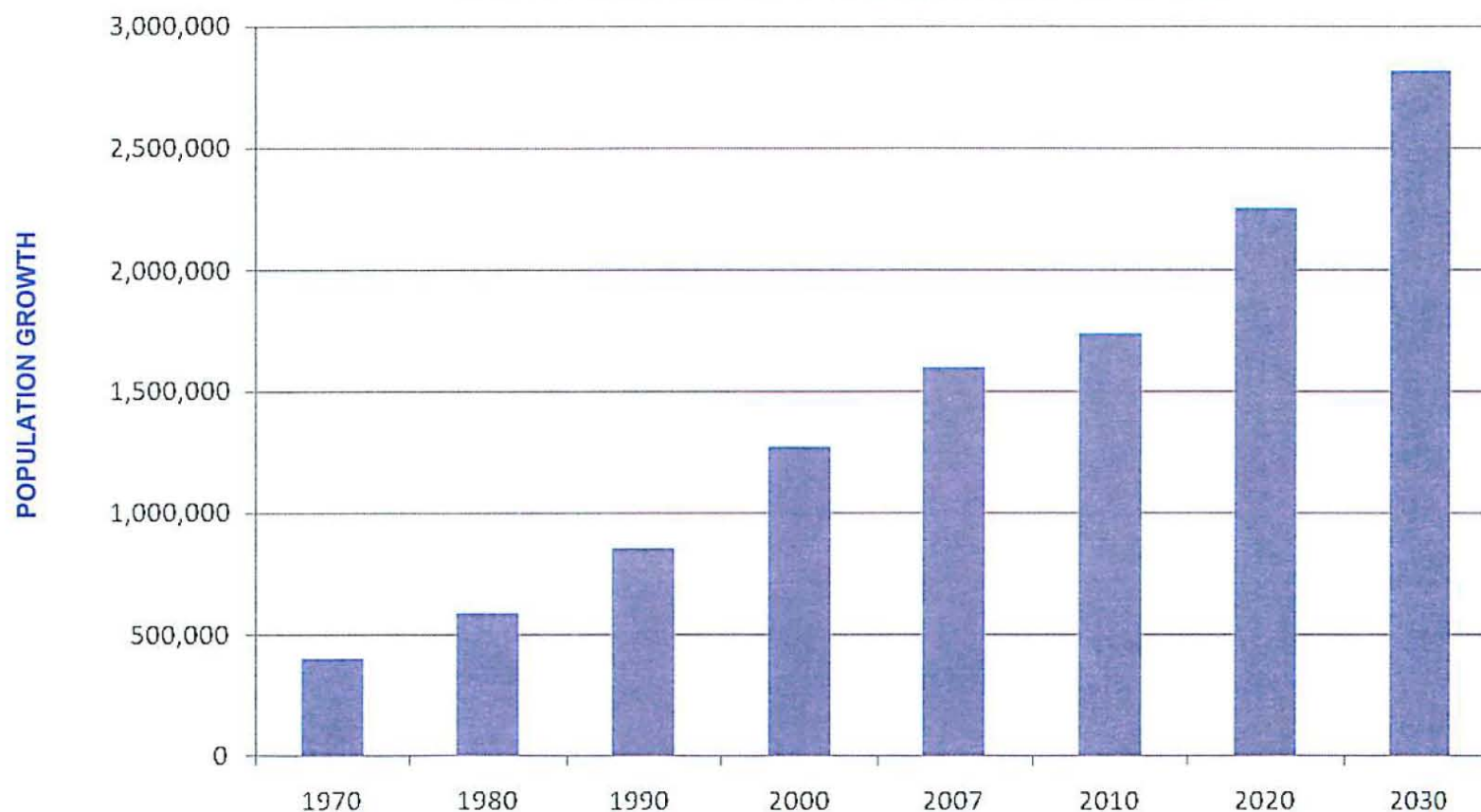
**ALL OF THESE LEAD TO MOBILITY CONGESTION**

## County Population Projections (2000 to 2035)



## Population

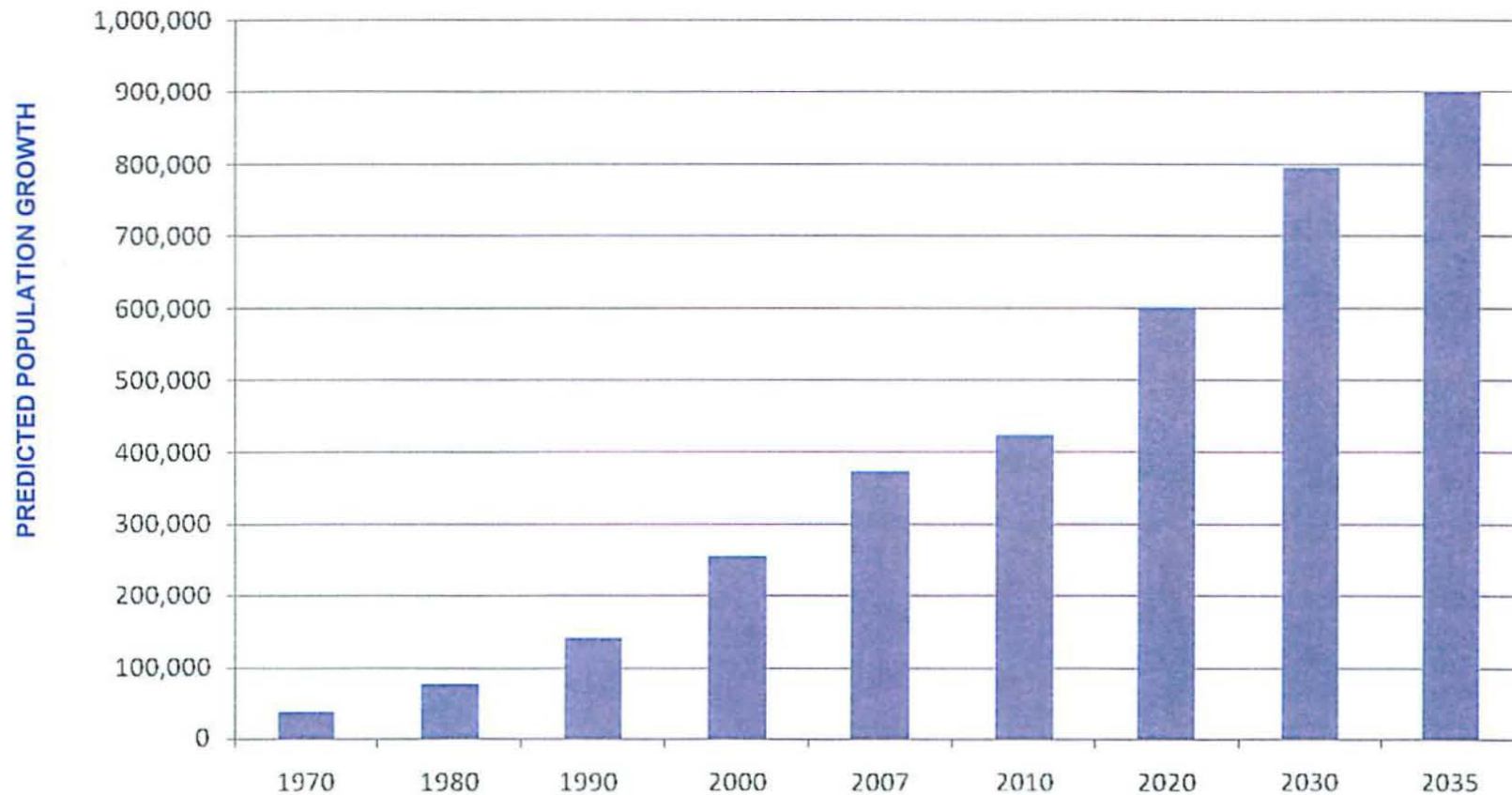
### Austin MSA Population Growth



***Austin MSA population growth is expected to double over the next 25 years.***

## Population

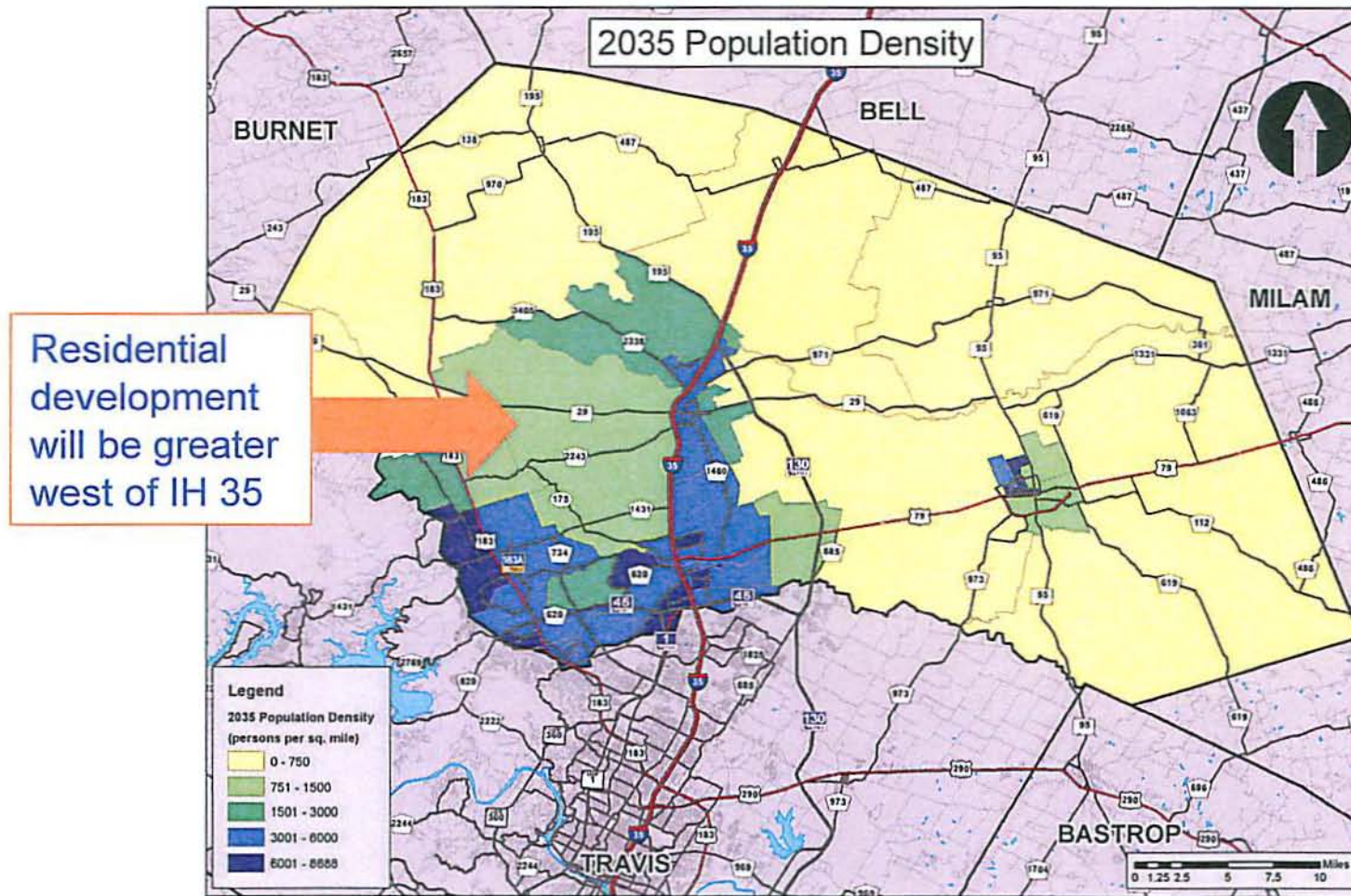
### Williamson County – Population Projection



***Williamson County is predicted to continue growing faster than the region***



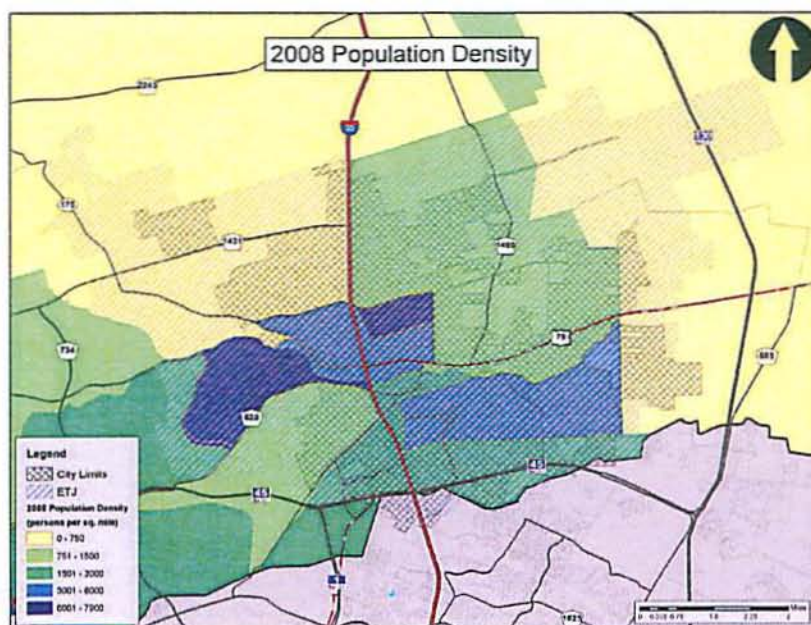
## County Growth Projections by Census Tract 2035 Population (persons per square mile)



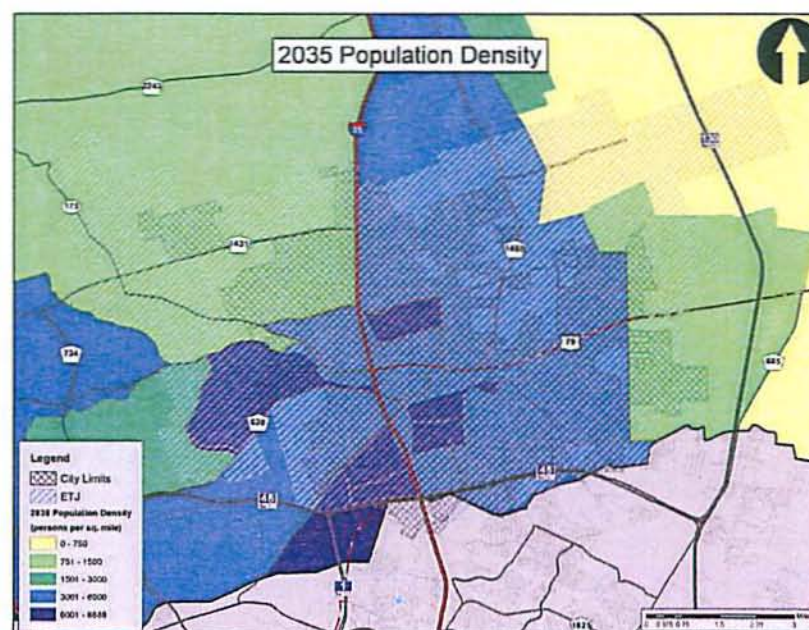
## Population

## City of Round Rock – Population Density

2008



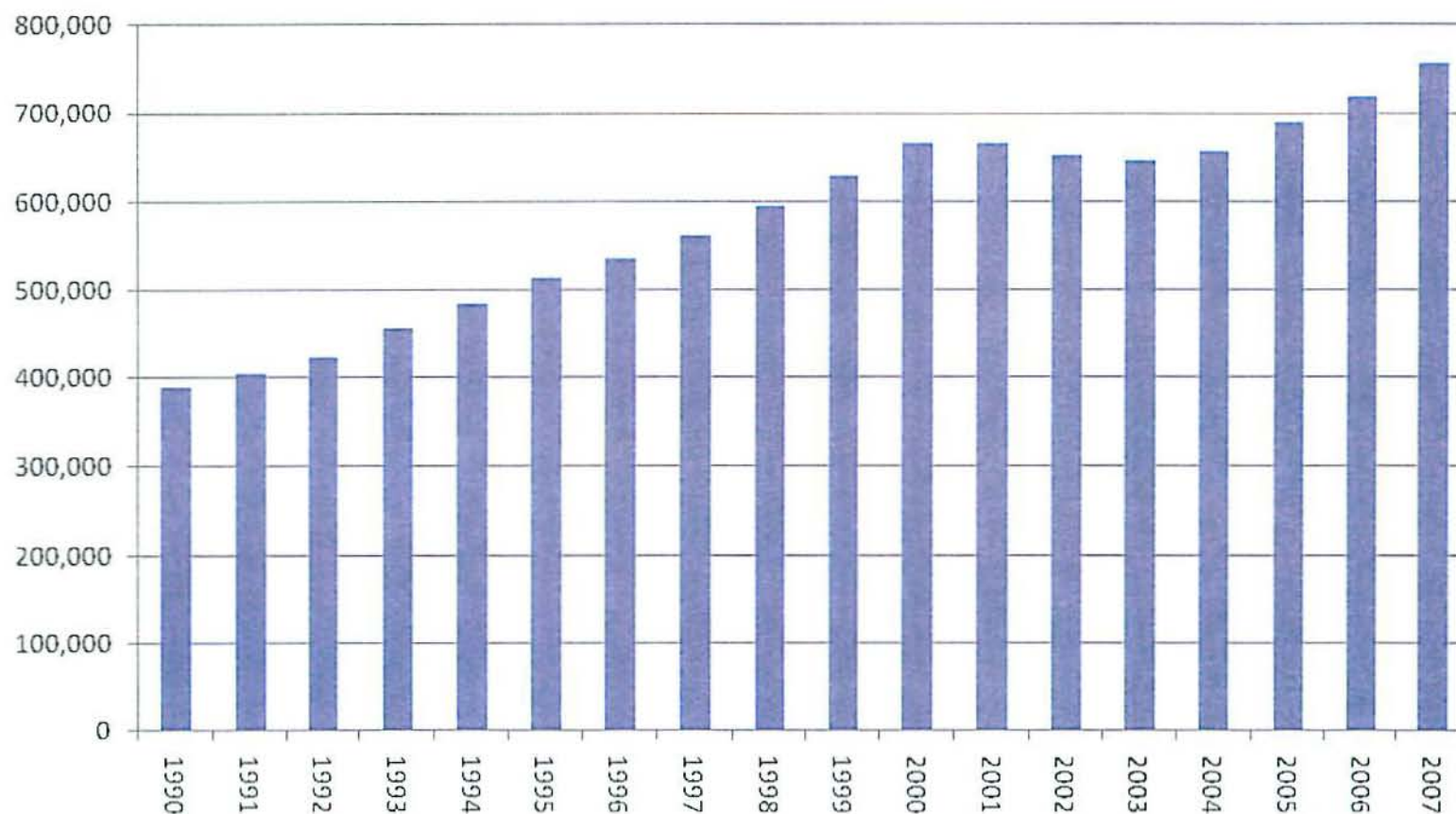
2035





## Employment

### Austin MSA Annual Total Employment

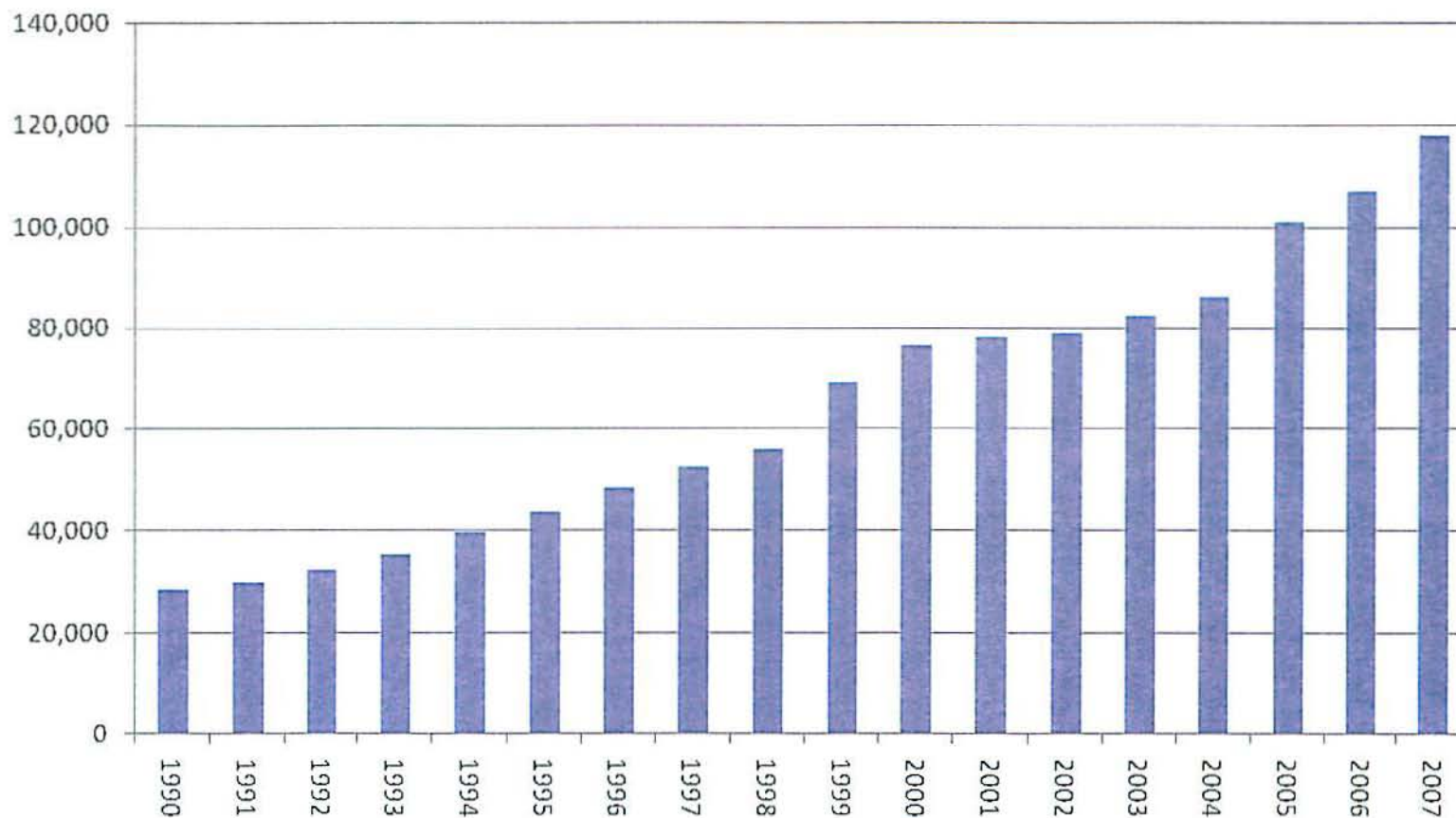


*Growth is still positive, but will continue to slow down through 2009*



## Employment

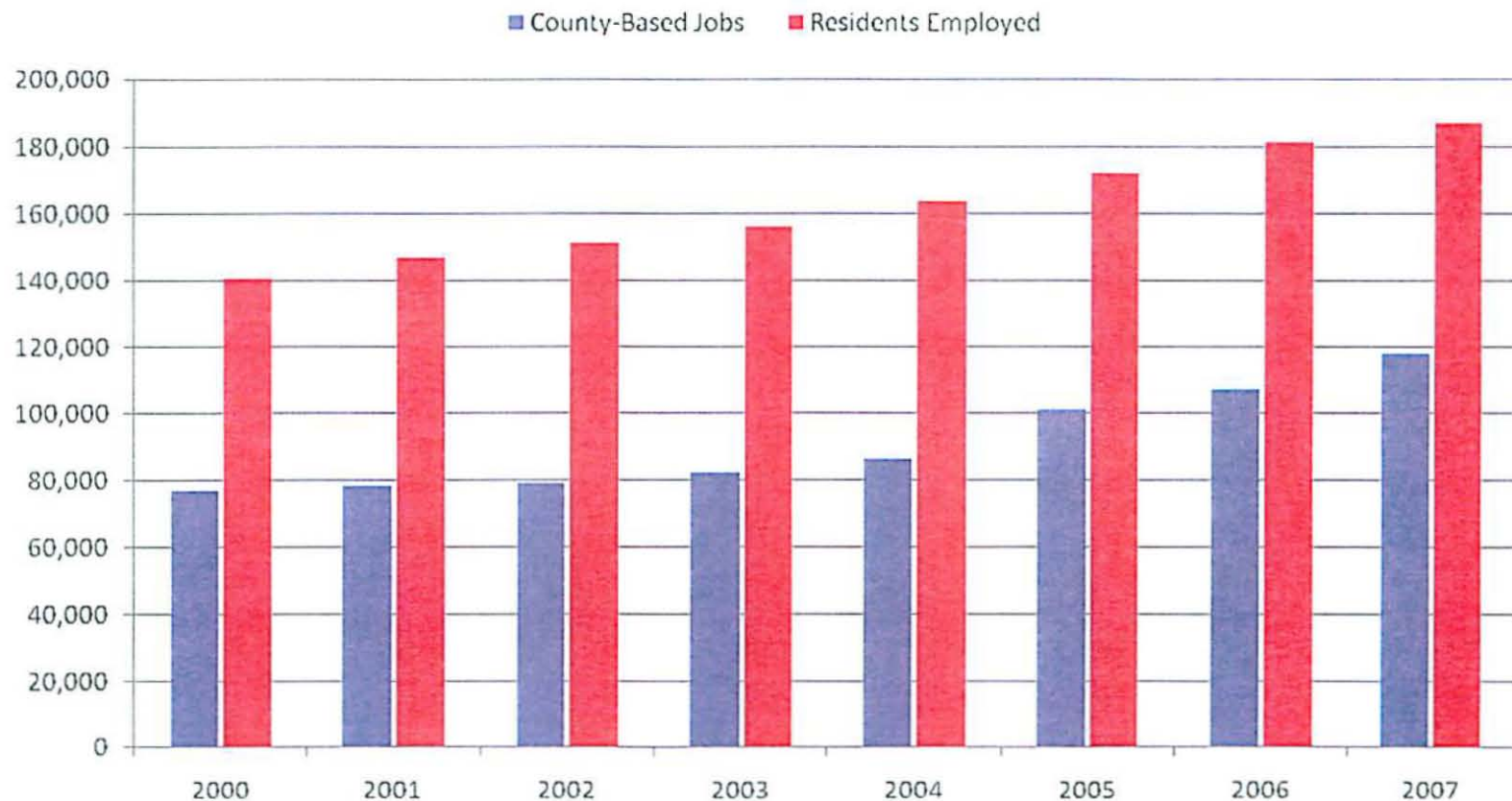
### Williamson County – Total Employment



***Total job growth (at 52%) has outpaced total population growth since 1990***

## Employment

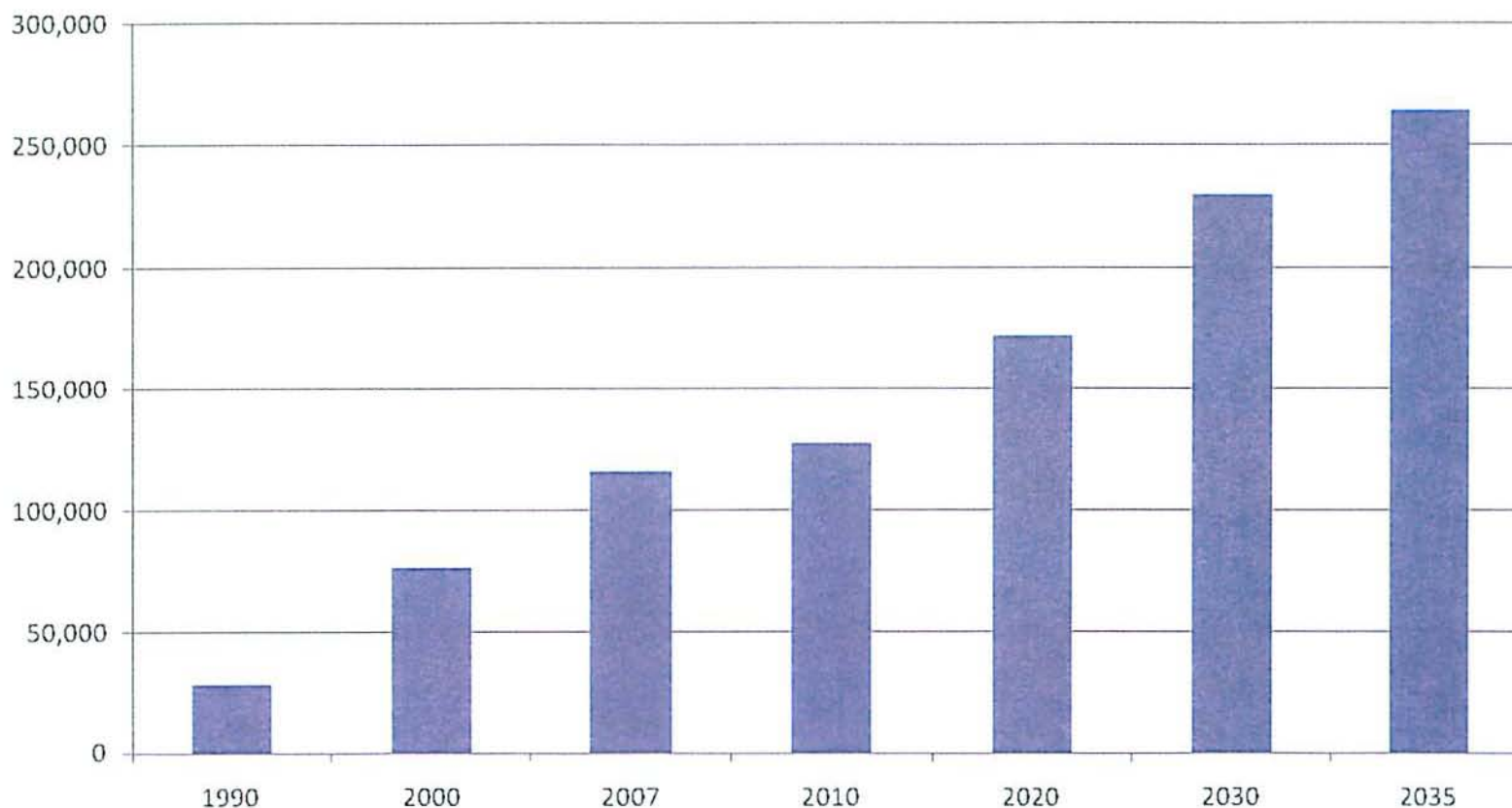
### Employed Williamson County Residents vs. In-County Jobs



***Only 27% of Williamson County residents  
work inside the County***

## Employment

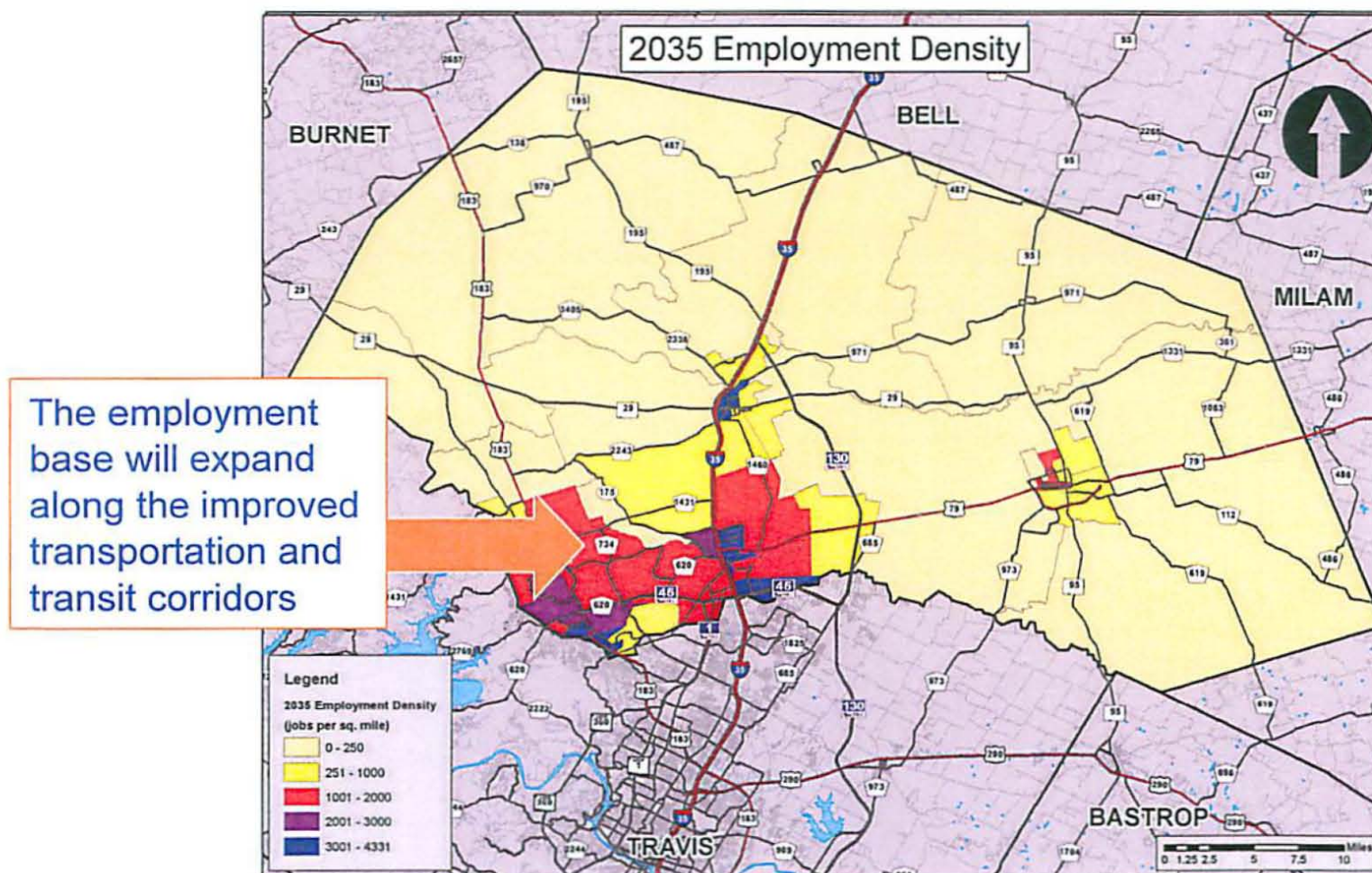
### Williamson County Employment Outlook



***Despite the current recession, Williamson County employment is still expected to double by 2035***



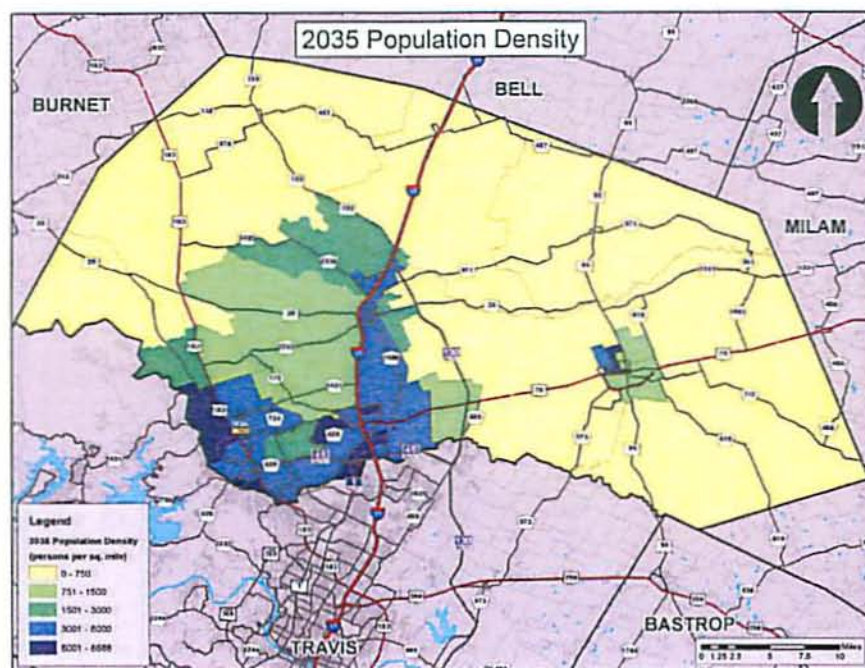
## County Growth Projections by Census Tract 2035 Employment (jobs per square mile)



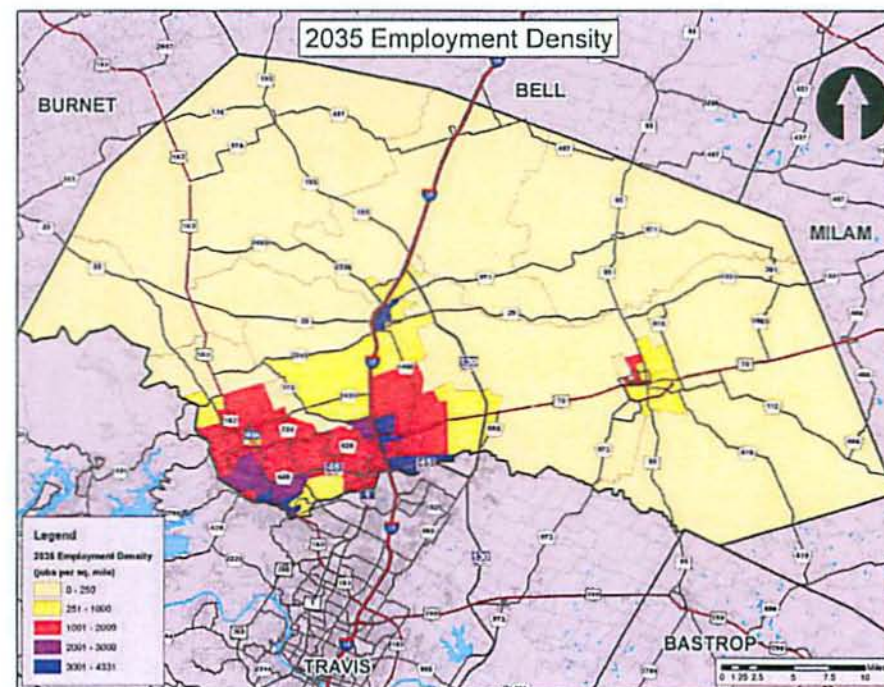


## Population & Employment County Growth Projections by Census Tract (2035)

2035 Population Density



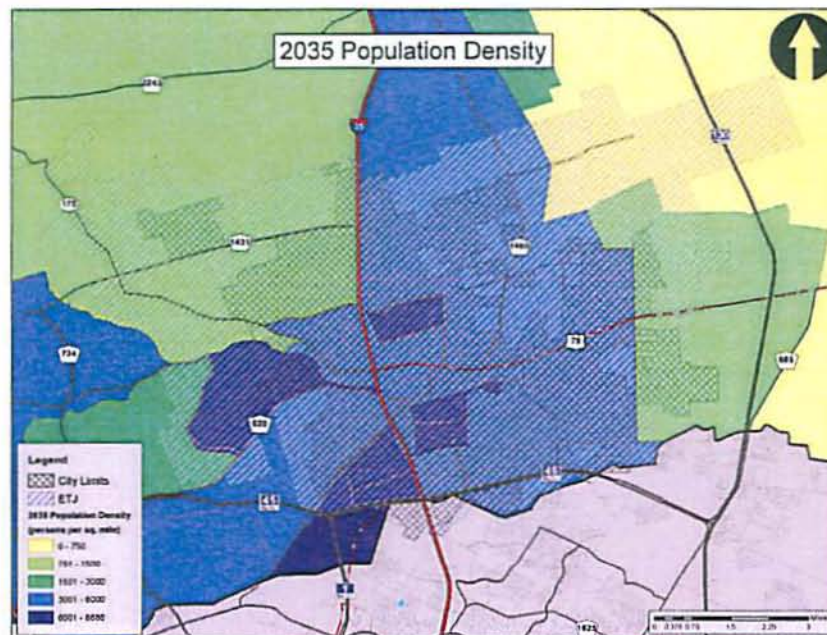
2035 Employment Density



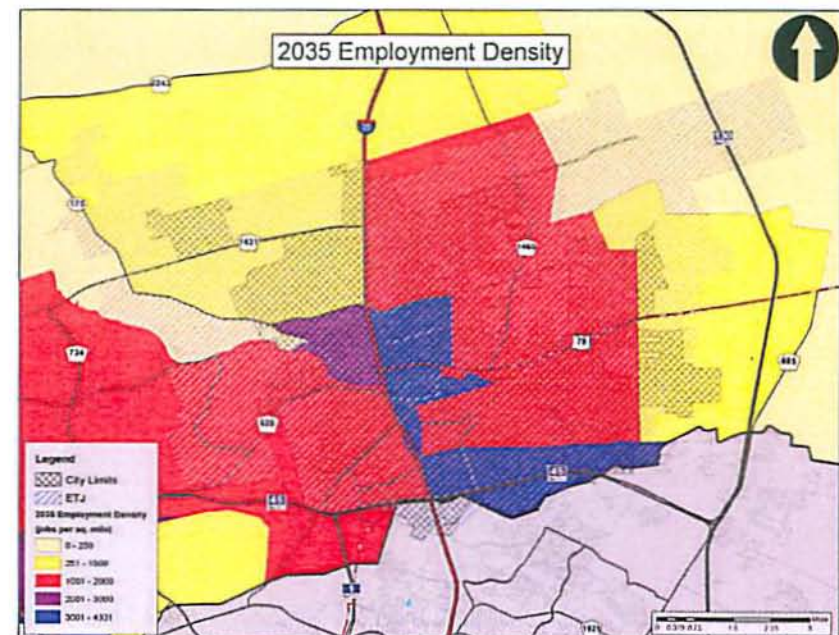


## Population & Employment City of Round Rock (2035)

2035 Population Density



2035 Employment Density

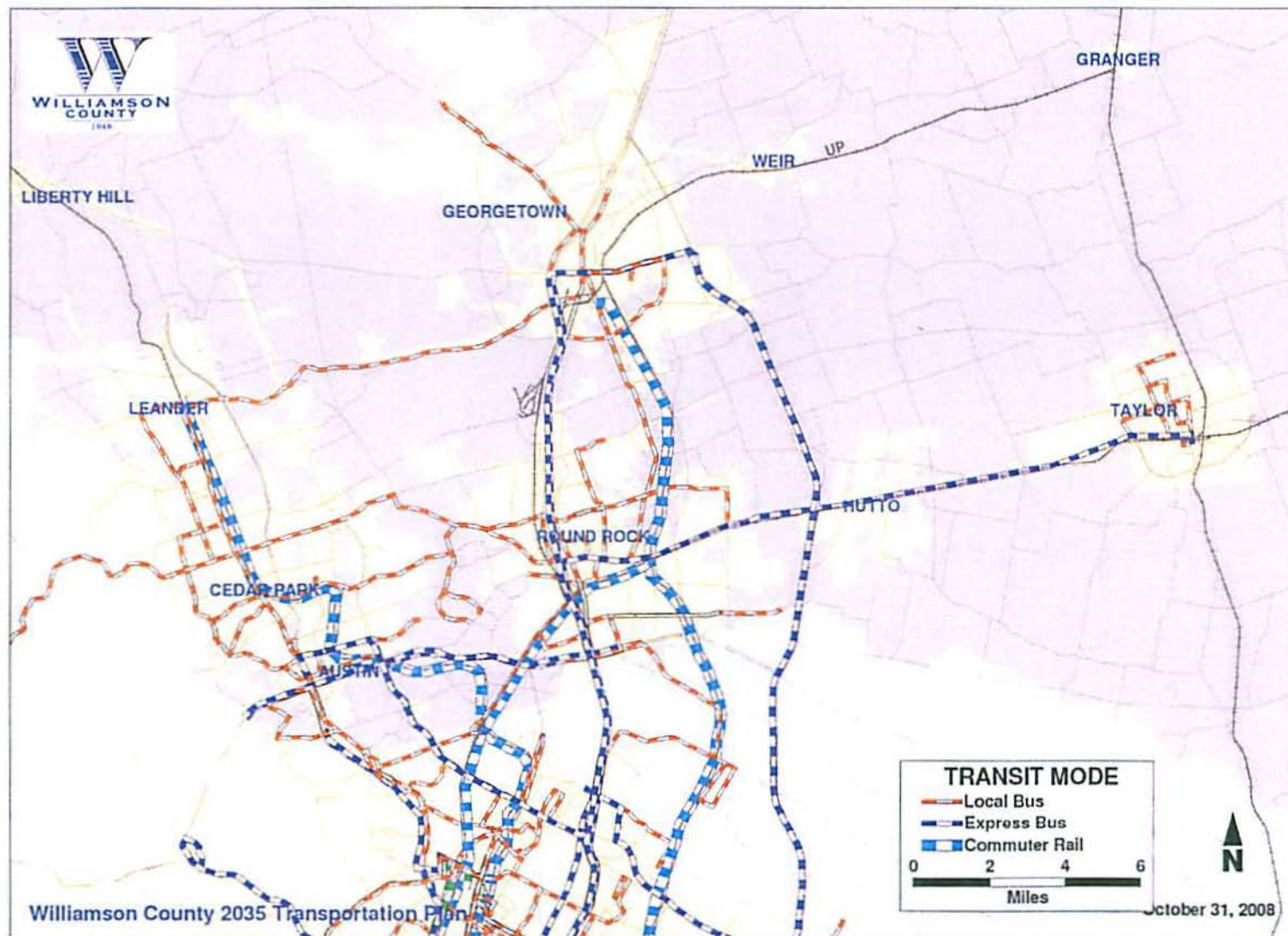




## **Transit-Oriented Development Mixed-Use, High-Density Communities (Current and Future)**

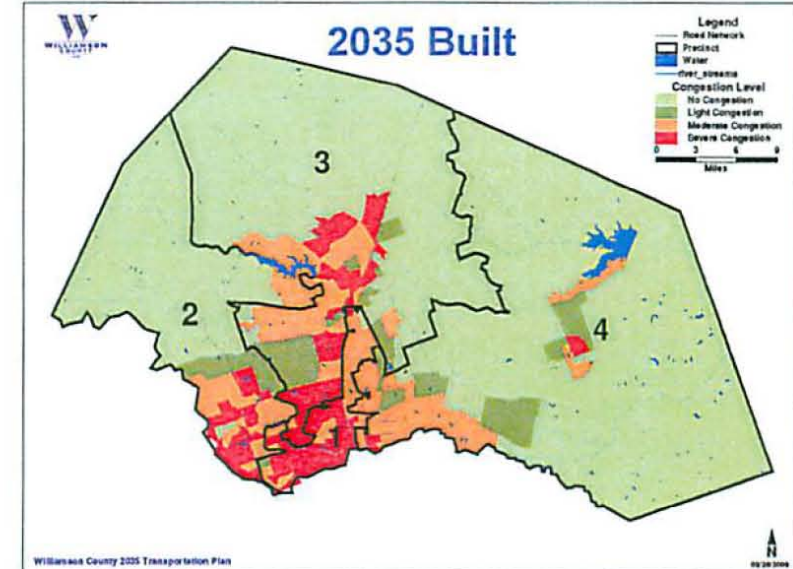
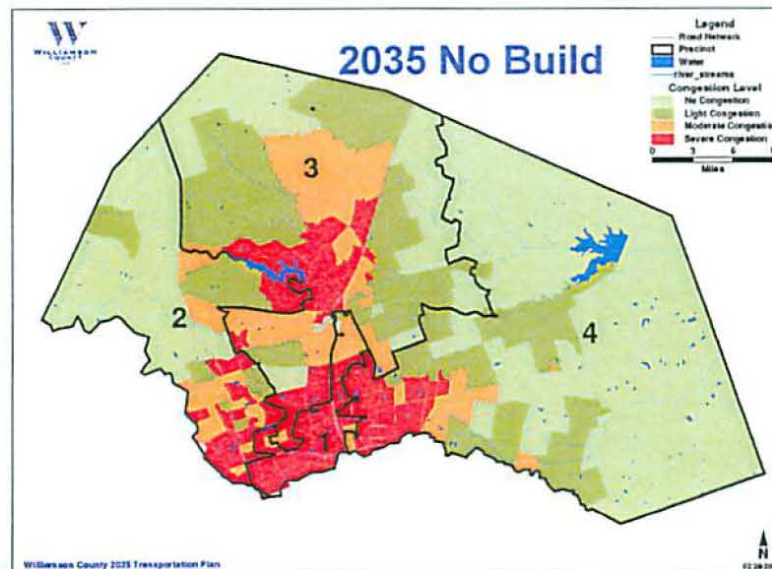
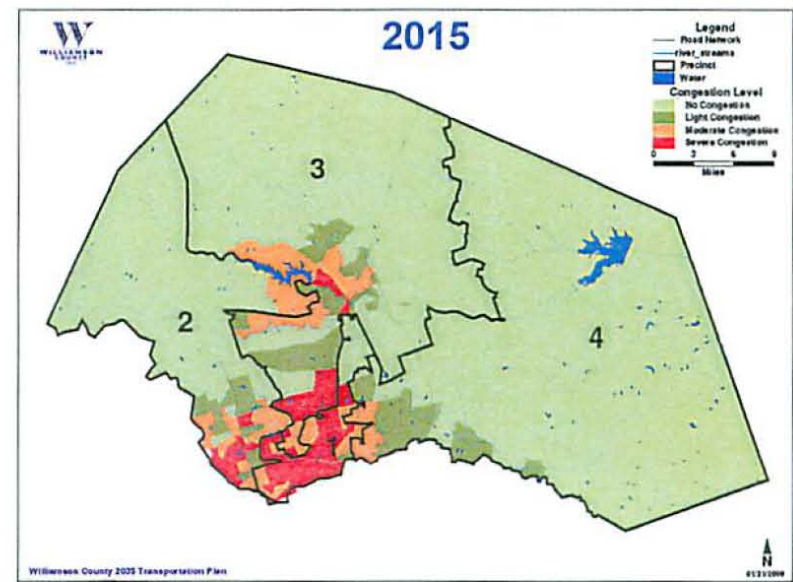
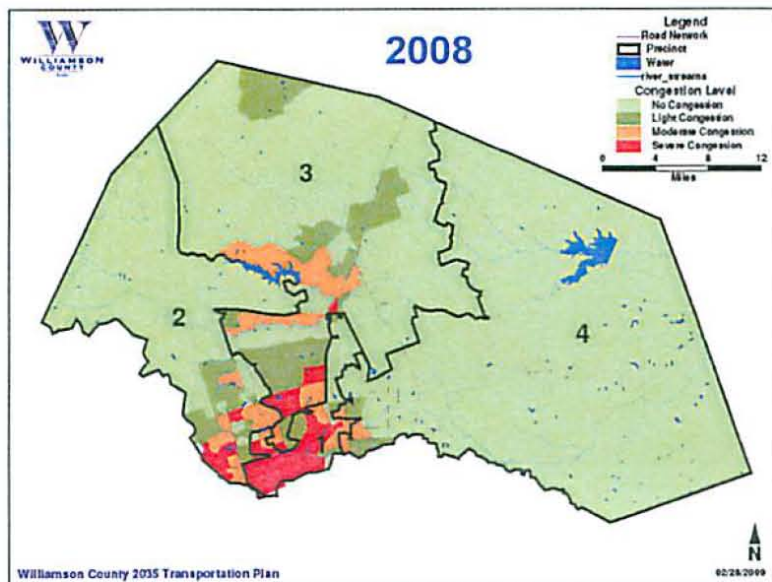
- Round Rock Downtown
- Leander Transit-Oriented Development
- Dell World Headquarters
- Avery Centre
- City of Georgetown SE Inner Loop/Mokan Corridor
- Opportunities along Capital Metro's Commuter Rail Line, including Lakeline Station and proposed Round Rock/SH 45 Connector

## 2035 Transit Routes to/from Williamson County





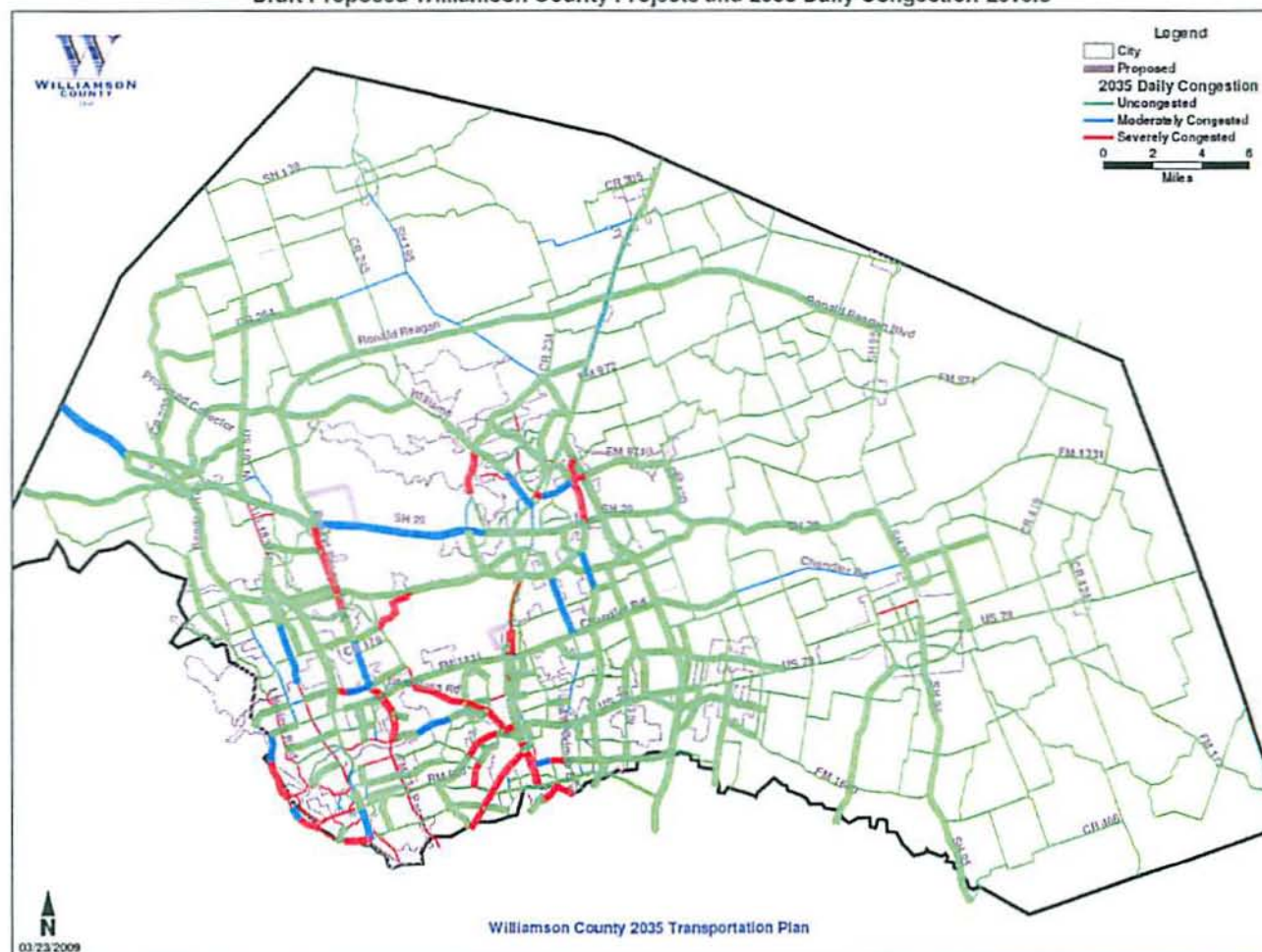
## AM Rush-Hour Traffic Congestion





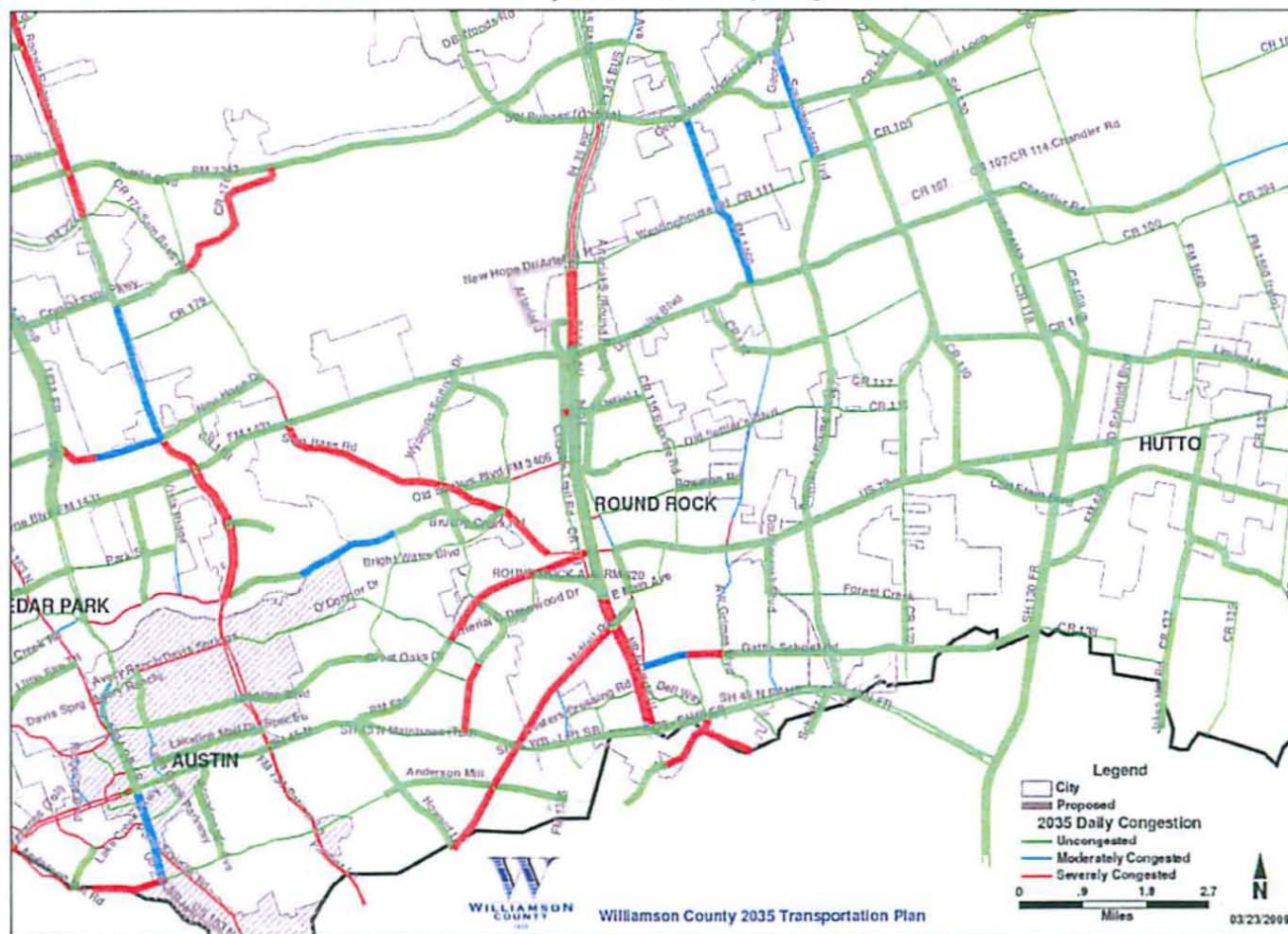
## Williamson County 2035 Plan (Build)

Draft Proposed Williamson County Projects and 2035 Daily Congestion Levels



## Round Rock Area – 2035 Plan (Build)

Draft Round Rock Projects and 2035 Daily Congestion Levels



NOTE: Based on CAMPO travel demand model for 2035 Metropolitan Transportation Plan.



## Williamson County 2035 Plan Summary

- 116 miles of new roadways
- 354 miles of roads will receive additional lanes
- Currently, 17% of our roads are heavily congested during morning rush hour; if no improvements are made, 59% of these same roads would be congested by 2035
- Cost of the plan is \$1.80B (in 2008 dollars)
  - Williamson County Improvements: \$388M
  - City Improvements: \$504M
  - Improvements to the TxDOT Road System: \$828M

## Next Steps

- Continue City Collaboration and Public Outreach
  - Led by URS and Prime Strategies, Inc. to determine specific projects for inclusion in the plan
- Precinct Open Houses (6:00 p.m. to 8:00 p.m.)
  - Precinct 1: Monday, March 30, 2009 – Austin (Rattan Creek Community Center)
  - Precinct 4: Tuesday, March 31, 2009 – Taylor (Taylor Public Library)
  - Precinct 2: Monday, April 6, 2009 – Leander (Pat Bryson Hall)
  - Precinct 3: Tuesday, April 7, 2009 – Georgetown (Central Maintenance Facility)
- County-wide Open House/Public Comment
  - Thursday, April 16, 2009 from 2:00 p.m. to 8:00 p.m. Georgetown (Williamson County Courthouse)
- Commissioners Court Consideration of Plan Update
  - Early May 2009
- Submit Plan Update to CAMPO