



BUDGET PRESENTATION

May 12, 2009

Vivian L. Wood, C.C.T., C.I.O.
County Treasurer

I appreciate the opportunity to discuss the Treasurer's 2010 budget today. Listed below are the items I would like to bring to your attention.

Office Equipment increase includes the purchase of a custom made safe for the new Precinct 1 Annex in Round Rock. The safe may be utilized by all fee officers to move funds to my office and the bank by the courier. Previous safe purchases have been made through the Non-Departmental line item. Without the safe, there will be a reduction of approximately \$1,500.00.

Postage includes the postage increase of .02 cents and the costs of using the UPS Store at SH 29 and US 81 to seal, weigh, apply postage, and transport to the post office our weekly accounts payable run. The UPS charge is 20% of the postage applied. The cost of a postage meter with weigh on the way capability for my office was quoted at \$607.00 per month for an annual cost of about \$7,300.00 plus the cost of postage. The UPS store is a savings. We use the greatest volume of postage in the Courthouse.

Courier Service will remain the same, \$65,000.00. It provides daily service to the Cedar Park Annex, Round Rock Annex, Taylor Annex and JP 4, and Animal Shelter, Juvenile Services, Unified Road System Annex, Inner Loop Annex, Courthouse, Justice Center, Sheriff's Office and the bank in Georgetown.

Copier Rental/Supplies includes rental on new copier (present 5 year lease expires 11/09) with fax and color capability and will print and fax from any PC in the office. New lease will reduce the cost of ink cartridges; we will not replace the present fax machine, and the new copier should reduce the need for replacement printers.

WILLIAMSON COUNTY

Phone 512.943.1540 Fax 512.943.1590
710 Main Street, Suite 105
Georgetown, Texas 78626

Page 2

Treasurer's Budget continued;

Computer Software is the Oracle Treasury Module I requested in this year's budget. The module will provide an overall view of the cash, investment, and debt positions for County funds. It will integrate to the financial software to eliminate the need for hand posting of investments, interest income, cash transfers, inter-funds transfers, and should help us identify and track funds due to the County.

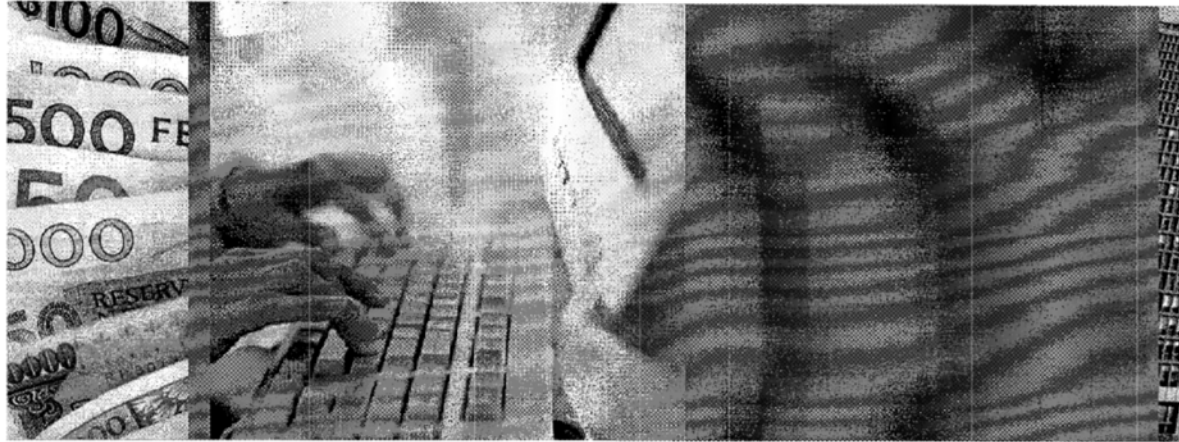
The ITS Department staff has been very helpful. After several discussions, we found that the Treasury Module is a part of the Oracle Financial module and we would need to purchase the Treasury license and pay for implementation of the product. The \$150,000.00 cost includes the license, implementation costs, and training costs. The reduction from last year's request is directly related to the reduction in the costs of implementation because there appears to be a surplus of personnel who have the expertise to implement the project and will do so at a much lower cost than at this time last year.

I believe the Treasury Module will prove to be a financial asset to the County. We will be able to implement the products that will apply to the public sector and not pay to implement all the pieces included in the module. I am providing a partial copy of the Oracle presentation on the Treasury Module. If you would like to review the entire presentation, I can forward it to your email address.

Part Time Position requested is for a person to be trained to fill in at all positions in my office. The increased work flow is a result of the ongoing growth of the County's departments and personnel. The person will also fill in when training is required for full time employees.

Thank you for your time.

ORACLE®



Cash, Treasury & Risk Management

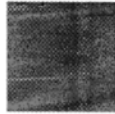
Increase Return on Investments, Decrease Cost of Financing

Randy Pollak

Global Solution Architect for Cash, Treasury & Risk Management

Oracle Products and
Industries Business Unit

OR



Oracle At-a-Glance



Founded in 1977. Headquarters in Redwood Shores, CA with operations in 145 countries.

- 275,000 total customers
- 220,000 database customers
- 30,000 applications customers
- 19,000 SMB apps customers
- 30,000 middleware customers
- 17,700 partners
- 60,000 employees
- 14,000 developers
- 7,000 support staff

Globally...

#1 in Database

#1 in Supply Chain M

#1 in Customer Relati

#1 in Human Capital M

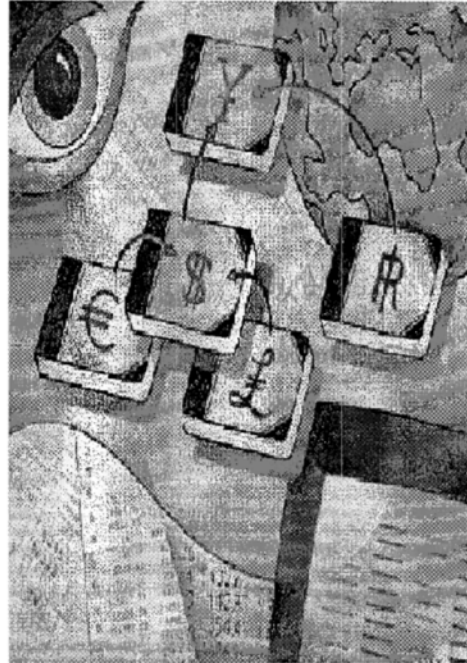
#1 in Industries

- Retail
- Communications
- Public Sector
- Professional Servi
- Financial Services



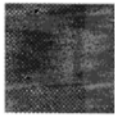
Manage Global Financial Exposure

Improve Global Visibility, Liquidity & Efficiency



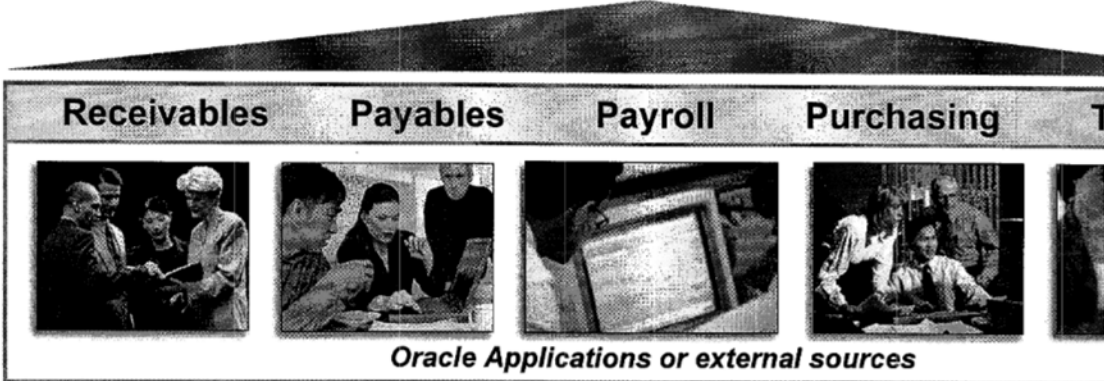
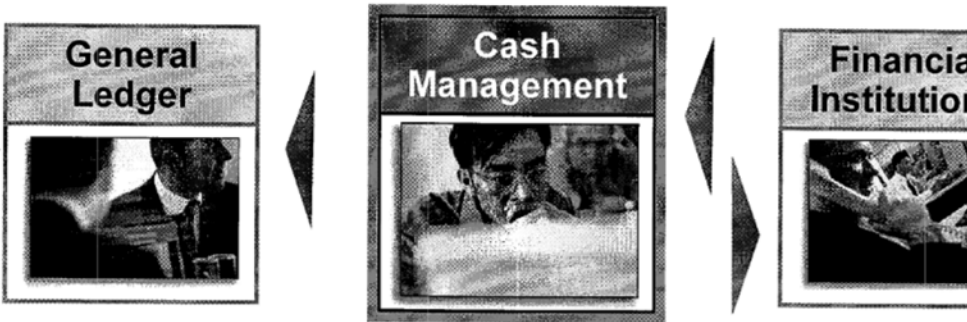
- Cash Management
 - Position and control cash
 - Administer bank relations
 - Manage liquidity, sweeps
- Treasury Management
 - Improve decision making
 - Automate deal entry
 - In-house banking
 - Revaluation & accounting
- Risk Management
 - Manage financial exposure
 - Internal controls, policies

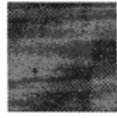




Manage Bank Information

Position and Control Cash





Manage Bank Information

Position and Control Cash

- Manage your cash with user-defined worksheets

Cash Position Results: Bank Account View

To view detailed transactions for each transaction source, click on the amount in the corresponding column.

[View Balance Gapping](#)

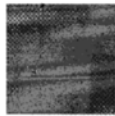
[Initiate Funds Transfer](#)

[Generate Cash Level](#)

[View in Discoverer Workbook](#) [Export](#)

Source Description	Master A/C (USD)	Deposit A/C (USD)	Disburse A/C (USD)
Opening Balance	208,055.10	21,748.33	10,435.10
Prior-Day Cash Flows	0.00	0.00	0.00
Treasury Inflows	20,251,589.63	84,432.00	24,800.00
EFT Supplier Payments	0.00	0.00	<32,206.00>
Treasury Outflows	<1,313,671.46>	0.00	0.00
ACH Payroll Direct Deposit	0.00	0.00	0.00
Net Cash Flows	18,937,918.17	84,432.00	<7,406.00>
Intra-Day Activities	14,478,702.17	0.00	0.00
Closing Balance	19,145,973.27	106,180.33	3,029.10
Minimum Target Balance	150,000.00	0.00	0.00
Maximum Target Balance	150,000.00	0.00	0.00
Surplus/(Deficit)	18,995,973.27	106,180.33	3,029.10

[View in Discoverer Workbook](#) [Export](#)



Forecast Global Cash Flows

Manage Liquidity

- Predict future cash needs with integrated information

Forecast Results

Forecast Name **January 2006 - 4 Month Forecast** Forecast Currency **USD**
 Template Name **Rolling 4 Month Forecast** Factor **Unit**

View Forecast Results By Bank Account
 Transaction Source

Display **Description Only**

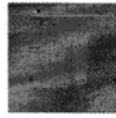
Forecast Results By Transaction Source

TIP To exclude a row, uncheck the Include checkbox and click the Recalculate Summary Cashflows button.

Add Row or Column		View in Discoverer Workbook			
Include	Row Number	Description	Jan 06	Feb 06	Mar 06
<input checked="" type="checkbox"/>	10	Treasury Inflows	215,849,307.95	214,081,332.64	10,142,208.46
<input checked="" type="checkbox"/>	20	Treasury Outflows	<198,021,570.39>	<174,467,489.61>	<13,043,521.26>
<input checked="" type="checkbox"/>	30	Supplier Invoices	<26,752.01>	<248,502.00>	<539,820.93>
<input checked="" type="checkbox"/>	40	Purchase Orders	<75,398.20>	<150,332.00>	<498,892.39>
<input checked="" type="checkbox"/>	50	Customer Invoices	8,635,318.38	11,123,832.50	984,339.00
<input checked="" type="checkbox"/>	60	Sales Orders	12,411,481.76	9,933,500.57	2,389,020.00
<input checked="" type="checkbox"/>	70	User-defined Inflows	0.00	0.00	20,000,000.00
<input checked="" type="checkbox"/>	80	User-defined Outflows	0.00	0.00	0.00

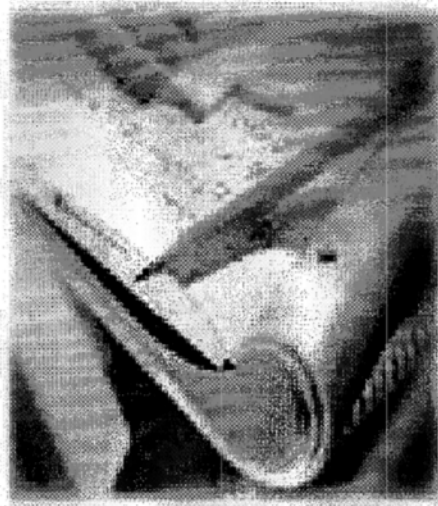
[Recalculate Summary Cashflows](#)

Summary Cashflows	Jan 06	Feb 06	Mar 06
Cash Inflow	236,896,108.10	235,138,665.71	33,515,567.46
Cash Outflow	<198,123,720.54>	<174,866,323.61>	<14,082,234.58>
Net Cashflow	38,772,387.56	60,272,342.10	19,433,332.88



Manage Deals in the Financial Market

Simplify Deal Administration



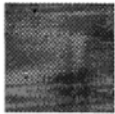
- Enforce security and limit o
 - Multiple levels of user access
 - Various investment or borrow
- Generate confirmation and settlement instructions
- Calculate accruals and revaluations
 - Straight-line and effective inte
 - Fair value market-to-market
- Post accounting entries
 - Flexible journal structure setu





“Oracle Treasury saves us three to four d
month by automatically computing interes
booking journal entries and bank transact





Make Smarter Decisions

Manage Financial Exposures

- Easily create reports to review financial positions

ORACLE Oracle Risk Management

Close Window

Analyses

Position | Maturity | Gap

Analyses: Position >

Bonds

Printable

Last Run 18-Jan-2006 18:20:43

Bonds held

Filter Bonds
As of Date System Date

Currency Deal Currency
Units 1

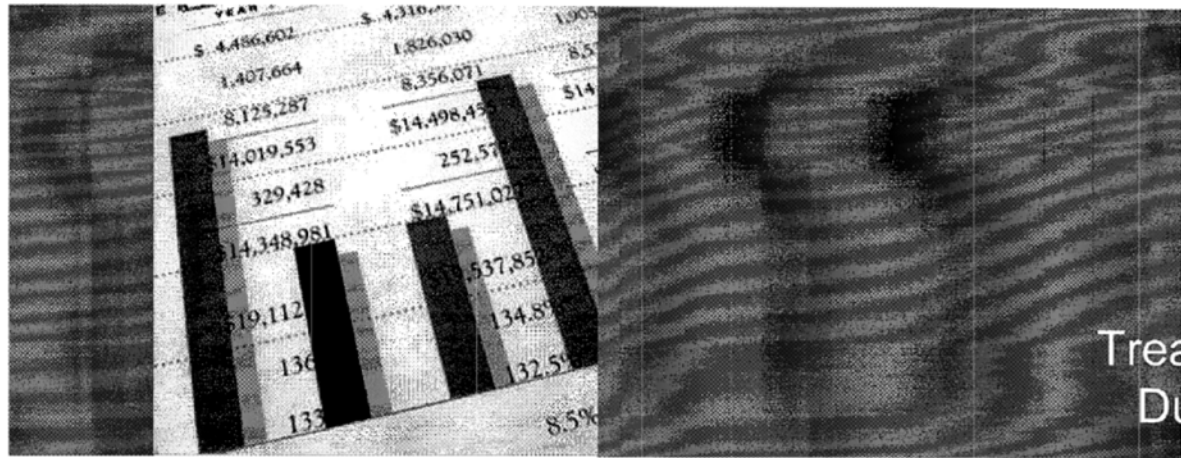
Export

Outstanding Amount	Currency	Maturity Date	Fair Value	Accrued Interest	Duration	Convexity	Position BPV	Yield to Maturity	Coupon Rate
900,000.00	USD	15-Apr-2009	392,872.55	30,617.55	3.005744	11.536352	<287.47>	3.814500	4.250000
100,000.00	USD	13-Oct-2010	102,689.04	1,399.04	4.191653	20.399642	<42.01>	4.939132	5.250000
2,000,000.00	USD	13-Oct-2010	2,353,780.77	27,980.77	4.191653	20.399642	<840.13>	4.939132	5.250000
2,000,000.00	USD	13-Oct-2010	2,353,780.77	27,980.77	4.191653	20.399642	<840.13>	4.939132	5.250000
1,000,000.00	USD	05-Apr-2010	1,325,623.84	8,028.84	3.757848	16.19667E	<374.12>	6.039829	6.250000
40,000,000.00	USD	05-Apr-2010	41,325,153.60	721,153.60	3.757848	16.19667E	<14,964.71>	6.039829	6.250000

Return to Position Analysis

Printable

Analyses | Calculators | Setup | Close Window | Preferences | Diagnostics



“Before, we simply didn’t have access to as much information. We needed to use external programs to create reports for us. Now, we easily create our own reports, and our information is more accessible because we can view it in multiple ways.”





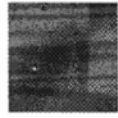
What Customers are Saying



“We're saving between 2 to 2 1/2 days per month by using Oracle Treasury's accrual and accounting automation. That's over 30 days per year that we're able to spend on more value added activities.”



“One of the biggest advantages of Oracle Treasury is the fact that it is integrated with Oracle Financials. It used to take us a few days to calculate and post interest accruals every month. With Oracle Treasury, it takes just a few hours.”



Why Oracle? — Top 10 Reasons

- 1 Provides Comprehensive and Integrated Treasury Solutions
- 2 Improves Visibility of Cash Flows and Financial Exposures
- 3 Mitigates Financial and Operational Risks
- 4 Delivers Pure 100% Internet Application
- 5 Addresses Compliance and Regulatory Issues
- 6 Increases Investment Returns
- 7 Decreases Borrowing Costs
- 8 Automates and Reduces Operating Costs
- 9 Scales Globally and with Transaction Volume
- 10 Lowers Total Cost of Ownership

