

Site Highlights

Tonnage

249,750 Waste

11,294 Brush diverted

Material Collected



Materials Pulled - Inbound Waste

Pounds

365,861

Materials

Scrap Metal

67,040

Cardboard

7,940,260

Shingles



Asphalt Shingle Recycling



The Williamson County asphalt shingle recycling pilot project launched in 2008. It will continue into 2012.



Recycling Center

- The Hutto Recycling Center is located at the Williamson County Landfill entrance on F.M. 1660

Hours of Operation:

Monday - Friday: 7 a.m. - 5 p.m.

Saturday: 7 a.m. - noon

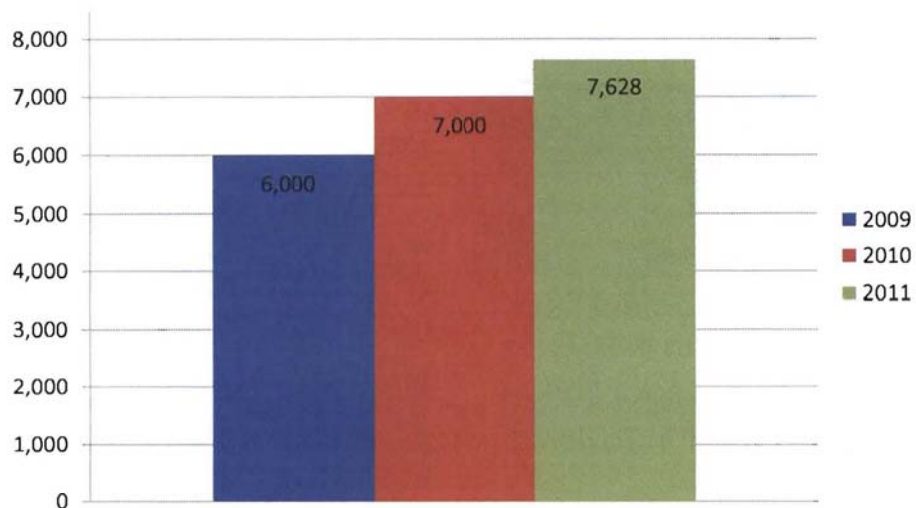
Sunday: Closed

(512) 846-2756



- In 2011, the Recycling Center was improved & reorganized, including the installation of new bins.

Recycling Center Visitors



Recycling Center Totals

Materials Collected

Gallons

4,360 Used Oil
6,500 Paint

Pounds

736,562 Scrap Metal
44,280 Plastic
48,972 Paper
106,271 Cardboard
2,560 Aluminum
160,942 E-waste
3,511 Fluorescent Bulbs
2,213 Household Batteries

Quantity

269 Car Batteries



Household Hazardous Waste



- 83,491 lbs of HHW collected in 2011.
- 1,472 Williamson County Residents served.

Waste Management held two HHW events in 2011:

- April 2nd in Cedar Park
- October 29th in Taylor



HHW Event Totals

2011 HHW Events	Cedar Park	Taylor
Total HHW (lbs.)	41,260	42,231
<i>Other Items</i>		
Household Batteries (lbs.)	270	132
Car Batteries (qty.)	83	29
Motor Oil (gal.)	850	275
Oil Filters (55-gal. drum)	1	1
Anti-Freeze (gal.)	250	55
Tires (qty.)	404	0
E-Waste (lbs.)	14,000	5,365



Site Improvements

- Installation of new entrance signage underway.



- New landscaping will be underway in early 2012.
- New turning lane added near landfill entrance.
- Nine new gas wells installed in 2011, bringing total to 57.

Food Pantry Collection – New Opportunity

The Williamson County Recycling Center is a permanent collection site for non-perishable food donations for the Hutto Food Pantry.



WM Community Engagement

- Provides sponsorships, donations & in-kind services to community organizations.
- Helped create & supports the Keep Hutto Beautiful community garden.
- Sponsored a "Decorate our Hippo" coloring contest.
- Provides landfill tours for boy & girls scouts & other children's groups.
- Waived landfill disposal fees for Leander wildfire victims.
- Distributes newsletters to neighbors.



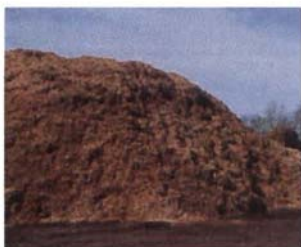
Reminder – Please Tarp Your Load

- Un-tarped loads are subject to a surcharge.
- Tarp requirement fliers are distributed to customers.
- Daily litter pickup on site, as well as along RM1660 and surrounding County roads – exceeds minimum perimeter requirement.
- Portable litter fences are used on site and moved based on wind patterns.



Reminder – Mulch Available for Citizens

- After the holidays, residents were encouraged to drop off their Christmas trees at the Williamson County Landfill to be recycled.



- WM also recycles brush and wood by chipping it into mulch.
- Mulch created from the brush is then offered to County residents free of charge.

