

**SUPPLEMENTAL WORK AUTHORIZATION NO. 1  
TO  
WORK AUTHORIZATION NO. 1**

**WILLIAMSON COUNTY ROAD BOND PROJECT:  
SEWARD JUNCTION SOUTHEAST**

This Supplemental Work Authorization No. 1 to Work Authorization No. 1 is made pursuant to the terms and conditions of the Williamson County Contract for Engineering Services, being dated September 25, 2014 ("Contract") and entered into by and between Williamson County, Texas, a political subdivision of the State of Texas, (the "County") and Aguirre-Fields, LP (the "Engineer").

WHEREAS, the County and the Engineer executed Work Authorization No. 1 dated effective September 26, 2014 (the "Work Authorization");

WHEREAS, pursuant to Article 14 of the Contract, amendments, changes and modifications to a fully executed Work Authorization shall be made in the form of a Supplemental Work Authorization; and

WHEREAS, it has become necessary to amend, change and modify the Work Authorization.

**AGREEMENT**

NOW, THEREFORE, premises considered, the County and the Engineer agree that the Work Authorization shall be amended, changed and modified as follows:

- I. The Services to be Provided by the County that were set out in the original Attachment "A" of the Work Authorization.
- II. The Services to be Provided by the Engineer that were set out in the original Attachment "B" of the Work Authorization are hereby amended, changed and modified as shown in the attached revised Attachment "B-1"
- III. The Work Authorization shall terminate on December 15, 2016. The Services to be Provided by the Engineer shall be fully completed on or before said date unless extended by an additional Supplemental Work Authorization. The revised Work Schedule is attached hereto as Attachment "C-1"
- IV. The maximum amount payable for services under the Work Authorization is hereby increased from \$568,998.00 to \$661,552.00. The revised Fee Schedule is attached hereto as Attachment "D-1".

Except as otherwise amended by prior or future Supplemental Work Authorizations, all other terms of the Work Authorization are unchanged and will remain in full force and effect.

This Supplemental Work Authorization does not waive the parties' responsibilities and obligations provided under the Contract.

**IN WITNESS WHEREOF**, the County and the Engineer have executed this Supplemental Work Authorization, in duplicate, to be effective as of the date of the last party's execution below.

**ENGINEER:** Aguirre & Fields, LP  
Aguirre, LLC - General Partner

By: Christine R. Crosby  
Signature

Christine R. Crosby  
Printed Name

Vice President  
Title

3/24/2016  
Date

**COUNTY:**

By: [Signature]  
Signature

Dan A. Gattis  
Printed Name

County Judge  
Title

04-13-2016  
Date

OK  
7/3/29/2016

#### LIST OF ATTACHMENTS

Attachment B-1, Services to be Provided by Engineer

Attachment C-1, Work Schedule

Attachment D-1, Fee Schedule

**ATTACHMENT B-1  
SUPPLEMENTAL 1 TO WORK AUTHORIZATION 1  
SERVICES TO BE PROVIDED BY THE ENGINEER**

The work to be performed by the Engineer shall consist of providing engineering services required for revising the plans, specifications and estimates (PS&E), and related documents, to reduce the lane configuration from 3 to two lanes, remove the median bio swale and adjust the design for vegetated filter strips. There will be no change to the bridges, ROW or channels. The additional services will include alternative analysis, planning, and design services necessary to prepare a complete bid package using the County Road Bond and other applicable standards.

**GENERAL REQUIREMENTS – no change**

**ROUTE AND DESIGN STUDIES: FUNCTION CODE 110**

**110.1. Route and Design Studies.** The Engineer shall attend and document a meeting for establishing fundamental aspects of a change to the project design. The Engineer, County staff, stakeholders, and technical personnel can discuss and achieve consensus on all project specific considerations including, but not limited to:

1. Alternative Analysis for roadway and drainage design.
  - a. Analyze impacts of reducing lane configuration from 3 to two lanes
  - b. Analyze replacement of Bio-Swales with Vegetative Filter Strips.
2. Evaluate Engineering constraints and considerations.
3. Update project design schedule.
4. Revise all associated base maps and distribute.

**110.2. Geotechnical. – no change**

**SOCIAL, ECONOMIC AND ENVIROMENTAL STUDIES AND PUBLIC INVOLVEMENT:  
FUNCTION CODE 120 – no change**

**RIGHT OF WAY AND UTILITIES: FUNCTION CODE 130 – no change**

**DESIGN SURVEYS AND CONSTRUCTION SURVEYS: FUNCTION CODE 150 – no change**

**ROADWAY DESIGN CONTROLS: FUNCTION CODE 160**

The Engineer shall incorporate the removal of curb and gutter on the median side of CR 259 and CR 266 in locations as directed by the County. The Engineer shall incorporate the reduction of lanes in locations as directed by the County. All other roadway elements are to remain the same. Engineer shall check all notes and callouts for accuracy and placement.

**160.1. Roadway Design.** The Engineer shall update all sheets necessary to incorporate the new design into the geometric base maps, layout and design files.

1. Index Sheet – Engineer shall update with revised plan sheets and standards.

**160.2. Typical Sections.**

1. Proposed Typical Sections – Sections will be updated to reduce pavement width, remove curb and gutter from the median side and replace some bioswale areas with vegetative filter strips.

**160.3. Cross Streets.**

1. Intersection Layouts and Driveway Plan Sheets – Engineer shall revise sheets to incorporate new geometric layout base maps. Cross and Longitudinal slopes will be checked to ensure they still meet criteria.

**160.4. Cut and Fill Quantities.**

1. Earthwork Cross Sections - The Engineer shall re-develop the earthwork files and analysis to determine cut and fill quantities based on the new geometric layout and required slopes to incorporate vegetative filter strips. Engineer shall develop revised design cross section sheets.

**160.5. Plan Preparation.**

1. Roadway Plan & Profile - Sheets will be updated to include the new geometric layout. All callouts and notes will be updated and relocated accordingly.
2. Design Standards & Forms – The Engineer shall review and update, as necessary, the standards and supporting documents.

**160.6. Wetlands Information – no change.****160.7. Pavement Design - no change.****DRAINAGE: FUNCTION CODE 161****161.1. Hydrology and Hydraulics Analyses**

No change

**161.2. Bridge, Culvert, and Storm Sewer Design.** Original interior drainage areas assumed drainage to median curbs and through open-back inlets to a median ditch. Revised design assumes drainage to an uncurbed edge of pavement and over a vegetated filter strip in an interim condition per the items below.

1. Revise interior drainage areas to delineate the catchment areas for each filter strip for water quality calculations and the catchment areas to median crossings or intersections.
2. Revise storm sewer at CR 266 intersection to outfall to outside ditch rather than future median as originally designed.
3. Revise hydraulic data sheets to reflect revised drainage area and storm sewer computations.

**161.3. Layout, Structural Design, and Detailing of Drainage Features.** Original drainage design assumed drainage to median curbs and through open-back inlets to a median ditch. Revised design assumes drainage to an uncurbed edge of pavement and over a vegetated filter strip to an interim condition ditch per the items below.

1. Revise Interior Drainage Area Map and Drainage Plan and Profile Sheets to reflect the removal of the median ditch and implementation of vegetated filter strips.
2. Calculate and verify ditch capacities for the interim ditch that will be needed to capture the flow from the vegetated filter strips.
3. Revise Storm Sewer Lateral Profile Sheet to reflect storm sewer change in 161.2.5.
4. Revise drainage quantities to reflect revised design for the interim condition.

**161.4. Drainage Report.**

1. Revise drainage report to add description of water quality controls using vegetated filter strips.

**161.5. Storm Water Pollution Prevention Plans.** Original SW3P assumed drainage to median curbs and through open-back inlets to a median bio-filtration swale. Revised design assumes drainage to an uncurbed edge of pavement and over a vegetated filter strip to an interim condition ditch per the items below.

1. Revise SW3P plans and quantities to reflect modified grading, cross slopes, ditches, etc.
2. Revise Erosion Control Layout sheets to depict erosion control devices for modified grading, cross slopes, ditches, etc.
3. Revise TSS pollutant load calculations for vegetated filter strip and design filter strip BMPs. The filter strip locations will be depicted on the Drainage P&P sheets.

**161.6. Floodplain Manager Coordination. – no change**

**SIGNING, PAVEMENT MARKINGS AND SIGNALIZATION (PERMANENT); FUNCTION CODE 162**

**162.1. Signing.** The Engineer shall revise all drawings, specifications, and details for all signs. The Engineer shall revise and update:

1. Illustrate and number the proposed signs on plan sheets.
2. Select each sign foundation from State standards.

**162.1. Pavement Marking.** The Engineer shall revise and update plans and details for both permanent and temporary pavement markings and channelization devices on plan sheets.

**MISCELLANEOUS (ROADWAY): FUNCTION CODE 163**

**163.1. Traffic Control Plan, Detours, Sequence of Construction.** The Engineer shall revise and update all Traffic Control Plans (TCP) for the project including the written narrative of construction sequencing, the phased traffic control plan, and all applicable standards. TCP construction phase narrative, typical sections, and phase plan sheets will all require revisions to call outs, hatching and line work.

**163.2. Compute and Tabulate Quantities.**

1. The Engineer shall update all quantities and summary sheets as needed.

**163.3. Miscellaneous Structural Details. – no change**

**163.4. Estimate.**

1. The Engineer shall update and revise quantities necessary to construct contract in standard bid format at the specified milestones and Final PS&E submittals.

**163.5. Specifications and General Notes.**

1. The Engineer shall update and revise the construction time determination schedule incorporating the revised geometric layout.

**163.6. Project Construction Manual (PCM). – no change**

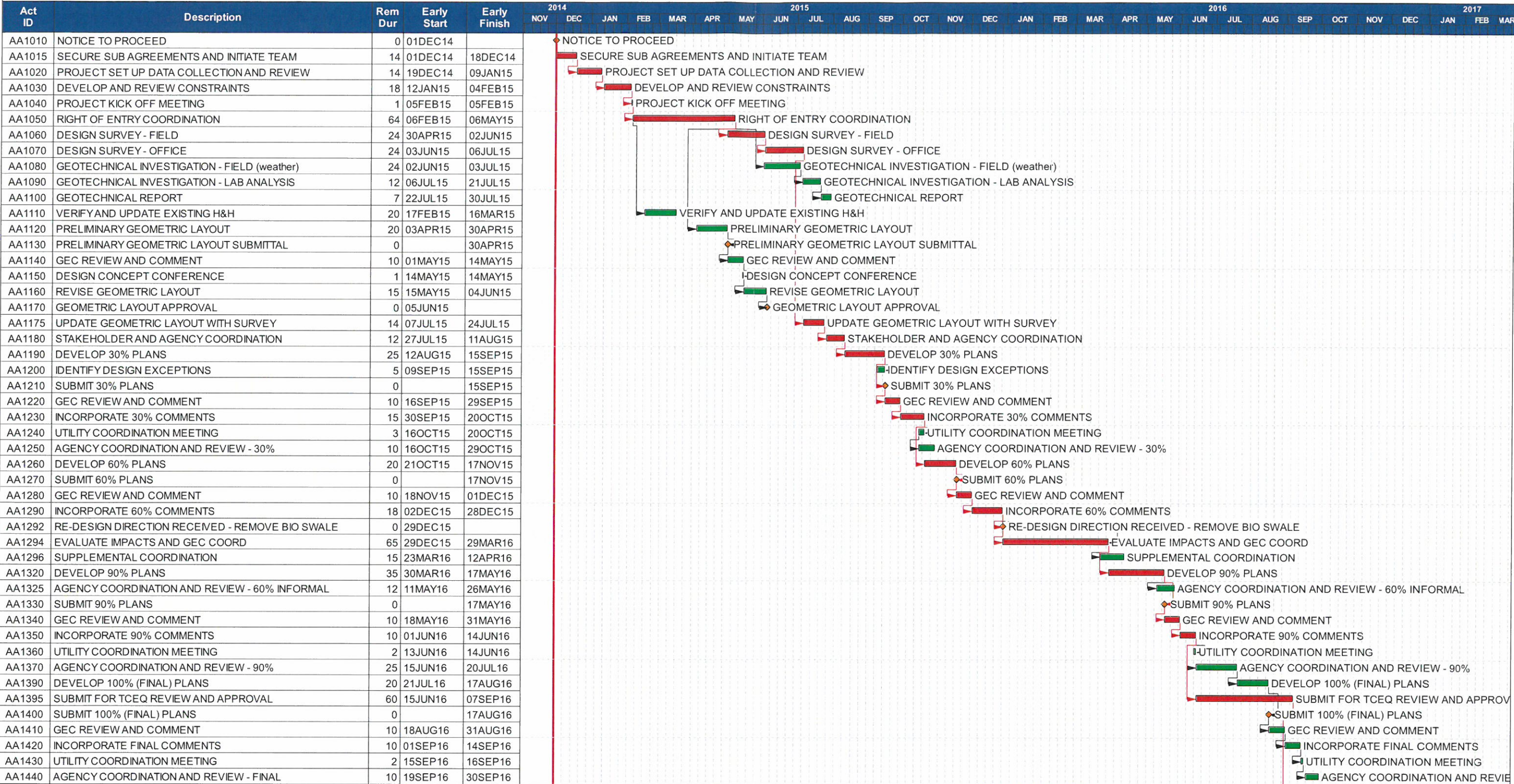
**CONTRACT MANAGEMENT AND ADMINISTRATION: FUNCTION CODE 164 PS&E**

1. The Engineer shall attend additional meetings with the county and GEC to determine geometry for updated geometric layout and document all correspondence.
2. The Engineer shall coordinate geometric layout revision updates with subconsultants.
3. The Engineer shall coordinate, review, assemble, and submit supplemental work authorization documents.

**BRIDGE DESIGN: FUNCTION CODE 170 – no change**

ATTACHMENT C-1  
WORK SCHEDULE

SEWARD JUNCTION SOUTHEAST  
SWA#1 to WA#1



Start date	01DEC14	Early bar
Finish date	06DEC16	Progress bar
Data date	01DEC14	Critical bar
Run date	11MAR16	Summary bar
Page number	1A	Start milestone point
		Finish milestone point
© Primavera Systems, Inc.		

AGUIRRE & FIELDS, LP




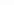


WILLIAMSON COUNTY, TEXAS  
PRECINCT 2  
SEWARD JUNCTION SOUTHEAST

SUPPLEMENTAL WORK AUTHORIZATION 1  
to WORK AUTHORIZATION NO. 1

ATTACHMENT C-1  
WORK SCHEDULE

SEWARD JUNCTION SOUTHEAST  
SWA#1 to WA#1[illegible]

Start date	01DEC14
Finish date	06DEC16
Data date	01DEC14
Run date	11MAR16
Page number	2A

-  Early bar
-  Progress bar
-  Critical bar
-  Summary bar
-  Start milestone point
-  Finish milestone point

AGUIRRE &amp; FIELDS, LP

WILLIAMSON COUNTY, TEXAS  
PRECINCT 2  
SEWARD JUNCTION SOUTHEAST

SUPPLEMENTAL WORK AUTHORIZATION 1  
to WORK AUTHORIZATION NO. 1

FEE SCHEDULE SUMMARY

Project	AFLP	CP&Y	BOWMAN	TERRACON	Total
WA 1	\$58,011.00	\$34,543.00	\$0.00	\$0.00	\$92,554.00

FC	TASK NAME	AFLP	CP&Y	BOWMAN	TC	TOTAL
FC 110	ROUTE AND DESIGN STUDIES (FC110)	\$13,338.00				\$13,338.00
FC 120	ENVIRONMENTAL STUDIES AND PUBLIC INVOLVEMENT (FC 120)					\$0.00
FC 130	RIGHT OF WAY DATA & UTILITIES (FC 130)					\$0.00
FC 150	FIELD SURVEYING (FC 150)					\$0.00
FC 160	ROADWAY DESIGN CONTROLS (FC 160)	\$14,715.00				\$14,715.00
FC 161	DRAINAGE (FC 161)		\$34,543.00			\$34,543.00
FC 162	SIGNING, PVMT. MARK., & SIGNALS (FC162)	\$4,764.00				\$4,764.00
FC 163	MISCELLANEOUS (ROADWAY) (FC 163)	\$13,710.00				\$13,710.00
FC 164	MANAGING CONTRACTED PER SERVICES & SURVEY CONTRACTS (FC 164)	\$11,484.00				\$11,484.00
FC 170	BRIDGE DESIGN (FC 170)					\$0.00
FC 309	BID PHASE SERVICES (FC 309)					\$0.00
DIRECT	DIRECT EXPENSES	\$0.00				\$0.00
TOTAL		\$58,011.00	\$34,543.00	\$0.00	\$0.00	\$92,554.00

TASK DESCRIPTION	SENIOR PROJECT MANAGER	PROJECT MANAGER	QUALITY MANAGER	SENIOR ENGINEER	STRUCT ENGINEER	PROJECT ENGINEER	ENGINEER IN TRAINING	SENIOR ENGINEER TECHNICIAN	SENIOR CADD OPERATOR	CADD OPERATOR	ADMIN / CLERICAL	TOTAL LABOR HOURS & COSTS	NO OF DWGS	LABOR HRS PER SHEET
ROUTE AND DESIGN STUDIES (FC 110)														
110.1. ROUTE AND DESIGN STUDIES														
1. ALTERNATIVE ANALYSIS (BIO-SWALE VS V.F.S & COST ESTIMATE)	2	2				28		4			4	40	N/A	N/A
2. EVALUATE ENGINEERING CONSTRAINTS AND CONSIDERATIONS		2		2		6						10	N/A	N/A
3. UPDATE PROJECT DESIGN SCHEDULE		2				3						5	N/A	N/A
4. GEOMETRIC LAYOUT-REVISE ALL ASSOCIATED BASE MAPS (only)		2		4		24	8	4		8		50	N/A	N/A
110.2. GEOTECHNICAL-no change														
HOURS SUB-TOTALS	2	8	0	6	0	61	8	8	0	8	4	105		
CONTRACT RATE PER HOUR	\$201.00	\$168.00	\$159.00	\$150.00	\$168.00	\$132.00	\$102.00	\$126.00	\$84.00	\$66.00	\$72.00			
TOTAL LABOR COSTS	\$402.00	\$1,344.00	\$0.00	\$900.00	\$0.00	\$8,052.00	\$816.00	\$1,008.00	\$0.00	\$528.00	\$288.00	\$13,338.00		
% DISTRIBUTION OF STAFFING	1.9%	7.6%	0.0%	5.7%	0.0%	58.1%	7.6%	7.6%	0.0%	7.6%	3.8%			
SUBTOTAL (FC 110)												\$13,338.00		

TASK DESCRIPTION	SENIOR PROJECT MANAGER	PROJECT MANAGER	QUALITY MANAGER	SENIOR ENGINEER	STRUCT ENGINEER	PROJECT ENGINEER	ENGINEER IN TRAINING	SENIOR ENGINEER TECHNICIAN	SENIOR CADD OPERATOR	CADD OPERATOR	ADMIN / CLERICAL	TOTAL LABOR HOURS & COSTS	NO OF DWGS	LABOR HRS PER SHEET
RIGHT OF WAY AND UTILITIES (FC 130) - no change														
													N/A	N/A

TASK DESCRIPTION	SENIOR PROJECT MANAGER	PROJECT MANAGER	QUALITY MANAGER	SENIOR ENGINEER	STRUCT ENGINEER	PROJECT ENGINEER	ENGINEER IN TRAINING	SENIOR ENGINEER TECHNICIAN	SENIOR CADD OPERATOR	CADD OPERATOR	ADMIN / CLERICAL	TOTAL LABOR HOURS & COSTS	NO OF DWGS	LABOR HRS PER SHEET
ROADWAY DESIGN CONTROLS (FC160)														
160.1. ROADWAY DESIGN:														
1. UPDATE INDEX SHEET (1 SHEET)		1		1		1				1		4	1	4
160.2. TYPICAL SECTIONS:														
1. UPDATE PROPOSED TYPICAL SECTIONS (4 SHEETS)	1	1		1		8	9			10		30	4	8
160.3. CROSS STREETS:														
1. UPDATE INTERSECTION LAYOUTS & DRIVEWAY PLAN (9 SHTS)		1		1		4	6	2		6		20	9	2
160.4. CUT AND FILL QUANTITIES:														
1. UPDATE EARTHWORK CROSS SECTIONS		1		2		4	8	16		16		47	18	3
160.5. PLAN PREPARATION:														
1. UPDATE ROADWAY PLAN AND PROFILE (14 SHTS)	1	1		2		12				16		32	14	2
2. UPDATE DESIGN STANDARDS & FORMS (DSR, DESIGN CHECKLISTS, ETC)	1			1		2				2		6	N/A	N/A
HOURS SUB-TOTALS	3	5	0	8	0	31	23	18	0	51	0	139	46	
CONTRACT RATE PER HOUR	\$201.00	\$168.00	\$159.00	\$150.00	\$168.00	\$132.00	\$102.00	\$126.00	\$84.00	\$66.00	\$72.00			
TOTAL LABOR COSTS	\$603.00	\$840.00	\$0.00	\$1,200.00	\$0.00	\$4,092.00	\$2,346.00	\$2,268.00	\$0.00	\$3,366.00	\$0.00	\$14,715.00		
% DISTRIBUTION OF STAFFING	2.2%	3.6%	0.0%	5.8%	0.0%	22.3%	16.5%	12.9%	0.0%	36.7%	0.0%			
SUBTOTAL (FC 160)												\$14,715.00		

TASK DESCRIPTION	SENIOR PROJECT MANAGER	PROJECT MANAGER	QUALITY MANAGER	SENIOR ENGINEER	STRUCT ENGINEER	PROJECT ENGINEER	ENGINEER IN TRAINING	SENIOR ENGINEER TECHNICIAN	SENIOR CADD OPERATOR	CADD OPERATOR	ADMIN / CLERICAL	TOTAL LABOR HOURS & COSTS	NO OF DWGS	LABOR HRS PER SHEET
<b>SIGNING AND PVMT. MARKING (FC162) - no change</b>														
UPDATE AND REVISE SIGNING AND PAVEMENT MARKING LAYOUTS (1"=50' DBL BANK)		1		1		2	4	4	6	12		30	6	5
UPDATE AND REVISE SIGNING, & PAVEMENT MARKING QUANTITIES & SUMMARY SHEETS		1		1		1	2	1	2	3		11	2	6
UPDATE AND REVISE SIGNING & PAVEMENT MARKING DETAILS						1	2	1	2	3		9	2	5
NO SIGNALS ANTICIPATED														
HOURS SUB-TOTALS	0	2	0	2	0	4	8	6	10	18	0	50	8	
CONTRACT RATE PER HOUR	\$201.00	\$168.00	\$159.00	\$150.00	\$168.00	\$132.00	\$102.00	\$126.00	\$84.00	\$66.00	\$72.00			
TOTAL LABOR COSTS	\$0.00	\$336.00	\$0.00	\$300.00	\$0.00	\$528.00	\$816.00	\$756.00	\$840.00	\$1,188.00	\$0.00	\$4,764.00		
% DISTRIBUTION OF STAFFING	0.0%	4.0%	0.0%	4.0%	0.0%	8.0%	16.0%	12.0%	20.0%	36.0%	0.0%			
<b>SUBTOTAL (FC 162)</b>												<b>\$4,764.00</b>		

TASK DESCRIPTION	SENIOR PROJECT MANAGER	PROJECT MANAGER	QUALITY MANAGER	SENIOR ENGINEER	STRUCT ENGINEER	PROJECT ENGINEER	ENGINEER IN TRAINING	SENIOR ENGINEER TECHNICIAN	SENIOR CADD OPERATOR	CADD OPERATOR	ADMIN / CLERICAL	TOTAL LABOR HOURS & COSTS	NO OF DWGS	LABOR HRS PER SHEET
<b>MISCELLANEOUS (ROADWAY) (FC 163)</b>														
SEQUENCE OF CONSTRUCTION NARRATIVE / TYPICAL SECTIONS		1				3	4	2	4	6		20	3	7
TCP PLAN LAYOUTS (2 PHASE - 6 SHEETS PER PHASE)		2		2		4	8	4	8	12		40	12	3
TCP DETAILS (US 183 & SH 29 INT, AND CR INT)		1		1		1	2	1	2	4		12	3	4
<b>163.2. COMPUTE AND TABULATE QUANTITIES:</b>														
1. UPDATE QUANTITIES AND SUMMARY SHEETS (9 SHTS)		2		2		8	10	2	4	8		36	N/A	N/A
<b>163.4. ESTIMATE:</b>														
1. UPDATE CONSTRUCTION COST EST. (90, 95 & FINAL)		2		2		4	6					14	N/A	N/A
<b>163.5. SPECIFICATIONS AND GENERAL NOTES:</b>														
1. UPDATE CONSTRUCTION TIME DETERMINATION		1		1		2	4					8	N/A	N/A
	0	9	0	8	0	22	34	9	18	30	0	130	0	
CONTRACT RATE PER HOUR	\$201.00	\$168.00	\$159.00	\$150.00	\$168.00	\$132.00	\$102.00	\$126.00	\$84.00	\$66.00	\$72.00			
TOTAL LABOR COSTS	\$0.00	\$1,512.00	\$0.00	\$1,200.00	\$0.00	\$2,904.00	\$3,468.00	\$1,134.00	\$1,512.00	\$1,980.00	\$0.00	\$13,710.00		
% DISTRIBUTION OF STAFFING	0.0%	6.9%	0.0%	6.2%	0.0%	16.9%	26.2%	6.9%	13.8%	23.1%	0.0%			
<b>SUBTOTAL (FC 163)</b>												<b>\$13,710.00</b>		

TASK DESCRIPTION	SENIOR PROJECT MANAGER	PROJECT MANAGER	QUALITY MANAGER	SENIOR ENGINEER	STRUCT ENGINEER	PROJECT ENGINEER	ENGINEER IN TRAINING	SENIOR ENGINEER TECHNICIAN	SENIOR CADD OPERATOR	CADD OPERATOR	ADMIN / CLERICAL	TOTAL LABOR HOURS & COSTS	NO OF DWGS	LABOR HRS PER SHEET
<b>MANAGING CONTRACT PER SERVICES &amp; SURVEY CONTRACTS (FC 164)</b>														
DESIGN COORDINTION AND UPDATES MEETINGS (3 each)		8		8		8					8	32	N/A	N/A
PROJECT MANAGEMENT & COORD W/ COUNTY & GEC (10HRS/M FOR 3 MONTHS)		8		8		8					8	32	N/A	N/A
PROJECT MANAGEMENT & COORDINATION WITH SUBCONSULTANTS		6		6		6					6	24	N/A	N/A
HOURS SUB-TOTALS	0	22	0	22	0	22	0	0	0	0	22	88		
CONTRACT RATE PER HOUR	\$201.00	\$168.00	\$159.00	\$150.00	\$168.00	\$132.00	\$102.00	\$126.00	\$84.00	\$66.00	\$72.00			
TOTAL LABOR COSTS	\$0.00	\$3,696.00	\$0.00	\$3,300.00	\$0.00	\$2,904.00	\$0.00	\$0.00	\$0.00	\$0.00	\$1,584.00	\$11,484.00		
% DISTRIBUTION OF STAFFING	0.0%	25.0%	0.0%	25.0%	0.0%	25.0%	0.0%	0.0%	0.0%	0.0%	25.0%			
<b>SUBTOTAL (FC 164)</b>												<b>\$11,484.00</b>		

TASK DESCRIPTION	SENIOR PROJECT MANAGER	PROJECT MANAGER	QUALITY MANAGER	SENIOR ENGINEER	STRUCT ENGINEER	PROJECT ENGINEER	ENGINEER IN TRAINING	SENIOR ENGINEER TECHNICIAN	SENIOR CADD OPERATOR	CADD OPERATOR	ADMIN / CLERICAL	TOTAL LABOR HOURS & COSTS	NO OF DWGS	LABOR HRS PER SHEET
BRIDGE DESIGN (FC 170) - no change														

TASK DESCRIPTION	SENIOR PROJECT MANAGER	PROJECT MANAGER	QUALITY MANAGER	SENIOR ENGINEER	STRUCT ENGINEER	PROJECT ENGINEER	ENGINEER IN TRAINING	SENIOR ENGINEER TECHNICIAN	SENIOR CADD OPERATOR	CADD OPERATOR	ADMIN / CLERICAL	TOTAL LABOR HOURS & COSTS	NO OF DWGS	LABOR HRS PER SHEET
BID PHASE SERVICES (FC 309) - no change														

SUMMARY	SENIOR PROJECT MANAGER	PROJECT MANAGER	QUALITY MANAGER	SENIOR ENGINEER	STRUCT ENGINEER	PROJECT ENGINEER	ENGINEER IN TRAINING	SENIOR ENGINEER TECHNICIAN	SENIOR CADD OPERATOR	CADD OPERATOR	ADMIN / CLERICAL	
% UTILIZATION	1.0%	10.8%	0.0%	10.7%	0.0%	30.6%	12.6%	6.9%	3.5%	16.8%	7.2%	100.0%
FUNCTION CODE											TOTAL HOURS BY FC	TOTAL COSTS BY FC
ROUTE AND DESIGN STUDIES (FC110)											105	\$13,338.00
ENVIRONMENTAL STUDIES AND PUBLIC INVOLVEMENT (FC 120)											0	\$0.00
RIGHT OF WAY DATA (FC 130)											0	\$0.00
ROADWAY DESIGN CONTROLS (FC 160)											139	\$14,715.00
SIGNING, PVMT. MARK., & SIGNALS (FC162)											50	\$4,764.00
MISCELLANEOUS (ROADWAY) (FC 163)											130	\$13,710.00
MANAGING CONTRACTED PER SERVICES & SURVEY CONTRACTS (FC 164)											88	\$11,484.00
BRIDGE DESIGN (FC 170)											0	\$0.00
BID PHASE SERVICES (FC 309)											0	\$0.00
SUBTOTAL LABOR EXPENSES											512	\$58,011.00
OTHER DIRECT EXPENSES	# OF UNITS	COST/UNIT										
Mileage (# of miles) (current state rate) (2 additional meetings)	0	0.56	MILE									\$0.00
Per diem	0	30	DAY									\$0.00
Overnight Mail (letter size) (each)	0	15	EACH									\$0.00
Overnight Mail (oversized box) (each)	0	25	EACH									\$0.00
PHOTOCOPIES (11"X17") (4/SUBMITTAL X 4 SUB)	0	0.15	EACH									\$0.00
Project Construction Manual (15 copies X 350 pages)	0	0.1	EACH									\$0.00
SUBTOTAL DIRECT EXPENSES												\$0.00

TOTALS	
TOTAL COSTS FOR PRIME ONLY	\$58,011.00
NON-SALARY (OTHER DIRECT EXPENSES) FOR PRIME ONLY	\$0.00
AFLP TOTAL	\$58,011.00

Seward Junction Southeast US 183 / CR 259 to SH 29 / CR 266 Williamson County															
Fee Schedule/Budget for CP&Y, Inc.															
Task Description	No. of Sheets	Project Manager	Senior Engineer	Project Engineer	Design Engineer	E.I.T.	Senior CADD Operator	Chief Hydrologist	Environ Manager	Senior Environ Specialist	Environ Specialist	GIS Specialist	Admin / Clerical	Total Labor Hours	Total Direct Labor Costs
		\$214.00	\$177.00	\$145.00	\$119.00	\$92.00	\$108.00	\$184.00	\$168.00	\$116.00	\$92.00	\$84.00	\$70.00		
FC 161 - DRAINAGE															
161.2 BRIDGE, CULVERT, AND STORM SEWER DESIGN															
1	REVISE INTERIOR DRAINAGE AREAS	N/A	-	1	-	8	21	-	-	-	-	-	-	30	\$ 3,061.00
2	REVISE STORM SEWER AT CR 266 INTERSECTION	N/A	-	-	2	2	4	-	-	-	-	-	-	8	\$ 896.00
3	REVISE HYDRAULIC DATA SHEETS	2	-	-	3	5	8	-	-	-	-	-	-	16	\$ 1,766.00
161.3 LAYOUT, STRUCTURAL DESIGN, AND DETAILING OF DRAINAGE FEATURES															
1	REVISE INTERIOR DA MAPS AND P&P SHEETS	14	-	8	-	24	36	8	-	-	-	-	-	76	\$ 8,448.00
2	CALCULATE CAPACITIES FOR INTERIM DITCH	N/A	-	2	-	10	14	8	-	-	-	-	-	34	\$ 3,696.00
3	REVISE STORM SEWER LATERAL PROFILE	1	-	1	-	3	8	4	-	-	-	-	-	16	\$ 1,702.00
4	REVISE DRAINAGE QUANTITIES	1	-	1	-	3	4	2	-	-	-	-	-	10	\$ 1,118.00
161.4 DRAINAGE REPORT															
1	REVISE DRAINGE REPORT FOR INTERIM WATER QUALITY	N/A	-	1	-	2	3	-	-	-	-	-	-	6	\$ 691.00
161.5 STORM WATER POLLUTION PREVENTION PLANS															
1	REVISE SW3P PLANS AND QUANTITIES	3	-	1	-	4	12	-	-	-	-	-	-	17	\$ 1,757.00
2	REVISE EROSION CONTROL LAYOUTS	14	-	6	-	18	52	-	-	-	-	-	-	76	\$ 7,988.00
3	REVISE TSS CALCS AND DESIGN VEGETATED FILTER STRIPS	N/A	-	4	4	4	18	-	-	-	-	-	-	30	\$ 3,420.00
FC 161 - SUBTOTALS															
HOURS SUBTOTALS			0	25	9	83	180	22	0	0	0	0	0	319	
LABOR COST SUBTOTALS			\$ -	\$ 4,425.00	\$ 1,305.00	\$ 9,877.00	\$ 16,560.00	\$ 2,376.00	\$ -	\$ -	\$ -	\$ -	\$ -		\$ 34,543.00
SUBTOTAL LABOR COSTS															\$ 34,543.00