

**SUPPLEMENTAL WORK AUTHORIZATION NO. 2  
TO  
WORK AUTHORIZATION NO. 1**

**WILLIAMSON COUNTY PROJECT:  
Engineering Design Services for the repair of San Gabriel Ranch Road**

This Supplemental Work Authorization No. 2 to Work Authorization No. 1 is made pursuant to the terms and conditions of the Williamson County Contract for Engineering Services, being dated April 07, 2016 ("Contract") and entered into by and between Williamson County, Texas, a political subdivision of the State of Texas, (the "County") and Freese and Nichols, Inc. (the "Engineer").

WHEREAS, the County and the Engineer executed Work Authorization No. 1 dated effective April 12, 2016 (the "Work Authorization");

WHEREAS, pursuant to the Contract, amendments, changes and modifications to a fully executed Work Authorization shall be made in the form of a Supplemental Work Authorization; and

WHEREAS, it has become necessary to amend, change and modify the Work Authorization.

**AGREEMENT**

NOW, THEREFORE, premises considered, the County and the Engineer agree that the Work Authorization shall be amended, changed and modified as follows:

- I. The Services to be Provided by the Engineer that were set out in the original Attachment "B" of the Work Authorization are hereby amended, changed and modified as shown in the attached revised Attachment "B".
- II. The maximum amount payable for services under the Work Authorization is hereby increased from \$533,524.00 to \$551,106.00.
- III. The revised Work Schedule is attached hereto as Attachment "C".
- IV. The revised Fee Schedule is attached hereto as Attachment "D".

County believes it has sufficient funds currently available and authorized for expenditure to finance the costs of this Supplemental Work Authorization. Engineer understands and agrees that County's payment of amounts under this Supplemental Work Authorization is contingent on the County receiving appropriations or other expenditure authority sufficient to allow the County, in the exercise of reasonable administrative discretion, to continue to make payments under the Supplemental Work Authorization. It is further understood and agreed by Engineer that County shall have the right to terminate this Supplemental Work Authorization at the end of any County fiscal year if the governing body of County does not appropriate sufficient funds as determined by

County's budget for the fiscal year in question. County may effect such termination by giving written notice of termination to Engineer.

Except as otherwise amended by prior or future Supplemental Work Authorizations, all other terms of the Work Authorization are unchanged and will remain in full force and effect.

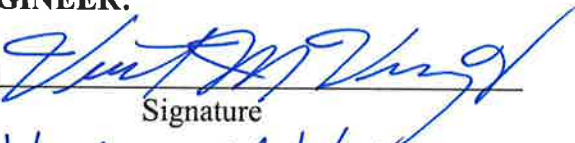
This Supplemental Work Authorization does not waive the parties' responsibilities and obligations provided under the Contract.

**IN WITNESS WHEREOF**, the County and the Engineer have executed this Supplemental Work Authorization, in duplicate, to be effective as of the date of the last party's execution below.

EXECUTED this \_\_\_\_ day of \_\_\_\_\_, 20\_\_.

**ENGINEER:**

By:



Signature

Victor M. Vasquez

Printed Name

Principal

Title

7-14-17

Date

**COUNTY:**

By:



Signature

Dan Gattis

Printed Name

County Judge

Title

07-27-2017

Date

## LIST OF ATTACHMENTS

Attachment B - Services to be Provided by Engineer

Attachment C - Work Schedule

Attachment D - Fee Schedule

## Attachment B - Services to be Provided by Engineer

FNI will provide the following services related to the relocation of the existing waterline, in addition to the current contract scope:

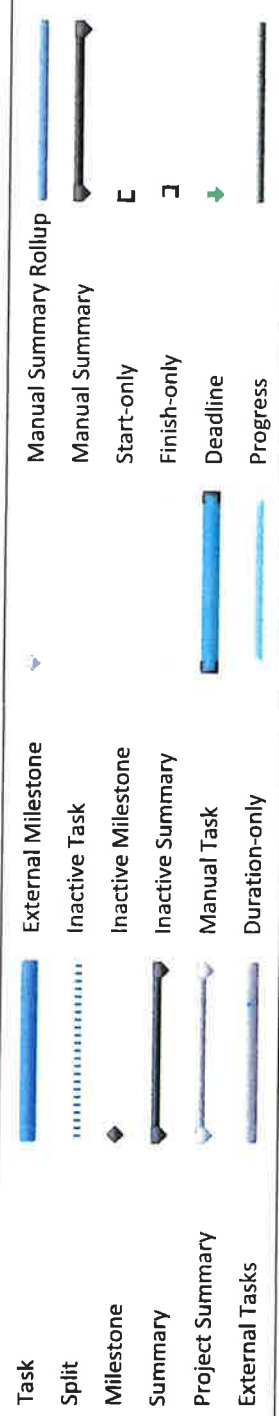
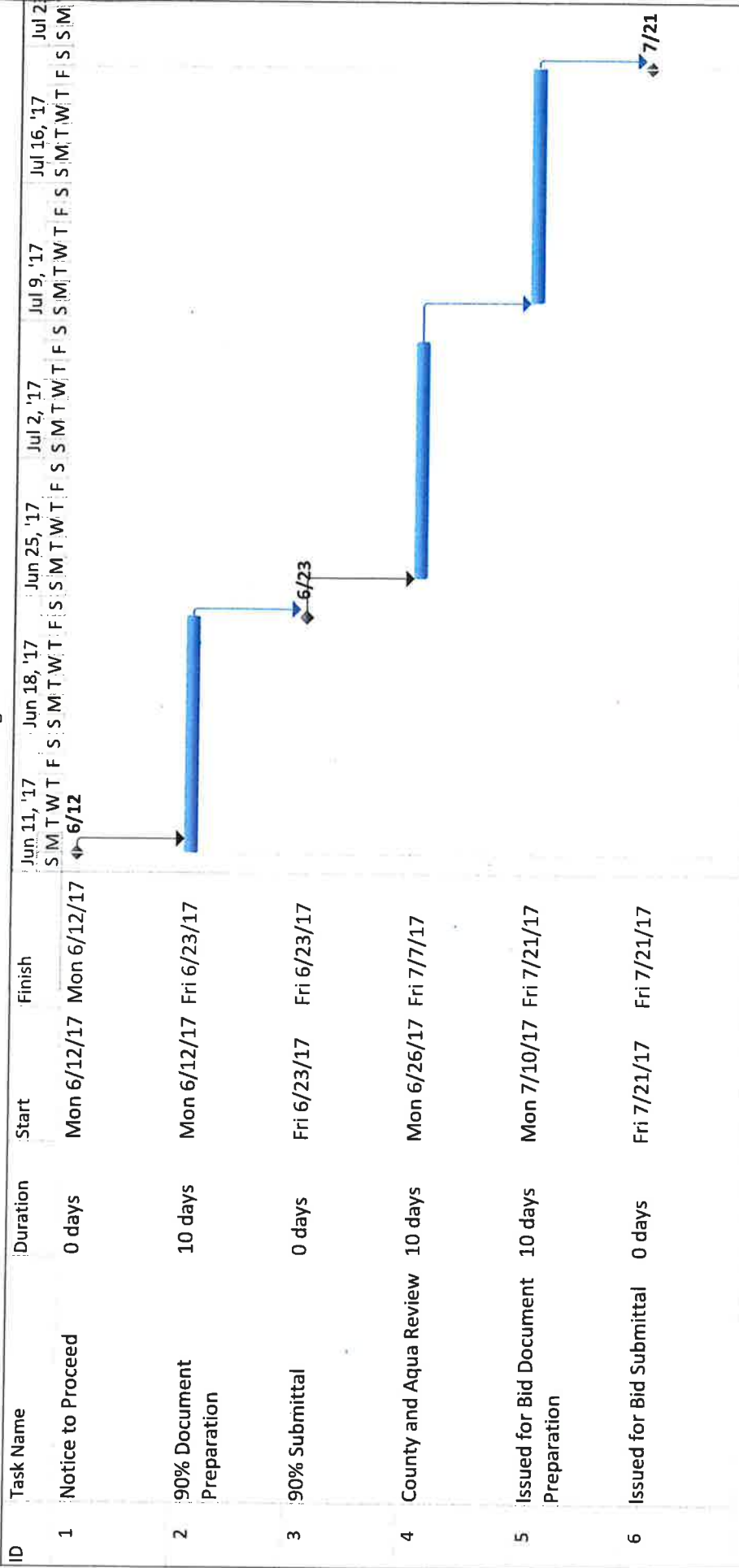
1. Document Review- FNI will review as-builts for the existing 6-inch waterline as well as the proposed San Gabriel Ranch Road Dam Removal design documents.
2. Coordination with Aqua Texas – FNI will coordinate with Aqua Texas on preferences for design and installation of the waterline in San Gabriel Ranch Road including suspension from the proposed San Gabriel Ranch Road bridge.
3. 90% Design Document Preparation – FNI will produce 90% plans and specifications to be included in the San Gabriel Ranch Road Dam Removal design package. The design documents will be for buried and aerial pipe (suspended from the bridge).
4. Issued for Bid Design Document Preparation – FNI will incorporate comments from Williamson County and Aqua Texas into the 90% design documents and finalize plans and specifications for the waterline.
5. Opinion of Probable Construction Cost (OPCC) – FNI will provide an OPCC for the waterline relocation based on quantities established in the design documents.
6. Bid Phase Services – FNI will respond to questions during the bid phase related to the waterline relocation.

FNI assumes the following related to design services associated with the waterline relocation:

1. The length of waterline will not exceed 600 LF.
2. Aqua Texas will provide as-builts for the existing waterline.
3. Aqua Texas will provide standard details and specifications that they would like included in the design documents.
4. There will be no addenda provided for the waterline relocation during the bid phase.

Attachment C - Work Schedule (see attached schedule)

San Gabriel Ranch Road Dam Removal  
Waterline Relocation Design Schedule



Project: SGRR Waterline Schedule  
Date: Fri 6/9/17

Attachment D - Fee Schedule (see attached cost breakdown)

**Williamson County  
Amendment No. 2 - San Gabriel Ranch Road Dam Removal - Amendment No. 2 - Waterline Relocation  
5/25/2017  
Detailed Cost Breakdown**

<b>Project Fee Summary</b>	
Basic Services	17,562
Special Services	-
<b>Total Project</b>	<b>17,562</b>

Phase	Task	Basic Services										Total Labor Effort	Total Expense Effort	Total Sub Effort	Total Effort				
		Tasks ↓	Current Hourly Bill Rate →	Project Role	Professional 4	Professional 4	Designer 3	Professional 4	Professional 4	Construction Manager 4	CAD Technician					Total Hours			
1	Document Review		\$178		\$178		\$153		\$178		\$173		\$96		3	\$ 534	\$ 26	\$ -	\$ 560
2	Coordination with Aqua Texas		2		3		4		4						6	\$ 1,068	\$ 51	\$ -	\$ 1,119
3	90% Design Document Prep		4		8		24		3		6		24		65	\$ 2,002	\$ 553	\$ -	\$ 2,555
4	Issued for Bid Design Document Prep		8		8		12		2				12		34	\$ 4,768	\$ 289	\$ -	\$ 5,057
5	OPCC		1								3				4	\$ 697	\$ 34	\$ -	\$ 731
6	Bid Phase Services		3		3										3	\$ 534	\$ 26	\$ -	\$ 560
<b>Total Basic Services Hours</b>			2		27		36		3		8		36		115	\$ 16,603	\$ 979	\$ -	\$ 17,582
<b>Total Basic Services Labor Effort</b>			\$ 356		\$ 4,806		\$ 5,508		\$ 534		\$ 1,424		\$ 3,456		\$ -	\$ -	\$ -	\$ -	\$ -

Phase	Task	Expenses	Tech Charge	Miles	Meals	Hotel	B&W (sheet)	Color (sheet)	Blinding (each)	Lg Format - Bond - B&W (sq. ft.)	Lg Format - Glossy/Mylar - B&W (sq. ft.)	Other	Other	Total Exp Effort
2	Coordination with Aqua Texas	6												\$ 51
3	90% Design Document Prep	65												\$ 553
4	Issued for Bid Design Document Prep	34												\$ 289
5	OPCC	4												\$ 34
6	Bid Phase Services	3												\$ 26
<b>Total Basic Services Items</b>		115												\$ 979
<b>Total Basic Services Expenses Effort</b>		\$ 978												\$ -

Phase	Task	Subconsultants	[Name 1]	[Name 2]	[Name 3]	[Name 4]	Total Sub Effort
2	Coordination with Aqua Texas						\$ -
3	90% Design Document Prep						\$ -
4	Issued for Bid Design Document Prep						\$ -
5	OPCC						\$ -
6	Bid Phase Services						\$ -
<b>Total Basic Services Subconsultants Cost</b>							\$ -
<b>Total Basic Services Subconsultants Effort</b>							\$ -