



Williamson County Commissioners Court

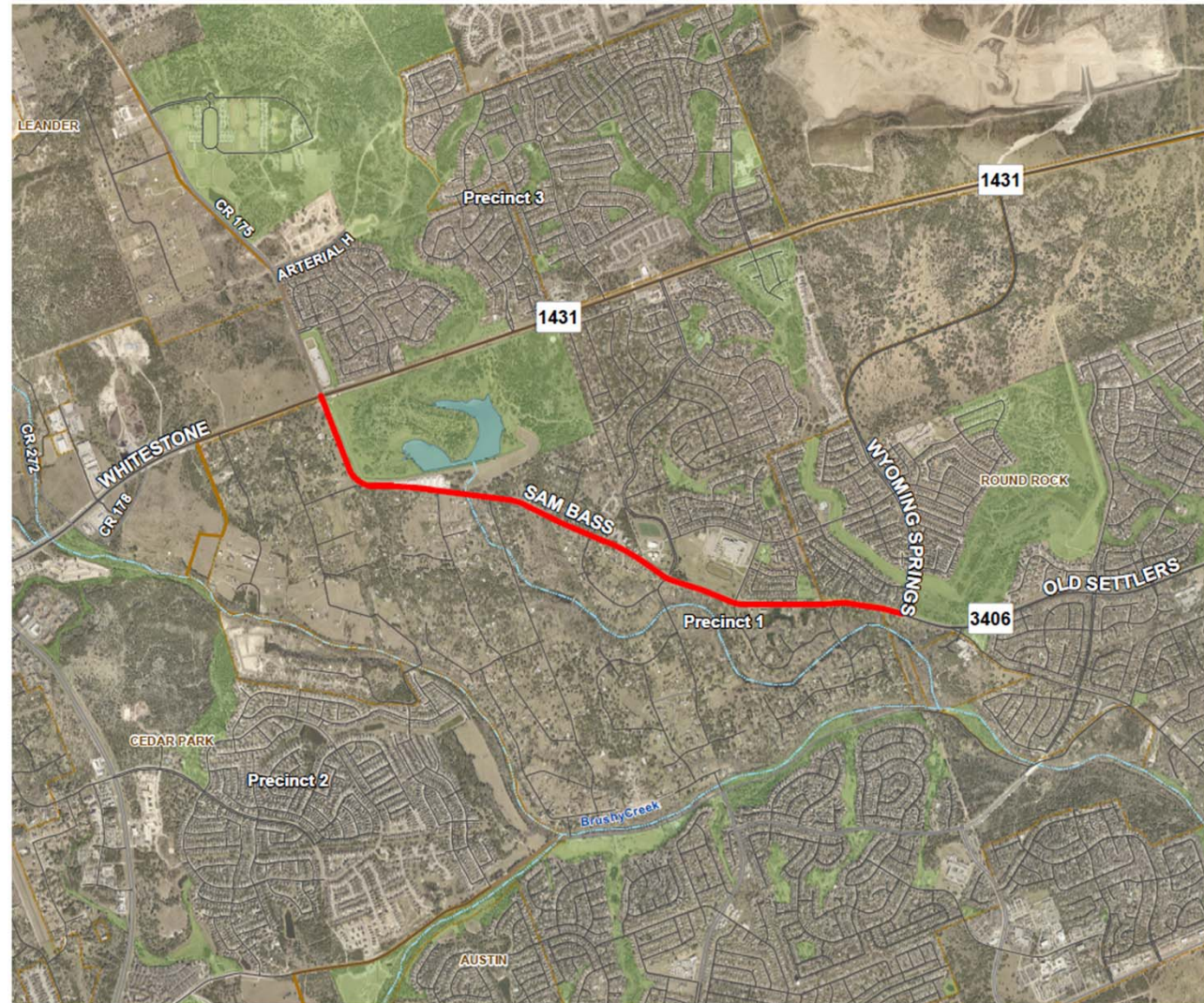
Corridor Program Update
December 12, 2017



PRIME
STRATEGIES,
INC.



Corridor H – Sam Bass Road



Corridor H – Sam Bass Road

Study Limits: Sam Bass Road from RM 1431
to Wyoming Springs Drive

Engineer: K Friese & Associates



Major Activities to Date:

- 1st Open House: June 21, 2017

Upcoming Anticipated Activities:

- Traffic Projections to be completed early 2018
- Evaluate and identify potential improvements
- 2nd Open House in 2018 with proposed improvements

Corridor F – US 183



Corridor F – US 183

Study Limits: US 183 from Williamson /
Burnet County Line to SH 29

Engineer: CP&Y



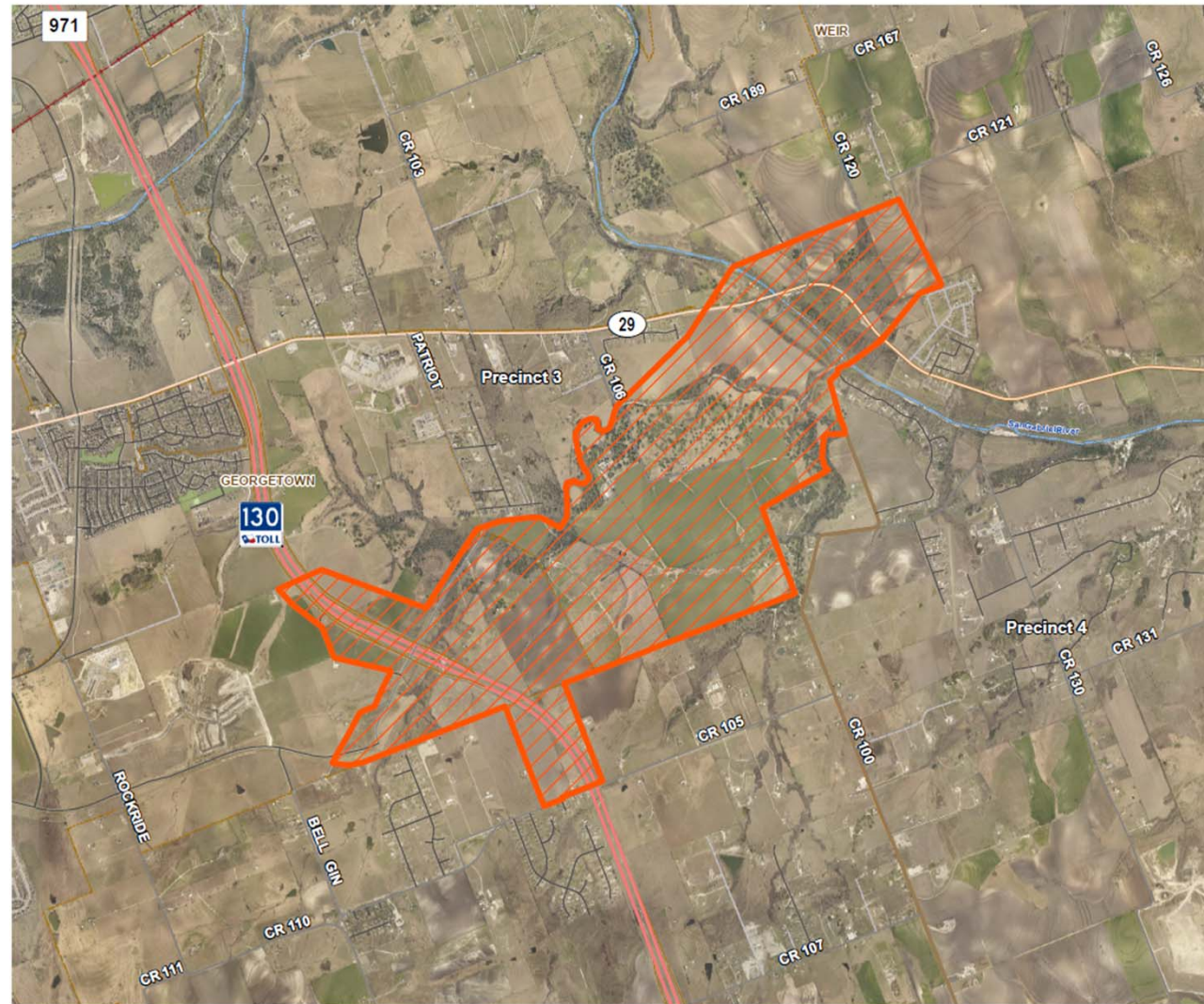
Major Activities to Date:

- 1st Open House: July 13, 2017
- 2nd Open House: November 16, 2017

Upcoming Anticipated Activities:

- Develop potential route concepts and determine the preferred route concept
- 3rd Open House in Summer 2018 with preferred route concept

Corridor C – SH 29 Bypass



Corridor C – SH 29 Bypass

Study Limits: SH 29 Bypass from Sam Houston Blvd at Patriot Way to SH 29

Engineer: Atkins



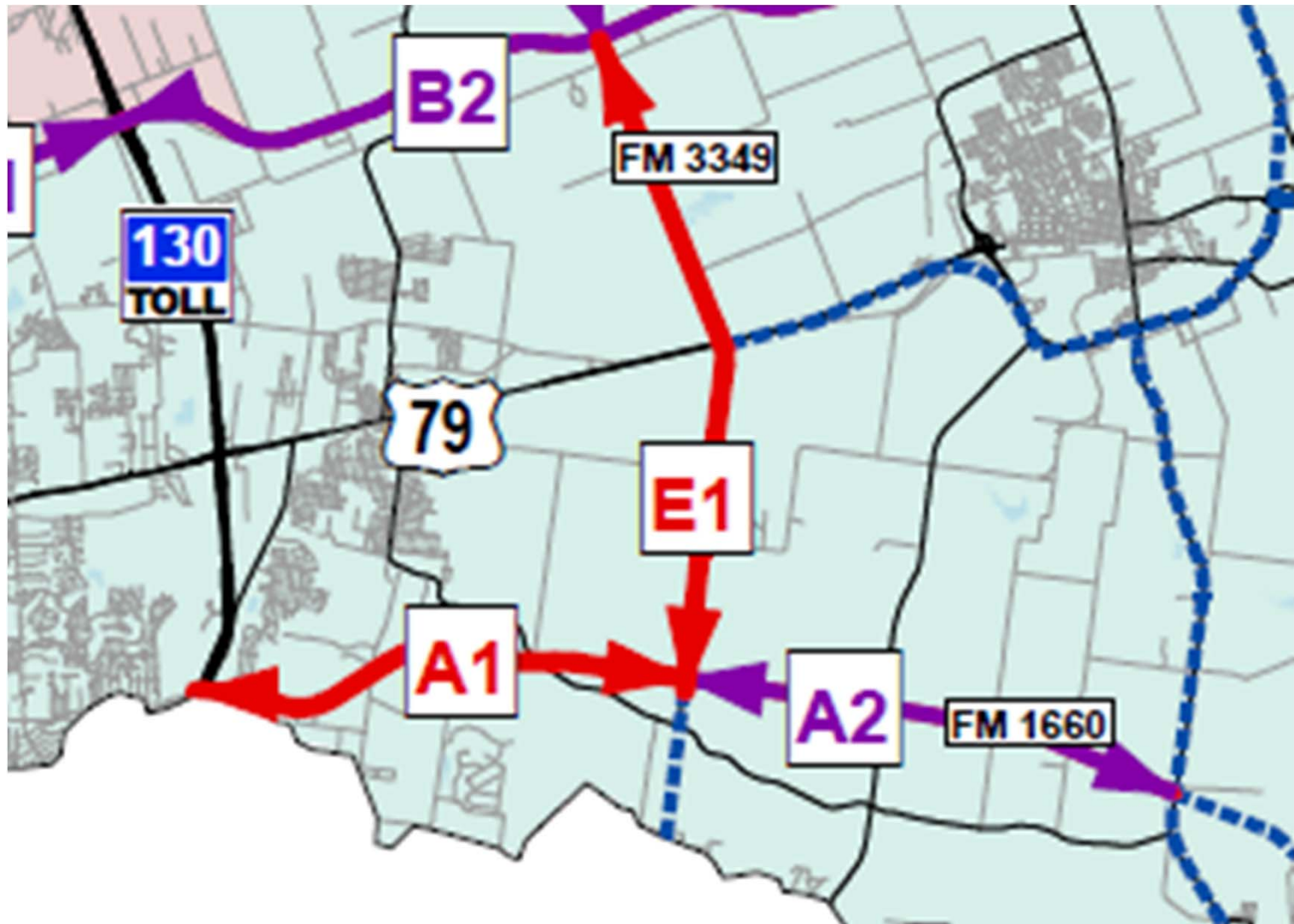
Major Activities to Date:

- 1st Open House: June 20, 2017
- 2nd Open House: November 9, 2017

Upcoming Anticipated Activities:

- Determine the preferred route concept

Corridors A1 & E1



Corridors A1 & E1

Study Limits:

A1: SH 130 to FM 3349

E1: FM 3349 from Chandler Road to FM 1660



Engineer:

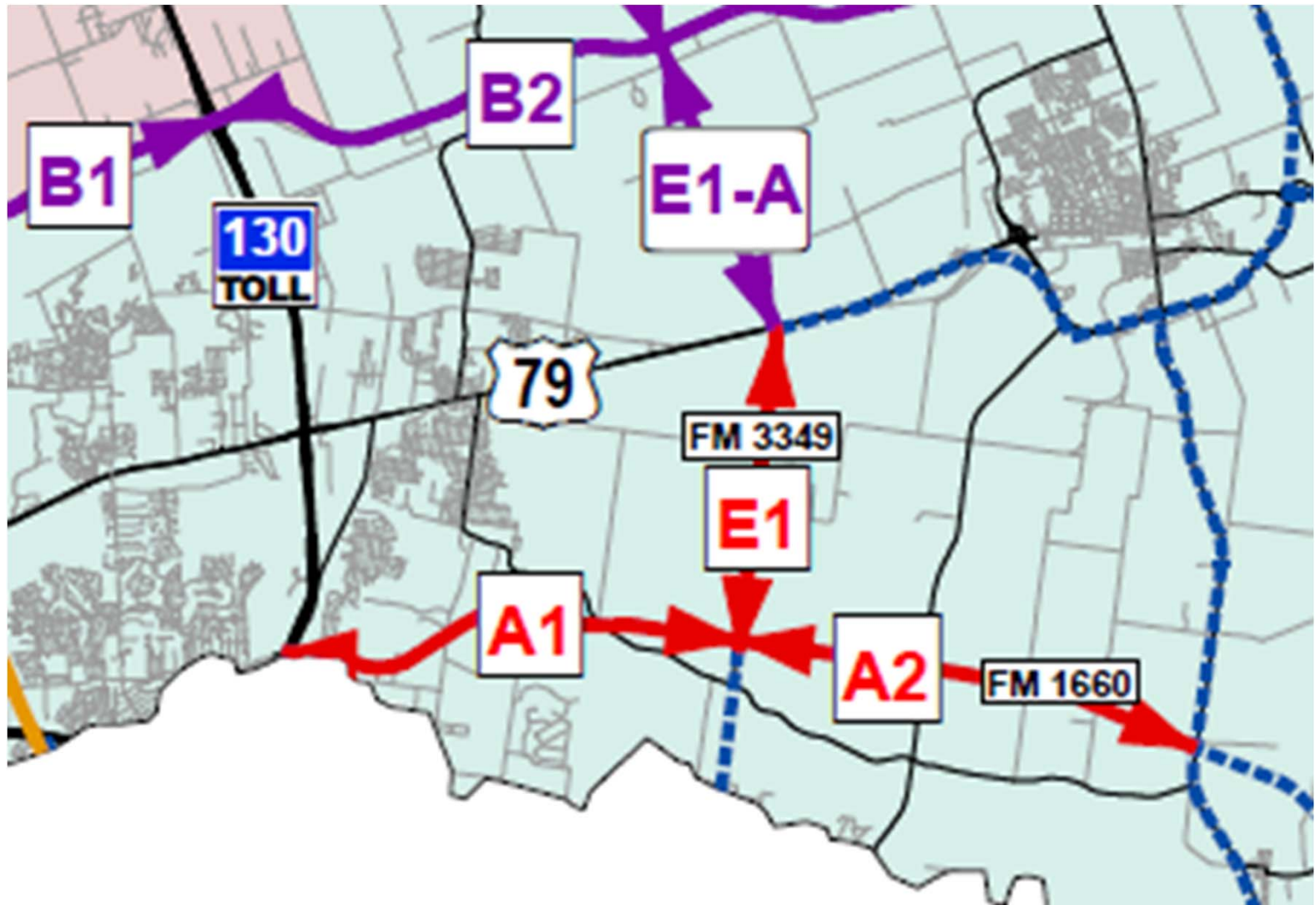
A1: Kennedy Consulting, Inc. (KCI)

E1: BGE

Major Activities to Date:

- Open House: June 6, 2017 (A1)
- Open House: June 27, 2017 (E1)
- Open House: August 24, 2017 (A1/E1)

Corridors A1, A2 & E1 – Inverted T



Corridors A1, A2 & E1 – Inverted T

Revised Study Limits:

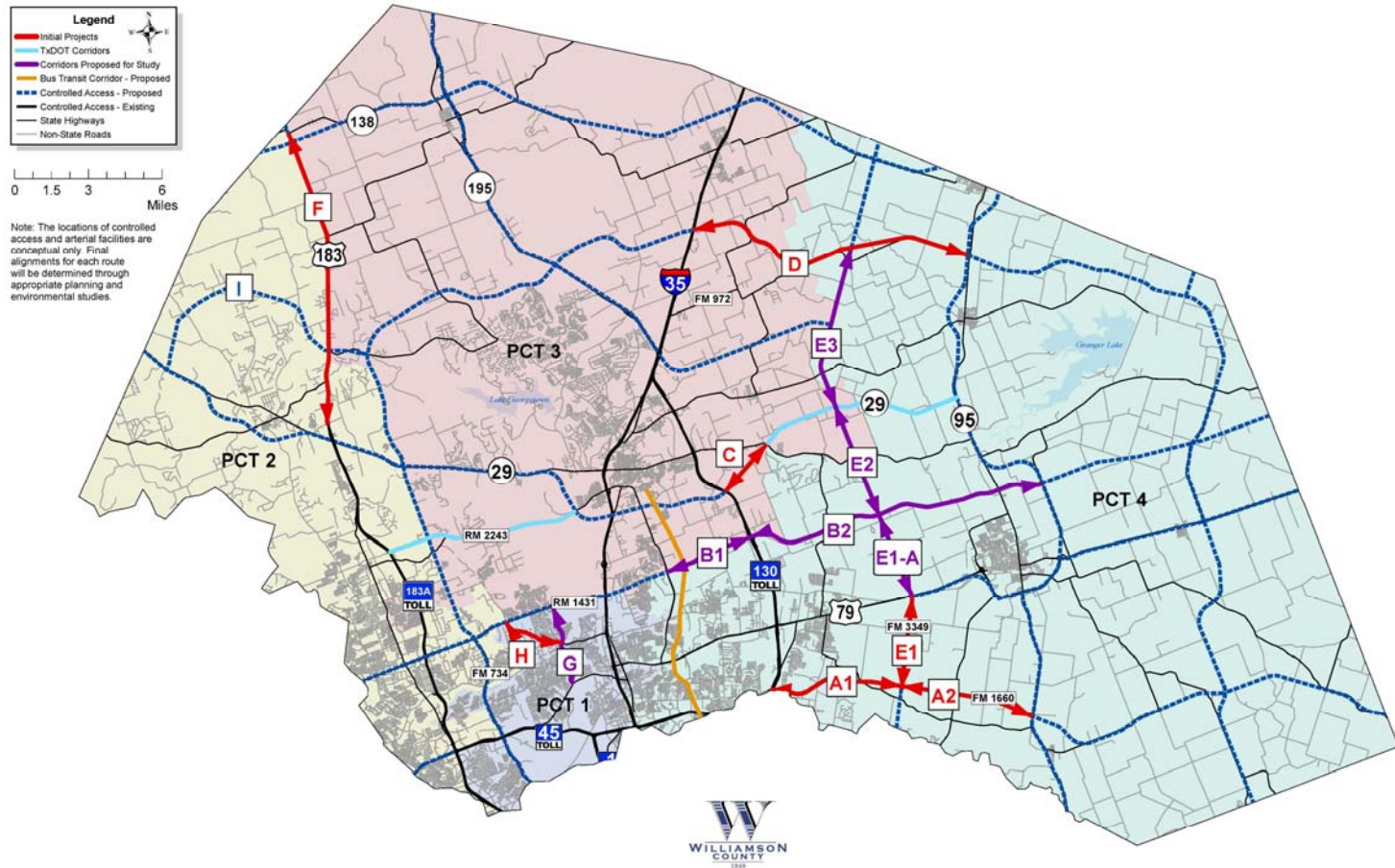
- A1: SH 120 to FM 3349
- A2: FM 3349 to SH 95
- E1: Corridor A to US 79



Upcoming Activities:

- Combine the A1 and E1 Corridor Studies and add A2 Corridor Study into a single project (Inverted 'T')
 - Removed northern section from E1 Project Limits (US 79 to Chandler Rd)
- Traffic projections completed by early 2018
- Evaluate potential route concepts and develop the refined route concepts
- 3rd Open House in Spring 2018 to discuss refined route options
- Combined Environmental Study to be prepared

Corridor D – Ronald Reagan Extension



Corridor D – Ronald Reagan Extension

Study Limits: Ronald Reagan Blvd from
IH 35 to SH 95

Engineer: TBD

Upcoming Anticipated Activities:

- Release Request for Qualifications (RFQ) for Corridor Study



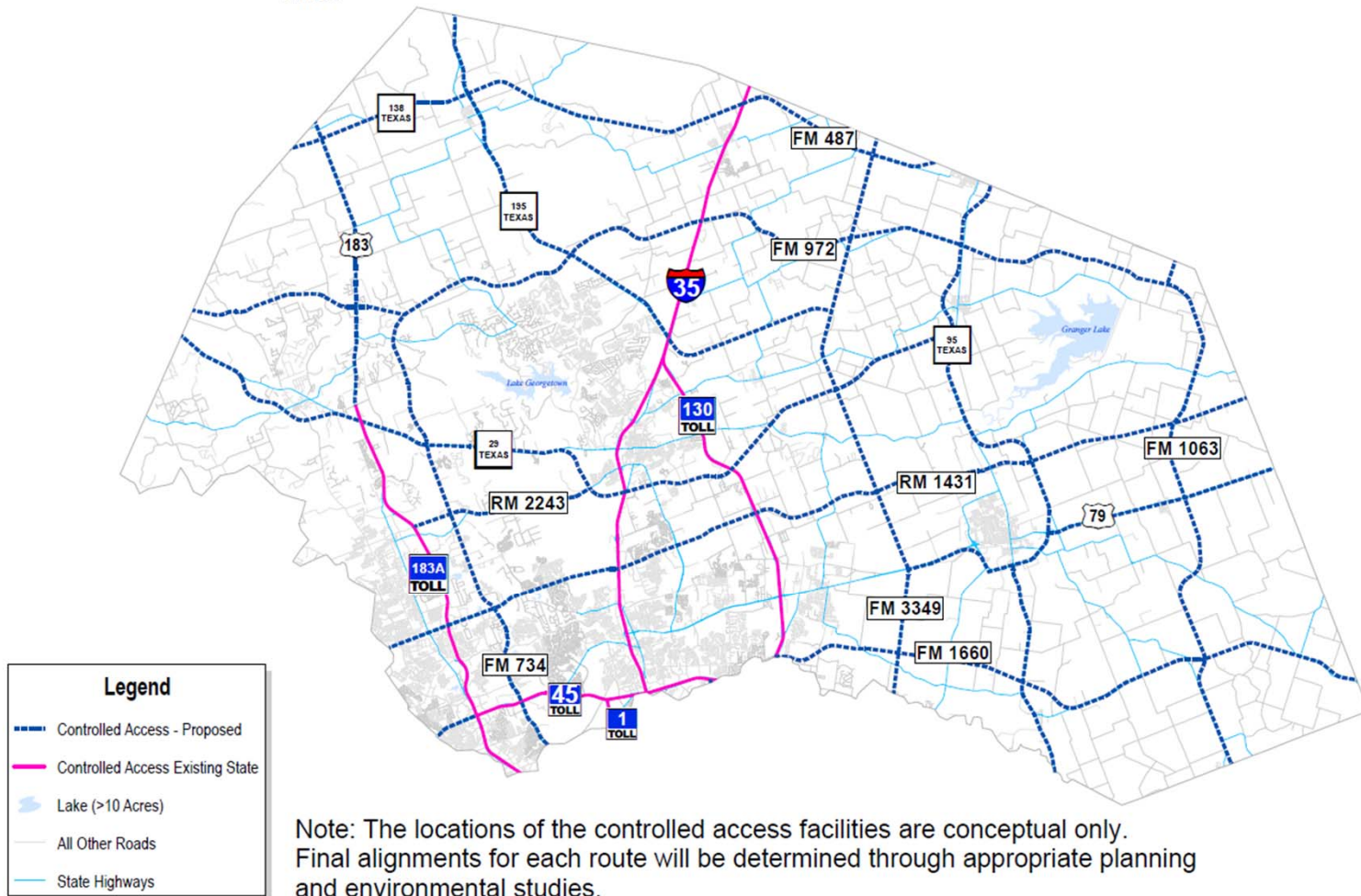


Williamson County Long-Range Transportation Plan Amendment

Original Map

Conceptual Map of Proposed Controlled Access Facilities

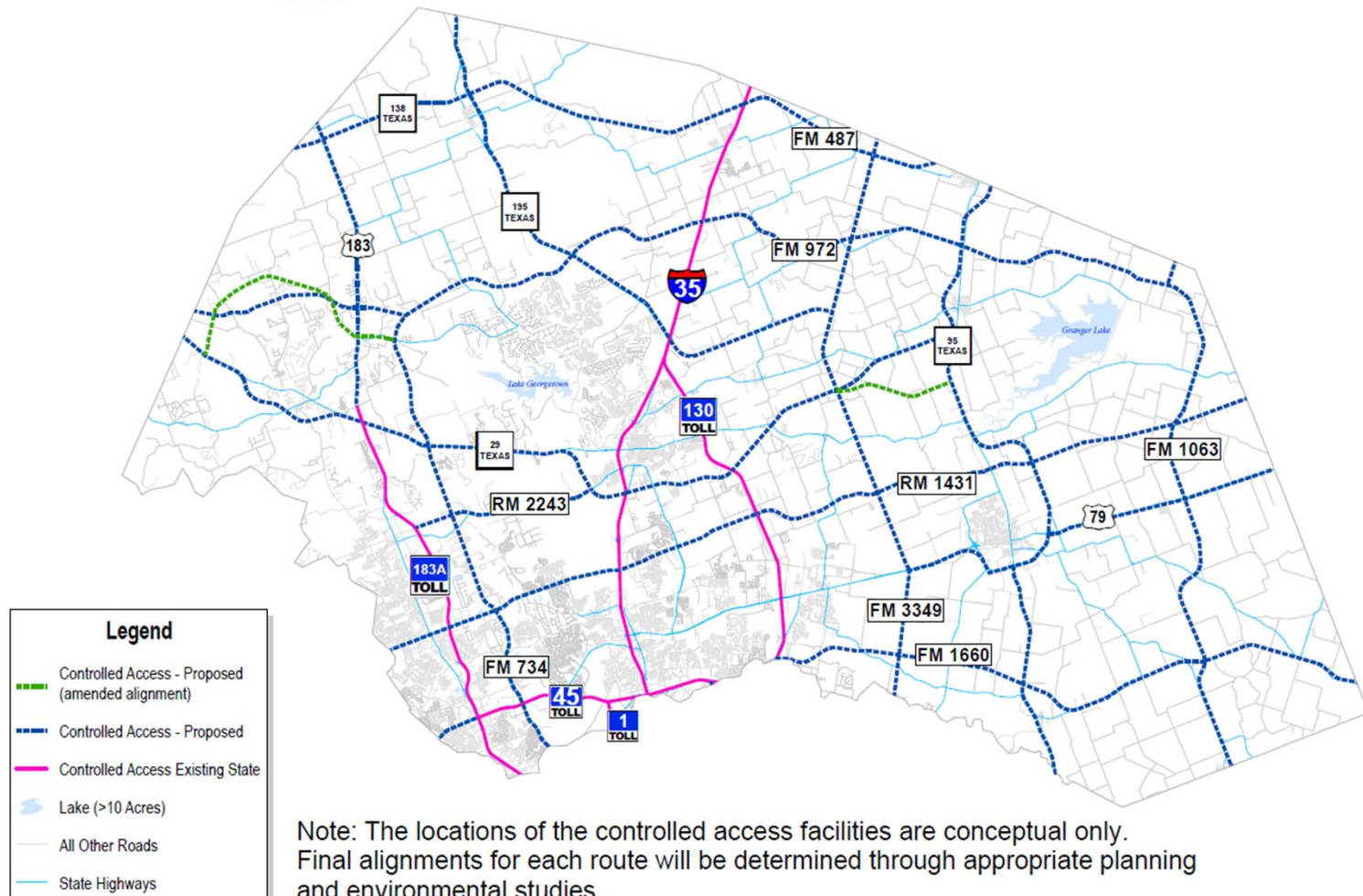
12/7/2017



Original & Proposed Amendment

Conceptual Map of Proposed Controlled Access Facilities

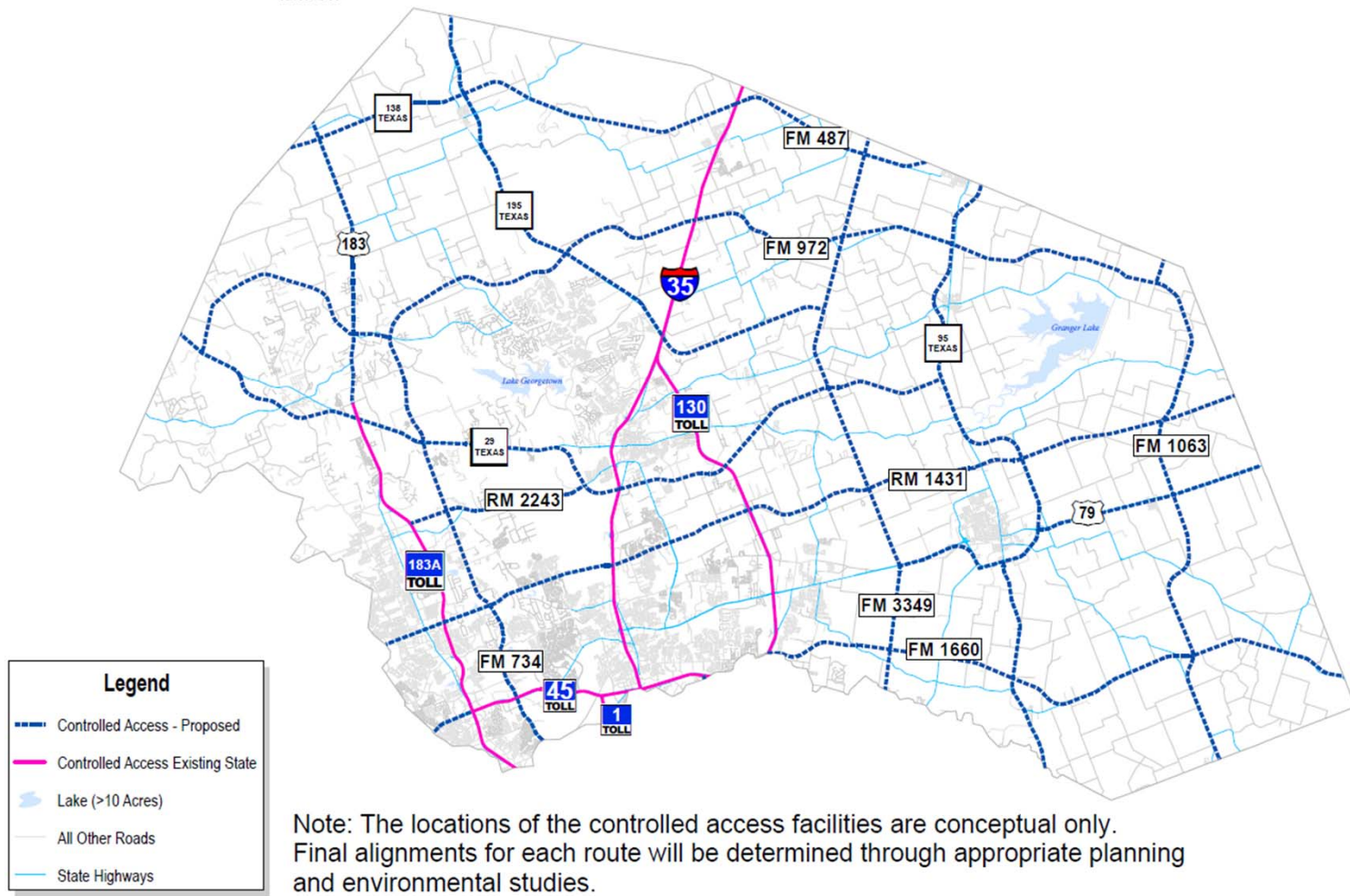
12/7/2017



Amended Map

Conceptual Map of Proposed Controlled Access Facilities

12/7/2017



Note: The locations of the controlled access facilities are conceptual only. Final alignments for each route will be determined through appropriate planning and environmental studies.