

**SONTERRA WEST  
 SECTION 12  
 JARRELL, TEXAS**

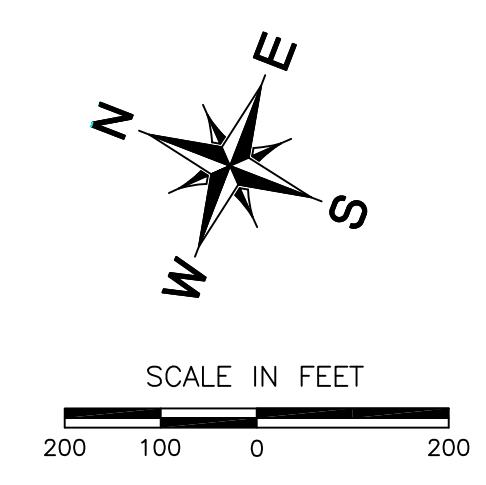
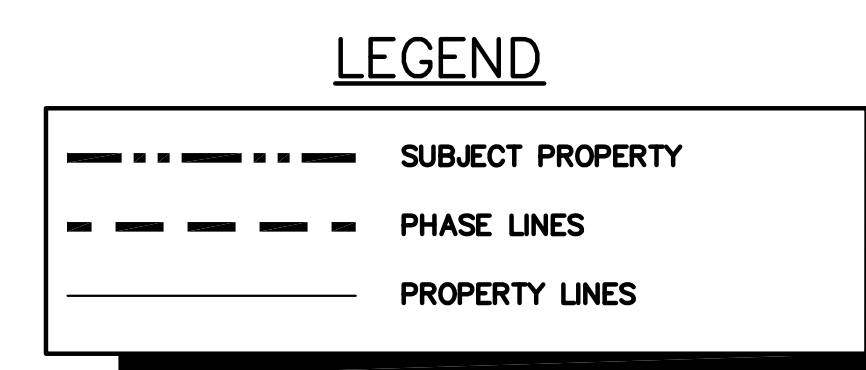
**OVERALL  
 PRELIMINARY PLAT**

Scale: AS SHOWN  
 Designed by:  
 Drawn by:  
 Checked by:  
 Date: APRIL 2018  
 Project No.

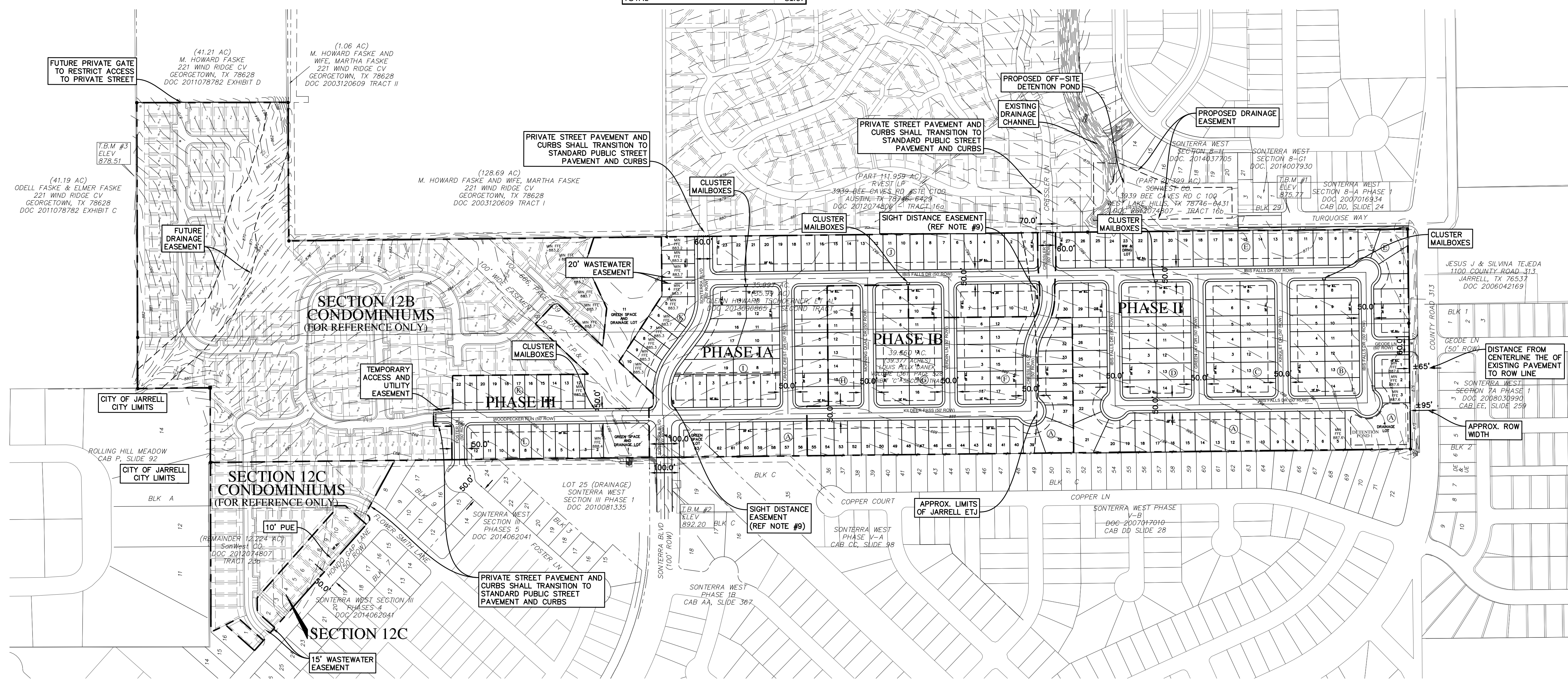
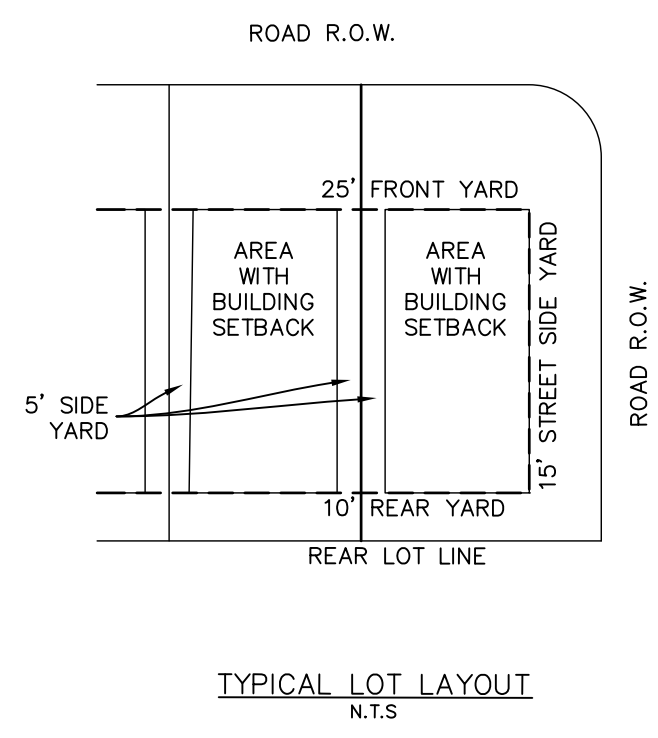
LOT SUMMARY	
PHASE IA (SEE NOTE 10)	
RESIDENTIAL LOTS	74
GREEN SPACE LOT	1
TOTAL	75
PHASE IB (SEE NOTE 10)	
RESIDENTIAL LOTS	59
TOTAL	59
PHASE II	
RESIDENTIAL LOTS	97
DRAINAGE AND WASTEWATER LOT	1
DRAINAGE LOT	1
TOTAL	99
PHASE III	
RESIDENTIAL LOTS	22
GREEN SPACE AND DRAINAGE LOTS	2
TOTAL	24
PHASE IA, IB, II, & III TOTAL	
RESIDENTIAL LOTS	252
NONRESIDENTIAL LOTS	5
SECTION 12C	
RESIDENTIAL LOTS	11
TOTAL	11
AREA (ACRES)	
PHASE IA	13.64
PHASE IB	9.82
PHASE II	19.24
PHASE III	6.57
SECTION 12B CONDOMINIUMS	26.09
SECTION 12C CONDOMINIUMS	4.44
SECTION 12C	1.27
TOTAL	81.07

STREET SUMMARY						
STREET NAME	LENGTH	ROW WIDTH	ROAD WIDTH	ROAD TYPE	DESIGN SPEED	
GEODE LN	141.0'	60'	40'	COLLECTOR	25 MPH	
IBIS FALLS DR (PHASE II)	2744.8'	50'	33'	LOCAL	25 MPH	
IBIS FALLS DR (PHASE I)	1170.2'	50'	33'	LOCAL	25 MPH	
KINGLET DR	435.0'	50'	33'	LOCAL	25 MPH	
GREEN JAY DR	435.0'	50'	33'	LOCAL	25 MPH	
CRESSLER LN	144.4'	60'	40'	COLLECTOR	25 MPH	
VERDIN LN	460.4'	50'	33'	LOCAL	25 MPH	
MORNING QUAIL DR	450.0'	50'	33'	LOCAL	25 MPH	
CRANE CREST DR	450.0'	50'	33'	LOCAL	25 MPH	
SONTERRA BLVD	210.7'	100'	51'	COLLECTOR	40 MPH	
	634.1'	60'	40'	COLLECTOR	25 MPH*	
KILDEER PASS	1228.0'	50'	33'	LOCAL	25 MPH	
WOODPECKER RUN (PHASE I)	45.0'	50'	33'	LOCAL	25 MPH	
WOODPECKER RUN (PHASE III)	709.0'	50'	33'	LOCAL	25 MPH	
FOSTER LN	156.9'	50'	33'	LOCAL	25 MPH	

\*A waiver for a reduced speed was granted by Williamson Co.  
 Cressler Ln transitions from Collector to Local Street at Ibis Falls Dr.



- NOTES:
- ALL LOTS SHALL HAVE A 25' BUILDING SETBACK FROM THE FRONT PROPERTY LINE.
  - WATER AND WASTEWATER SERVICE PROVIDED BY THE SONTERRA MUD.
  - ALL ROADS TO BE PUBLIC.
  - DRIVEWAYS FOR BLOCK A, LOTS 1-4 AND BLOCK E, LOTS 1-6 SHALL CONNECT ONLY TO ROAD B AND NOT TO CR 313.
  - DRIVEWAYS FOR BLOCK A, LOT 1 AND BLOCK E, LOT 1 SHALL CONNECT ONLY TO ROAD B AND NOT TO GEODE LANE.
  - NO PORTION OF THIS SITE IS LOCATED IN THE 100 YEAR FLOODPLAIN PER FIRM PANEL NO 48491C0150E DATED SEPTEMBER 26, 2008 FOR WILLIAMSON COUNTY, TEXAS AND INCORPORATED AREAS.
  - ALL CONCRETE SIDEWALKS TO BE ADA ACCESSIBLE AND CONSTRUCTED BY RESIDENTIAL HOME BUILDER AT TIME OF HOME CONSTRUCTION.
  - ALL SIDEWALKS ARE TO BE MAINTAINED BY THE ADJACENT OWNER.
  - SIGHT DISTANCE EASEMENT WILL BE REQUIRED AT FINAL PLATTING ON BLOCK I, LOT 1 AND BLOCK F, LOT 11.
  - PHASE 1A AND PHASE 1B TO BE CONCURRENTLY CONSTRUCTED AND PHASE LINE IS FOR PLATTING PURPOSES ONLY.



(41.21 AC)  
 M. HOWARD FASKE  
 WIFE, MARTHA FASKE  
 221 WIND RIDGE CV  
 GEORGETOWN, TX 78628  
 DOC 2011078782 EXHIBIT D

(1.06 AC)  
 M. HOWARD FASKE AND  
 WIFE, MARTHA FASKE  
 221 WIND RIDGE CV  
 GEORGETOWN, TX 78628  
 DOC 2003120609 TRACT II

(128.69 AC)  
 M. HOWARD FASKE AND WIFE, MARTHA FASKE  
 221 WIND RIDGE CV  
 GEORGETOWN, TX 78628  
 DOC 2003120609 TRACT I

(41.19 AC)  
 ODELL FASKE & ELMER FASKE  
 221 WIND RIDGE CV  
 GEORGETOWN, TX 78628  
 DOC 2011078782 EXHIBIT C

(12.224 AC)  
 REMAINDER  
 DOC 2011078782 TRACT 239

LOT 25 (DRAINAGE)  
 SONTERRA WEST  
 SECTION III PHASE I  
 DOC 2010081335

SONTERRA WEST  
 SECTION III PHASES 3  
 DOC 2014062041

SONTERRA WEST  
 SECTION III PHASES 4  
 DOC 2014062041

SONTERRA WEST  
 PHASE 1B  
 CAB AA, SLIDE 367

SONTERRA WEST PHASE  
 V-B  
 DOC 200717919  
 CAB DD, SLIDE 28

SONTERRA WEST  
 SECTION 8-A PHASE 1  
 DOC 2007016334  
 CAB DD, SLIDE 24

SONTERRA WEST  
 SECTION 7A PHASE 1  
 DOC 2008039993  
 CAB EE, SLIDE 259

JESUS J & SILVIA TEJEDA  
 1100 COUNTY ROAD 313  
 JARRELL, TX 76537  
 DOC 2006042169

BLK 1  
 1  
 2  
 3

BLK 2  
 4  
 5  
 6  
 7  
 8  
 9  
 10

BLK A

BLK B

BLK C

BLK D

BLK E

BLK F

BLK G

BLK H

BLK I

BLK J

BLK K

BLK L

BLK M

BLK N

BLK O

BLK P

BLK Q

BLK R

BLK S

BLK T

BLK U

BLK V

BLK W

BLK X

BLK Y

BLK Z

BLK AA

BLK AB

BLK AC

BLK AD

BLK AE

BLK AF

BLK AG

BLK AH

BLK AI

BLK AJ

BLK AK

BLK AL

BLK AM

BLK AN

BLK AO

BLK AP

BLK AQ

BLK AR

BLK AS

BLK AT

BLK AU

BLK AV

BLK AW

BLK AX

BLK AY

BLK AZ

BLK BA

BLK BB

BLK BC

BLK BD

BLK BE

BLK BF

BLK BG

BLK BH

BLK BI

BLK BJ

BLK BK

BLK BL

BLK BM

BLK BN

BLK BO

BLK BP

BLK BQ

BLK BR

BLK BS

BLK BT

BLK BU

BLK BV

BLK BV

BLK BW

BLK BX

BLK BY

BLK BZ

BLK CA

BLK CB

BLK CC

BLK CD

BLK CE

BLK CF

BLK CG

BLK CH

BLK CI

BLK CJ

BLK CK

BLK CL

BLK CM

BLK CN

BLK CO

BLK CP

BLK CQ

BLK CR

BLK CS

BLK CT

BLK CU

BLK CV

BLK CW

BLK CX

BLK CY

BLK CZ

BLK DA

BLK DB

BLK DC

BLK DD

BLK DE

BLK DF

BLK DG

BLK DH

BLK DI

BLK DJ

BLK DK

BLK DL

BLK DM

BLK DN

BLK DO

BLK DP

BLK DQ

BLK DR

BLK DS

BLK DT

BLK DU

BLK DV

BLK DV

BLK DW

BLK DX

BLK DY

BLK DZ

BLK EA

BLK EB

BLK EC

BLK ED

BLK EE

BLK EF

BLK EG

BLK EH

BLK EI

BLK EJ

BLK EK

BLK EL

BLK EM

BLK EN

BLK EO

BLK EP

BLK EQ

BLK ER

BLK ES

BLK ET

BLK EU

BLK EV

BLK EV

BLK EW

BLK EX

BLK EY

BLK EZ

BLK FA

BLK FB

BLK FC

BLK FD

BLK FE

BLK FF

BLK FG

BLK FH

BLK FI

BLK FJ

BLK FK

BLK FL

BLK FM

BLK FN

BLK FO

BLK FP

BLK FQ

BLK FR

BLK FS

BLK FT

BLK FU

BLK FV

BLK FV

BLK FW

BLK FX

BLK FY

BLK FZ

BLK GA

BLK GB

BLK GC

BLK GD

BLK GE

BLK GF

BLK GH

BLK GI

BLK GJ

BLK GK

BLK GL

BLK GM

BLK GN

BLK GO

BLK GP

BLK GQ

BLK GR

BLK GS

BLK GT

BLK GU

BLK GV

BLK GV

BLK GW

BLK GX

BLK GY

BLK GZ

BLK HA

BLK HB

BLK HC

BLK HD

BLK HE

BLK HF

BLK HG

BLK HH

BLK HI

BLK HJ

BLK HK

BLK HL

BLK HM

BLK HN

BLK HO

BLK HP

BLK HQ

BLK HR

BLK HS

BLK HT

BLK HU

BLK HV

BLK HV

BLK HW

BLK HX

BLK HY

BLK HZ

BLK IA

BLK IB

BLK IC

BLK ID

BLK IE

BLK IF

BLK IG

BLK IH

BLK II

BLK IJ

BLK IK

BLK IL

BLK IM

BLK IN

BLK IO

BLK IP

BLK IQ

BLK IR

BLK IS

BLK IT

BLK IU

BLK IV

BLK IV

BLK IW

BLK IX

BLK IY

BLK IZ

BLK JA

BLK JB

BLK JC

BLK JD

BLK JE

BLK JF

BLK JG

BLK JH

BLK JI

BLK JJ

BLK JK

BLK JL

BLK JM

BLK JN

BLK JO

BLK JP

BLK JQ

BLK JR

BLK JS

BLK JT

BLK JU

BLK JV

BLK JV

BLK JW

BLK JX

BLK JY

BLK JZ

BLK KA

BLK KB

BLK KC

BLK KD

BLK KE

BLK KF

BLK KG

BLK KH

BLK KI

BLK KJ

BLK KK

BLK KL

BLK KM

BLK KN

BLK KO

BLK KP

BLK KQ

BLK KR

BLK KS

BLK KT

BLK KU

BLK KV

BLK KV

BLK KW

BLK KX

BLK KY

BLK KZ

BLK LA

BLK LB

BLK LC

BLK LD

BLK LE

BLK LF

BLK LG

BLK LH

BLK LI

BLK LJ

BLK LK

BLK LL

BLK LM

BLK LN

BLK LO

BLK LP

BLK LQ

BLK LR

BLK LS

BLK LT

BLK LU

BLK LV

BLK LV

BLK LW

BLK LX

BLK LY

BLK LZ

BLK MA

BLK MB

BLK MC

BLK MD

BLK ME

BLK MF

BLK MG

BLK MH

BLK MI

BLK MJ

BLK MK

BLK ML

BLK MN

BLK MO

BLK MP

BLK MQ

BLK MR

BLK MS

BLK MT

BLK MU

BLK MV

BLK MV

BLK MW

BLK MX

BLK MY

BLK MZ

BLK NA

BLK NB

BLK NC

BLK ND

BLK NE

BLK NF

BLK NG

BLK NH

BLK NI

BLK NJ

BLK NK

BLK NL

BLK NM

BLK NN

BLK NO

BLK NP

BLK NQ

BLK NR

BLK NS

BLK NT

BLK NU

BLK NV

BLK NV

BLK NW

BLK NX

BLK NY

BLK NZ

BLK OA

BLK OB

BLK OC

BLK OD

BLK OE

BLK OF

BLK OG

BLK OH

BLK OI

BLK OJ

BLK OK

BLK OL

BLK OM

BLK ON

BLK OO

BLK OP

BLK OQ

BLK OR

BLK OS

BLK OT

BLK OU

BLK OV

BLK OV

BLK OW

BLK OX

BLK OY

BLK OZ

BLK PA

BLK PB

BLK PC

BLK PD

BLK PE

BLK PF

BLK PG

BLK PH

BLK PI

BLK PJ

BLK PK

BLK PL

BLK PM

BLK PN

BLK PO

BLK PP

BLK PQ

BLK PR

BLK PS

BLK PT

BLK PU

BLK PV

BLK PV

BLK PW

BLK PX

BLK PY

BLK PZ

BLK QA

BLK QB

BLK QC

BLK QD

BLK QE

BLK QF

BLK QG

BLK QH

BLK QI

BLK QJ

BLK QK

BLK QL

BLK QM

BLK QN

BLK QO

BLK QP

BLK QQ

BLK QR

BLK QS

BLK QT

BLK QU

BLK QV

BLK QV

BLK QW

BLK QX

BLK QY

BLK QZ

BLK RA

BLK RB

BLK RC

BLK RD

BLK RE

BLK RF

BLK RG

BLK RH

BLK RI

BLK RJ

BLK RK

BLK RL

BLK RM

BLK RN

BLK RO

BLK RP

BLK RQ

BLK RR

BLK RS

BLK RT

BLK RU

BLK RV

BLK RV

BLK RW

BLK RX

BLK RY

BLK RZ

BLK SA

BLK SB

BLK SC

BLK SD

BLK SE

BLK SF

BLK SG

BLK SH

BLK SI

BLK SJ

BLK SK

BLK SL

BLK SM

BLK SN

BLK SO

BLK SP

BLK SQ

BLK SR

BLK SS

BLK ST

BLK SU

BLK SV

BLK SV

BLK SW

BLK SX

BLK SY

BLK SZ

BLK TA

BLK TB

BLK TC

BLK TD

BLK TE

BLK TF

BLK TG

BLK TH

BLK TI

BLK TJ

BLK TK

BLK TL

BLK TM

BLK TN

BLK TO

BLK TP

BLK TQ

BLK TR

BLK TS

BLK TT

BLK TU

BLK TV

BLK TV

BLK TW

BLK TX

BLK TY

BLK TZ

BLK UA

BLK UB

BLK UC

BLK UD

BLK UE

BLK UF

BLK UG

BLK UH

BLK UI

BLK UJ

BLK UK

BLK UL

BLK UM

BLK UN

BLK UO

BLK UP

BLK UQ

BLK UR

BLK US

BLK UT

BLK UU

BLK UV

BLK UV

BLK UW

BLK UX

BLK UY

BLK UZ

BLK VA

BLK VB

BLK VC

BLK VD

BLK VE

BLK VF

BLK VG

BLK VH

BLK VI

BLK VJ

BLK VK

BLK VL

BLK VM

BLK VN

BLK VO

BLK VP

BLK VQ

BLK VR

BLK VS

BLK VT

BLK VU

BLK VV

BLK VV

BLK VW

BLK VX

BLK VY

BLK VZ

BLK WA

BLK WB

BLK WC

BLK WD

BLK WE

BLK WF

BLK WG

BLK WH

BLK WI

BLK WJ

BLK WK

BLK WL

BLK WM

BLK WN

BLK WO

BLK WP

BLK WQ

BLK WR

BLK WS

BLK WT

BLK WU

BLK WV

BLK WV

BLK WY

BLK WZ

BLK XA

BLK XB

BLK XC

BLK XD

BLK XE

BLK XF

BLK XG

BLK XH

BLK XI

BLK XJ

BLK XK

BLK XL

BLK XM

BLK XN

BLK XO

BLK XP

BLK XQ

BLK XR

BLK XS

BLK XT

BLK XU

BLK XV

BLK XV

BLK XW

BLK XX

BLK XY

BLK XZ

BLK YA

BLK YB

BLK YC

BLK YD

BLK YE

BLK YF

BLK YG

BLK YH

BLK YI

BLK YJ

BLK YK

BLK YL

BLK YM

BLK YN

BLK YO

BLK YP

BLK YQ

BLK YR

BLK YS

BLK YT

BLK YU

BLK YV

BLK YV

BLK YW

BLK YX

BLK YY

BLK YZ

BLK ZA

BLK ZB

BLK ZC

BLK ZD

BLK ZE

BLK ZF

BLK ZG

BLK ZH

BLK ZI

BLK ZJ

BLK ZK

BLK ZL

BLK ZM

BLK ZN

BLK ZO

BLK ZP

BLK ZQ

BLK ZR

BLK ZS

BLK ZT

BLK ZU

BLK ZV

BLK ZV

BLK ZW

BLK ZX

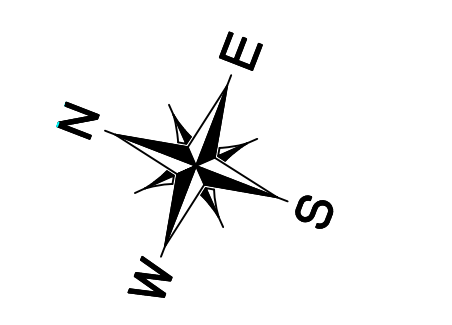
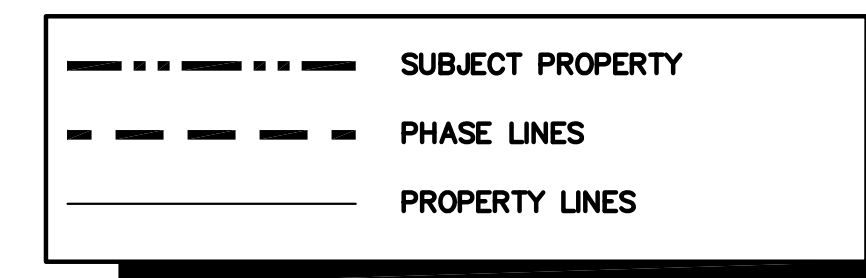
BLK ZY

BLK ZZ

DATE: 4/11/18 11:51 AM PLOT DATE: 4/12/2018 8:20 AM PLOTTED BY: USER

(PART 111.959 AC)  
 RVEST LP  
 3939 BEE CAVES RD, STE C100  
 AUSTIN, TX 78746-6429  
 DOC 2012074806 TRACT 16a

**LEGEND**



SCALE IN FEET  
 50 25 0 50

NOTES:  
 1. SIGHT DISTANCE EASEMENT WILL BE REQUIRED AT FINAL PLATTING ON BLOCK I, LOT 1 AND BLOCK F, LOT 11.

TEXAS REGISTRATION F4932  
 P.O. BOX 3639  
 CEDAR PARK, TEXAS 78613  
 PHONE (512) 354-4622

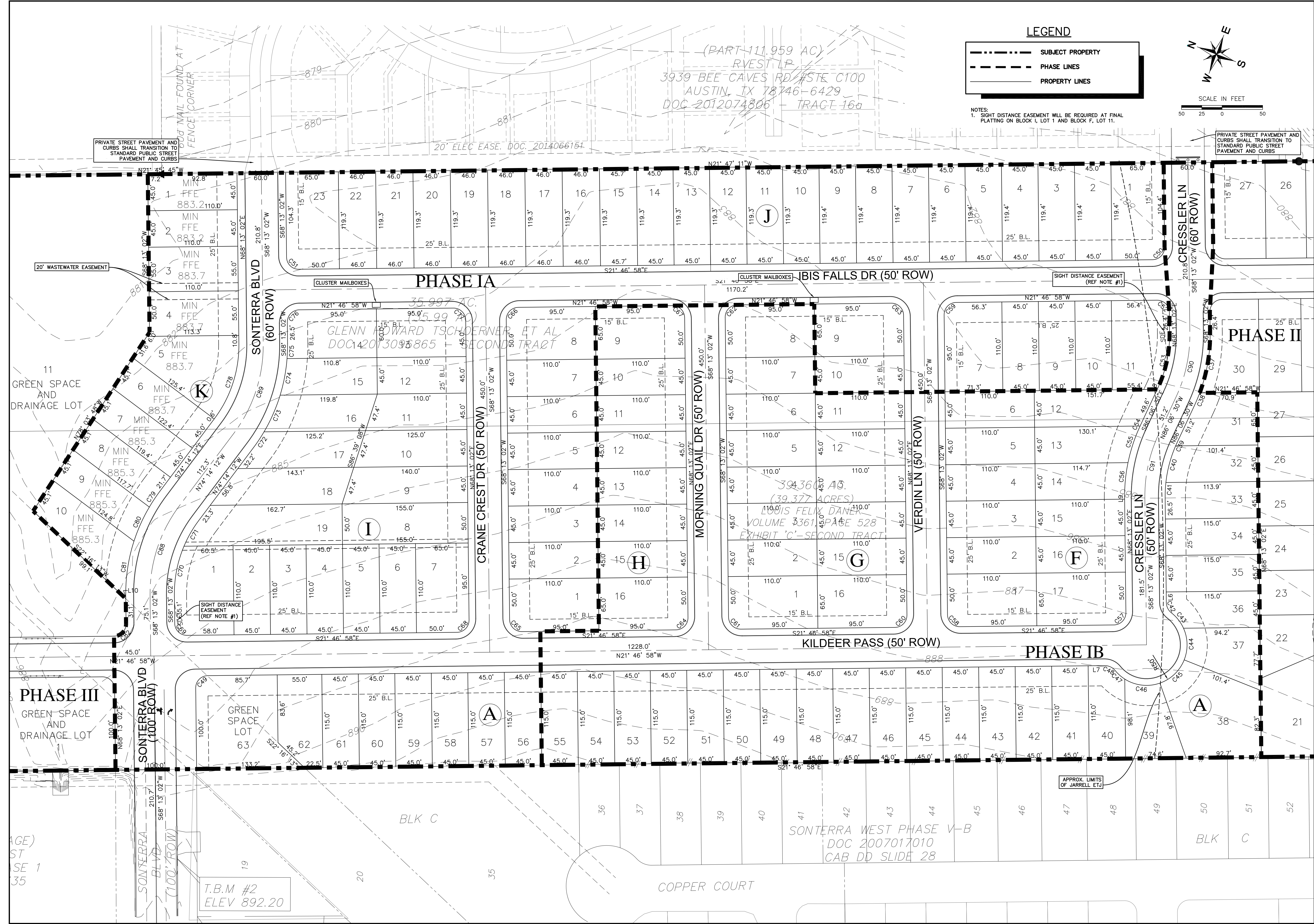


**SONTERRA WEST  
 SECTION 12  
 JARRELL, TEXAS**

**PRELIMINARY PLAT  
 PHASE I**

Scale: AS SHOWN  
 Designed by:  
 Drawn by:  
 Checked by:  
 Date: APRIL 2018  
 Project No.

SHEET  
**03**



PRIVATE STREET PAVEMENT AND CURBS SHALL TRANSITION TO STANDARD PUBLIC STREET PAVEMENT AND CURBS

PRIVATE STREET PAVEMENT AND CURBS SHALL TRANSITION TO STANDARD PUBLIC STREET PAVEMENT AND CURBS

20' WASTEWATER EASEMENT

CLUSTER MAILBOXES

CLUSTER MAILBOXES

SIGHT DISTANCE EASEMENT (REF NOTE #1)

SIGHT DISTANCE EASEMENT (REF NOTE #1)

APPROX. LIMITS OF JARRELL ETJ

T.B.M #2  
 ELEV 892.20

SONTERRA WEST PHASE V-B  
 DOC 2007017010  
 CAB DD SLIDE 28

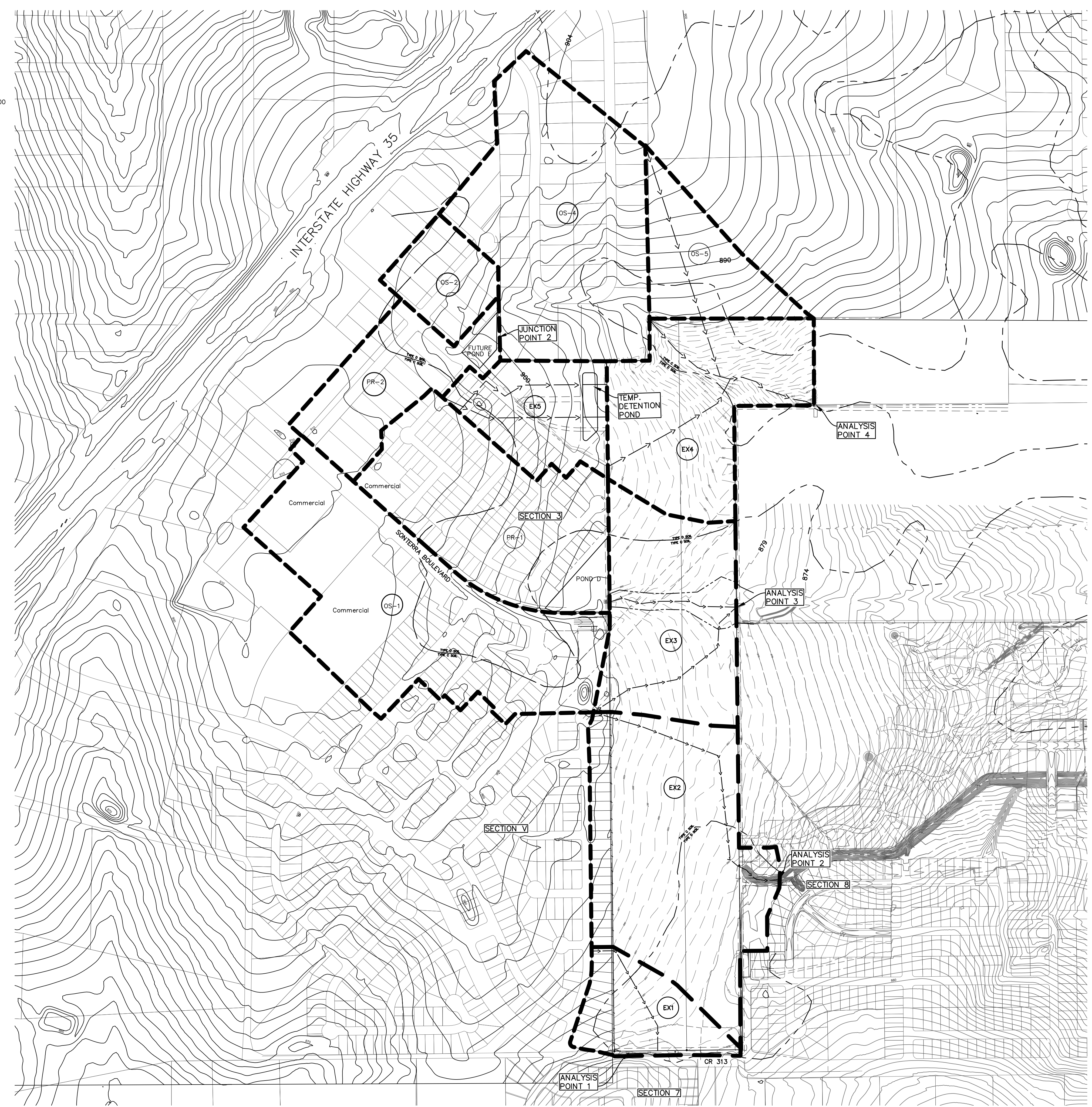
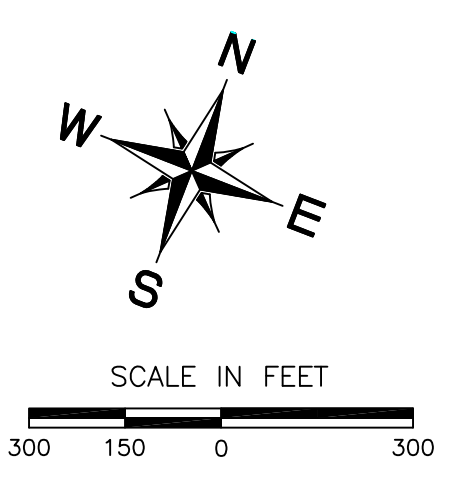
AGE)  
 ST  
 SE 1  
 35



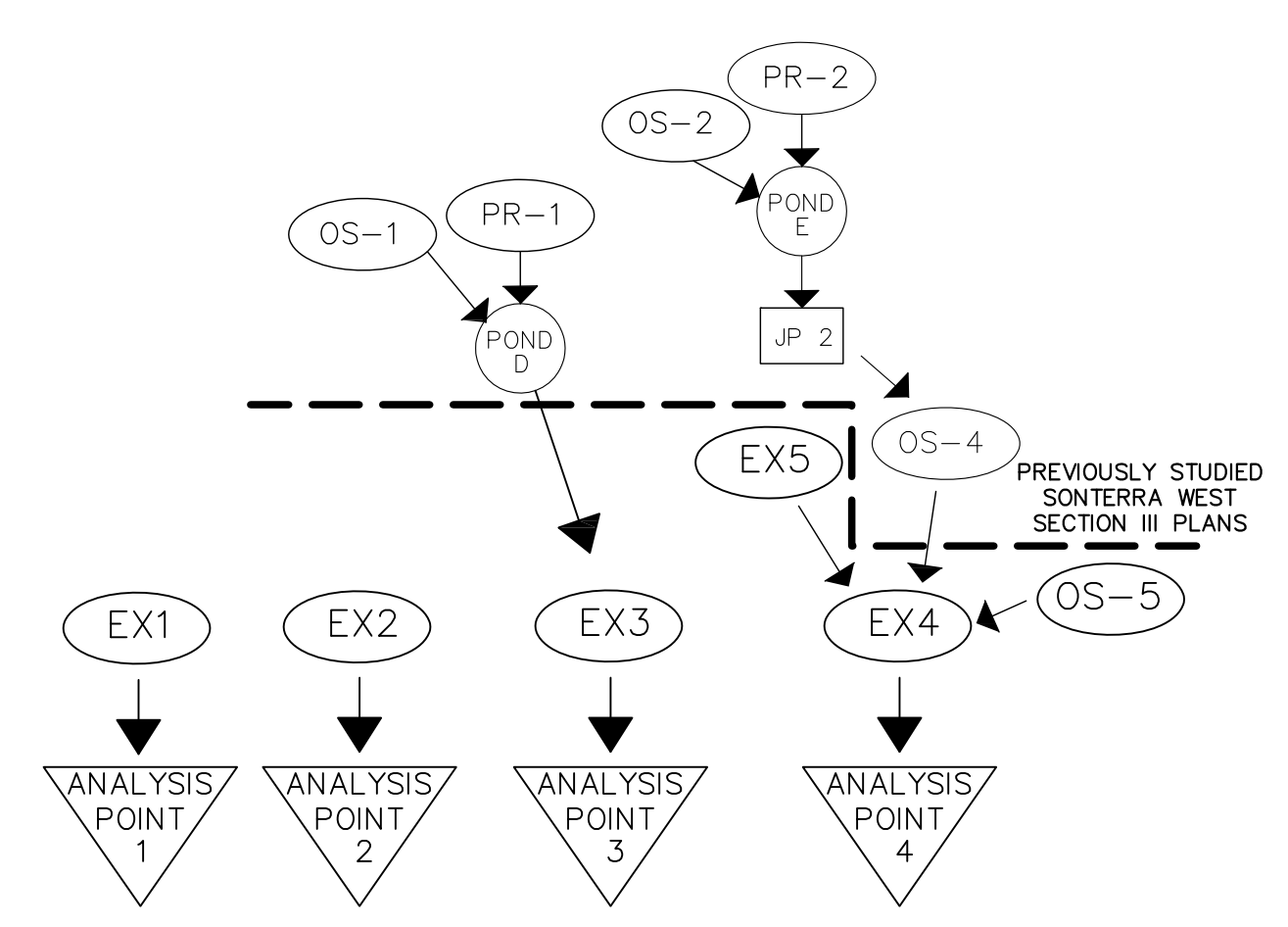








### EXISTING CONDITIONS



EXISTING CONDITIONS - SCS METHOD SUMMARY										
Area ID	DA (ac.)	IC (ac.)	IC (%)	TOC (min.)	TOC (hr.)	CN	Q2	Q10	Q25	Q100
EX1	8.2	1.3	16%	24	0.40	85.3	12	26	26	47
EX2	33.0	2.1	6%	29	0.48	82.1	38	89	120	170
EX3	21.1	0.0	0%	34	0.56	79.6	20	50	68	98
EX4	22.6	0.0	0%	38	0.63	82.4	23	54	73	103
EX5	11.0	0.0	0%	35	0.59	83.4	12	28	37	52
OS-5	10.5	0.0	0%	30	0.49	83.1	13	29	38	54
<b>TOTAL</b>	<b>106.3</b>	<b>3.5</b>	<b>3%</b>							

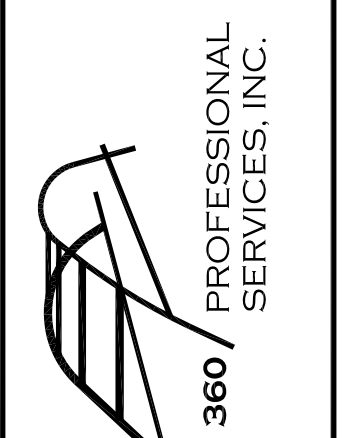
Existing CN Calculation Summary - SCS Methodology						
Drainage Basin	Soil Group	Cover Description	CN	Area (SF)	Area (Ac)	Product
EX1	C	Fair Condition Open Space	79		1.6	128.7
	C	ImperVIOUS Cover 1.8 Ac SF - 55% IC	98	80575	1.0	99.7
EX2	D	Fair Condition Open Space	84	228559	5.2	440.7
	D	ImperVIOUS Cover 0.6 Ac SF - 55% IC	98	24642	0.3	30.5
				Totals	8.2	699.6
					<b>CN</b>	<b>85.3</b>
EX2	C	Fair Condition Open Space	79		18.6	1465.9
	C	ImperVIOUS Cover 3.9 Ac SF - 55% IC	98	169571.4	2.1	209.8
EX3	D	Fair Condition Open Space	84	537395	12.3	1036.3
	D	Fair Condition Open Space	84		12.3	1036.3
				Totals	33.0	2712.0
					<b>CN</b>	<b>82.1</b>
EX3	C	Fair Condition Open Space	79	802951	18.4	1456.2
	D	Fair Condition Open Space	84		2.7	223.0
				Totals	21.1	1679.3
					<b>CN</b>	<b>79.6</b>
EX4	C	Fair Condition Open Space	79	310964	7.1	564.0
	D	Fair Condition Open Space	84		15.4	1297.3
				Totals	22.6	1861.3
					<b>CN</b>	<b>82.4</b>
EX5	C	Fair Condition Open Space	79	53481	1.2	97.0
	D	Fair Condition Open Space	84		9.7	817.6
				Totals	11.0	914.6
					<b>CN</b>	<b>83.4</b>
OS-5	C	Fair Condition Open Space	79	85950	2.0	155.9
	D	Fair Condition Open Space	84		8.5	713.7
				Totals	10.5	869.6
					<b>CN</b>	<b>83.1</b>

\*DRAINAGE MODEL ASSUMES RELOCATION OF TEMPORARY DETENTION POND FROM SECTION 3, PHASE 6 (DRAINAGE AREA EX5)

\*\*PER EXISTING PLAT REQUIREMENTS, DETENTION SERVING THE COMMERCIAL TRACTS WITHIN THE OS-2 AND PR-2 DRAINAGE AREAS WILL BE PROVIDED ON AN INDIVIDUAL BASIS UNLESS A REGIONAL STORMWATER DETENTION FACILITY IS CONSTRUCTED TO SERVE SOME OR ALL OF THE LOTS IN THE FUTURE. THUS, THE DRAINAGE MODEL ASSUMES FUTURE POND E HAS BEEN CONSTRUCTED.

- NOTES:
- ON-SITE DATA BY LENZ AND ASSOCIATES, INC DATED APRIL 2017. OTHER DATA SHOWN PROVIDED BY WILLIAMSON COUNTY, CAPCOG GIS, AND PAPE-DAWSON ENGINEERS, INC. NO WARRANTY IS EXPRESSED OR IMPLIED AS TO ITS ACCURACY.
  - REFER TO THE DRAINAGE REPORT OF ADDITIONAL INFORMATION.

TEXAS REGISTRATION F4932  
P.O. BOX 3639  
CEDAR PARK, TEXAS 78613  
PHONE (512) 354-4652

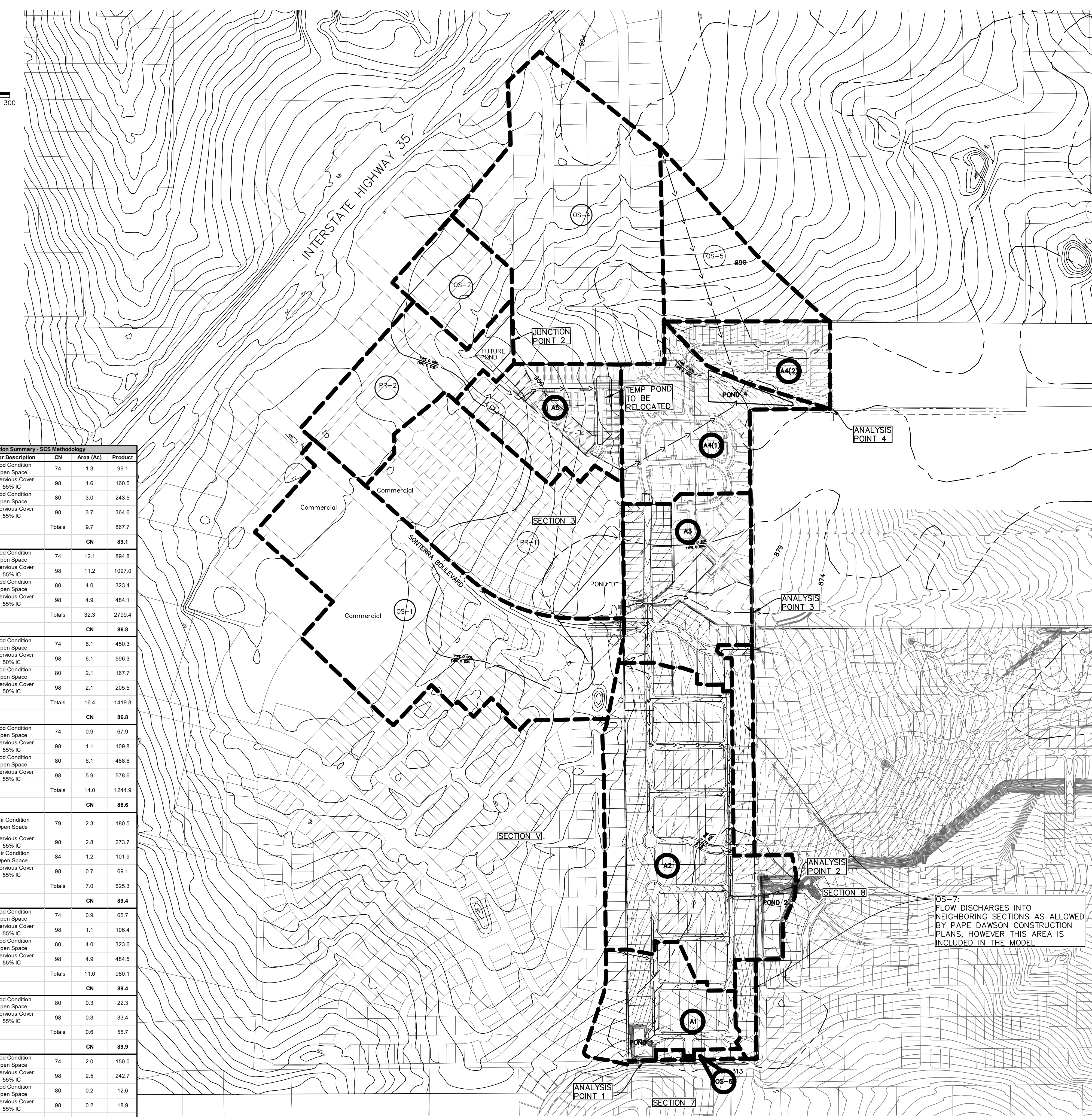
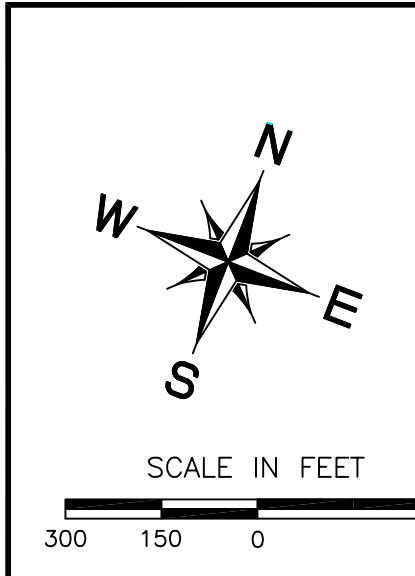


SONTERRA WEST  
SECTION 12  
JARRELL, TEXAS

OVERALL EXISTING  
DRAINAGE AREA MAP

Scale: AS SHOWN  
Designed by:  
Drawn by:  
Checked by:  
Date: APRIL 2018  
Project No.

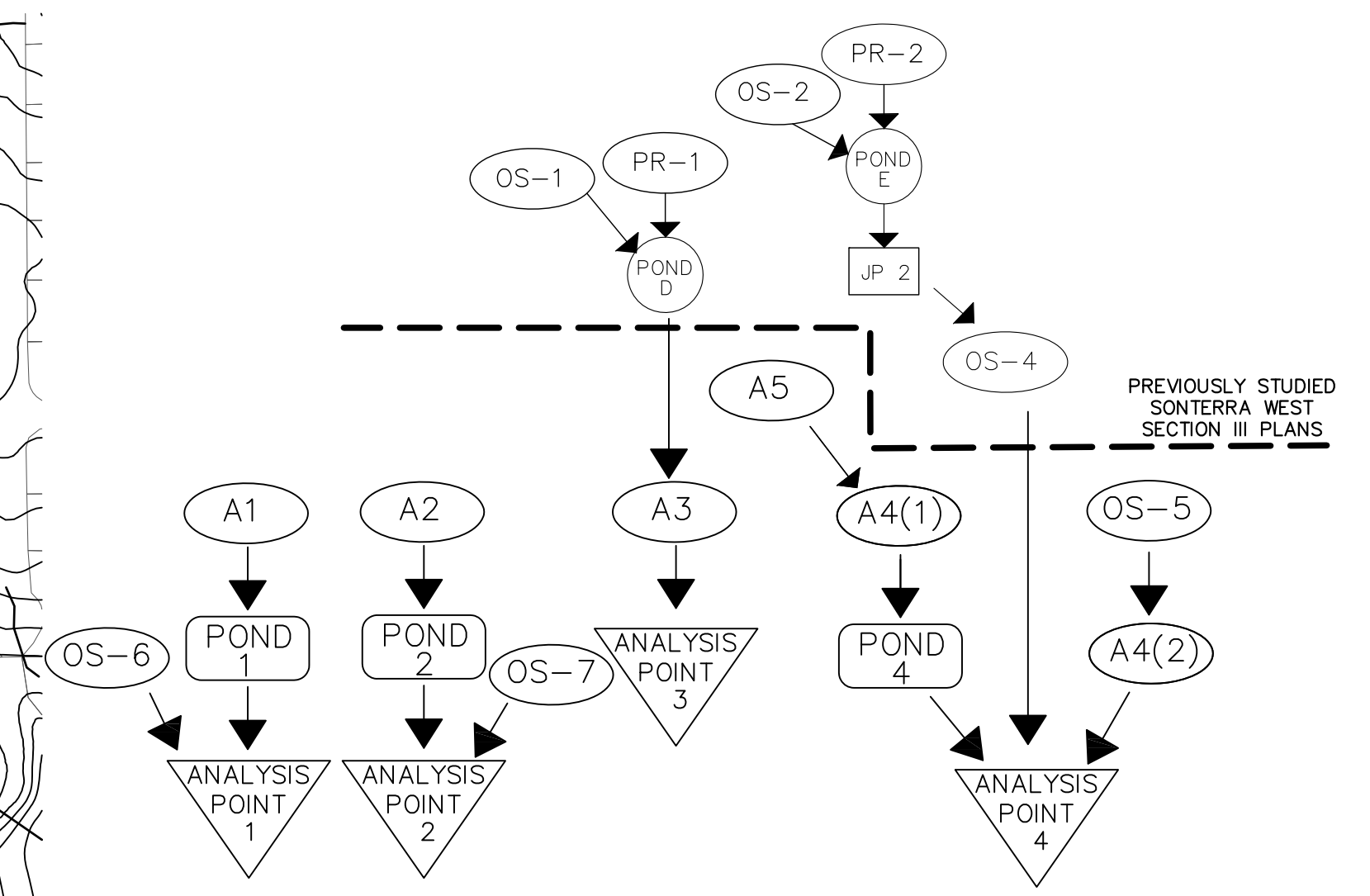
SHEET  
08



**Proposed CN Calculation Summary - SCS Methodology**

Drainage Basin	Soil Group	Cover Description	CN	Area (Ac)	Product
A1	C	Good Condition Open Space	74	1.3	99.1
	C	Impervious Cover 55% IC	98	1.6	160.5
	D	Good Condition Open Space	80	3.0	243.5
	D	Impervious Cover 55% IC	98	3.7	364.6
	Totals			9.7	867.7
					<b>CN 89.1</b>
A2	C	Good Condition Open Space	74	12.1	894.8
	C	Impervious Cover 55% IC	98	11.2	1097.0
	D	Good Condition Open Space	80	4.0	323.4
	D	Impervious Cover 55% IC	98	4.9	484.1
	Totals			32.3	2799.4
					<b>CN 86.8</b>
A3	C	Good Condition Open Space	74	6.1	450.3
	C	Impervious Cover 50% IC	98	6.1	596.3
	D	Good Condition Open Space	80	2.1	167.7
	D	Impervious Cover 50% IC	98	2.1	205.5
	Totals			16.4	1419.8
					<b>CN 86.8</b>
A4(1)	C	Good Condition Open Space	74	0.9	67.9
	C	Impervious Cover 55% IC	98	1.1	109.8
	D	Good Condition Open Space	80	6.1	488.6
	D	Impervious Cover 55% IC	98	5.9	578.6
	Totals			14.0	1244.9
					<b>CN 88.6</b>
A4(2)	C	Fair Condition Open Space	79	2.3	180.5
	C	Impervious Cover 55% IC	98	2.8	273.7
	D	Fair Condition Open Space	84	1.2	101.9
	D	Impervious Cover 55% IC	98	0.7	69.1
	Totals			7.0	625.3
					<b>CN 89.4</b>
A5	C	Good Condition Open Space	74	0.9	65.7
	C	Impervious Cover 55% IC	98	1.1	106.4
	D	Good Condition Open Space	80	4.0	323.6
	D	Impervious Cover 55% IC	98	4.9	484.5
	Totals			11.0	980.1
					<b>CN 89.4</b>
OS-6	D	Good Condition Open Space	80	0.3	22.3
	D	Impervious Cover 55% IC	98	0.3	33.4
	Totals			0.6	55.7
					<b>CN 89.9</b>
OS-7	C	Good Condition Open Space	74	2.0	150.0
	C	Impervious Cover 55% IC	98	2.5	242.7
	D	Good Condition Open Space	80	0.2	12.6
	D	Impervious Cover 55% IC	98	0.2	18.9
	Totals			4.9	424.2
					<b>CN 87.4</b>

**PROPOSED CONDITIONS**



**PROPOSED CONDITIONS - SCS METHOD SUMMARY**

Area ID	DA (ac.)	IC (ac.)	IC (%)	TOC (min.)	TOC (hr.)	CN	Q2	Q10	Q25	Q100
A1	9.7	5.4	55%	21	0.35	89.1	17	34	44	61
A2	32.3	16.1	50%	34	0.57	86.8	42	90	117	162
A3	16.4	8.2	50%	23	0.39	86.8	25	54	70	97
A4(1)	14.0	7.0	50%	16	0.27	88.6	26	54	69	96
A4(2)	7.0	3.5	50%	18	0.30	89.4	13	26	34	47
A5	11.0	6.0	55%	20	0.33	89.4	20	40	52	71
OS-5	10.5	0.0	0%	30	0.49	83.1	13	29	38	54
OS-6	0.6	0.3	55%	8	0.13	89.9	1	3	4	5
OS-7	4.9	2.7	55%	10	0.17	87.4	10	21	27	37
<b>TOTAL</b>	<b>106.3</b>	<b>46.6</b>	<b>44%</b>							

**ANALYSIS POINT FLOW DISCHARGE (CFS)**

	ANALYSIS POINT FLOW DISCHARGE (CFS)			
	2 YR	10 YR	25 YR	100 YR
<b>ANALYSIS POINT 1</b>				
EXISTING	12	26	26	47
PROPOSED	9	15	20	42
<b>ANALYSIS POINT 2</b>				
EXISTING	38	89	120	170
PROPOSED	36	75	91	112
<b>ANALYSIS POINT 3</b>				
EXISTING	58	122	164	240
PROPOSED	55	111	147	214
<b>ANALYSIS POINT 4</b>				
EXISTING	113	247	321	445
PROPOSED	112	229	310	445

**DETENTION POND ROUTING SUMMARY**

POND 1				
STORM EVENT	INFLOW (CFS)	OUTFLOW (CFS)	WSEL	
2-YEAR	17	9	872.4	
10-YEAR	34	15	874.1	
25-YEAR	44	20	875.0	
100-YEAR	61	42	875.6	
POND 2				
STORM EVENT	INFLOW	OUTFLOW	WSEL	
2-YEAR	42	34	870.9	
10-YEAR	90	71	871.9	
25-YEAR	117	85	872.6	
100-YEAR	162	105	873.7	

\*POND 4 PRELIMINARY VOLUME IS 5 AC-FT.  
 \*DRAINAGE MODEL ASSUMES RELOCATION OF TEMPORARY DETENTION POND FROM SECTION 3, PHASE 6 (DRAINAGE AREA A-5)  
 \*PER EXISTING PLAT REQUIREMENTS, DETENTION SERVING THE COMMERCIAL TRACTS WITHIN THE OS-2 AND PR-2 DRAINAGE AREAS WILL BE PROVIDED ON AN INDIVIDUAL BASIS UNLESS A REGIONAL STORMWATER DETENTION FACILITY IS CONSTRUCTED TO SERVE SOME OR ALL OF THE LOTS IN THE FUTURE. THUS, THE DRAINAGE MODEL ASSUMES FUTURE POND E HAS BEEN CONSTRUCTED.

OS-7: FLOW DISCHARGES INTO NEIGHBORING SECTIONS AS ALLOWED BY PAPE DAWSON CONSTRUCTION PLANS, HOWEVER THIS AREA IS INCLUDED IN THE MODEL.

- NOTES:**
- ON-SITE DATA BY LENZ AND ASSOCIATES, INC DATED APRIL 2017. OTHER DATA SHOWN PROVIDED BY WILLIAMSON COUNTY, CAPCOG GIS, AND PAPE-DAWSON ENGINEERS, INC. NO WARRANTY IS EXPRESSED OR IMPLIED AS TO ITS ACCURACY.
  - REFER TO THE DRAINAGE REPORT OF ADDITIONAL INFORMATION.

TEXAS REGISTRATION #4932  
 P.O. BOX 3639  
 CEDAR PARK, TEXAS 78613  
 PHONE (512) 354-4652

**360 PROFESSIONAL SERVICES, INC.**

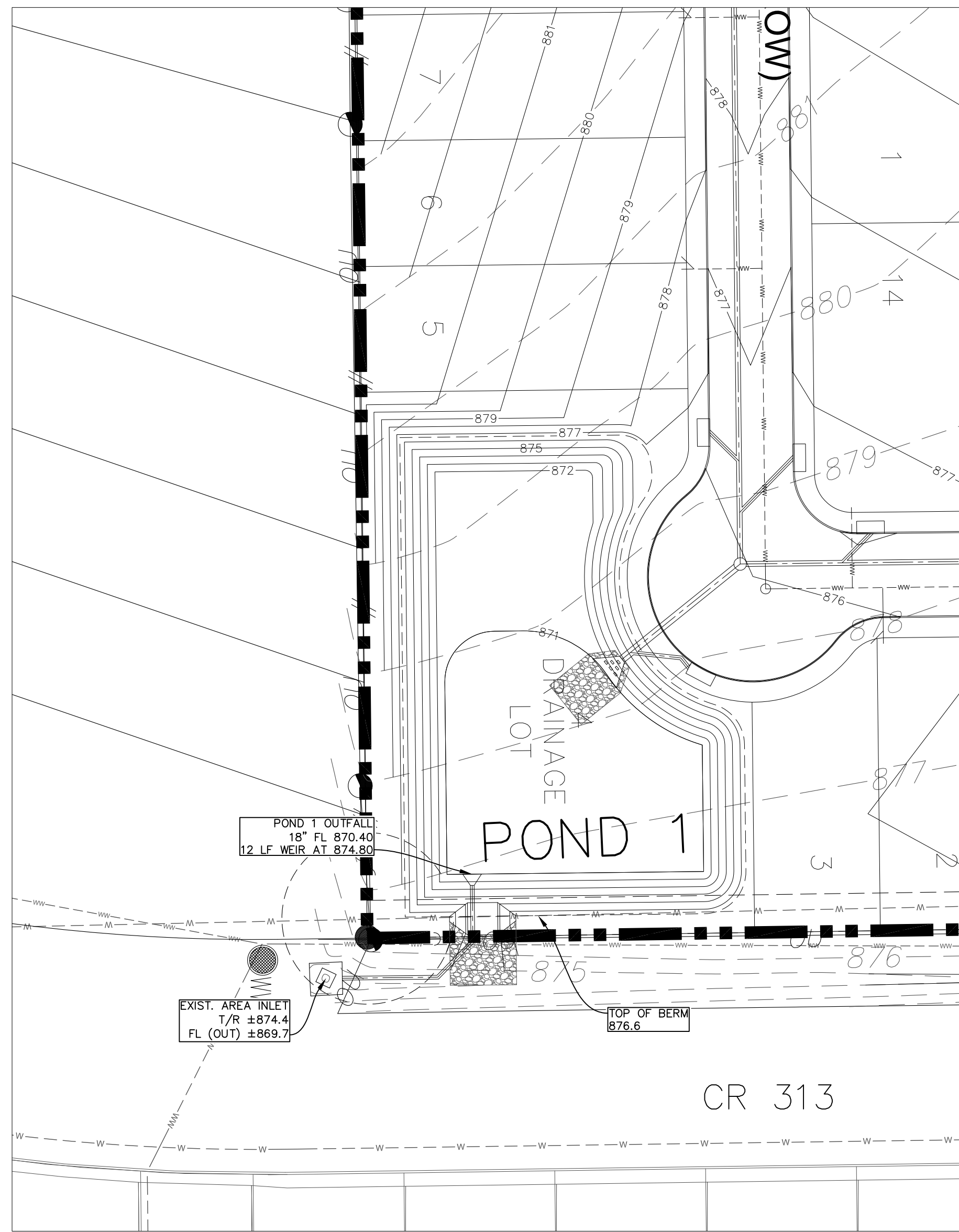
**SONTERRA WEST SECTION 12 JARRELL, TEXAS**

**OVERALL PROPOSED DRAINAGE AREA MAP**

Scale: AS SHOWN  
 Designed by:  
 Drawn by:  
 Checked by:  
 Date: APRIL 2018  
 Project No.

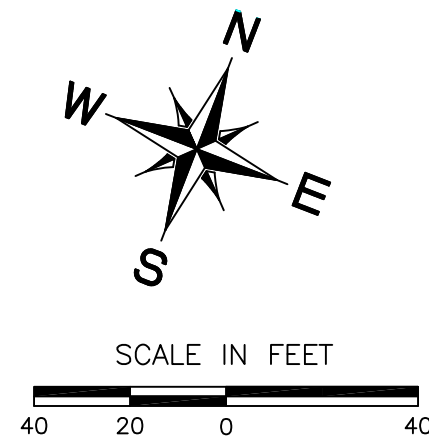
SHEET  
**09**

POND 1

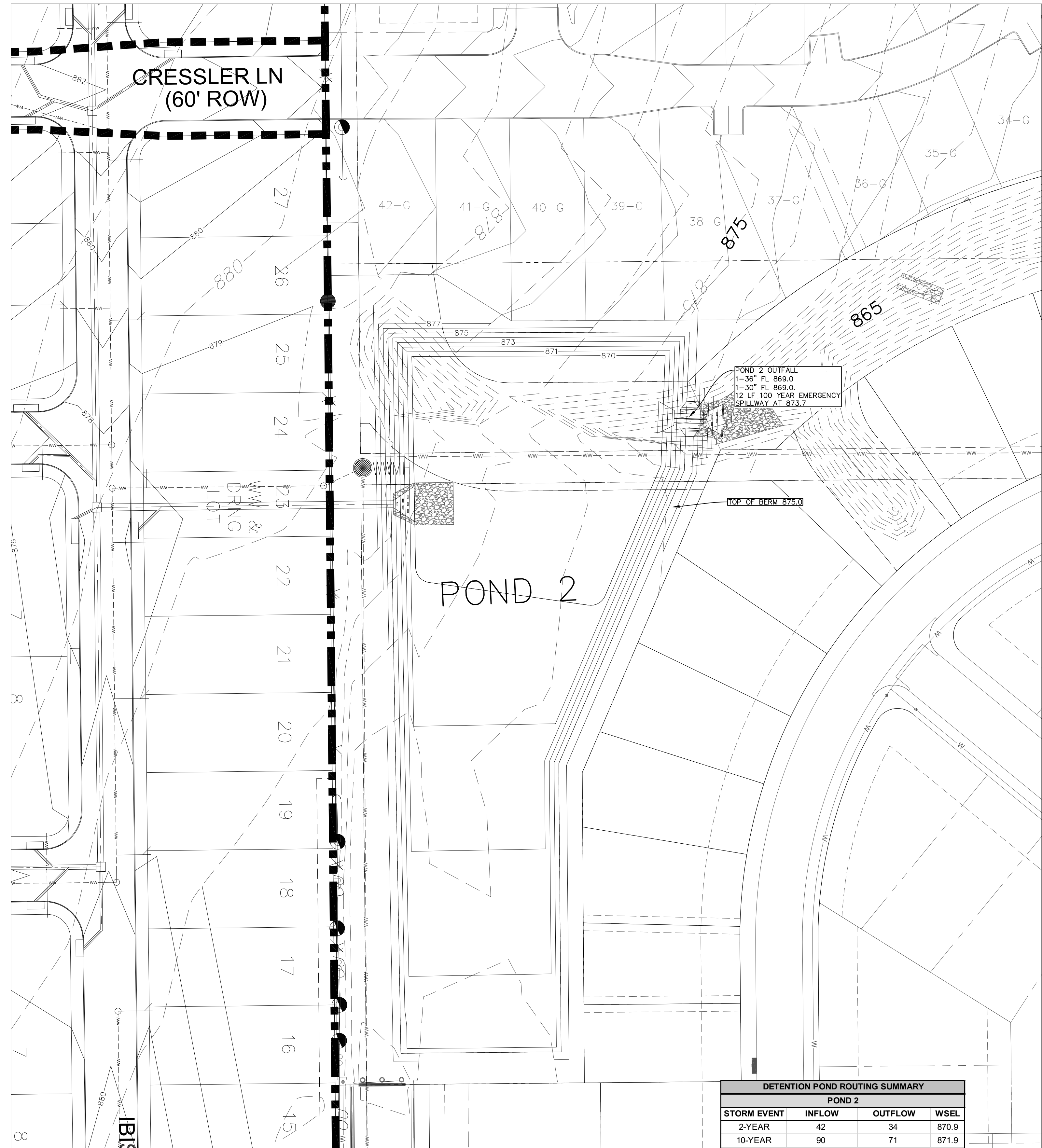


DETENTION POND ROUTING SUMMARY			
POND 1			
STORM EVENT	INFLOW (CFS)	OUTFLOW (CFS)	WSEL
2-YEAR	17	9	872.4
10-YEAR	34	15	874.1
25-YEAR	44	20	875.0
100-YEAR	61	42	875.6

Detention Pond 1 Stage/Volume/Discharge							
STAGE (FT)	CONTOUR AREA (AC)	INCREMENTAL VOLUME (ac-ft)	CUMULATIVE VOLUME (ac-ft)	CUMULATIVE VOLUME (CF)	Pipe #1	Weir #1	TOTAL Q (cfs)
					size (in)	length (ft)	
					18" @ 870.4	12 LF @ 874.8	
870.4	0.000	0.000	0.000	0	0.0	0.0	0.0
871.0	0.190	0.063	0.063	2750	1.4	0.0	1.4
872.0	0.305	0.245	0.308	13410	7.8	0.0	7.8
873.0	0.342	0.323	0.631	27474	11.6	0.0	11.6
874.0	0.381	0.361	0.991	43184	14.4	0.0	14.4
875.0	0.421	0.400	1.391	60610	16.7	3.2	19.9
876.0	0.462	0.441	1.832	79818	18.7	47.3	66.1
876.6	0.491	0.286	2.118	92265	19.9	86.9	106.8



POND 2

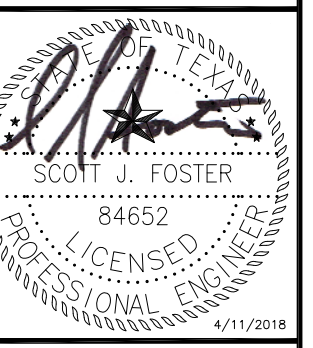


DETENTION POND ROUTING SUMMARY			
POND 2			
STORM EVENT	INFLOW	OUTFLOW	WSEL
2-YEAR	42	34	870.9
10-YEAR	90	71	871.9
25-YEAR	117	85	872.6
100-YEAR	162	105	873.7

Detention Pond 2 Stage/Volume/Discharge							
STAGE (FT)	CONTOUR AREA (AC)	INCREMENTAL VOLUME (ac-ft)	CUMULATIVE VOLUME (ac-ft)	CUMULATIVE VOLUME (CF)	Pipe #1	Pipe #2	TOTAL Q (cfs)
					size (in)	size (in)	
					1-36" @ 869	1-30" @ 869	
869.0	0.000	0.000	0.000	0	0.0	0.0	0.0
870.0	0.521	0.174	0.174	7558	5.6	5.0	10.5
871.0	0.765	0.638	0.812	35367	20.1	17.6	37.7
872.0	0.972	0.865	1.677	73061	41.7	31.3	72.9
873.0	1.196	1.082	2.759	120180	53.8	39.2	93.0
874.0	1.371	1.282	4.041	176020	63.7	45.8	109.4
875.0	1.455	1.411	5.452	237495	72.2	51.5	123.7

TEXAS REGISTRATION F4932  
P.O. BOX 3639  
CEDAR PARK, TEXAS 78613  
PHONE (512) 354-4652

360 PROFESSIONAL SERVICES, INC.



SONTERRA WEST  
SECTION 12  
JARRELL, TEXAS

DETENTION POND  
SCHEMATICS

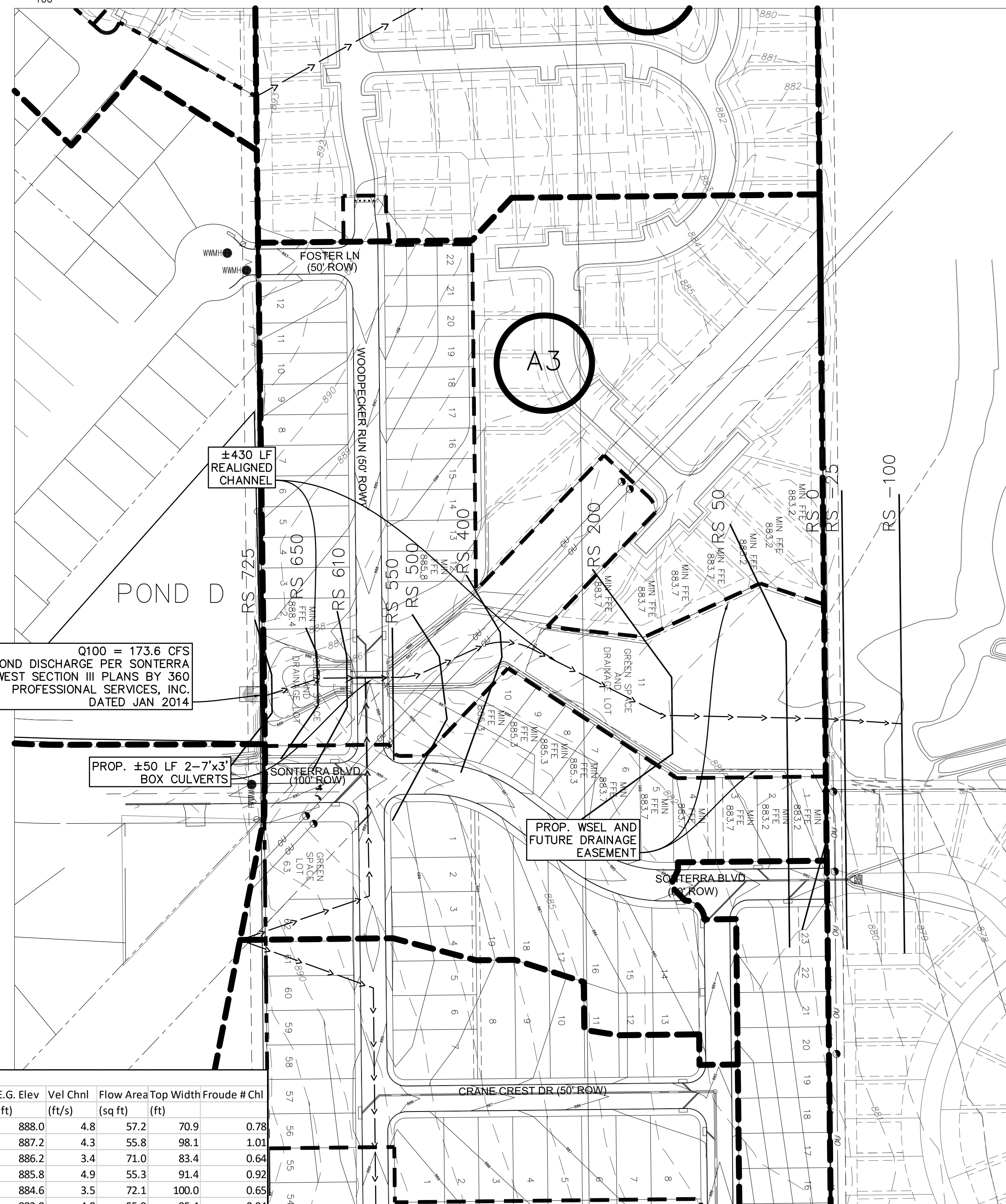
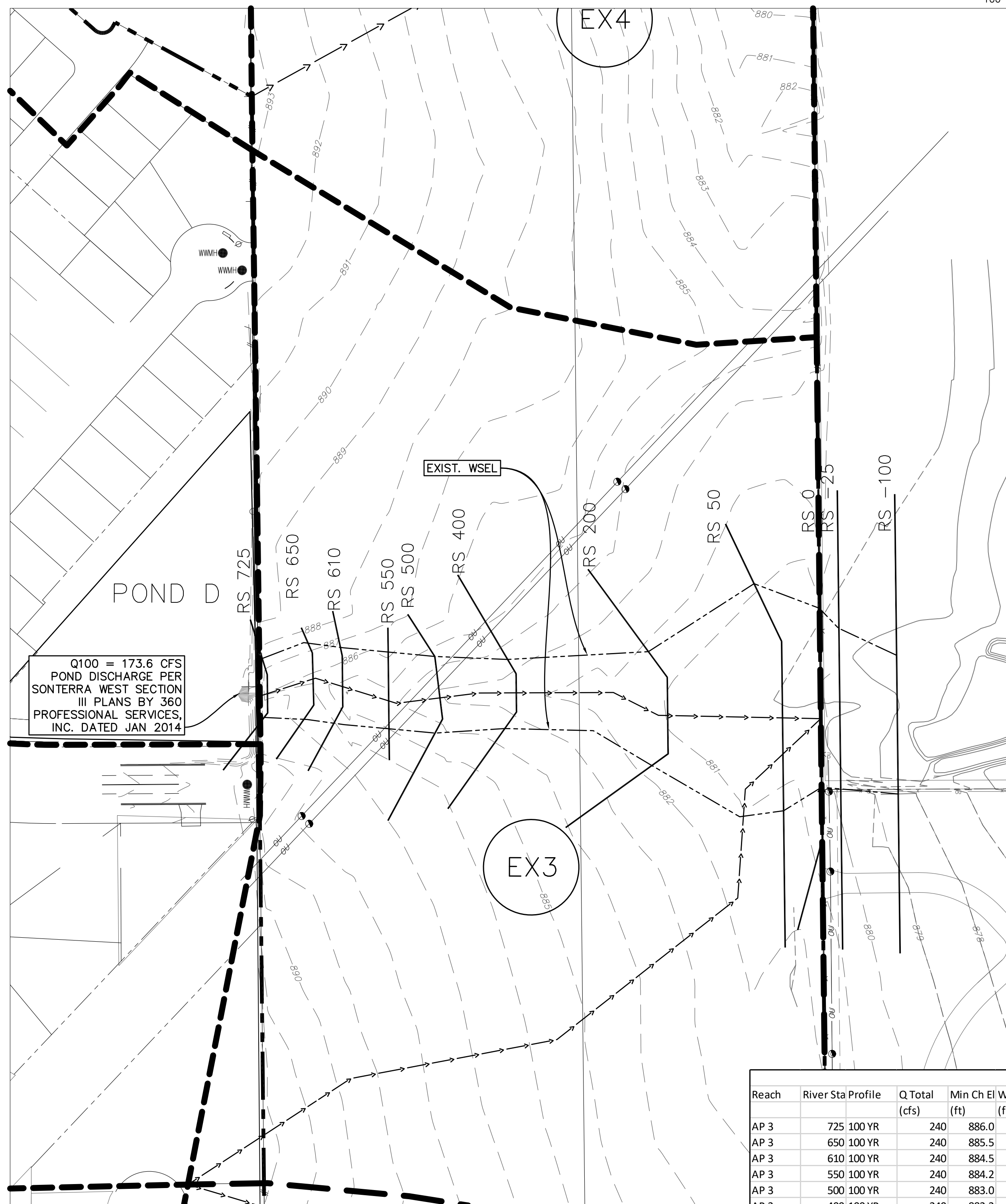
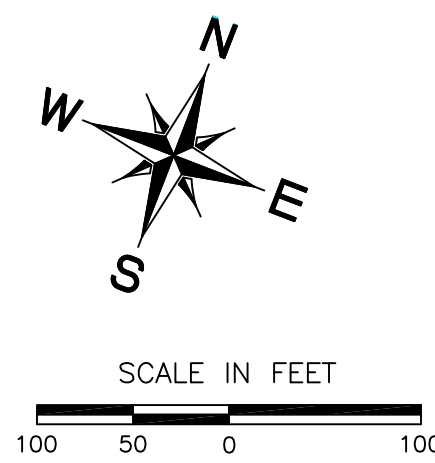
Scale: AS SHOWN  
Designed by:  
Drawn by:  
Checked by:  
Date: APRIL 2018  
Project No.

SHEET  
10

DATE: 4/17/2018 10:58:52 AM  
PROJECT: SONTERRA WEST SECTION 12  
DRAWN BY: J. W. HARRIS  
CHECKED BY: J. W. HARRIS  
DATE: 4/17/2018 10:58:52 AM  
PROJECT: SONTERRA WEST SECTION 12

EXISTING CONDITIONS

PROPOSED CONDITIONS



Existing											
Reach	River Sta Profile	Q Total	Min Ch El	W.S. Elev	Crit W.S.	E.G. Elev	Vel Chnl	Flow Area	Top Width	Froude #	Chl
		(cfs)	(ft)	(ft)	(ft)	(ft)	(ft/s)	(sq ft)	(ft)		
AP 3	725 100 YR	240	886.0	887.7	887.6	888.0	4.8	57.2	70.9	0.78	
AP 3	650 100 YR	240	885.5	886.9	886.9	887.2	4.3	55.8	98.1	1.01	
AP 3	610 100 YR	240	884.5	886.0	886.2	886.2	3.4	71.0	83.4	0.64	
AP 3	550 100 YR	240	884.2	885.5	885.5	885.8	4.9	55.3	91.4	0.92	
AP 3	500 100 YR	240	883.0	884.4	884.6	884.6	3.5	72.1	100.0	0.65	
AP 3	400 100 YR	240	882.3	883.5	883.5	883.8	4.8	55.9	95.4	0.94	
AP 3	200 100 YR	240	880.9	881.8	882.0	882.0	3.8	90.5	168.4	0.71	
AP 3	50 100 YR	240	880.3	881.2	881.2	881.2	1.8	138.5	311.0	0.44	
AP 3	0 100 YR	240	880.1	880.7	880.7	880.9	3.2	75.8	241.8	1	
AP 3	-25 100 YR	240	878.9	879.5	879.5	879.8	4.2	67.8	151.6	0.95	
AP 3	-100 100 YR	240	877.5	878.24	878.18	878.35	2.71	93.41	273.31	0.75	
Proposed											
Reach	River Sta Profile	Q Total	Min Ch El	W.S. Elev	Crit W.S.	E.G. Elev	Vel Chnl	Flow Area	Top Width	Froude #	Chl
		(cfs)	(ft)	(ft)	(ft)	(ft)	(ft/s)	(sq ft)	(ft)		
AP 3	725 100 YR	214	886	887.3	887.3	887.7	5.0	43.9	62.4	0.98	
AP 3	650 100 YR	214	883.9	886.5	886.5	886.5	2.0	104.8	53.8	0.26	
AP 3	610 100 YR	214	883.1	886.3	884.7	886.5	3.8	56.9	44.6	0.37	
AP 3	595 Culvert										
AP 3	550 100 YR	214	882.9	884.5	884.5	885.3	7.0	30.5	30.1	1	
AP 3	500 100 YR	214	882.5	883.9	884.0	884.0	2.7	79.8	71.4	0.45	
AP 3	400 100 YR	214	882.25	883.3	883.2	883.5	3.8	57.0	84.1	0.8	
AP 3	200 100 YR	214	880.9	881.7	881.9	881.9	2.6	82.4	167.6	0.65	
AP 3	50 100 YR	214	880.3	881.2	881.2	881.2	1.7	130.5	260.8	0.4	
AP 3	0 100 YR	214	880.1	880.8	880.8	880.9	3.3	64.4	193.8	1.02	
AP 3	-25 100 YR	214	878.9	879.5	879.5	879.7	4.0	61.7	146.6	0.96	
AP 3	-100 100 YR	214	877.5	878.22	878.15	878.32	2.6	86.44	266.82	0.74	

Q TOTAL MODELED IN HEC-RAS IS THE 100-YEAR STORM EVENT FLOW FROM THE OVERALL POND PACK MODEL. REF. SHEETS 08 AND 09.

TEXAS REGISTRATION F4932  
 P.O. BOX 3639  
 CEDAR PARK, TEXAS 78613  
 PHONE (512) 354-4652

**360** PROFESSIONAL SERVICES, INC.

**SONTERRA WEST SECTION 12**  
**JARRELL, TEXAS**

**HEC-RAS CHANNEL SCHEMATIC**

Scale: AS SHOWN  
 Designed by: \_\_\_\_\_  
 Drawn by: \_\_\_\_\_  
 Checked by: \_\_\_\_\_  
 Date: APRIL 2018  
 Project No. \_\_\_\_\_

SHEET  
**11**

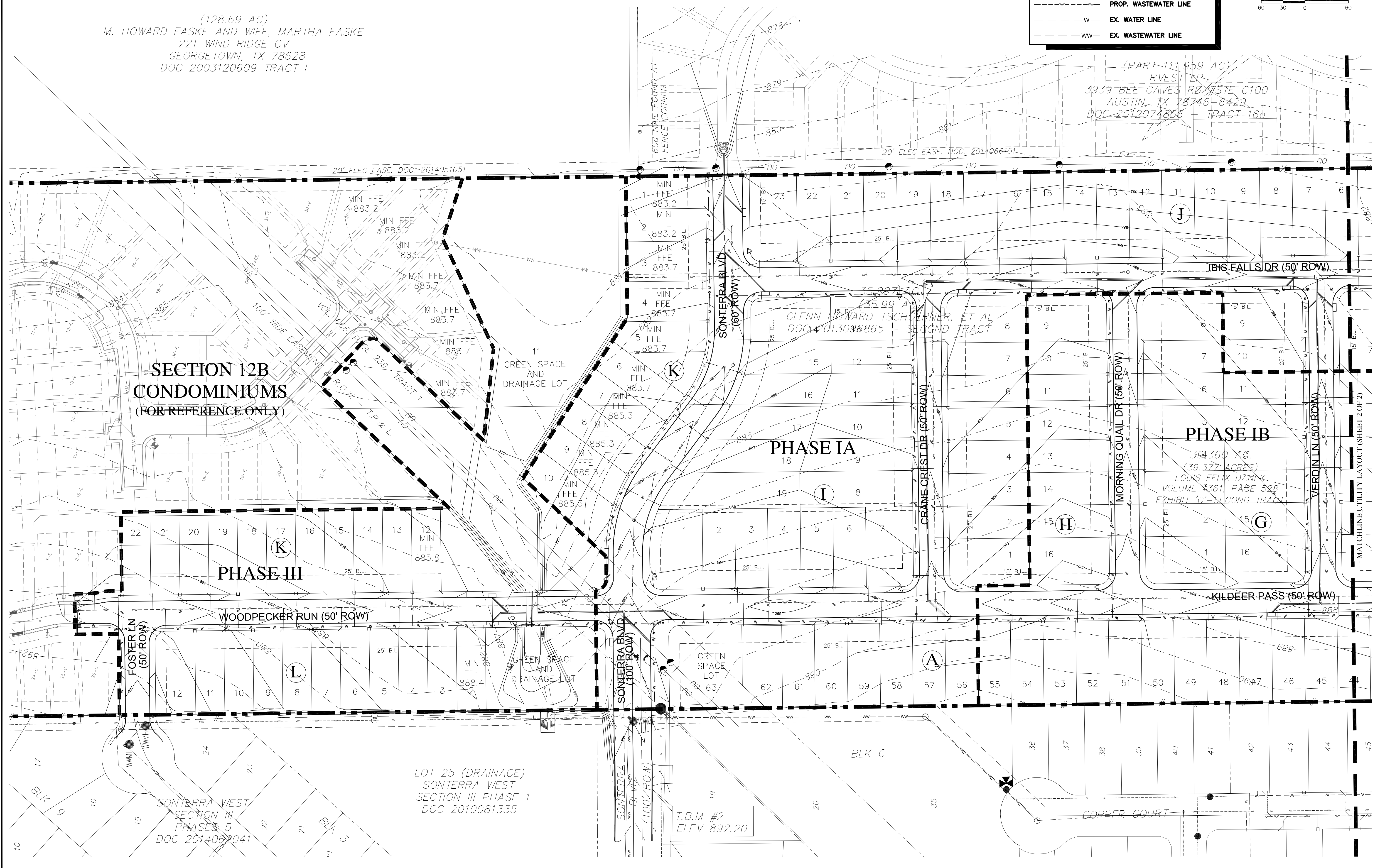
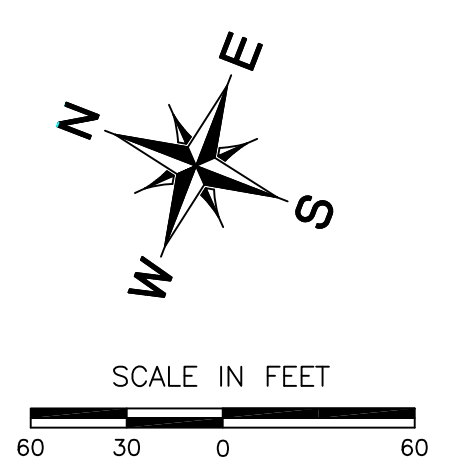
PROJECT DATE: 4/1/2018 1:30:25 PM  
 PROJECT LOCATION: SONTERRA WEST SECTION 12, JARRELL, TEXAS  
 DRAWING NO.: 20170212L\_0520200989\_1\_Hydrologic\_Sol\_Group.rvt S.F. Sgn.rvt  
 PLOT DATE: 4/1/2018 1:30:25 PM  
 PLOT SCALE: 1"=50'-0"  
 PLOT SHEET: 11 OF 11  
 PLOT STATUS: OK  
 PLOT MESSAGE: No errors or warnings were detected.



(128.69 AC)  
 M. HOWARD FASKE AND WIFE, MARTHA FASKE  
 221 WIND RIDGE CV  
 GEORGETOWN, TX 78628  
 DOC 2003120609 TRACT 1

**LEGEND**

	SUBJECT PROPERTY
	PHASE LINES
	PROPERTY LINES
	PROP. WATER LINE
	PROP. WASTEWATER LINE
	EX. WATER LINE
	EX. WASTEWATER LINE



**SECTION 12B  
 CONDOMINIUMS  
 (FOR REFERENCE ONLY)**

**PHASE III**

**PHASE IA**

**PHASE IB**

LOT 25 (DRAINAGE)  
 SONTERRA WEST  
 SECTION III PHASE 1  
 DOC 2010081335

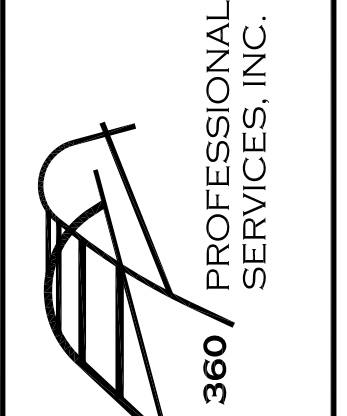
T.B.M #2  
 ELEV 892.20

(PART 111.959 AC)  
 RVEST LP  
 3939 BEE CAVES RD #STE C100  
 AUSTIN, TX 78746-6429  
 DOC 2012074886 TRACT 166

35.99 AC  
 GLENN HOWARD TSCHOLNER, ET AL  
 DOC 2013095865 - SECOND TRACT

39.360 AC  
 (39.377 ACRES)  
 LOUIS FELIX DANEK  
 VOLUME 3361, PAGE 528  
 EXHIBIT 'C' - SECOND TRACT

TEXAS REGISTRATION F4932  
 P.O. BOX 3639  
 CEDAR PARK, TEXAS 78613  
 PHONE (512) 354-4652



SCOTT J. FOSTER  
 84652  
 LICENSED PROFESSIONAL ENGINEER  
 4/1/2018

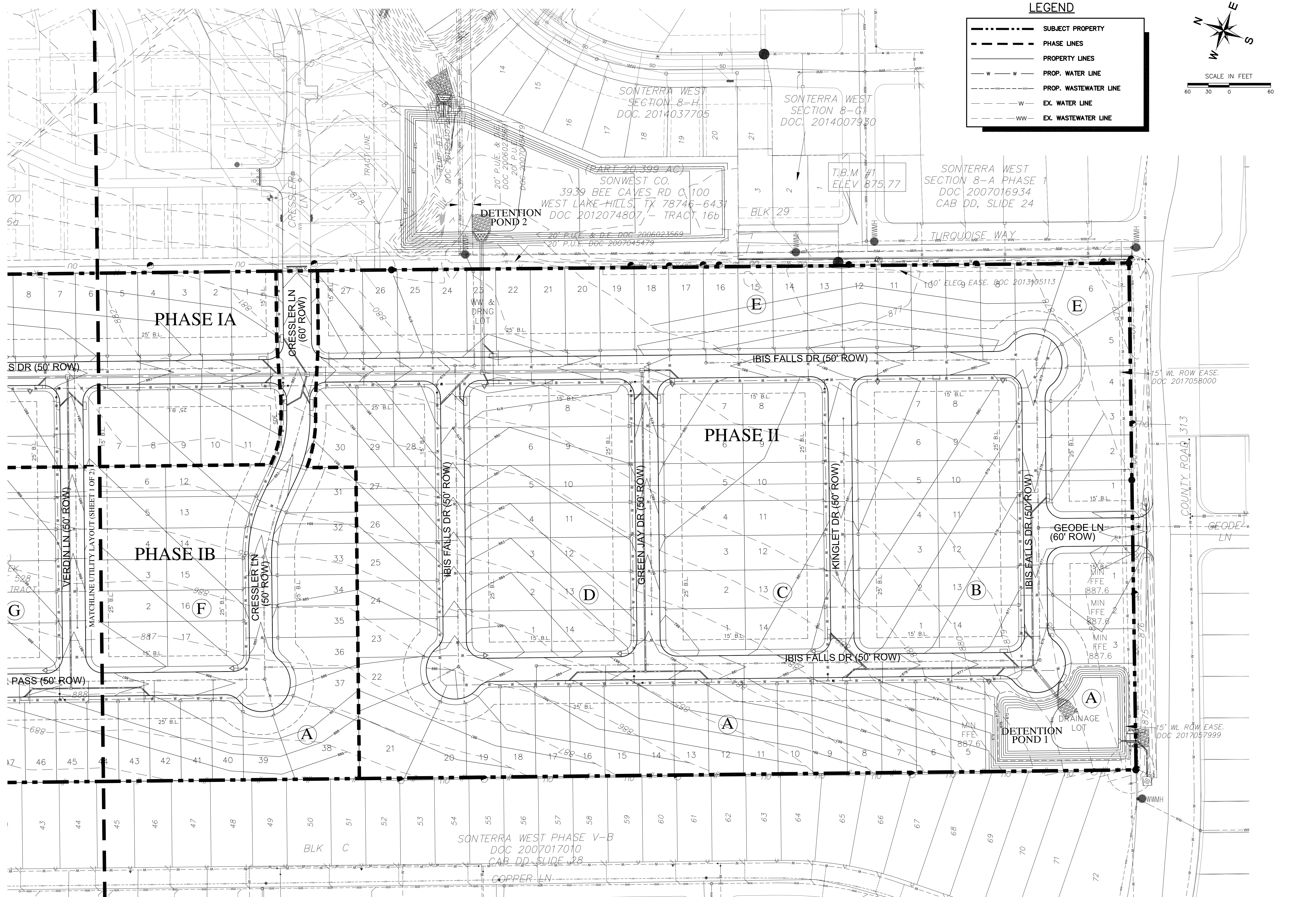
**SONTERRA WEST  
 SECTION 12  
 JARRELL, TEXAS**

**UTILITY LAYOUT  
 (SHEET 1 OF 2)**

Scale: AS SHOWN  
 Designed by:  
 Drawn by:  
 Checked by:  
 Date: APRIL 2018  
 Project No.

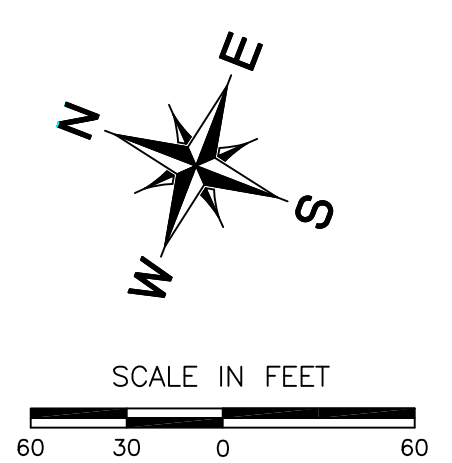
SHEET  
**13**

DATE: 4/1/2018 3:36pm PLOT D BY: cml  
 LAYOUT: 13 Utility PLOT DATE: 4/1/2018 3:36pm PLOT D BY: cml  
 NOTES: 2x35 vps replacement survey, 3000' x 100'



**LEGEND**

--- (thick dashed line)	SUBJECT PROPERTY
- - - (medium dashed line)	PHASE LINES
— (solid line)	PROPERTY LINES
— W — (line with 'W' markers)	PROP. WATER LINE
- - - W - - - (dashed line with 'W' markers)	PROP. WASTEWATER LINE
— W — (line with 'W' markers)	EX. WATER LINE
- - - W - - - (dashed line with 'W' markers)	EX. WASTEWATER LINE



TEXAS REGISTRATION F4932  
 P.O. BOX 3639  
 CEDAR PARK, TEXAS 78613  
 PHONE (512) 354-4652

**360** PROFESSIONAL SERVICES, INC.



**SONTERRA WEST  
 SECTION 12  
 JARRELL, TEXAS**

**UTILITY LAYOUT  
 (SHEET 2 OF 2)**

Scale: AS SHOWN  
 Designed by:  
 Drawn by:  
 Checked by:  
 Date: APRIL 2018  
 Project No.

SHEET  
**14**

C:\Users\jfo\Documents\Projects\2018\20180401\_Sonterra West Section 12\Utility\Utility.dwg PLOT DATE: 4/17/2018 3:36pm PLOTED BY: cfo  
 PAGES: 2/235 vps professional services, inc.