

WORK AUTHORIZATION NO. 3

**PROJECT: Engineering Design Services for Drainage Improvements on CR 150, CR 460
and CR 463**

This Work Authorization is made pursuant to the terms and conditions of the Williamson County Contract for Engineering Services, being dated March 6, 2018 and entered into by and between Williamson County, Texas, a political subdivision of the State of Texas, (the "County") and Alliance Transportation Group (the "Engineer").

Part 1. The Engineer will provide the following Engineering Services set forth in Attachment "B" of this Work Authorization.

Part 2. The maximum amount payable for services under this Work Authorization without modification is \$60,000.00.

Part 3. Payment to the Engineer for the services established under this Work Authorization shall be made in accordance with the Contract.

Part 4. This Work Authorization shall become effective on the date of final acceptance and full execution of the parties hereto and shall terminate on March 31, 2019. The Engineering Services set forth in Attachment "B" of this Work Authorization shall be fully completed on or before said date unless extended by a Supplemental Work Authorization.

Part 5. This Work Authorization does not waive the parties' responsibilities and obligations provided under the Contract.

Part 6. County believes it has sufficient funds currently available and authorized for expenditure to finance the costs of this Work Authorization. Engineer understands and agrees that County's payment of amounts under this Work Authorization is contingent on the County receiving appropriations or other expenditure authority sufficient to allow the County, in the exercise of reasonable administrative discretion, to continue to make payments under this Contract. It is further understood and agreed by Engineer that County shall have the right to terminate this Contract at the end of any County fiscal year if the governing body of County does not appropriate sufficient funds as determined by County's budget for the fiscal year in question. County may effect such termination by giving written notice of termination to Engineer.

Part 7. This Work Authorization is hereby accepted and acknowledged below.

EXECUTED this 8 day of May, 2018.

ENGINEER:

Alliance Transportation Group

COUNTY:

Williamson County, Texas

By: [Signature]
Signature

By: Valerie Covey
Signature

Clint Jumper
Printed Name

Valerie Covey
Printed Name

VP, Engineering
Title

Commissioner, Presiding Officer
Title

LIST OF ATTACHMENTS

Attachment A - Services to be Provided by County

Attachment B - Services to be Provided by Engineer

Attachment C - Work Schedule

Attachment D - Fee Schedule

Attachment A

Services to be Provided by County

Williamson County Road & Bridge Division personnel will provide

- Project direction, review and oversight.
- Easement document preparation and acquisition for temporary construction and drainage easements.
- Construction oversight, administration and management.

Attachment B

Services to be Provided by the Engineer

Project Locations

1. CR 150 - From CR 148 to FM 972
2. CR 460 - From CR 462 to CR 463
3. CR 463 - From CR 462 to CR 460

Task 1: Project Management

Attend Progress Review Meetings with County Road & Bridge department at 50%, 90% and Final.
Prepare monthly progress reports and invoices. Maintain project schedule and perform QA/QC.

Task 2: Topographic and R.O.W. Surveys

N/A

Task 3: Preliminary Engineering

Delineate drainage areas and perform runoff calculations for 5-yr, 10-yr, 25-yr storm events for parallel driveway pipes and non-bridge class cross culverts within the project limits, including Data Collection and Field Reconnaissance. Provide a scroll plot (1"=100') showing drainage area boundaries, time of concentration path, drainage area I.D., drainage areas (acres), with 2' LIDAR contours and aerial background provided by County. Provide table showing runoff calculation results.

Task 4: Geotechnical Investigation

N/A

Task 5: Environmental Studies

N/A

Task 6: Utility Coordination

N/A

Task 7: FEMA Coordination

N/A

Task 8: Final Engineering

Calculate capacity of existing parallel driveway pipes and non-bridge class cross culverts. Determine parallel driveway pipes and non-bridge class culverts in need of replacement due to condition, inadequate capacity, or safety treatment. Provide 11x17 Plan & Plan Layout sheets (1"=50') for proposed improvements to parallel driveway pipes and non-bridge class cross culverts showing roadway centerline, stationing, approximate ROW, 2' LIDAR contours provided by County and aerial background. Provide Quantity Summary table for proposed drainage facility improvements. Provide exhibits (8.5"x11" Plan View) for Temporary Construction and/or Drainage Easements to

facility construction of proposed drainage improvements. Exhibits shall show roadway centerline, approximate ROW line, boundary and dimensions of proposed easement for the use in preparing easement documents by others.

Task 9: Bidding Phase Services

N/A

Task 10: Construction Phase Services

N/A

Deliverables:

50% Submittal:

- 2 copies of Scroll Plots of Drainage Areas and runoff calculations
- Quantity Summary
- Engineer's internal QA/QC marked up set

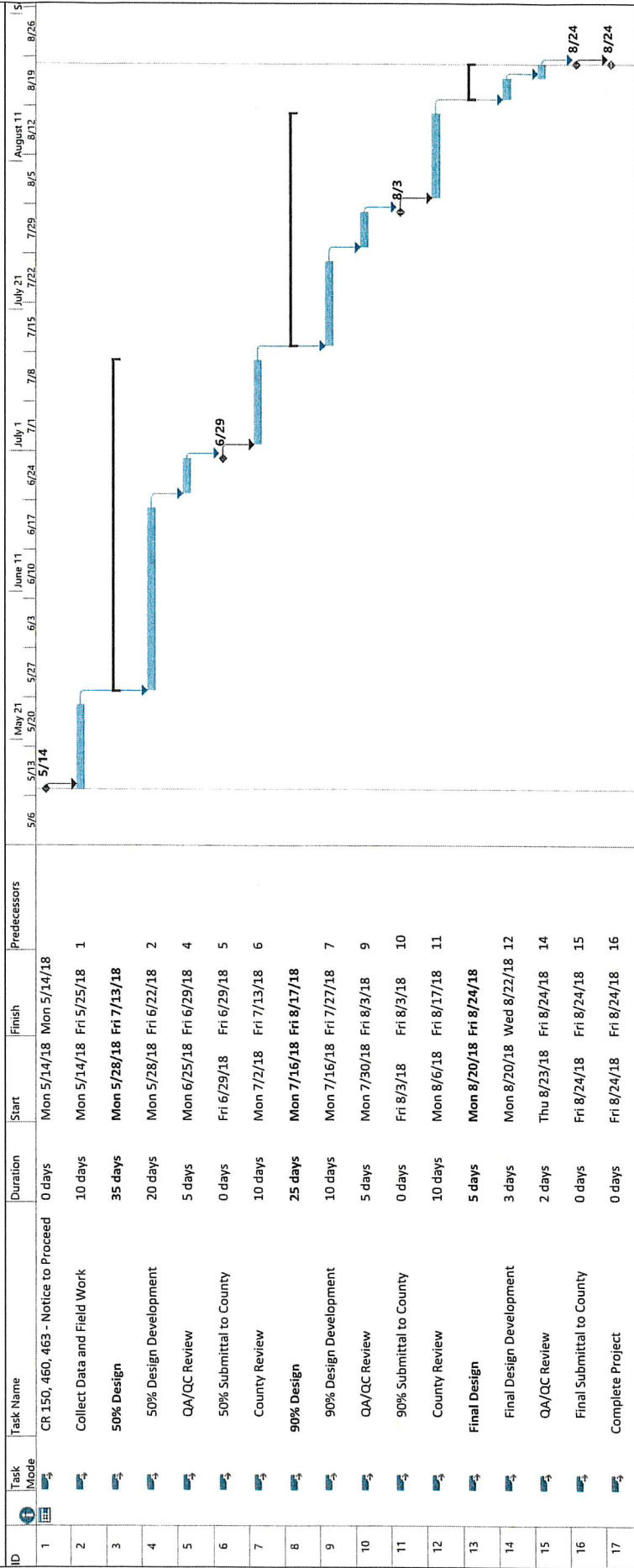
90% Submittal:

- 2 paper copies of 11" x 17" Plan Sheets
- 2 paper copies Temporary Construction and Drainage Easement Exhibits on 8.5" x 11"
- Quantity Summary
- Engineer's internal QA/QC marked up set

Final Submittal:

- 2 paper copies of 11" x 17" Plan Sheets
- 2 paper copies of Temporary Construction and Drainage Easement Exhibits on 8.5" x 11"
- Quantity Summary
- Engineer's internal QA/QC marked up set
- Electronic copy of submittal documents in PDF format on CD

Attachment C



Project: Wilco - Small Drainage & Roadway Design - WA03
Date: Fri 4/20/18

Task Summary

Task: Manual Task

Split: Manual Task

Milestone: Manual Milestone

Summary: Manual Summary

Project Summary: Project Summary

Inactive Task: Inactive Task

Inactive Milestone: Inactive Milestone

Inactive Summary: Inactive Summary

Manual Task Rollup: Manual Task Rollup

Manual Summary: Manual Summary

Start-only: Start-only

Finish-only: Finish-only

External Tasks: External Tasks

External Milestone: External Milestone

Deadline: Deadline

Progress: Progress

Manual Progress: Manual Progress

Williamson County Small Drainage & Roadway Design (1711-206) - WAO3
 Attachment D
 Stabilize Projects
 CR 150 - from CR 148 to FM 972
 CR 460 - from CR 452 to CR 463
 CR 463 - from CR 462 to CR 460

Task Description	Project Principal	Senior Project Manager	Project Manager	Hydraulic Engineer	Senior Engineer	Project Engineer	Engineer In-Training	Senior Engineering Technician	Engineering Technician	Project Administrator	Clerical	Total Labor Hours & Costs
Task 1-Project Management:												
1.1 Progress Review Meetings (3 meetings: 50%, 90% & Final)	3		9	9		9				3	3	30
1.2 Invoicing and Progress Reports (3 months)			3									9
1.3 Subconsultants												0
1.4 QA/QC of Deliverables at 50%, 90% and FINAL			9	6								15
Labor Hours Subtotal	3	0	21	15	0	9	0	0	0	3	3	54
Contract Labor Rate Per Hour	\$ 265.00	\$ 244.00	\$ 230.00	\$ 210.00	\$ 205.00	\$ 160.00	\$ 115.00	\$ 133.00	\$ 92.00	\$ 104.00	\$ 85.00	
Labor Costs Subtotal	\$ 795.00	\$ 4,830.00	\$ 4,830.00	\$ 3,150.00	\$ 2,050.00	\$ 1,440.00	\$ 1,150.00	\$ 1,330.00	\$ 92.00	\$ 312.00	\$ 255.00	\$ 40,782.00

Task Description	Project Principal	Senior Project Manager	Project Manager	Hydraulic Engineer	Senior Engineer	Project Engineer	Engineer In-Training	Senior Engineering Technician	Engineering Technician	Project Administrator	Clerical	Total Labor Hours & Costs
Task 2- Topographic and R.O.W. Surveys:												
N/A												0
Labor Hours Subtotal	0	0	0	0	0	0	0	0	0	0	0	0
Contract Labor Rate Per Hour	\$ 265.00	\$ 244.00	\$ 230.00	\$ 210.00	\$ 205.00	\$ 160.00	\$ 115.00	\$ 133.00	\$ 92.00	\$ 104.00	\$ 85.00	
Labor Costs Subtotal	\$ 0	\$ 0	\$ 0	\$ 0	\$ 0	\$ 0	\$ 0	\$ 0	\$ 0	\$ 0	\$ 0	\$ 0

Task Description	Project Principal	Senior Project Manager	Project Manager	Hydraulic Engineer	Senior Engineer	Project Engineer	Engineer In-Training	Senior Engineering Technician	Engineering Technician	Project Administrator	Clerical	Total Labor Hours & Costs
Task 3- Preliminary Engineering:												
3.1 Site Visit & Field Recon				8			8					16
3.2 Delineate Drainage Areas												0
CR 150			1	3			8					12
CR 460 & CR 463			2	6			16					24
3.3 Calculate Peak Stormwater Runoff Rates			1	8			24					33
3.4 Scroll plot showing drainage area boundaries, time of concentration paths, and areas (Ac)			1	3					6			0
CR 150			2	6					8			26
CR 460 & CR 463			1	4			4					11
3.5 Drainage Memo												0
Labor Hours Subtotal	0	0	8	38	0	2	78	0	14	0	0	140
Contract Labor Rate Per Hour	\$ 265.00	\$ 244.00	\$ 230.00	\$ 210.00	\$ 205.00	\$ 160.00	\$ 115.00	\$ 133.00	\$ 92.00	\$ 104.00	\$ 85.00	
Labor Costs Subtotal	\$ 0	\$ 1,970.00	\$ 1,870.00	\$ 7,980.00	\$ 2,050.00	\$ 320.00	\$ 8,970.00	\$ 0	\$ 1,288.00	\$ 104.00	\$ 85.00	\$ 20,998.00

Task Description	Project Principal	Senior Project Manager	Project Manager	Hydraulic Engineer	Senior Engineer	Project Engineer	Engineer - In-Training	Senior Engineering Technician	Engineering Technician	Project Administrator	Clerical	Total Labor Hours & Costs
Task 4: Geotechnical Investigation												0
N/A												0
Labor Hours Subtotal	0	0	0	0	0	0	0	0	0	0	0	0
Contract Labor Rate Per Hour	\$ 265.00	\$ 244.00	\$ 230.00	\$ 210.00	\$ 205.00	\$ 160.00	\$ 115.00	\$ 133.00	\$ 92.00	\$ 104.00	\$ 85.00	
Labor Costs Subtotal	\$	\$	\$	\$	\$	\$	\$	\$	\$	\$	\$	\$

Task Description	Project Principal	Senior Project Manager	Project Manager	Hydraulic Engineer	Senior Engineer	Project Engineer	Engineer - In-Training	Senior Engineering Technician	Engineering Technician	Project Administrator	Clerical	Total Labor Hours & Costs
Task 5: Environmental Studies												0
N/A												0
Labor Hours Subtotal	0	0	0	0	0	0	0	0	0	0	0	0
Contract Labor Rate Per Hour	\$ 265.00	\$ 244.00	\$ 230.00	\$ 210.00	\$ 205.00	\$ 160.00	\$ 115.00	\$ 133.00	\$ 92.00	\$ 104.00	\$ 85.00	
Labor Costs Subtotal	\$	\$	\$	\$	\$	\$	\$	\$	\$	\$	\$	\$

Task Description	Project Principal	Senior Project Manager	Project Manager	Hydraulic Engineer	Senior Engineer	Project Engineer	Engineer - In-Training	Senior Engineering Technician	Engineering Technician	Project Administrator	Clerical	Total Labor Hours & Costs
Task 6: Utility Coordination												0
N/A												0
Labor Hours Subtotal	0	0	0	0	0	0	0	0	0	0	0	0
Contract Labor Rate Per Hour	\$ 265.00	\$ 244.00	\$ 230.00	\$ 210.00	\$ 205.00	\$ 160.00	\$ 115.00	\$ 133.00	\$ 92.00	\$ 104.00	\$ 85.00	
Labor Costs Subtotal	\$	\$	\$	\$	\$	\$	\$	\$	\$	\$	\$	\$

Task Description	Project Principal	Senior Project Manager	Project Manager	Hydraulic Engineer	Senior Engineer	Project Engineer	Engineer - In-Training	Senior Engineering Technician	Engineering Technician	Project Administrator	Clerical	Total Labor Hours & Costs
Task 7: FEMA Coordination												0
N/A												0
Labor Hours Subtotal	0	0	0	0	0	0	0	0	0	0	0	0
Contract Labor Rate Per Hour	\$ 265.00	\$ 244.00	\$ 230.00	\$ 210.00	\$ 205.00	\$ 160.00	\$ 115.00	\$ 133.00	\$ 92.00	\$ 104.00	\$ 85.00	
Labor Costs Subtotal	\$	\$	\$	\$	\$	\$	\$	\$	\$	\$	\$	\$

DESCRIPTION	TOTAL WRS BY TASK	TOTAL COST BY TASK
Task 1: Project Management	54	\$ 10,782.00
Task 2: Topographic and R.O.W. Surveys	0	\$ -
Task 3: Preliminary Engineering	140	\$ 20,398.00
Task 4: Geotechnical Investigation	0	\$ -
Task 5: Environmental Studies	0	\$ -
Task 6: Utility Coordination	0	\$ -
Task 7: FEMA Coordination	0	\$ -
Task 8: Final Engineering	0	\$ -
Task 9: Bidding Phase Services	204	\$ 26,160.00
Task 10: Construction Phase Services	0	\$ -
SUBTOTAL LABOR COST:	398	\$ 57,340.00

DESCRIPTION	Unit	Cost/Unit	Quantity	Total Cost
Mileage	mile			\$ -
Standard Postage - Letter	each			\$ -
Certified Letter Return Receipt	each			\$ -
Overnight Mail - Letter Size	each	\$ 25.00		\$ -
Overnight Mail - Oversized Box	each	\$ 30.00		\$ -
Courier Services	each	\$ 50.00		\$ -
Photocopies B/W (8 1/2" x 11")	each	\$ 0.25	48	\$ 12.00
Photocopies B/W (11" x 17")	each	\$ 1.48	48	\$ 74.00
Photocopies Color (8 1/2" x 11")	each	\$ 1.00		\$ -
Photocopies Color (11" x 17")	each	\$ 2.00		\$ -
Plots (B/W on Bond)	square foot	\$ 6.00		\$ -
Plots (Color on Bond)	square foot	\$ 8.00	180	\$ 1,440.00
CDs	each	\$ 0.50		\$ -
SUBTOTAL DIRECT EXPENSES				\$ 1,526.00

SUBTOTAL LABOR COST	\$ 57,340.00
SUBTOTAL DIRECT EXPENSE	\$ 1,526.00
TOTAL	\$ 58,866.00