



**SUPPLEMENTAL WORK AUTHORIZATION NO. 2  
TO  
WORK AUTHORIZATION NO. 3**

**WILLIAMSON COUNTY ROAD BOND PROJECT:  
COUNTY ROAD 200**

This Supplemental Work Authorization No. 2 to Work Authorization No. 3 is made pursuant to the terms and conditions of the Williamson County Contract for Engineering Services, being dated September 30, 2014 ("Contract") and entered into by and between Williamson County, Texas, a political subdivision of the State of Texas, (the "County") and O'Brien Engineering Services, LLC (the "Engineer").

WHEREAS, the County and the Engineer executed Work Authorization No. 3 dated effective January 29, 2016 (the "Work Authorization");

WHEREAS, pursuant to Article 14 of the Contract, amendments, changes and modifications to a fully executed Work Authorization shall be made in the form of a Supplemental Work Authorization; and

WHEREAS, it has become necessary to amend, change and modify the Work Authorization.

**AGREEMENT**

NOW, THEREFORE, premises considered, the County and the Engineer agree that the Work Authorization shall be amended, changed and modified as follows:

- I. The Services to be Provided by the Engineer that were set out in the original Attachment "B" of the Work Authorization are hereby amended, changed and modified as shown in the attached revised Attachment "B" (must be attached).
- II. The Work Authorization shall terminate on August 30, 2019. The Services to be Provided by the Engineer shall be fully completed on or before said date unless extended by an additional Supplemental Work Authorization. The revised Work Schedule is attached hereto as Attachment "C" (must be attached).
- III. The maximum amount payable for services under the Work Authorization is hereby increased from \$350,384.12 to \$384,369.64. The revised Fee Schedule is attached hereto as Attachment "D" (must be attached).

Except as otherwise amended by prior or future Supplemental Work Authorizations, all other terms of the Work Authorization are unchanged and will remain in full force and effect.

This Supplemental Work Authorization does not waive the parties' responsibilities and obligations provided under the Contract.

IN WITNESS WHEREOF, the County and the Engineer have executed this Supplemental Work Authorization, in duplicate, to be effective as of the date of the last party's execution below.

**ENGINEER:**  
**O'BRIEN ENGINEERING SERVICES, LLC**

By: Teri O'Brien  
Signature

Teri O'Brien  
Printed Name

CEO & President  
Title

05/03/18  
Date

**COUNTY:**

By: Cynthia Long  
Signature

Cynthia Long  
Printed Name

Commissioner Pet 2  
Title

5/22/18  
Date

**LIST OF ATTACHMENTS**

Attachment B - Services to be Provided by Engineer

Attachment C - Work Schedule

Attachment D - Fee Schedule

**IN WITNESS WHEREOF**, the County and the Engineer have executed this Supplemental Work Authorization, in duplicate, to be effective as of the date of the last party's execution below.

**ENGINEER:**  
**O'BRIEN ENGINEERING SERVICES, LLC**

**COUNTY:**

By: Teri O'Brien  
Signature

By: \_\_\_\_\_  
Signature

Teri O'Brien  
Printed Name

\_\_\_\_\_  
Printed Name

CEO & President  
Title

\_\_\_\_\_  
Title

05/03/18  
Date

\_\_\_\_\_  
Date

**LIST OF ATTACHMENTS**

Attachment B - Services to be Provided by Engineer

Attachment C - Work Schedule

Attachment D - Fee Schedule

**Supplemental Work Authorization (SWA) No. 2  
To  
Work Authorization (WA) No. 3  
County Road 200  
At SH 29/Lp 332  
Williamson County, TX**

**ATTACHMENT B**

**SERVICES TO BE PROVIDED BY ENGINEER**

**PROJECT DESCRIPTION**

The project involves improvements to County Road (CR) 200 at the SH 29/Lp 332 intersection in Williamson County, TX.

**SCOPE OF SERVICES**

**GENERAL**

The services to be provided by the Engineer under this SWA shall consist of providing additional and extended studies and design to establish and confirm direction and project limits on which to acquire ROW and construct proposed improvements; develop PS&E; and extended project development schedule. SWA services also involve implementation of recently implemented Williamson County design manual and project development guidelines.

**Project Management**

The ENGINEER will provide project management services to facilitate project development. These services will include the following:

- A. Attend five (5) project coordination meeting with Williamson County and TxDOT to assess and coordinate directives;
- B. Team coordination and project status meetings;
- C. Stakeholder meetings, coordination, etc
- D. Perform Quality Assurance and Quality Control (QA/QC) in accordance with approved QA/QC protocols;
- E. Additional Information:
- F. Copies of the QC sets will be available upon Client request;
- G. QA/QC documents are filed in project files.

**Deliverables**

- Meeting minutes from all meetings
- Comments and Response Form for each submittal

**PLANS, SPECIFICATIONS & ESTIMATES (PS&E)**

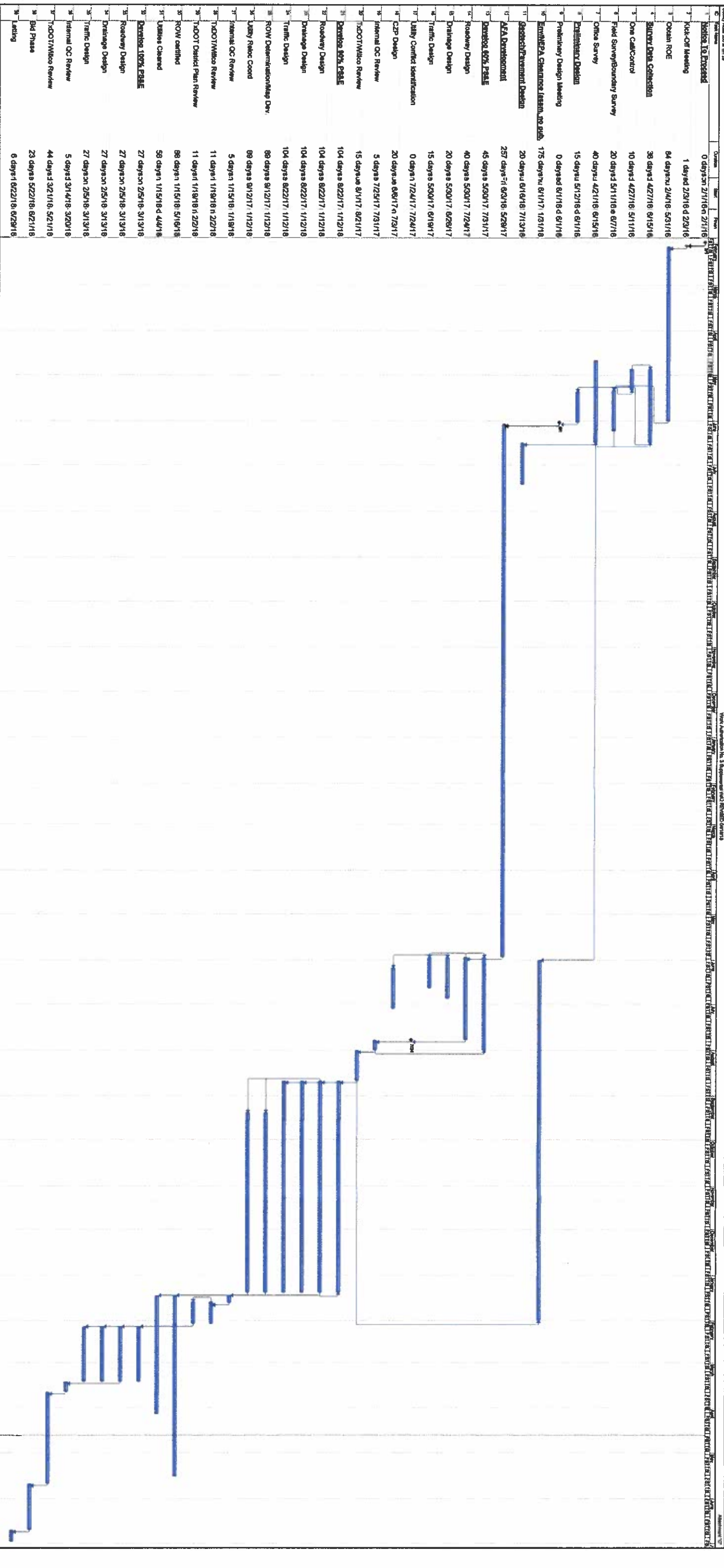
**A. General**

1. Develop PS&E design details in accordance with latest Williamson County policies and preferences. This approach will include specifications, bid codes, general notes, and Standard detail sheets. All plan sheets shall be developed using 11" x 17" sheets sizes and shall be of uniform style and quality.
2. Prepare exhibits and documents to support finalization of PS&E in preparation of project letting
3. Coordinate mitigation of utility conflicts

**B. Roadway**

Supplemental work includes:

1. Revision of PS&E reflecting revised work limits on SH 29, Lp 332 and in CMTA ROW.
2. Updating cross sections to reflect revised limits.
3. Revise PS&E to introduce and include joint bid Water and Waste Water adjustment plans
4. Design and revision to PS&E reflecting radar based traffic data detection in place of VIVIDS System
5. Development of PS&E reflecting use of flashing arrow approach to signals in place of green ball/green arrow approach
6. Development of PS&E to add pedestrian signal, signing and marking on west side of intersection
7. Updating project schedule.



<i>O'Brien Engineering Services</i>	
<b>TEAM MEMBER</b>	<b>WA No. 3</b>
O'Brien Engineering Services, LLC	\$ 12,055.52
Rogers Design Services, PLLC	\$ 21,930.00
<b>TOTAL</b>	<b>\$ 33,985.52</b>

COUNTY: WILLIAMSON  
 HIGHWAY: COUNTY ROAD 200  
 LIMITS: AT SH 29/Lp 332

**ATTACHMENT D  
 Fee Schedule**

Work Authorization No. 3  
 Supplemental WA No. 2

**O'Brien Engineering Services**

Task	U Rate	Project Manager	Senior Engineer	Project Engineer	Design Engineer	Sr Engr Tech	Admin/ Clerical	Total Hours each	Total Labor \$
		\$175.00	\$155.00	\$120.00		\$99.30	\$56.28		
<b>1) PROJECT MANAGEMENT</b>									
PROJECT ADMIN & CONTROL		4					4	8	\$925.12
PROJECT MEETINGS (EST AT 5)		4					4	8	\$925.12
PROJECT TEAM COORDINATION, ETC		6					6	12	\$1,387.68
		<b>Subtotal</b>	<b>14</b>				<b>14</b>	<b>28</b>	<b>\$3,237.92</b>
<b>2) DESIGN</b>									
PS&E FINALIZATION			12	16		24		52	\$6,163.20
PROJECT EXHIBITS			4			6		10	\$1,215.80
UTILITY COORDINATION & JOINT BID PLANS			8			2		10	\$1,438.60
		<b>Subtotal</b>	<b>24</b>	<b>16</b>		<b>32</b>		<b>72</b>	<b>\$8,817.60</b>
<b>LABOR TOTAL</b>									<b>\$12,055.52</b>
<b>EXPENSES</b>									
<b>TOTAL</b>									<b>\$12,055.52</b>

ATTACHMENT D		CR 200		DATE: 10-Apr-18	
WA #3 S4#2		AT SH 29			
WSB & Associates				Sheet 1/2	
PROJECT: Preparation of PS&E				TOTAL	
TASK AND DESCRIPTION		SENIOR	SENIOR	CADD	
		ENGINEER	TECH	TECH	
		\$155.00	\$120.00	\$50.00	
HOURLY RATE					
TOTAL HOURS		36	32	0	68
TOTALS		\$5,590	\$3,840	\$0	\$9,420
B. REVISE TRAFFIC DETECTION DESIGN DETAILS.					
TOTAL HOURS		30	30	0	60
TOTALS		\$4,650	\$3,600	\$0	\$8,250
C. REVISE SH 29 PROJECT LIMITS					
TOTAL HOURS		12	20	0	32
TOTALS		\$1,960	\$2,400	\$0	\$4,260
TOTAL PROJECT LABOR		78	82	0	160
TOTAL PROJECT COST		\$12,080	\$9,840	\$0	\$21,930

ATTACHMENT D	CR 200	Williamson County	DATE:	TOTAL HOURS			
WA RS 3AM2	AL SH 23	10-Apr-18	Sheet 2/2				
WB&B Associates							
PROJECT: Preparation of PS&E							
TASK AND DESCRIPTION	No. Sheets	Hours /Sheet	SENIOR ENGINEER	Hours /Sheet	SENIOR TECH HOURS	CADD TECH HOURS	TOTAL HOURS
<b>A. REVISE APPROACH TO SIGNAL HEADS FOR LEFT TURNS</b>	4	6	24	6	24	0	48
1. Update proposed signal layout, signal elevation, wiring and phasing, and lead switch sheet (4 sheets)			6	6	6	0	12
2. Develop updated quantities			6	6	2	0	8
3. Develop updated traffic signal summary							0
<b>SUBTOTAL</b>			36		32	0	68
<b>B. REVISE TRAFFIC DETECTION DESIGN DETAILS.</b>							
1. Update proposed signal layout, signal elevations, and wiring and phasing			18		18		32
2. Develop RAMP Detection Plan sheet			6		6		12
3. Review quantities, general notes, and specs as needed for traffic signal revisions			6		6		12
<b>SUBTOTAL</b>			30		30	0	60
<b>C. REVISE LOOP 332 AND SH 24 PROJECT LIMIT DETAILS.</b>							
1. Review project limits, update plan sheets and trace			12		20		32
<b>SUBTOTAL</b>			12		20		32
<b>PROJECT TOTALS</b>			78		82	0	160