

WILLIAMSON COUNTY COMPREHENSIVE PARKS MASTER PLAN UPDATE

JUNE 26, 2018



PLAN PURPOSE

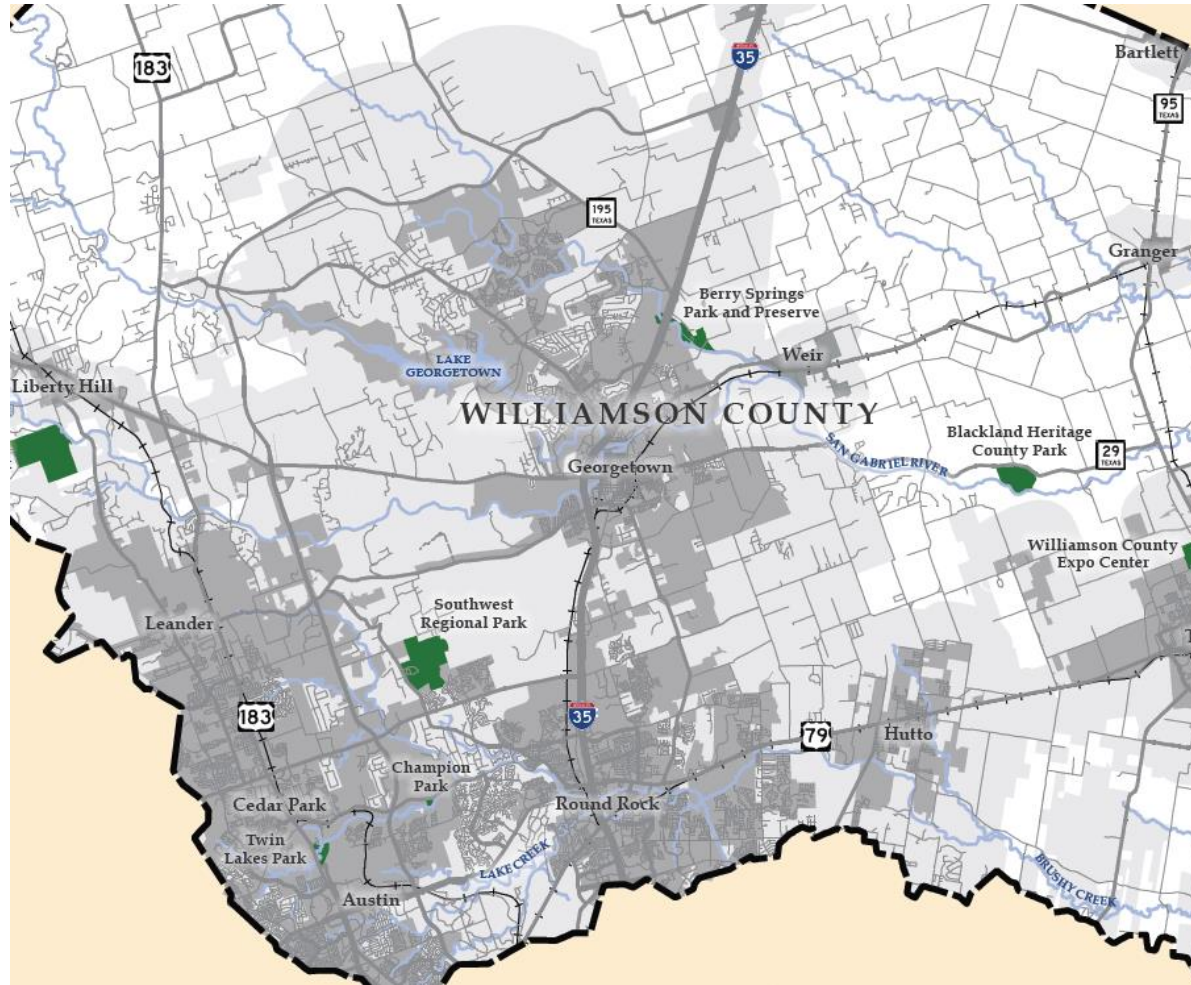
Update the 10-year master plan blueprint for the County's parks and trails system.

CONSULTANT TEAM

Halff Associates, Inc.
Jim Rodgers

Randy Bell and Parks Staff

EXISTING PARKS



TRAILS

Brushy Creek

Lake Creek

PARKS

Berry Springs

Champion

Expo Center

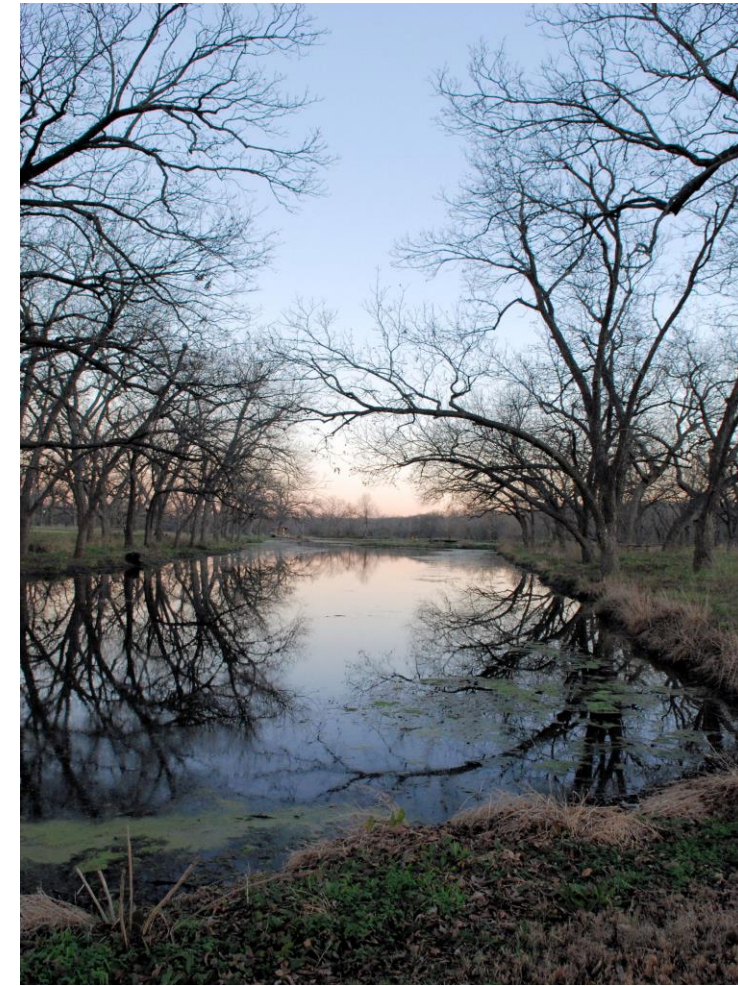
Southwest Regional

Twin Lakes

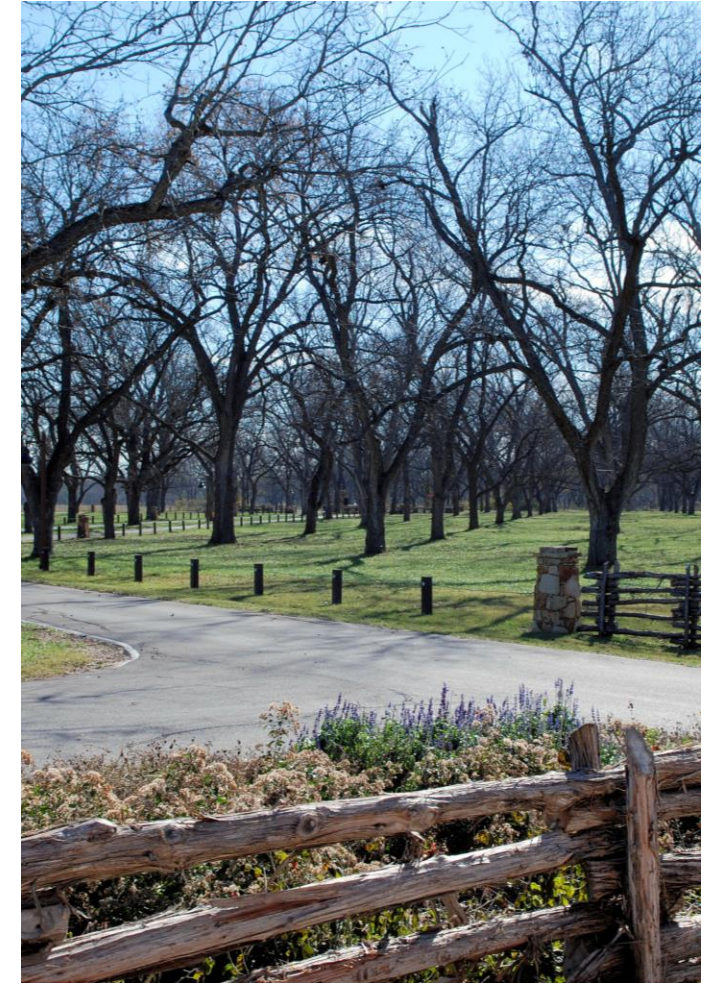
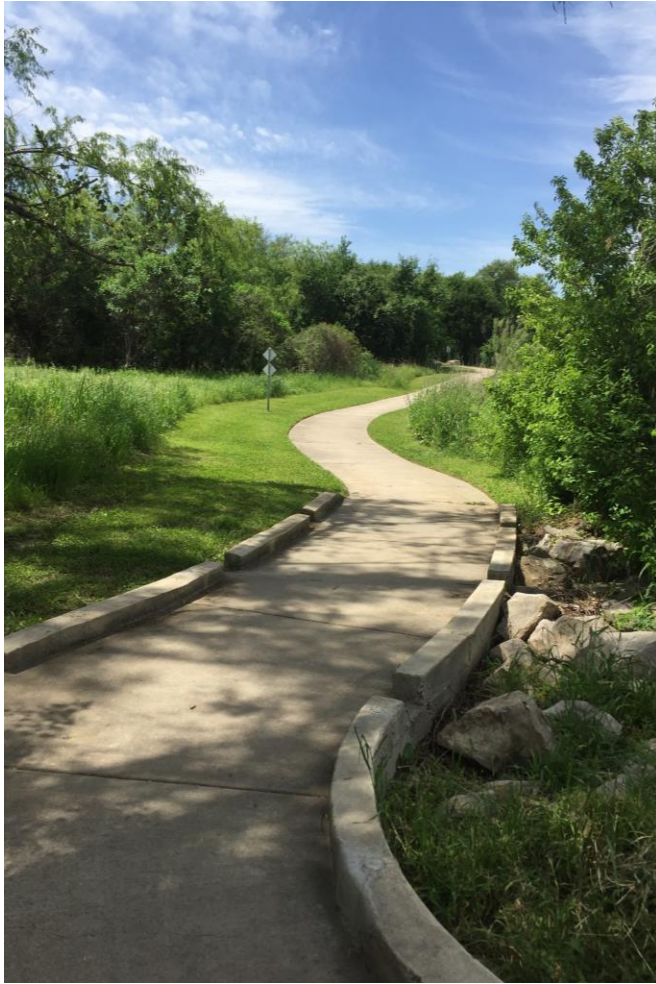
FUTURE

River Ranch

Blackland Heritage



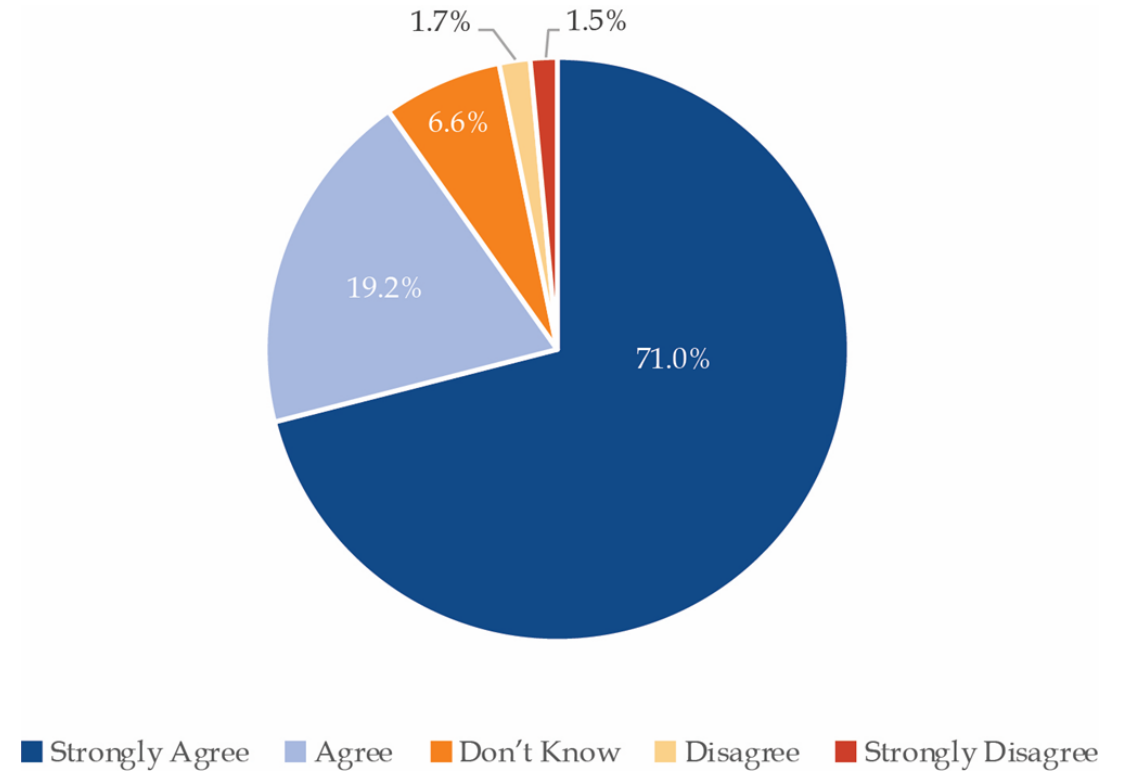
EXISTING PARKS



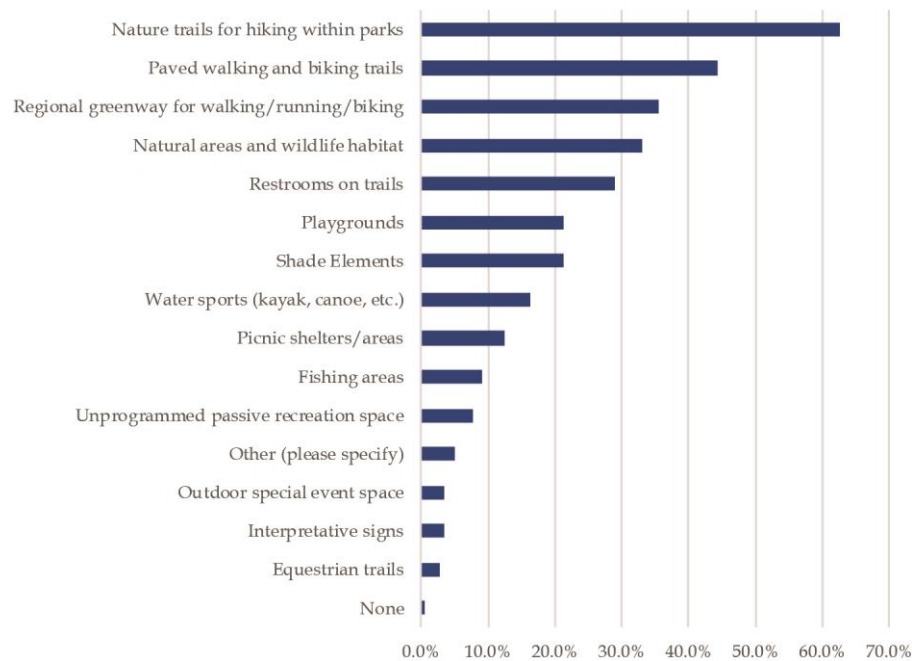
SHOULD THE COUNTY EXPAND THE TRAIL SYSTEM?

Over 90% agreed or strongly agreed that the trail system should be expanded.

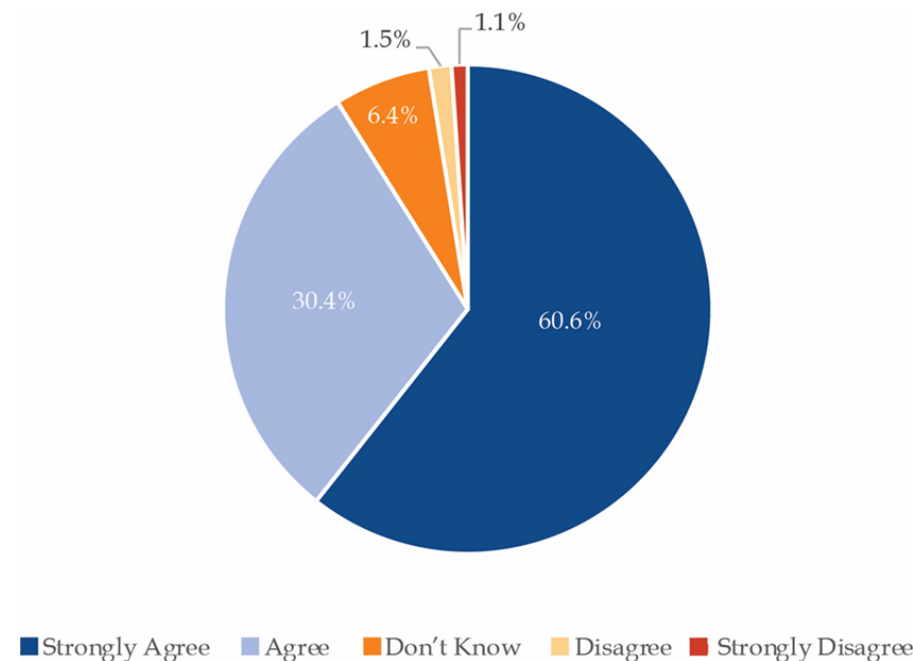
Trails, particularly Nature Trails and paved Regional Trails, were some of the highest rated items desired by the public in the survey



MOST IMPORTANT AMENITIES



SUPPORT FOR PASSIVE RECREATION





PLAN FOCUS AREAS

1. Regional Trail Plan
2. Parks System Expansion
3. Parkland Improvements
4. Operations and Maintenance

IMPLEMENTATION | GOALS AND ACTIONS

RTP	Facilitate and coordinate a county-wide regional trail plan.
RTP-2	Establish a consistent set of standards to ensure effective implementation of the regional trail plan.
RTP-3	Establish a funding strategy for the construction and maintenance of the regional trail system.
RTP-4	Update the Williamson County Trails Master Plan.
PSE-1	Evaluate opportunities for land acquisition.
PSE-2	Emphasize education and conservation as primary themes in new parks.
PI-1	Efficiently develop and enhance park facilities and amenities.
PI-2	Seek financial partnerships through shared-use facilities and sponsorships.
OM-1	Ensure consistent, quality maintenance of park system facilities.
OM-2	Identify the operational and resource needs necessary to implement this Parks Master Plan.

RECOMMENDED ACTIONS

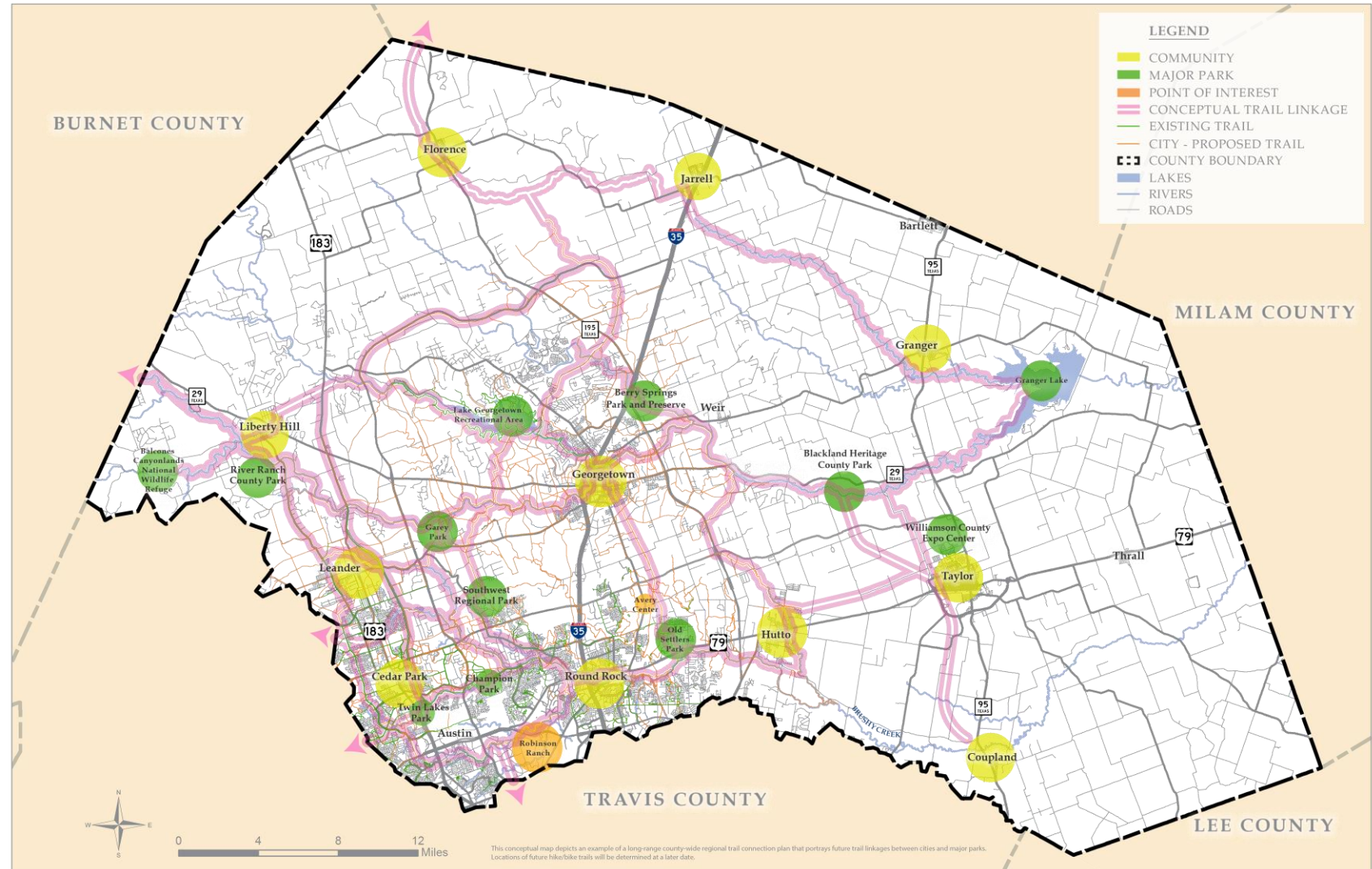
The plan includes a series of recommended actions for each goal statement. These recommendations should be used as a guide for implementation over the next 10 years.



IMPLEMENTATION | REGIONAL TRAIL EXAMPLE

GOAL 1: REGIONAL TRAIL

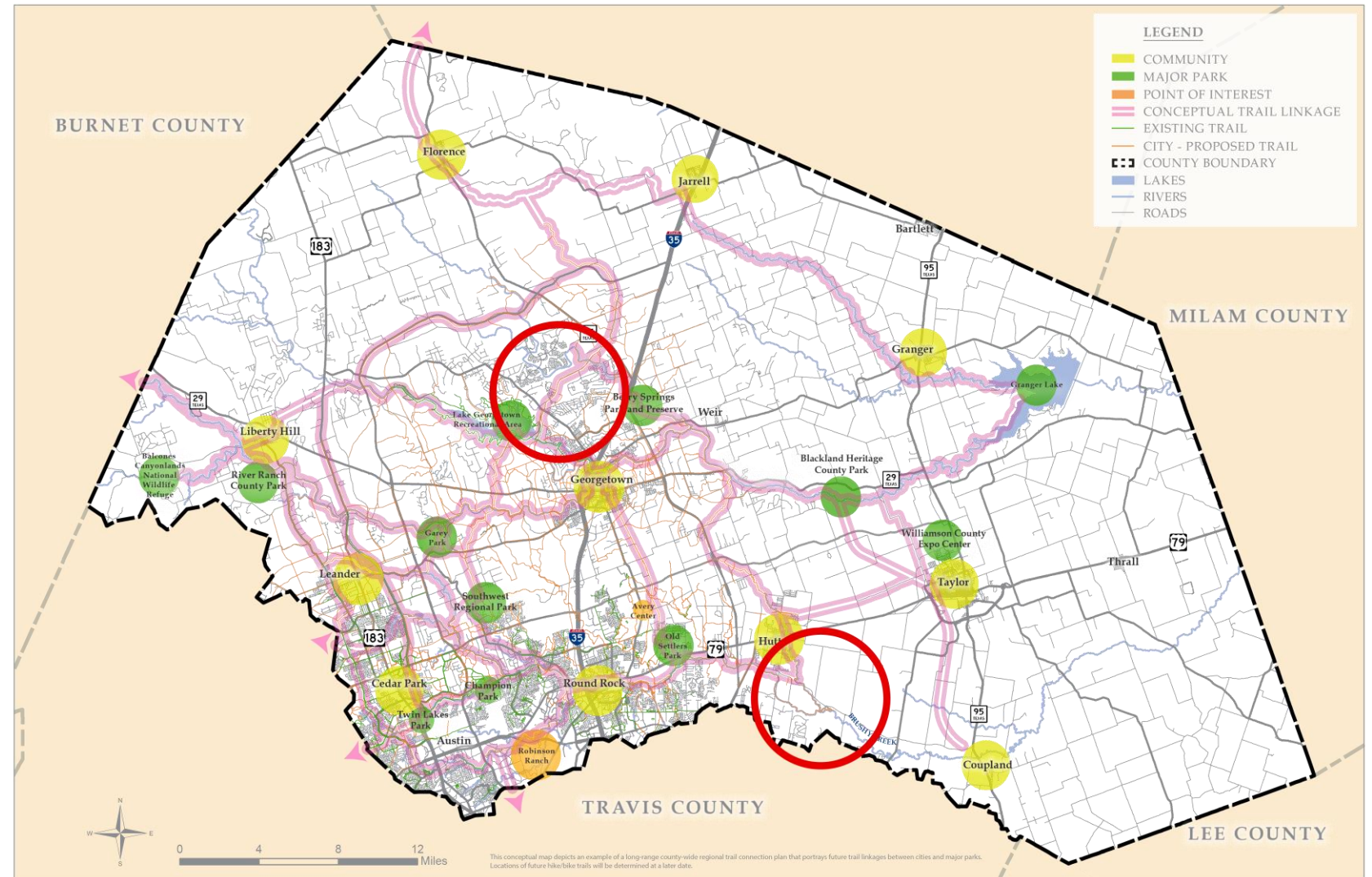
- Conceptual regional trail plan connecting cities and points of interests (parks, etc.)
- Depicts linkages created from city future trail plans
- Goal is to build partnerships, promote regional planning
- County could function as facilitator, not manager



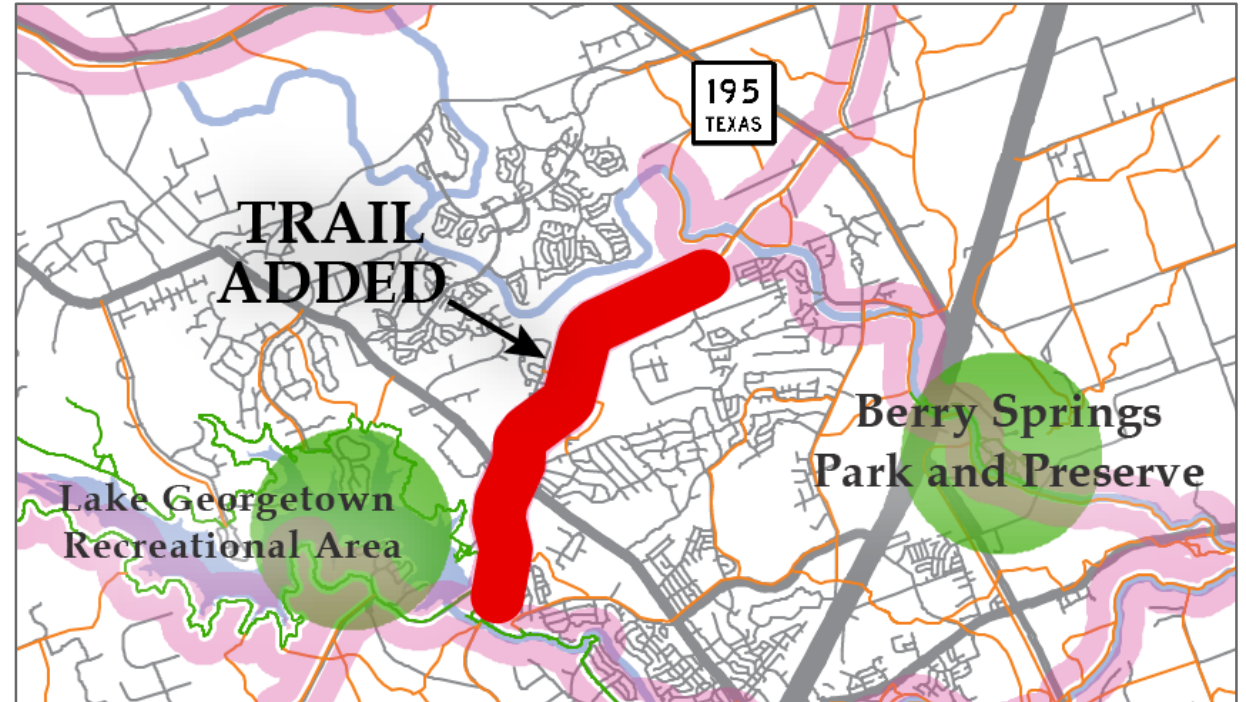
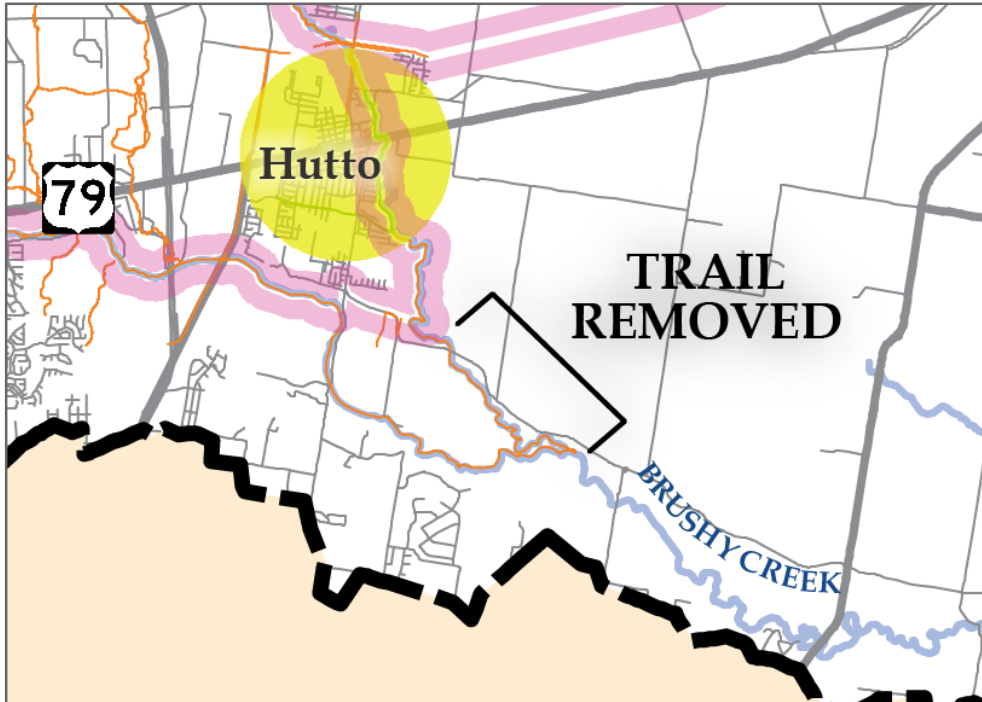
REGIONAL TRAIL COMMENTS

COMMENTS SINCE THE JUNE PUBLIC HEARING

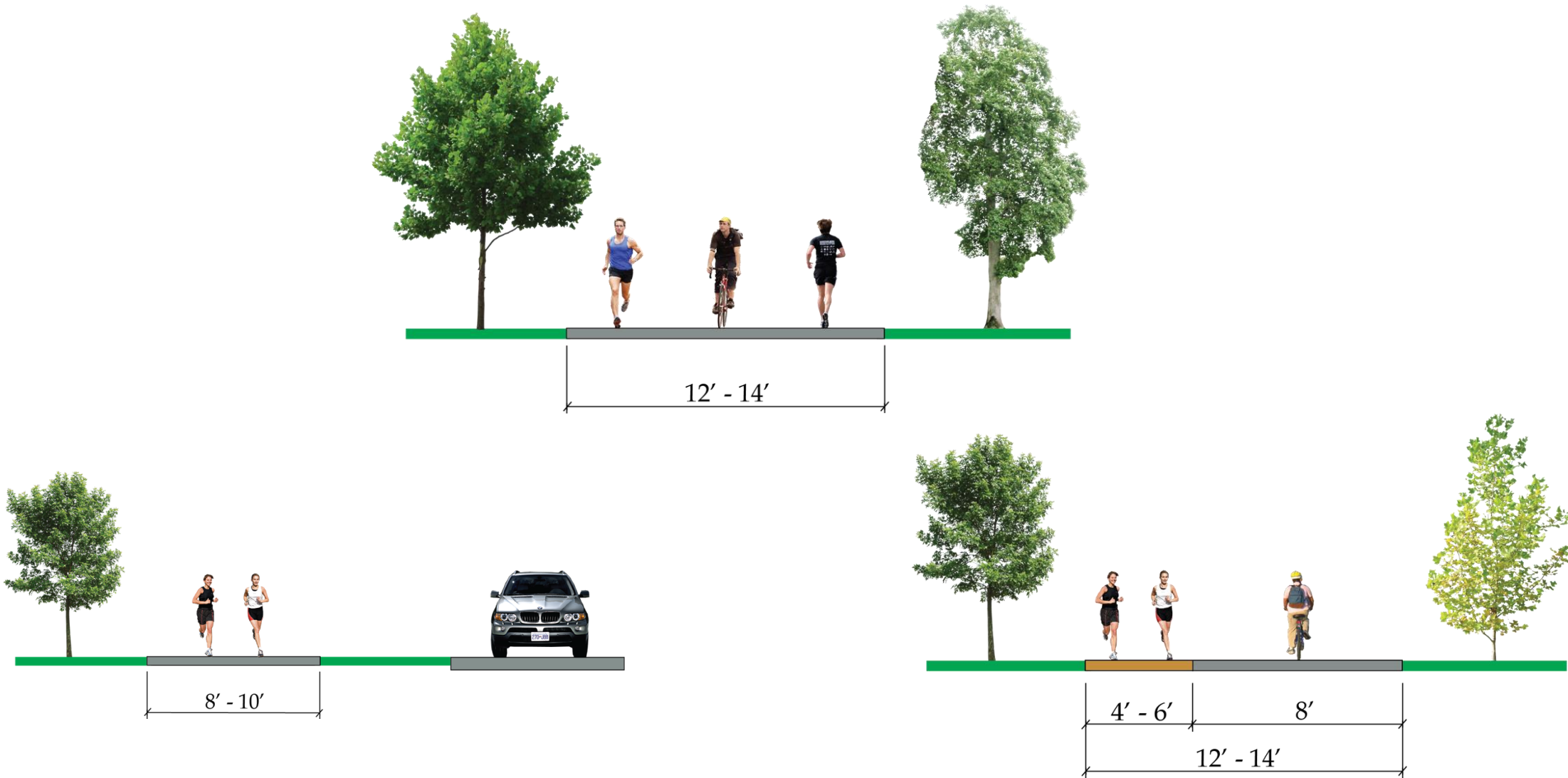
- Remove future segment of Brushy Creek Trail near Norman's Crossing
- Add connection from Lake Georgetown to future Westside Park along Shell Road



REGIONAL TRAIL PROPOSED CHANGES



IMPLEMENTATION | TRAIL DESIGN



10-YEAR PRIORITY PLAN



FUNDING STRATEGY

- Allocate resources for operations and maintenance
- Consider future bond election for capital improvements and land acquisition
- Pool resources with cities for trails, and trail construction with development
- Seek grants and matching funds
- Consider revenue-generating facilities for special use and events

QUESTIONS?

