

Williamson County

Transition Committee Update



Transition Committee Goal



Goal: Continuously improve Williamson County's employee (on/off)–boarding processes.

Solution: Combination of Laserfiche and ServiceNow platforms offer an on/off–boarding management system to ensure availability, standardization and consistency during the employment lifecycle.

3 Phases

Phases:

Phase	Desc.	Date
1	Centralized employee assets management	9/30/2018
2	Transparent on/off-boarding	11/01/18
3	Departmental on/off-boarding tasks and employee assets management	Continuous

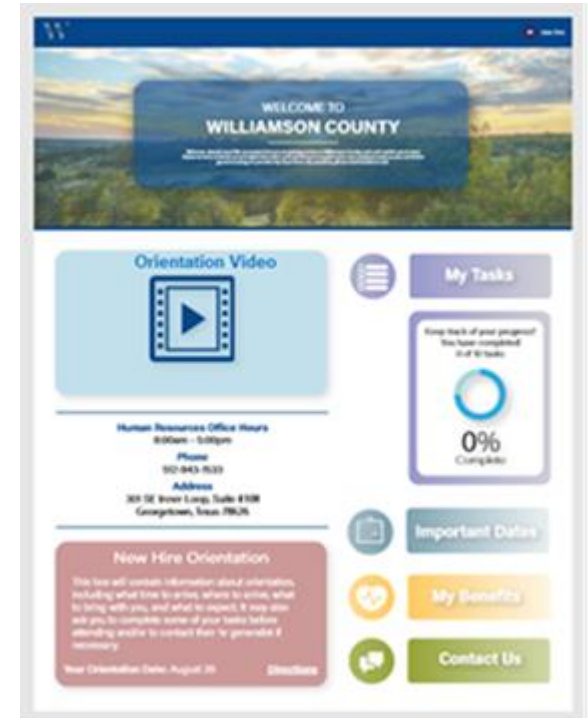
Phase 1 – Employee Assets



- Allows pre-employment and asset requests
- Tracks assets provided to non-employees (volunteers, outside agencies)
- Documents departments' and employees' accountability for assigned county assets

Phase 2: On/Off-boarding

- Transparent view to an employee's progress through the on-boarding process.
- Home and mobile device access to new hire portal.
- Provides, creates and routes all new-hire documents to internal HR employee files.
- Electronic signatures
- Real-time on-boarding status



Phase 3: Continuous Enhancements

- Asset bundles based on roles
- Departmental specific on-boarding tasks
- Unique assets per job functions (Tools, Camera)
- Detailed breakdown of access to modules within a software application
- Departmental work order systems

Questions

