

WILLIAMSON COUNTY, TEXAS

CHANGE ORDER NUMBER: 1

1. CONTRACTOR: QA Construction Services, Inc.
2. Change Order Work Limits: Sta. 100+30.00 to Sta. 311+63.33
3. Type of Change(on federal-aid non-exempt projects): Minor (Major/Minor)
4. Reasons: 2E, 2C (3 Max. - In order of importance - Primary first)

Project:	<u>Ronald Reagan at Silver Spur & Sun City</u>
Roadway:	<u>Safety Improvements</u>
Project Number:	<u>T1873</u>

5. Describe the work being revised:

2E: Differing Site Conditions(unforeseeable). Miscellaneous difference in site conditions (unforeseeable). This Change Order provides the final balancing for the overrun/underrun of Contract quantities on the project as a result of addressing field conditions not accounted for in the original plans. **2C: Differing Site Conditions. New Development (conditions changing after PSE).** This Change Order adds new items to the contract to pay the Contractor for additional work. The added work includes, removing and replacing an existing flashing beacon assembly, milling and overlaying Silver Spur to maintain the existing profile and placing block sod in the center median of Silver Spur.

6. Work to be performed in accordance with Items: See attached.
7. New or revised plan sheet(s) are attached and numbered: N/A
8. New Special Provisions/Specifications to the contract are attached: ☐ Yes ☒ No
9. New Special Provisions to Item N/A No. N/A, Special Specification Item N/A are attached.

Each signatory hereby warrants that each has the authority to execute this Change Order (CO).

<p>The contractor must sign the Change Order and, by doing so, agrees to waive any and all claims for additional compensation due to any and all other expenses; additional changes for time, overhead and profit; or loss of compensation as a result of this change.</p> <p>THE CONTRACTOR Date <u>11-01-2021</u></p> <p>By <u>Major Davenport</u> <small>Digitally signed by Major Davenport DN: cn=Major Davenport, o.ou, email=major@terra-path.com, c=US Date: 2021.11.01 13:14:33 -05'00'</small></p> <p>Typed/Printed Name <u>Major Davenport</u></p> <p>Typed/Printed Title <u>Project Manager</u></p>	<p>The following information must be provided</p> <p>Time Ext. #: <u>1</u> Days added on this CO: <u>44</u></p> <p>Amount added by this change order: <u>(\$29,746.06)</u></p>
---	---


RECOMMENDED FOR EXECUTION:



Project Manager Date 11/1/2021

N/A

Design Engineer Date



Program Manager Date 11/2/2021

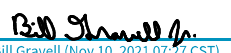
County Commissioner Precinct 1 Date
☐ APPROVED ☐ REQUEST APPROVAL

County Commissioner Precinct 2 Date
☐ APPROVED ☐ REQUEST APPROVAL

County Commissioner Precinct 3 Date
☐ APPROVED ☐ REQUEST APPROVAL

County Commissioner Precinct 4 Date
☐ APPROVED ☐ REQUEST APPROVAL

Design Engineer's Seal:


Bill Gravell (Nov 10, 2021 07:27 CST) Nov 10, 2021

County Judge Date
☐ APPROVED

CHANGE ORDER REASON(S) CODE CHART

1. Design Error or Omission	1A. Incorrect PS&E 1B. Other
2. Differing Site Conditions (unforeseeable)	2A. Dispute resolution (expense caused by conditions and/or resulting delay) 2B. Unavailable material 2C. New development (conditions changing after PS&E completed) 2D. Environmental remediation 2E. Miscellaneous difference in site conditions (unforeseeable)(Item 9) 2F. Site conditions altered by an act of nature 2G. Unadjusted utility (unforeseeable) 2H. Unacquired Right-of-Way (unforeseeable) 2I. Additional safety needs (unforeseeable) 2J. Other
3. County Convenience	3A. Dispute resolution (not resulting from error in plans or differing site conditions) 3B. Public relations improvement 3C. Implementation of a Value Engineering finding 3D. Achievement of an early project completion 3E. Reduction of future maintenance 3F. Additional work desired by the County 3G. Compliance requirements of new laws and/or policies 3H. Cost savings opportunity discovered during construction 3I. Implementation of improved technology or better process 3J. Price adjustment on finished work (price reduced in exchange for acceptance) 3K. Addition of stock account or material supplied by state provision 3L. Revising safety work/measures desired by the County 3M. Other
4. Third Party Accommodation	4A. Failure of a third party to meet commitment 4B. Third party requested work 4C. Compliance requirements of new laws and/or policies (impacting third party) 4D. Other
5. Contractor Convenience	5A. Contractor exercises option to change the traffic control plan 5B. Contractor requested change in the sequence and/or method of work 5C. Payment for Partnering workshop 5D. Additional safety work/measures desired by the contractor 5E. Other
6. Untimely ROW/Utilities	6A. Right-of-Way not clear (third party responsibility for ROW) 6B. Right-of-Way not clear (County responsibility for ROW) 6C. Utilities not clear 6D. Other

Williamson County Road Bond Program

Ronald Reagan at Silver Spur and Sun City Williamson County Project No. T1873

Change Order No. 1 Reason for Change

This Change Order provides the final balancing for the overrun/underrun of Contract quantities on the project as a result of addressing field conditions not accounted for in the original plans. This Change Order also adds new items to the contract to pay the Contractor for additional work. The added work includes:

999-WC02 Remove and Replace an Existing Flashing Beacon Assembly. The existing flashing beacon was located within the limits of the roadway widening. It was relocated to a location outside the limits of construction.

999-WC03 Milling and Hot Mix for profile revision at Silver Spur. The existing profile of Silver Spur did not match the profile shown in the plans. The proposed profile was modified to match the existing profile and minimize work in the intersection. The modification took place on the departure side of the entrance and the roadway had to be closed to allow the Contractor a safe work zone to complete the work.

999-WC04 Place Block Sod in Center Median of Silver Spur. Trenching for the power service to the new illumination pole and modifications to match the existing profile of Silver Spur disturbed the vegetation in the center median. The existing vegetation was buffalo grass. The median area was re graded and buffalo block sod was replaced.

The following new items are required for this change order:

ITEM	DESCRIPTION	QTY	UNIT
999-WC02	REMOVE AND RELOCATE EXISTING FLASHING BEACON ASSEMBLY	1.00	LS
999-WC03	MILLING AND HOT MIX FOR PROFILE REVISION AT SILVER SPUR	1.00	LS
999-WC04	BLOCK SOD IN CENTER MEDIAN OF SILVER SPUR	1.00	LS

This Change Order results in a net decrease of \$29,746.06 to the Contract amount, for an adjusted Contract total of \$845,603.94. The original Contract amount was \$875,350.00. As a result of this and all Change Orders to-date, \$29,746.06 has been deducted from the Contract, resulting in an 3.40% net decrease in the overall Contract cost. As a result of this Change Order, forty four (44) days will be added to the contract for a total duration of 172 days.

HNTB Corporation

Oscar Salazar-Bueno, P.E.



QA Construction Services Inc.
5811 Blue Bluff Road
Austin, TX 78724
Phone: 512-637-6120

7/29/2021

Change Order #1

ITEM 999-WC02

Project: Ronald Reagan Intersection
Owner: Williamson County

Additional Work - Remove & Relocate Existing Solar Flash Beacon

BID ITEM #	DESCRIPTION	UNIT	Qty	UNIT PRICE	TOTAL PRICE
1	N/A	Day	1	\$ 1,035.00	\$ 1,035.00
	Excavator	Day	1	\$ 575.00	\$ 575.00
	Mini Excavator	Day	1	\$ 845.00	\$ 845.00
	Wheel Loader	Day	1	\$ 820.00	\$ 820.00
	Hammer Breaker	HR	4	\$ 42.00	\$ 168.00
	Labor - Superintendent (Ryan Helm)	HR	6	\$ 36.00	\$ 216.00
	Labor - Foreman (Christian Figueroa)	HR	8	\$ 28.00	\$ 224.00
	Labor - Operator 1 (Reinaldo Figueroa)	HR	3	\$ 28.00	\$ 84.00
	Labor - Operator 2 (Erick EstradaReinaldo Figueroa)	HR	8	\$ 25.00	\$ 200.00
	Labor - General Labor 1 (Miguel Echevarria)	HR	8	\$ 25.00	\$ 200.00
	Labor - General Labor 2 (Adan)	HR	8	\$ 25.00	\$ 200.00
	Labor - General Labor 3 (Alfredo)	HR	8	\$ 25.00	\$ 200.00
Total Cost (Material & Labor)					
				Cost	Overhead
Total Material Cost				\$ -	0%
Equipment				\$ 3,275.00	15%
Labor				\$ 1,292.00	55%/15%
				Overhead Cost	
				\$ 6,069.24	
Subtotal				\$ 6,069.24	
Mark-up				15%	
Insurance & Bond Adjustments				2%	\$ 121.39
				Total Cost	\$ 6,190.63

Breakdown:

1 - Additional Work - Remove & Relocate Existing Solar Flash Beacon

\$ 6,190.63

Total Cost for Change Order No.1 \$ 6,190.63

By Contractor:

Jose Ruiz, Estimator/ Project Manager - QA Construction Services Inc.

7/29/2021
Date

Approved by:

Construction Observer: Clayton Weber, HNTB

Date

Program Manager: Michael Weaver, Prime Strategies

Date

Senior Director of Infrastructure: Robert B. Daigh, Williamson County

Date

LABOR \$ 1292.00
x 1.55 = 2002.60
x 1.15 = 2302.99
EQUIPMENT \$ 3275.00
x 1.15 3766.25

\$ 2302.99
\$ 3766.25
6069.24
x 1.02 \$ 6190.63

Cat Class: 054-0500

50-59K Hydraulic Excavator

- Maximum digging depths of up to 25 feet
- Peak reach of 33 feet
- Maximum lift capacity of 55,736 lbs.
- Wide selection of general-purpose buckets available

Online Rate:

1 Day. **\$1,035 USD** 1 Week. **\$2,555 USD** 4 Weeks. **\$5,430 USD**





Cat Class: 035-0157

13,000lb Mini Excavator Cab

- Fully enclosed cab
- Peak digging force of 4,766 lbs
- Maximum digging depth of nearly 8 1/2 feet with nearly 14 feet of reach
- Backfill blade for leveling and stabilizing
- Rubber tracks reduce damage to hard surfaces

Online Rate:

1 Day: \$575 USD 1 Week: \$1,585 USD 4 Weeks: \$4,770 USD

Cat Class: 057-0006

2-3/4 - 3 Yd Artic Loader



- Up to 40° frame articulation
- 4-wheel drive
- Up to 2-3/4 cubic yard bucket
- Max Dump Height: 8' 11" in.
- Max Weight 23,900 lbs.

Online Rate:

1 Day: **\$845 USD** 1 Week: **\$2,245 USD** 4 Weeks: **\$4,365 USD**



Cat Class: 005-0750

Hydraulic Hammer - 45K - 50K Excavator

The 45K - 50K demolition breaker is designed to be mounted on an excavator using the carrier's hydraulic system for power and are effective for breaking up rock, concrete or other materials.

- Hydraulic demolition breaker
- Mount on 45K - 50K excavator
- Effective for breaking up rock, concrete and other materials

Online Rate:

- 1 Day: **\$820 USD**
- 1 Week: **\$2,430 USD**
- 4 Weeks: **\$6,825 USD**

The displayed rates do not include the taxes or optional charges that may be selected later in the checkout process.

1

ADD



QA Construction Services Inc.
5811 Blue Bluff Road
Austin, TX 78724
Phone: 512-637-6120

7/29/2021

Change Order #2

ITEM 999-WCO 3

Project: Ronald Reagan Intersection
Owner: Williamson County

Additional Work - Milling & Traffic Control at Silver Spur & Ronald Reagan Intersection

1 -

BID ITEM #	DESCRIPTION	UNIT	Qty	UNIT PRICE	TOTAL PRICE
Force Account	PLANE ASPH CONC PAV (10")	SY	89	\$ 42.04	\$ 3,741.56
	Labor - Superintendent (Ryan Helm)	HR	10	\$ 42.00	\$ 420.00
	Labor - Foreman (Christian Figueroa)	HR	10	\$ 36.00	\$ 360.00
	Labor - General Labor 1 (Miguel Echevarria)	HR	10	\$ 25.00	\$ 250.00
	Labor - General Labor 3 (Alfredo)	HR	10	\$ 25.00	\$ 250.00
	Labor - General Labor (Omar)	HR	10	\$ 25.00	\$ 250.00
	Labor - General Labor (Eugenio)	HR	8.5	\$ 30.00	\$ 255.00
	Surveyor-Joe	HR	8.5	\$ 30.00	\$ 255.00
	Surveyor-Hugo	HR	4	\$ 156.31	\$ 625.24
	Blade	HR	8	\$ 48.43	\$ 387.44
	Skidster	HR	4	\$ 55.38	\$ 221.52
	Roller	DAY	1	\$ 845.00	\$ 845.00
	Loader	LS	1	\$ 120.00	\$ 120.00
	Light Tower-5/4	LS	1	\$ 1,050.00	\$ 1,050.00
	Traffic Control-5/4	WK	2	\$ 200.00	\$ 400.00
	Arrow Board (Weekly)	WK	2	\$ 394.00	\$ 788.00
	Barricades Sign & Traffic Handling				
Total Cost (Material & Labor)					
Cost Overhead					
Total Material Cost	\$	3,741.56	0%	\$	-
Equipment	\$	4,437.20	15%	\$	9,045.57
Labor	\$	2,290.00	55%/15%	\$	4,081.93
Overhead Cost				\$	13,127.50
Subtotal				\$	13,127.50
Mark-up				15%	
Insurance & Bond Adjustments				2%	\$ 262.55
Total Cost				\$	13,390.05

Breakdown:
1 - Milling & Traffic Control at Silver Spur & Ronald Reagan Intersection \$ 13,390.05

Total Cost for Change Order No.1 \$ 13,390.05

By Contractor:

Major Davenport Project Manager - QA Construction Services Inc.

7/29/2021
Date

Approved by:

Construction Observer: Clayton Weber, HNTB

Date

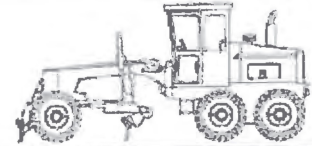
Program Manager: Michael Weaver, Prime Strategies

Date

Senior Director of Infrastructure: Robert B. Dalgh, Williamson County

Date

Rental Rate Blue Book®
Caterpillar 14M (disc. 2015)
Articulated Frame Graders

Size Class:
250 HP & Over
Weight:
46796 lbs

Configuration for 14M (disc. 2015)

Moldboard Size **14.0 ft** Operator Protection **EROPS**
Power Mode **Diesel**
Blue Book Rates

** FHWA Rate is equal to the monthly ownership cost divided by 176 plus the hourly estimated operating cost.

	Ownership Costs				Estimated Operating Costs	FHWA Rate**
	Monthly	Weekly	Daily	Hourly	Hourly	Hourly
Published Rates	USD \$16,390.00	USD \$4,590.00	USD \$1,150.00	USD \$175.00	USD \$75.30	USD \$168.43
Adjustments						
Region (Texas: 92.7%)	(USD \$1,196.47)	(USD \$335.07)	(USD \$83.95)	(USD \$12.77)		
Model Year (2008: 94.07%)	(USD \$900.92)	(USD \$252.30)	(USD \$63.21)	(USD \$9.62)		
Adjusted Hourly Ownership Cost (100%)	-	-	-	-		
Hourly Operating Cost (100%)					USD \$75.30	
Total:	USD \$14,292.61	USD \$4,002.63	USD \$1,002.84	USD \$152.61	USD \$75.30	USD \$156.51

Non-Active Use Rates

Standby Rate	Hourly	USD \$40.60
Idling Rate		USD \$108.31

Rate Element Allocation

Element	Percentage	Value
Depreciation (ownership)	34%	USD \$5,572.60/mo
Overhaul (ownership)	51%	USD \$8,358.90/mo
CFC (ownership)	3%	USD \$491.70/mo
Indirect (ownership)	12%	USD \$1,966.80/mo
Fuel (operating) @ USD 3.27	36%	USD \$27.10/hr

Revised Date: 3rd quarter 2021

These are the most accurate rates for the selected Revision Date(s). However, due to more frequent online updates, these rates may not match Rental Rate Blue Book Print. Visit the Cost Recovery Product Guide on our Help page for more information.

The equipment represented in this report has been exclusively prepared for CLAYTON WEBER
(cweber@hntb.com)

Rental Rate Blue Book®
Caterpillar 262D
Skid Steer Loaders

Size Class:
2501 - 2900 lbs
Weight:
N/A

Configuration for 262D

Hydraulic Tank Capacity	10.3 gal	Operator Protection	ROPS
Power Mode	Diesel		

Blue Book Rates

** FHWA Rate is equal to the monthly ownership cost divided by 176 plus the hourly estimated operating cost.

	Ownership Costs				Estimated Operating Costs	FHWA Rate**
	Monthly	Weekly	Daily	Hourly	Hourly	Hourly
Published Rates	USD \$5,095.00	USD \$1,425.00	USD \$355.00	USD \$53.00	USD \$22.46	USD \$51.41
Adjustments						
Region (Texas: 89.7%)	(USD \$524.78)	(USD \$146.77)	(USD \$36.56)	(USD \$5.46)		
Model Year (2018: 99.9%)	(USD \$4.57)	(USD \$1.28)	(USD \$0.32)	(USD \$0.05)		
Adjusted Hourly Ownership Cost (100%)	-	-	-	-		
Hourly Operating Cost (100%)					-	
Total:	USD \$4,565.65	USD \$1,276.95	USD \$318.12	USD \$47.49	USD \$22.46	USD \$48.40

Non-Active Use Rates

Standby Rate	Hourly	USD \$12.97
Idling Rate		USD \$34.86

Rate Element Allocation

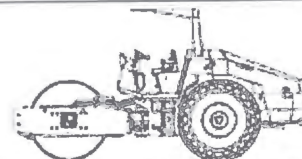
Element	Percentage	Value
Depreciation (ownership)	24%	USD \$1,222.80/mo
Overhaul (ownership)	66%	USD \$3,362.70/mo
CFC (ownership)	2%	USD \$101.90/mo
Indirect (ownership)	8%	USD \$407.60/mo
Fuel (operating) @ USD 3.27	40%	USD \$8.92/hr

Revised Date: 3rd quarter 2021

These are the most accurate rates for the selected Revision Date(s). However, due to more frequent online updates, these rates may not match Rental Rate Blue Book Print. Visit the Cost Recovery Product Guide on our Help page for more information.

The equipment represented in this report has been exclusively prepared for **CLAYTON WEBER**
(cweber@hntb.com)

Rental Rate Blue Book®
Hamm 3410 (disc. 2013)
Single Drum Vibratory Compactors

Size Class:
8.0 - 11.9 MTons
Weight:
22730 lbs

Configuration for 3410 (disc. 2013)

Drum Type	Smooth	Drum Width	84.0 in
Power Mode	Diesel		

Blue Book Rates

** FHWA Rate is equal to the monthly ownership cost divided by 176 plus the hourly estimated operating cost.

	Ownership Costs				Estimated Operating Costs	FHWA Rate**
	Monthly	Weekly	Daily	Hourly	Hourly	Hourly
Published Rates	USD \$3,885.00	USD \$1,090.00	USD \$275.00	USD \$41.00	USD \$35.24	USD \$57.31
Adjustments						
Region (Texas: 96.4%)	(USD \$139.86)	(USD \$39.24)	(USD \$9.90)	(USD \$1.48)		
Model Year (2008: 94.67%)	(USD \$199.69)	(USD \$56.03)	(USD \$14.13)	(USD \$2.11)		
Adjusted Hourly Ownership Cost (100%)	-	-	-	-		
Hourly Operating Cost (100%)						
Total:	USD \$3,545.45	USD \$994.73	USD \$250.97	USD \$37.42	USD \$35.24	USD \$55.38

Non-Active Use Rates

	Hourly
Standby Rate	USD \$10.07
Idling Rate	USD \$30.97

Rate Element Allocation

Element	Percentage	Value
Depreciation (ownership)	54%	USD \$2,097.90/mo
Overhaul (ownership)	29%	USD \$1,126.65/mo
CFC (ownership)	3%	USD \$116.55/mo
Indirect (ownership)	14%	USD \$543.90/mo
Fuel (operating) @ USD 3.27	31%	USD \$10.83/hr

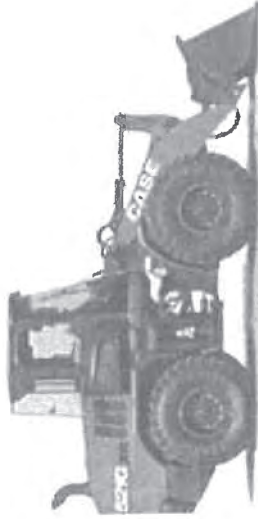
Revised Date: 3rd quarter 2021

These are the most accurate rates for the selected Revision Date(s). However, due to more frequent online updates, these rates may not match Rental Rate Blue Book Print. Visit the Cost Recovery Product Guide on our Help page for more information.

The equipment represented in this report has been exclusively prepared for CLAYTON WEBER
(cweber@hntb.com)

Cat Class: 057-0006

2-3/4 - 3 Yd Artic Loader



- Up to 40° frame articulation
- 4-wheel drive
- Up to 2-3/4 cubic yard bucket
- Max Dump Height: 8' 11" in.
- Max Weight 23,900 lbs.

Online Rate:

1 Day: **\$845 USD** 1 Week: **\$2,245 USD** 4 Weeks: **\$4,365 USD**

Price assumes milling 12" and hauling waste off site.



Texas Materials

1320 Arrow Point Drive, Suite 600
Cedar Park, TX. 78613

<u>Estimator</u>	Orion Fox	<u>Project Location</u>	Ronald Reagan
<u>Phone Number</u>	512-948-6924	<u>City</u>	Georgetown
<u>Control:</u>		<u>County</u>	Williamson
<u>Project:</u>	Ronald Reagan Blvd at Shell Road and Sun City Bl	<u>Plant Location</u>	Liberty Hill
<u>Job Number</u>	OF2010002CO		
<u>Date</u>	April 30, 2021		

Excludes Tax on Materials.
HMAC PER WILCO SPECS

ITEM	DESCRIPTION	QUANTITY	UNIT	UNIT PRICE	AMOUNT
9000	PLANE ASPH CONC PAV (12")	89.00	SY	42.04	3,741.56
GRAND TOTAL					3,741.56

NOTES:

- **Traffic Control excluded from quote.
- **Milling excluded from quote unless quoted as a bid item.

Terms are net 10th of the month. This quote is limited to acceptance within 30 days from the date of this quotation after which time quotation is subject to review and or revision. All courses preceding those to be paved by Texas Materials shall meet or exceed the governing specifications and also meet or exceed the ride specifications. If longitudinal joint location is critical or desired, they shall be laid out by the general contractor prior to the placement of any courses. This quote will become part of the subcontract agreement and shall supersede any other conflicting language in the subcontract agreement.

Prices on accepted quote are firm until 10/30/2021.

Inclusions:

1. Testing for HMAC QCQA items only.
2. Unless the words "Lump Sum" appear next to a price for an item, all prices are per unit, and payments will be based upon the actual number of units performed.
3. If a payment and performance bond is required add 1.5% to the overall bid price.
4. Three Mobilizations included. \$4,000 per each additional Mobilization.
5. Texas Materials to retain all production, ride and placement bonus/penalty on HMAC item(s) according to specification where applicable. The bonus/penalty calculations shall be based on Texas Materials unit prices or the unit bid prices whichever is greater.
6. General contractor to provide onsite staging area convenient to Texas Materials work for equipment, material storage, and equipment cleaning within the project limits.
7. Additional terms of this quote are based upon: acceptable contract/subcontract language, and credit approval.

*****THIS IS NOT AN INVOICE*****

Prime Cont: Terra Path
Highway: Ronald Reagan at Silver Spur
Project: Williamston
County: Williamston
APAC Job #: 560748
PERIOD
From: 5/1/2021 To: 5/31/2021

Item	Description	CONTRACT			Change Order & Over (Underrun)			WORK PERFORMED					
		U/M	\$/Unit	Quantity	Extension	Quantity	Extension	Previous	Quantity	Extension	Quantity	Extension	To Date
10	PRIME CONC (A-E-P)	GAL	\$3.82	1,170.00	\$4,586.40		\$0.00		715.00	\$2,842.00	715.00	\$2,842.00	
20	ASPH (TY-B GR-S SAC-B)	CY	\$174.12	48.00	\$8,357.76		\$0.00		52.50	\$9,141.30	52.50	\$9,141.30	
30	ASPH (AC-1SP)	GAL	\$4.53	1,754.00	\$7,945.62		\$0.00		1,200.00	\$5,436.00	1,200.00	\$5,436.00	
40	D-GR HMA TY-B PG64-22	TON	\$70.42	1,069.00	\$75,079.38		\$0.00		1,088.10	\$76,624.00	1,088.10	\$76,624.00	
50	D-GR HMA TY-D PG70-22	TON	\$84.02	1,637.00	\$138,344.74		\$0.00		1,800.04	\$151,239.36	1,800.04	\$151,239.36	
60	PLANE ASPH CONC PAV (0" TO 2")	SY	\$18.52	735.00	\$13,612.20		\$0.00		1,793.49	\$33,215.43	1,793.49	\$33,215.43	
70	TRACK COAT	GAL	\$3.87	1,894.00	\$7,280.58		\$0.00		325.00	\$1,258.75	325.00	\$1,258.75	
5000	MOBILIZATION	LS	\$13,000.00	1.00	\$13,000.00		\$0.00		1.00	\$13,000.00	1.00	\$13,000.00	
9000	CON1- PLANE ASPH CONC PAV (11")	SY	\$42.04	0.00	\$0.00	89.00	\$3,741.56		89.00	\$3,741.56	89.00	\$3,741.56	
800	CON2- TY-B MIX	TON	\$81.00	0.00	\$0.00	59.84	\$3,650.24		59.84	\$3,650.24	59.84	\$3,650.24	
					\$0.00		\$0.00			\$0.00		\$0.00	
					\$322,012.14		\$7,391.80			\$330,082.64		\$330,082.64	

Original Contract Amount: \$322,012.14
Revisions To Date: \$7,391.80
Current Contract Amount: \$329,403.94
Total To Date: \$330,082.64
Less Retainage: \$0.00
Earned To Date: \$330,082.64
Less Previous Billing: \$0.00
Total This Period: \$330,082.64

NOTES

*****THIS IS NOT AN INVOICE*****

RENTAL PROPOSAL



ACME BARRICADES

PROJECT INFORMATION
Wilco. Ronald Reagan Blvd
CONTROL#:
PROJECT#:
Bid Date: 4/28/21
SBE: 946781

ACME BARRICADES
8632 AMITY SCHOOL RD
BELTON, TEXAS 76513
512-379-2900 phone
512-379-2902 fax
Quote# 4J21-28

DESCRIPTION	UNIT	QNTY	RATE	AMOUNT
BARRICADES				
500 6001 Pilot Car Operation (4 men crew & a pilot truck) (10 hrs shift)	NIGHT	1.00	\$2,100.00	Plus Tax
Police Officer (Off duty or uniformed) (per hour per officer) (4 hrs minimum)	HR	1.00	\$75.00	Plus Tax
Light Tower (per each per day)	EA	1.00	\$120.00	Plus Tax
Deliver, setup and pickup of equipment (one time setup & one time pick up)	EA	1.00	\$1,050.00	Plus Tax
Equipment rental	DAY	1.00	\$150.00	Plus Tax
Subtotal				\$0.00
Sales Tax				\$0.00
Total				\$0.00

DESCRIPTION	UNIT	DAILY	WEEKLY	MONTHLY
EXTRAS				
1 ARROW BOARD	EA	\$70.00	\$200.00	\$600.00
2 MESSAGE BOARD	EA	\$200.00	\$700.00	\$1,800.00
3 TMA	EA	\$200.00	\$1,500.00	\$4,000.00
4 RUMBLE STRIPS	EA	\$200.00	\$600.00	\$1,600.00
* PRICING IS BASED ON CUSTOMER PICKUP FROM ACME YARD		(PLUS TAX)		

Notes:

Excludes removal, relocation or installation of pavement marking.
 Excludes design, engineering permits fines, bonds, or AGC dues.
 Excludes rumble strips, WZ (RS)-14 & 16.
 Excludes daily monitoring of traffic control devices
 Excludes flagmen, pilot car operation or police officer - call for quote
 Excludes daily or nightly traffic control TCP sheets. Call for quote
 Excludes temporary bridge mounted clearance signs or large ground mount overhead signs.
 Contractor is responsible for communicating written discrepancies within 24 hours of notice.
 Excludes permanent signs, water filled barrier, CTB, mailbox, signal, and MBGF
 Excludes edge line and centerline delineators.
 Excludes trailer mounted arrow board.
 Excludes ADA pedestrian ramp or covered walkway.
 Items not specifically noted will be additional

All material will be as specified herein. Any alterations or deviation from above specifications involving extra costs will be performed only upon written orders executed by the parties hereto and will become an extra charge over and above the cost referenced herein.
 Acceptance of Proposal - The above prices specifications and conditions are satisfactory and are hereby accepted. Lessor is authorized to do the work as specified. Payment will be made as outlined above. Acceptance of this Proposal is expressly limited to the terms herein.

Customer Signature

JAIME VIERA / ESTIMATOR

Date

Issue Date

RENTAL PROPOSAL


**ACME
BARRICADES**

PROJECT INFORMATION
Wilco. Ronald Reagan Blvd
CONTROL#:
PROJECT#:
Bid Date: 10/2/20
SBE: 946781

ACME BARRICADES
8632 AMITY SCHOOL RD
BELTON, TEXAS 76613
512-379-2900 phone
512-379-2902 fax
Quote# 10J2-20

DESCRIPTION	UNIT	QNTY	RATE	AMOUNT
BARRICADES				
500 6001 MOBILIZATION	LS	1.00	\$1,661.00	\$1,661.00
BARRICADES SIGNS AND TRAFFIC HANDLING	MO	6.00	\$788.00	\$4,728.00
WILLIAMSON COUNTY BOND SIGNS	EA	4.00	\$400.00	\$1,600.00
			Subtotal	\$7,989.00
			Sales Tax	\$659.09
			Total	\$8,648.09

DESCRIPTION	UNIT	DAILY	WEEKLY	MONTHLY
EXTRAS				
1 ARROW BOARD	EA	\$70.00	\$200.00	\$600.00
2 MESSAGE BOARD	EA	\$200.00	\$700.00	\$1,800.00
3 TMA	EA	\$200.00	\$1,500.00	\$4,000.00
4 RUMBLE STRIPS	EA	\$200.00	\$600.00	\$1,600.00
* PRICING IS BASED ON CUSTOMER PICKUP FROM ACME YARD				
			(PLUS TAX)	

Notes:

Includes perimeter barricades as per TXDOT BC (2) - 14 and channelizing devices.

2 weeks advance notice is require for installation of barricades.

Excludes removal, relocation or installation of pavement marking.

Excludes design, engineering permits fines, bonds, or AGC dues.

Excludes rumble strips, VVZ (RS)-14 & 16.

Excludes daily monitoring of traffic control devices

Excludes flagmen, pilot car operation or police officer - call for quote

Excludes daily or nightly traffic control TCP sheets. Call for quote

Excludes temporary bridge mounted clearance signs or large ground mount overhead signs.

Contractor is responsible for communicating written discrepancies within 24 hours of notice.

Excludes permanent signs, water filled barrier, CTB, mailbox, signal, and MBGF

Excludes edge line and centerline delineators.

Excludes trailer mounted arrow board.

Excludes ADA pedestrian ramp or covered walkway.

Items not specifically noted will be additional

All material will be as specified herein. Any alterations or deviation from above specifications involving extra costs will be performed only upon written orders executed by the parties hereto and will become an extra charge over and above the cost referenced herein.

Acceptance of Proposal - The above prices specifications and conditions are satisfactory and are hereby accepted. Lessor is authorized to do the work as specified. Payment will be made as outlined above. Acceptance of this Proposal is expressly limited to the terms herein.

Customer Signature

JAIME VIERA / ESTIMATOR

Date

Issue Date



QA Construction Services Inc.
5811 Blue Bluff Road
Austin, TX 78724
Phone: 512-637-6120

Change Order #3

7/29/2021

999-WCO4

Project: Ronald Reagan Intersection
Owner: Williamson County

Additional Work - SOD at Silver Spur & Ronald Reagan Intersection

1 -

BID ITEM #	DESCRIPTION	UNIT	Qty	UNIT PRICE	TOTAL PRICE
Force Account					
	Labor - Superintendent (Ryan Helm)	HR	4	\$ 42.00	\$ 168.00
	Labor - General Labor 3 (Ruperto)	HR	12	\$ 25.00	\$ 300.00
	Labor - General Labor (Edgar)	HR	12	\$ 25.00	\$ 300.00
	Labor - General Labor (Eugenio)	HR	12	\$ 25.00	\$ 300.00
	Skidster	HR	4	\$ 48.43	\$ 193.72
	Loader	DAY	1	\$ 700.00	\$ 700.00
	SOD (Pallets)	SF	4500	\$ 0.20	\$ 900.00
	SOD Delivery Charge	EA	1	\$ 650.00	\$ 650.00
Total Cost (Material & Labor)					
Cost Overhead					
Total Material Cost				\$ 1,550.00	15% \$ 1,782.50
Equipment				\$ 893.72	15% \$ 1,027.78
Labor				\$ 1,068.00	55%/15% \$ 1,903.71
				Overhead Cost \$ 4,713.99	
Subtotal				\$ 4,713.99	
Mark-up				15%	
Insurance & Bond Adjustments				2%	\$ 94.28
Total Cost				\$ 4,808.27	

Breakdown:

1 -

SOD at Silver Spur & Ronald Reagan Intersection

\$ 4,808.27

Total Cost for Change Order No. 1 \$ 4,808.27

By Contractor:

Major Davenport Project Manager - QA Construction Services Inc.

7/29/2021

Date

Approved by:

Construction Observer: Clayton Weber, HNTB

Date

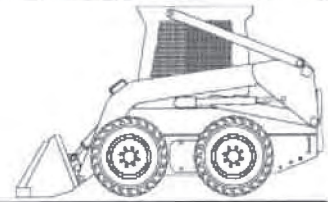
Program Manager: Michael Weaver, Prime Strategies

Date

Senior Director of Infrastructure: Robert B. Daigh, Williamson County

Date

Rental Rate Blue Book®
Caterpillar 262D
Skid Steer Loaders

Size Class:
2501 - 2900 lbs
Weight:
N/A

Configuration for 262D

Hydraulic Tank Capacity
Power Mode

10.3 gal
Diesel

Operator Protection

ROPS
Blue Book Rates

** FHWA Rate is equal to the monthly ownership cost divided by 176 plus the hourly estimated operating cost.

	Ownership Costs				Estimated Operating Costs	FHWA Rate**
	Monthly	Weekly	Daily	Hourly	Hourly	Hourly
Published Rates	USD \$5,095.00	USD \$1,425.00	USD \$355.00	USD \$53.00	USD \$22.46	USD \$51.41
Adjustments						
Region (Texas: 89.7%)	(USD \$524.78)	(USD \$146.77)	(USD \$36.56)	(USD \$5.46)		
Model Year (2018: 99.9%)	(USD \$4.57)	(USD \$1.28)	(USD \$0.32)	(USD \$0.05)		
Adjusted Hourly Ownership Cost (100%)	-	-	-	-		
Hourly Operating Cost (100%)					-	
Total:	USD \$4,565.65	USD \$1,276.95	USD \$318.12	USD \$47.49	USD \$22.46	USD \$48.40

Non-Active Use Rates

Standby Rate
Idling Rate

Hourly

USD \$12.97
USD \$34.86

Rate Element Allocation

Element	Percentage	Value
Depreciation (ownership)	24%	USD \$1,222.80/mo
Overhaul (ownership)	66%	USD \$3,362.70/mo
CFC (ownership)	2%	USD \$101.90/mo
Indirect (ownership)	8%	USD \$407.60/mo
Fuel (operating) @ USD 3.27	40%	USD \$8.92/hr

Revised Date: 3rd quarter 2021

These are the most accurate rates for the selected Revision Date(s). However, due to more frequent online updates, these rates may not match Rental Rate Blue Book Print. Visit the Cost Recovery Product Guide on our Help page for more information.

The equipment represented in this report has been exclusively prepared for CLAYTON WEBER
(cweber@hntb.com)

Cat Class: 957-0006

2-3/4 - 3 Yd Artic Loader



- Up to 40° frame articulation
- 4-wheel drive
- Up to 2-3/4 cubic yard bucket
- Max Dump Height: 8' 1" in.
- Max Weight 23,900 lbs.

Online Rate:

1 Day: **\$845 USD** 1 Week: **\$2,245 USD** 4 Weeks: **\$4,365 USD**

Invoice

JOURDANTON FARMS
1228 COUNTY ROAD 303
JOURDANTON TX 78026
830-580-1410



Invoice# 172894
Invoice Date: 6/11/2021
Customer No: 2344270

Sold To
QA CONSTRUCTION
5811 BLUE BLUFF RD
AUSTIN TX 78724-5930

LUPITA
210 300 2362

Ship To
MAJOR
202 YORKTOWN ST
GEORGETOWN TX 78633-2284

PO. 4012

Order Number	Delivery Date	Pick Up/Delivery	Customer PO#	Driver	KR BOL #
232570	06/12/2021	Delivered	4012 (5137)	RPS TRUCKING DRIVER	74130

Item Description	Quantity	Price	Per	Amount
TIFTUF BERMUDA 450SF PL	10.00 PL 4,500.00 SF	\$0.2000	Per SF	\$900.00
DELIVERY CHARGE	1.00 EA 1.00 EA	\$650.0000	Per EA	\$650.00

MAJOR
202 YORKTOWN ST
GEORGETOWN TX 78633-2284

Payment Description	Payment Date	Location	Applied Amount
Total Payments			

Notes

Total Sales Tax ~~\$104.63~~
Total Purchased ~~\$1,654.63~~
Total Refunds
Total Payments
Due On Invoice ~~\$1,654.63~~

Signature

If Payment Due, please remit to
KING RANCH TURFGRASS LP
PO BOX 733213
DALLAS TX 75373-3213

PAID

TOTAL
\$ 1550.00

6/12

CONCRETE COMPRESSIVE STRENGTH TEST REPORT

Report Number: AC201154.0013

Service Date: 05/20/21

Report Date: 07/16/21 Revision 3 - 56-day results

Task:

Terracon

5307 Industrial Oaks Blvd Ste 160

Austin, TX 78735-8821

512-442-1122 Reg No: F-3272

Client

QA Construction Services Inc
Attn: Ahmad Masoumi
5811 Blue Bluff Rd
Austin, TX 78724

Project

Ronald Reagan at Silver Spur and Sun City
Ronald Reagan Blvd and Sun City Blvd
Georgetown, TX

Project Number: AC201154

Material Information

Specified Strength: 3,600 psi @ 28 days

Mix ID: CC2160A

Supplier: Custom-Crete

Batch Time: 1600 Plant: N/A

Truck No.: 757 Ticket No.: 498304

Sample Information

Sample Date: 05/20/21 Sample Time: 1600

Sampled By: Spencer Blair

Weather Conditions: Clear

Accumulative Yards: N/A Batch Size (cy): 9.5

Placement Method: Direct Discharge

Water Added Before (gal): 0

Water Added After (gal): 0

Sample Location: Light pole pier at 110+68 51.00 RT

Placement Location: Light pole piers at 110+68, 110+00,
310+45

Field Test Data

Test	Result	Specification
Slump (in):	7	
Air Content (%):	2.7	
Concrete Temp. (F):	85	
Ambient Temp. (F):	82	
Plastic Unit Wt. (pcf):		
Yield (Cu. Yds.):		

Laboratory Test Data

Set No.	Specimen ID	Avg Diam. (in)	Area (sq in)	Date Received	Date Tested	Age at Test (days)	Maximum Load (lbs)	Compressive Strength (psi)	Fracture Type	Tested By
1	A	4.00	12.57	05/27/21	05/27/21	7 F	77,560	6,170	2	PMC
1	B	4.00	12.57	05/27/21	06/17/21	28 F	104,370	8,310	2	PMC
1	C	4.00	12.57	05/27/21	06/17/21	28 F	103,140	8,210	2	PMC
1	D	4.00	12.57	05/27/21	06/17/21	28 F	102,830	8,180	2	PMC
1	E	4.00	12.57	05/27/21	07/15/21	56 F	114,540	9,110	1	PMC

Initial Cure: Outside

Final Cure: Water Storage Tank

Comments: Not tested for plastic unit weight. F = Field Cured

Note: Reported air content does not include Aggregate Correction Factor (ACF).

Samples Made By: Terracon

Services: Obtain samples of fresh concrete from the ready-mix truck (ASTM C172), perform required field test (ASTM C31) and cast compressive strength samples (ASTM C39).

Terracon Rep.: Spencer Blair

Reported To: HNTB Inspector

Contractor:

Report Distribution:

(1) QA Construction Services Inc, Ahmad Masoumi

(1) Terra Path Inc, Major Davenport

(1) Terra Path Inc, Ryan Helms

Test Methods: ASTM C 31, ASTM C39, ASTM C143, ASTM C172, ASTM C231, ASTM C1064

The tests were performed in general accordance with applicable ASTM, AASHTO, or DOT test methods. This report is exclusively for the use of the client indicated above and shall not be reproduced except in full without the written consent of our company. Test results transmitted herein are only applicable to the actual samples tested at the location(s) referenced and are not necessarily indicative of the properties of other apparently similar or identical materials.



REQUEST FOR INFORMATION FORM

RFI NO.: 4 DATE: 12/18/20
PROJECT: R. Reagan @ Silver Spur & Sun City RESPONSE REQUESTED BY
DATE: 1/4/21
TO: WSB: Dan Rogers, P.E,

REFERENCE: Plan Sheet 39 and attachments, concerning center median, exit side of Silver Spur

PROBLEM: Maintain profile of exit portion of Silver Spur, minimize construction

Refer to attached survey information of existing roadway. Plans show center median offset to match the edge of pavement of right turn lane. This creates a lot of work to modify profile of exit side of Silver Spur. Also need to maintain platform where traffic stops to enter Reagan Blvd. Let me know if you have any questions or need to discuss situation.

RECOMMENDED SOLUTION:

We would like to propose to move the center median radius forward to match the offset of the typical roadway widening north of Silver Spur. By moving the radius point, we would minimize the grade change of the exist side portion of Silver Spur. Our goal is to minimize the work so that it can be accomplished with daily short term single lane closures. Alternate route for full closures are long and inconvenient for traffic.

Clayton Weber
Originator

Lowell Choate, P.E.
Supervisor

RESPONSE:

Attached are the updated plan sheets, including an updated driveway detail sheet.



Responder

2/3/2021

Date

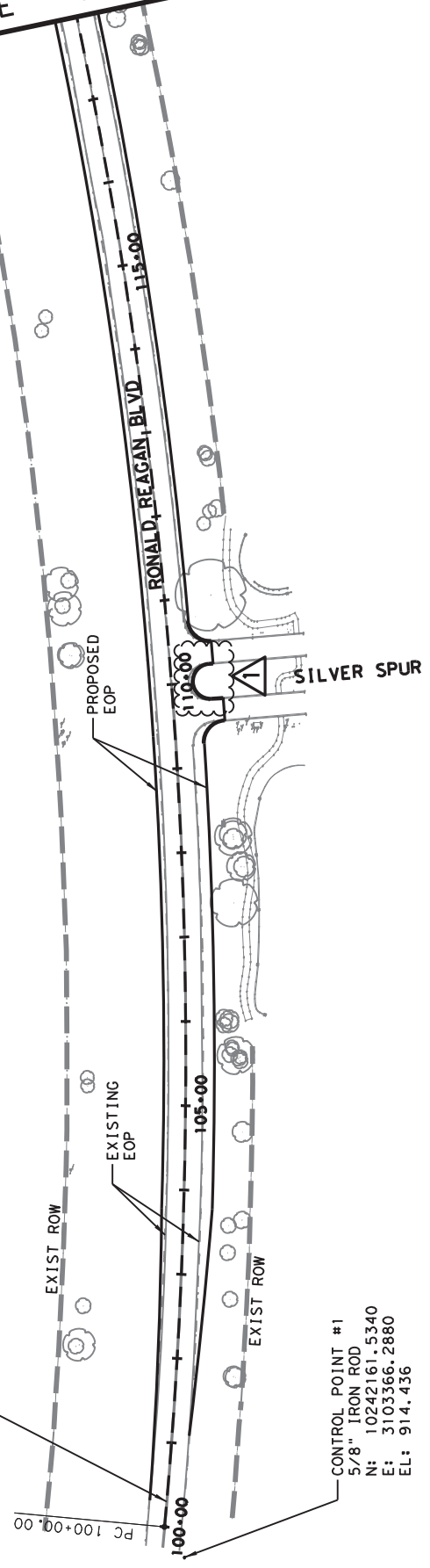
Sign, Date & Return to HNTB via e-mail or fax.

Mail original to: HNTB Corporation
101 E Old Settlers Blvd, Ste 100
Round Rock, Texas 78664

Attachments to RFI: Survey info from contractor

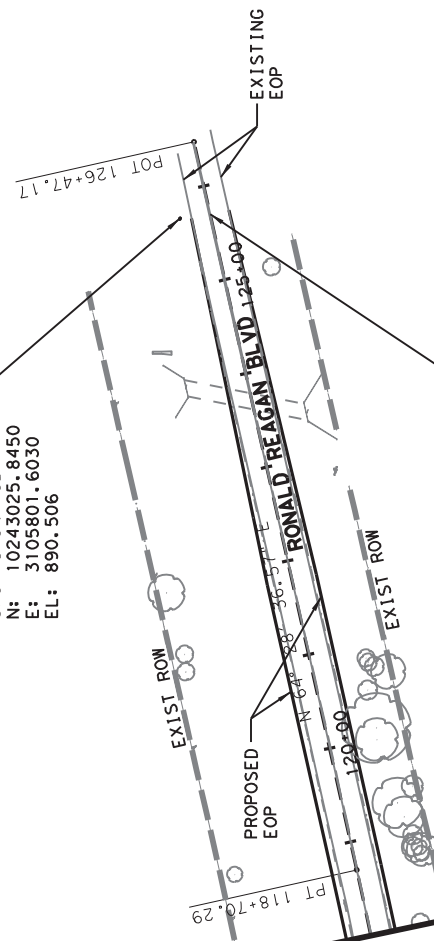
Cc:

BEGIN PROJECT
STA 100+30.00
N: 10242166.7928
E: 3103426.0059



CONTROL POINT #1
5/8" IRON ROD
N: 10242161.5340
E: 3103366.2880
EL: 914.436

CONTROL POINT #2
5/8" IRON ROD
N: 10243025.8450
E: 3105801.6030
EL: 890.506



< * 1 DESCRIBE CHAIN RRWA2

Chain RRWA2 contains:
CUR RRWA21 RR02

Beginning chain RRWA2 description

Curve Data		*-----*	
Curve RRWA21			
P.I. Station	=	109+42.79	N 10,242,288
Delta	=	17° 51' 35.86"	(LT)
Degree	=	0° 57' 17.75"	
Tangent	=	942.7917	
Length	=	1,870.2908	
Radius	=	6,000.0000	
External	=	73.6197	
Long Chord	=	1,862.7279	
Mid. Ord.	=	72.7273	
P.C. Station	=	100+00.00	N 10,242,162
C.C. Station	=	118+70.29	N 10,242,694
Back	=	N 82° 20' 12.43"	E 10,248,109
Ahead	=	N 64° 28' 36.57"	E 10,248,109
Chord Bear	=	N 73° 24' 24.50"	E 10,248,109
Course from PT RRWA21 to RR02 N 64° 28' 36.57" E Di			
Point RR02 N 10,243,029.4050 E 3,105,			
Ending chain RRWA2 description			

ROADWAY QUANTITIES SUMMARY

ROWY SHEET NO.	100	110	132	247	310	316	316	340	340	529	3076	6001
	6002	6001	6003	6044	6005	6193	64'3	6011	6120	6038	6066	6001
	PREPARING ROW	EXCAVATION (RDWY)	EMBANKMENT (FINAL) (ORD COMP) (TY B)	FLBS (CMP IN PLACE) (TY A GR 4) (FINAL POS)	PRIME COAT (AE-P)	AGGR (TY-D GR-5 SAC-B)	ASPH (AC-13P, HFRS-2P or CRS-2P)	D-GR HMA(SQ) TY-B PG64-22	D-GR HMA(SQ) TY-D SAC-B PG70-22	CONC CURB (RIBBON)	TACK COAT	PORTABLE CHANGEABLE MESSAGE SIGN
	STA	CY	CY	CY	GAL	CY	GAL	TON	TON	LF	GAL	DAY
1 OF 3	10.7	3193	537	1520	576	23	864	794	788	178	876	
2 OF 3	10.0	2380	1253	1145	434	17	651	598	672		721	
3 OF 3	4.7	565	684	394	150	6	224	202	286		291	
SUN CITY									84		66	
TOTAL	25.4	6138	2474	3059	1160	46	1739	1594	1830	178	1954	60

EROSION CONTROL QUANTITIES SUMMARY

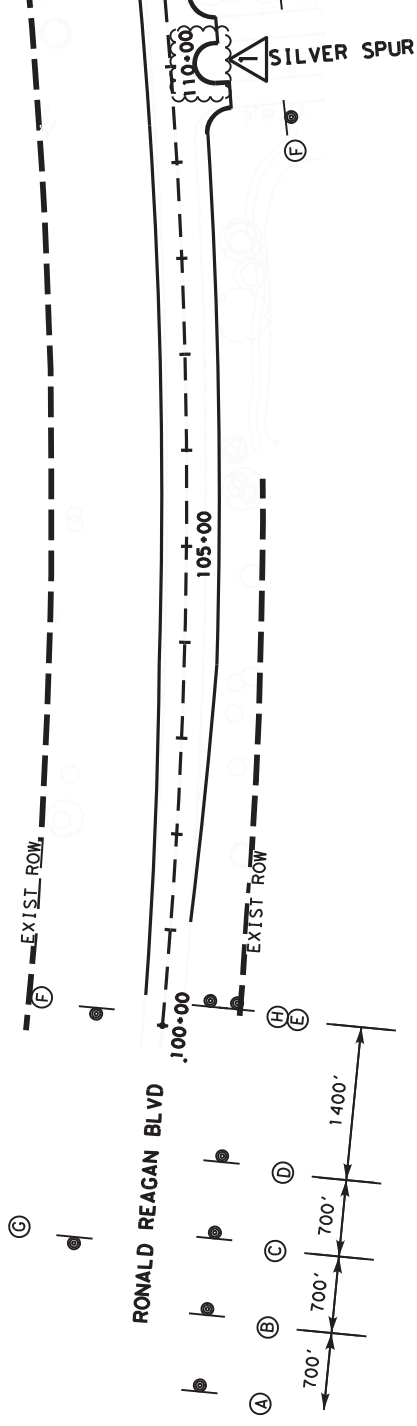
EROSION CONTROL SHEET NO.	160	161	162	134	164	164	164	166	168	169	506	506
	WC02	WC001	WC103	WC04	WC05	WC10	WC01	6002	WC01	6001	6011	6021
	FURNISHING AND PLACING TOPSOIL (4")	EROSION CONTROL COMPOST (3")	MULCH TOPDRESSING (5")	SEEDING FOR EROSION CONTROL (TEMP) (COOL) (TY 4)	SEEDING FOR EROSION CONTROL (PERM) (WARM) (TY 5)	SEEDING FOR EROSION CONTROL (TEMP) (WARM) (TY 10)	FERTILIZER	VEGETATIVE WATERING	SOIL RETENTION BLANKETS (CL 1) (TY A)	ROCK FILTER DAMS (INSTALL) (TY 2)	ROCK FILTER DAMS (REMOVE)	CONSTRUCTION EXISTING (INSTALL)
	SY	SY	SY	SY	SY	SY	TON	MG	SY	LF	LF	SY
1 OF 2	13363	3341	3341	6682	13363	6682	0.84	400.9	6132	60	60	78
2 OF 2	4162	1041	1041	2081	4162	2081	0.27	124.9	2353	167	167	78
TOTAL	17525	4382	4382	8763	17525	8763	1.11	525.8	8485	227	227	156

FLASHING BEACON QUANTITIES SUMMARY

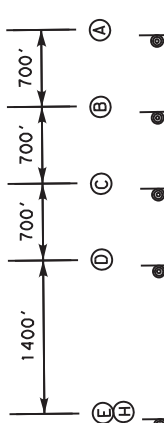
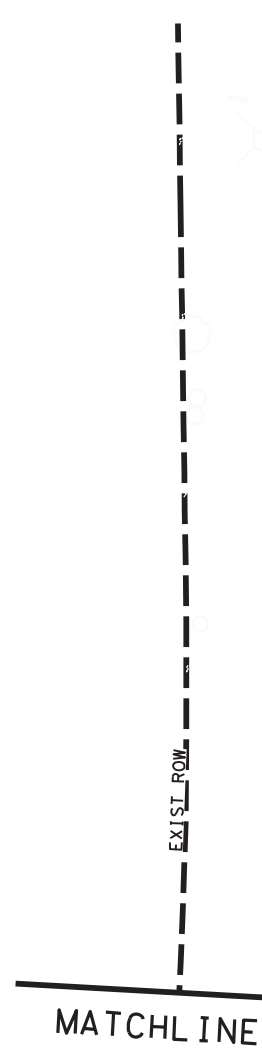
FLASHING BEACON SHEET NO.	416	416	610	618	624	680	682	682	684	684	686	606
	6029	6032	6215	6023	6001	WC01	6003	6005	6001	6010	6007	608
	DRILL SHAFT (RDWY ILL POLE) (30 IN)	DRILL SHAFT (TRF SIG POLE) (36 IN)	IN RD ILL (TY SA) 40T-8 (250W EQ) LED	CONDIT (PVC) (SCH 40) (2")	GROUND BOX TY A (122311)	INSTALL HWY TRF SIG (FLASH BEACON) (SOLAR)	VEH SIG SEC (12") LED (YEL)	VEH SIG SEC (12") LED (RED)	TRF SIG CBL (TY A)(10 AWG)(2 CONDR)	TRF SIG CBL (TY A)(12 AWG)(5 CONDR)	INS TRF SIG PL AM (SISTR(TY B)	ITS POL CAB 2)(CON
	LF	LF	EA	LF	EA	EA	EA	EA	LF	LF	EA	EA
SILVER SPUR	8	28	1	10	1	1	4	2	20	110	2	1
SUN CITY		28				1	4	2	20	130	2	1
TOTAL	8	56	1	10	1	2	8	4	40	240	4	2

SIGNING & PAVEMENT MARKINGS SUMMARY

SIGNING & PAVEMENT MARKINGS SHEET NO.	644	544	644	666	666	666	666	666	666	666	666	666
	6060	6068	6071	6303	6303	6030	6036	6054	6078	6315	6141	6141
	INS SMRD SN SUP & AM TYTWT(1) WS(P)	RELOCATE SM RD SN SUP & AM TY 10BWG	RELOCATE SM RD SN SUP & AM TY TWT	RE PM W/RET REQ TY 1 (W) 4" (SLD) (100 MIL)	RE PM W/RET REQ TY 1 (W) 4" (SLD) (100 MIL)	REFL PAV MRK TY 1 (W) 8" (DOT) (100 MIL)	REFL PAV MRK TY 1 (W) 8" (SLD) (100 MIL)	REFL PAV MRK TY 1 (W) (ARROW) (100 MIL)	REFL PAV MRK TY 1 (W) (WORD) (100 MIL)	RE PM W/RET REQ TY 1 (Y) 4" (SLD) (100 MIL)	REFL PAV MRK TY 1 (Y) 12" (SLD) (100 MIL)	REFL PAV MRK TY 1 (Y) 12" (SLD) (100 MIL)
	EA	EA	EA	EA	EA	EA	EA	EA	EA	EA	EA	EA
1 OF 3	1	1	1	4010	4010	218	1704	4	4	3880	1720	62
2 OF 3				940	940	20				1564		
3 OF 3	2			547	547	75	321					

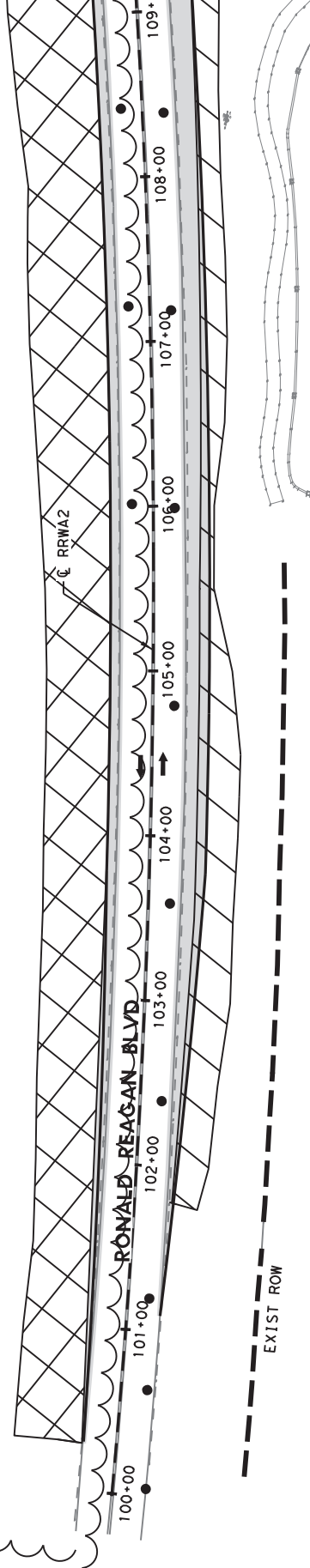


OBAY WARNING SIGNS STATE LAW	STAY ALERT TALK OR TEXT LATER	BEGIN ROAD WORK NEXT X MILE	END ROAD WORK	BEGIN ROAD WORK NEXT X MILE	END WORK ZONE
WHEN WORKERS ARE PRESENT	TRAFFIC FINES DOUBLE	NAME ADDRESS CITY STATE CONTRACTOR	G20-10T 60" x 48"	R20-1D 48" x 48"	G20-6 48" x 30"





EXIST ROW



EXIST ROW

STA. 111+00

RRWA2

RONALD REAGAN BLVD

112+00

113+00

114+00

115+00

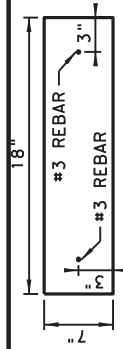
116+00

117+00

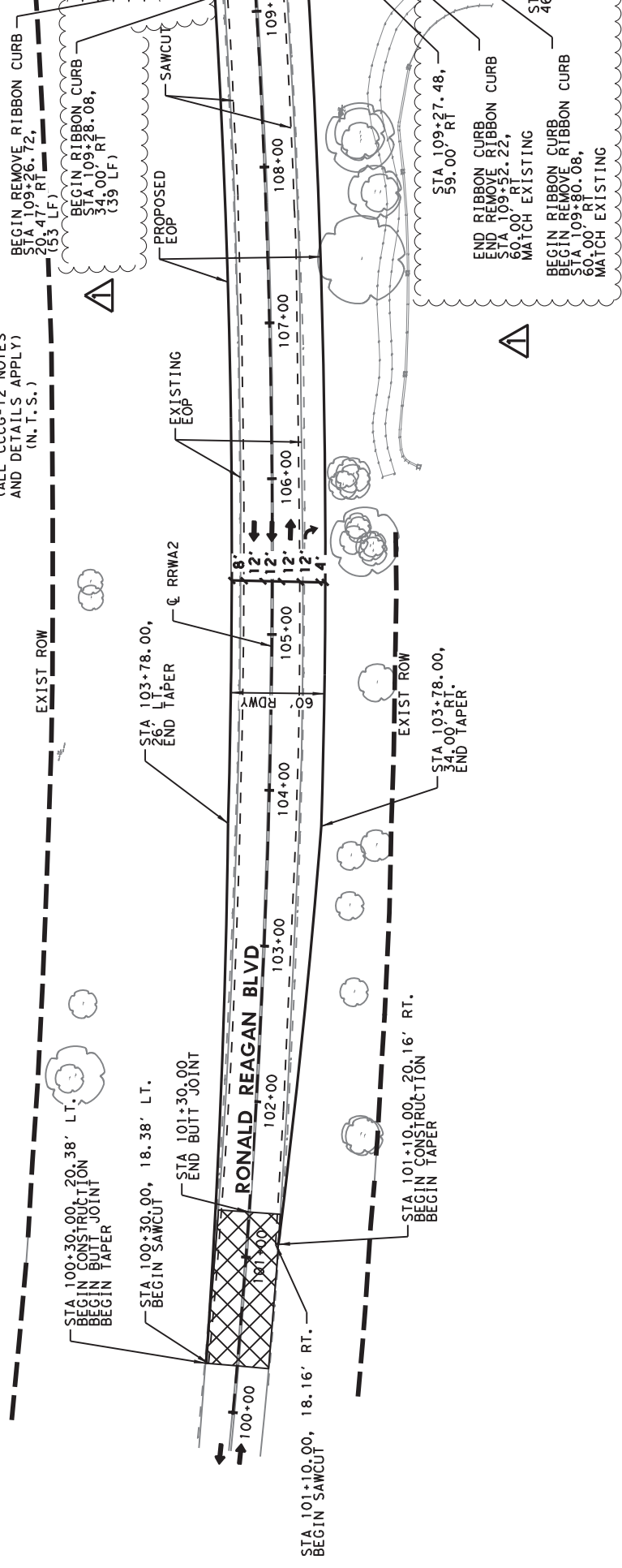
118+00

119+00

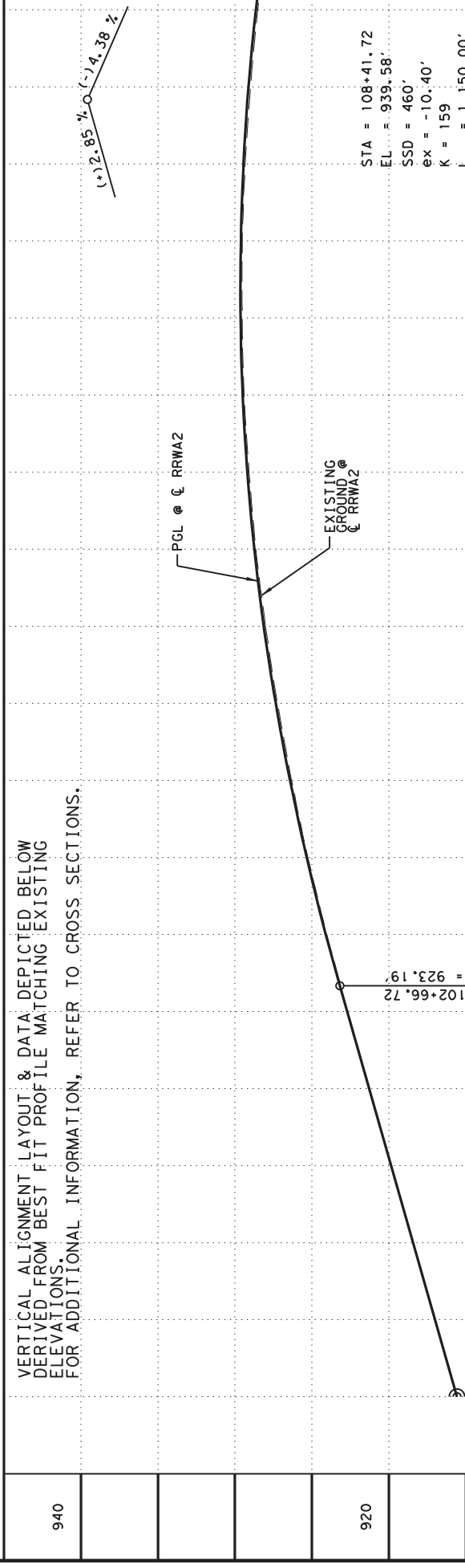
120+00



RIBBON CURB
DETAIL
(ALL CCCG-12 NOTES
AND DETAILS APPLY)
(N. T. S.)



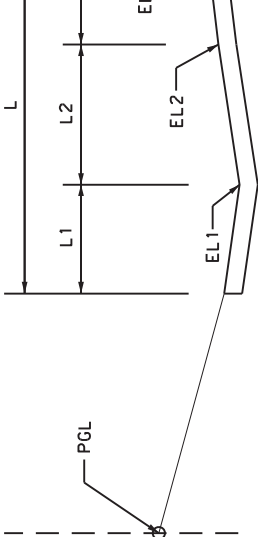
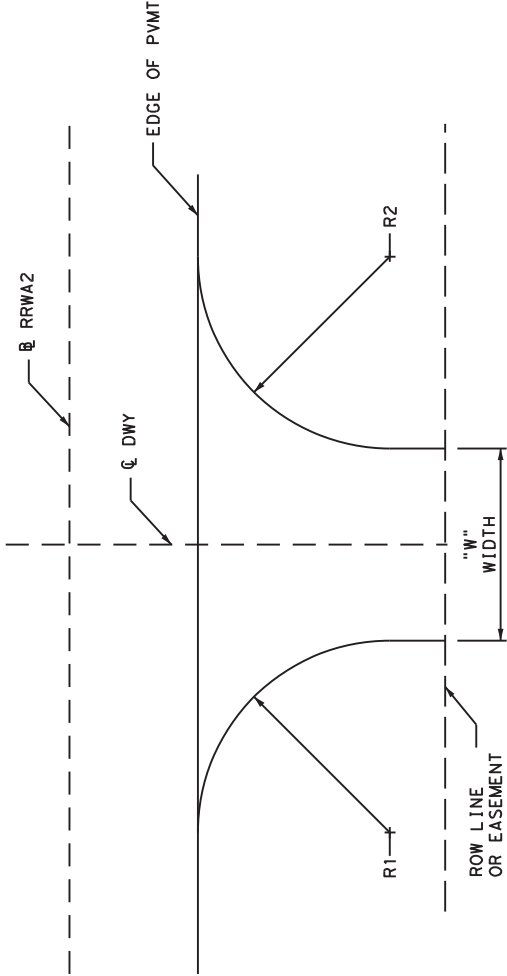
VERTICAL ALIGNMENT LAYOUT & DATA DEPICTED BELOW
DERIVED FROM BEST FIT PROFILE MATCHING EXISTING
ELEVATIONS.
FOR ADDITIONAL INFORMATION, REFER TO CROSS SECTIONS.



SUMMARY OF DRIVEWAY DETAILS

P&P SHEET NO.	DRIVEWAY ID	CL STATION	RT/LT	R1 (FT)	STA	OFF	R2 (FT)	STA	OFF	W (FT)	L (FT)	RDWY GRADE (%)	EOP ELEV (FT)	L1 (FT)	EL1 (FT)	GRADE1 (%)	L2 (FT)	EL2 (FT)
1	DWY 1	109+65.55	RT	25	109+27.48	59	20	110+00.00	60	25.11	30.0	1.4	928.09	30.0	927.90	-0.6		
	DWY 2	112+45.26	RT	20	110+00.00	46	25	110+72.95	51	25.17	26.4	2.5	927.07	26.5	928.11	3.9		

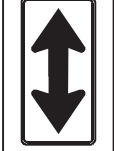
NOTE: DRIVEWAY IS PAID UNDER ROADWAY ITEMS.



TYPICAL ASPHALT DRIVEWAY PLAN

TYPICAL ASPHALT DRIVEWAY

W1-7T
96"X36"



2

EXIST ROW

REMOVE & RELOCATE
EXIST SIGN

STA 100+30
BEGIN (A) DBL
TRANSITION
12.0' LT

STA 103+78
BEGIN (D) DBL
TRANSITION
6.00' LT

STA 103+78
END (A) DBL
TRANSITION
18.0' LT
BEGIN (A) DBL
TRANSITION
18.0' LT

EXISTING
EOP

STA 104+78
BEGIN (D) DBL
TRANSITION
6.0' LT

STA 107+78
END (D) DBL
TRANSITION
6.0' LT
BEGIN (C) DBL
TRANSITION
6.0' LT

PROPOSED
EOP

STA 109+
BEGIN (C) DBL
TRANSITION
6.28' LT

STA 103+78
END (D) DBL
TRANSITION
18.00' RT
BEGIN (C) DBL
TRANSITION
18.00' RT

STA 103+78
END (A) DBL
TRANSITION
30.0' RT
BEGIN (A) DBL
TRANSITION
30.0' RT

STA 103+78
END (D) DBL
TRANSITION
18.00' RT
BEGIN (C) DBL
TRANSITION
18.00' RT

STA 103+78
END (A) DBL
TRANSITION
30.0' RT
BEGIN (A) DBL
TRANSITION
30.0' RT

STA 103+90
END (I) DBL
TRANSITION
6.0' RT
BEGIN (I) DBL
TRANSITION
6.0' RT

STA 103+78
END (D) DBL
TRANSITION
18.00' RT
BEGIN (C) DBL
TRANSITION
18.00' RT

STA 103+78
END (A) DBL
TRANSITION
30.0' RT
BEGIN (A) DBL
TRANSITION
30.0' RT

STA 104+78
BEGIN (D) DBL
TRANSITION
6.0' LT

STA 107+78
END (D) DBL
TRANSITION
6.0' LT
BEGIN (C) DBL
TRANSITION
6.0' LT

STA 109+
BEGIN (C) DBL
TRANSITION
6.28' LT

STA 103+78
END (D) DBL
TRANSITION
18.00' RT
BEGIN (C) DBL
TRANSITION
18.00' RT

STA 103+78
END (A) DBL
TRANSITION
30.0' RT
BEGIN (A) DBL
TRANSITION
30.0' RT

STA 103+90
END (I) DBL
TRANSITION
6.0' RT
BEGIN (I) DBL
TRANSITION
6.0' RT

STA 104+78
BEGIN (D) DBL
TRANSITION
6.0' LT

STA 107+78
END (D) DBL
TRANSITION
6.0' LT
BEGIN (C) DBL
TRANSITION
6.0' LT

STA 109+
BEGIN (C) DBL
TRANSITION
6.28' LT

STA 100+30
BEGIN (I) DBL
TRANSITION
0.0'
BEGIN (A) DBL
TRANSITION
12.0' RT

STA 103+78
END (D) DBL
TRANSITION
18.00' RT
BEGIN (C) DBL
TRANSITION
18.00' RT

STA 103+78
END (A) DBL
TRANSITION
30.0' RT
BEGIN (A) DBL
TRANSITION
30.0' RT

STA 103+90
END (I) DBL
TRANSITION
6.0' RT
BEGIN (I) DBL
TRANSITION
6.0' RT

STA 103+78
END (D) DBL
TRANSITION
18.00' RT
BEGIN (C) DBL
TRANSITION
18.00' RT

STA 104+78
BEGIN (D) DBL
TRANSITION
6.0' LT

STA 107+78
END (D) DBL
TRANSITION
6.0' LT
BEGIN (C) DBL
TRANSITION
6.0' LT

STA 109+
BEGIN (C) DBL
TRANSITION
6.28' LT

R3-7R
36"X36"
RIGHT LANE
MUST
TURN RIGHT

1

2

3

4

5

6

7

8

9

10

11

12

13

14

15

16

17

18

19

20

21

22

23

24

25

26

27

28

29

30

31

32

33

34

35

36

37

38

39

40

41

42

43

44

45

46

47

48

49

50

51

52

53

54

55

56

57

58

59

60

61

62

63

64

65

66

67

68

69

70

71

72

73

74

75

76

77

78

79

80

81

82

83

84

85

86

87

88

89

90

91

92

93

94

95

96

97

98

99

100

101

102

103

104

105

106

107

108

109

110

111

112

113

114

115

116

117

118

119

120

121

122

123

124

125

126

127

128

129

130

131

132

133

134

135

136

137

138

139

140

141

142

143

144

145

146

147

148

149

150

151

152

153

154

155

156

157

158

159

160

161

162

163

164

165

166

167

168

169

170

171

172

173

174

175

176

177

178

179

180

181

182

183

184

185

186

187

188

189

190

191

192

193

194

195

196

197

198

199

200

201

202

203

204

205

206

207

208

209

210

211

212

213

214

215

216

217

218

219

220

221

222

223

224

225

226

227

228

229

230

231

232

233

234

235

236

237

238

239

240

241

242

243

244

245

246

247

248

249

250

251

252

253

254

255

256

257

258

259

260

261

262

263

264

265

266

267

268

269

270

271

272

273

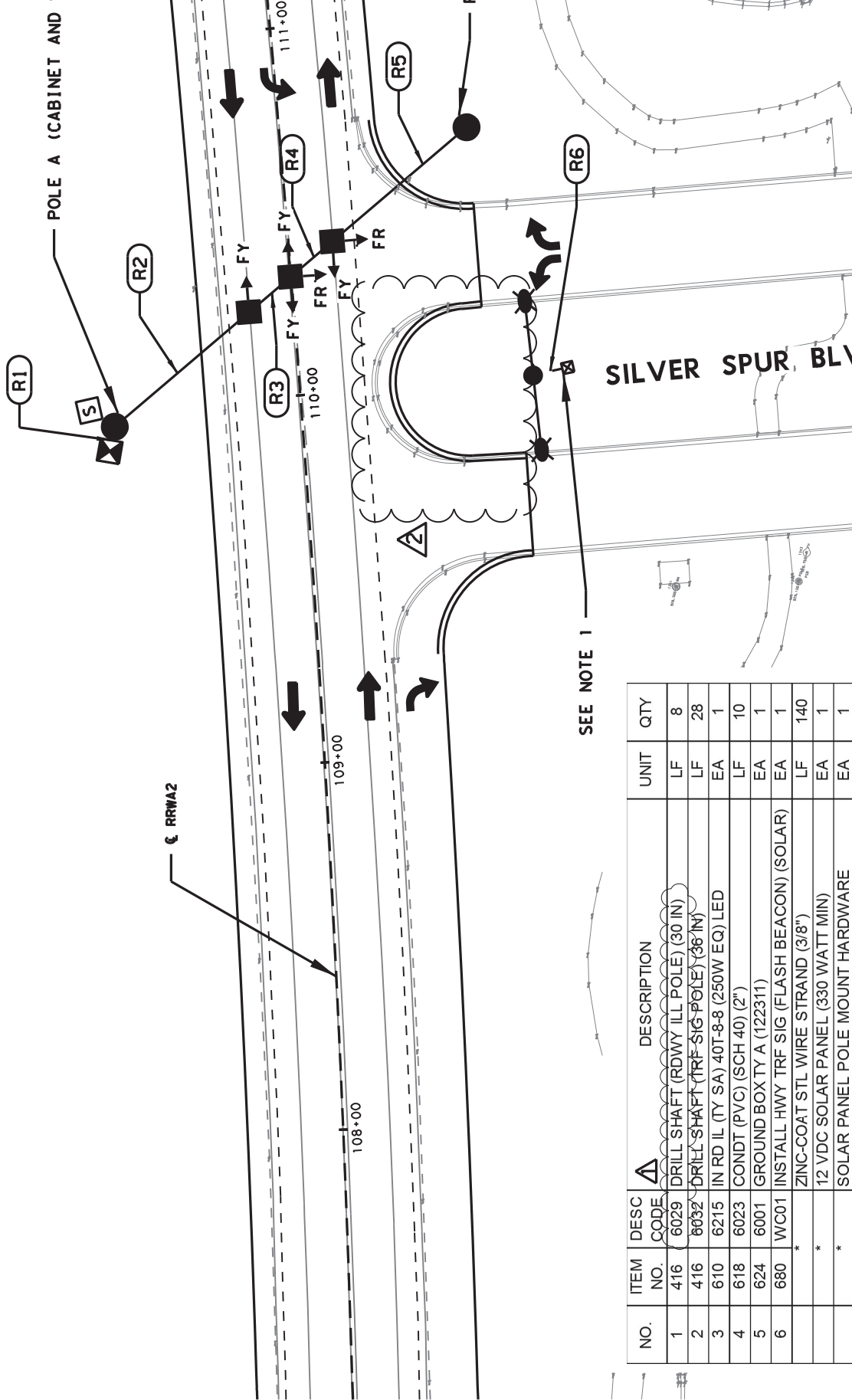
274

275

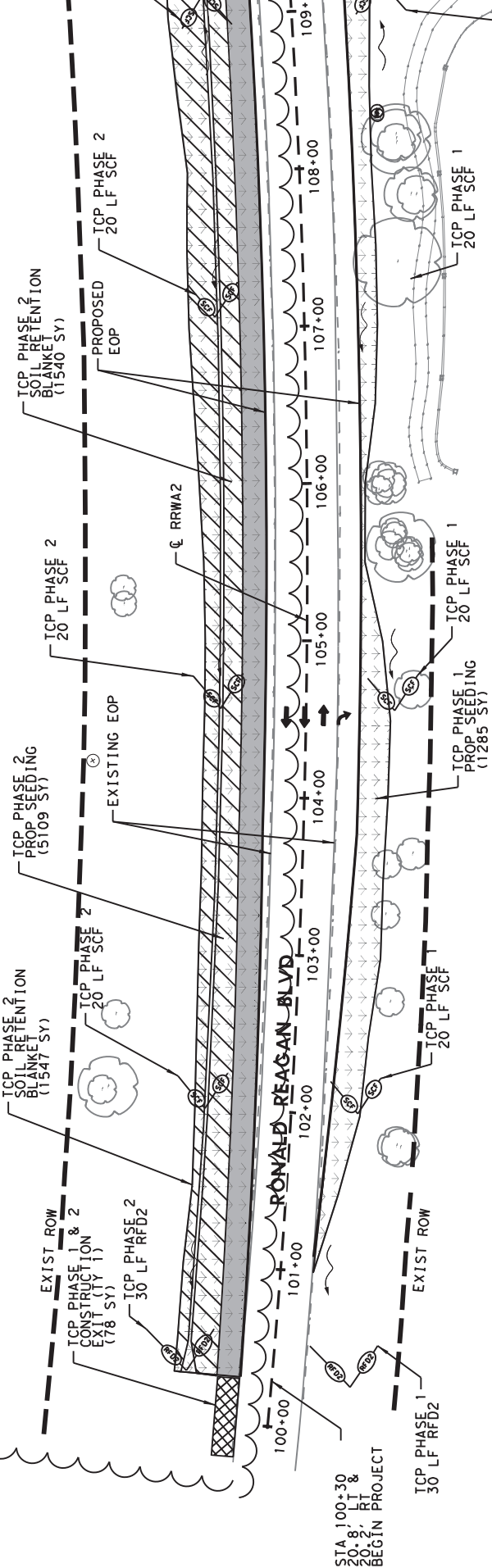
276

EXISTING ROW

STEEL STRAIN POLES					
POLE ID	QUANTITY	POLE DESIGNATION	FOUNDATION TYPE	FOUNDATION DEPTH	STATION
A	1	SP 30 B-100	36-A	14	109+95.21
B	1	SP 30 B-100	36-A	14	110+68.68
TOTAL	2			28	



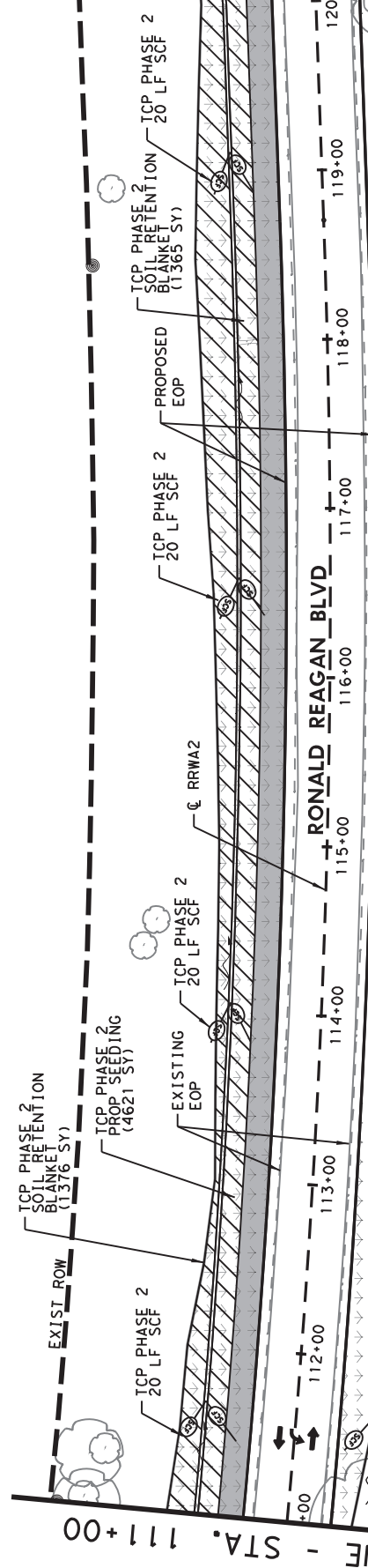
NO.	ITEM NO.	DESC CODE	DESCRIPTION	UNIT	QTY
1	416	6029	DRILL SHAFT (RDWY ILL POLE) (30 IN)	LF	8
2	416	6032	DRILL SHAFT (TRF SIG POLE) (36 IN)	LF	28
3	610	6215	IN RD IL (TY SA) 40T-8-8 (250W EQ) LED	EA	1
4	618	6023	CONDT (PVC) (SCH 40) (2")	LF	10
5	624	6001	GROUND BOX TY A (122311)	EA	1
6	680	WC01	INSTALL HWY TRF SIG (FLASH BEACON) (SOLAR)	EA	1
	*		ZINC-COAT STL WIRE STRAND (3/8")	EA	140
	*		12 VDC SOLAR PANEL (330 WATT MIN)	EA	1
	*		SOLAR PANEL POLE MOUNT HARDWARE	EA	1



SUMMARY OF EROSION CONTROL

SYMBOL	ITEM NO.	DESCRIPTION	UNIT	QUANTITY
	160	FURN AND PLAC TPSL (4'')	SY	13363
	160	EROSION CONTROL COMPOST (3'')	SY	3341
	160	MULCH TOPDRESSING (5'')	SY	3341
	164	SEEDING (TEMP) (COOL) (TY 4)	SY	6682
	164	SEEDING (PERM) (WARM) (TY 5)	SY	13363
	164	SEEDING (TEMP) (WARM) (TY 10)	SY	6682

SYMBOL	ITEM NO.	DESCRIPTION	UNIT	QUANTITY
	166	FERTILIZER	TON	0
	168	VEGETATIVE WATERING	MG	4
	168	SOIL RETENTION BLANKETS (CL 1) (TY A)	SY	6
	506	ROCK FILTER DAM (TY 2)	LF	
	506	TEMP SEDIMENT CONTROL FENCE	LF	
	506	CONSTRUCTION EXIT (TY 1)	SY	



EXIST ROW

④

℄ RRWA2

RONALD REAGAN BLVD

100+00

101+00

102+00

103+00

104+00

105+00

106+00

107+00

108+00

109+

③

EXIST ROW

EXIST ROW

FE - STA. 111+00

℄ RRWA2

110+00

112+00

113+00

114+00

115+00

116+00

117+00

118+00

119+00

120

RONALD REAGAN BLVD