

# WILLIAMSON COUNTY, TEXAS

CHANGE ORDER NUMBER: 21

Contractor: James Construction Group, LLC NTP Required: ☒ Yes ☐ No

Project Name: FM 3349 at US 79

Change Order Work Limits: Sta. 2453+00 to Sta. 2468+00

Type of Change(on federal-aid non-exempt projects): Minor (Major/Minor)

Reasons: 1B (3 Max. - In order of importance - Primary first)

Contract Award Date:	9/13/2022
Project Number:	22IFB139
Funding Source:	P332
Roadway:	FM 3349
CSJ Number:	3486-01-008

Describe the work being revised:

**1B. Design Error or Omission.** This Change Order compensates the Contractor for installing long-span metal beam guard fence in the project. At several locations on south bound frontage road (SBFR), the backless concrete inlets conflict with the location of the wooden posts supporting the metal beam guard fence (MBGF) runs. These conflicts were reviewed by the Engineer of Record, and it was recommended to utilize the TxDOT standard long-span MBGF to clear the conflicts. This solution has been agreed to by TxDOT Georgetown Area Office.


Work to be performed in accordance with Items: See attached

New or revised plan sheet(s) are attached and numbered: 194, 195 and GF (31) LS - 17


New Special Provisions/Specifications to the contract are attached: ☐ Yes ☒ No

New Special Provisions to Item N/A No. N/A. Special Specification Item N/A are attached.

Each signatory hereby warrants that each has the authority to execute this Change Order (CO).

<p><small>The contractor must sign the Change Order and, by doing so, agrees to waive any and all claims for additional compensation due to any and all other expenses; additional changes for time, overhead and profit; or loss of compensation as a result of this change.</small></p> <p>THE CONTRACTOR Date 12-3-24</p> <p>By </p> <p>Typed/Printed Name Joey Williams</p> <p>Typed/Printed Title Division Manager</p>	<p><b>The following information must be provided</b></p> <p>Time Ext. #: N/A Days added on this CO: 0</p> <p>Amount added by this change order: \$5,462.50</p> <hr/> <p>Original Contract Amount: \$81,941,038.13</p> <p>Total Change Orders To-Date: \$2,335,980.09</p> <p>Percent Change in Original Contract: 2.85%</p>
--	--


RECOMMENDED FOR EXECUTION:

 12/4/2024  
Senior Construction Engineer Date


 12/6/2024  
Program Manager Date

N/A  
3rd Party Signature Date

RECOMMENDED FOR EXECUTION:

 12/6/2024  
Department of Infrastructure Date  
Williamson County

APPROVED:

 Dec 19, 2024  
Presiding Officer of the Date  
Williamson County Commissioners Court

**WILLIAMSON COUNTY, TEXAS**

**CHANGE ORDER NUMBER: 21**

Project # 22IFB139

**TABLE A: Force Account Work and Materials Placed into Stock**[illegible]**TABLE B: Contract Items:**

				ORIGINAL + PREVIOUSLY REVISED		ADD or (DEDUCT)	NEW		
ITEM	DESCRIPTION	UNIT	UNIT PRICE	QUANTITY	ITEM COST	QUANTITY	QUANTITY	ITEM COST	OVERRUN/ UNDERRUN
540 6001	MTL W-BEAM GD FEN (TIM POST)	LF	\$21.53	1,670.00	\$35,955.10	(150.00)	1,520.00	\$32,725.60	(\$3,229.50)
540 6017	MTL W-BEAM GD FEN (Long Span System)	LF	\$44.52	0.00	\$0.00	100.00	100.00	\$4,452.00	\$4,452.00
540 6020	MTL BM W- Beam GD Fence (Low Fill Culvert)	LF	\$84.80	0.00	\$0.00	50.00	50.00	\$4,240.00	\$4,240.00
	TOTALS				\$35,955.10			\$41,417.60	\$5,462.50

**Williamson County Road Bond Program**

**FM3349 at US 79  
Williamson County Project No. 22IFB139**

**Change Order No. 21**

**Reason for Change**

This Change Order compensates the Contractor for installing long-span metal beam guard fence in the project. At several locations on south bound frontage road (SBFR), the backless concrete inlets conflict with the location of the wooden posts supporting the metal beam guard fence (MBGF) runs. These conflicts were reviewed by the Engineer of Record, and it was recommended to utilize the TxDOT standard long-span MBGF to clear the conflicts. This solution has been agreed to by TxDOT.

Following is summary of new items required for this Change Order.

ITEM	DESCRIPTION	QTY	UNIT
540 6017	MTL W-BEAM GD FEN (Long Span System)	100	LF
540 6020	MTL BM W- Beam GD Fence (Low Fill Culvert)	50	LF

This Change Order results in a net increase of \$5,462.50 to the Contract amount, for an adjusted Contract total of \$84,277,018.22. The original Contract amount was \$81,941,038.13. As a result of this and all Change Orders to-date, \$2,335,980.09 has been added to the Contract, resulting in an 2.85% net increase in the Contract cost. No additional days will be added to or deducted from the Contract as a result of this Change Order.

**HNTB Corporation**

Oscar Salazar-Bueno, P.E.

# Change Order Worksheet

**Contract Name** FM3349 at US79 **Solicitation #** 22IFB139

**Date awarded** 9/13/2022

**Awarded Contract Amount** \$81,941,038.13

		Percentage Change
Change order #1	\$925,354.41	1.13%
Change order #2	\$82,000.00	0.10%
Change order #3	\$195,302.81	0.24%
Change order #4	-\$472,492.20	-0.58%
Change order #5	-\$5,274.97	-0.01%
Change order #6	\$130,053.00	0.16%
Change order #7	\$661,031.30	0.81%
Change order #8	\$327,321.48	0.40%
Change order #9	-\$368,749.53	-0.45%
Change order #10	\$67,965.30	0.08%
Change order #11	\$271,902.72	0.33%
Change order #12	\$64,791.00	0.08%
Change order #13	\$82,301.65	0.10%
Change order #14	\$101,248.22	0.12%
Change order #15	\$24,513.18	0.03%
Change order #16	\$35,324.07	0.04%
Change order #17	\$11,849.07	0.01%
Change order #18	\$18,623.43	0.02%
Change order #19	\$9,869.00	0.01%
Change order #20	\$167,583.65	0.20%
Change order #21	\$5,462.50	0.01%

<b>Total changes to date</b>	<u>\$2,335,980.09</u>	<u>2.85%</u>	(Running totals here)
<b>Adjusted contract amount</b>	\$84,277,018.22		

## CHANGE ORDER REASON(S) CODE CHART

1. Design Error or Omission	1A. Incorrect PS&E 1B. Other
2. Differing Site Conditions (unforeseeable)	2A. Dispute resolution (expense caused by conditions and/or resulting delay) 2B. Unavailable material 2C. New development (conditions changing after PS&E completed) 2D. Environmental remediation 2E. Miscellaneous difference in site conditions (unforeseeable)(Item 9) 2F. Site conditions altered by an act of nature 2G. Unadjusted utility (unforeseeable) 2H. Unacquired Right-of-Way (unforeseeable) 2I. Additional safety needs (unforeseeable) 2J. Other
3. County Convenience	3A. Dispute resolution (not resulting from error in plans or differing site conditions) 3B. Public relations improvement 3C. Implementation of a Value Engineering finding 3D. Achievement of an early project completion 3E. Reduction of future maintenance 3F. Additional work desired by the County 3G. Compliance requirements of new laws and/or policies 3H. Cost savings opportunity discovered during construction 3I. Implementation of improved technology or better process 3J. Price adjustment on finished work (price reduced in exchange for acceptance) 3K. Addition of stock account or material supplied by state provision 3L. Revising safety work/measures desired by the County 3M. Other
4. Third Party Accommodation	4A. Failure of a third party to meet commitment 4B. Third party requested work 4C. Compliance requirements of new laws and/or policies (impacting third party) 4D. Other
5. Contractor Convenience	5A. Contractor exercises option to change the traffic control plan 5B. Contractor requested change in the sequence and/or method of work 5C. Payment for Partnering workshop 5D. Additional safety work/measures desired by the contractor 5E. Other
6. Untimely ROW/Utilities	6A. Right-of-Way not clear (third party responsibility for ROW) 6B. Right-of-Way not clear (County responsibility for ROW) 6C. Utilities not clear 6D. Other

## CHANGE ORDER PROPOSAL

**Date:** 10/28/2024

**CO#21 - ESSI MBGF LOW FILL & LONG SPAN**



**Invoice #**

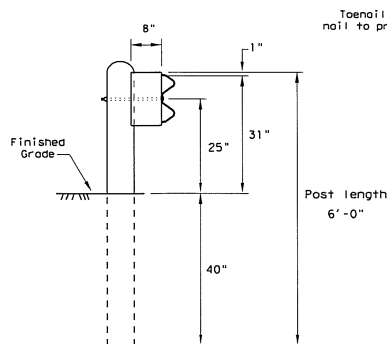
**Bill To:**  
HNTB- WILLIAMSON COUNTY

**RE:**  
Wilco FM3349 @ US-79  
ASIF MIRZAZADA  
CSJ: 3486-01-008  
Project # 20221115

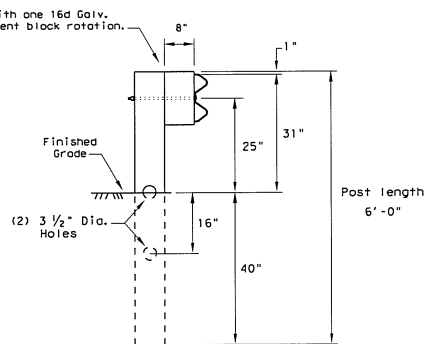
Qty	UM	Description	Unit Price	Total
50.00	LF	MTL BEAM GD FEN (LOW FILL CULVERT) (540-6020)	\$84.80	<b>\$4,240.00</b>
100.00	LF	MTL BM GD FEN (LONG SPAN SYSTEM) (540-6017)	\$44.52	<b>\$4,452.00</b>
(150.00)	LF	MTL BEAM GD FENCE (TIM POST) (540-6001)	\$21.53	<b>(\$3,229.50)</b>
PREPARED BY: GARY COUCH				
			<b>Total</b>	<b>\$5,462.50</b>

DISCLAIMER: The use of this standard is governed by the "Texas Engineering Practice Act". No warranty of any kind is made by TxDOT for any purpose whatsoever. TxDOT assumes no responsibility for the conversion of this standard to other formats or for incorrect results or damages resulting from its use.

DATE: FILE:

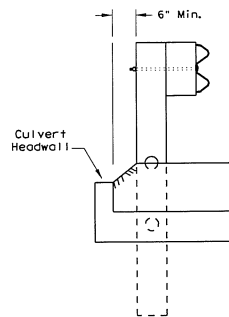


Standard Line Post Installation



Rectangular CRT Post  
(6" x 8" x 6" Long)

(6) CRT required.  
See Elevation Detail for locations.

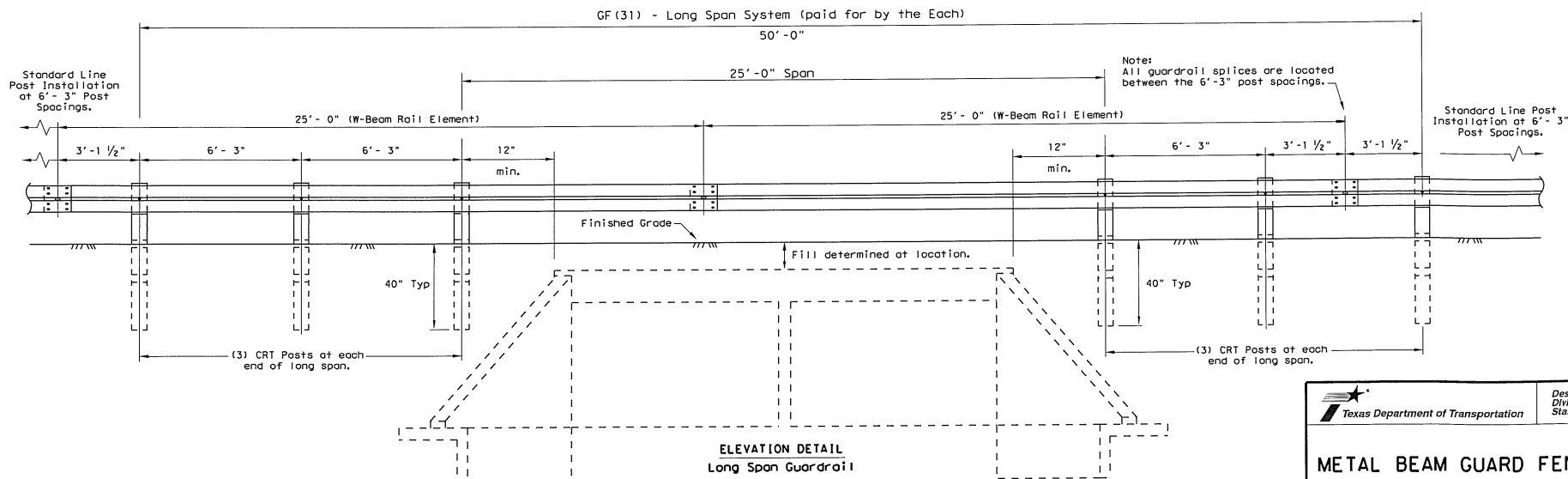


Lateral Offset Between the  
Guardrail and the Culvert Headwall

## GENERAL NOTES

- The type of line post (round wood post, rectangular wood post, or steel post) will be as shown in the plans. The exact position of the transitions shall be as shown in the plans or as directed by the Engineer. Steel posts to be galvanized in accordance with Item 445, "Galvanizing".
- Rail element shall meet all requirements of Item 540, "Metal Beam Guard Fence" except as modified on the plans. The Contractor may furnish rail elements of 12 1/2 or 25 foot nominal lengths.
- Rail post holes are offset 3' - 1 1/2" from standard guardrail to accommodate the midspan splicing.
- Button head post bolts (ASTM A307) shall be of sufficient length to extend through the full thickness of the nut (ASTM A563) and no more than 3/4" beyond it. Button head splice bolts (ASTM A307) are 5/8" x 1 1/4" with a 5/8" double recessed nut (ASTM A563). Galvanized fittings (bolts, nuts, and washers) shall be in accordance with Item, "Metal For Structures". Fittings shall be subsidiary to the bid item requiring construction of transition.
- Where solid rock is encountered or where shown on the plans, the diameter of the holes shall be approximately 12 inches, the backfilling shall be with a cohesionless material, and embedment depth shall be 1' - 6' or more as directed by the Engineer.
- Posts shall not be set in concrete, of any depth.
- Refer to GF(31) Standard Sheet for additional details.

NOTE: Field drilled holes shall be repaired in accordance with Item 445, "Galvanizing". Flame cutting of holes in guardrail shall not be permitted.



ELEVATION DETAIL  
Long Span Guardrail

		Design Division Standard	
<b>METAL BEAM GUARD FENCE (LONG SPAN)</b>			
<b>GF (31) LS-17</b>			
FILE: gf31ls17.dgn © TxDOT: December 2011 Revised 12, 2017 CL	Dwn TxDOT CONT SECT DIST	Ckn KM JOB COUNTY	Dwn VP HIGHWAY SHEET NO.