

WORK AUTHORIZATION NO. 3
PROJECT: Honeysuckle Ln, Prairie Ln, Verbena Way PS&E Package

This Work Authorization is made pursuant to the terms and conditions of the Williamson County Contract for Engineering Services, being dated **June 14, 2022** and entered into by and between Williamson County, Texas, a political subdivision of the State of Texas, (the "County") and **Alliance Transportation Group, LLC** (the "Engineer").

Part 1. The Engineer will provide the following Engineering Services set forth in Attachment "B" of this Work Authorization.

Part 2. The maximum amount payable for services under this Work Authorization without modification is **\$88,000.00**.

Part 3. Payment to the Engineer for the services established under this Work Authorization shall be made in accordance with the Contract.

Part 4. This Work Authorization shall become effective on the date of final acceptance and full execution of the parties hereto and shall terminate on **March 31, 2026**. The Engineering Services set forth in Attachment "B" of this Work Authorization shall be fully completed on or before said date unless extended by a Supplemental Work Authorization.

Part 5. This Work Authorization does not waive the parties' responsibilities and obligations provided under the Contract.

Part 6. County believes it has sufficient funds currently available and authorized for expenditure to finance the costs of this Work Authorization. Engineer understands and agrees that County's payment of amounts under this Work Authorization is contingent on the County receiving appropriations or other expenditure authority sufficient to allow the County, in the exercise of reasonable administrative discretion, to continue to make payments under this Contract. It is further understood and agreed by Engineer that County shall have the right to terminate this Contract at the end of any County fiscal year if the governing body of County does not appropriate sufficient funds as determined by County's budget for the fiscal year in question. County may effect such termination by giving written notice of termination to Engineer.

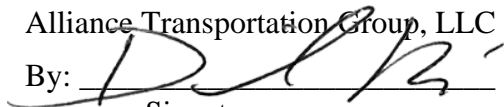
Part 7. This Work Authorization is hereby accepted and acknowledged below.

Continued next page

EXECUTED this _____.

ENGINEER:

Alliance Transportation Group, LLC

By: 
Signature

Daniel Rios

Printed Name

Chief Information Officer

Title

COUNTY:

Williamson County, Texas

By: _____
Signature

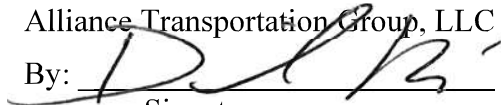
Printed Name

Title

EXECUTED this 04/08/2025.

ENGINEER:

Alliance Transportation Group, LLC

By: 
Signature

Daniel Rios


Printed Name

Chief Information Officer

Title

COUNTY:

Williamson County, Texas

By: 
Signature

Valerie Covey

Printed Name

Presiding Officer

Title

LIST OF ATTACHMENTS

Attachment A - Services to be Provided by County

Attachment B - Services to be Provided by Engineer

Attachment C - Work Schedule

Attachment D - Fee Schedule

ATTACHMENT A
SERVICES TO BE PROVIDED BY THE COUNTY
FOR WA03 Honeysuckle Ln, Prairie Ln, Verbena Way PS&E

In general, Williamson County and its representatives to their best efforts will render services as follows:

1. Provide available appropriate County data on file including plans and specifications that are deemed pertinent to the completion of the work required by the scope of services (including topographic survey, R.O.W Surveys, geotechnical investigations; data and reports).
2. Provide available criteria and full information as to the client's requirements for the project. Provide project direction, review, and oversight to ensure compliance with County goals and requirements.
3. Provide information on any meetings/discussions held with adjoining property owners that may impact the project.
4. Provide timely reviews and decisions necessary for the Engineer to maintain the project work schedule. Review recommendations offered by the Engineer, progress of work, and final acceptance of all documents.
5. Support project development efforts with stakeholders, coordinate meetings and interface with stakeholders, as needed.
6. Post and maintain project information for public consumption on the County website.
7. Assist with Coordination between the Engineer and the County's other consultants.
8. Review Engineer progress, submittals, and plan changes.
9. Conduct pre-bid meetings, respond to contractor questions during bidding, tabulate and evaluate bids after bid opening, and provide recommendations for the award of the contract.
10. Provide construction oversight, administration, and management to ensure the project is executed in accordance with approved plans and specifications.

ATTACHMENT B
SERVICES TO BE PROVIDED BY THE ENGINEER
WA03 Honeysuckle Ln, Prairie Ln, Verbena Way PS&E Package

The project involves the rehabilitation of an existing roadway by removing deteriorated pavement materials, failed curb and gutter and sidewalk, and reconstructing the pavement structure using stabilization, multiple paving layers, curb and gutter, and sidewalk. The Engineer shall prepare a **Plans, Specifications, and Estimate (PS&E) package** for the project. The key construction activities include removing the existing roadway material, failed curb and gutter and sidewalk, lime stabilizing 8" subgrade material with 6% lime slurry, installing geogrid; adding 11" new flex base material, applying prime coat, applying one course seal coat adding 4" HMAC TY B, adding 2" HMAC TY D, installing curb and gutter and sidewalk.



Figure 1: Project Location

Task 1: Project Management

Attend Progress Review Meetings with County Road & Bridge Division at 90%, 100%, and Final.
Prepare monthly progress reports and invoices. Maintain project schedule and perform QA/QC.

ATTACHMENT B
SERVICES TO BE PROVIDED BY THE ENGINEER
WA03 Honeysuckle Ln, Prairie Ln, Verbena Way PS&E Package

Task 2: Topographic and R.O.W Surveys
To be provided by the County

Task 3: Preliminary Engineering
Conduct Site Visit, Field Reconnaissance, and existing project data collection to document existing conditions.

Task 4: Geotechnical Investigations
To be provided by the County

Task 5: Environmental Studies
N/A

Task 6: Utility Coordination
To be provided by others

Task 7: FEMA Coordination
N/A

Task 8: Final Engineering
Prepare final detailed design and PS&E for proposed improvements.

Plan Sheets:

- Title Sheet / Index of Sheets
- Estimate & Quantity Sheet
- Project Layout (1" =100')
- Typical Sections
- Horizontal Alignment Data Sheet
- Erosion Control Plan (1" =50')
- Roadway Plan & Profile (1" =50')
- Driveway Details
- Traffic Control Plan Narrative
- Detour Layout
- Traffic Control Plan
- Cross Sections (50' Interval and Driveways)
- Standards

Specifications
Cost Estimate
General Notes

ATTACHMENT B
SERVICES TO BE PROVIDED BY THE ENGINEER
WA03 Honeysuckle Ln, Prairie Ln, Verbena Way PS&E Package

Task 9: Bidding Phase Services

N/A

Task 10: Construction Phase Services

Review shop drawings and respond to contractor RFIs. Prepare electronic as-builts final drawings for the County based on construction red-lines provided by the County.

Deliverables:

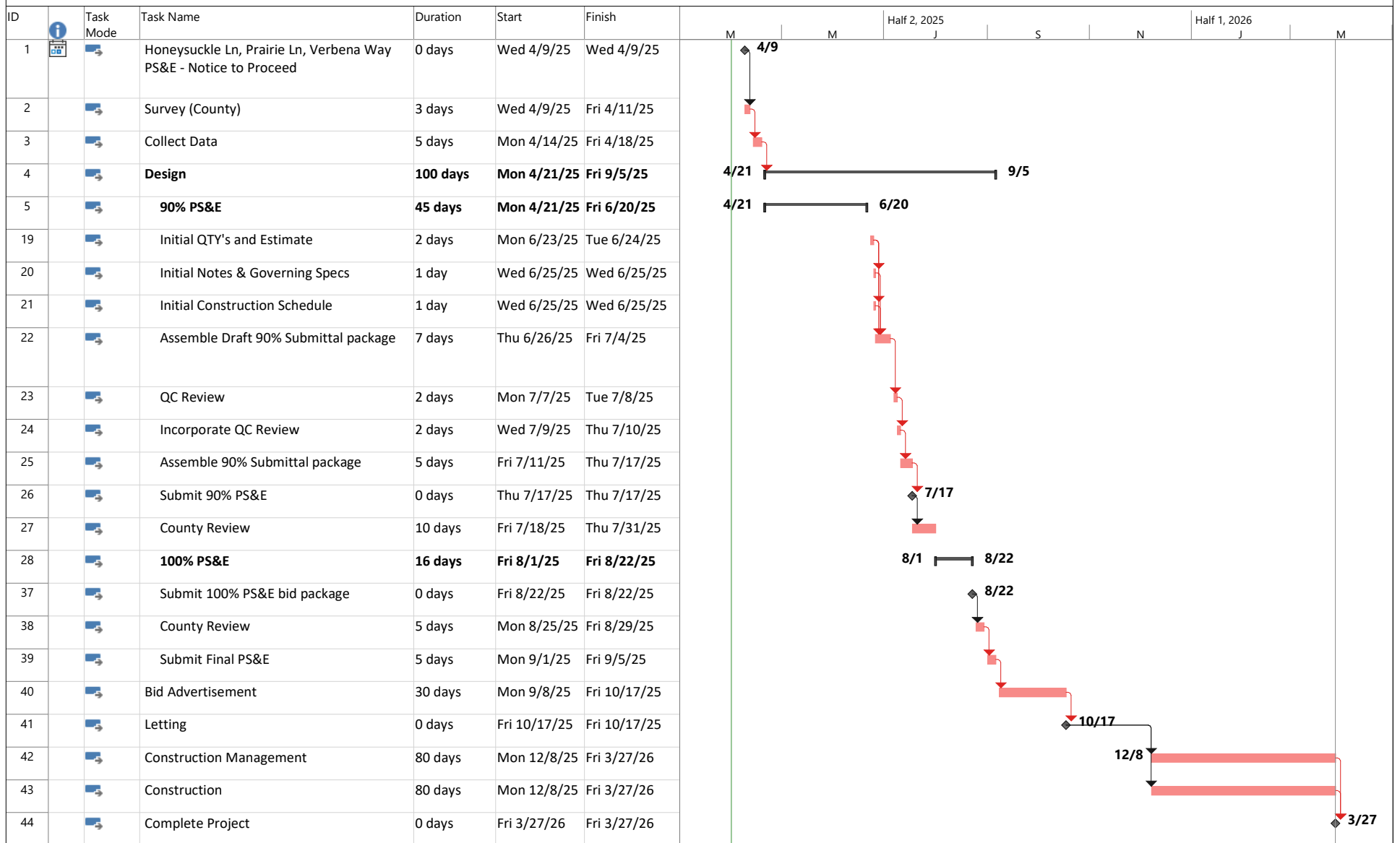
90% Submittal:

- 11" x 17" Plan Set in PDF Format
- Estimate of Construction Cost in Excel Format
- Governing Specifications and General Notes in Word format
- Engineer's internal QA/QC marked up set

Final Submittal:

- 11" x 17" Plan Set in PDF Format
- Estimate of Construction Cost in Excel Format
- Governing Specifications and General Notes in Word format
- Engineer's internal QA/QC marked up set
- Electronic copy of CAD/OpenRoads files

Attachment C



Project: Honeysuckle Ln, Prairie Ln, Verbena Way PS&E - Notice	Task		Inactive Milestone		Start-only		Critical Split	
	Split		Inactive Summary		Finish-only		Progress	
	Milestone		Manual Task		External Tasks		Manual Progress	
	Summary		Duration-only		External Milestone			
	Project Summary		Manual Summary Rollup		Deadline			
	Inactive Task		Manual Summary		Critical			

Task Description	No. of Sheets	Project Principal	Senior Project Manager	Project Manager	Traffic Engineer	Senior Engineer	Project Engineer	Engineer -In- Training	Senior Engineering Technician	Engineering Technician	Project Administrator	Clerical	Total Labor Hours & Costs
Task 1: Project Management													
Progress Review Meetings (3 meetings: Kickoff, 90% and Final)		1		6		3	4					4	18
Invoicing and Progress Reports (9 months)				7		5	7				7		26
Subconsultants													0
QA/QC of Deliverables at 90% and Final		2				12	10						24
Labor Hours Subtotal		3	0	13	0	20	21	0	0	0	7	4	68
Contract Labor Rate Per Hour		\$ 305.00	\$ 285.00	\$ 257.00	\$ 175.00	\$ 245.00	\$ 200.00	\$ 127.00	\$ 153.00	\$ 111.00	\$ 127.00	\$ 89.00	
Labor Costs Subtotal		\$ 915.00	\$ -	\$ 3,341.00	\$ -	\$ 4,900.00	\$ 4,200.00	\$ -	\$ -	\$ -	\$ 889.00	\$ 356.00	\$ 14,601.00

Task Description	No. of Sheets	Project Principal	Senior Project Manager	Project Manager	Traffic Engineer	Senior Engineer	Project Engineer	Engineer -In- Training	Senior Engineering Technician	Engineering Technician	Project Administrator	Clerical	Total Labor Hours & Costs
Task 2: Topographic and R.O.W. Surveys													
To be provided by the County													0
Labor Hours Subtotal		0	0	0	0	0	0	0	0	0	0	0	0
Contract Labor Rate Per Hour		\$ 305.00	\$ 285.00	\$ 257.00	\$ 175.00	\$ 245.00	\$ 200.00	\$ 127.00	\$ 153.00	\$ 111.00	\$ 127.00	\$ 89.00	
Labor Costs Subtotal		\$ -	\$ -	\$ -	\$ -	\$ -	\$ -	\$ -	\$ -	\$ -	\$ -	\$ -	\$ -

Task Description	No. of Sheets	Project Principal	Senior Project Manager	Project Manager	Traffic Engineer	Senior Engineer	Project Engineer	Engineer -In- Training	Senior Engineering Technician	Engineering Technician	Project Administrator	Clerical	Total Labor Hours & Costs
Task 3: Preliminary Engineering													
Site Visit & Field Recon						2	2	2					6
Data Collection						4	4	4					12
Labor Hours Subtotal		0	0	0	0	6	6	6	0	0	0	0	18
Contract Labor Rate Per Hour		\$ 305.00	\$ 285.00	\$ 257.00	\$ 175.00	\$ 245.00	\$ 200.00	\$ 127.00	\$ 153.00	\$ 111.00	\$ 127.00	\$ 89.00	
Labor Costs Subtotal		\$ -	\$ -	\$ -	\$ -	\$ 1,470.00	\$ 1,200.00	\$ 762.00	\$ -	\$ -	\$ -	\$ -	\$ 3,432.00

Task Description	No. of Sheets	Project Principal	Senior Project Manager	Project Manager	Traffic Engineer	Senior Engineer	Project Engineer	Engineer -In- Training	Senior Engineering Technician	Engineering Technician	Project Administrator	Clerical	Total Labor Hours & Costs
Task 4: Geotechnical Investigation													
To be provided by the County													0
Labor Hours Subtotal		0	0	0	0	0	0	0	0	0	0	0	0
Contract Labor Rate Per Hour		\$ 305.00	\$ 285.00	\$ 257.00	\$ 175.00	\$ 245.00	\$ 200.00	\$ 127.00	\$ 153.00	\$ 111.00	\$ 127.00	\$ 89.00	
Labor Costs Subtotal		\$ -	\$ -	\$ -	\$ -	\$ -	\$ -	\$ -	\$ -	\$ -	\$ -	\$ -	\$ -

Task Description	No. of Sheets	Project Principal	Senior Project Manager	Project Manager	Traffic Engineer	Senior Engineer	Project Engineer	Engineer -In- Training	Senior Engineering Technician	Engineering Technician	Project Administrator	Clerical	Total Labor Hours & Costs
Task 5: Environmental Studies													
N/A													0
Labor Hours Subtotal		0	0	0	0	0	0	0	0	0	0	0	0
Contract Labor Rate Per Hour		\$ 305.00	\$ 285.00	\$ 257.00	\$ 175.00	\$ 245.00	\$ 200.00	\$ 127.00	\$ 153.00	\$ 111.00	\$ 127.00	\$ 89.00	
Labor Costs Subtotal		\$ -	\$ -	\$ -	\$ -	\$ -	\$ -	\$ -	\$ -	\$ -	\$ -	\$ -	\$ -

Task Description	No. of Sheets	Project Principal	Senior Project Manager	Project Manager	Traffic Engineer	Senior Engineer	Project Engineer	Engineer -In- Training	Senior Engineering Technician	Engineering Technician	Project Administrator	Clerical	Total Labor Hours & Costs
Task 6: Utility Coordination													
To be provided by others													0
Labor Hours Subtotal		0	0	0	0	0	0	0	0	0	0	0	0
Contract Labor Rate Per Hour		\$ 305.00	\$ 285.00	\$ 257.00	\$ 175.00	\$ 245.00	\$ 200.00	\$ 127.00	\$ 153.00	\$ 111.00	\$ 127.00	\$ 89.00	
Labor Costs Subtotal		\$ -	\$ -	\$ -	\$ -	\$ -	\$ -	\$ -	\$ -	\$ -	\$ -	\$ -	\$ -

Task Description	No. of Sheets	Project Principal	Senior Project Manager	Project Manager	Traffic Engineer	Senior Engineer	Project Engineer	Engineer -In- Training	Senior Engineering Technician	Engineering Technician	Project Administrator	Clerical	Total Labor Hours & Costs
Task 7: FEMA Coordination													
N/A													0
Labor Hours Subtotal		0	0	0	0	0	0	0	0	0	0	0	0
Contract Labor Rate Per Hour		\$ 305.00	\$ 285.00	\$ 257.00	\$ 175.00	\$ 245.00	\$ 200.00	\$ 127.00	\$ 153.00	\$ 111.00	\$ 127.00	\$ 89.00	
Labor Costs Subtotal		\$ -	\$ -	\$ -	\$ -	\$ -	\$ -	\$ -	\$ -	\$ -	\$ -	\$ -	\$ -

Task Description	No. of Sheets	Project Principal	Senior Project Manager	Project Manager	Traffic Engineer	Senior Engineer	Project Engineer	Engineer -In- Training	Senior Engineering Technician	Engineering Technician	Project Administrator	Clerical	Total Labor Hours & Costs
Task 8: Final Engineering													
Title Sheet / Index of Sheets	1					1	2	8					11
Estimate and Quantity Sheet	1					1	2	4					7
Project Layout Plan sheets (1"=100')	1					1	4	8					13
Typical Sections	1					2	4	12					18
Horizontal Alignment Data Sheet	1					1	1	2					4
Erosion Control Plan (1"=50')	3					2	4	24					30
Roadway Plan & Profile (1"=50')	3					2	4	24					30
Driveway Details	1					2	4	24					30
Traffic Control Plan Narrative	3					1	2	8					11
Detour Layout	3					2	2	18					22
Traffic Control Plan	3					2	4	40					46
Cross Sections (50' Interval and Driveways)													
3D MODEL				4			8	40					52
Cross Sections Sheets	6			4		4	8	24					40
Standards	26			1		1	2	4					8
Cost Estimate				2		2	8	24					36
Governing Specifications & General Notes				2		2	2	4					10
Construction Schedule				2			4						6
Assemble & Submit 90% Plans				2		2	2	12					18
Assemble & Submit 100% Plans				2		2	2	12					18
Labor Hours Subtotal		0	0	19	0	30	69	292	0	0	0	0	410
Contract Labor Rate Per Hour		\$ 305.00	\$ 285.00	\$ 257.00	\$ 175.00	\$ 245.00	\$ 200.00	\$ 127.00	\$ 153.00	\$ 111.00	\$ 127.00	\$ 89.00	
Labor Costs Subtotal		\$ -	\$ -	\$ 4,883.00	\$ -	\$ 7,350.00	\$ 13,800.00	\$ 37,084.00	\$ -	\$ -	\$ -	\$ -	\$ 63,117.00

Task Description	No. of Sheets	Project Principal	Senior Project Manager	Project Manager	Traffic Engineer	Senior Engineer	Project Engineer	Engineer -In- Training	Senior Engineering Technician	Engineering Technician	Project Administrator	Clerical	Total Labor Hours & Costs
Task 9: Bidding Phase Services													
N/A													0
Labor Hours Subtotal		0	0	0	0	0	0	0	0	0	0	0	0
Contract Labor Rate Per Hour		\$ 305.00	\$ 285.00	\$ 257.00	\$ 175.00	\$ 245.00	\$ 200.00	\$ 127.00	\$ 153.00	\$ 111.00	\$ 127.00	\$ 89.00	
Labor Costs Subtotal		\$ -	\$ -	\$ -	\$ -	\$ -	\$ -	\$ -	\$ -	\$ -	\$ -	\$ -	\$ -

Task Description	No. of Sheets	Project Principal	Senior Project Manager	Project Manager	Traffic Engineer	Senior Engineer	Project Engineer	Engineer -In- Training	Senior Engineering Technician	Engineering Technician	Project Administrator	Clerical	Total Labor Hours & Costs
Task 10: Construction Phase Services													
10.1 Review Shop Drawings and RFIs (Assume 2 RFIs)						2	8	8					18
10.2 OMITTED													0
10.3 Project closout, As-Built and submittal of electronic files						2	4	4					10
Labor Hours Subtotal		0	0	0	0	4	12	12	0	0	0	0	28
Contract Labor Rate Per Hour		\$ 305.00	\$ 285.00	\$ 257.00	\$ 175.00	\$ 245.00	\$ 200.00	\$ 127.00	\$ 153.00	\$ 111.00	\$ 127.00	\$ 89.00	
Labor Costs Subtotal		\$ -	\$ -	\$ -	\$ -	\$ 980.00	\$ 2,400.00	\$ 1,524.00	\$ -	\$ -	\$ -	\$ -	\$ 4,904.00

DESCRIPTION												TOTAL MH BY TASK	TOTAL COST BY TASK
Task 1: Project Management												68	\$ 14,601.00
Task 2: Topographic and R.O.W. Surveys												0	\$ -
Task 3: Preliminary Engineering												18	\$ 3,432.00
Task 4: Geotechnical Investigation												0	\$ -
Task 5: Environmental Studies												0	\$ -
Task 6: Utility Coordination												0	\$ -
Task 7: FEMA Coordination												0	\$ -
Task 8: Final Engineering												410	\$ 63,117.00
Task 9: Bidding Phase Services												0	\$ -
Task 10: Construction Phase Services												28	\$ 4,904.00
SUBTOTAL LABOR COST												524	\$ 86,054.00

DIRECT EXPENSES

Description	Unit	Cost/Unit	Quantity	Total Cost
Mileage	mile	\$ 0.655	250	\$ 163.75
Standard Postage - Letter	each	\$ 0.58		\$ -
Certified Letter Return Receipt	each	\$ 7.38		\$ -
Overnight Mail - Letter Size	each	\$ 26.35		\$ -
Overnight Mail - Oversized Box	each	\$ 30.00		\$ -
Courier Services	each	\$ 75.00	2	\$ 150.00
Photocopies B/W (8 1/2" x 11")	each	\$ 0.15		\$ -
Photocopies B/W (11" x 17")	each	\$ 0.20	215	\$ 43.00
Photocopies Color (8 1/2" x 11")	each	\$ 0.75		\$ -
Photocopies Color (11" x 17")	each	\$ 1.75	215	\$ 376.25
Plots (B/W on Bond)	square foot	\$ 6.00		\$ -
Plots (Color on Bond)	square foot	\$ 8.00		\$ -
CDs	each	\$ 0.50		\$ -
SUBTOTAL DIRECT EXPENSES				\$ 733.00

SUMMARY		
SUBTOTAL LABOR COST		\$ 86,054.00
SUBTOTAL DIRECT EXPENSE		\$ 733.00
TOTAL		\$ 86,787.00