

**SUPPLEMENTAL WORK AUTHORIZATION NO. 2**  
**TO**  
**WORK AUTHORIZATION NO. 3**

**WILLIAMSON COUNTY ROAD BOND PROJECT:**  
**Seward Junction Loop North**

This Supplemental Work Authorization No. 2 to Work Authorization No. 3 is made pursuant to the terms and conditions of the Williamson County Contract for Engineering Services, being dated September 29<sup>th</sup>, 2022 ("Contract") and entered into by and between Williamson County, Texas, a political subdivision of the State of Texas, (the "County") and LJA Engineering (the "Engineer").

WHEREAS, the County and the Engineer executed Work Authorization No. 3 dated effective May 3<sup>rd</sup>, 2024 (the "Work Authorization");

WHEREAS, pursuant to Article 14 of the Contract, amendments, changes and modifications to a fully executed Work Authorization shall be made in the form of a Supplemental Work Authorization; and

WHEREAS, it has become necessary to amend, change and modify the Work Authorization.

**AGREEMENT**

NOW, THEREFORE, premises considered, the County and the Engineer agree that the Work Authorization shall be amended, changed and modified as follows:

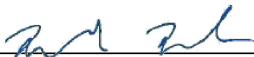
- I. The Services to be Provided by the Engineer that were set out in the original Attachment "B" of the Work Authorization are hereby amended, changed and modified as shown in the attached revised Attachment "B" (must be attached).
- II. The Work Authorization shall terminate on December 31<sup>st</sup>, 2025. The Services to be Provided by the Engineer shall be fully completed on or before said date unless extended by an additional Supplemental Work Authorization. The revised Work Schedule is attached hereto as Attachment "C" (must be attached).
- III. The maximum amount payable for services under the Work Authorization is hereby increased by \$ 36,176.00 from \$ 1,218,564.36 to \$ 1,254,740.36. The revised Fee Schedule is attached hereto as Attachment "D" (must be attached).

Except as otherwise amended by prior or future Supplemental Work Authorizations, all other terms of the Work Authorization are unchanged and will remain in full force and effect.

This Supplemental Work Authorization does not waive the parties' responsibilities and obligations provided under the Contract.

**IN WITNESS WHEREOF**, the County and the Engineer have executed this Supplemental Work Authorization, to be effective as of the date of the last party's execution below.

**ENGINEER:**


By:   
Signature

Derek Bohls, PE  
Printed Name

Vice President  
Title

4/4/2025  
Date

**COUNTY:**

By:   
Signature

Steven Snell  
Printed Name

County Judge  
Title

04/30/2025  
Date

**LIST OF ATTACHMENTS**

Attachment B - Services to be Provided by Engineer

Attachment C - Work Schedule

Attachment D - Fee Schedule

**APPROVED**

*By Christen Eschberger at 2:16 pm, Apr 16, 2025*

**ATTACHMENT B**  
**SERVICES TO BE PROVIDED BY THE ENGINEER FOR**  
**SEWARD JUNCTION LOOP NORTH (100% PS&E)**

**PROJECT DESCRIPTION**

This Supplemental Work Authorization is to separate the Seward Junction Loop North PS&E project into two separate packages, east and west of US 183.

**1. PROJECT MANAGEMENT**

a. Quality Assurance and Quality Control (QA/QC):

- For each deliverable submittal, provide evidence of their internal review and mark-up of that deliverable as preparation for submittal and in accordance with submitted project specific QA/QC plan.

b. Project Coordination & Administration:

- Correspondence and coordination will be handled through & with the concurrence of the GEC.
- Manage Project activities (including documenting emails, phone and conference calls, maintain project files for the length of the project, meeting agendas, meeting minutes, and schedule meetings), direct Engineer's team/staff, coordinate and review sub-consultant work, correspond with the County and its representatives, and assist the County and its representatives in preparing responses to Project-related inquiries.

c. PROJECT DESIGN SCHEDULE:

- Submit a revised project design schedule based on project changes.

**Deliverables:**

- Project Schedule and Updates
- QA/QC Documentation with Deliverable

**4. PLAN PREPARATION (PS&E) SERVICES**

Separate the plans, specifications, and estimate into two separate submittals (east and west of US 183) for 100% Final Design.

a. Roadway/General:

- Revise sheets as necessary for the project split.

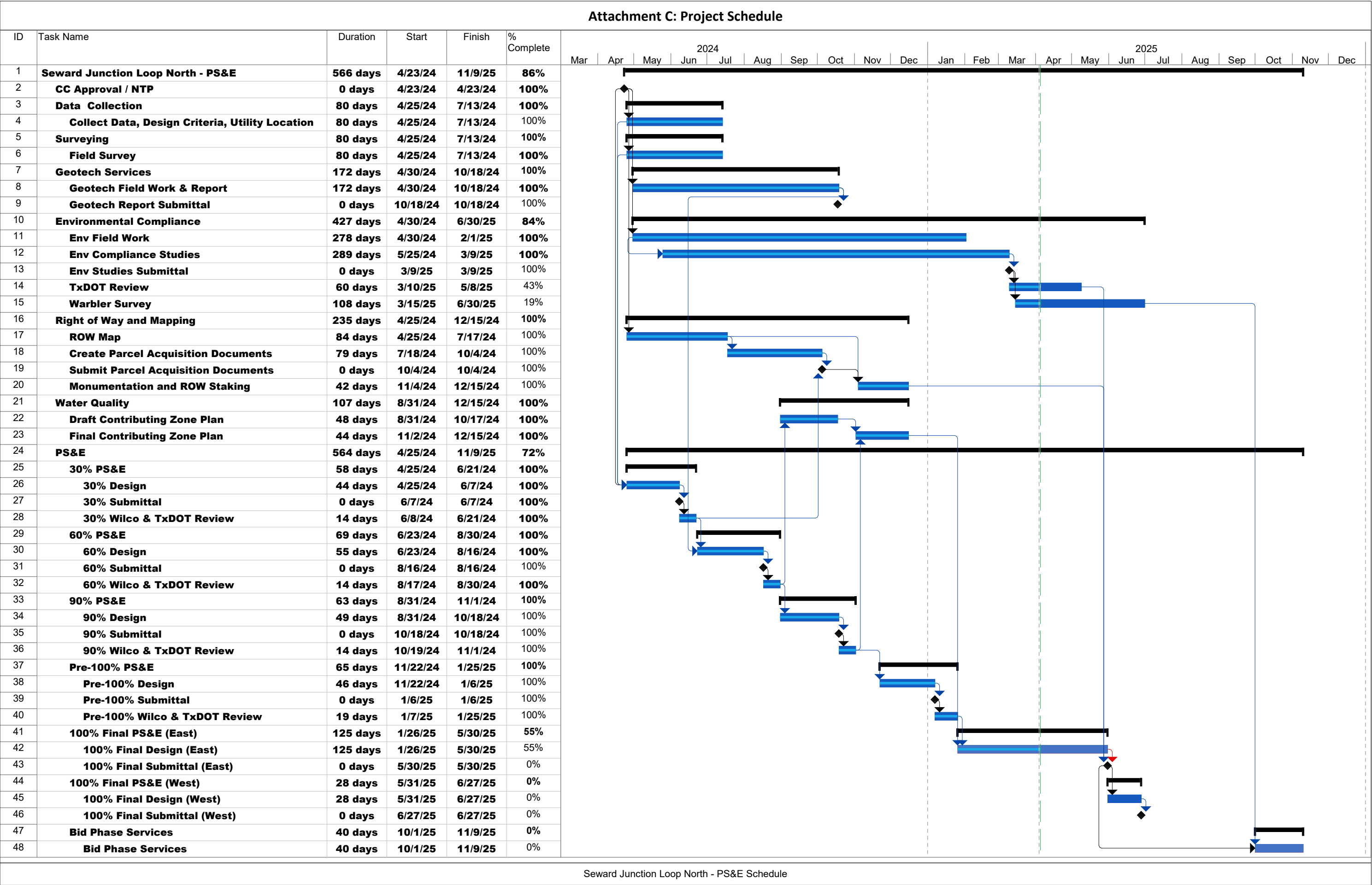
b. Traffic Control:

- Revise sheets as necessary for the project split.

- c. Drainage:
  - Revise sheets as necessary for the project split.
- d. Signing and Pavement Markings Layouts:
  - Revise sheets as necessary for the project split.
- e. Traffic Signal Design/Modification (SH29&CR213, SH29&CR260, US183&CR213/CR258):
  - Revise sheets as necessary for the project split.

**Deliverables:**

- 100% & Final PS&E Submittals (east and west)



LJA Engineering

Seward Junction Loop North PS&E - SWA 2 to WA3 - PS&E													
TASK DESCRIPTION		Project Principal	Project Manager	Quality Manager	Senior Engineer	Project Engineer	Design Engineer	E.I.T.	Senion Engineering Technician	Senior CADD Operator	CADD Operator	Admin	Total
		290.00	250.00	240.00	230.00	190.00	165.00	142.00	150.00	140.00	110.00	85.00	
		HOURS	HOURS	HOURS	HOURS	HOURS	HOURS	HOURS	HOURS	HOURS	HOURS	HOURS	HOURS
TASK 1 – PROJECT MANAGEMENT													
1.a	QA/QC												
	Internal QA/QC at Each Deliverable		4	8									12
1.b	Project Coordination & Administration												
	Coordination with the GEC		4										4
	Manage Project Activities (emails, calls, meetings, manage/review subs, coordination)		8		8								16
1.c	Project Schedule												
	Maintain a Project Schedule		2		2								4
TASK 1 TOTAL HOURS		0.0	18.0	8.0	10.0	0.0	0.0	0.0	0.0	0.0	0.0	0.0	36.0
TASK 1 TOTAL FEE		\$0	\$4,500	\$1,920	\$2,300	\$0	\$0	\$0	\$0	\$0	\$0	\$0	\$8,720
TASK 4 – PLAN PREPARATION (PS&E) SERVICES													
4.a	Roadway/General Sheets												
	Revising sheets due to project split		2		2	2	4	8		4	8		30
ROADWAY PS&E SUBTOTAL HOURS		0.0	2.0	0.0	2.0	2.0	4.0	8.0	0.0	4.0	8.0	0.0	30.0
ROADWAY PS&E SUBTOTAL FEE		\$0	\$500	\$0	\$460	\$380	\$660	\$1,136	\$0	\$560	\$880	\$0	\$4,576
4.b	Traffic Control												
	Revising sheets due to project split		2		2	2	4	8		4	8		30
TRAFFIC CONTROL PS&E SUBTOTAL HOURS		0.0	2.0	0.0	2.0	2.0	4.0	8.0	0.0	4.0	8.0	0.0	30.0
TRAFFIC CONTROL PS&E SUBTOTAL FEE		\$0	\$500	\$0	\$460	\$380	\$660	\$1,136	\$0	\$560	\$880	\$0	\$4,576
4.c	Drainage												
	Revising sheets due to project split		2		2	2	4	8		4	8		30
DRAINAGE PS&E SUBTOTAL HOURS		0.0	2.0	0.0	2.0	2.0	4.0	8.0	0.0	4.0	8.0	0.0	30.0
DRAINAGE PS&E SUBTOTAL FEE		\$0	\$500	\$0	\$460	\$380	\$660	\$1,136	\$0	\$560	\$880	\$0	\$4,576
4.d	Signing and Pavement Markings Layout												
	Revising sheets due to project split		2		2	2	4	8		4	8		30
S&PM PS&E SUBTOTAL HOURS		0.0	2.0	0.0	2.0	2.0	4.0	8.0	0.0	4.0	8.0	0.0	30.0
S&PM PS&E SUBTOTAL FEE		\$0	\$500	\$0	\$460	\$380	\$660	\$1,136	\$0	\$560	\$880	\$0	\$4,576
4.e	Stormwater Pollution Prevention Plan (SW3P)												
	Revising sheets due to project split		2		2	2	4	8		4	8		30
SW3P PS&E SUBTOTAL HOURS		0.0	2.0	0.0	2.0	2.0	4.0	8.0	0.0	4.0	8.0	0.0	30.0
SW3P PS&E SUBTOTAL FEE		\$0	\$500	\$0	\$460	\$380	\$660	\$1,136	\$0	\$560	\$880	\$0	\$4,576
4.f	Traffic Signal												
	Revising sheets due to project split		2		2	2	4	8		4	8		30
TRAFFIC SIGNAL PS&E SUBTOTAL HOURS		0.0	2.0	0.0	2.0	2.0	4.0	8.0	0.0	4.0	8.0	0.0	30.0
TRAFFIC SIGNAL PS&E SUBTOTAL FEE		\$0	\$500	\$0	\$460	\$380	\$660	\$1,136	\$0	\$560	\$880	\$0	\$4,576
TASK 4 TOTAL HOURS		0.0	12.0	0.0	12.0	12.0	24.0	48.0	0.0	24.0	48.0	0.0	180.0
TASK 4 TOTAL FEE		\$0	\$3,000	\$0	\$2,760	\$2,280	\$3,960	\$6,816	\$0	\$3,360	\$5,280	\$0	\$27,456
TOTAL Seward Junction Loop North Tasks													
TOTAL HOURS (LJA)		0.0	30.0	8.0	22.0	12.0	24.0	48.0	0.0	24.0	48.0	0.0	216.0
TOTAL LABOR FEE (LJA)		\$0	\$7,500	\$1,920	\$5,060	\$2,280	\$3,960	\$6,816	\$0	\$3,360	\$5,280	\$0	\$36,176