

# Update: Juvenile Detention Facility Future Use Evaluation

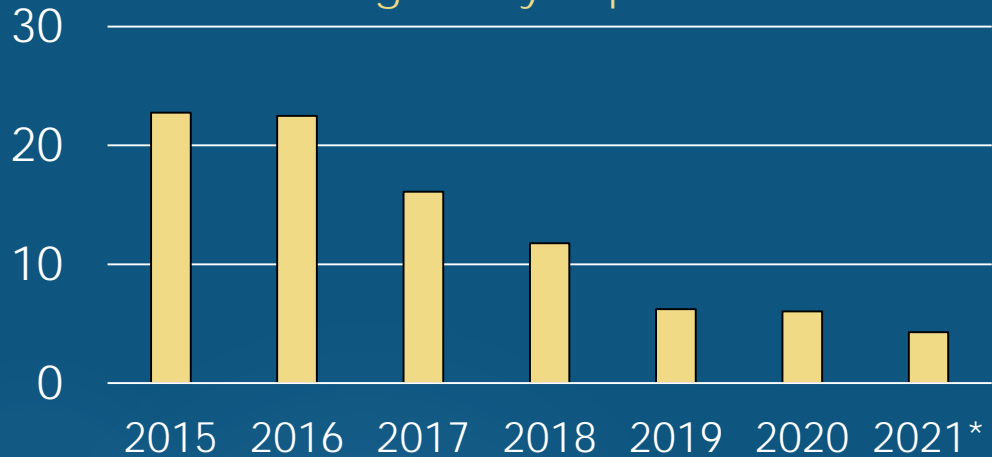
CHIEF PROBATION OFFICER DAN FRUCHTENICHT

SEPTEMBER 14, 2021

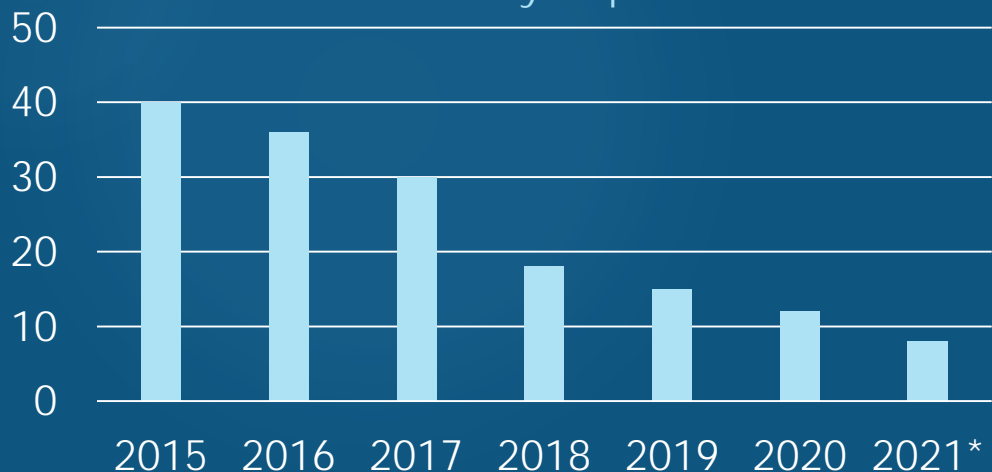


# Detained Yolo Youth Trends

Annual Average Daily Population in the JDF



Annual Peak Daily Population in the JDF



## 44 youth booked in 2020-21

- ▶ Average age at booking: 14.9 years old
- ▶ 42 of 44 released in 2020-21
- ▶ 52% spent less than 5 days in-custody
- ▶ Average length of stay: <13 days for all booked and released in 2020-21
- ▶ 5 youth in custody as of 9/13/21

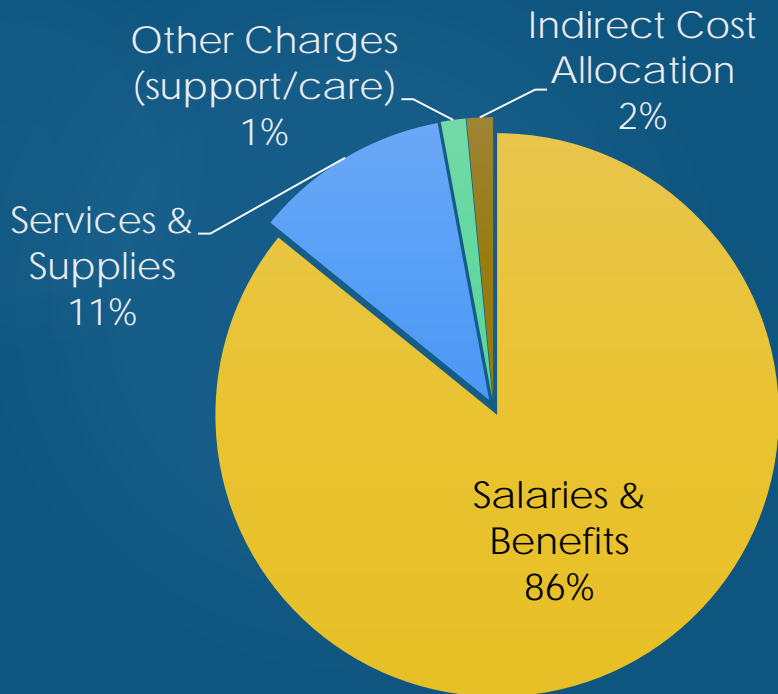
\* First 6 months

# JDF Funding

## JDF Operation

2021-22 Budget: \$4.56 million

Supported by \$1.8 million in General Fund



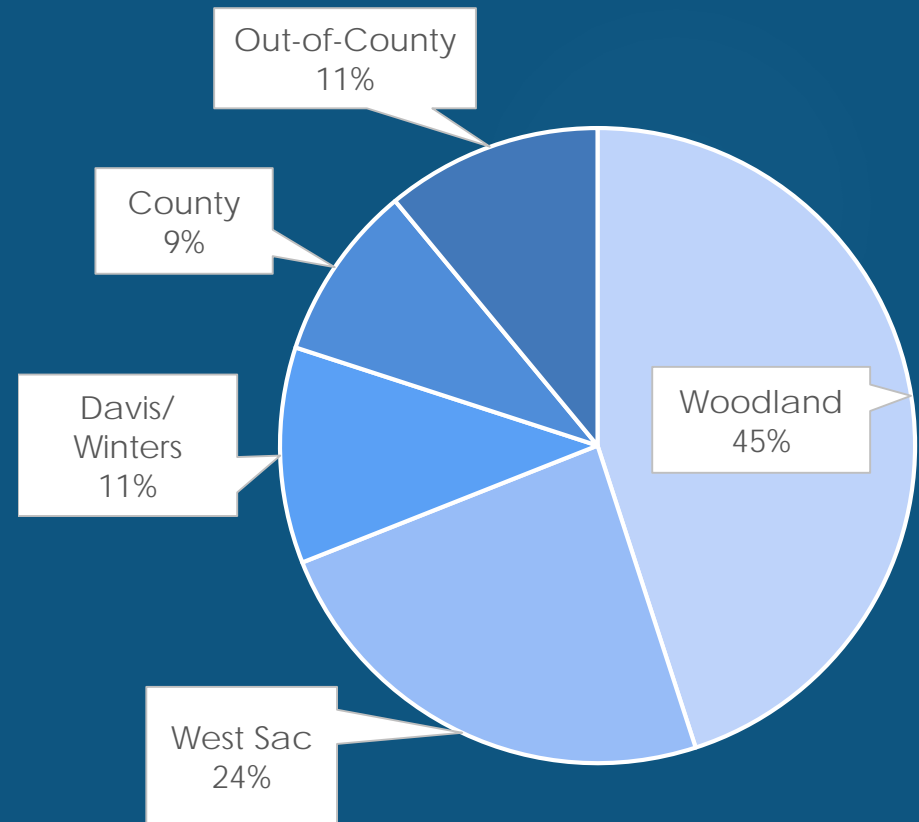
| Contracted Detention                      |                   |
|---|-------------------|
| Detention Contract                        | \$1.4-1.8 million |
| Expanded Transportation Program           | \$900k            |
| Remaining Funding Available               |                   |
| Funds to address youth criminogenic needs | \$200k            |
| General Fund for any County purpose       | \$1.8 million     |

# Supervised Youth Trends

- ▶ 57 youth under jurisdiction of Probation as of 9/7/21
  - ▶ Includes Diversion, Informal Supervision, Wardship, Placement, etc.
- ▶ Top 3 criminogenic needs of youth on Supervision\*
  - ▶ Peer & Social Support Network
  - ▶ Pro-Social Skills
  - ▶ Education & Employment

\* Per the Ohio Youth Assessment System

Supervision by City



# Collaborative Evaluation of Youth Needs & JDF Reuse

- ▶ Yolo County Sequential Intercept Mapping of youth services
- ▶ Internal Probation Department Workgroup
- ▶ Stakeholder and Public Input from:
  - ▶ Juvenile Justice Coordinating Council
  - ▶ Juvenile Justice Commission
  - ▶ Youth Gang Reduction, Intervention and Prevention (Y-GRIP)
  - ▶ Board of Supervisor workshops and presentations
  - ▶ Community Listening Sessions

# Identified Needs and Service Gaps



- ▶ Substance Use Outpatient/Residential Treatment options for youth
- ▶ Specialized urgent care for youth in crisis
- ▶ Placement and services for Commercially Sexually Exploited Children (CSEC)
- ▶ Vocational/employment opportunities for youth
- ▶ Youth Center
- ▶ Youth mentors
- ▶ Community enrichment opportunities for youth
- ▶ Transportation for youth to school, services, enrichment activities, etc. in their communities

# County & Community- Generated Ideas for JDF Reuse

## ▶ Probation-run

- ▶ Job/vocational training center for youth
- ▶ Detention for Yolo youth
- ▶ Pro-social activities for youth
- ▶ Mentoring programs for youth
- ▶ Placement/home and service provider for CSEC
- ▶ Community enrichment opportunities for youth
- ▶ Wraparound teen resource and respite center
- ▶ Detention services for other counties

# County & Community- Generated Ideas for JDF Reuse

## ▶ Other County Department-run

- ▶ Detox center (for youth and/or adults)
- ▶ Resources/programs for Transitional Aged Youth (TAY)/CSEC
- ▶ Programs for victims
- ▶ Mental health programs
- ▶ Animal shelter
- ▶ Group home for foster youth/youth with special needs
- ▶ Substance use outpatient/residential treatment for youth or adults
- ▶ Specialized urgent care for youth in crisis
- ▶ TAY housing
- ▶ Transitional/re-entry program for adult offenders

Note: see Attachment A for list of other government agency-run ideas

# JDF Reuse Options Evaluated by Probation

## Programs/services for justice-involved youth.

- ▶ Continuation as a detention facility (fiscally unsustainable)
- ▶ Youth job training/vocational center (pop. too low)
- ▶ Space for mentoring programs (pop. too low; facilities not suitable)
- ▶ Placement/home and service options for CSEC (pop. too low; facilities not suitable)
- ▶ Wraparound teen resource and respite center (pop. too low; facilities not suitable)
- ▶ Detention services for other counties (no interest from other counties)
- ▶ Youth Camp/Academy (no interest from other counties; facilities not suitable)
- ▶ Education/vocation collaborative with increased treatment services on site (pop. too low)
- ▶ Youth Day Treatment program (pop. too low)
- ▶ Day Treatment for TAY (pop. too low)

# Recommended Action

## ▶ Direction on the future of detention services

- ▶ Further analysis of future uses of the JDF predicated on whether detention services remain in-house vs. contracted
- ▶ Limited compatible uses if detention remains in-house due to restrictions on space and hours of operation
- ▶ More options if detention is contracted out
  - ▶ Options still limited for justice-involved youth population
  - ▶ All youth likely best served in their own communities
  - ▶ Further exploration in this case would benefit from leadership/expertise outside the Probation Department
- ▶ Direction on detention services would provide JDF staff clarity on the future of their employment