



# Drought Update

## Yolo Unincorporated Area



## Ongoing Response – Sept 2021

- Bottled water deliveries for Oct - completed
- Change in eligibility of USDA recovery programs to include equine
- Preliminary grant work

# Emergency Drought Funding

## California Come Back Plan Water Infrastructure Funding Package

Program	Funding Amount
Drinking Water & Wastewater Infrastructure	\$1,300,000,000
Overdue Water Bill Payments to Utilities	\$1,000,000,000
Multi-benefit Land Repurposing for Water Users	\$500,000,000
Sustainable Groundwater Management Act Implementation	\$300,000,000
Wildlife Corridor & Fish Passage Projects	\$230,000,000
Water Conveyance Improvements & Damage Repair	\$200,000,000
Habitat Restoration & Multi-Benefit Flood-Risk Reduction Projects	\$200,000,000
Groundwater Cleanup and Water Recycling Projects	\$150,000,000
Data Collection to Forecast, Monitor & Assess Hydrologic Conditions	\$91,000,000
State Water Efficiency & Enhancement Program Grants	\$60,000,000
Fisheries & Wildlife Conservation	\$33,000,000
Emergency & Permanent Solutions	\$27,000,000

## FEDERAL FUNDING

- USDA Rural Development (\$41M)
- US EPA Drinking Water program
- Bureau of Reclamation – Water SMART
- FEMA – BRIC & HMP programs

# Emergency Drought Funding

- Grant writing consultant on board
- Kick off meetings underway
- Project list refinements underway
- Outreach for additional needs/projects

## NEEDS SUMMARY

Water \$ 19.7 M

Wastewater \$ 24.9 M

Stormwater \$ 2.5 M

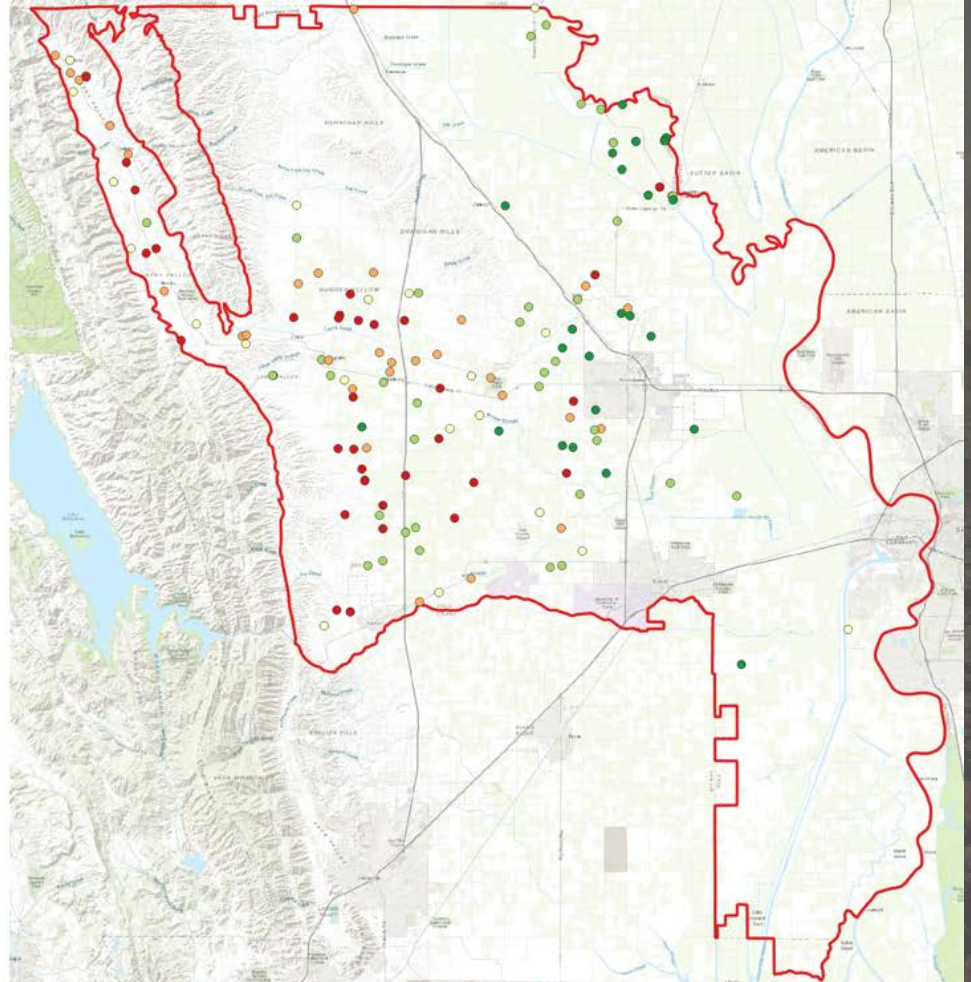
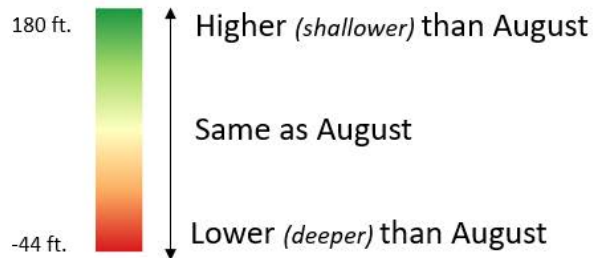
GW Recharge \$ 500 K

**\$ 47,600,000**

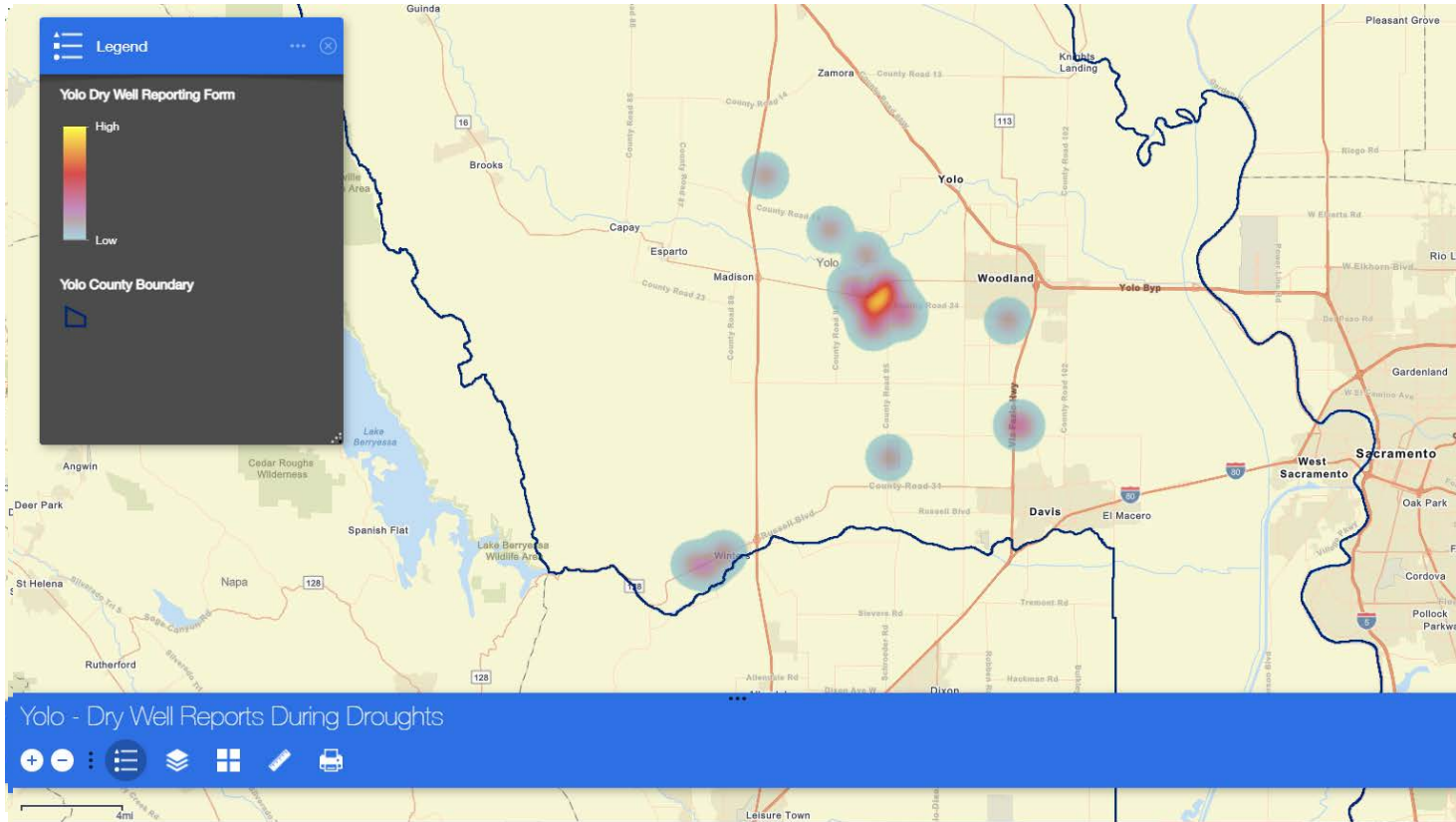
# Water in Yolo

## Change from August

- September water level compared to August
- 53% of wells are showing recovery

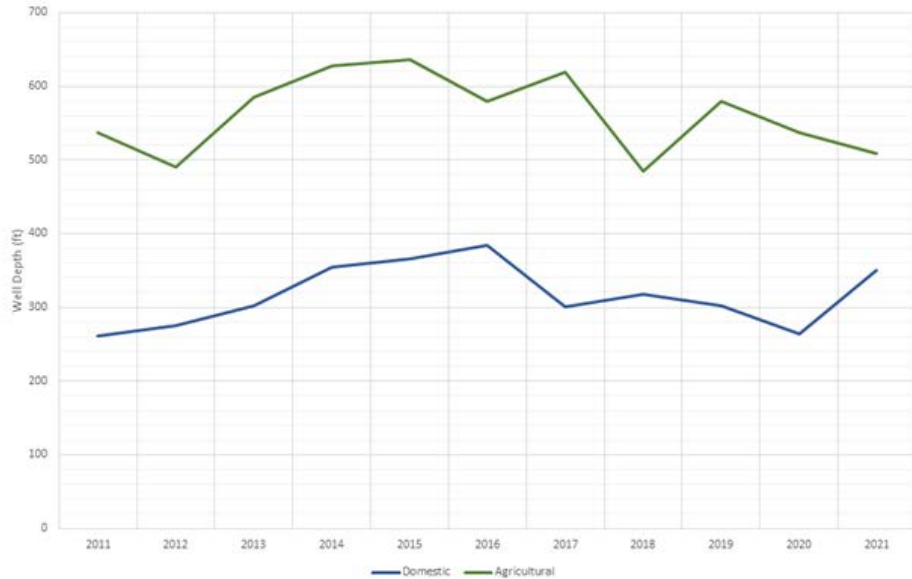


# What Are We Seeing Now

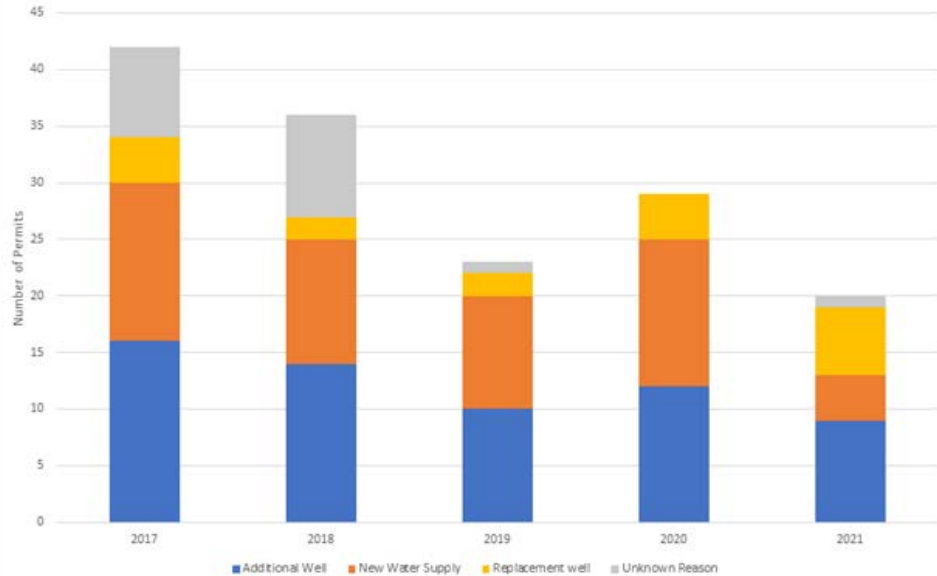


# Well Permit Data

Well Depth by Type



Reason for Domestic Well Permits





# Water Purveyor's Today

- Cal Am Water -  
Dunnigan
- Madison CSD
- Cacheville CSD
- Knight's Landing CSD
- Esparto CSD
- Wild Wings CSA
- North Davis Meadows  
CSA
- El Macero CSA



Questions/Comments