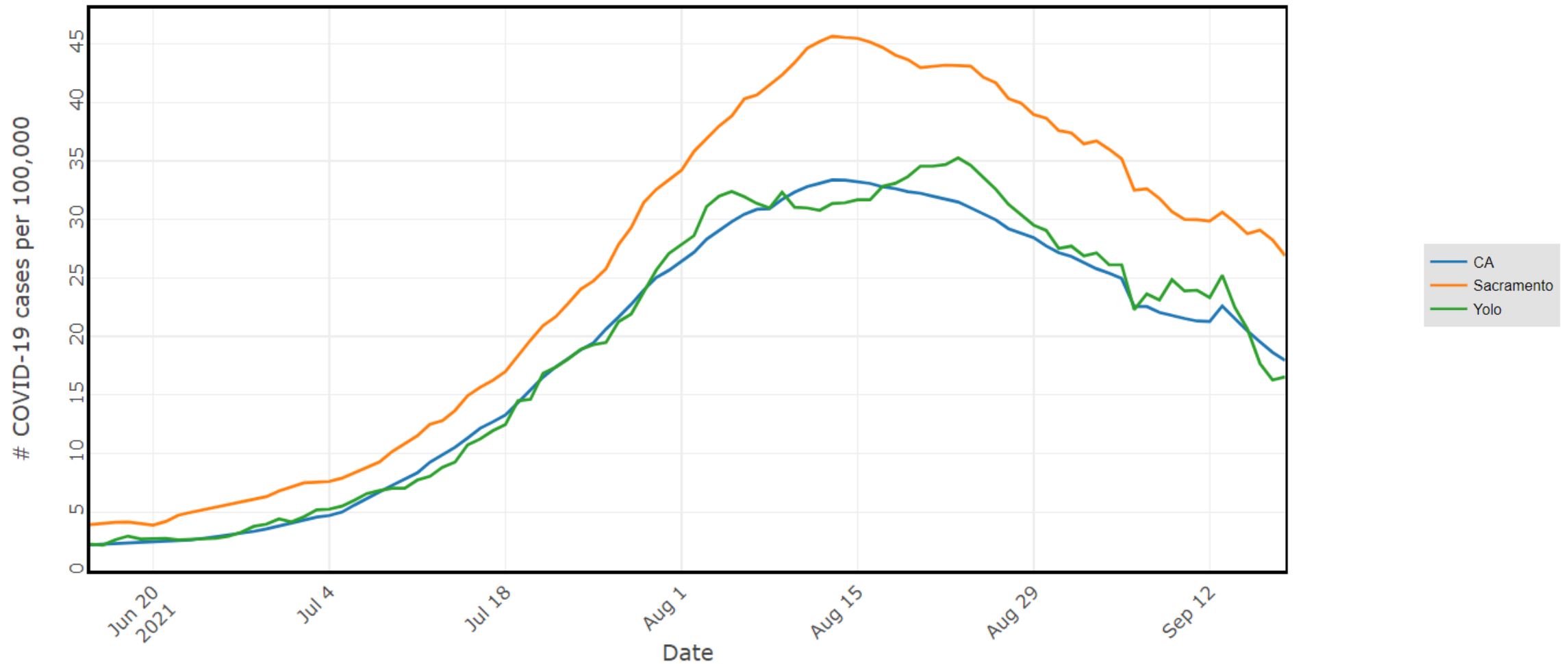


Overview

- COVID by the numbers
- Vaccine boosters
- Jail cases

Yolo's COVID-19 case rate is decreasing.



Yolo's daily case rate of 16.5 qualifies as high per CDC.

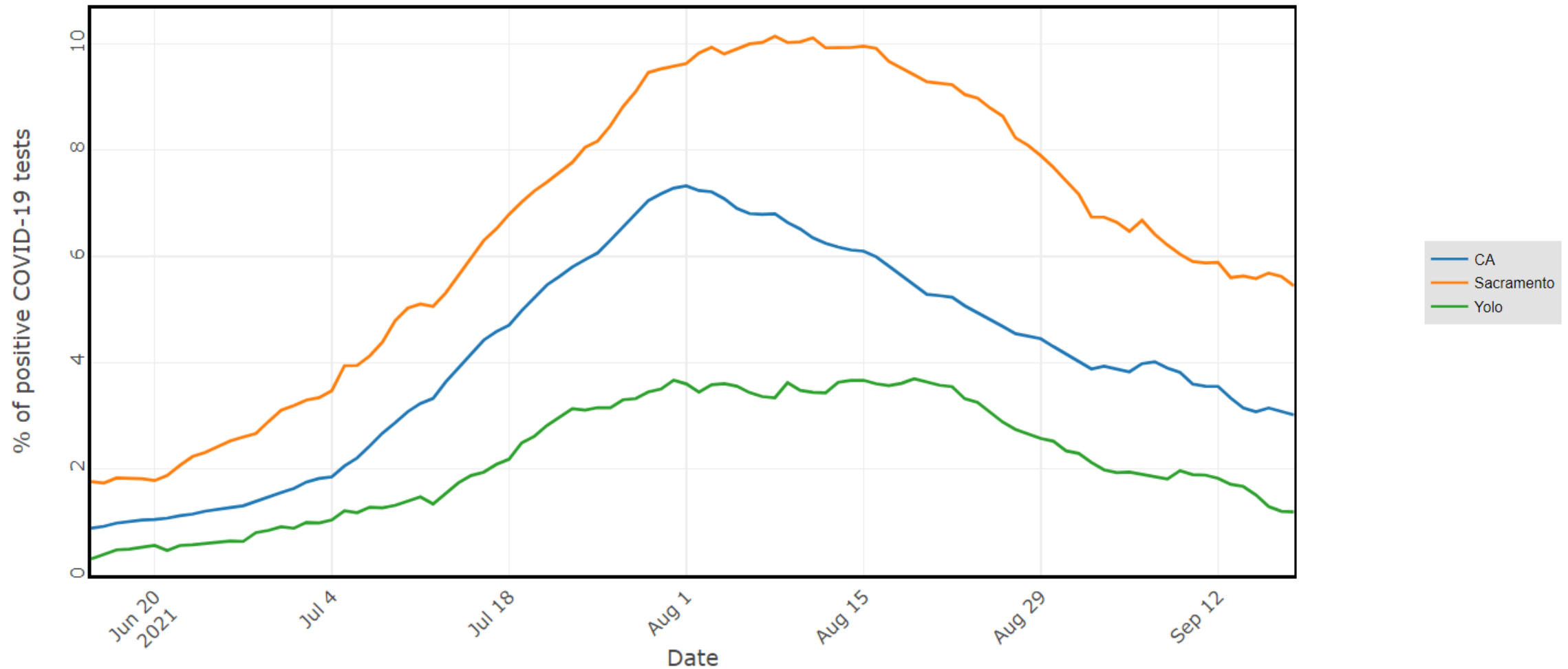
Yolo
16.5/100k/day
116/100k/week



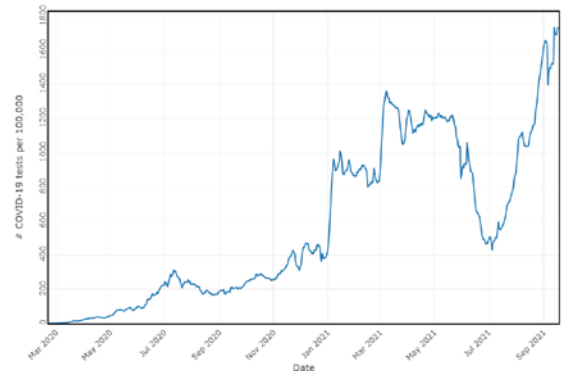
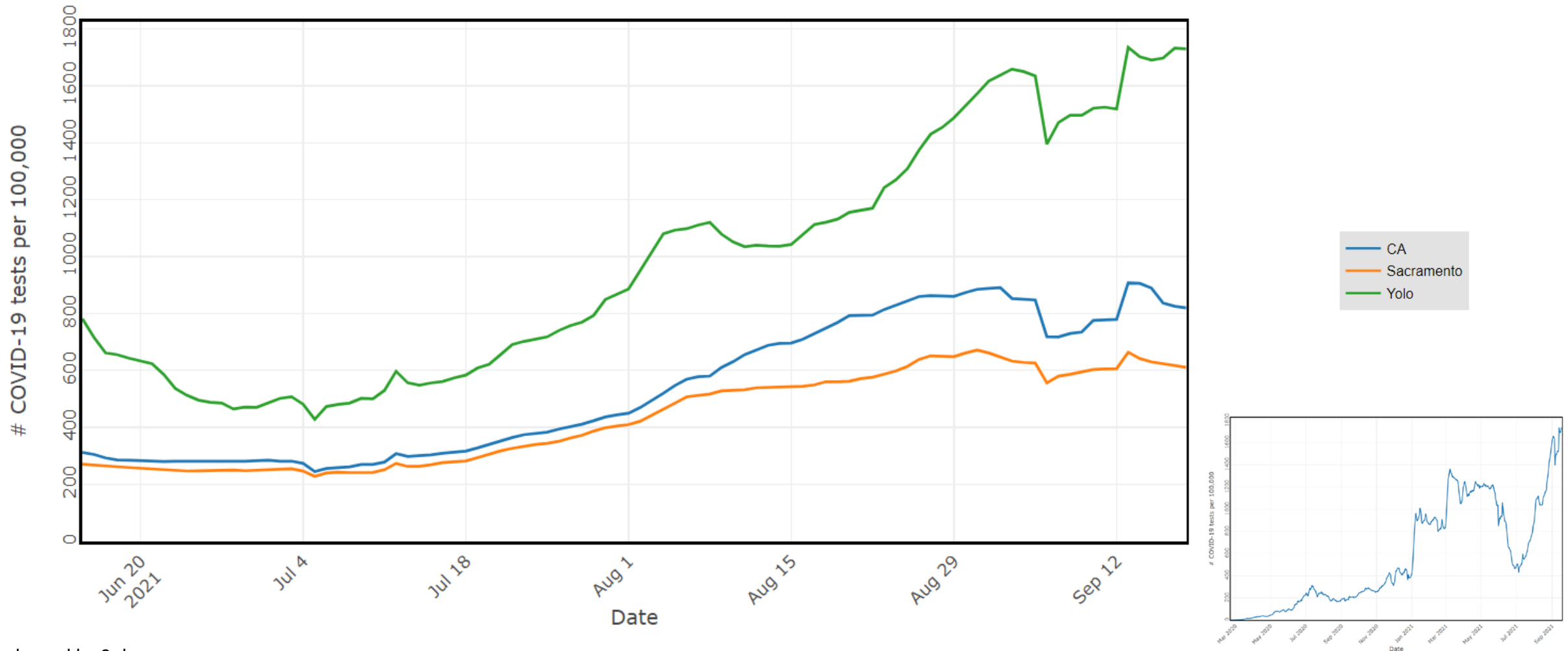
Table 1. CDC Indicators and Thresholds for Community Transmission of COVID-19¹

Indicator	Low Transmission Blue	Moderate Transmission Yellow	Substantial Transmission Orange	High Transmission Red
Total new cases per 100,000 persons in the past 7 days ²	0-9	10-49	50-99	≥ 100

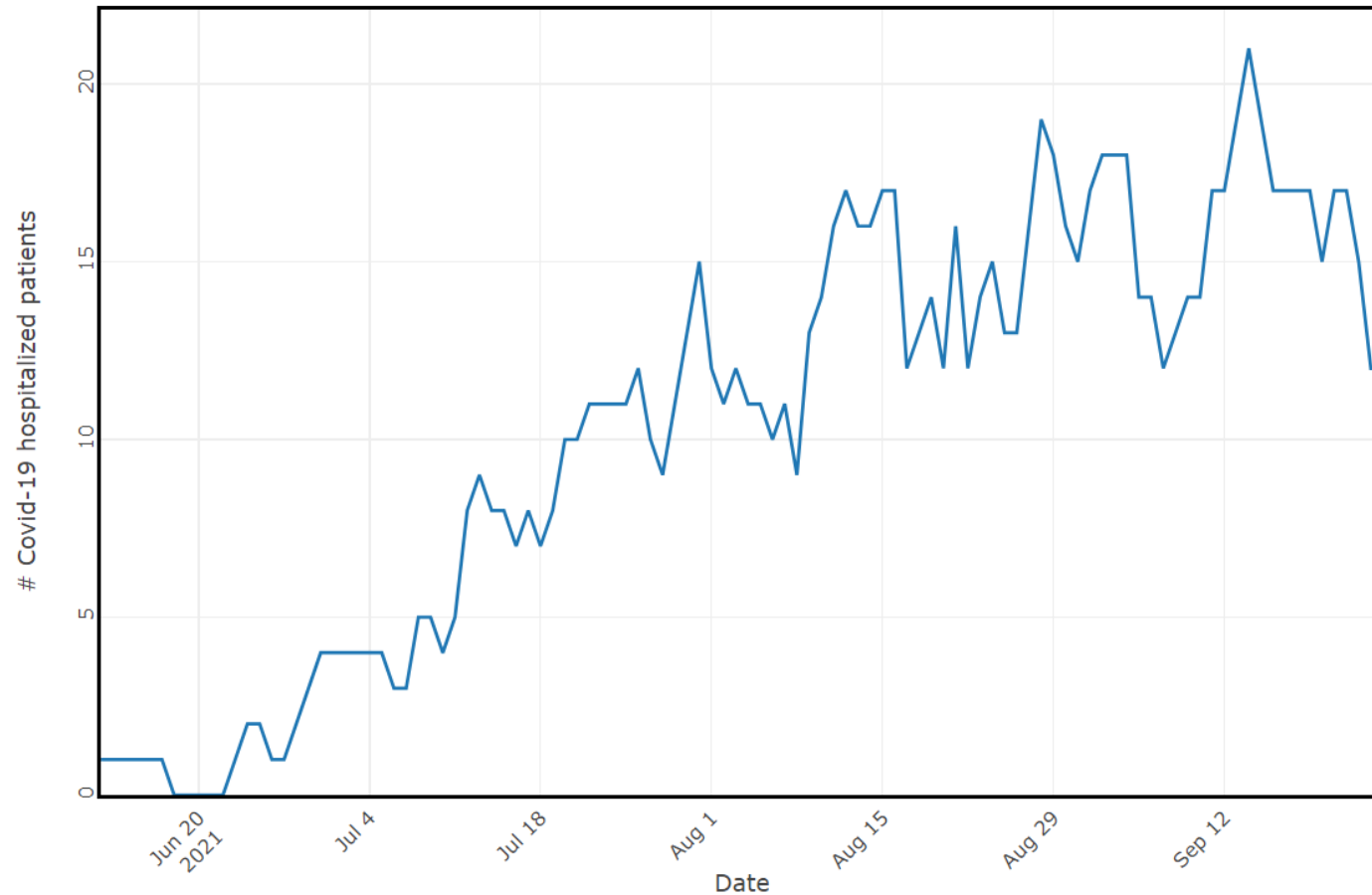
Yolo's COVID-19 testing positivity also decreasing.



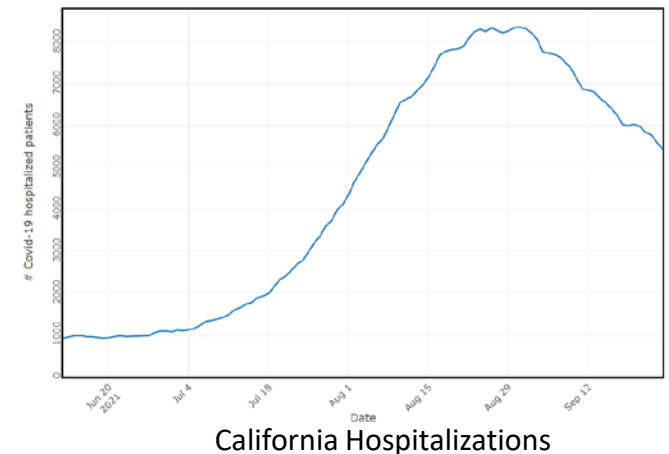
Variable testing volume influences case rate and testing positivity.



COVID-19 hospitalizations are decreasing.




Date	COVID-19+ Patients in Hospital
6/15	1
9/27	12 (7 ICU)*



*On 9/27, 8/12 (67%) hospitalized COVID-19 patients were unvaccinated

Booster vaccines now authorized for some.

- Vaccines remain highly effective against severe disease, hospitalization, and death but protection against hospitalization shows small decrease against hospitalization in older adults
 - FDA authorized and CDC recommended Pfizer boosters last week
 - 65+ after 6 months
 - Long-term care facility residents after 6 months
 - 50-64 after 6 months if underlying condition
 - 18-49 after 6 months if underlying condition
 - 18-64 after 6 months if high occupational exposure risk
 - Considered fully vaccinated without booster
 - Moderna or Johnson & Johnson boosters not yet available
- 
- The diagram consists of two blue curly braces on the right side of the list. The first brace groups the first three sub-bullets (65+, long-term care facility residents, and 50-64 with underlying condition) and is labeled 'Recommend'. The second brace groups the last two sub-bullets (18-49 with underlying condition and 18-64 with high occupational exposure risk) and is labeled 'Individual Decision'.

Pfizer boosters now available in Yolo County.

- Retail pharmacies (Costco, CVS, RiteAid, Walgreens, Walmart)
- Health care providers
- Yolo County Public Health (myturn.ca.gov)
- Call-to-order vaccine program (if 65+ or homebound)

Priority remains vaccinating the unvaccinated.

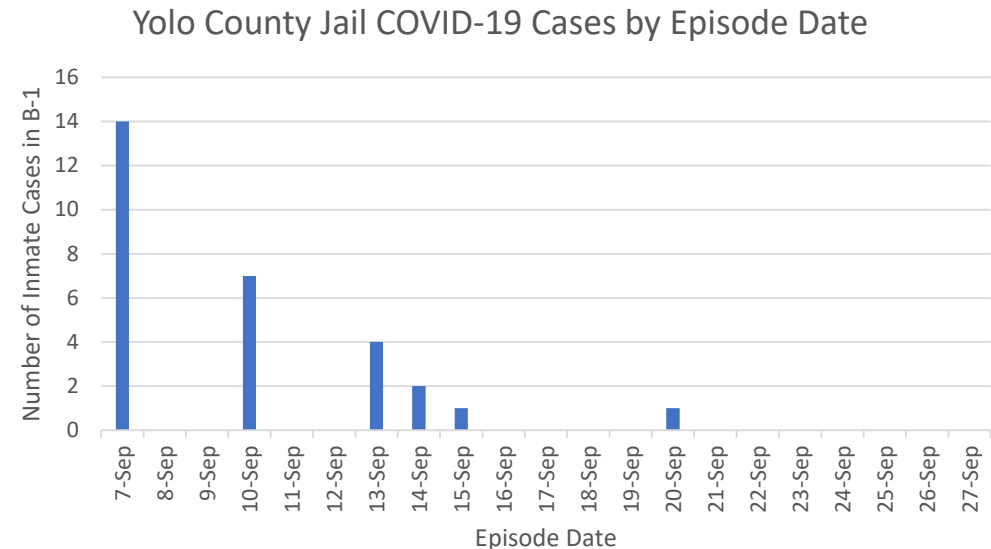
- Call-to-order program continues for 1st and 2nd doses
- No appointment needed for 1st and 2nd doses at YCPH vaccine clinics
- Collaboration with CBO partners continues

58% of Yolo residents are fully vaccinated.

Age Group	% At Least 1 Dose	% Fully Vaccinated
All Ages	64%	58%
12-15	56%	50%
16-19	45%	39%
20-24	48%	43%
25-29	73%	66%
30-34	96%	85%
35-44	90%	80%
45-54	86%	78%
55-64	92%	84%
65-74	92%	85%
75-84	82%	77%
85+	83%	75%

Outbreak at main jail has slowed.

- 29 inmates tested positive in B-1 housing unit since 9/7 (17 symptomatic, 6 vaccinated)
- Positive inmates isolated in medical unit for 10d
- All inmates in B-1 quarantined until 14d from last positive (last new positive 9/20)
- Testing: All inmates in facility at outbreak onset, all inmates in B-1 daily, all inmates at booking since 9/7, any inmates with symptoms
- Inmates previously offered vaccination; will repeat
- Jail staff test weekly; 8 positive since 8/24 (7 vaccinated)



Second outbreak identified at jail.

- Adult female housing unit (A) in Juvenile Detention Facility
- 2 inmates with symptoms tested positive 9/27
- All inmates in A pod tested 9/27: 3 additional positives (all unvaccinated)
- Positive inmates isolated in infirmary
- Housing unit A quarantined 14 days
- Quarantined inmates will test daily
- Inmates previously offered vaccination; will repeat
- Staff will continue to test weekly