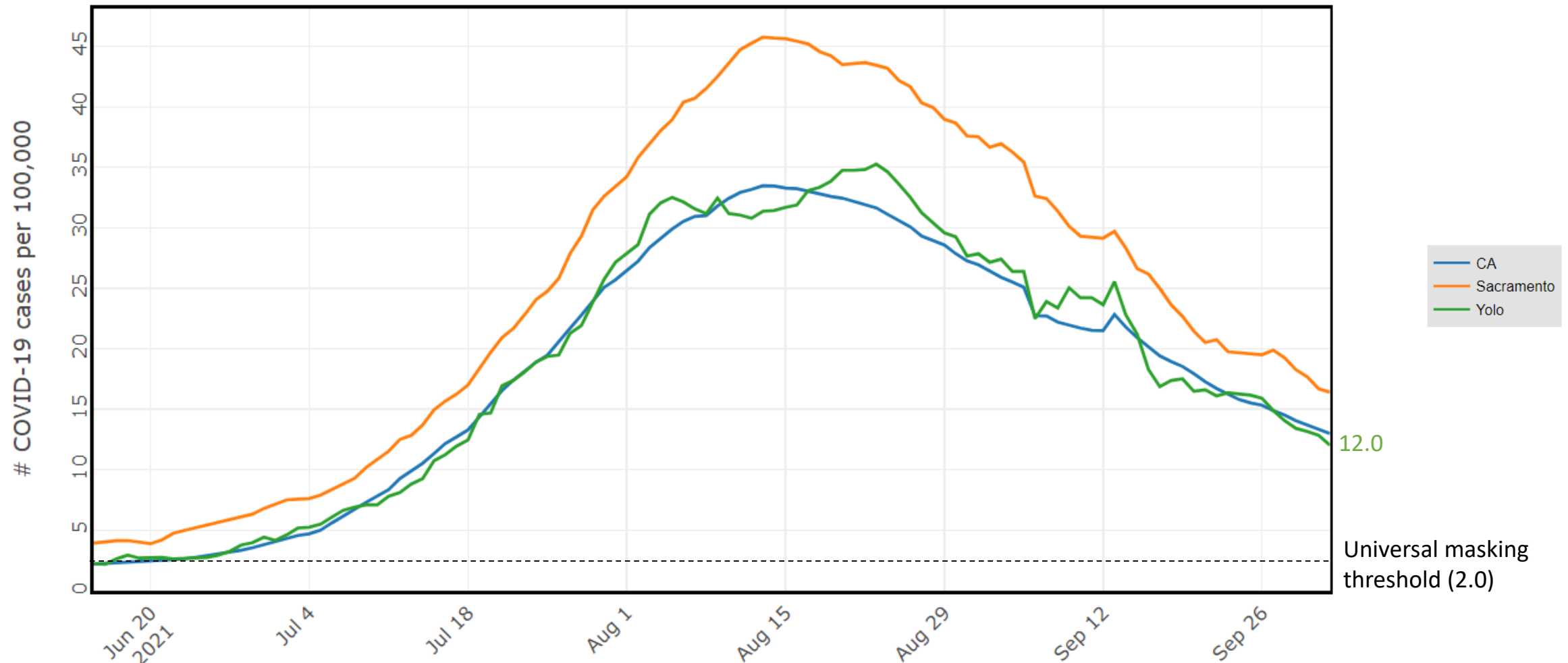


Overview

- COVID by the numbers
- Vaccines
 - Cases and deaths by vaccination status
 - Upcoming authorizations
 - Vaccination during pregnancy

Yolo's COVID-19 case rate continues to decrease.



Yolo now has Substantial community transmission.

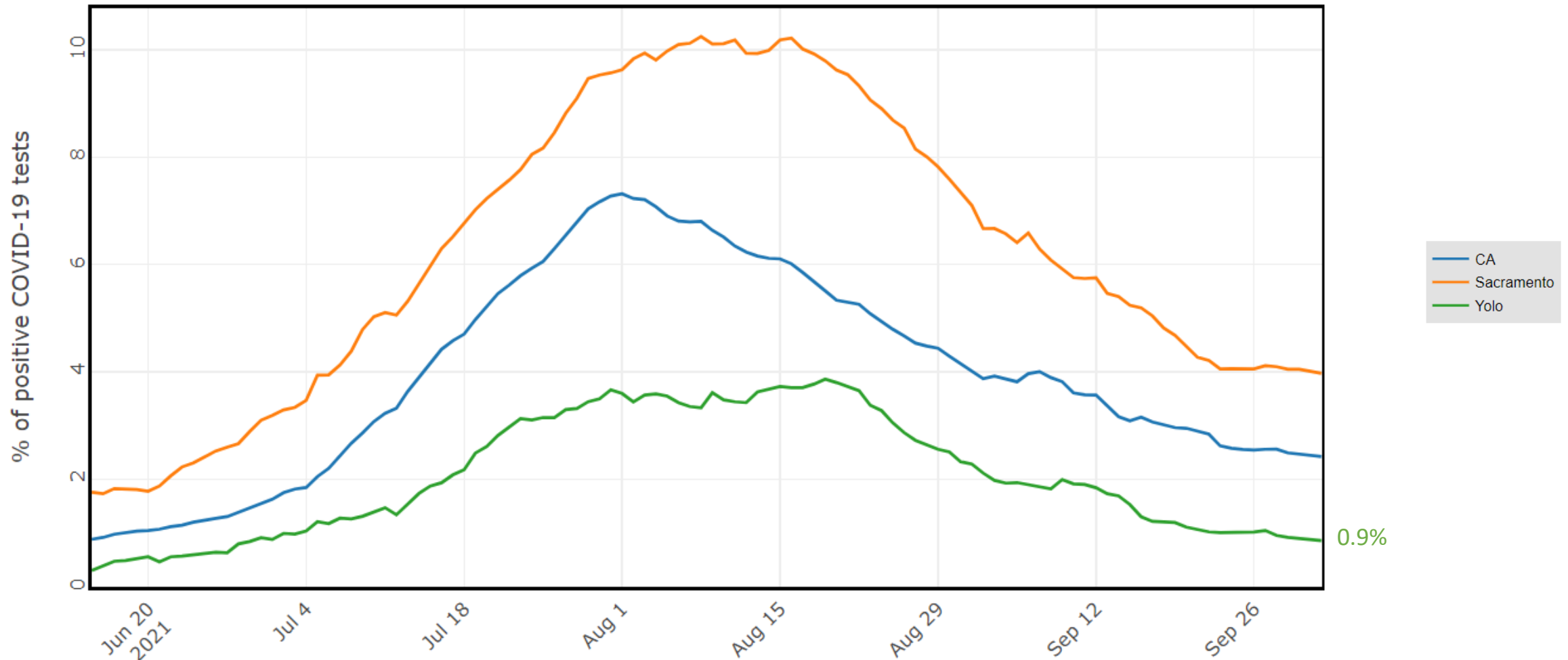
Yolo
12.0/100k/day
84/100k/week



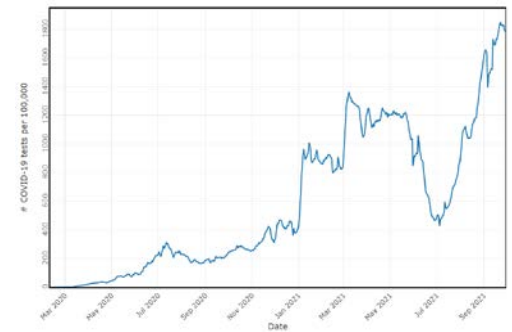
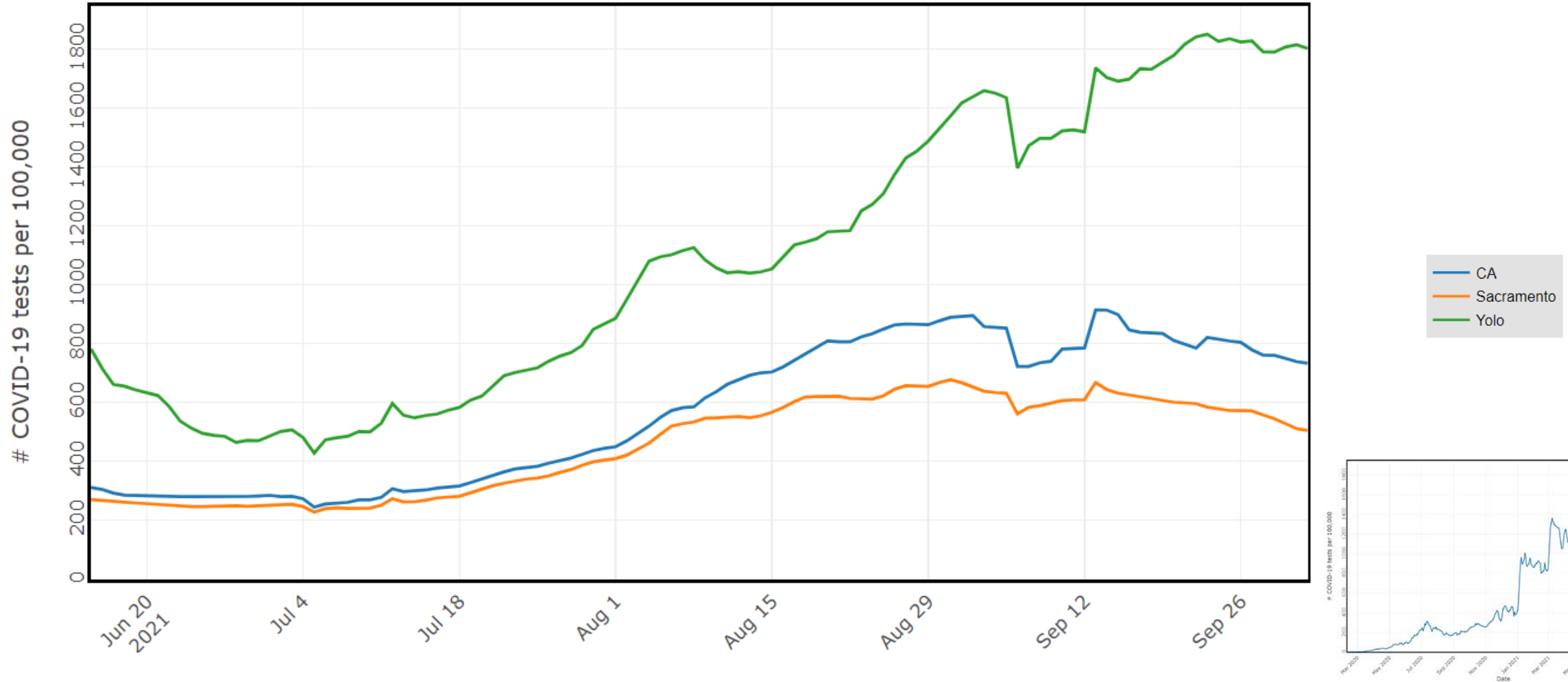
Table 1. CDC Indicators and Thresholds for Community Transmission of COVID-19¹

| Indicator | Low Transmission Blue | Moderate Transmission Yellow | Substantial Transmission Orange | High Transmission Red |
|---|--------------------------|------------------------------------|---------------------------------------|--------------------------|
| Total new cases per 100,000 persons in the past 7 days ² | 0-9 | 10-49 | 50-99 | ≥100 |

Yolo's COVID-19 testing positivity low and stable.

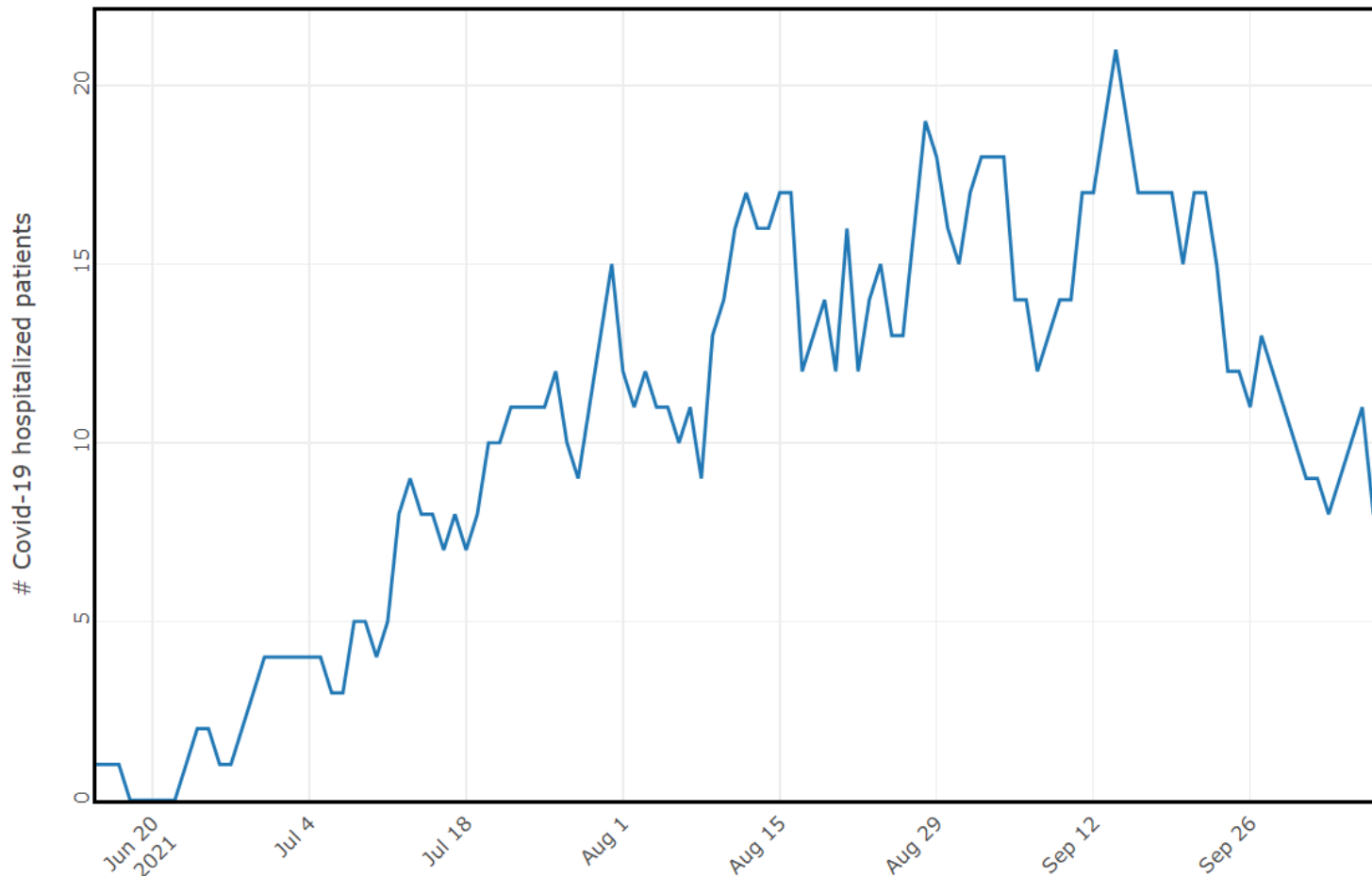


Testing volume remains near all-time high.

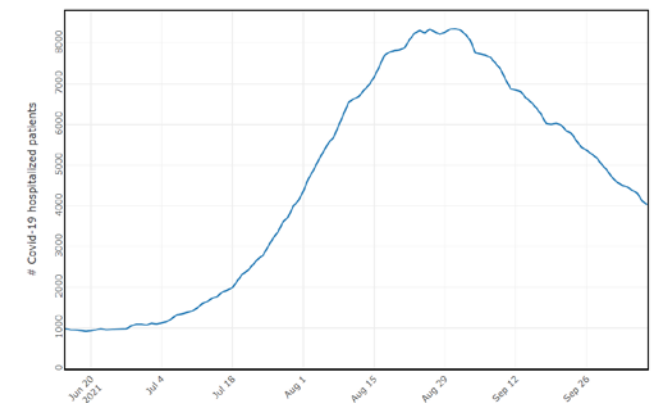


Data are lagged by 9 days

COVID-19 hospitalizations are decreasing.



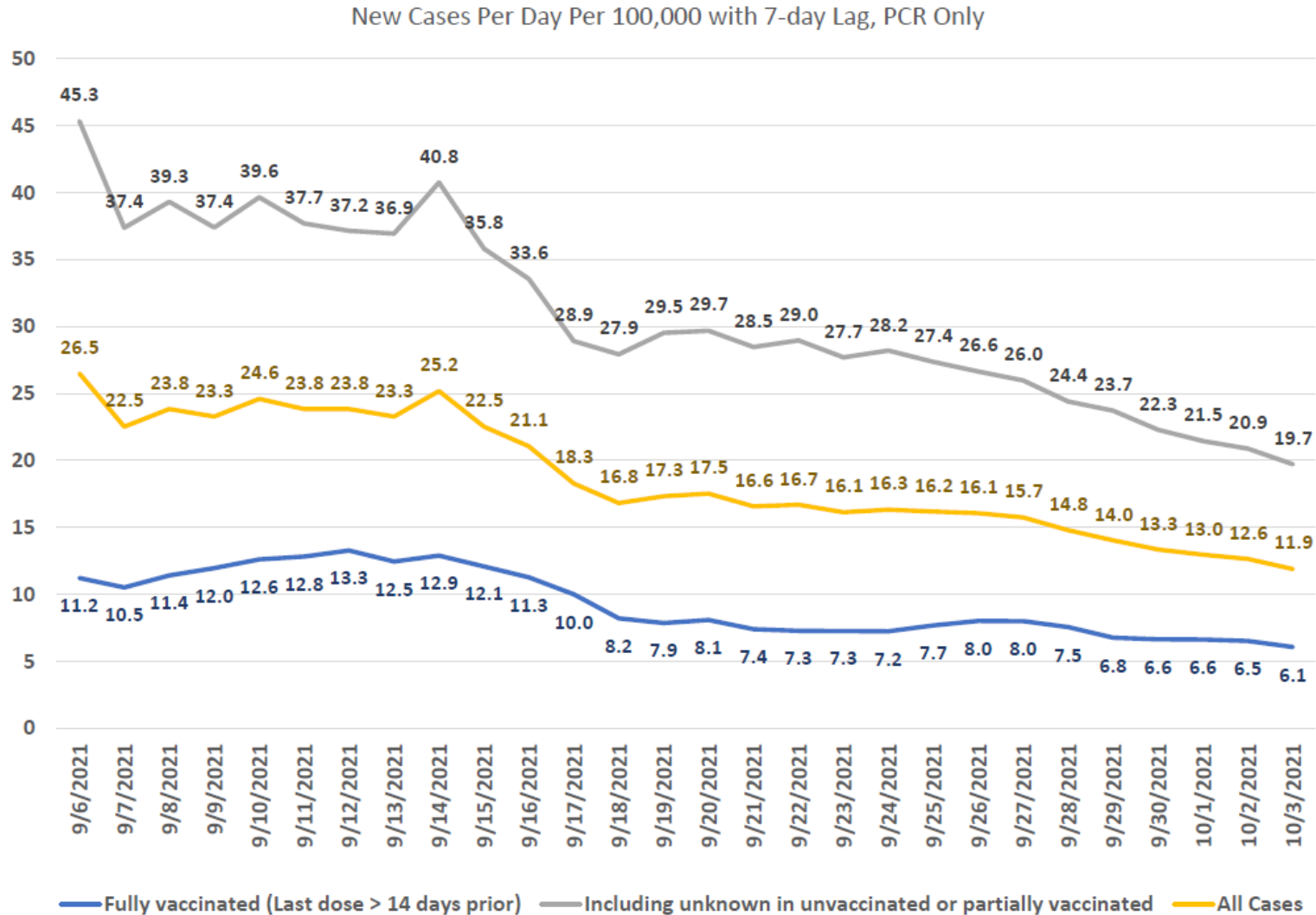
| Date | COVID-19+ Patients in Hospital |
|-------|--------------------------------|
| 9/27 | 12 (7 ICU) |
| 10/11 | 8 (3 ICU)* |



California Hospitalizations

*On 10/11, 7/8 (88%) hospitalized COVID-19 patients were unvaccinated

Yolo case rate 3x higher among unvaccinated persons.



- Yolo: $\frac{19.7 \text{ unvax}}{6.1 \text{ vax}} = 3.2x$
- CA: $\frac{43.5 \text{ unvax}}{6.1 \text{ vax}} = 7.1x$

Few deaths among vaccinated persons.

- 245 Yolo residents have died of COVID-19 since pandemic began
- 81 Yolo residents have died of COVID-19 since January 18, 2021, the first day any resident became fully vaccinated
 - Of these 81, 7 were fully vaccinated against COVID-19 (6%)
 - 6/7 65+; 7/7 60+
 - 7/7 had underlying medical conditions

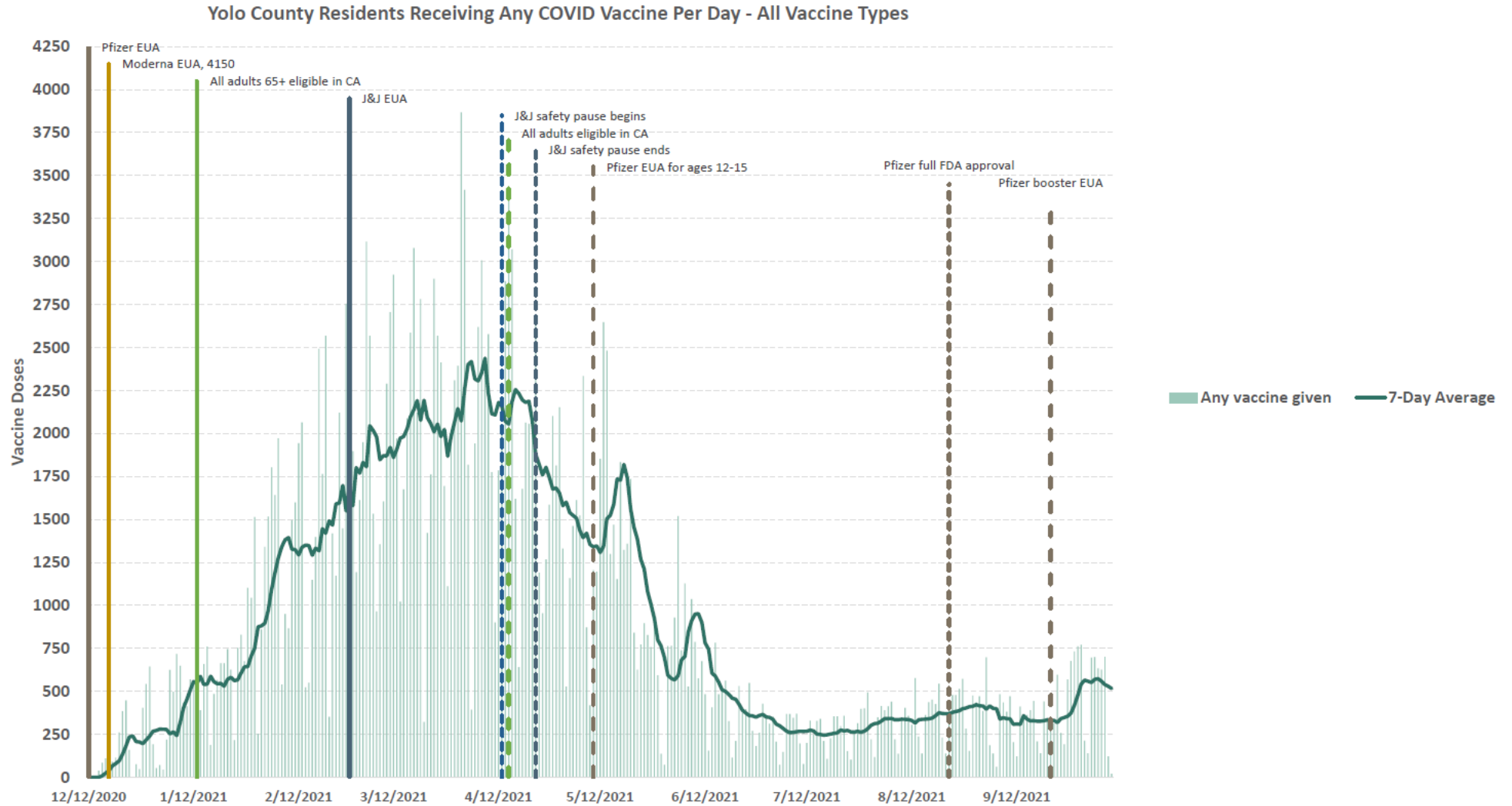
Yolo County vaccination rate near state average.

| Location | Age Group | % At Least 1 Dose | % Fully Vaccinated |
|-------------|-----------|-------------------|--------------------|
| Yolo County | All Ages | 67.2% | 59.6% |
| California | All Ages | 72.6% | 59.7% |
| Yolo County | 12+ | 77.4% | 68.7% |
| California | 12+ | 85.1% | 70% |

Uptake of Pfizer boosters low.

- Booster dose recommended for 65+, long-term care facility residents, and 50-64 with underlying conditions
- Booster also available for 18+ with underlying conditions or those who live or work in high-risk setting
- 6,000 Yolo residents have received Pfizer booster as of Oct. 10
 - 3,700 of these 65+
- 9,000 Yolo residents 65+ eligible for Pfizer booster as of Oct. 3
- 24,000 Yolo residents 18+ eligible for Pfizer booster as of Oct. 3
- FDA will meet on Oct 14-15 to discuss Moderna and J&J boosters

Vaccine demand has risen since boosters authorized.



Pfizer EUA for ages 5-11 expected within a month.

- Pfizer applied for EUA for 5-11 years on October 7
- FDA meeting schedule for October 26 to discuss data
- Yolo County Public Health working with school districts to offer school-based vaccines at multiple times and locations within each district

Vaccination recommended for pregnant persons.

- Pregnant persons at higher risk of severe COVID-19
 - In England, 1 in 5 patients on ECMO were unvaccinated pregnant persons
- Pregnant persons at increased risk of pre-term birth and admission of newborn to NICU
- Benefits of vaccine in pregnancy outweigh risks
 - Vaccine safe
 - Vaccine effective
- According to CDC, only 31% of pregnant persons in U.S. are vaccinated against COVID-19