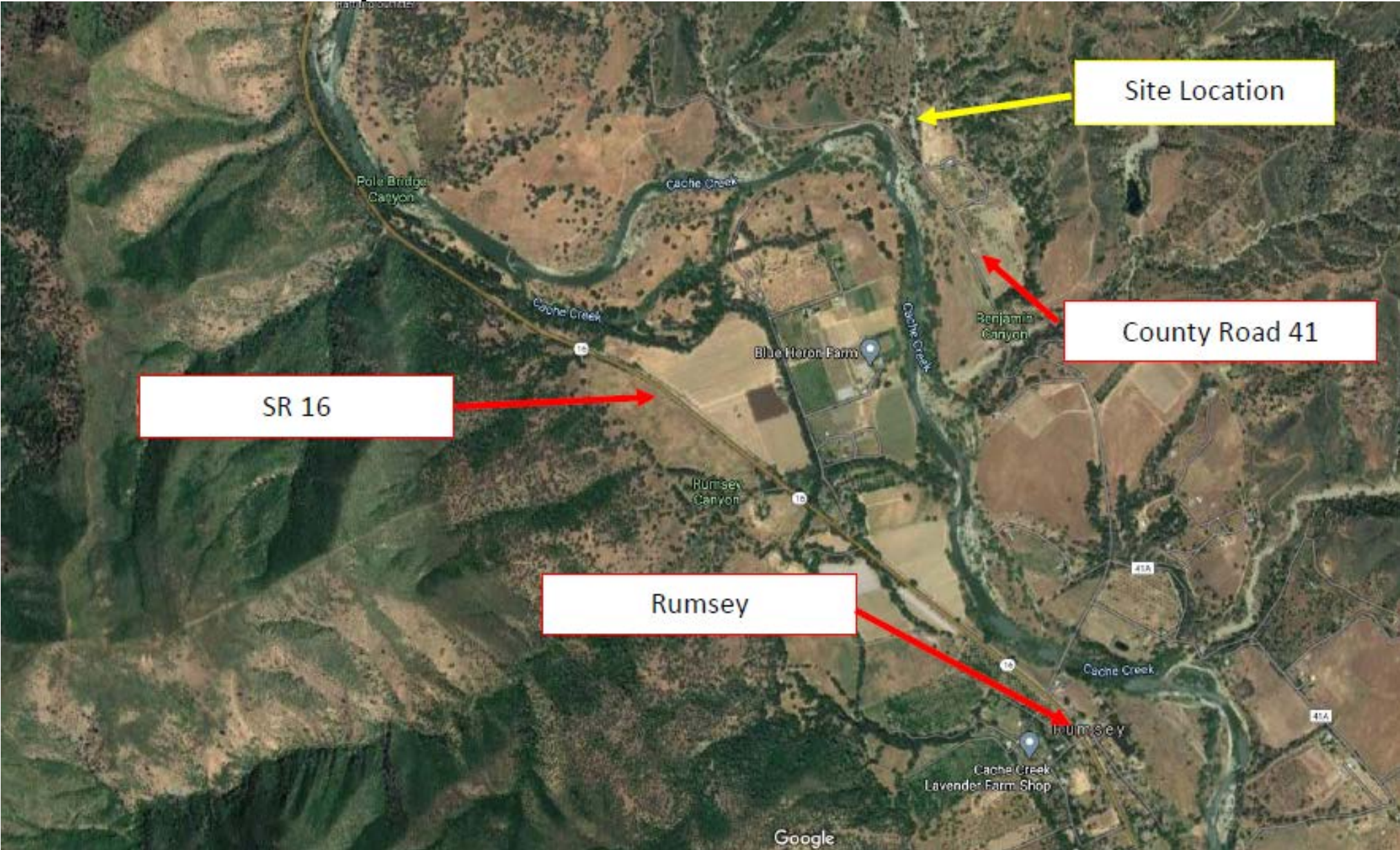


County Road 41 Replacement Right-of-Way

Regional Map



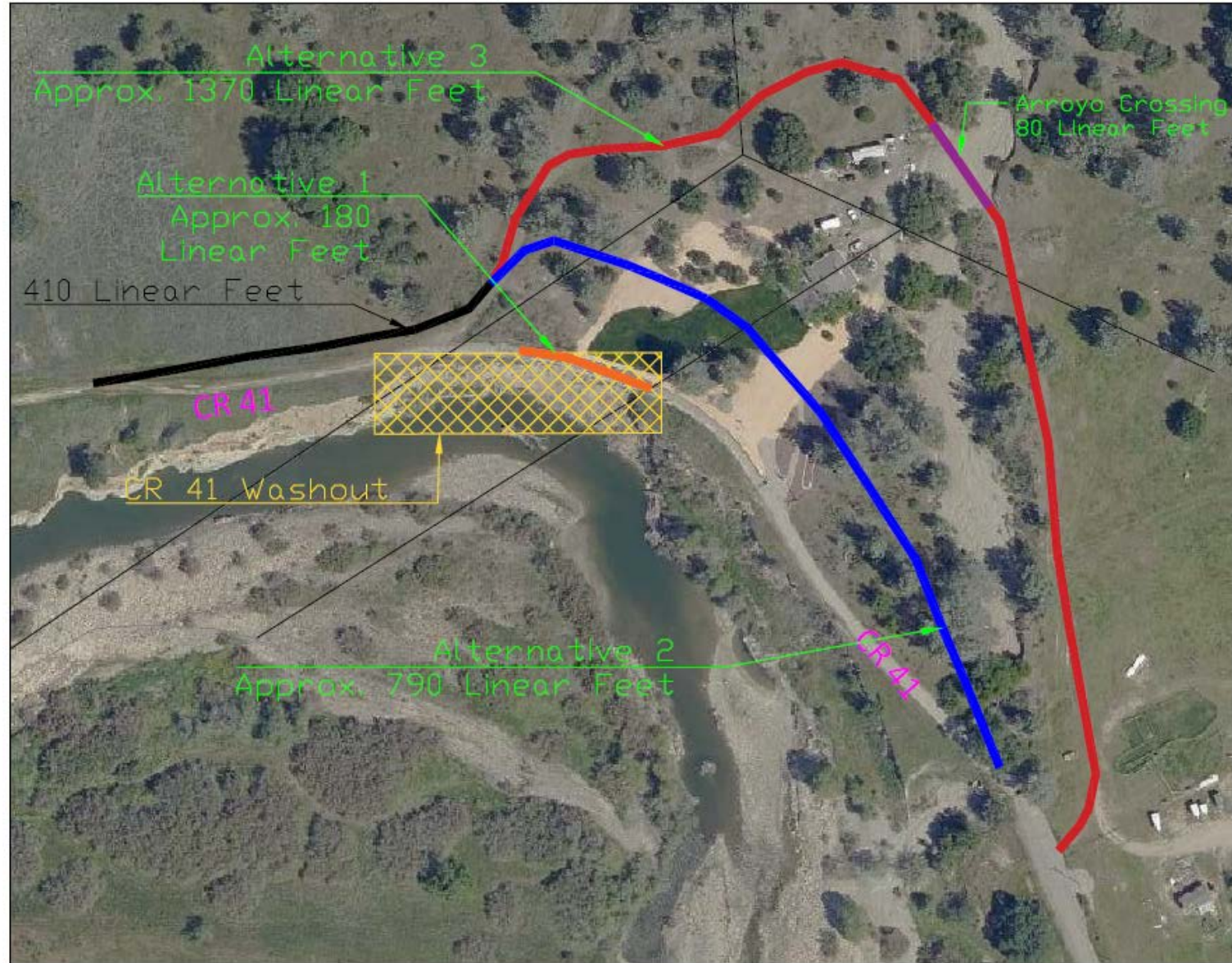
Location Map



History

- In early 2019 the erosion progressed and washed out several hundred feet of road making the right-of-way impassable.
- Last February staff received Board direction to pursue two alternatives presented.
- Staff discussed these two alternatives and developed a third alternative through discussions with stakeholders.

Alternatives Map



Solutions

| | Description | Length of Road to be Constructed (ft) | Environmental Impacts | Estimated Cost (\$) | Estimated schedule for delivery (Yrs.) |
|---------------|--|---------------------------------------|---|---------------------|--|
| Alternative 1 | Place road in existing ROW and rebuild 900 ft of creek back with a soldier pile wall | 400 | Impacts to the creek due to pile driving | \$10,000,000 | 3-4 |
| Alternative 2 | Reestablish the ROW roughly 120 feet to the east | 1200 | Minimal impact to reestablish connection of CR 41 | \$250,000 | 1 |
| Alternative 3 | Reestablish the ROW behind the dry arroyo | 1780 | Impacts to the arroyo due to crossing | \$350,000 | 2-3 |

Staff Recommended Action

- Select Alternative 2 and direct staff to identify funds for design and construction and return to the Board for project approval.