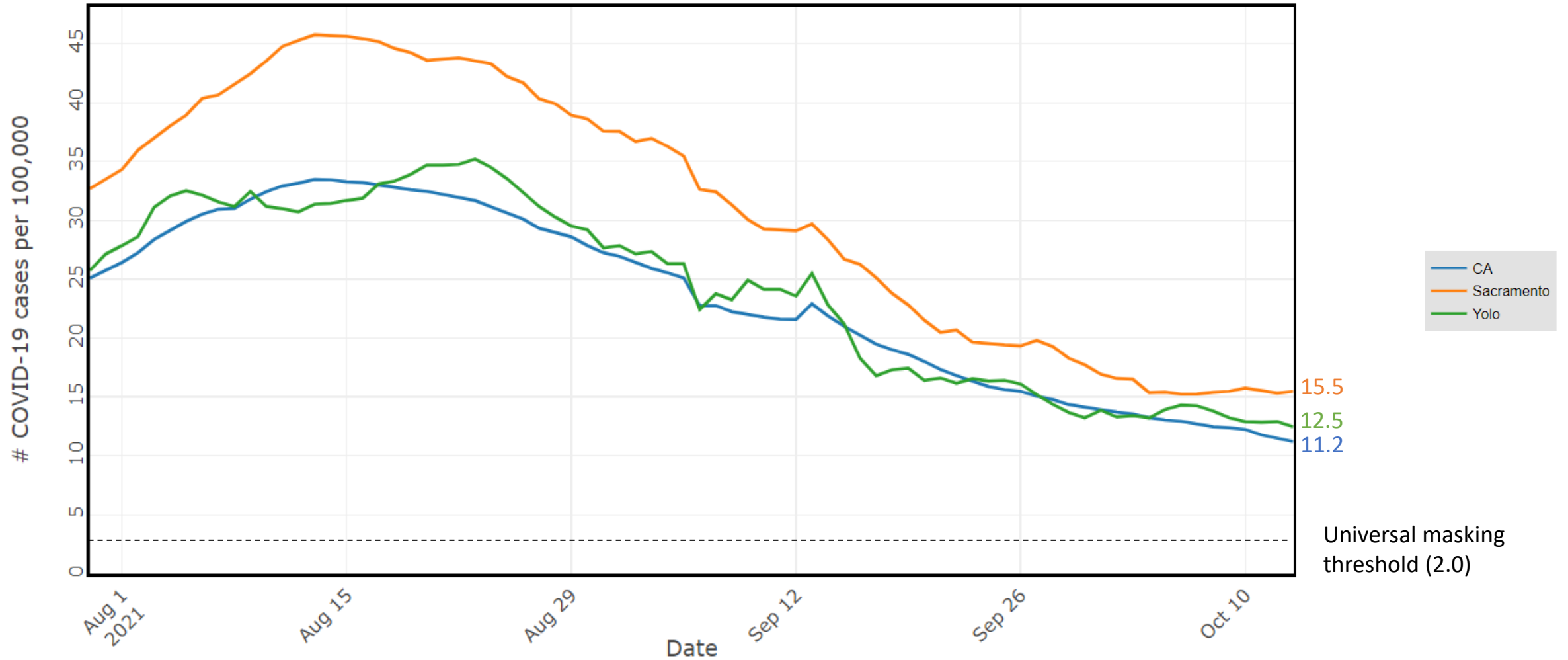


Overview

- COVID by the numbers
- Vaccines
 - Recent & upcoming authorizations
- Outbreaks in congregate settings

Yolo's COVID-19 case rate no longer falling.



Yolo still has Substantial community transmission.

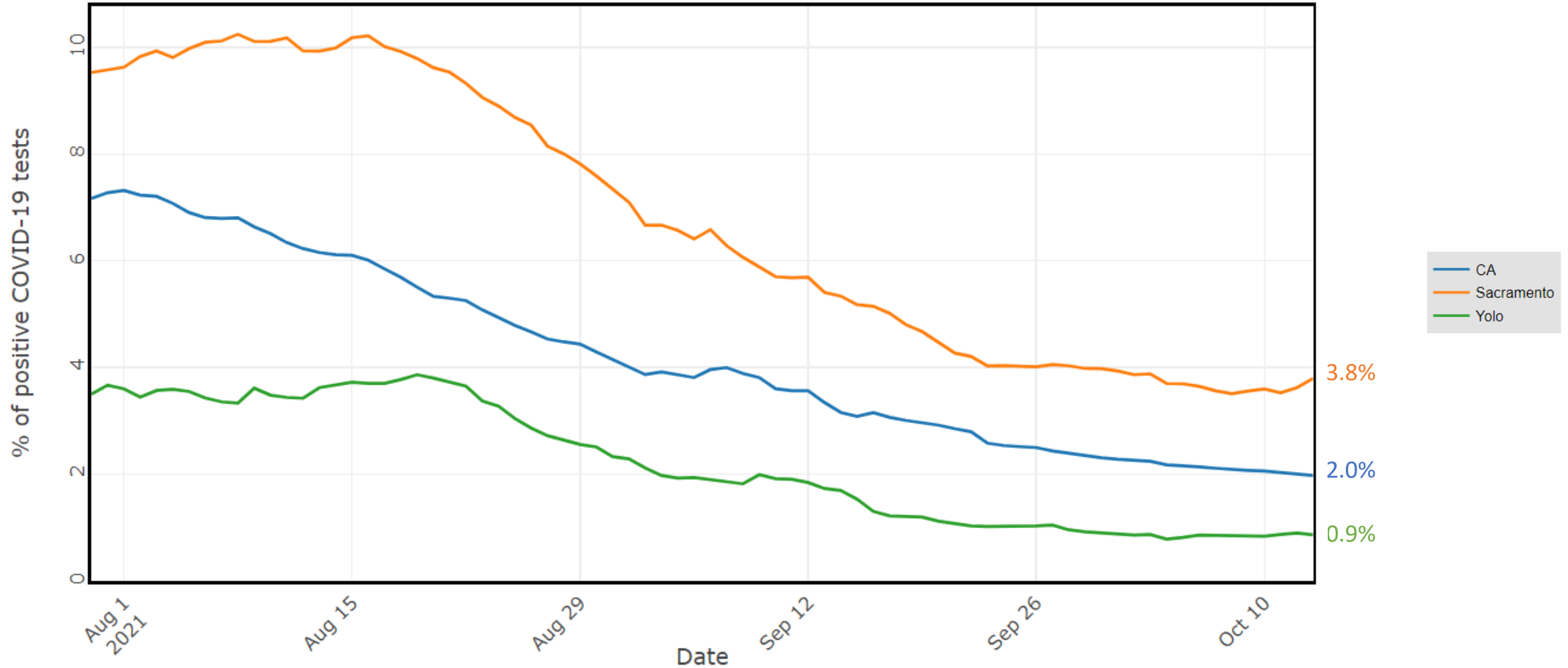
Yolo
12.5/100k/day
88/100k/week



Table 1. CDC Indicators and Thresholds for Community Transmission of COVID-19¹

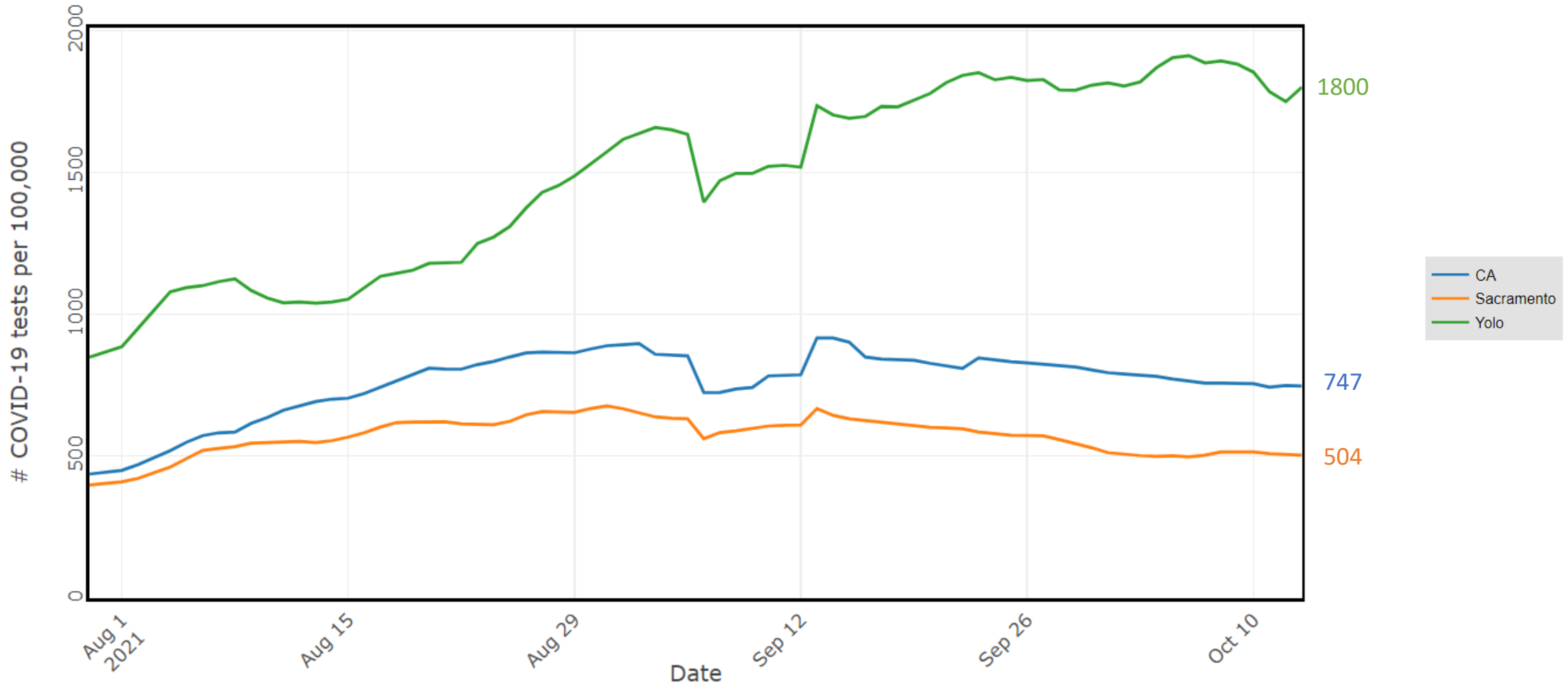
Indicator	Low Transmission Blue	Moderate Transmission Yellow	Substantial Transmission Orange	High Transmission Red
Total new cases per 100,000 persons in the past 7 days ²	0-9	10-49	50-99	≥100

Yolo's COVID-19 testing positivity is low and stable.

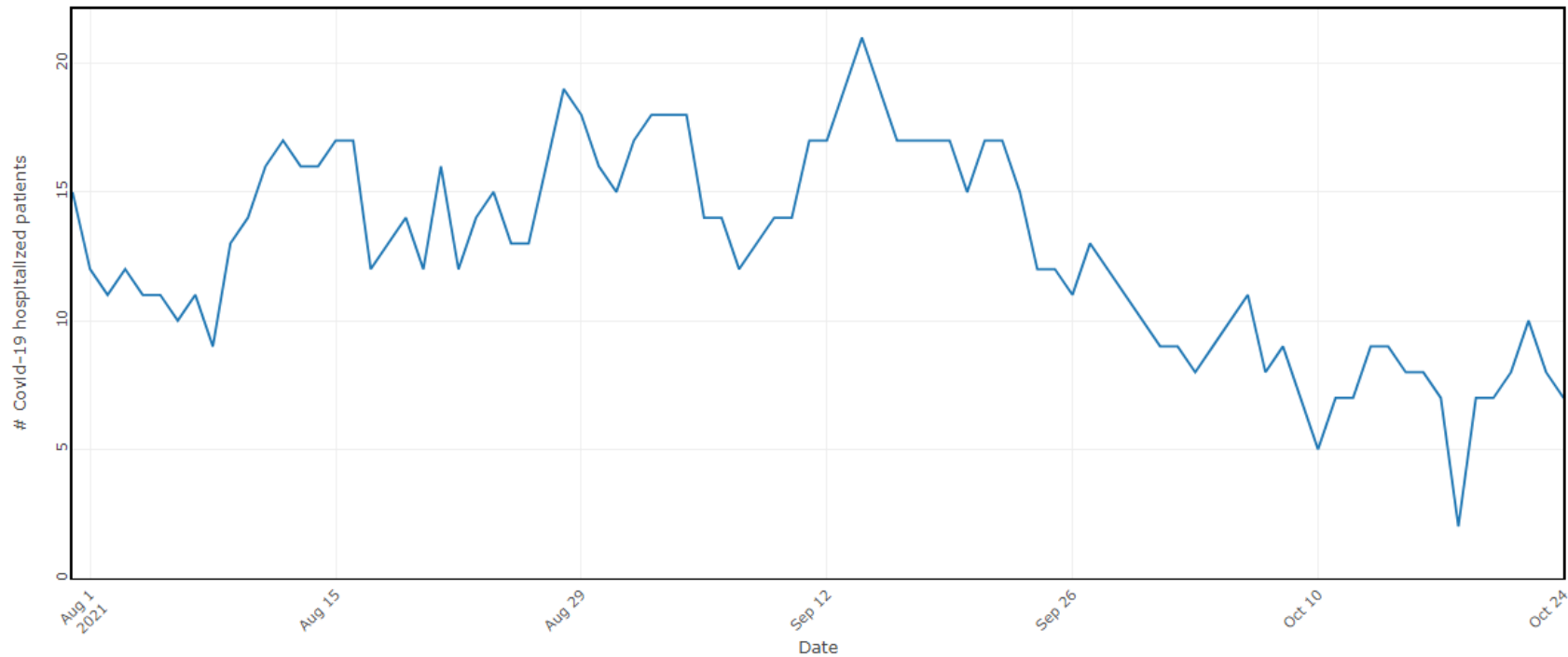


Data are lagged by 9 days

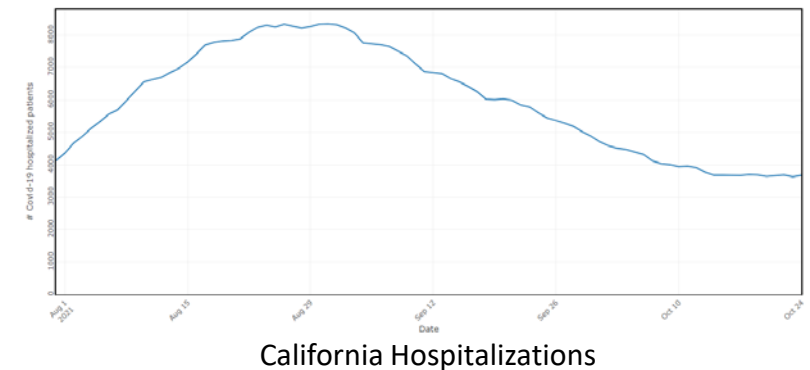
Testing volume remains high.



COVID-19 hospitalizations are relatively steady.



Date	COVID-19+ Patients in Hospital
10/11	8 (3 ICU)
10/25	7 (4 ICU)*



*On 10/25, 6/7 (86%) hospitalized COVID-19 patients were unvaccinated

Yolo County vaccination rate near state average.

Location	Age Group	% Fully Vaccinated (Change since 10/11)
Yolo County	All Ages	60.4% (+0.8%)
California	All Ages	60.9% (+1.2%)
Yolo County	12+	69.7% (+1.0%)
California	12+	71.3% (+1.3%)

Moderna and Johnson & Johnson boosters available.

- Recommend J&J booster dose for all 18+ 2 months after 1st dose
- Recommend Moderna or Pfizer booster dose 6 months after 2nd dose
 - 65+
 - Long-term care facility residents
 - 18+ with underlying conditions
 - 18+ and live or work in high-risk setting
- “Mix and match” booster allowed
 - Based on availability, preference, physician recommendation

Pfizer EUA for ages 5-11 expected early November.

- Pfizer applied for vaccine EUA for 5-11 years on October 7
- FDA panel meets October 26 to discuss data
- CDC advisory committee meets Nov 2-3 to discuss
- Western States Scientific Safety Review Workgroup will meet shortly thereafter

Previous outbreaks in congregate settings ended.

- Jail: no new cases since 10/1
- Homeless shelter: no new cases since 10/12; resumed new admissions 10/21
- Crisis nursery: last positive on site 10/1; reopened 10/18