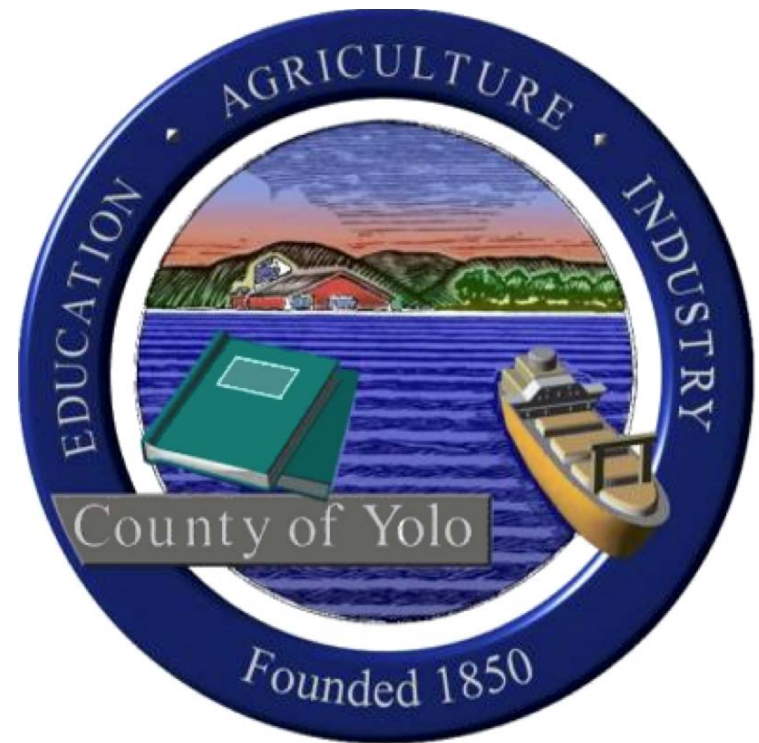


Yolo County Draft Maps



Agenda

Things we will cover:

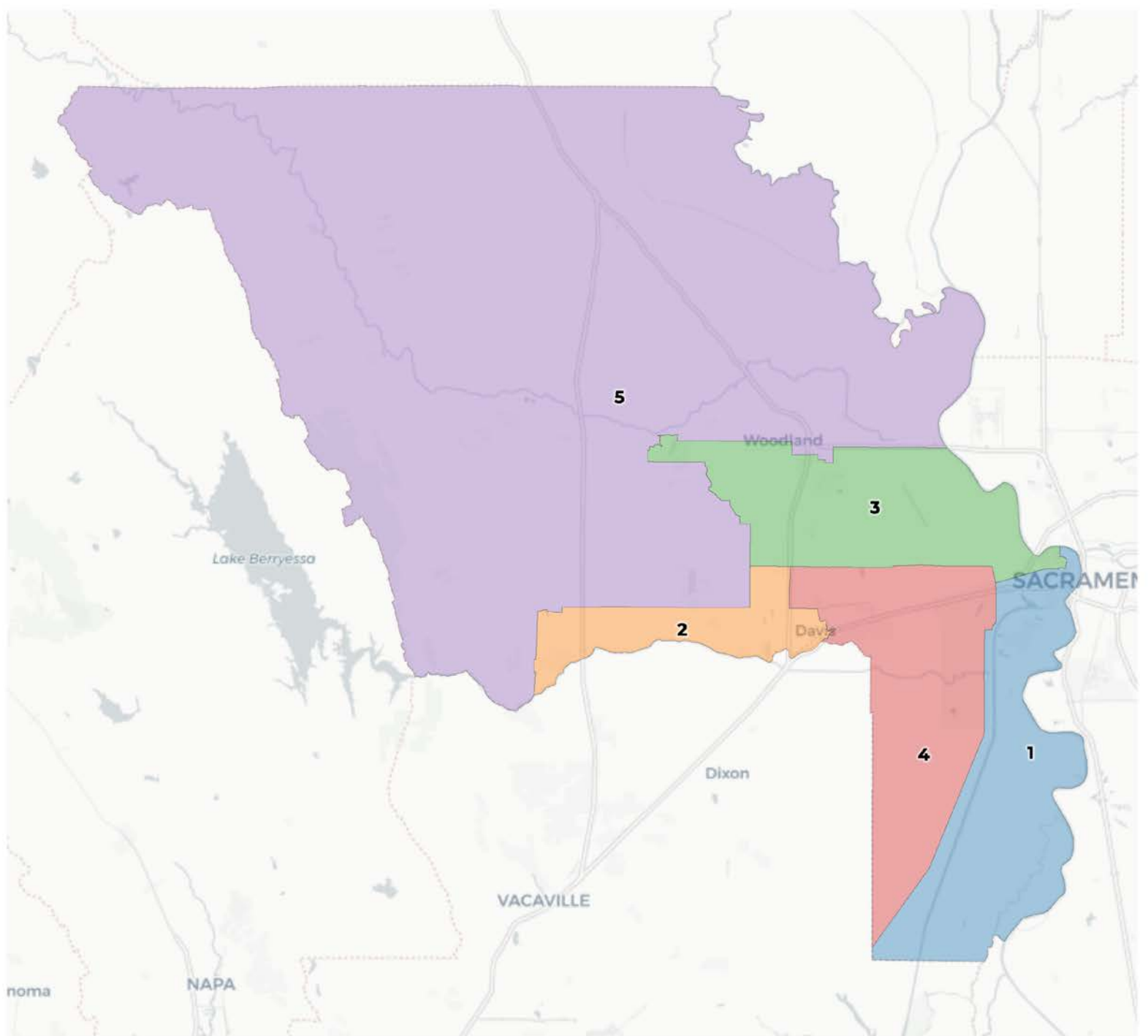
- Fair Maps Act Criteria
- Current Lines
- Three Recommend Plans from the ARC
 - Draft Map 4A
 - Draft Map 5
- Next Steps

Traditional Redistricting Principles

Complying with the Fair Maps Act

The Fair Maps Act passed by the Legislature mandates a set of criteria we must follow when drawing district plans.

- Relatively equal size - people, not citizens
- Contiguous – districts should not hop/jump
- Maintain “*communities of interest*”
- Follow city and census designated place boundaries
- Keep districts compact – appearance/function



2020 Census

	1	2	3	4	5
Population	46,164	44,330	44,239	41,685	40,504
Deviation	2,780	946	855	-1,699	-2,880
Deviation %	6.4%	2.2%	2.0%	-3.9%	-6.6%
Other	23,681	25,122	20,758	24,204	15,531
Other %	51.3%	56.7%	46.9%	58.1%	38.3%
Latino	13,769	10,587	18,839	7,007	21,746
Latino %	Total Deviation of 13.0%				53.7%
Asian					2,465
Asian %	14.0%	17.0%	8.7%	22.9%	6.1%
Black	2,250	1,071	792	922	762
Black %	4.9%	2.4%	1.8%	2.2%	1.9%

Citizen Voting Age Population (CVAP)

	1	2	3	4	5
Total CVAP	28,593	35,119	26,486	28,651	25,681
Other CVAP	17,979	21,360	16,061	19,471	13,128
Other CVAP %	62.9%	60.8%	60.6%	68.0%	51.1%
Latino CVAP	5,851	6,619	8,134	3,305	10,462
Latino CVAP %	20.5%	18.8%	30.7%	11.5%	40.7%
Asian CVAP	3,035	6,395	1,650	5,221	1,592
Asian CVAP %	10.6%	18.2%	6.2%	18.2%	6.2%
Black CVAP	1,728	745	641	654	499
Black CVAP %	6.0%	2.1%	2.4%	2.3%	1.9%

Communities of Interest

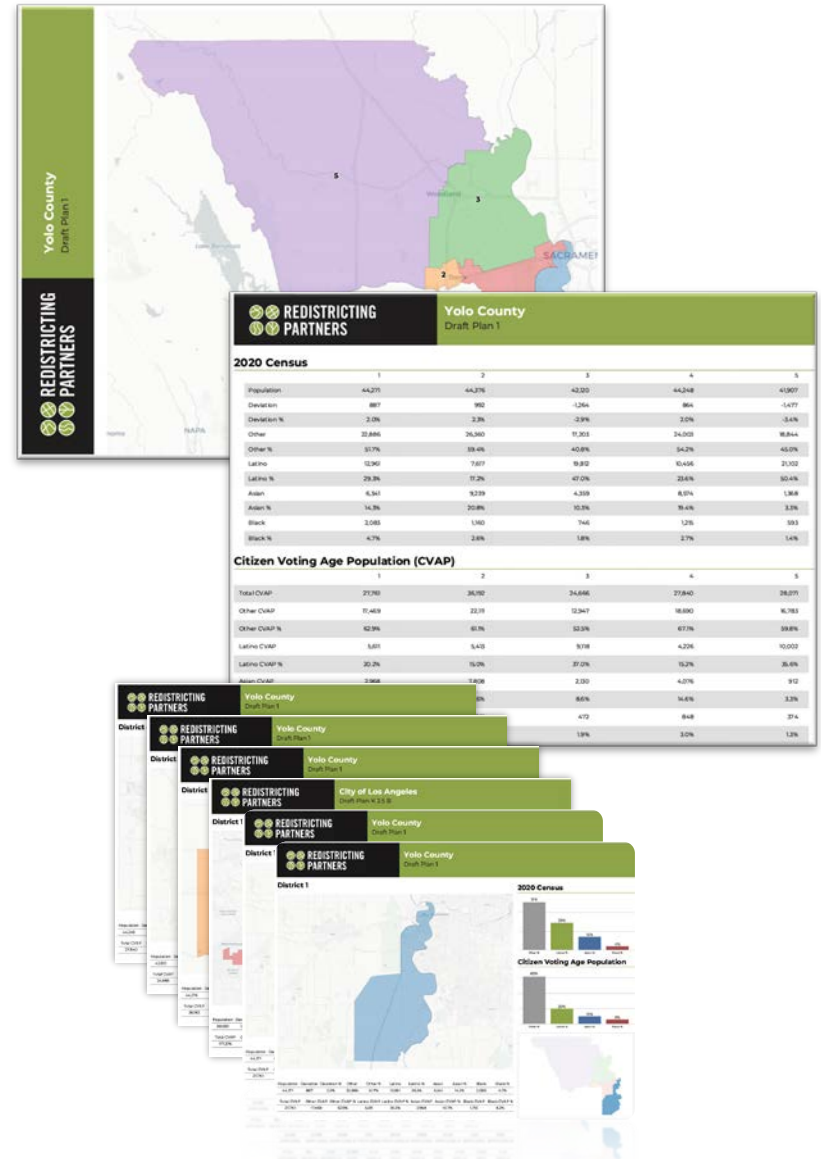
Summary of Submitted Testimonials

- Winters should be incorporated into current District 5 and with the rural, unincorporated areas of the County
- Winters should not be incorporated into District 5
- Unify all of West Sacramento into one district
- Unify Clarksburg, Knights Landing, Winters, and the Capay Valley
- Unify the rural areas together into one district

From COI to Maps

With more cities and counties using commission-based redistricting, we move redistricting out into the public, with maps driven by Community of Interest testimony.

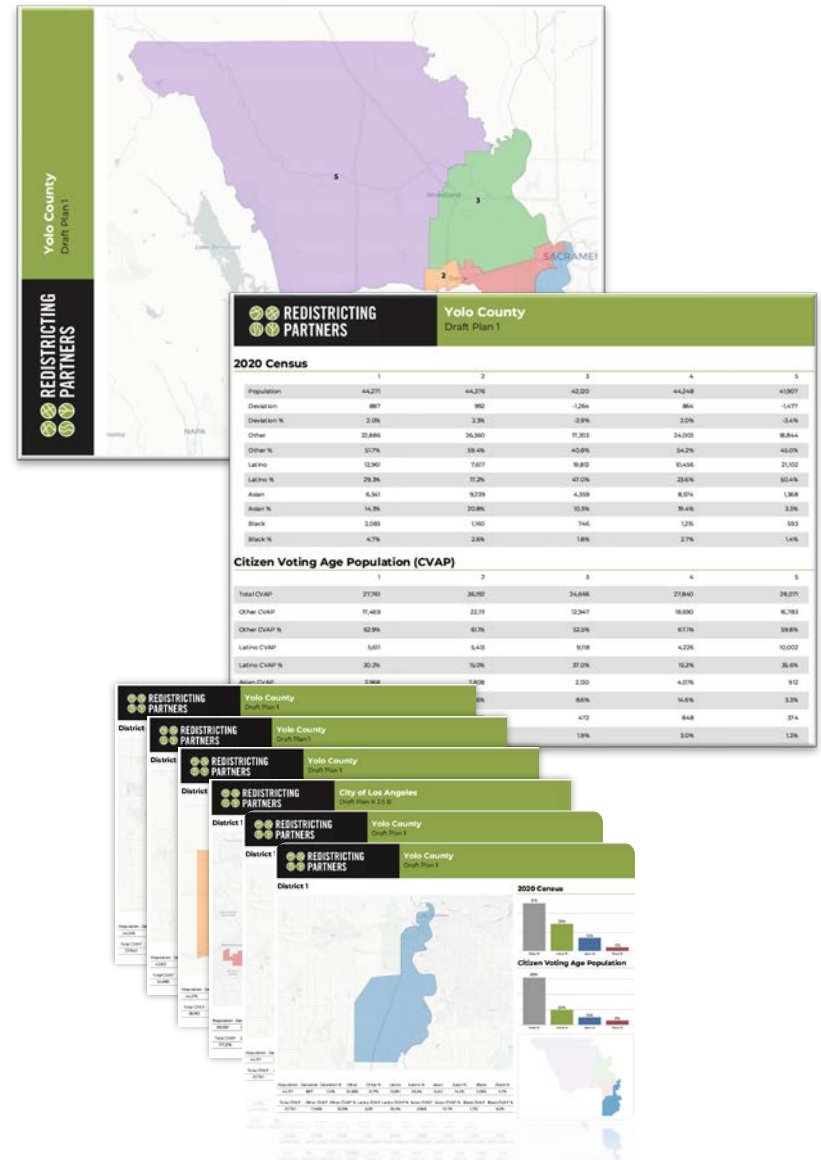
- **Input from community drives process** with multiple ways for the public to engage.
- **Rules for process** emphasize the importance of traditional criteria and minimizing divisions of neighborhoods.
- **Releasing maps for feedback** – today we will see plans to spark more public engagement.



Draft Map Plans

The County's Advisory Redistricting Commission has met over last several months, collected a breadth of community input, and has recommended three maps for the Board's consideration.

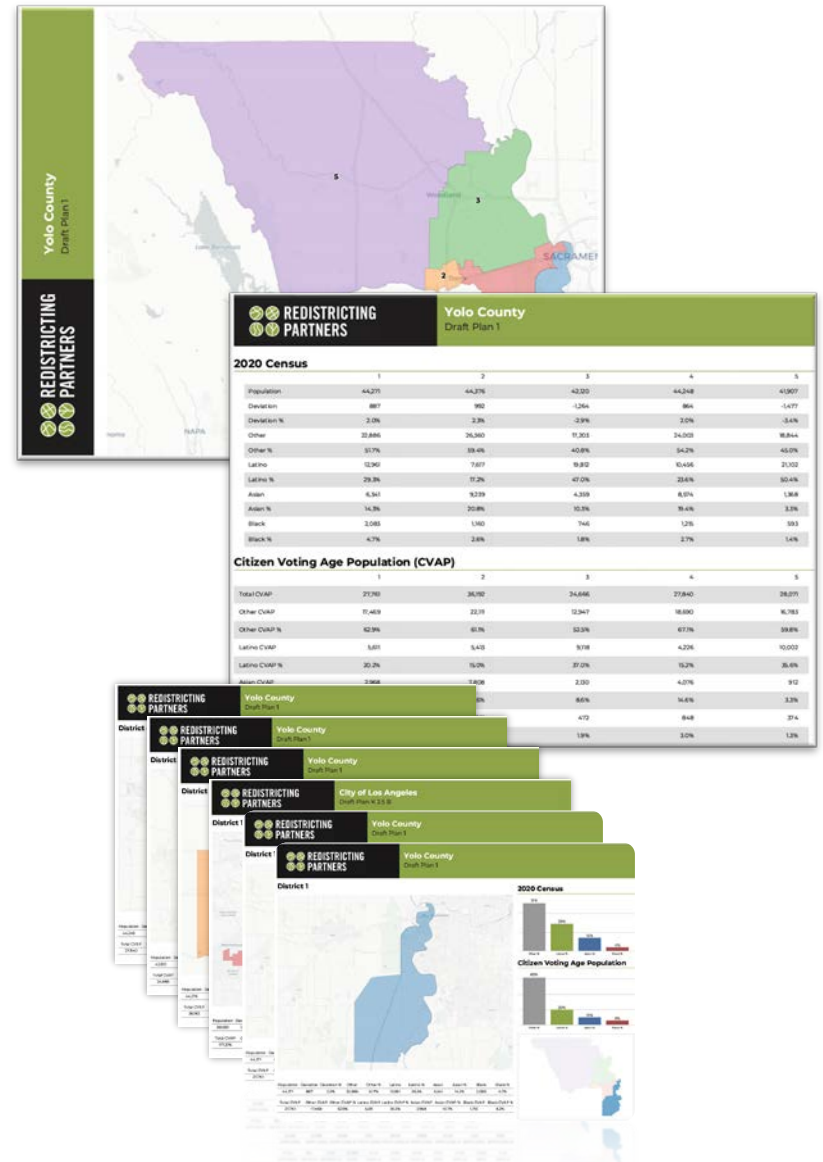
- **Draft Plan 4a** – preserves the cores of current districts with the Vic Fazio Wildlife Area unified in District 1, also unifies the Winters Fire Protection District
- **Draft Plan 5**– a map drawn by El Concilio, with changes to splitting the City of Davis and unifying the Vic Fazio Wildlife Area, also unifies the Winters Fire Protection District

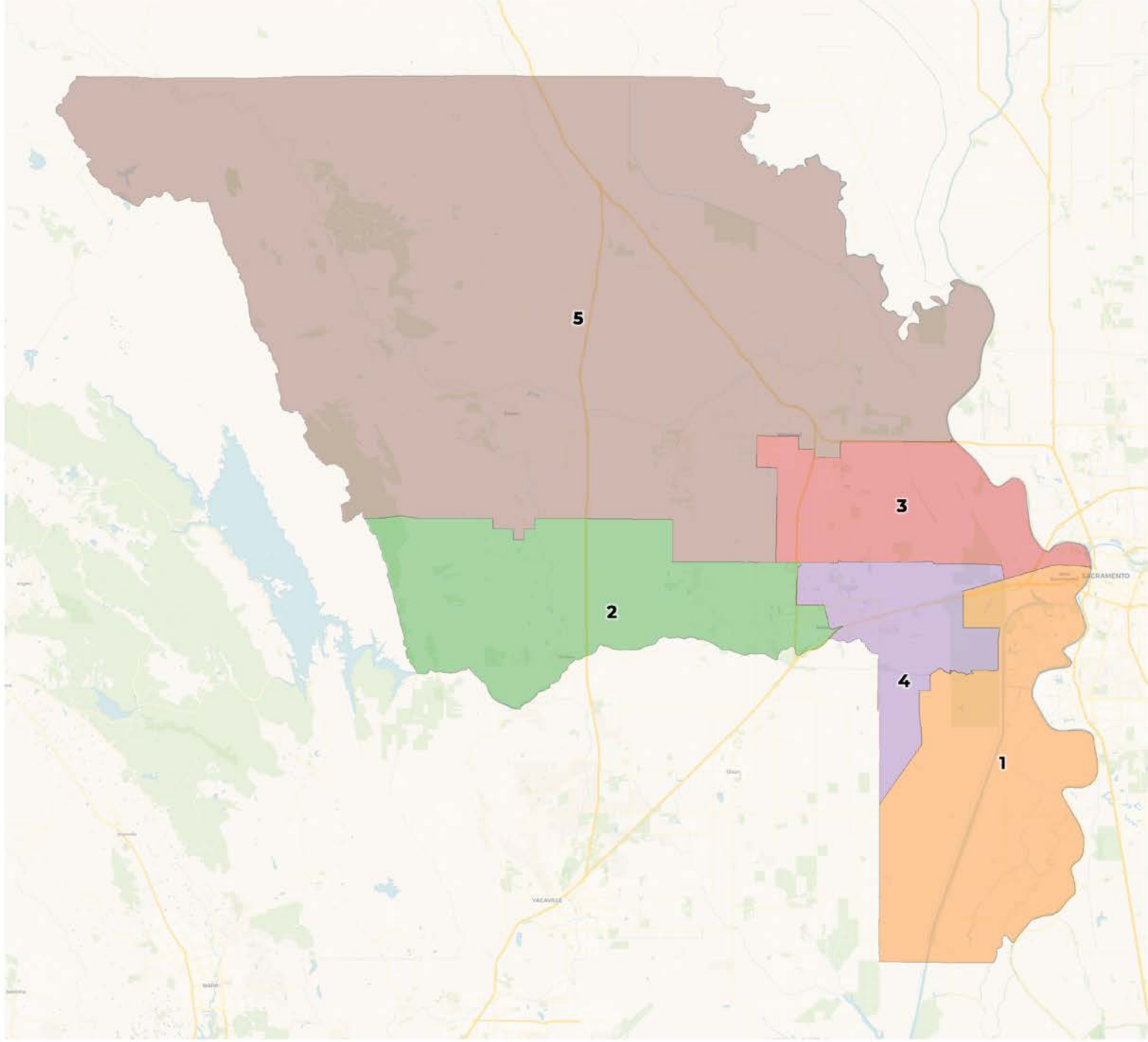


Draft Map Plans

The County’s Advisory Redistricting Commission has met over last several months, collected a breadth of community input, and has recommended three maps for the Board’s consideration.

- **Draft Plan 4a** – preserves the cores of current districts with the Vic Fazio Wildlife Area unified in District 1, also unifies the Winters Fire Protection District
- **Draft Plan 5**– a map drawn by El Concilio, with changes to splitting the City of Davis and unifying the Vic Fazio Wildlife Area, also unifies the Winters Fire Protection District





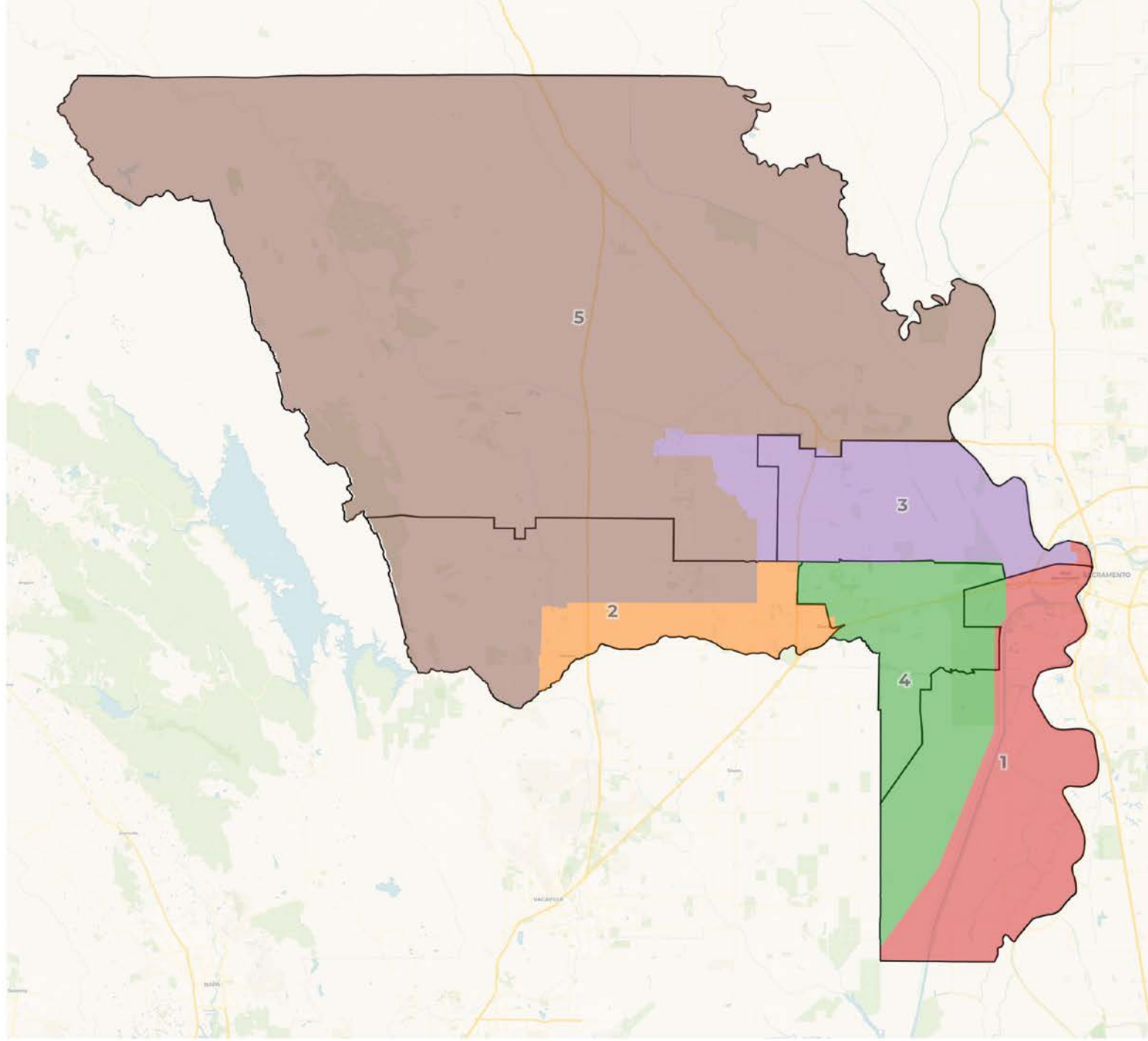
2020 Census

	1	2	3	4	5
Population	42,774	43,858	43,614	43,010	43,666
Deviation	-610	474	230	-374	282
Deviation %	-1.4%	1.1%	0.5%	-0.9%	0.7%
Other	22,139	24,986	20,581	24,939	16,651
Other %	51.8%	57.0%	47.2%	58.0%	38.1%
Latino	23,364	23,364	23,364	23,364	23,364
Latino %	53.5%	53.5%	53.5%	53.5%	53.5%
Asian	2,844	2,844	2,844	2,844	2,844
Asian %	6.5%	6.5%	6.5%	6.5%	6.5%
Black	807	807	807	807	807
Black %	1.8%	1.8%	1.8%	1.8%	1.8%

Total Deviation of 2.5%

Citizen Voting Age Population (CVAP)

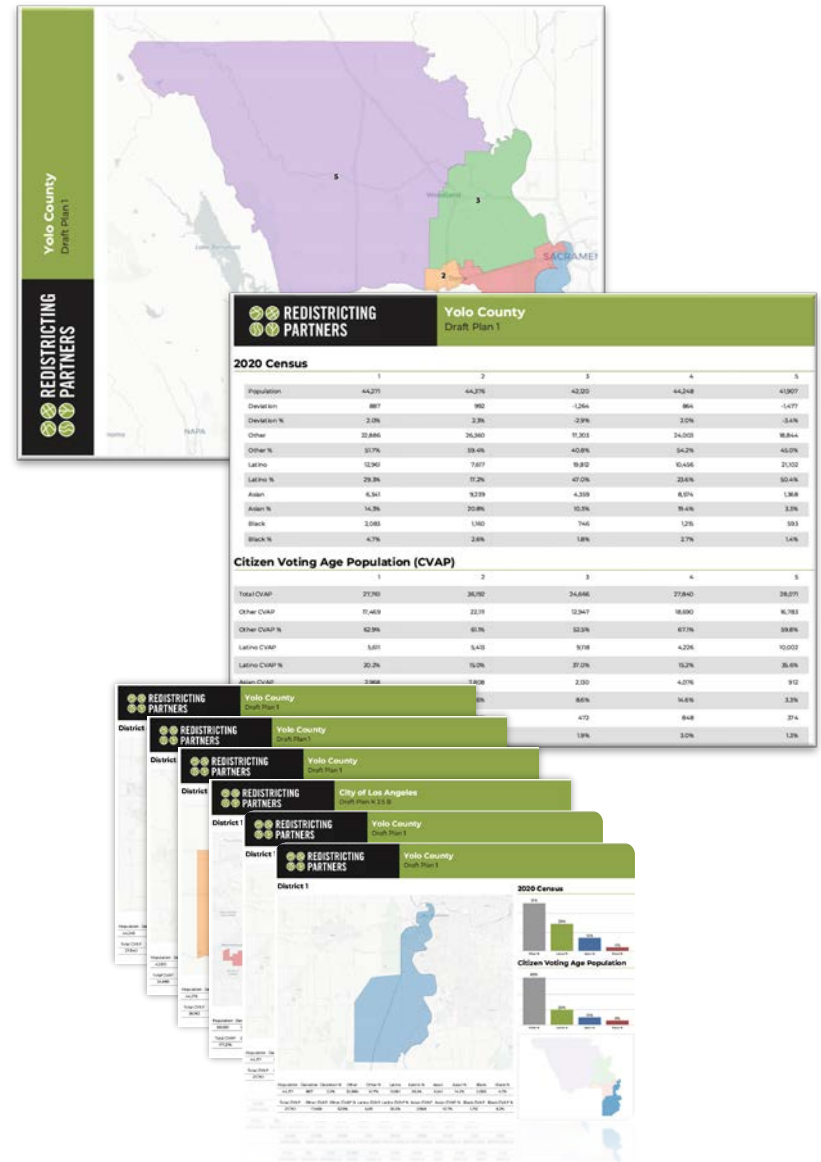
	1	2	3	4	5
Total CVAP	26,141	34,822	26,845	29,591	27,131
Other CVAP	16,702	21,173	15,903	20,121	14,100
Other CVAP %	63.9%	60.8%	59.2%	68.0%	52.0%
Latino CVAP	5,231	6,575	8,171	3,512	10,881
Latino CVAP %	20.0%	18.9%	30.4%	11.9%	40.1%
Asian CVAP	2,846	6,353	1,784	5,280	1,630
Asian CVAP %	10.9%	18.2%	6.6%	17.8%	6.0%
Black CVAP	1,360	720	987	678	521
Black CVAP %	5.2%	2.1%	3.7%	2.3%	1.9%

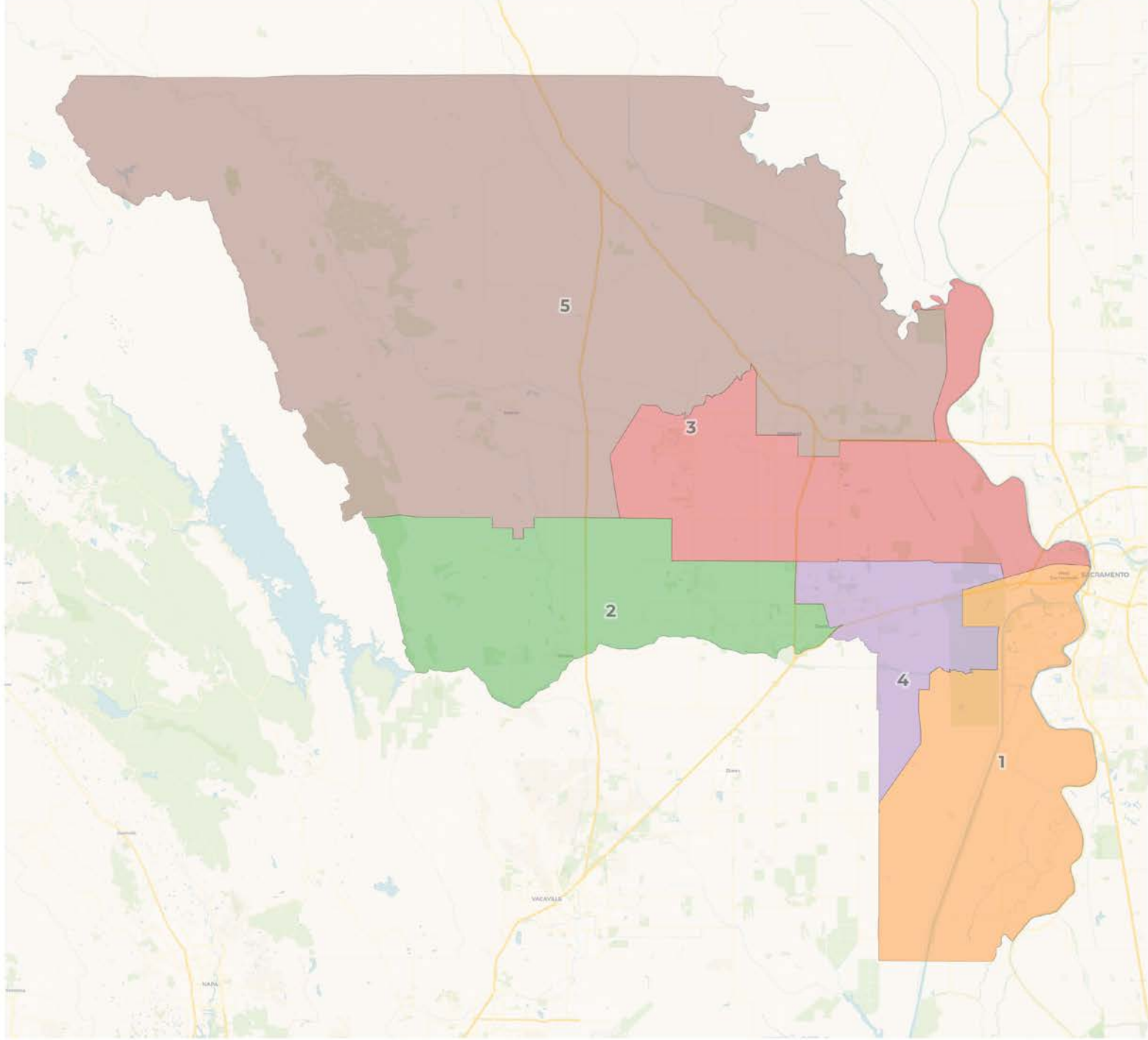


Draft Map Plans

The County's Advisory Redistricting Commission has met over last several months, collected a breadth of community input, and has recommended three maps for the Board's consideration.

- **Draft Plan 4a** – preserves the cores of current districts with the Vic Fazio Wildlife Area unified in District 1, also unifies the Winters Fire Protection District
- **Draft Plan 5**– a map drawn by El Concilio, with changes to splitting the City of Davis and unifying the Vic Fazio Wildlife Area, also unifies the Winters Fire Protection District





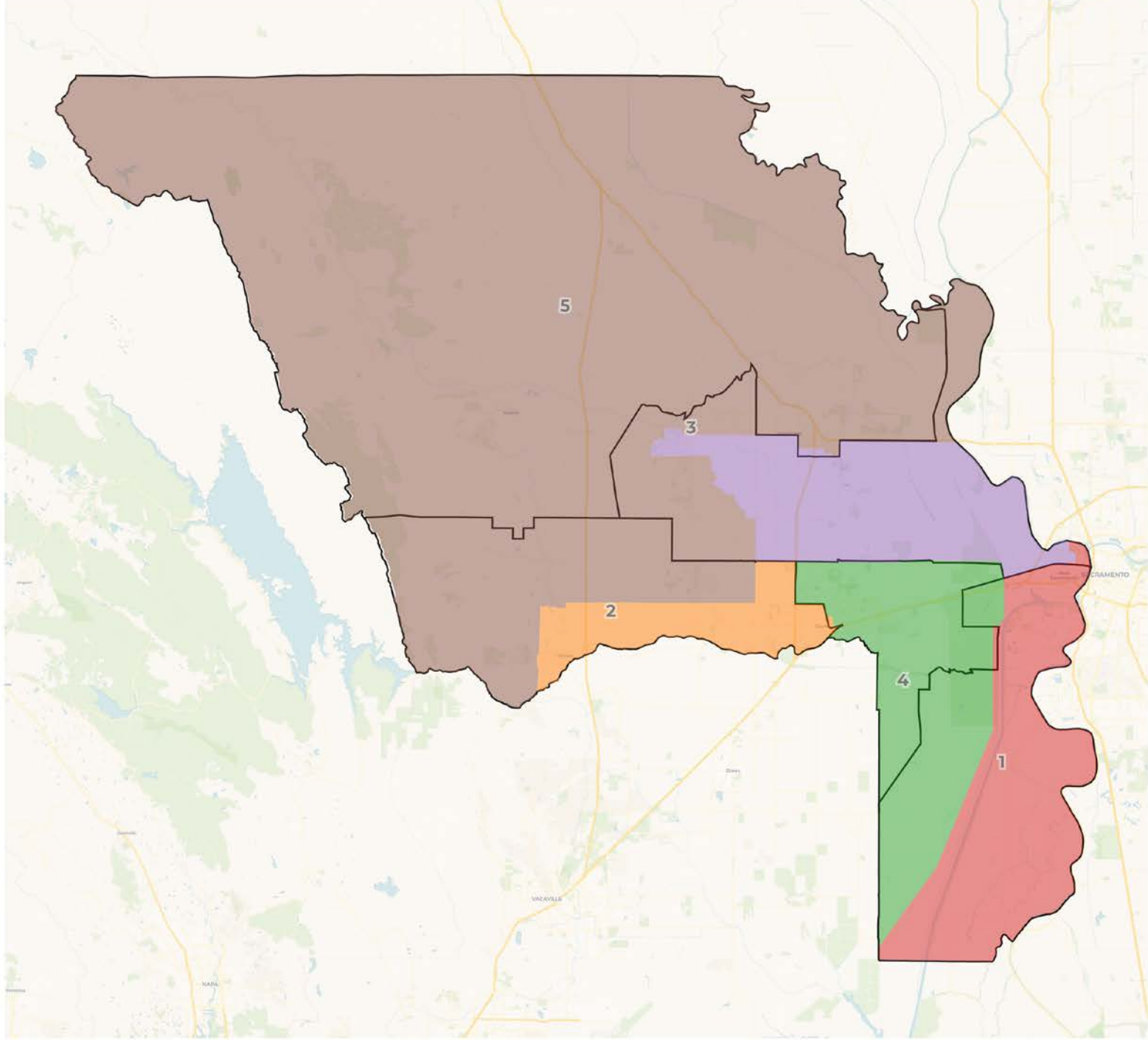
2020 Census

	1	2	3	4	5
Population	42,774	43,851	43,766	43,022	43,509
Deviation	-610	467	382	-362	125
Deviation %	-1.4%	1.1%	0.9%	-0.8%	0.3%
Other	22,139	24,981	21,759	24,945	15,472
Other %	51.8%	57.0%	49.7%	58.0%	35.6%
Latino					24,157
Latino %					55.5%
Asian					3,054
Asian %	14.4%	16.9%	8.1%	22.6%	7.0%
Black	2,024	1,042	949	956	826
Black %	4.7%	2.4%	2.2%	2.2%	1.9%

Total Deviation of 2.5%

Citizen Voting Age Population (CVAP)

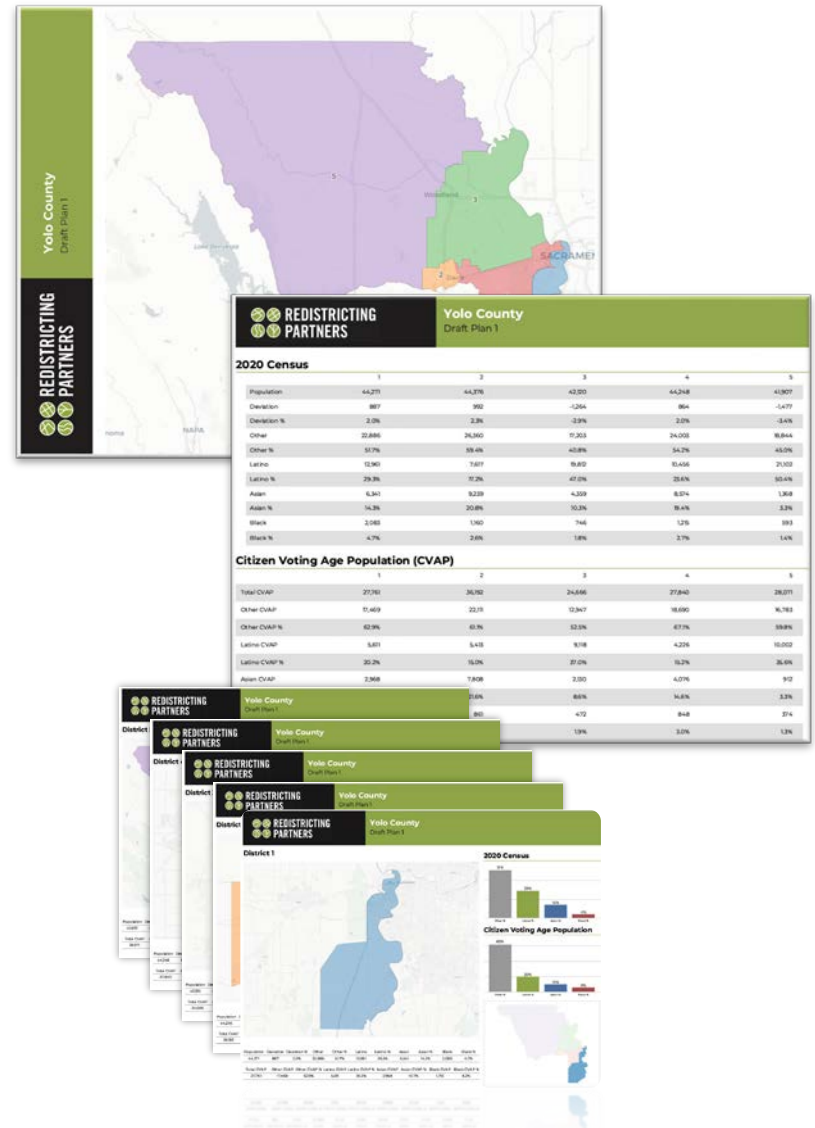
	1	2	3	4	5
Total CVAP	26,141	34,813	27,389	29,600	26,587
Other CVAP	16,702	21,169	16,876	20,125	13,127
Other CVAP %	63.9%	60.8%	61.6%	68.0%	49.4%
Latino CVAP	5,231	6,573	7,884	3,513	11,168
Latino CVAP %	20.0%	18.9%	28.8%	11.9%	42.0%
Asian CVAP	2,846	6,350	1,655	5,284	1,759
Asian CVAP %	10.9%	18.2%	6.0%	17.8%	6.6%
Black CVAP	1,360	720	975	679	533
Black CVAP %	5.2%	2.1%	3.6%	2.3%	2.0%



What's Next

The Board of Supervisors needs to select a plan.

- **Identify preferred plan(s)** with an understanding that none of these are final plans. *It is an iterative process.*
- **Suggest possible changes –** Redistricting Partners can provide adjustments to the boundaries of any number of the draft plans.
- **Provide direction** for the preparation of **new draft map(s)** to be put out for public input and future Board review.

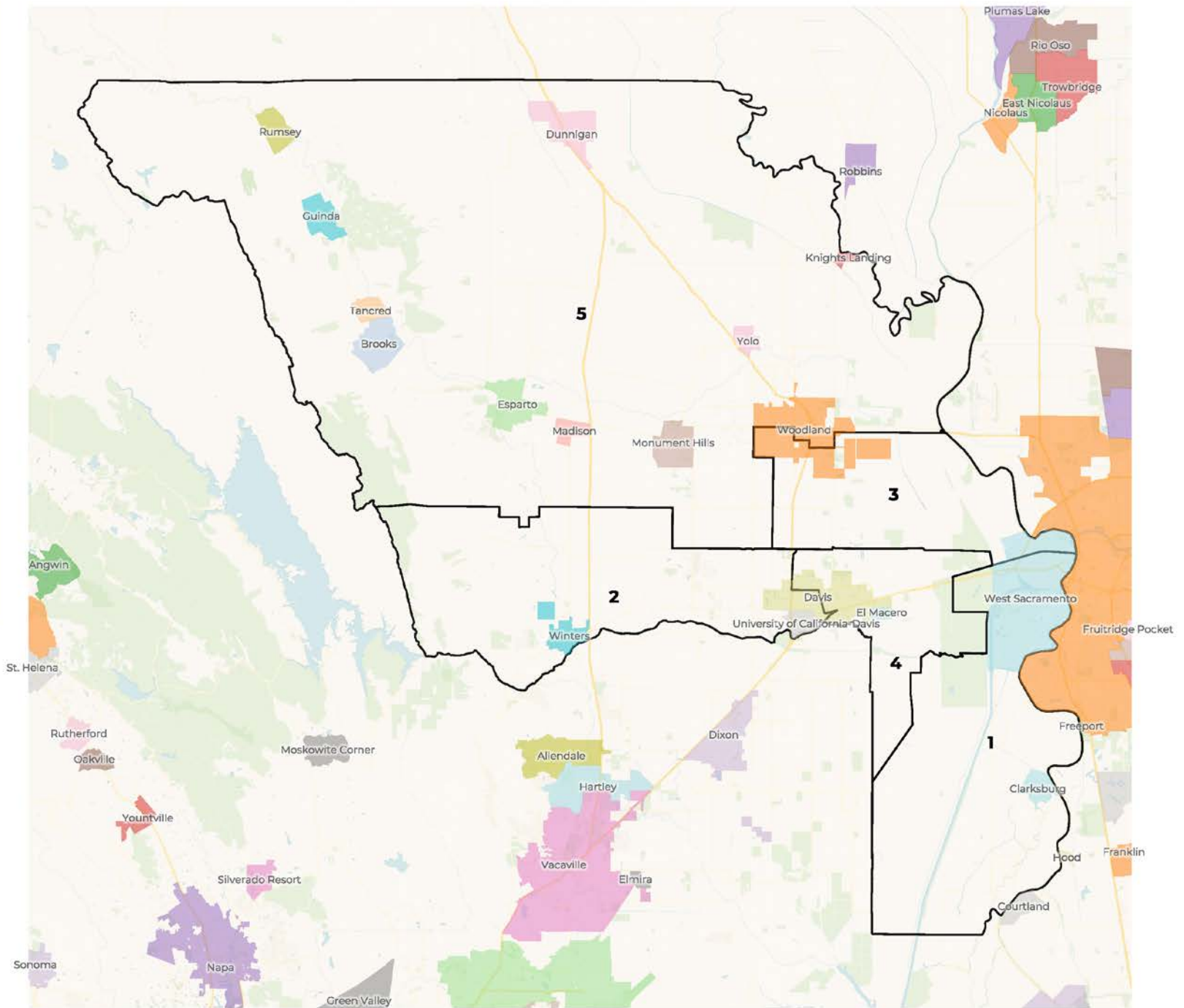




REDISTRICTING PARTNERS

REDISTRICTING PARTNERS

Yolo County Draft Plan 4a with Cities



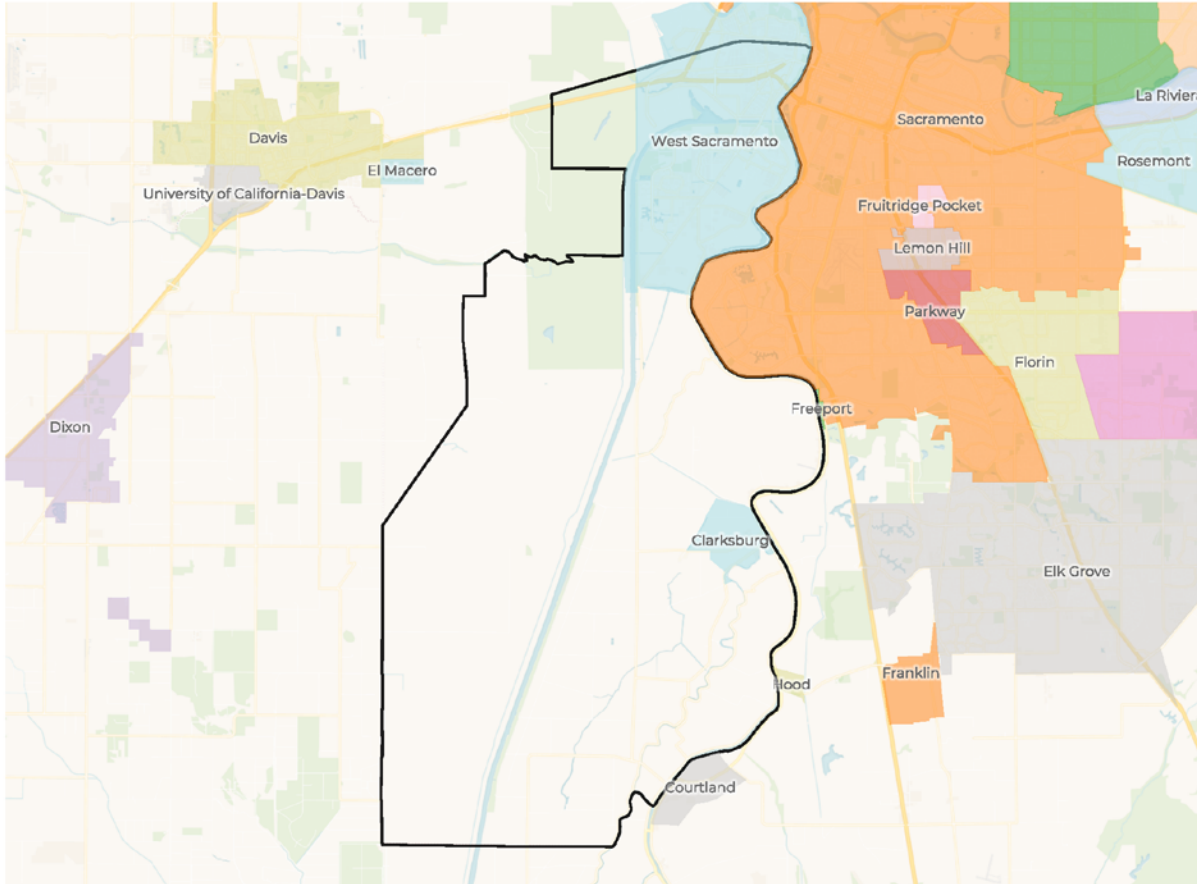
2020 Census

	1	2	3	4	5
Population	42,774	43,858	43,614	43,010	43,666
Deviation	-610	474	230	-374	282
Deviation %	-1.4%	1.1%	0.5%	-0.9%	0.7%
Other	22,139	24,986	20,581	24,939	16,651
Other %	51.8%	57.0%	47.2%	58.0%	38.1%
Latino	12,448	10,428	18,326	7,382	23,364
Latino %	29.1%	23.8%	42.0%	17.2%	53.5%
Asian	6,163	7,404	3,737	9,733	2,844
Asian %	14.4%	16.9%	8.6%	22.6%	6.5%
Black	2,024	1,040	970	956	807
Black %	4.7%	2.4%	2.2%	2.2%	1.8%

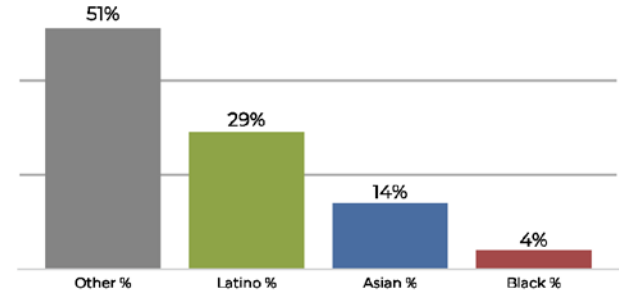
Citizen Voting Age Population (CVAP)

	1	2	3	4	5
Total CVAP	26,141	34,822	26,845	29,591	27,131
Other CVAP	16,702	21,173	15,903	20,121	14,100
Other CVAP %	63.9%	60.8%	59.2%	68.0%	52.0%
Latino CVAP	5,231	6,575	8,171	3,512	10,881
Latino CVAP %	20.0%	18.9%	30.4%	11.9%	40.1%
Asian CVAP	2,846	6,353	1,784	5,280	1,630
Asian CVAP %	10.9%	18.2%	6.6%	17.8%	6.0%
Black CVAP	1,360	720	987	678	521
Black CVAP %	5.2%	2.1%	3.7%	2.3%	1.9%

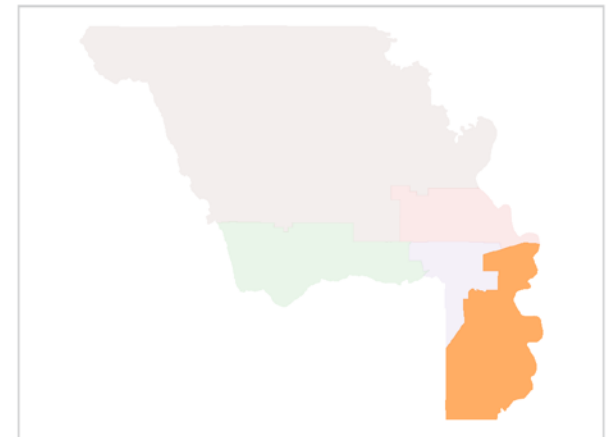
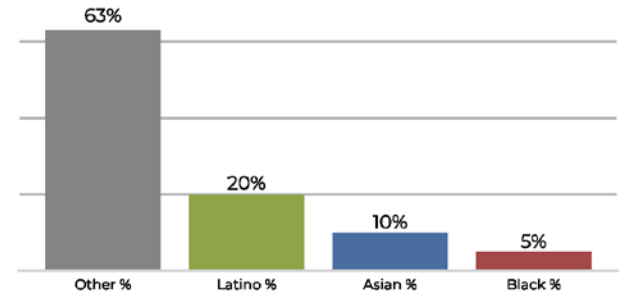
District 1



2020 Census

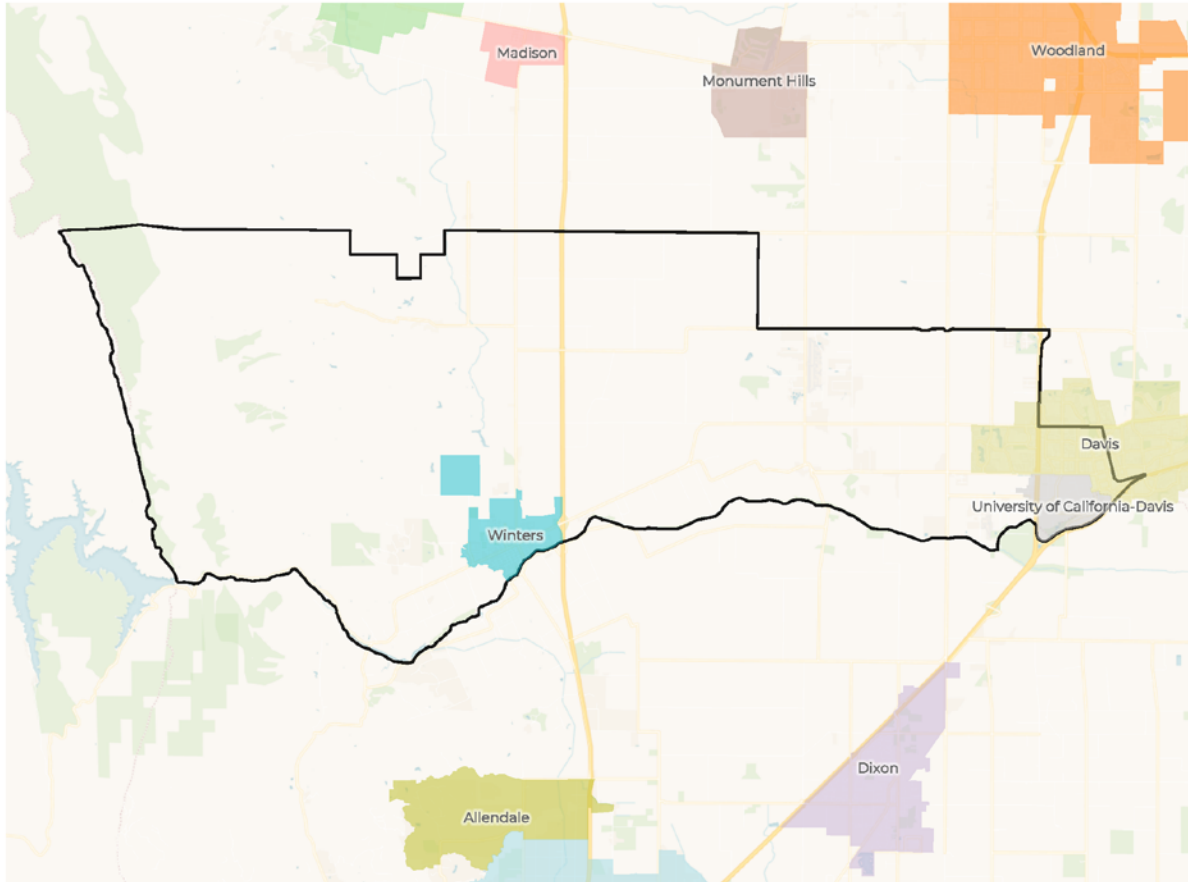


Citizen Voting Age Population

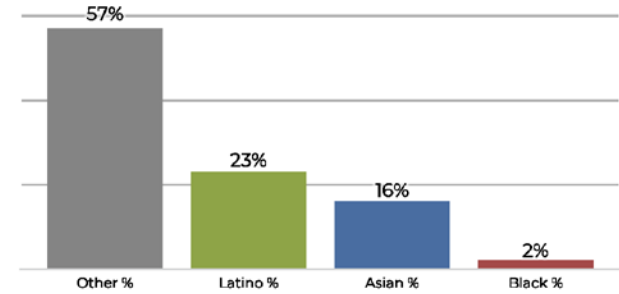


Population	Deviation	Deviation %	Other	Other %	Latino	Latino %	Asian	Asian %	Black	Black %
42,774	-610	-1.4%	22,139	51.8%	12,448	29.1%	6,163	14.4%	2,024	4.7%
Total CVAP	Other CVAP	Other CVAP %	Latino CVAP	Latino CVAP %	Asian CVAP	Asian CVAP %	Black CVAP	Black CVAP %		
26,141	16,702	63.9%	5,231	20.0%	2,846	10.9%	1,360	5.2%		

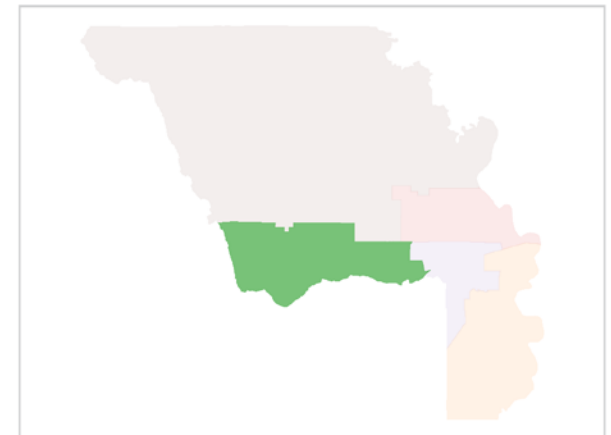
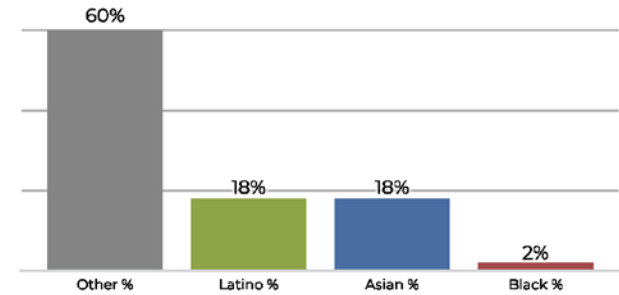
District 2



2020 Census

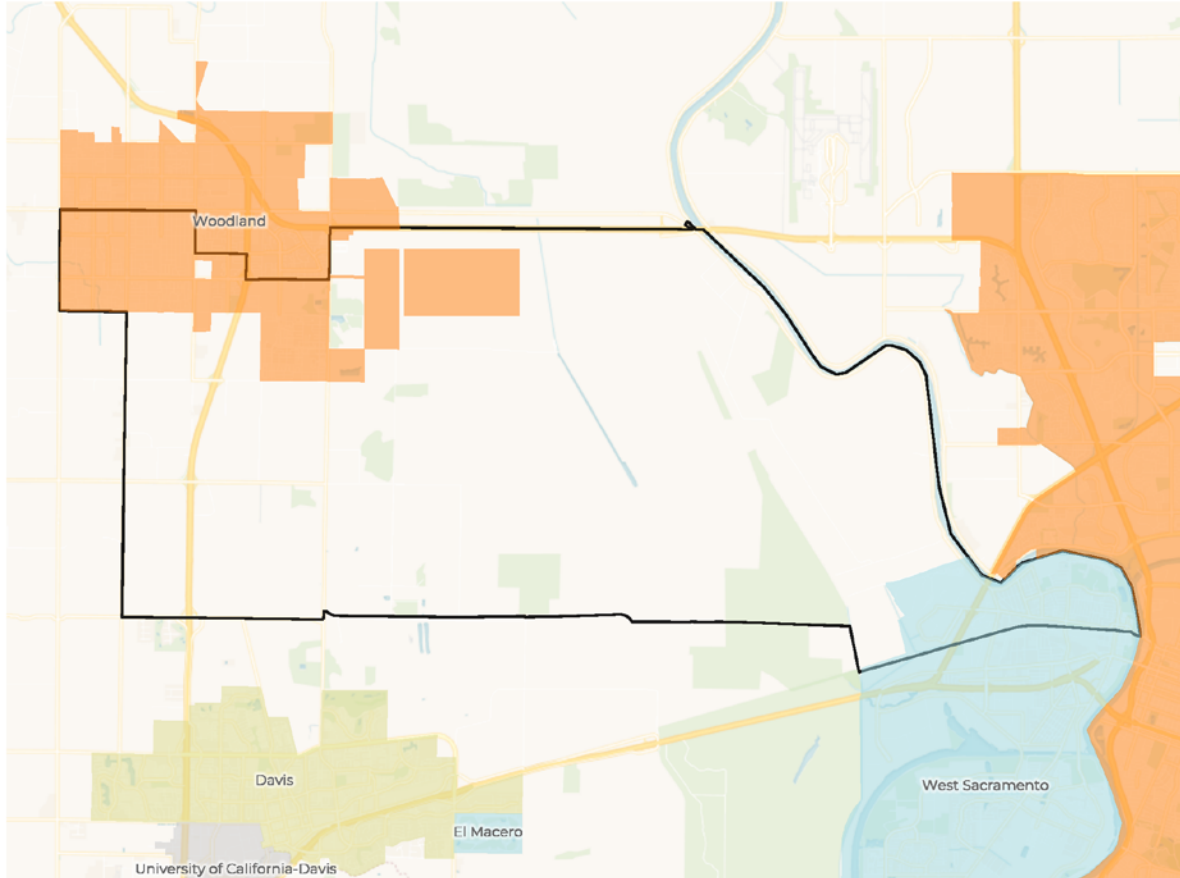


Citizen Voting Age Population

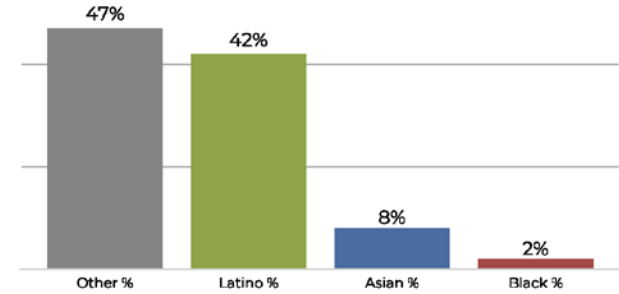


Population	Deviation	Deviation %	Other	Other %	Latino	Latino %	Asian	Asian %	Black	Black %
43,858	474	1.1%	24,986	57.0%	10,428	23.8%	7,404	16.9%	1,040	2.4%
Total CVAP	Other CVAP	Other CVAP %	Latino CVAP	Latino CVAP %	Asian CVAP	Asian CVAP %	Black CVAP	Black CVAP %		
34,822	21,173	60.8%	6,575	18.9%	6,353	18.2%	720	2.1%		

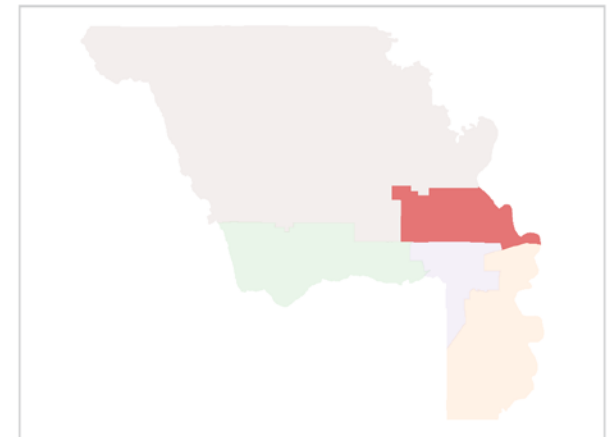
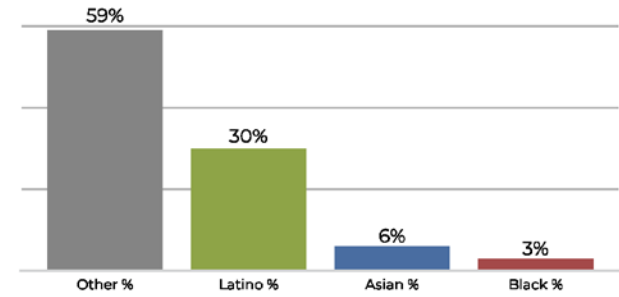
District 3



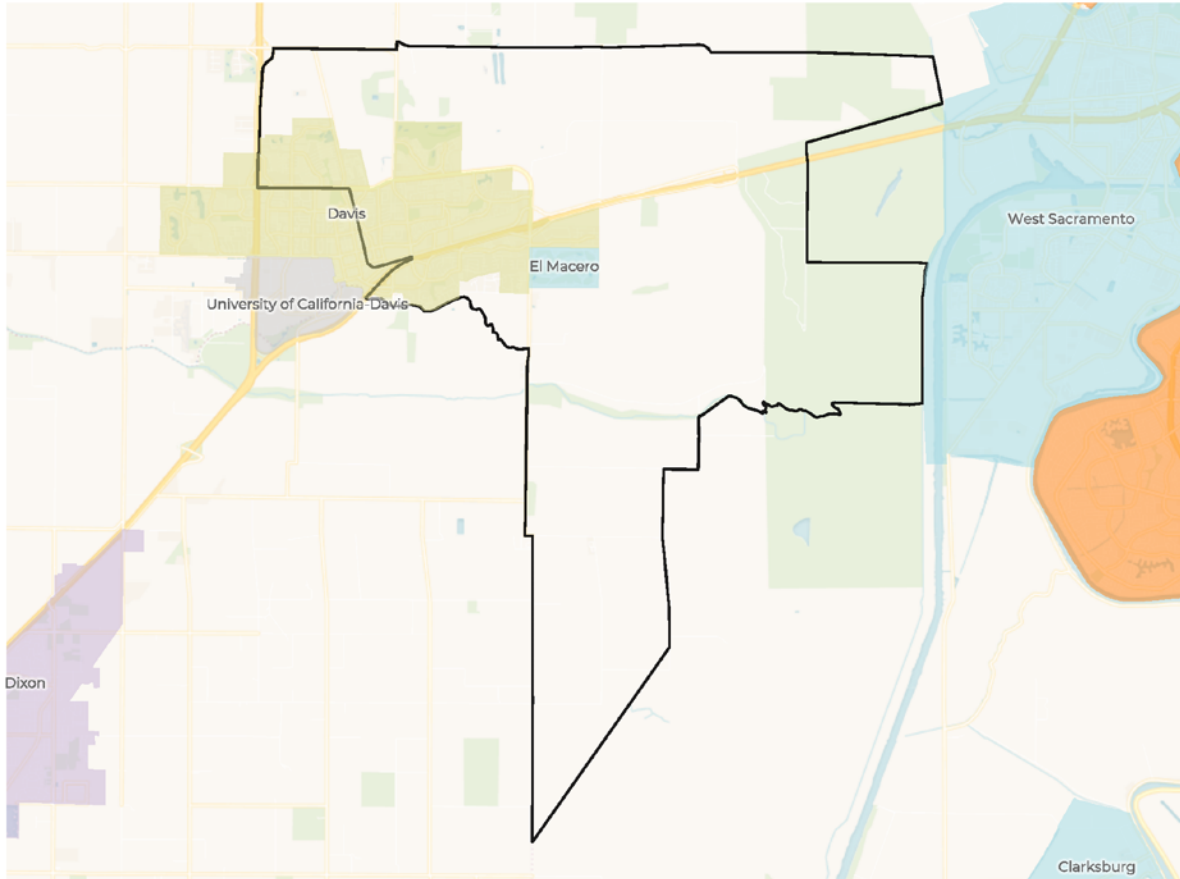
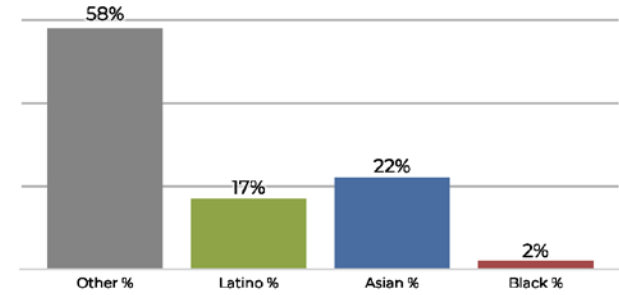
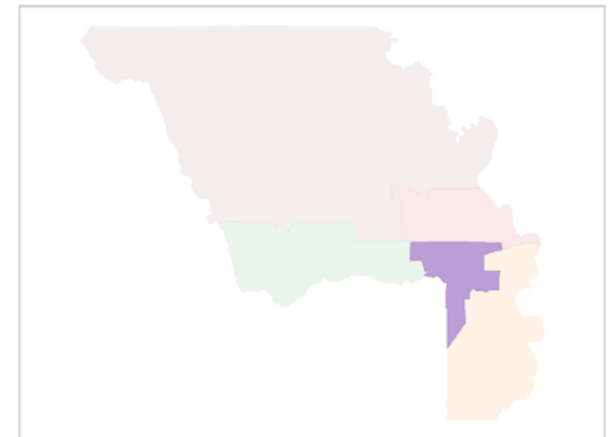
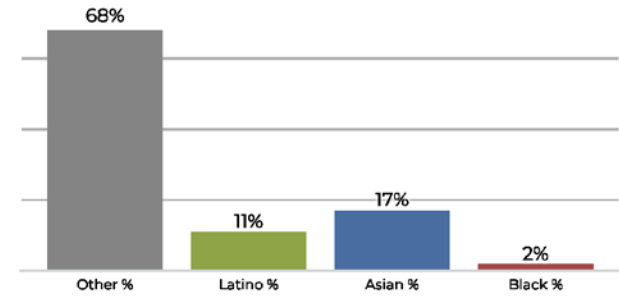
2020 Census



Citizen Voting Age Population

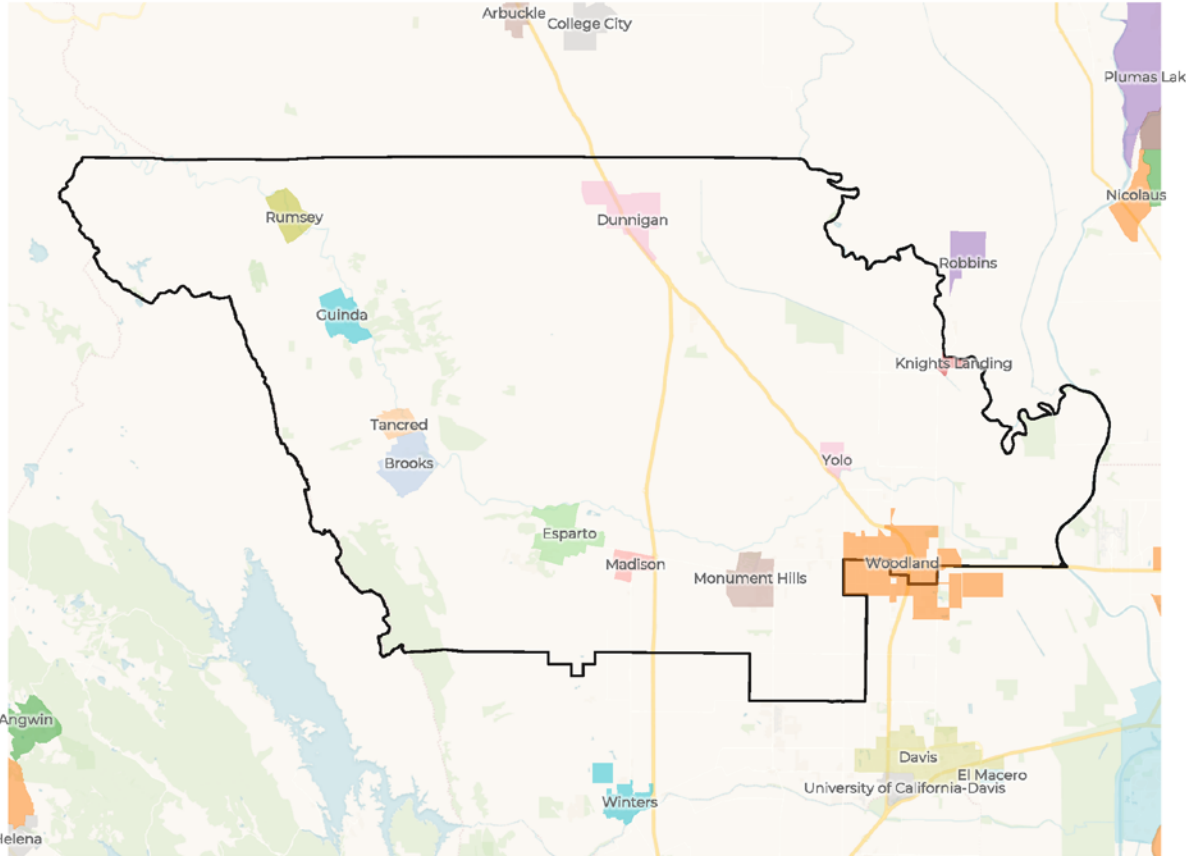


Population	Deviation	Deviation %	Other	Other %	Latino	Latino %	Asian	Asian %	Black	Black %
43,614	230	0.5%	20,581	47.2%	18,326	42.0%	3,737	8.6%	970	2.2%
Total CVAP	Other CVAP	Other CVAP %	Latino CVAP	Latino CVAP %	Asian CVAP	Asian CVAP %	Black CVAP	Black CVAP %		
26,845	15,903	59.2%	8,171	30.4%	1,784	6.6%	987	3.7%		

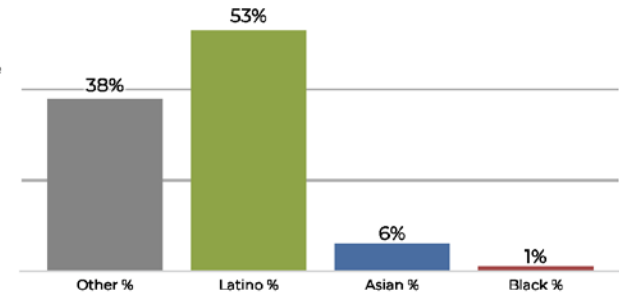
District 4

2020 Census

Citizen Voting Age Population


Population	Deviation	Deviation %	Other	Other %	Latino	Latino %	Asian	Asian %	Black	Black %
43,010	-374	-0.9%	24,939	58.0%	7,382	17.2%	9,733	22.6%	956	2.2%
Total CVAP	Other CVAP	Other CVAP %	Latino CVAP	Latino CVAP %	Asian CVAP	Asian CVAP %	Black CVAP	Black CVAP %		
29,591	20,121	68.0%	3,512	11.9%	5,280	17.8%	678	2.3%		

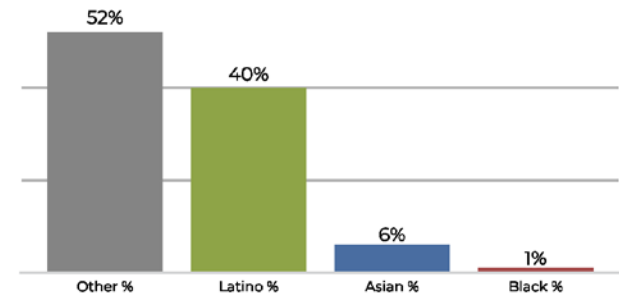
District 5



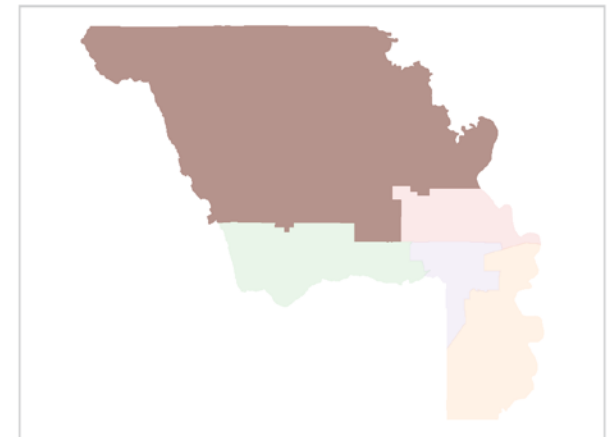
2020 Census



Citizen Voting Age Population

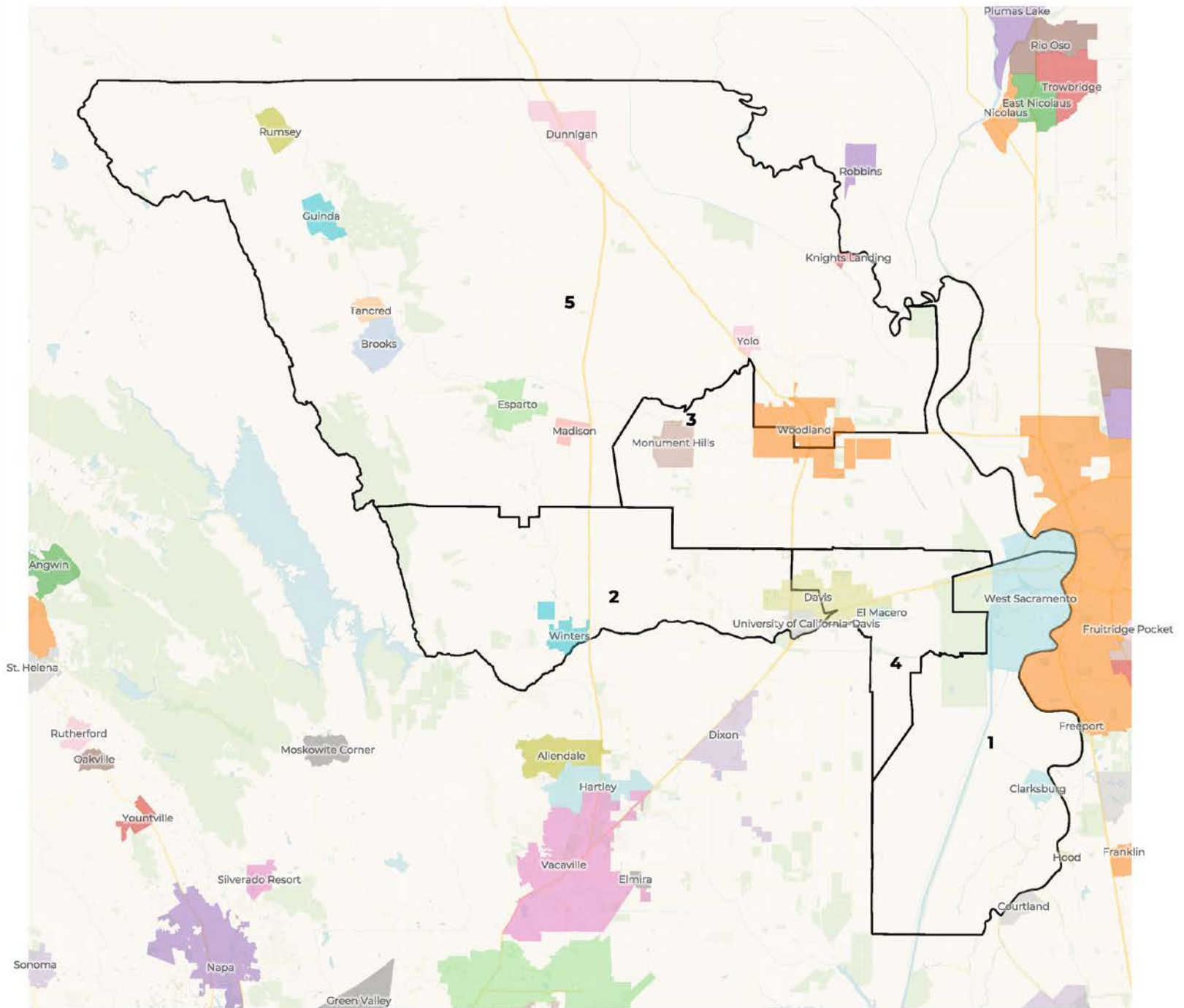


Population	Deviation	Deviation %	Other	Other %	Latino	Latino %	Asian	Asian %	Black	Black %
43,666	282	0.7%	16,651	38.1%	23,364	53.5%	2,844	6.5%	807	1.8%
Total CVAP	Other CVAP	Other CVAP %	Latino CVAP	Latino CVAP %	Asian CVAP	Asian CVAP %	Black CVAP	Black CVAP %		
27,131	14,100	52.0%	10,881	40.1%	1,630	6.0%	521	1.9%		



REDISTRICTING PARTNERS

Yolo County Draft Plan 5 with Cities



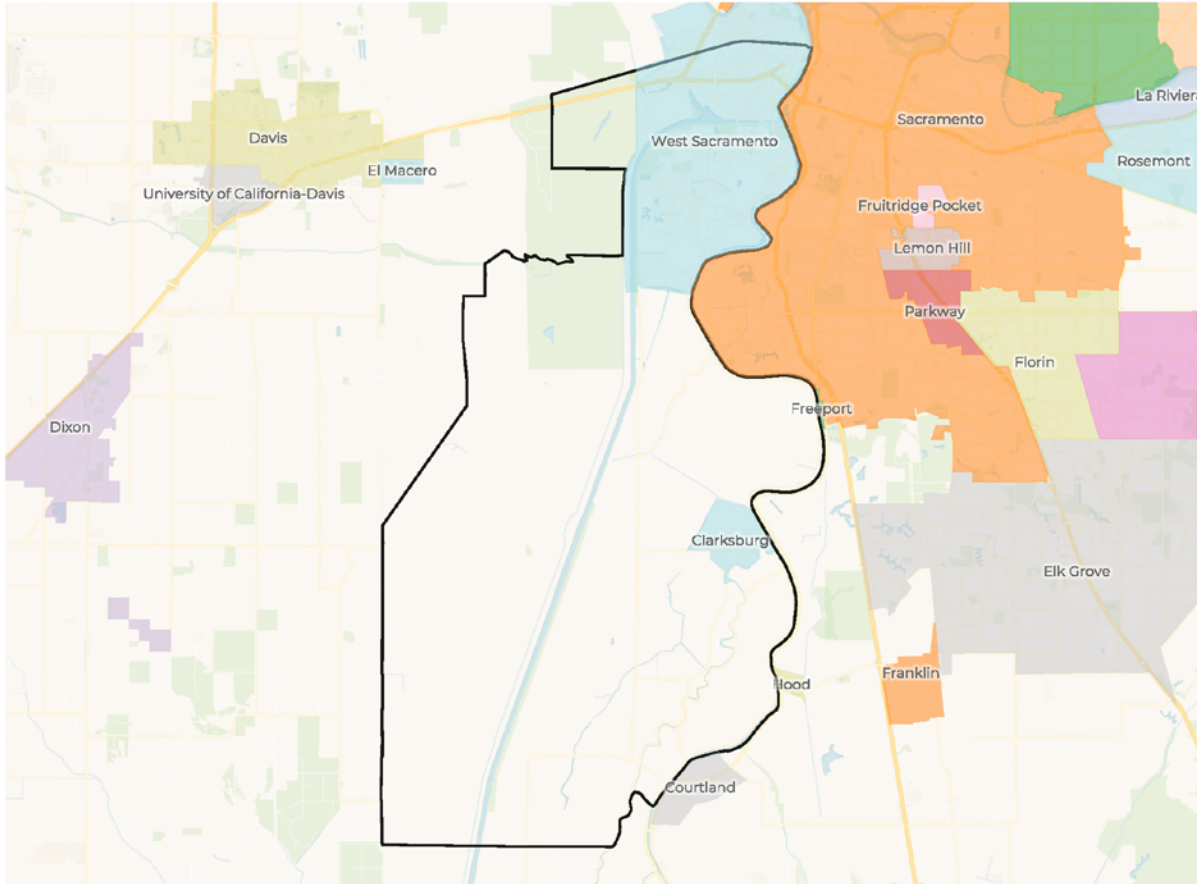
2020 Census

	1	2	3	4	5
Population	42,774	43,851	43,766	43,022	43,509
Deviation	-610	467	382	-362	125
Deviation %	-1.4%	1.1%	0.9%	-0.8%	0.3%
Other	22,139	24,981	21,759	24,945	15,472
Other %	51.8%	57.0%	49.7%	58.0%	35.6%
Latino	12,448	10,424	17,531	7,388	24,157
Latino %	29.1%	23.8%	40.1%	17.2%	55.5%
Asian	6,163	7,404	3,527	9,733	3,054
Asian %	14.4%	16.9%	8.1%	22.6%	7.0%
Black	2,024	1,042	949	956	826
Black %	4.7%	2.4%	2.2%	2.2%	1.9%

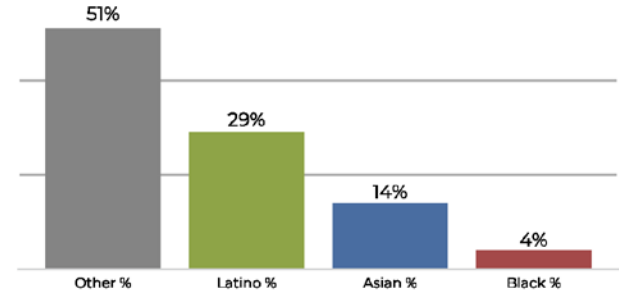
Citizen Voting Age Population (CVAP)

	1	2	3	4	5
Total CVAP	26,141	34,813	27,389	29,600	26,587
Other CVAP	16,702	21,169	16,876	20,125	13,127
Other CVAP %	63.9%	60.8%	61.6%	68.0%	49.4%
Latino CVAP	5,231	6,573	7,884	3,513	11,168
Latino CVAP %	20.0%	18.9%	28.8%	11.9%	42.0%
Asian CVAP	2,846	6,350	1,655	5,284	1,759
Asian CVAP %	10.9%	18.2%	6.0%	17.8%	6.6%
Black CVAP	1,360	720	975	679	533
Black CVAP %	5.2%	2.1%	3.6%	2.3%	2.0%

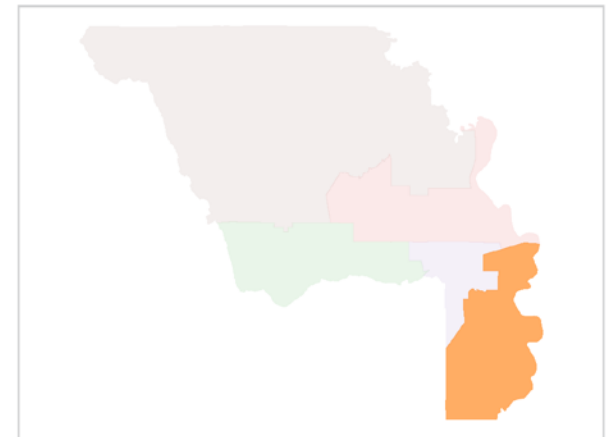
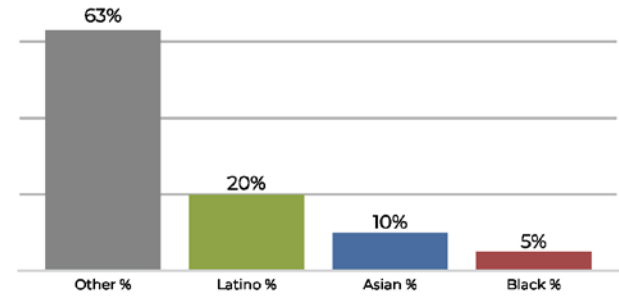
District 1



2020 Census

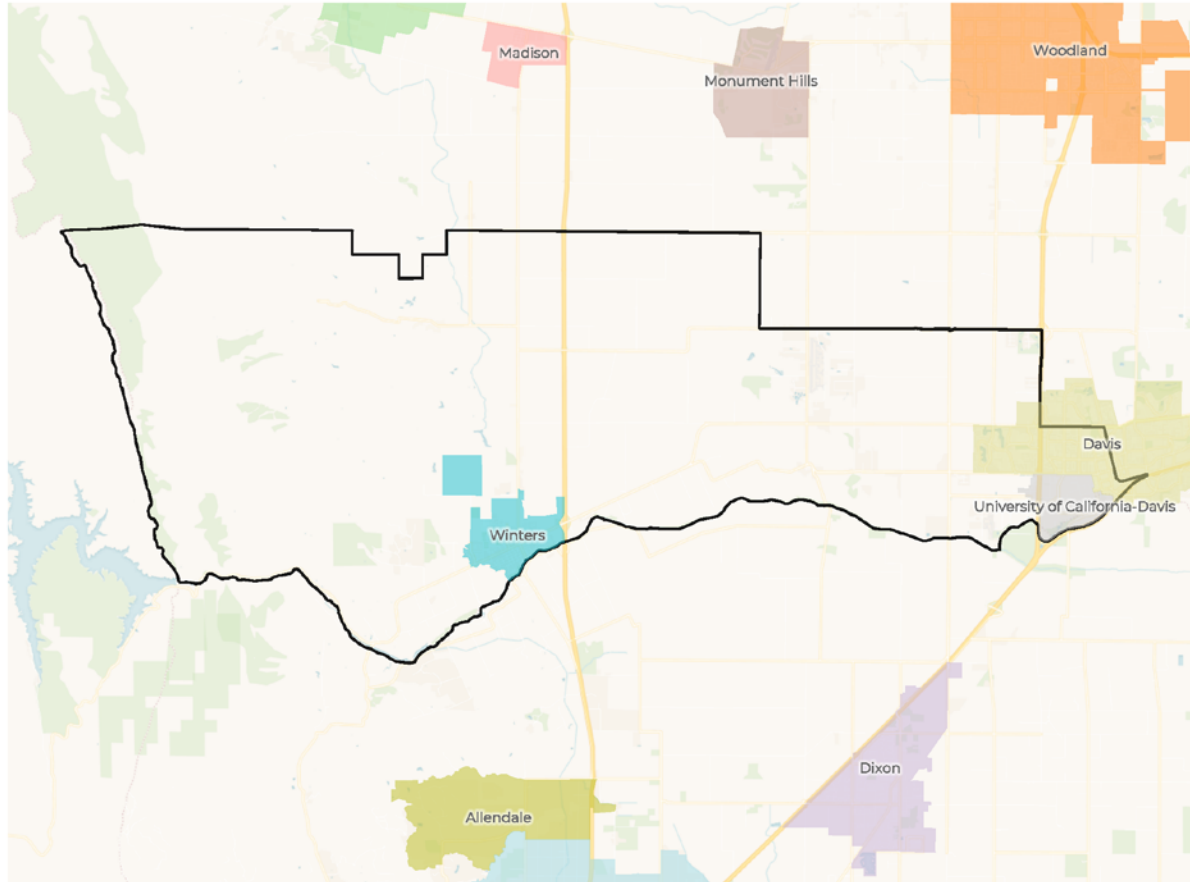


Citizen Voting Age Population

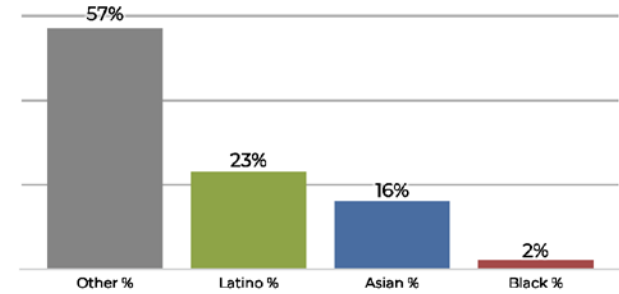


Population	Deviation	Deviation %	Other	Other %	Latino	Latino %	Asian	Asian %	Black	Black %
42,774	-610	-1.4%	22,139	51.8%	12,448	29.1%	6,163	14.4%	2,024	4.7%
Total CVAP	Other CVAP	Other CVAP %	Latino CVAP	Latino CVAP %	Asian CVAP	Asian CVAP %	Black CVAP	Black CVAP %		
26,141	16,702	63.9%	5,231	20.0%	2,846	10.9%	1,360	5.2%		

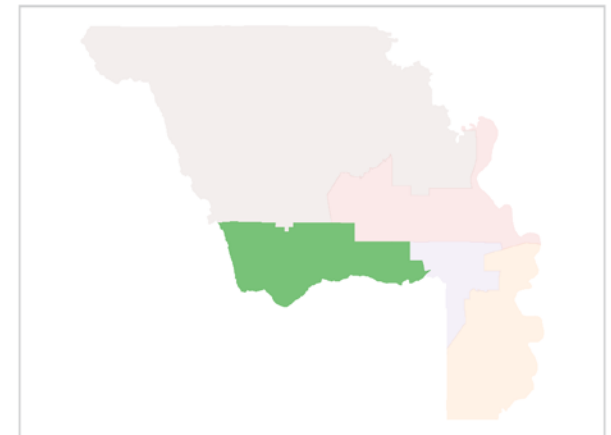
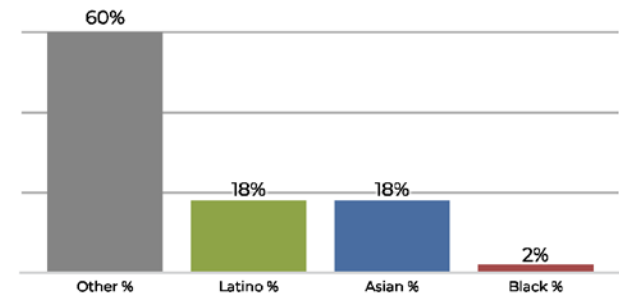
District 2



2020 Census

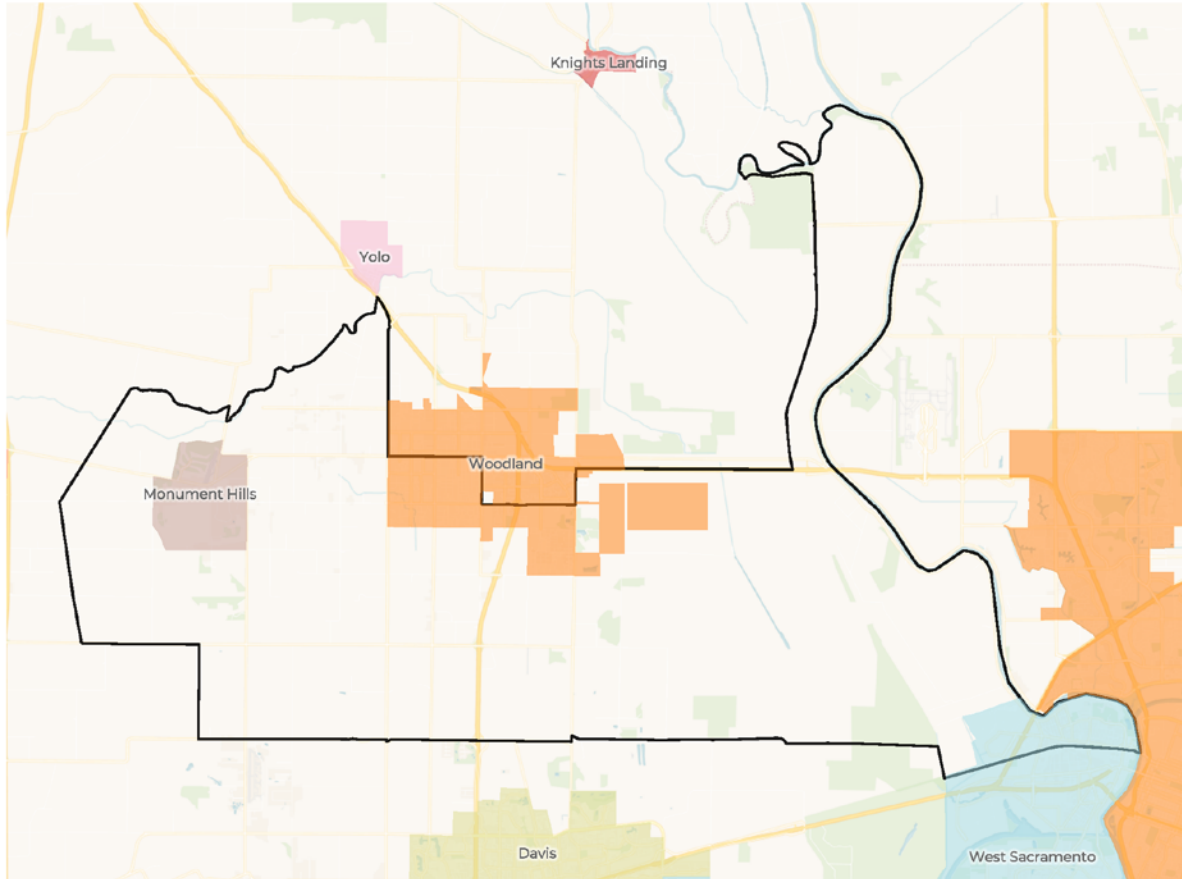


Citizen Voting Age Population

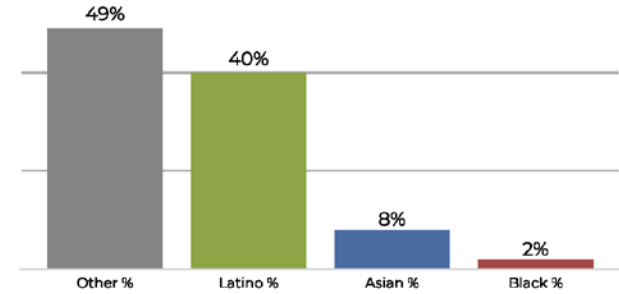


Population	Deviation	Deviation %	Other	Other %	Latino	Latino %	Asian	Asian %	Black	Black %
43,851	467	1.1%	24,981	57.0%	10,424	23.8%	7,404	16.9%	1,042	2.4%
Total CVAP	Other CVAP	Other CVAP %	Latino CVAP	Latino CVAP %	Asian CVAP	Asian CVAP %	Black CVAP	Black CVAP %		
34,813	21,169	60.8%	6,573	18.9%	6,350	18.2%	720	2.1%		

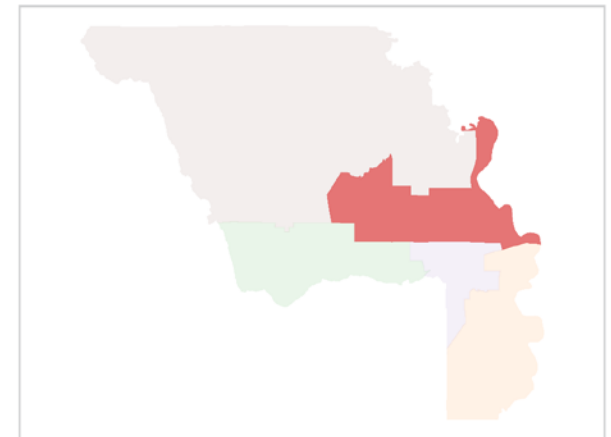
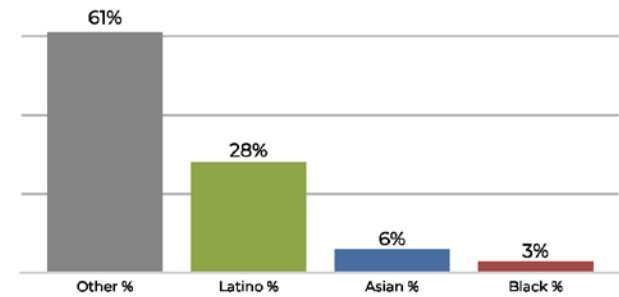
District 3



2020 Census

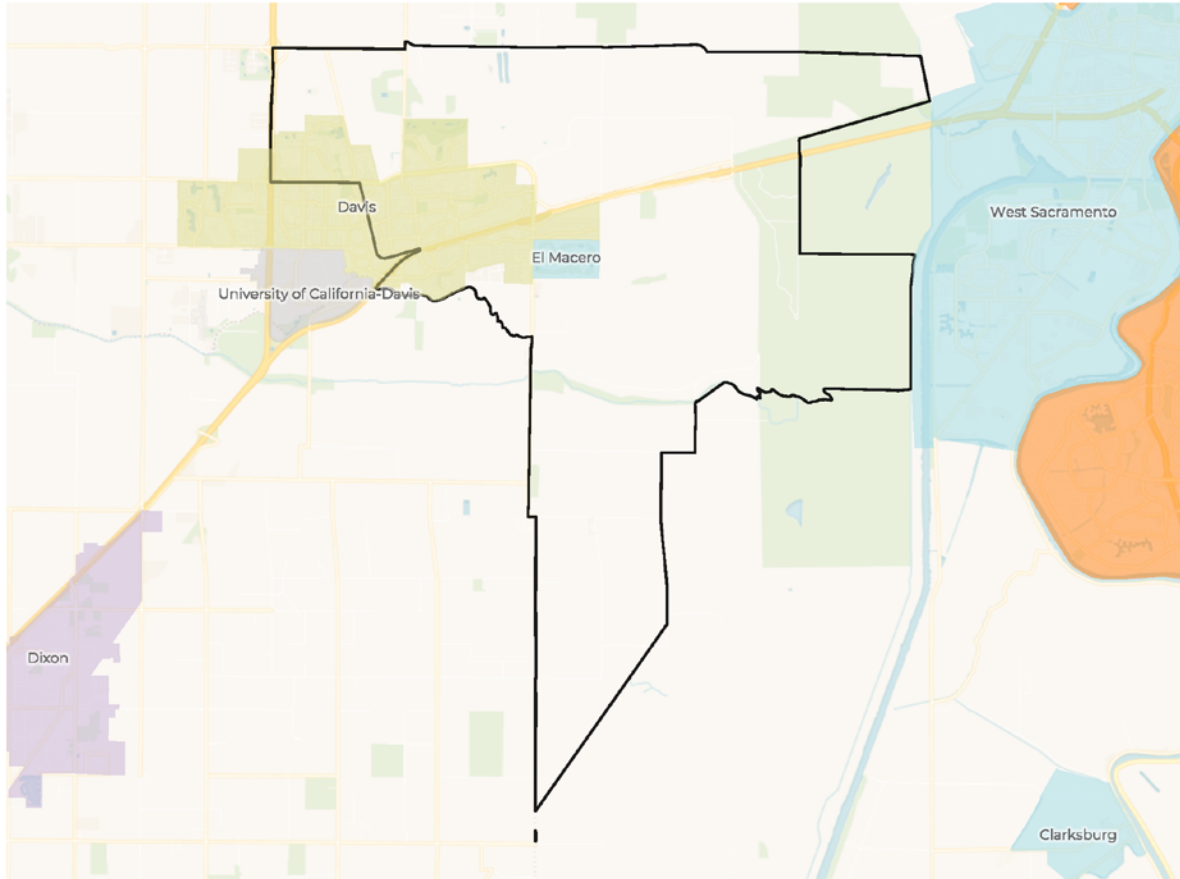


Citizen Voting Age Population

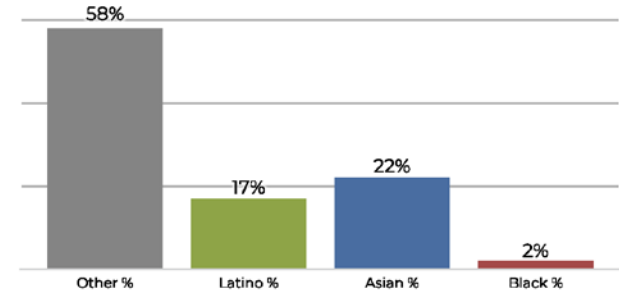


Population	Deviation	Deviation %	Other	Other %	Latino	Latino %	Asian	Asian %	Black	Black %
43,766	382	0.9%	21,759	49.7%	17,531	40.1%	3,527	8.1%	949	2.2%
Total CVAP	Other CVAP	Other CVAP %	Latino CVAP	Latino CVAP %	Asian CVAP	Asian CVAP %	Black CVAP	Black CVAP %		
27,389	16,876	61.6%	7,884	28.8%	1,655	6.0%	975	3.6%		

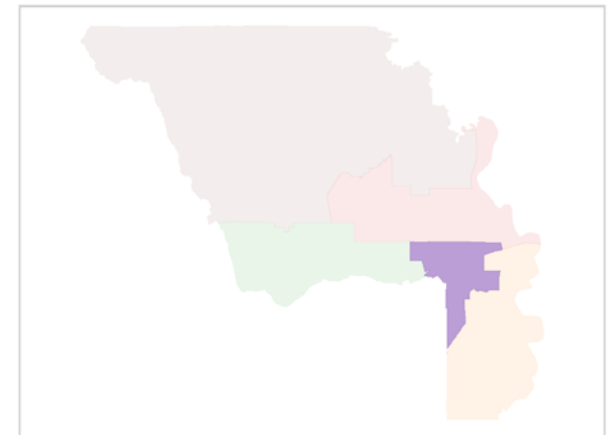
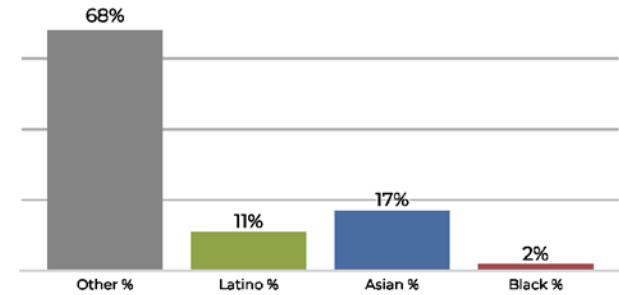
District 4



2020 Census

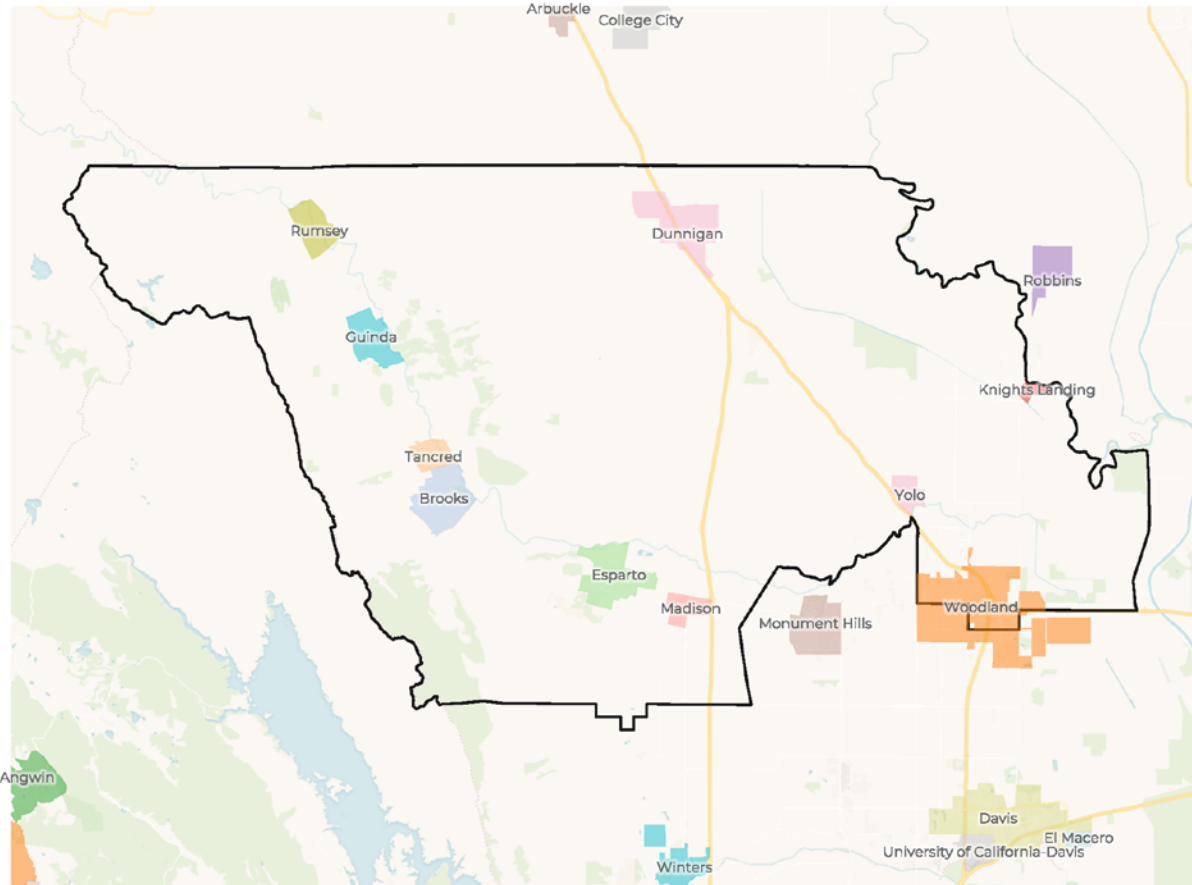


Citizen Voting Age Population

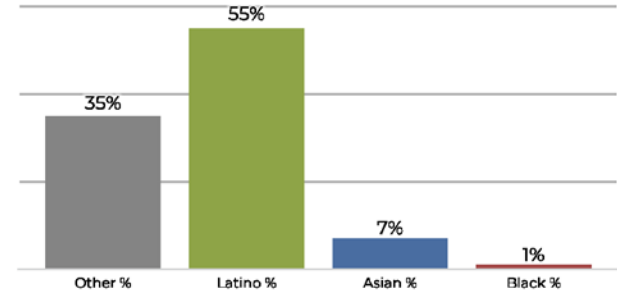


Population	Deviation	Deviation %	Other	Other %	Latino	Latino %	Asian	Asian %	Black	Black %
43,022	-362	-0.8%	24,945	58.0%	7,388	17.2%	9,733	22.6%	956	2.2%
Total CVAP	Other CVAP	Other CVAP %	Latino CVAP	Latino CVAP %	Asian CVAP	Asian CVAP %	Black CVAP	Black CVAP %		
29,600	20,125	68.0%	3,513	11.9%	5,284	17.8%	679	2.3%		

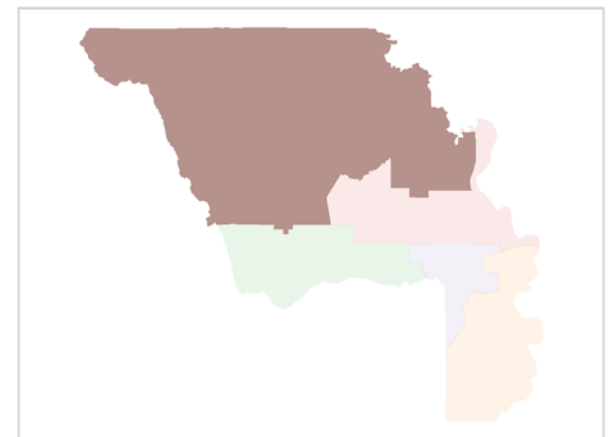
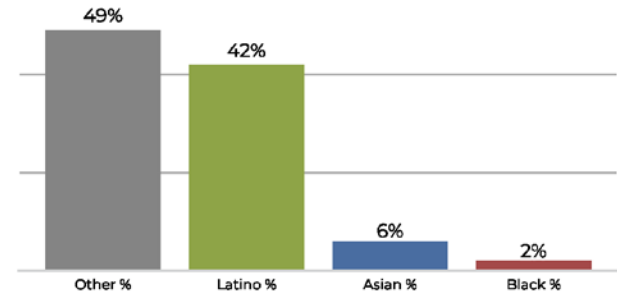
District 5



2020 Census



Citizen Voting Age Population



Population	Deviation	Deviation %	Other	Other %	Latino	Latino %	Asian	Asian %	Black	Black %
43,509	125	0.3%	15,472	35.6%	24,157	55.5%	3,054	7.0%	826	1.9%
Total CVAP	Other CVAP	Other CVAP %	Latino CVAP	Latino CVAP %	Asian CVAP	Asian CVAP %	Black CVAP	Black CVAP %		
26,587	13,127	49.4%	11,168	42.0%	1,759	6.6%	533	2.0%		