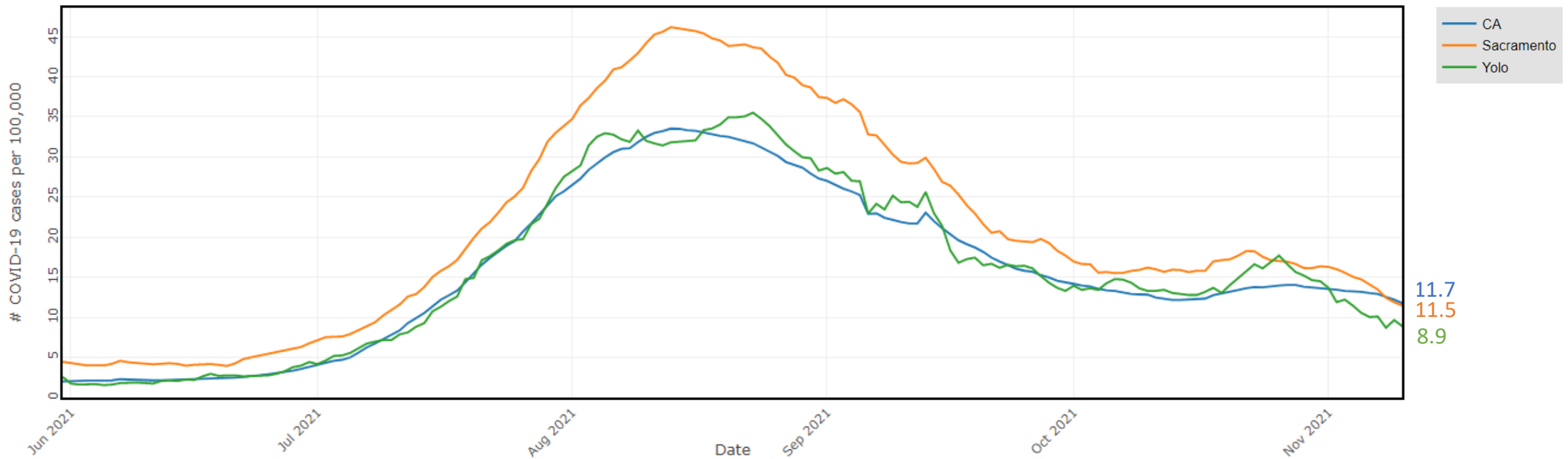


Overview

- COVID by the numbers
- Vaccine eligibility and coverage
- Case investigation and contact tracing changes
- Holiday guidance

Yolo's COVID-19 case rate is stable.



Data are lagged by 9 days

Source: CalREDIE

Yolo now has Substantial community transmission.

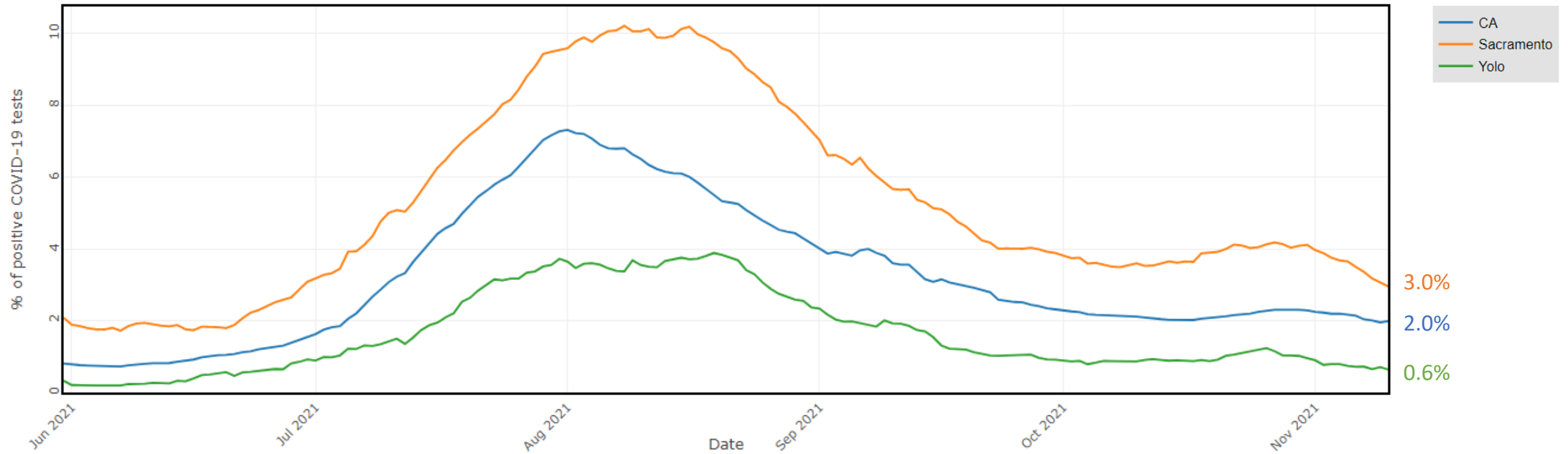
Yolo
8.9/100k/day
62/100k/week



Table 1. CDC Indicators and Thresholds for Community Transmission of COVID-19¹

Indicator	Low Transmission Blue	Moderate Transmission Yellow	Substantial Transmission Orange	High Transmission Red
Total new cases per 100,000 persons in the past 7 days ²	0-9	10-49	50-99	≥100

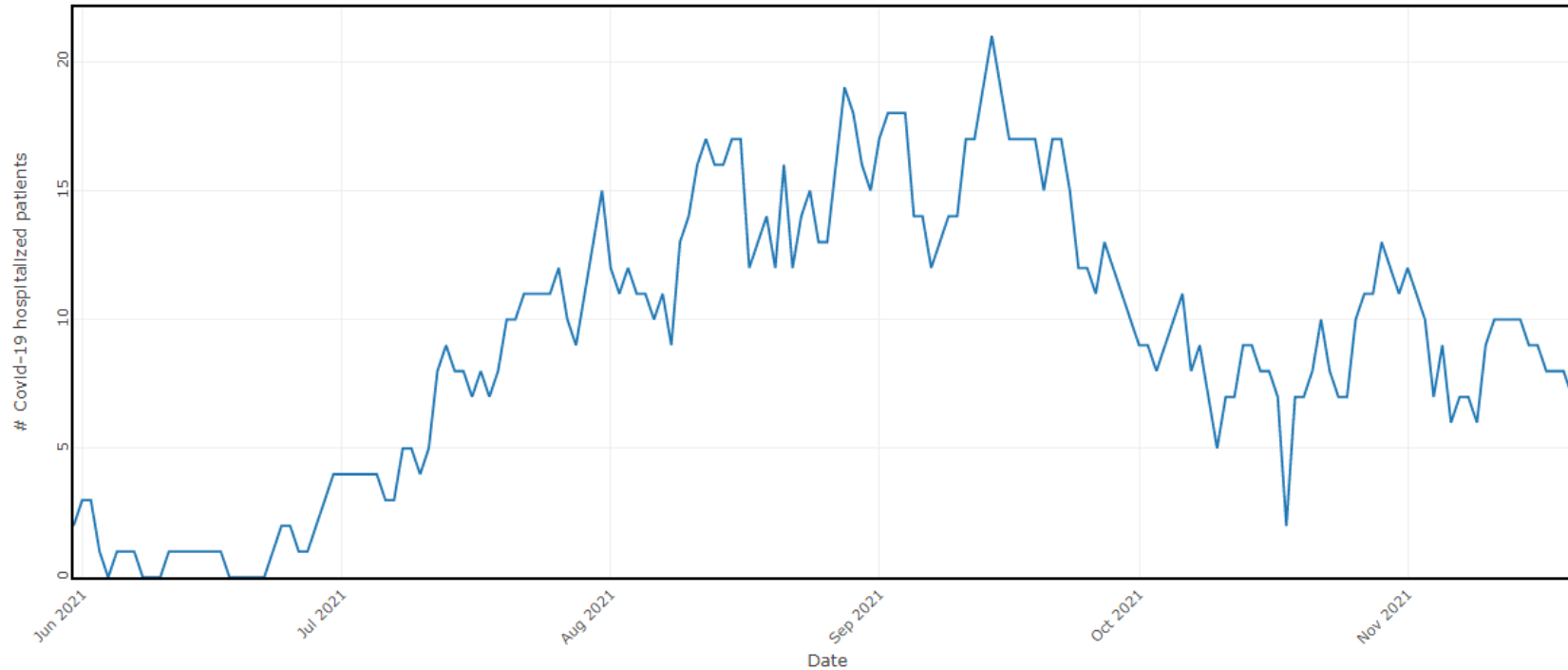
Yolo's COVID-19 testing positivity is low and stable.



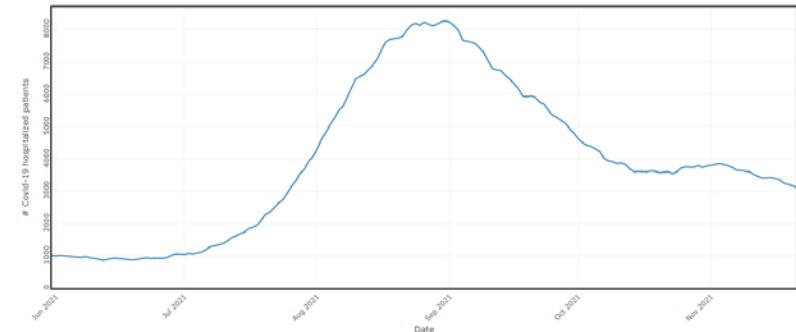
Data are lagged by 9 days

Source: CalREDIE

COVID-19 hospitalizations are relatively stable.



Date	COVID-19+ Patients in Hospital
11/22	8 (4 ICU)*
10/25	7 (4 ICU)



California Hospitalizations

*On 11/22, 8/8 (100%) hospitalized COVID-19 patients were unvaccinated
Source: California Hospital Association and Yolo County MHOAC

Yolo County vaccination rate near state average.

Location	Age Group	% Fully Vaccinated
Yolo County	All Ages	61.8%
California	All Ages	62.8%
Yolo County	12+	71.3%
California	12+	73.6%

Older adults need booster dose.

- **Booster eligibility expanded: You can get a booster if**
 - You are 18+
 - It has been at least 6 months since 2nd dose of Pfizer or at least 2 months since dose of J&J
- **For older adults, waning immunity makes booster dose critical**
 - Only ~40% of eligible Yolo adults 65+ have received a booster to date
 - Vaccine to order program available for adults 65+
- **Boosters available at County-run clinics, health care providers, and pharmacies**
 - You do not need to return to same location as your initial vaccine(s)

Children ages 5-11 can now get vaccinated.

- Pfizer vaccine is now authorized by FDA and recommended by CDC for children ages 5-11
- As of November 21, 22% of Yolo children ages 5-11 have received their 1st dose of COVID-19 vaccine (4,457/20,031)
- County-run vaccine clinics for children will continue after Thanksgiving (1st & 2nd dose)

Prioritization key for limited CI/CT resources.

- Public health staff for case investigation and contact tracing limited
- Focus where biggest impact on transmission: schools and childcare settings, long-term care facilities, and congregate settings (e.g., jails, shelters)
- In SLC settings, cases and contacts receive full investigation
 - Expect a phone call
- In non-SLC settings, cases and contacts receive virtual agent follow up
 - Expect a text message from 233-93

Test before and after holiday gatherings.

- If everybody fully vaccinated (and boosted), you can enjoy a normal holiday gathering
- If anyone is unvaccinated or at high risk of severe disease, everyone should take precautions:
 - Test 1-3 days before (PCR) or day of (antigen)
 - Outdoors or indoors with improved ventilation (open window or HEPA filter)
 - Wear mask with good fit and filtration
 - Test 5 days after
- Stay home if you are sick