

# Yolo Day Reporting Center Program Overview (2017-2021)

Yolo County Community Corrections Partnership

Kevin O'Connell

Data Driven Recovery Project

February 14, 2022

# Yolo County Day Reporting (DRC) Center Overview

The program provides comprehensive services to people on probation, parole, or released from the Yolo County jail.

The program goal is to reduce recidivism by offering effective community integration and reduce re-offending behavior.

The Yolo County DRC follows a “Community Resource Center” model and works by addressing criminogenic needs through:

- DRC-run programming
- Referring to other programs partners

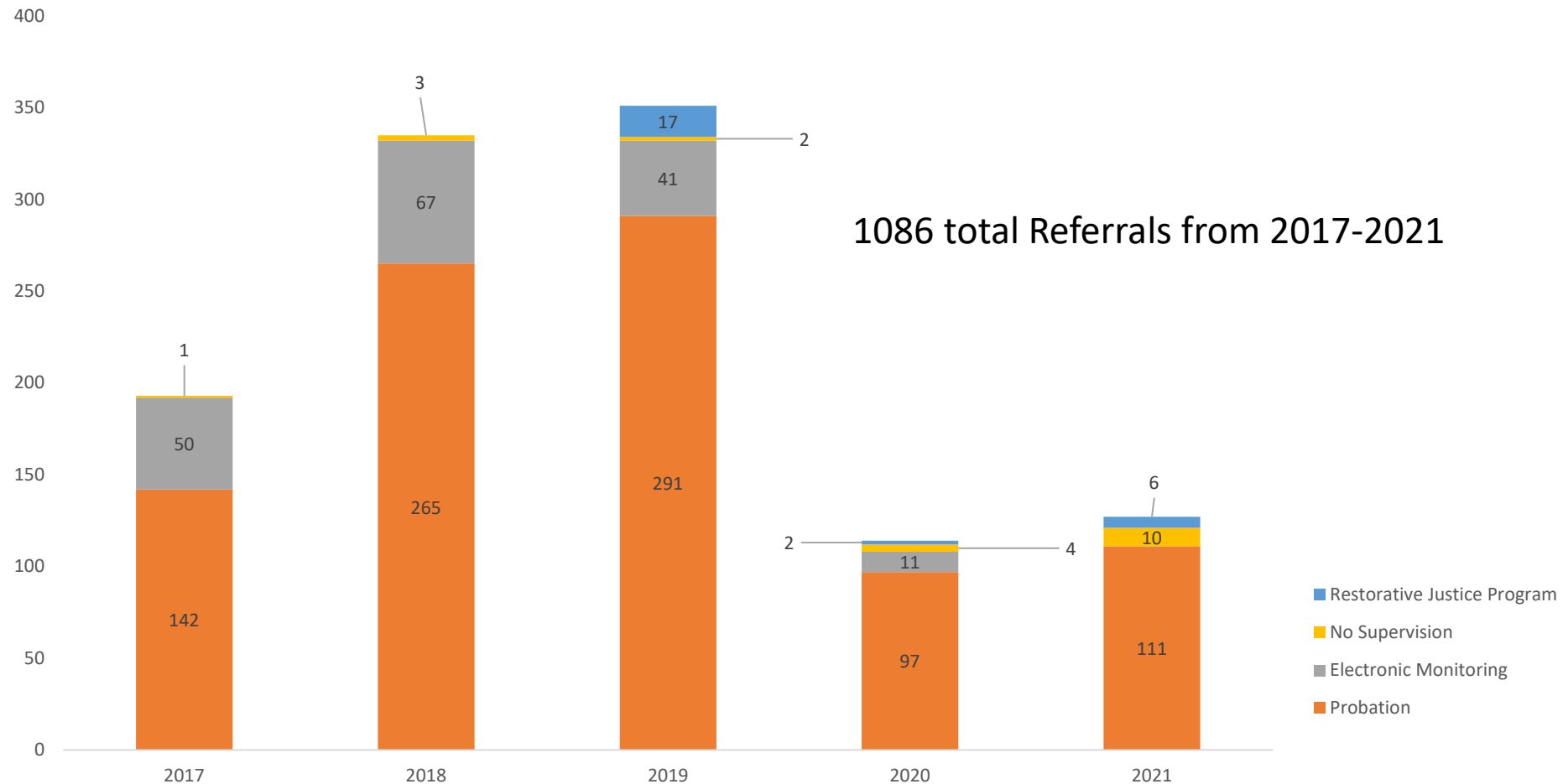
# How are clients referred and determined eligible for the DRC?

Probationers	Electronic Monitoring (EM) /Sherriff	Restorative Justice Partnership	Straight Release/no Supervision	Yolo County Resident-State Parole*
<ul style="list-style-type: none"><li>• Moderate or High Risk/PRCS/Mandatory Supervision</li><li>• Probation determines eligibility for DRC</li></ul>	<ul style="list-style-type: none"><li>• EM team assesses for eligibility</li></ul>	<ul style="list-style-type: none"><li>• DA or defense attorneys identify individuals</li><li>• DA determines suitability based on detailed criteria</li><li>• Agreement of the victim.</li></ul>	<ul style="list-style-type: none"><li>• Client is serving County Prison, Straight Custody Time sentence</li><li>• Probation Refers to DRC after court request</li></ul>	<ul style="list-style-type: none"><li>• Referred by Parole officer</li></ul>

\*This presentation does not include Parole due to data limitations.

# Majority of Referrals Come from Probation, and fell in 2020 as a result of COVID

Admissions to the Day Reporting Center, by Referral Source



# Who was referred to the Day Reporting Center?

- Gender
  - 80% Men
  - 20% Women
- Race
  - 40% White,
  - 30% Hispanic,
  - 10% Black,
- 10% have a Serious Mental Health Need
- 15% Homeless
- Average age of 36

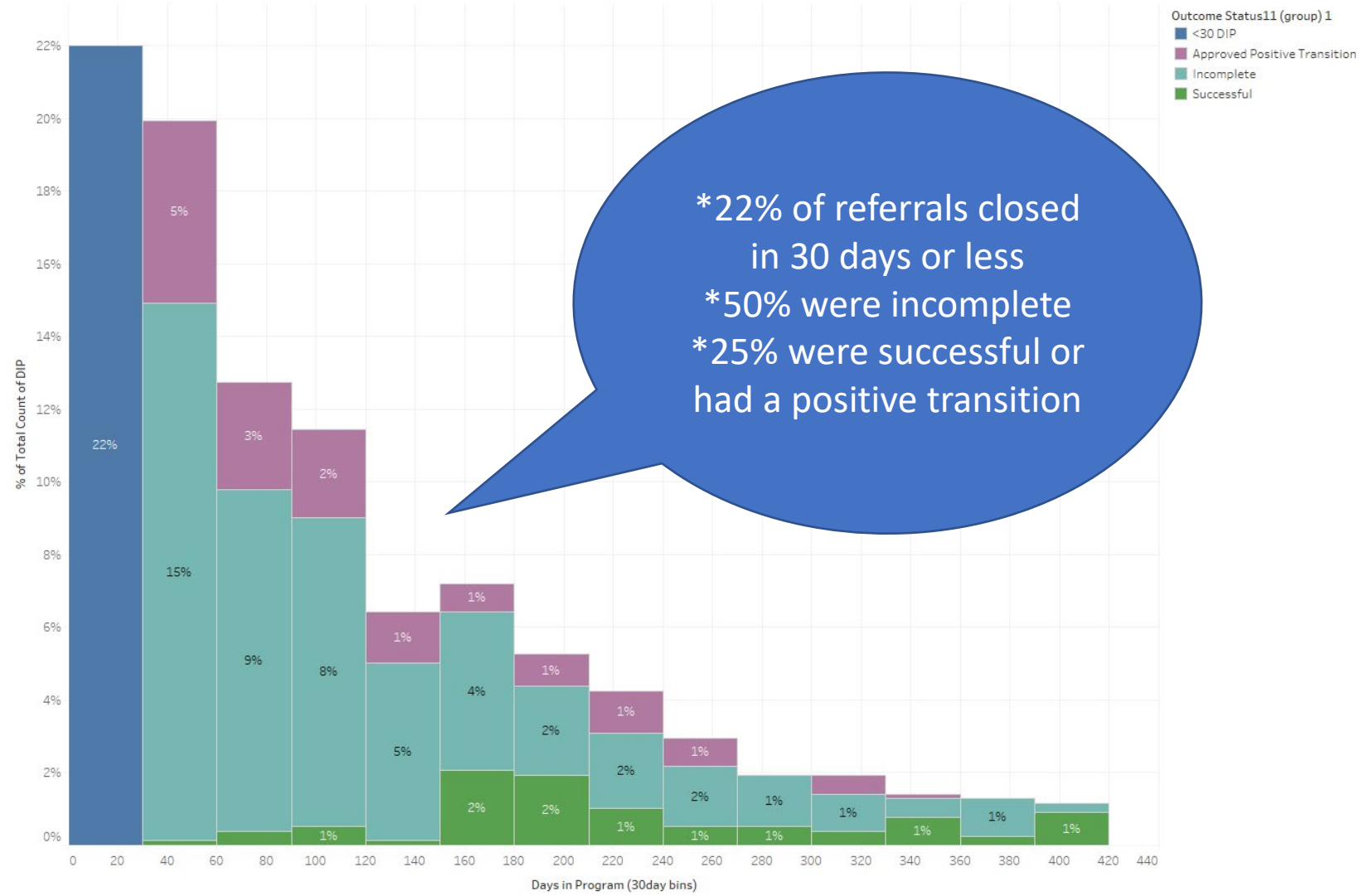
Top needs as identified  
through assessment

## Criminogenic Needs- ORAS

Need	
Education/Employment	79%
Peers Associations	60%
Substance Use	58%
Family	41%
Anti-Social Behavior	33%

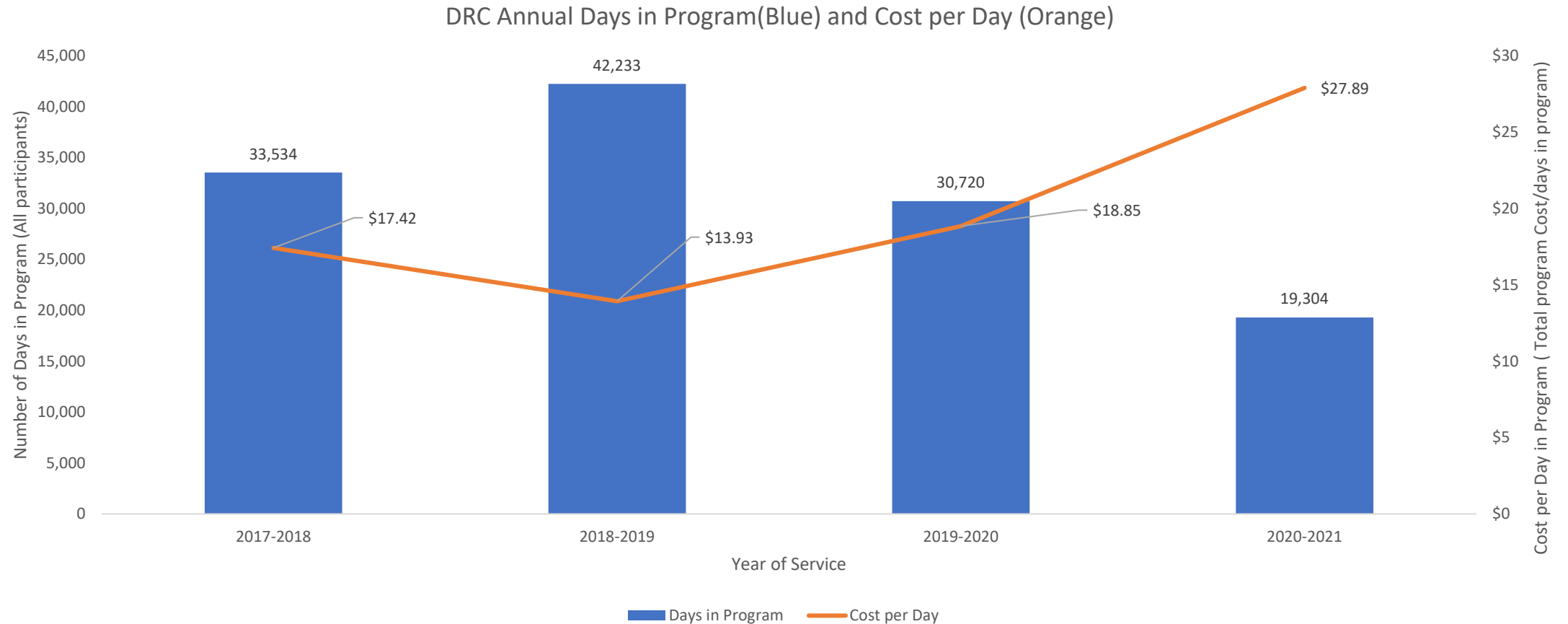
How long did people spend in the program (2017-2021)?

Time In Program, by Exit Type



Median Days in program: 111 Days including stays under 30 days

# Program Cost per Participant Day has gone up due to decline in days in service (and admissions)



# Considerations for using Recidivism

## The Good:

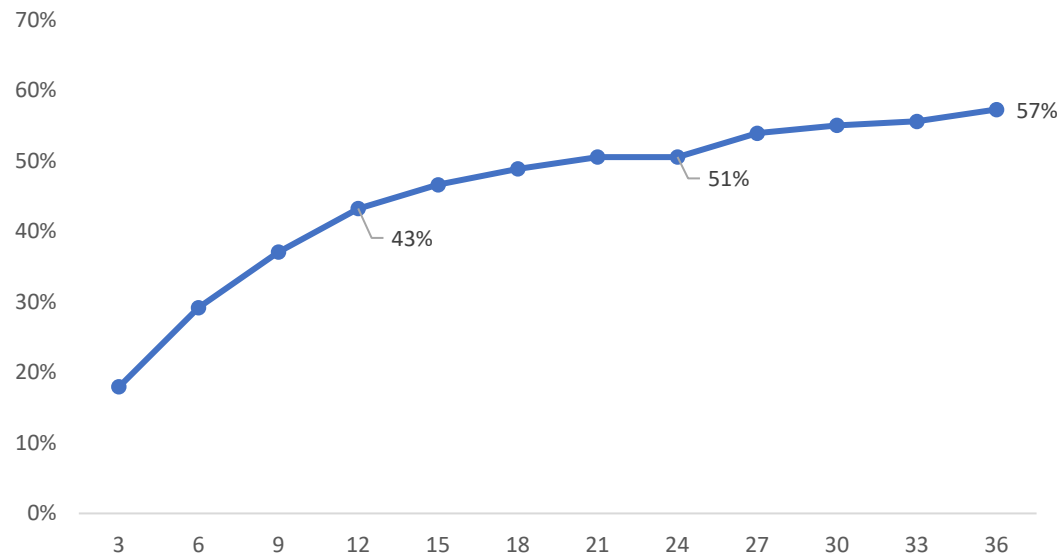
- Correctional interventions are supposed to reduce reoffending, so recidivism is a natural metric for success
- It can be measured at various points of justice contact to tell different stories about a program
- Can be grouped by “Cohorts” of participants for more comparability over time

## The Bad:

- Doesn't allow for policy-relevant comparisons across groups by itself
- Lacks context by itself for what “good” levels represent
- Different groups recidivate at different rates, so there needs to be a comparison group

# 57% of referrals are rebooked into jail at least once within 3 years

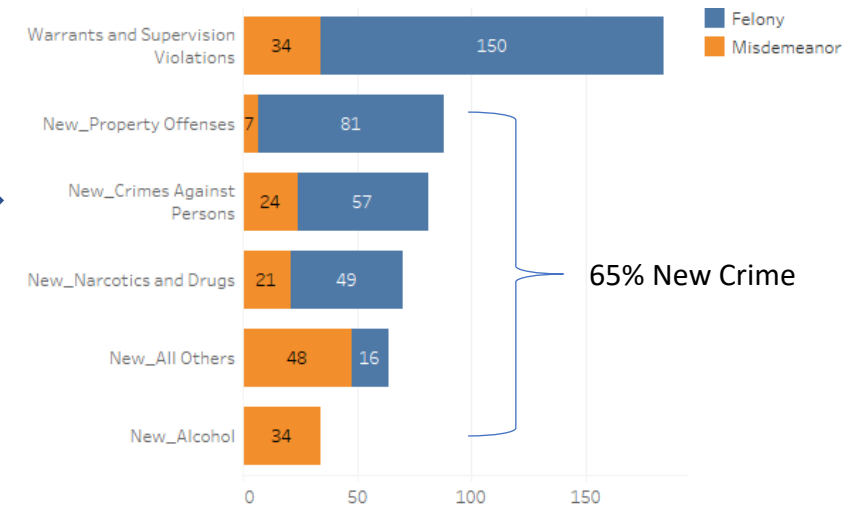
Jail Rebooking Rate ( 2017 DRC Referral Cohort), within a 3 year follow-up



2017 Program Cohort: 178 unique people

But what did they return for?

Jail Rebookings, by type



2017 Program Cohort: Averaged 4 returns to jail per recidivist

\*Forming a comparison group for various client types would improve utility of jail rebooking data

\*Multivariate analysis can help get more specific about how the program works and for whom

# What did jail recurrence look like for subgroups over 3 years for the 2017 cohort?

Clients deemed "Successful" returned to jail 33% of the time over 3 years

Clients deemed "Incomplete" returned to jail 68% of the time

Women returned to jail less often than men

More days in the program were correlated with lower jail rebookings

People with an Serious Mental Health Need and/or homelessness returned more often

# Next Steps

Develop a comparison group for different referring agencies and sub-populations



Create a profile of clients served by DRC programming dosage to inform future program development



Develop recommendations around program improvement opportunities

# Yolo County Day Reporting Center Overview/ Logic Model

Target Population	Inputs/Resources
<ul style="list-style-type: none"> <li>• Probation--Moderate or High Risk Supervision</li> <li>• Electronic Monitoring/Sherriff</li> <li>• Restorative Justice Partnership</li> <li>• Straight Release/No Supervision</li> </ul>	<p>---- County----</p> <ul style="list-style-type: none"> <li>• Probation: Referrals and case management</li> <li>• Sherriff: EM Monitoring</li> <li>• CCP Funds</li> <li>• Other resources and services for DRC to refer to</li> </ul> <p>---Provider (DRC)---</p> <ol style="list-style-type: none"> <li>1. Provides facility and physical space</li> <li>2. Provides onsite services</li> <li>3. Provides case management and referrals</li> <li>4. Provides specialized services and curriculum</li> </ol>

DRAFT

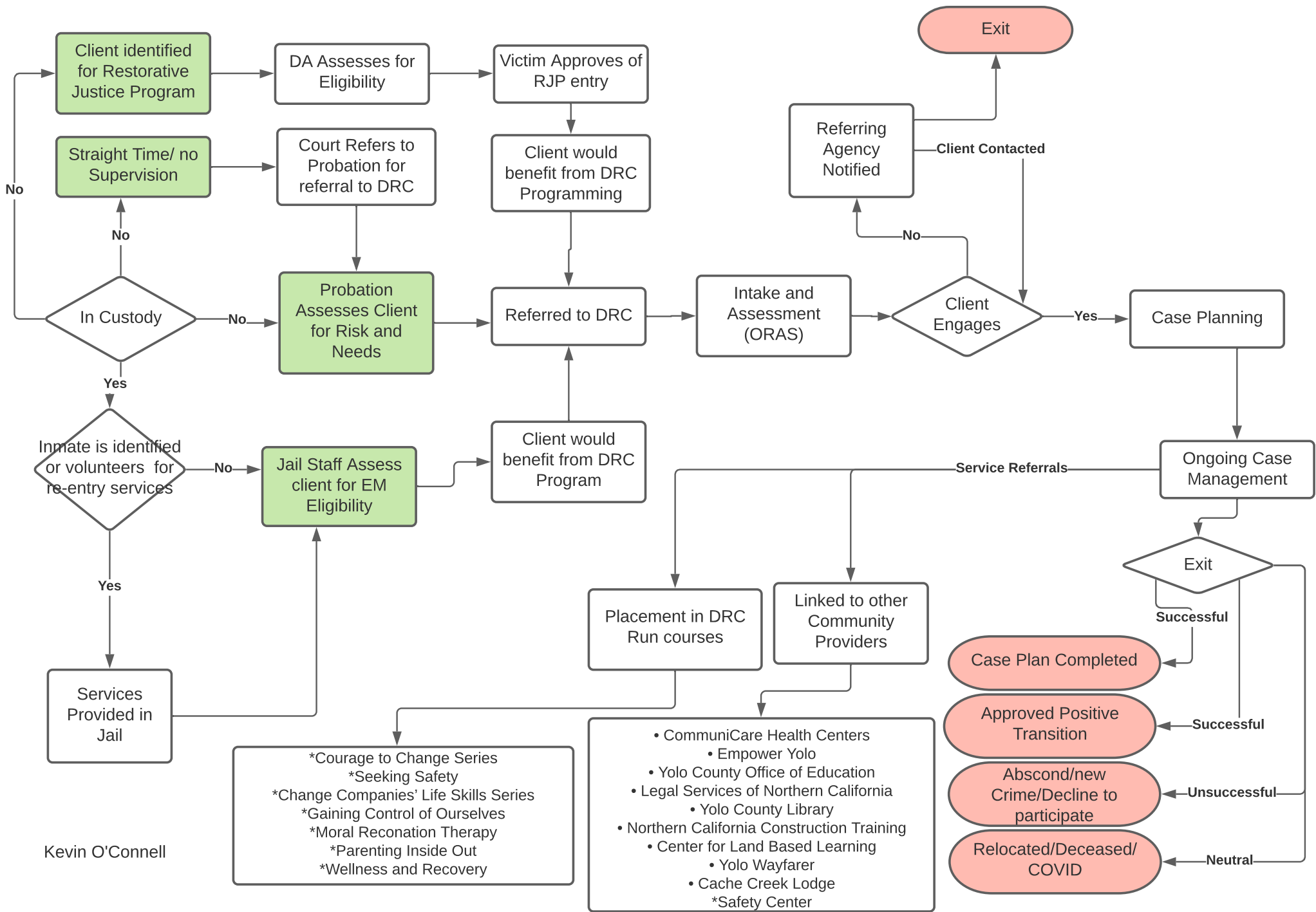
Activities (How much was done)	Outputs (how well was it done?)
<p><i># of people referred to the DRC, by source</i></p> <p><i># of people admitted to the DRC</i></p> <p><i># of people staying more than 30 days after admission at the DRC</i></p> <p><i># of people referred to DRC services</i></p> <ul style="list-style-type: none"> <li>• Cognitive Behavioral</li> <li>• Employment</li> <li>• Parenting</li> <li>• GED</li> <li>• SUD</li> </ul> <p><i># of dosage hours in programs</i></p> <ul style="list-style-type: none"> <li>• Cognitive Behavioral</li> <li>• Employment</li> <li>• Parenting</li> <li>• GED</li> <li>• SUD</li> </ul> <p><i># of referrals to partner programs</i></p>	<p><i># of referral dispositions, by exit reason</i></p> <ul style="list-style-type: none"> <li>• Participated for more than 30 days</li> <li>• Declined services or ended in less than 30 days</li> </ul> <p><i># of people ending the program by type</i></p> <ul style="list-style-type: none"> <li>• Graduating</li> <li>• Neutral (transferring out of county, death, early termination of probation)</li> <li>• Negative (AWOL or new crime)</li> </ul> <p><i># of total client contact dosage, by referral type</i></p>

DRAFT

Outcomes (Are people better off)
<p>-- SAFETY --</p> <p>Avoid Arrests</p> <p>Avoid New jail bookings</p> <p>Avoid New Filed Charges</p> <p>Avoid New conviction</p> <p>-- HEALTH AND WELLNESS --</p> <p>Reduction in criminogenic needs</p> <p>Increased days in treatment</p> <p>Educational Attainment</p> <p>Maintain Employment</p>

DRAFT

# Yolo County Day Reporting Center Process Overview (DRAFT)



Kevin O'Connell