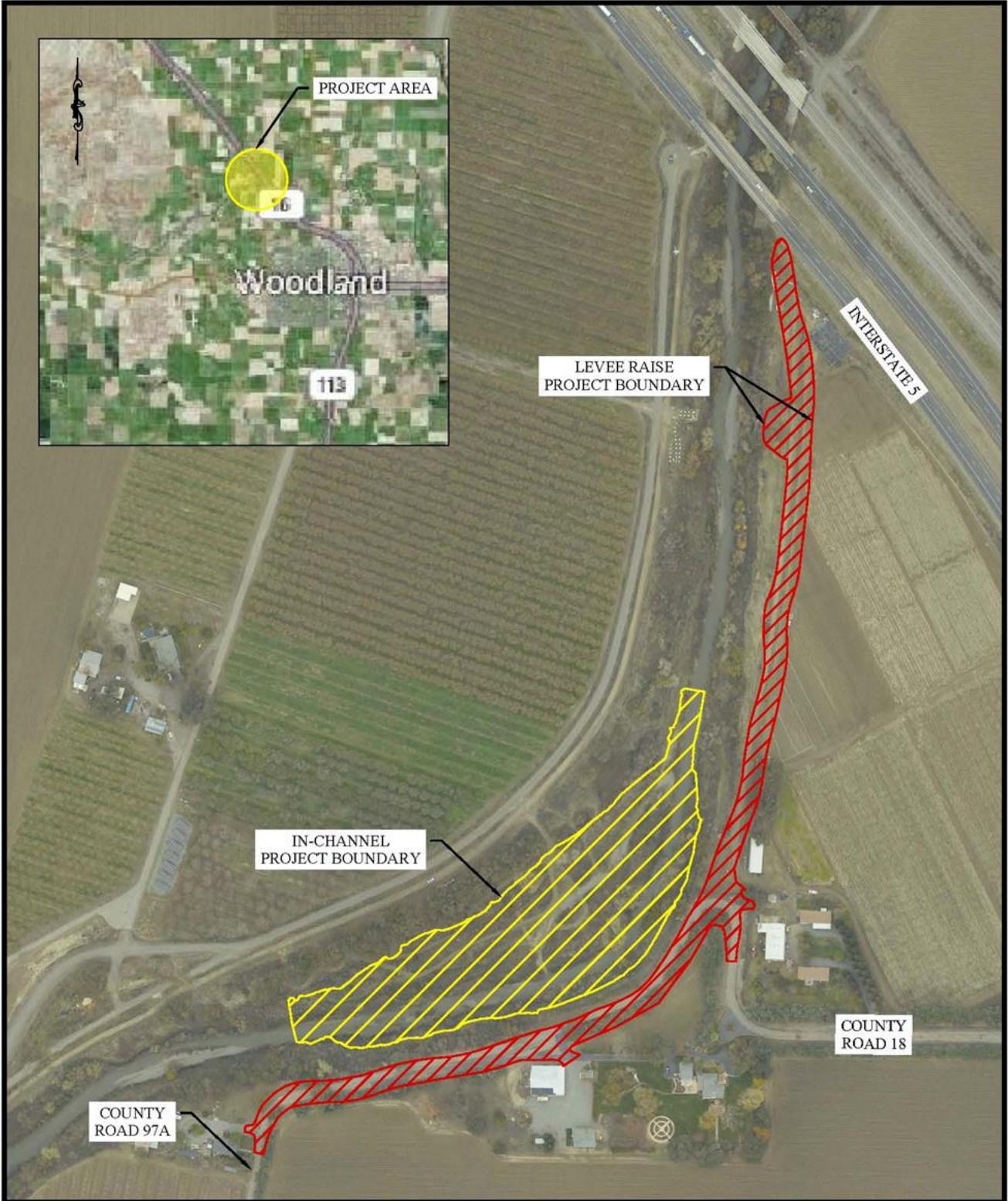


ATTACHMENT A

PROJECT OVERVIEW FIGURE



MBK
ENGINEERS
 455 University Avenue, Suite 100
 Sacramento, California 95825
 Phone: (916) 456-4400 • Fax: (916) 456-0253

**HUFF'S CORNER LEVEE RAISE &
 CHANNEL RECONFIGURATION PROJECT**

**FIGURE 2-1 - PLAN VIEW
 OVERALL PROJECT**

SCALE:	1" = 300'
JOB NUMBER:	5327-5.3.1
DRAWN BY:	MC
DATE:	4/26/2021
SHEET:	N/A