



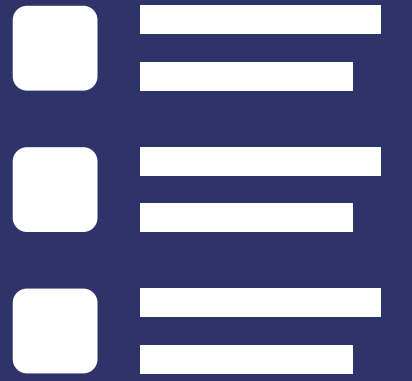
YOLO COUNTY
HEALTH AND HUMAN SERVICES AGENCY

Ca 1AIM



BACKGROUND

- **California Advancing and Innovating Medi-Cal (CalAIM)** is a multi-year initiative by the Department of Health Care Services (DHCS) with overarching goal to:
 - Improve the quality of life and health outcomes of individuals on Medi-Cal by implementing broad delivery system, program and payment reform across the Medi-Cal program
- **CalAIM contains multiple initiatives** planned for implementation from 1/2022 to 1/2027





California Advancing and Innovating Medi-Cal (CalAIM)

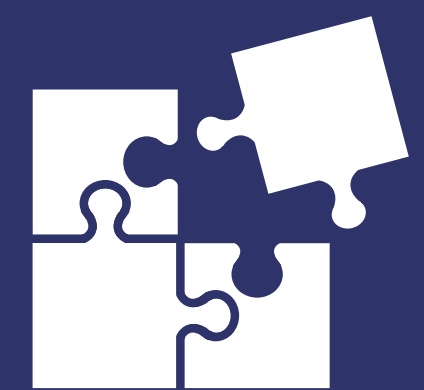
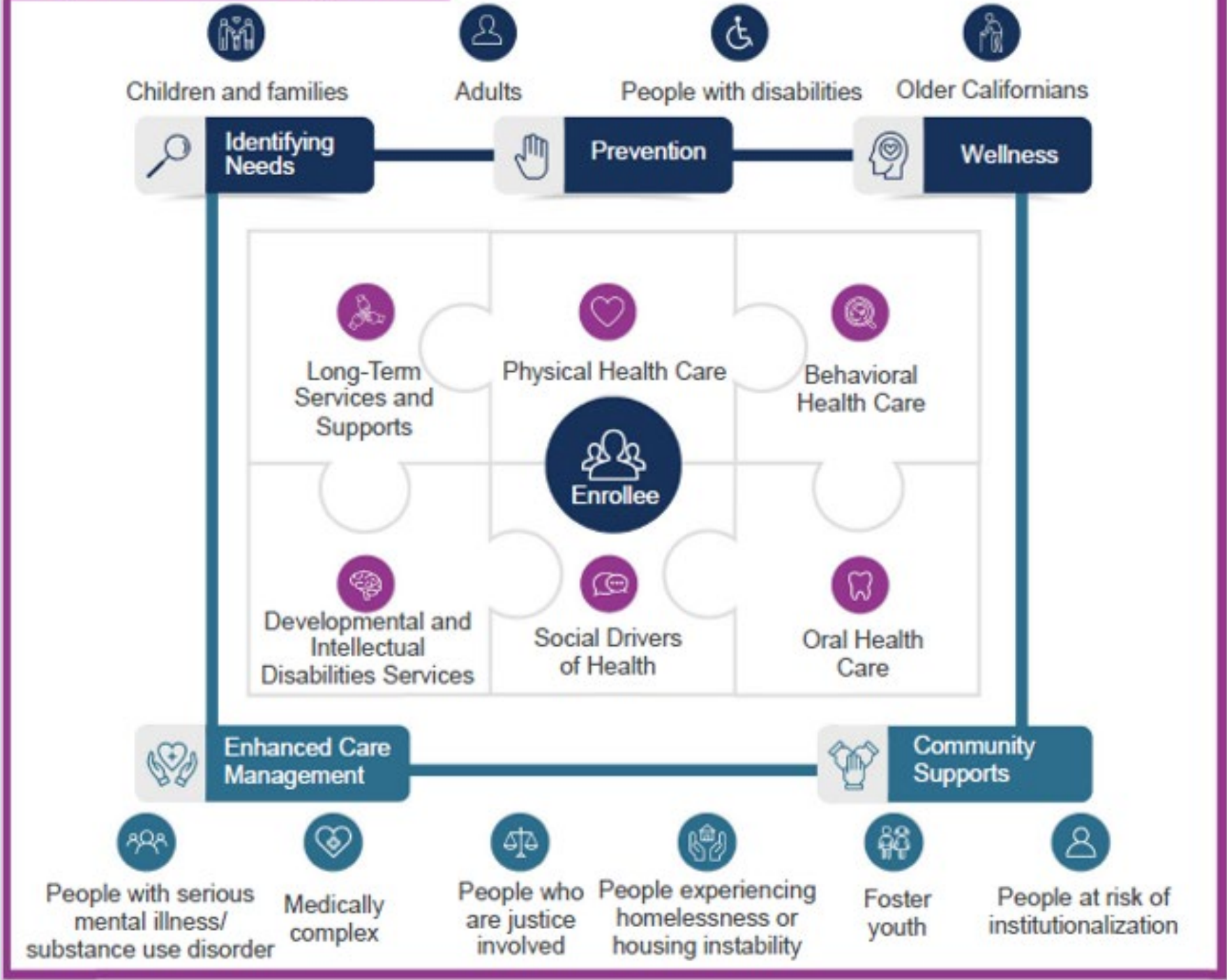
Our Journey to a Healthier California for All

CalAIM is a long-term commitment to transform and strengthen Medi-Cal, making the program more equitable, coordinated, and person-centered to help people maximize their health and life trajectory.

CalAIM Goals

- Implement a whole-person care approach and address social drivers of health.
- Improve quality outcomes, reduce health disparities, and drive delivery system transformation.
- Create a consistent, efficient, and seamless Medi-Cal system.

Population Health Management



CURRENT AREAS OF FOCUS



- Behavioral Health Delivery System transformation:
 - Payment Reform
 - BH Policies Changes
 - Data Exchange
- Implementation of two new Medi-Cal components:
 - **Enhanced Care Management (ECM)** –intensive care management and coordination benefit for members with highest levels of need
 - **Community Supports (CS)** –cost effective services provided in lieu of more expensive MediCal covered services

BEHAVIORAL HEALTH CHANGES

OVERVIEW

- **Payment Reform**
 - New codes for multiple processes
 - Updates to claiming systems
- **Behavioral Health Policy Changes**
 - Medical Necessity
 - Standardized screening and transition tools
 - Revised documentation standards
- **Data Exchange**
 - Improve data exchange capabilities
 - Meet CMS-mandated interoperability rules and data standards
 - Improve quality and coordinate care with MCP and other MediCal providers



BEHAVIORAL HEALTH CHANGES

CALAIM BH QIP

- **DHCS incentive program** for required changes
- Incentive payments based on deliverable due dates:
 - 9/30/22
 - 3/1/23
 - 9/29/23
- **\$888,000** available into FY 23/24



BEHAVIORAL HEALTH SYSTEM CHANGES

PREPARATION

- Contracted with a consultant to **inform and advise** Executive Leadership Team (ELT) about CalAIM
- Convened **internal HHSA workgroup**, resulting in subworkgroups to tackle specific deliverables
- Developed **interagency work plan** to complete required milestones, first due date of 9/30/22



IMPLEMENTATION OF ECM AND CS

OVERVIEW

- Partnership HealthPlan of California (PHC) is Yolo County's MedCal managed care plan provider
- Partnership's responsibilities:
 - Required to implement ECM and CS
 - Contracting with providers to offer these services in Yolo County beginning 7/1/22
 - Enhanced Care Management (ECM)
 - 3 Eligible populations starting 7/1/22
 - Additional eligible populations starting 1/1/23 and 7/1/23
 - Community Supports (CS)
 - 6 Services starting 7/1/22
 - 2 Additional services starting 1/1/23



IMPLEMENTATION OF ECM AND CS

HHS A'S ROLE

- **HHS A's Responsibilities**
 - Not required to participate in ECM and/or CS
- **Engaging and supporting** our community partners
 - Sharing information
 - Encouraging exploration of opportunity to contract with PHC to provide ECM and/or CS
 - Facilitating engagement between PHC and community partners
- **Considering option** to contract with PHC to provide ECM and/or CS
 - Capacity
 - Cost feasibility



IMPLEMENTATION OF ECM AND CS

PREPARATION

- **Contracted with a consultant** to inform and advise Executive Leadership Team (ELT) about CalAIM
- **Identified HHS A programs and services** with a potential nexus
 - Convened meetings with PHC to discuss opportunities for HHS A involvement; additional meetings planned
- **Researched option** to contract as direct service provider for ECM and/ or CS
- **Developed work plan** to:
 - Support partners
 - Finalize HHS A's decision on ECM/ CS role
 - Communicate with stakeholders



ENGAGING AND SUPPORTING OUR COMMUNITY PARTNERS

- **Shared information**
 - Presentations to HHS's Provider Stakeholder Workgroup
 - Additional presentation planned
 - Communication plan and upcoming public facing landing page
- **Encouraged engagement**
 - Encouraged providers to connect with PHC to explore becoming a direct service provider for ECM and CS
- **Facilitated connections**
 - For partner agencies interested in exploring becoming a provider for ECM and/ or CS
 - Convened meeting with consultant and key partner agency
 - Upcoming meetings with PHC and interested partner agencies for targeted areas



QUESTIONS?



COUNTY OF YOLO
HEALTH & HUMAN SERVICES AGENCY
GONZALES BUILDING