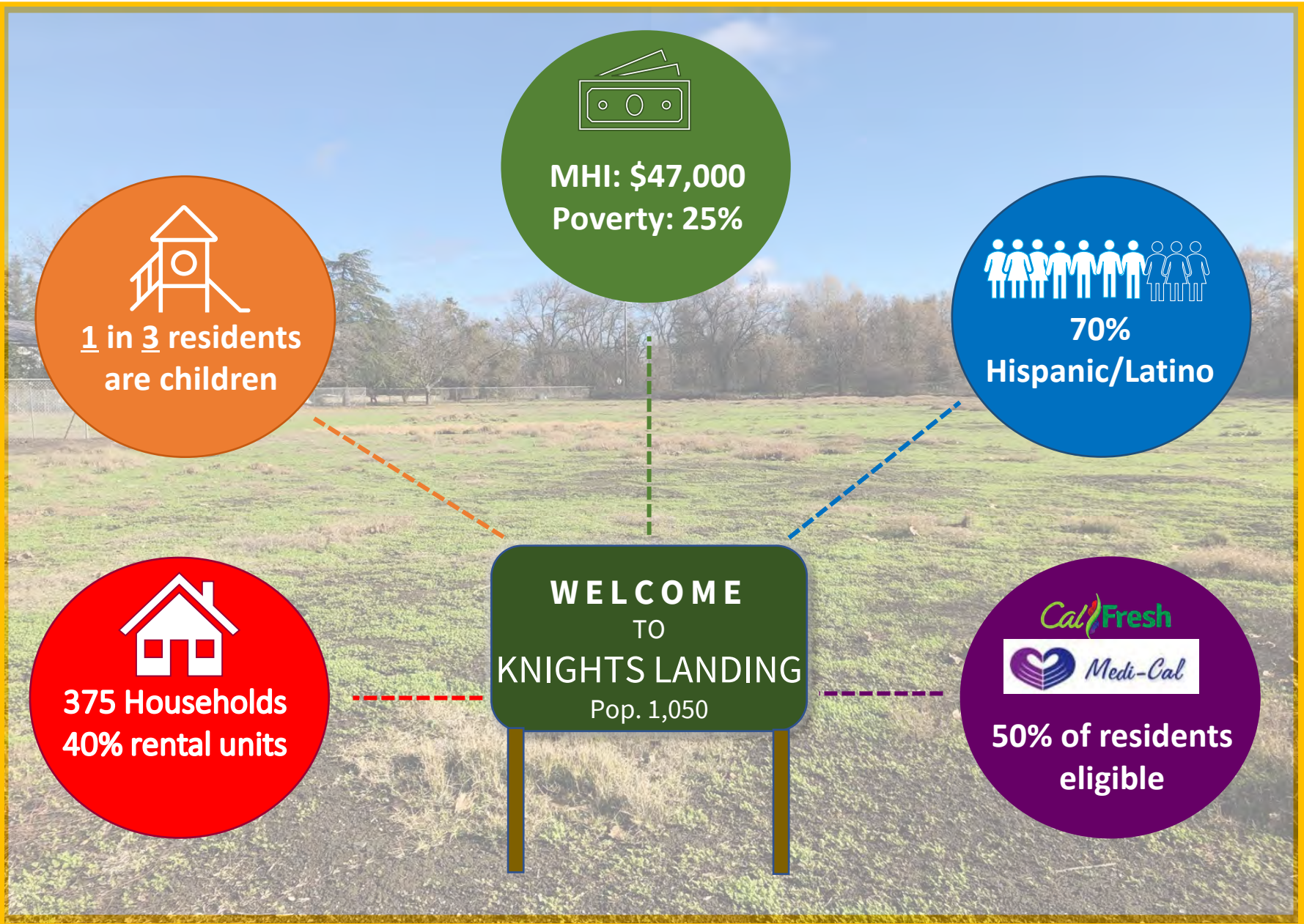




KNIGHTS LANDING COMMUNITY PARK FUNDING PLAN

YOLO COUNTY BOARD OF SUPERVISORS
NOVEMBER 8, 2022



PARK DEVELOPMENT PROCESS

Community-based planning and design

- 10 member “Project Development Team”
- Open House and Town Hall events
- Design-a-park booth at school event
- Multi-lingual surveys and outreach materials
- Ranking of desired amenities
- Multi-generational outreach

Land Use Agreement with WJUSD

Funding Application Competitiveness



PARK SITE: PRESENT AND FUTURE

“While all communities benefit from parks, one community in Yolo County, Knights Landing, stands to benefit tremendously from the addition of a park...Knights Landing has a Healthy Places Index score in the 32nd percentile and park access score in the 2nd percentile statewide. Knights Landing is expected to see improved health equity with the Knights Landing Community Park”

- Dr. Aimee Sisson, MD, MPH



3D Aerial “Fly Through”



BENEFITS OF COMMUNITY PARKS



Community	HDI	Avg. Life Expectancy
Davis	8.91	88 years
Yolo County	5.49	82 years
Knights Landing	4.45	79 years

Health Equity (Strategic Plan: Thriving Residents)

- Access to parks is single biggest factor in health equity
- Human Development Index (“HDI” Scale 0-10)
- Older adults 3.5x more active with park access (NPRA)
- Parks proven to reduce obesity and chronic disease (CDCP)



BENEFITS OF COMMUNITY PARKS

Health Equity (Strategic Plan: Thriving Residents)

- Knights Landing 70% Hispanic/Latino
- CDCP studies:
 - Hispanic/Latino 48% obesity rate
 - 10% higher than general national population
 - Adult obesity rate: 82% males / 79% females
 - Hispanic/Latino youth 50% more likely to be obese (26% rate)

Cultural Benefits

- Proximity (distance to other public spaces)
- Exposure to green spaces increases academic scores
- Stronger sense of community
- Greater community resilience
- Promote community wellness and social cohesion

BENEFITS OF COMMUNITY PARKS

Environmental Benefits

- 150 new trees: mature trees kept
- Dissipate heat and capture GHG
- Drainage improvements reduce vectors

Economic Benefits

- Homebuyers prefer homes near parks (\$32/sf increase)
- Raises quality of life indexes for all properties
- Higher home values / increased property tax assessments
- Organized events increase local commercial revenues



OUTSIDE GRANT FUNDING EFFORTS

Thank you for your interest in the SPP program. The Office of Grants and Local Services (OGALS) has completed its multi-level review process of the SPP “Round Four” applications. Unfortunately, the project application listed above was not selected for funding.

SPP “Round Four” was a highly competitive grant program. **A total of \$2.42 billion was requested through 468 project applications. The amount requested greatly exceeded the \$548.3 million available in this round.** OGALS believes that each application highlights a statewide need for local parks.

Funding Program	Amount	Application Status
2019: Statewide Park Program (Round 3)	\$ 7.8M requested	Denied
2021: Statewide Park Program (Round 4)	\$ 4.8M requested	Denied
2022: Regional Park Program	\$ 3M requested	Denied
2022: Rural Recreation & Tourism	\$ 3M requested	Denied

CCI RECOMMENDED FUNDING PLAN

Estimated Costs

Single Construction Phase (1)	\$	5,800,000
Subtotal		5,800,000

Funding Sources

American Rescue Plan (ARP)		2,820,000
Proposition 68 - Per Capita Funds		260,352
Cannabis Tax Allocation		228,000
State Budget Appropriation (Dodd)		750,000
Subtotal		4,058,352

Remaining Funding Gap: \$ (1,741,648)

Staff Proposal to close gap:

Parks Development Impact Fee (2)		362,429
Capital Improvement Reserve		900,000
Accumulated Capital Outlay Funds		479,219
Subtotal		1,741,648

