

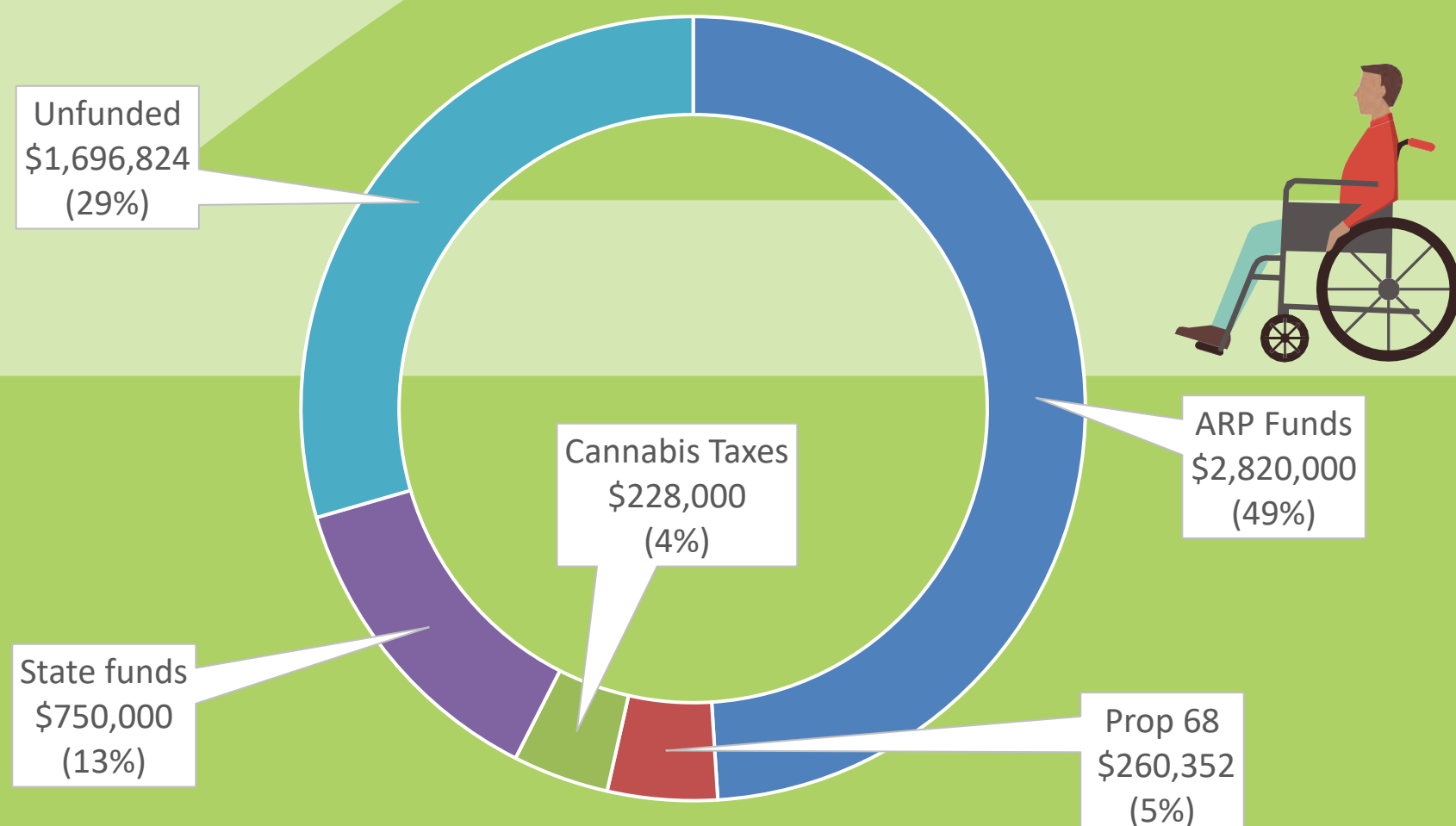
Knights Landing COMMUNITY PARK

"The County has developed a community park master plan and intends to develop a 7.26-acre park in Knights Landing. The park will be located at the northeast corner of Highway 113 and Locust Avenue, adjacent to the Science and Technology Academy, part of the Woodland Joint Unified School District ("WJUSD")."

~Supervisor Angel Barajas, District 5

**Construction of Phase 1
to begin in 2023!**
Includes soccer field,
basketball court, picnic
area, and ball wall

Funding Status
\$4.05M of \$5.8M secured



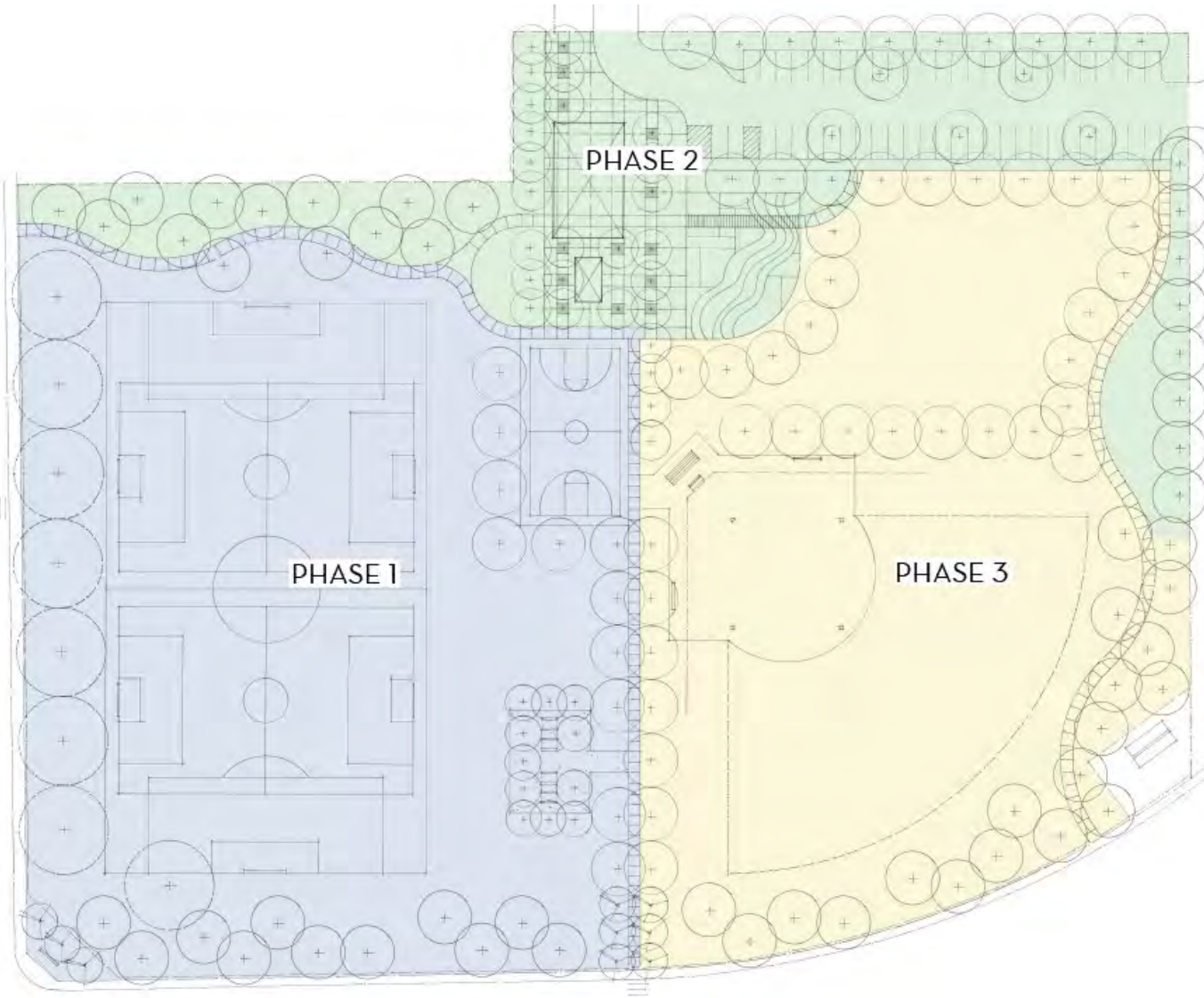
Full park buildout includes
Soccer field, little league /softball
field, full-size basketball court, ball
wall, new plaza and picnic areas,
refurbished restrooms, multi-age
playground, new landscaping and
paved walking loop

Estimated Timeline

Spring 2023	Summer 2023	Fall 2023	Spring 2024	To Be Determined
Pre-construction activities	Groundbreaking/ Begin construction	Phase 1 complete Soccer field seeded	Soccer field opens GRAND OPENING	Phases 2 & 3 Pending add'l funding

Knights Landing Community Park, Phased Construction

Total Construction Cost: \$5.014M



Phase 1 (3 acres): \$1.62M

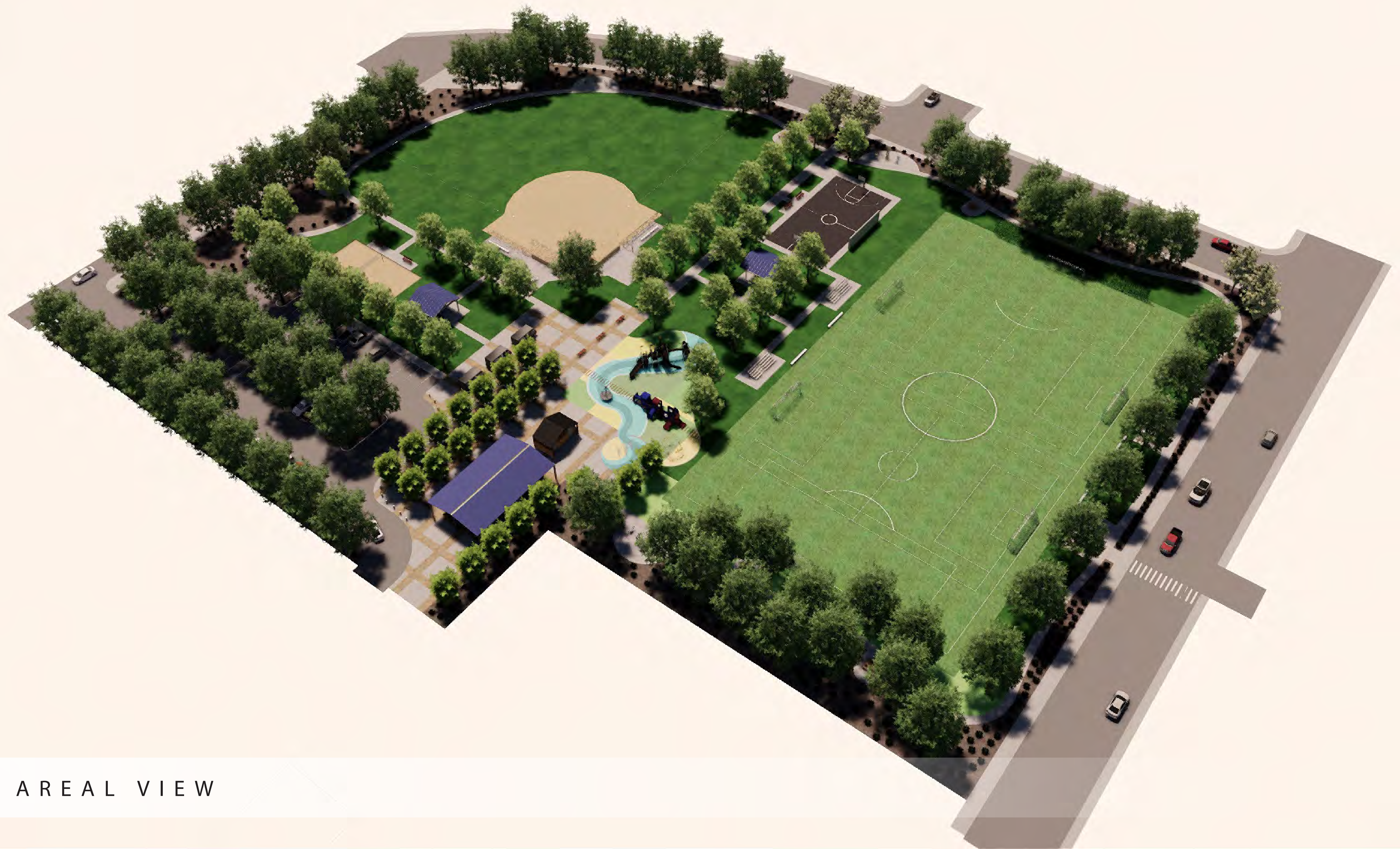
- Soccer Field
- Full size basketball court
- 8' high ball wall
- Landscaping/Picnic area

Phase 2 (1.5 acres): \$2.27M

- Multi-age play structures
- Parking/landscaping enhancements
- Restroom rehabilitation
- Plaza/community space

Phase 3 (2.5 acres): \$1.13M

- Softball/little league field
- Walking/landscaping enhancements



S / E A R E A L V I E W



KNIGHTS LANDING

YOLO COUNTY



KEY PLAN LOCATION



PLAYGROUND



KNIGHTS LANDING
YOLO COUNTY



NORR



KEY PLAN LOCATION



BASKETBALL COURT



KNIGHTS LANDING
YOLO COUNTY



NORR



KEY PLAN LOCATION



OUTER WALKWAY



KNIGHTS LANDING

YOLO COUNTY



KEY PLAN LOCATION