



Yolo Habitat Conservancy

County of Yolo • City of Davis • City of Winters • City of West Sacramento
City of Woodland • University of California, Davis

To: Gary Sandy, Chair
Members of the Board

From: Charlie Tschudin
Natural Resources Planner

Re: Authorize approval for Yolo Habitat Conservancy Executive Director to take necessary actions to execute a Certificate of Inclusion with Pacific Gas and Electric to allow use of Yolo HCP/NCCP coverage for the C-1637 L-400 AC Mitigation Project

Date: July 18, 2022

REQUESTED ACTION:

Authorize approval for Yolo Habitat Conservancy Executive Director to take necessary actions to execute a Certificate of Inclusion with Pacific Gas and Electric to allow use of Yolo HCP/NCCP coverage for the C-1637 L-400 AC Mitigation Project

BACKGROUND:

Pacific Gas and Electric submitted an application to Yolo Habitat Conservancy staff requesting coverage through the Yolo HCP/NCCP as a Special Participating Entity (SPE) in May 2022. The project, referred to as C-1637, involves installation of approximately 5,100 feet of horizontal mitigation wire and five SSD cabinets in the western half of the Dunnigan Hills. The project location is included below in Exhibit 1, Vicinity Map. The C-1637 project wire will be installed between Gas Lines 400 and 401, within PG&E's existing easement, and to minimize orchard crop loss and impacts, roughly 1,275 feet of wire will be installed via horizontal directional drilling (HDD). The remaining wire will be installed via open trench. Each of the five SSD cabinets will require two 4' x 4' bell holes and a 1' by 30' trench connecting them. A bulldozer-mounted plow will be used to install the mitigation wire, placing it near the same depth of the gas lines which ranges from 3 to 6 feet. In areas where a plow is not feasible, a backhoe will be used to excavate the trenches. A backhoe will be used to dig the HDD splice/termination locations and the trenches to the SSD locations. Staging and workspace areas will be located within the orchard at the northern end of the project and along the wire installation.

A breakdown of the project's impacts is included below.

PG&E, C-1637, Project Impacts

Land Cover Types	Perm. Impacts	Fee Buffer	Temp. Impacts	Total Acres
Semiag/Incidental to Agriculture	-	-	0.06-acres	0.06-acres
Grassland (all types)	0.001-acres	0.061-acres	3.9-acres	3.962-acres
Deciduous Fruits/Nuts	0.001-acres	0.061-acres	0.15-acres	0.212-acres
Total acres	0.002-acres	0.122-acres	4.11-acres	4.234-acres

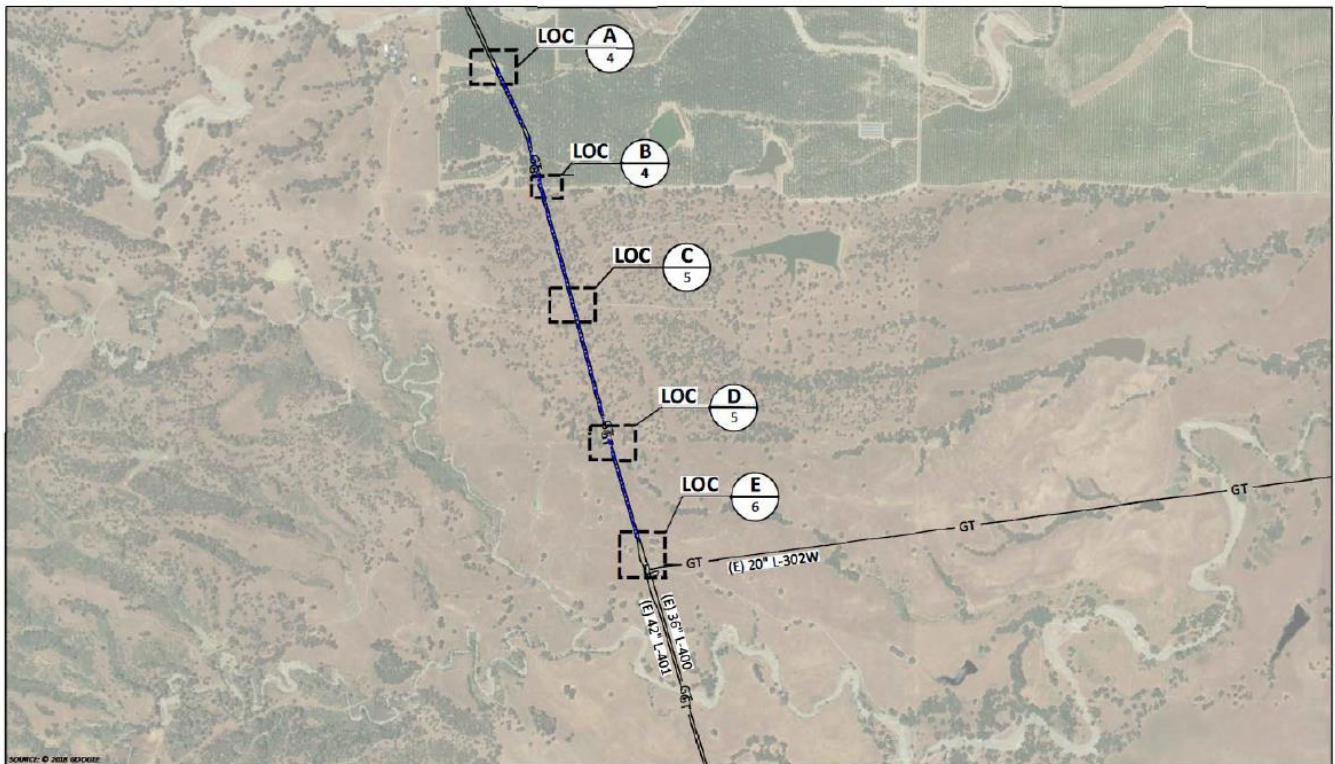
To grant permit coverage to an SPE, the Conservancy must determine the requested permit coverage is available and establish a legally enforceable contract (SPE Agreement) with the SPE. The SPE Agreement binds the SPE to the relevant terms of the Yolo HCP/NCCP permits, Implementing Agreement, and Yolo HCP/NCCP. In addition to executing the SPE Agreement, the SPE entity must submit a complete application package, pay both the standard Yolo HCP/NCCP land cover fees and supplemental SPE charges per the SPE fee policy approved by the Board in May 2022, and complete any other steps required by the contract. After these steps are complete, the Conservancy will issue a Certificate of Inclusion to the SPE.

The project results in 4.234-acres of impact to fee-paying land cover types, totaling \$3,210.74, the Conservancy will collect a supplemental charge not included in the land cover fees to aid the Conservancy in covering cost associated with implementation of the Yolo HCP/NCCP. Prior to the project receiving coverage as an SPE, the Conservancy will collect a total fee of \$13,210.74, which includes the mitigation fees and the \$10,000 supplemental contribution to cost recovery.

The Yolo Habitat Conservancy Implementation Advisory Committee received a presentation on the project at their June 29, 2022, meeting and voted to recommend that the Board of Directors allow the project to receive take coverage as a Special Participating Entity. Staff recommend approval of Pacific Gas and Electric’s C-1637 project because the project will only result in impacts to one natural community that the Conservancy tracks impacts to in the YHC Annual Report, 0.062-acres of permanent impact and 3.9-acres of temporary impact to the Grassland (all types) land cover type, of which there is ample acreage remaining for the Conservancy to issue.



Exhibit 1, PG&E C-1637 Vicinity Map



ATTACHMENTS:

Attachment A. 5.11.22 Application for coverage

