



 Approximate Project Boundary

Note: Boundaries are approximate, based on GIS data.  
Aerial Imagery: Google Map Service, dated May 2017.

**COMPASS LAND**  
GROUP

Existing Conditions Aerial Photograph  
Cache Creek  
Mining Permit and Reclamation Plan Amendment Project  
Yolo County, California

FIGURE 2

Date: 1/10/2018

**CA MINE ID No. 91-57-0008 – CEMEX Site**  
**Inspection Date: November 29, 2021**



Cemex Plant site & equipment – looking west from wet pit



Floating Dredge – looking north from south edge of wet pit



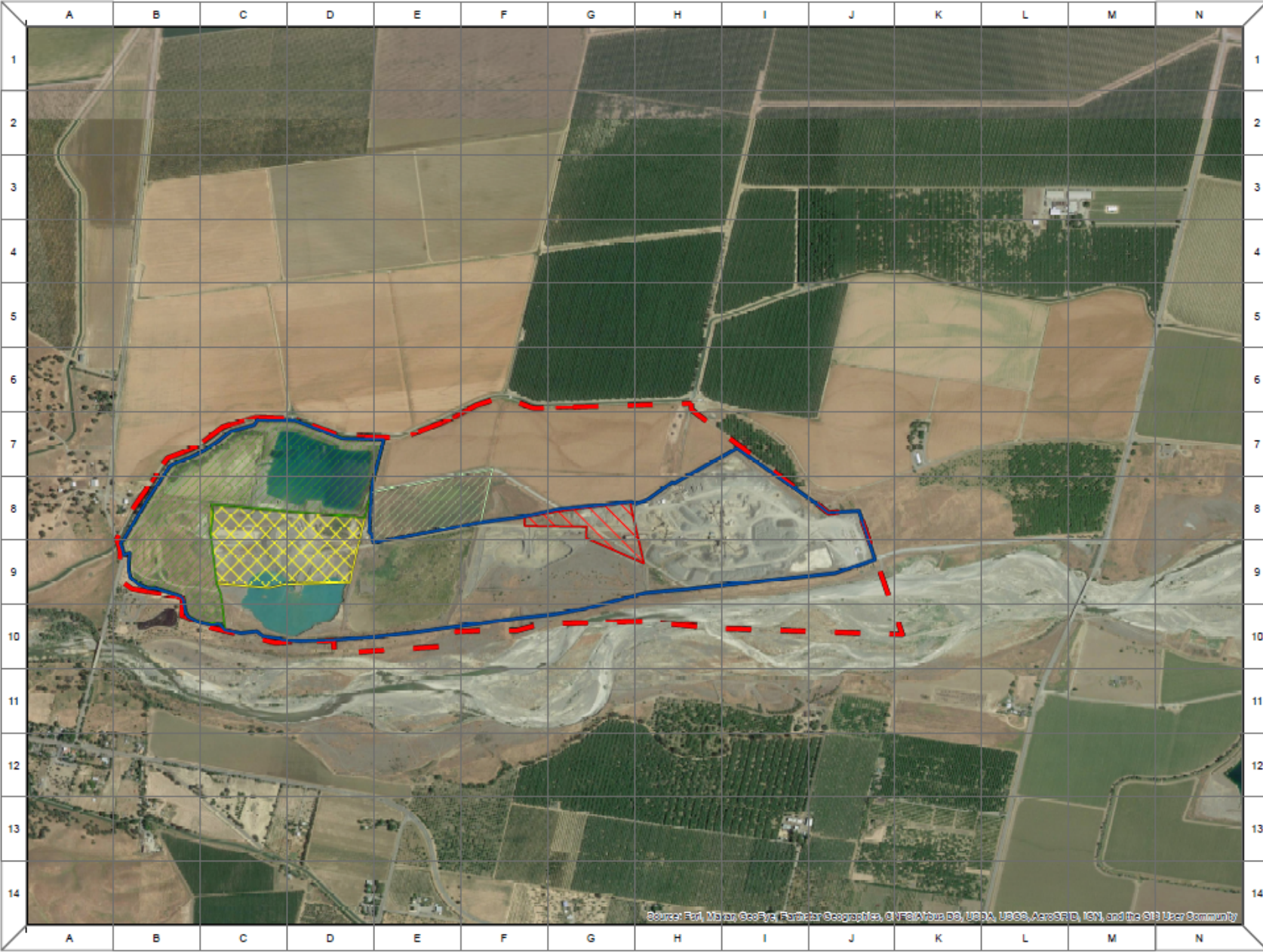
Floating Dredge – active mining - closeup



Working Conveyor – from dredge on left to south side of pit and on to plant site

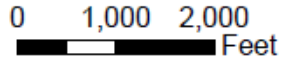
# Capay Mining & Reclamation

10/16/2020



-  Total Reclamation in Progress
-  Previously Mined Reclamation in Progress
-  Disturbed
-  Property Boundary
-  Area Currently being Mined
-  Proposed Mine Area in 2021

Total Area Disturbed: 30.3 ac  
 Total Area Reclaimed: 0 ac  
 Total Area Subject to RP: 312 ac



Source: Aerial, Mapbox, GeoEye, Earthstar Geographics, CNES/Airbus DS, USDA, USGS, AeroGRID, IGN, and the GIS User Community

CA MINE ID No. 91-58-0014 – Granite Construction Co. Capay  
Inspection Date: November 29, 2021



Active mining – West cell, Phase 2 – Looking south



Removing overburden for future mining – looking north



Conveyor from Phase 2 to plant site



Plant site – photo depicts clean, uncluttered site

**NOTES**

FOR FURTHER INFORMATION ON HABITAT AVOIDANCE AREAS SEE BIOLOGICAL ASSESSMENT FOR SYAR INDUSTRIES, INC. PREPARED BY ZENTNER & ZENTNER, PROJECT No. 473 SII, ISSUED 12/12/1995

ELEVATION INFORMATION:  
 DATUM IN USE AT PERMIT APPROVAL (1999) WAS NGVD-29 VERTICAL DATUM CHANGED TO NAVD-88 WITH THE 2006 LIDAR REMOTE SENSING DATA SUPPLIED BY WATERSHED SCIENCES, THERE IS A 2.6 +/- FOOT DIFFERENCE BETWEEN THE DATUMS. IN THE PERMITTING DOCUMENT 0 FEET WAS USED TO REPRESENT GROUND SURFACE, SHOWING ALL BELOW SURFACE DEPTHS AS A NEGATIVE VALUE.

SUPPLIED INFORMATION, NAD-83 CSPCS ZONE 2, NAVD-88 U.S. SURVEY FEET

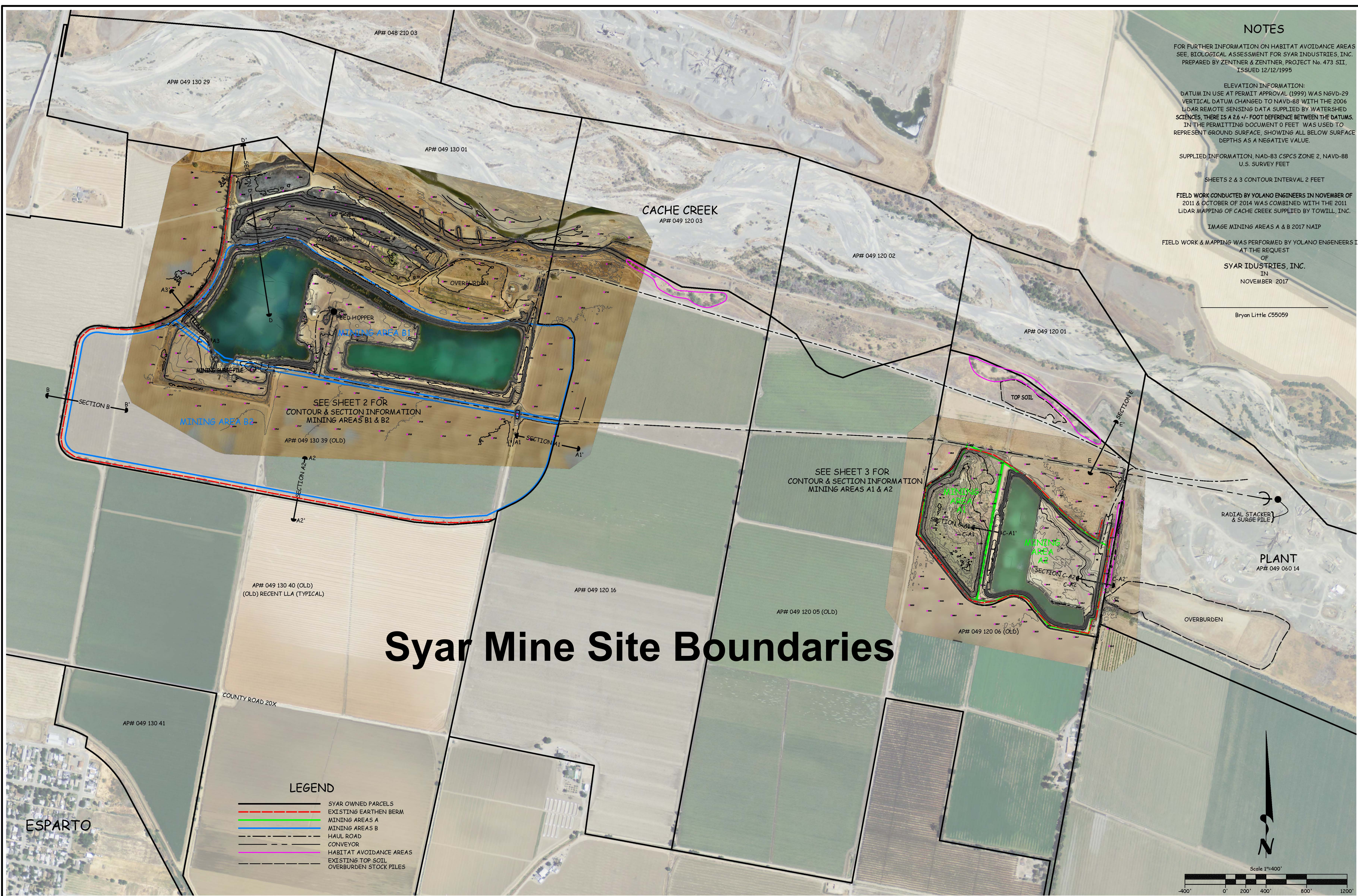
SHEETS 2 & 3 CONTOUR INTERVAL 2 FEET

FIELD WORK CONDUCTED BY YOLANO ENGINEERS IN NOVEMBER OF 2011 & OCTOBER OF 2014 WAS COMBINED WITH THE 2011 LIDAR MAPPING OF CACHE CREEK SUPPLIED BY TOWILL, INC.

IMAGE MINING AREAS A & B 2017 NAIP

FIELD WORK & MAPPING WAS PERFORMED BY YOLANO ENGINEERS INC. AT THE REQUEST OF SYAR INDUSTRIES, INC. IN NOVEMBER 2017

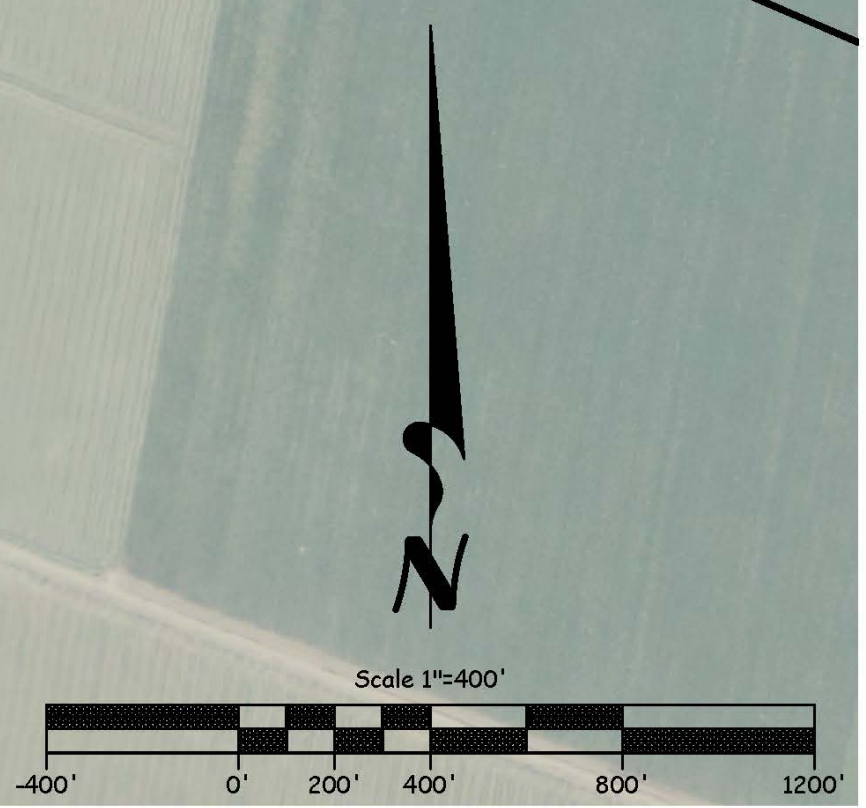
Bryan Little C55059



# Syar Mine Site Boundaries

**LEGEND**

	SYAR OWNED PARCELS
	EXISTING EARTHEN BERM
	MINING AREAS A
	MINING AREAS B
	HAUL ROAD
	CONVEYOR
	HABITAT AVOIDANCE AREAS
	EXISTING TOP SOIL
	OVERBURDEN STOCK PILES



YOLANO ENGINEER'S INC. DRAWN BY: Bryan Little DATE: 11/17/17 IMAGE DATE: 2017 N.A.I.P.	APPROVED BY: PROJ. NO. 7410 DWG. Madison 2017 Annual Report.dwg	REVISIONS	YOLANO ENGINEER'S INC. 2301 NAPA-VALLEJO HIGHWAY NAPA, CALIFORNIA 94558	PROJECT: OFF-CHANNEL MINING PLAN ANNUAL REPORT SYAR MADISON MINNING FACILITY YOLO COUNTY, CALIFORNIA	SHT. NAME SITE PLAN - OVERVIEW	SHT. NO. 1
						of 4

**CA MINE ID No. 91-57-0015 – Syar Site**  
**Inspection Date: November 29, 2021**



Easternmost stormwater basin, looking northeast toward CR89, showing recent cleanout/maintenance activity.



Westernmost stormwater basin, at north side of site, looking west. Cache Creek levee visible on right side of photo.




Soil stockpile signage and vegetation.




Plant site, looking east, showing that, although the site is idle, the site is well maintained.


Teichert Aggregates  
Esparto: Reiff/Mast Property  
Yolo County, California


California Mine ID: 91-57-0011


 Total Disturbed Area  
(Approximate)  
± 232 Acres


 2019 Disturbed Area  
0 Acres

Reclamation:

 Reclamation In Progress  
(Approximate)

 Reclamation Construction &  
Revegetation Completed,  
Monitoring in Progress  
(Approximate)

 Reclamation Completed:  
Signed Off  
0 Acres

 Property Boundary  
(Approximate)

Financial Assurance Amounts:

**Esparto - Reiff: \$ 565,000.00**

**Total: \$ 1,326,010**

Orthophoto Provided by  
Point Co. (June 13, 2019)



0 250 500 1,000 Feet

\*\* Boundary and area features were  
hand drawn. No liability is assumed  
for the accuracy of the data shown.



# Teichert Esparto Mine Site Boundaries

**CA MINE ID No. 91-57-0011 -Teichert Esparto Site**  
**Inspection Date: November 23, 2021**



Teichert-Esparto – Plant equipment has been shut down since September 2020



Teichert-Esparto – Plant equipment. Began processing material in




Teichert-Esparto – south edge of mine site, along north bank of Cache Creek. No change in bank erosion over past two rain seasons.




Teichert Aggregates  
Woodland: Schwarzgruber  
Yolo County, California


California Mine ID: 91-57-0006


# Teichert Schwarzgruber Mining Site Boundary


 Total Disturbed Area  
(Approximate)  
± 96 Acres


 2019 Disturbed Area  
(Approximate)  
0 Acres

### Reclamation:

 Reclamation In Progress  
(Approximate)

 Reclamation Construction  
& Revegetation Completed,  
Monitoring In Progress  
(Approximate)

 Reclamation Completed:  
Signed Off  
0 Acres

 Property Boundary  
(Approximate)

Financial Assurance Amount:  
\$ 708,675.00

Orthophoto Provided by  
Point Co. (June 13, 2019)



0 150 300 600 Feet

\*\* Boundary and area features were  
hand drawn. No liability is assumed  
for the accuracy of the data shown.

**CA MINE ID No. 91-57-006 -Teichert Schwarzgruber Site**  
**Inspection Date: November 23, 2021**



Aggregate loaded from stockpile for transport to project site



Mining with excavator – south side of Schwarzgruber pit



Reseeded slope with mining and conveyor in background



Recently reseeded slope, west side of pit – looking north

**CA MINE ID No. 91-57-002 -Teichert Woodland Plant Site**  
**Inspection Date: November 23, 2021**




Woodland Plant Site – looking east from  
access road adjacent to Cache Creek




Woodland Plant Site (active) looking east,  
showing stockpiles of material


*Teichert Aggregates  
Woodland: Plant Site  
Yolo County, California*


California Mine ID: 91-57-0002


 Total Disturbed Area  
(Approximate)  
± 130 Acres


 2019 Disturbed Area  
0 Acres

**Reclamation:**

 Reclamation In Progress  
(Approximate)

 Reclamation Construction  
& Revegetation Completed,  
Monitoring In Progress  
(Approximate)

 Reclamation Completed:  
Signed Off  
0 Acres

 Property Boundary  
(Approximate)

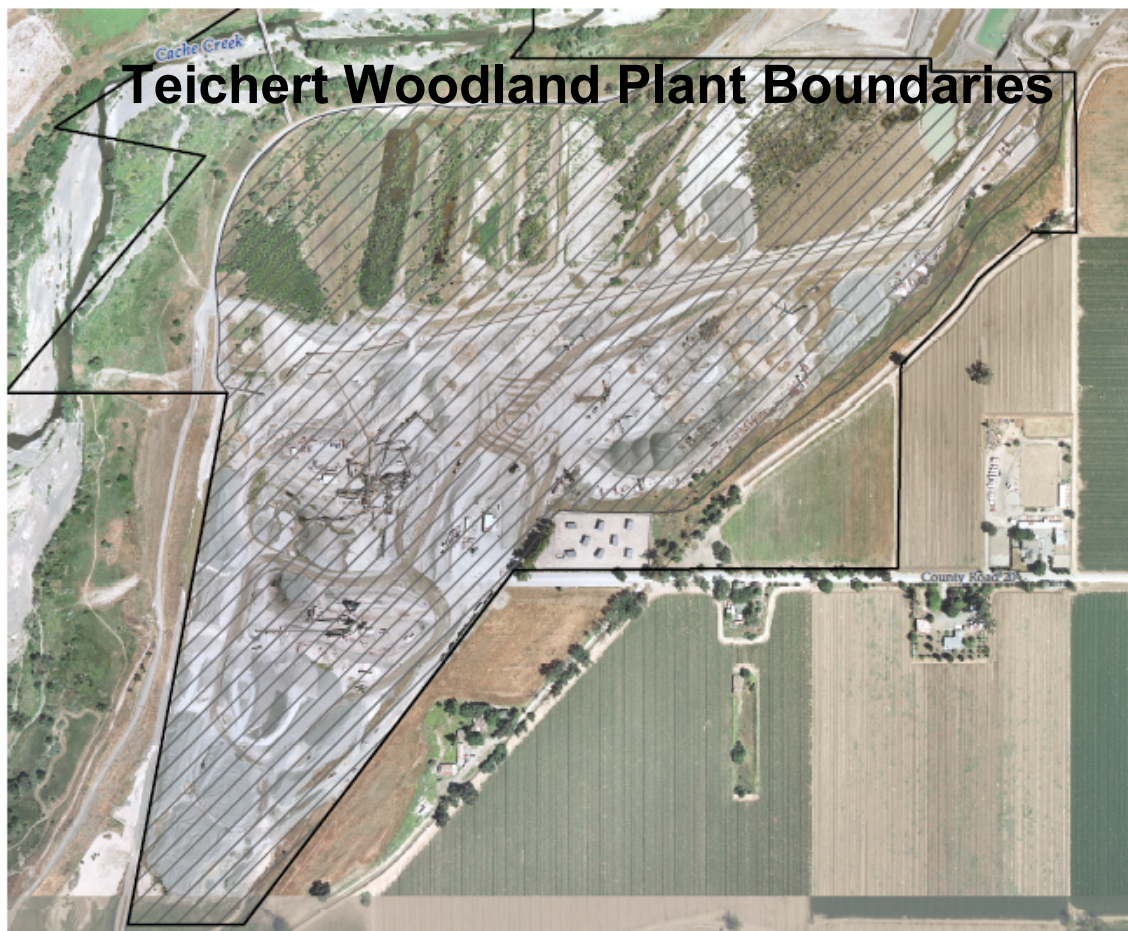
**Financial Assurance Amount:**  
\$ 507,037.00

*Orthophoto Provided by  
Point Co. (June 13, 2019)  
Background Aerial Photography  
Provided by ESRI Basemaps & Affiliates  
(Yolo County - April 13, 2018)*



0 200 400 800 Feet

*\*\* Boundary and area features were  
hand drawn. No liability is assumed  
for the accuracy of the data shown.*



# Teichert Woodland Plant Boundaries