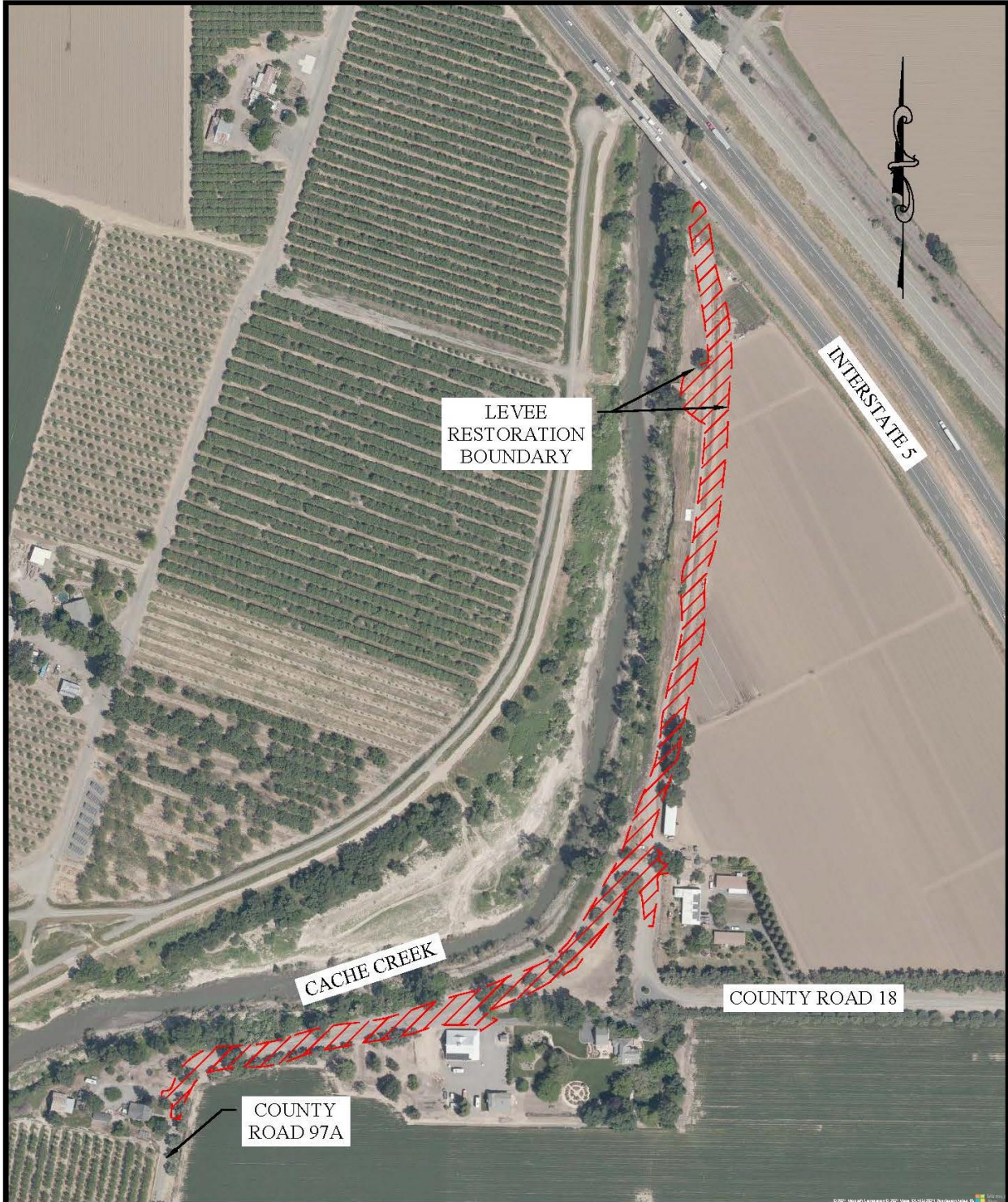


MBK
ENGINEERS
 455 University Avenue, Suite 100
 Sacramento, California 95825
 Phone: (916) 456-4400 • Fax: (916) 456-0253

**HUFF'S CORNER LEVEE RAISE &
 CHANNEL RECONFIGURATION PROJECT**

**FIGURE 2-1 - PLAN VIEW
 OVERALL PROJECT**

| | |
|-------------|------------|
| SCALE: | 1" = 300' |
| JOB NUMBER: | 5327-5.3.1 |
| DRAWN BY: | MC |
| DATE: | 4/26/2021 |
| SHEET: | N/A |

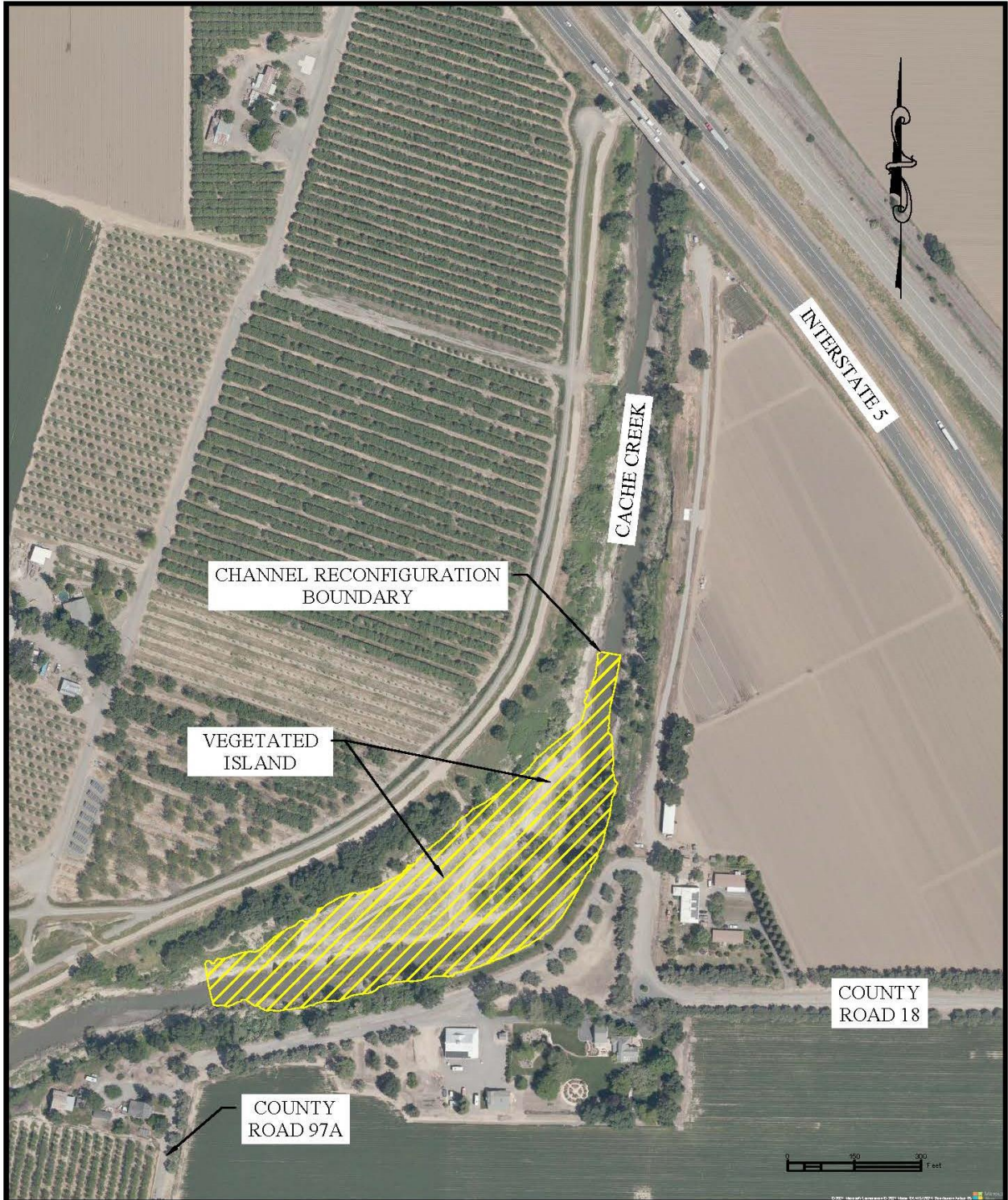


MBK
ENGINEERS
 455 University Avenue, Suite 100
 Sacramento, California 95825
 Phone: (916) 456-4400 • Fax: (916) 456-0253

**HUFF'S CORNER LEVEE RAISE &
 CHANNEL RECONFIGURATION PROJECT**

**FIGURE 2-2 - PLAN VIEW
 LEVEE COMPONENT**

| | |
|-------------|------------|
| SCALE: | 1" = 300' |
| JOB NUMBER: | 5327-5.3.1 |
| DRAWN BY: | MC |
| DATE: | 4/26/2021 |
| SHEET: | N/A |



MBK
ENGINEERS
 455 University Avenue, Suite 100
 Sacramento, California 95825
 Phone: (916) 456-4400 • Fax: (916) 456-0253

**HUFF'S CORNER LEVEE RAISE &
 CHANNEL RECONFIGURATION PROJECT**

**FIGURE 2-4 - PLAN VIEW
 IN-CHANNEL COMPONENT**

| | |
|-------------|------------|
| SCALE: | 1" = 300' |
| JOB NUMBER: | 5327-5.3.1 |
| DRAWN BY: | MC |
| DATE: | 4/26/2021 |
| SHEET: | N/A |