



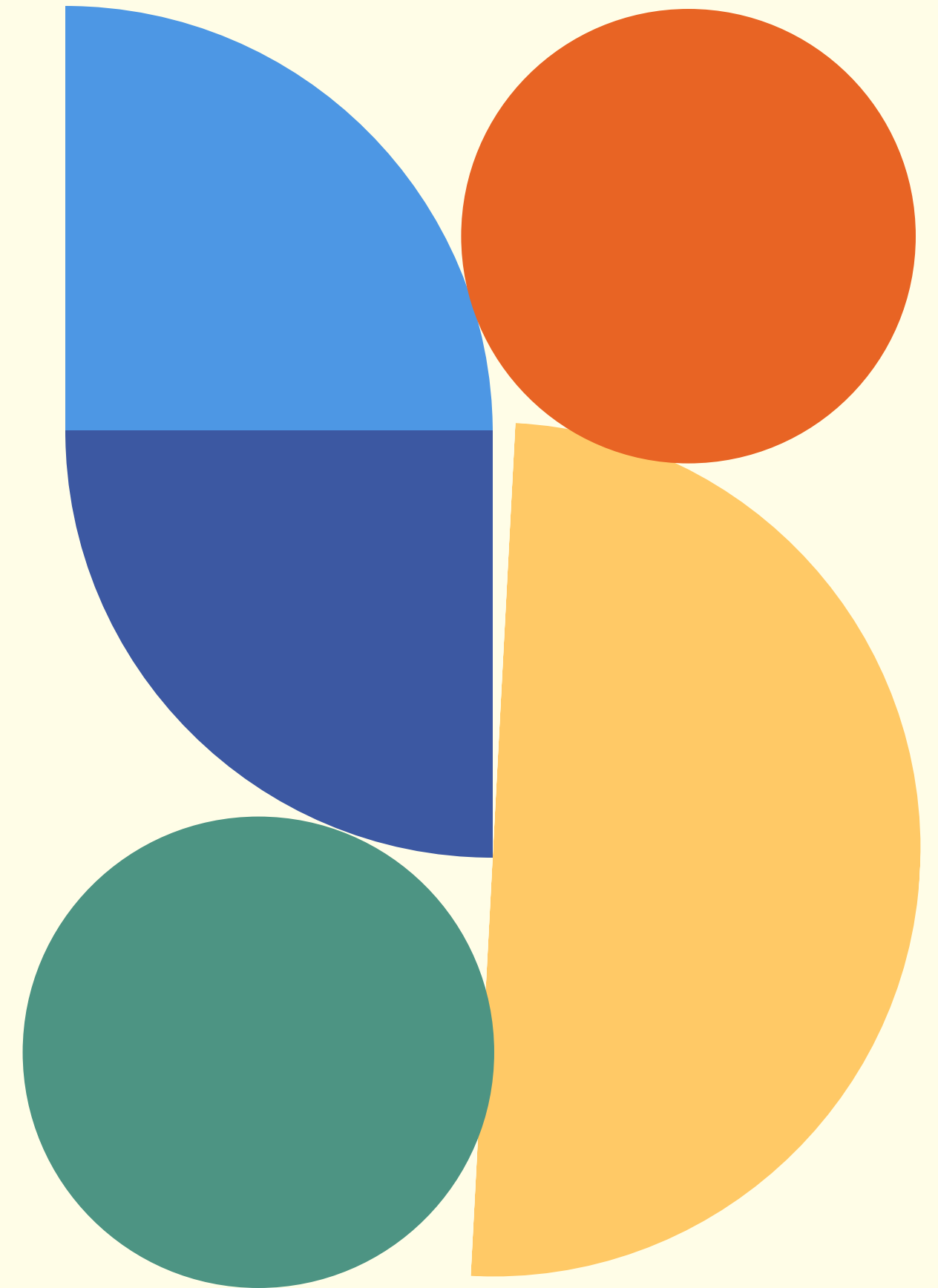
Yolo County
Health & Human Services Agency

Community Health Assessment and Community Health Improvement Plan:

Using Data & Collaboration to Improve Health

Rebecca Tryon, MS
HHSA Program Manager

February 7, 2023
Board of Supervisor's Meeting

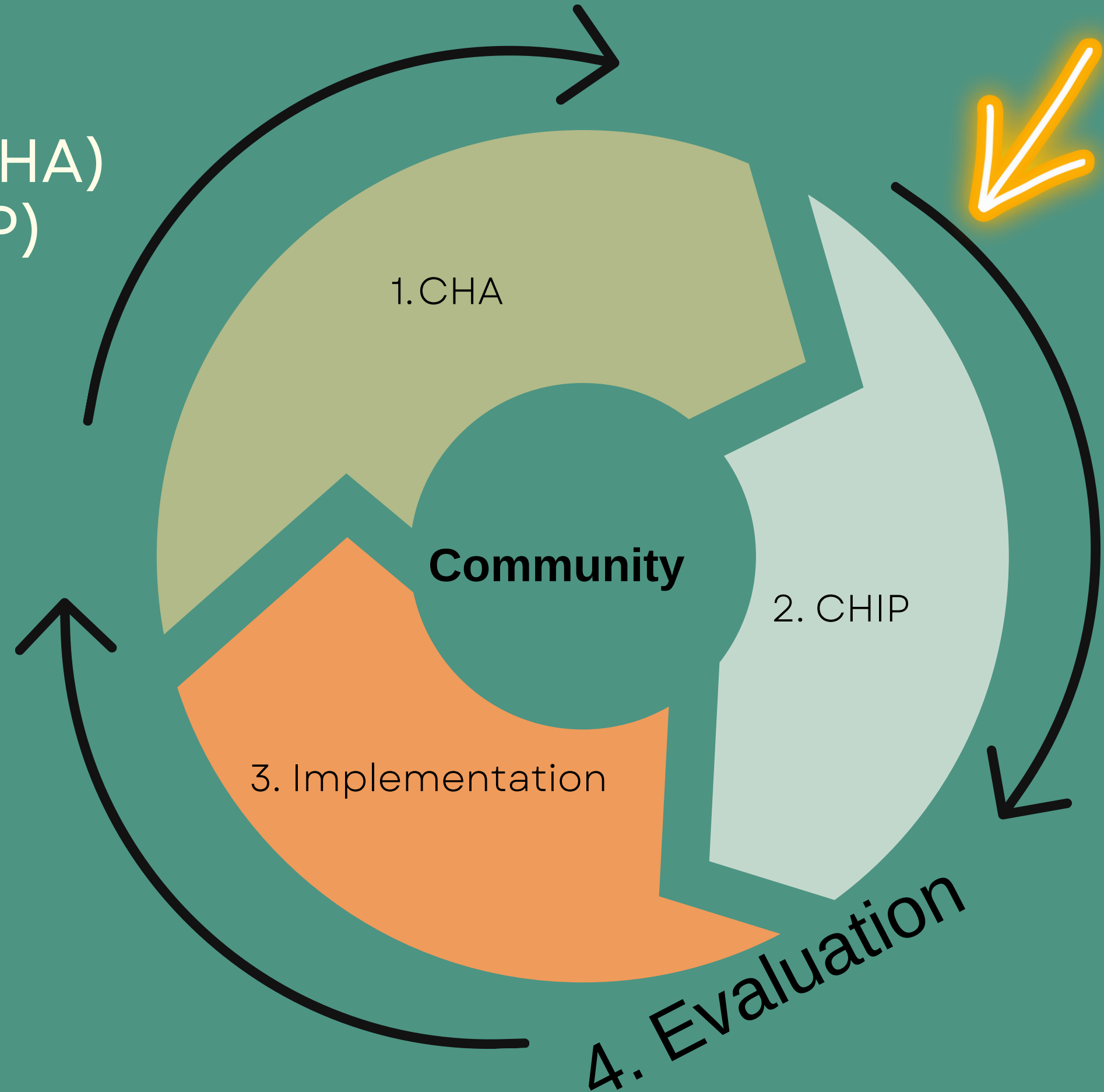


Healthy Yolo :

We are here

1. Assessment (2023-25 CHA)
2. Strategic Planning (CHIP)
3. Implementation
4. Evaluation (continuous)

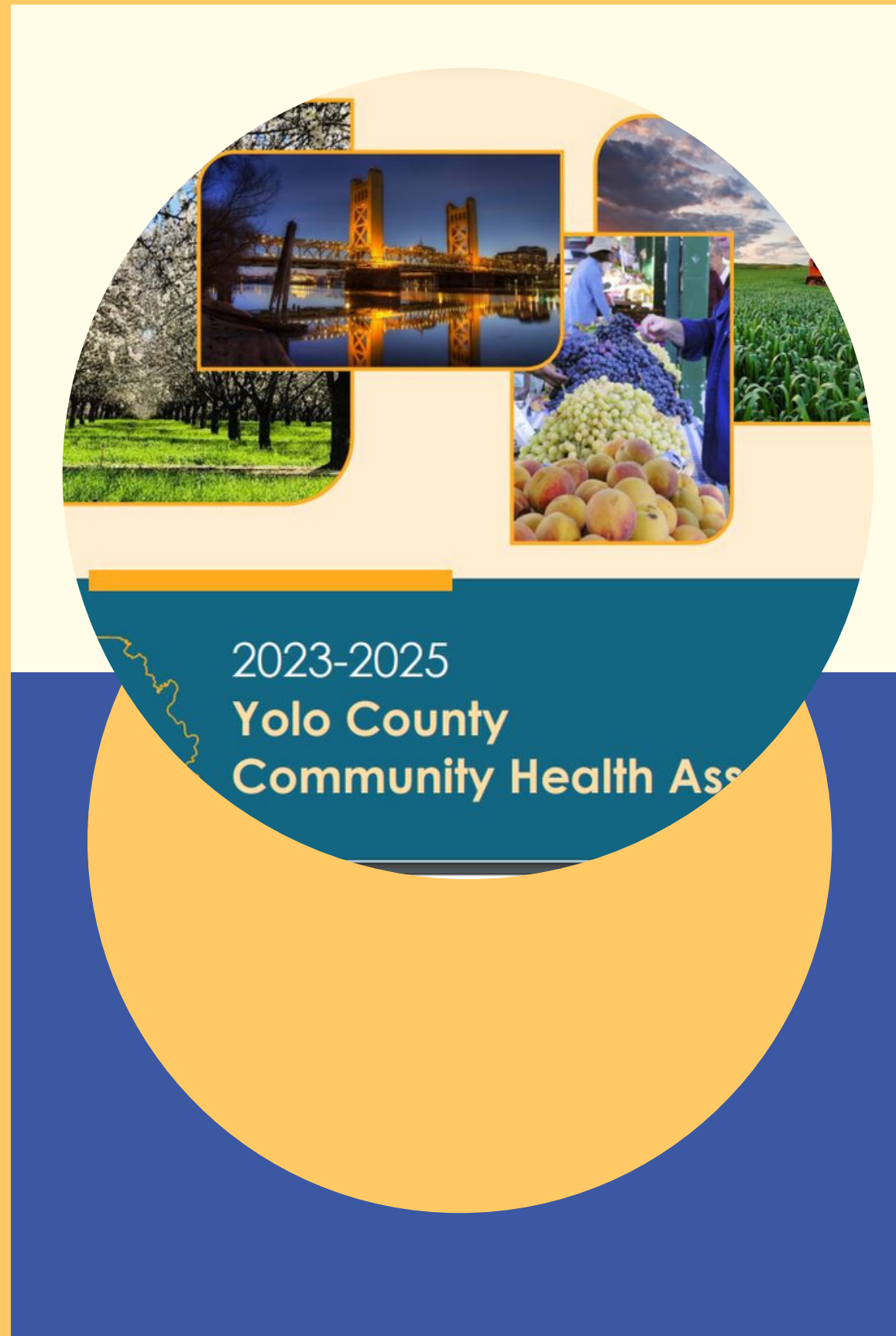
**For more info &
to access the CHA:
www.healthyyolo.org**



Community Health Assessment (CHA):

Comprehensive Data Collection:

- Community Health Status Survey (**1,500+** residents)
- **47** community health experts, social service providers, CBOs and residents interviewed
- **14** community service providers completed Service Provider Survey
- **100+** quantitative metrics from county, state, and federal sources
- Built upon 2022 **Community Health Needs Assessment**



Yolo County's prioritized

Significant Health Needs

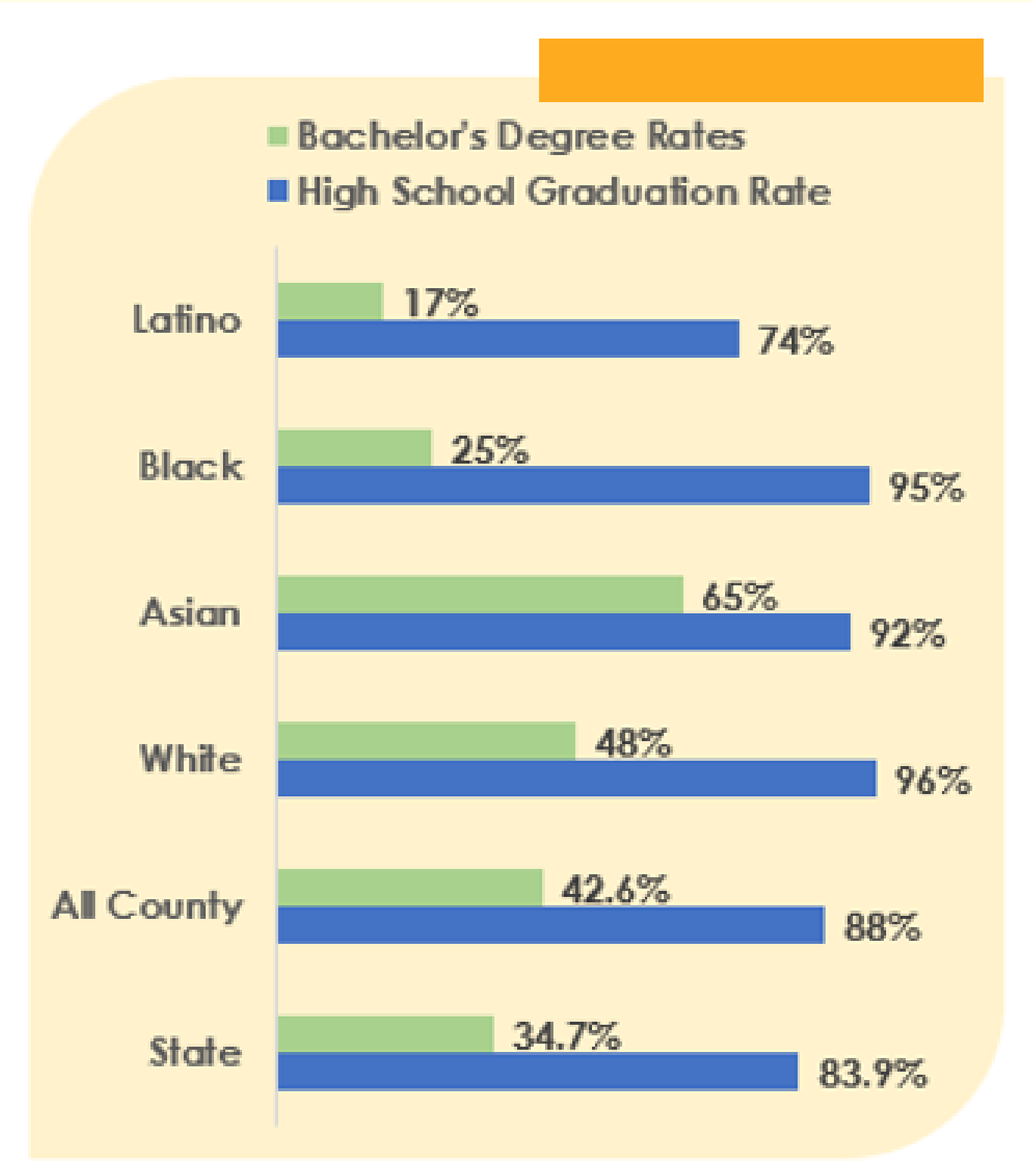
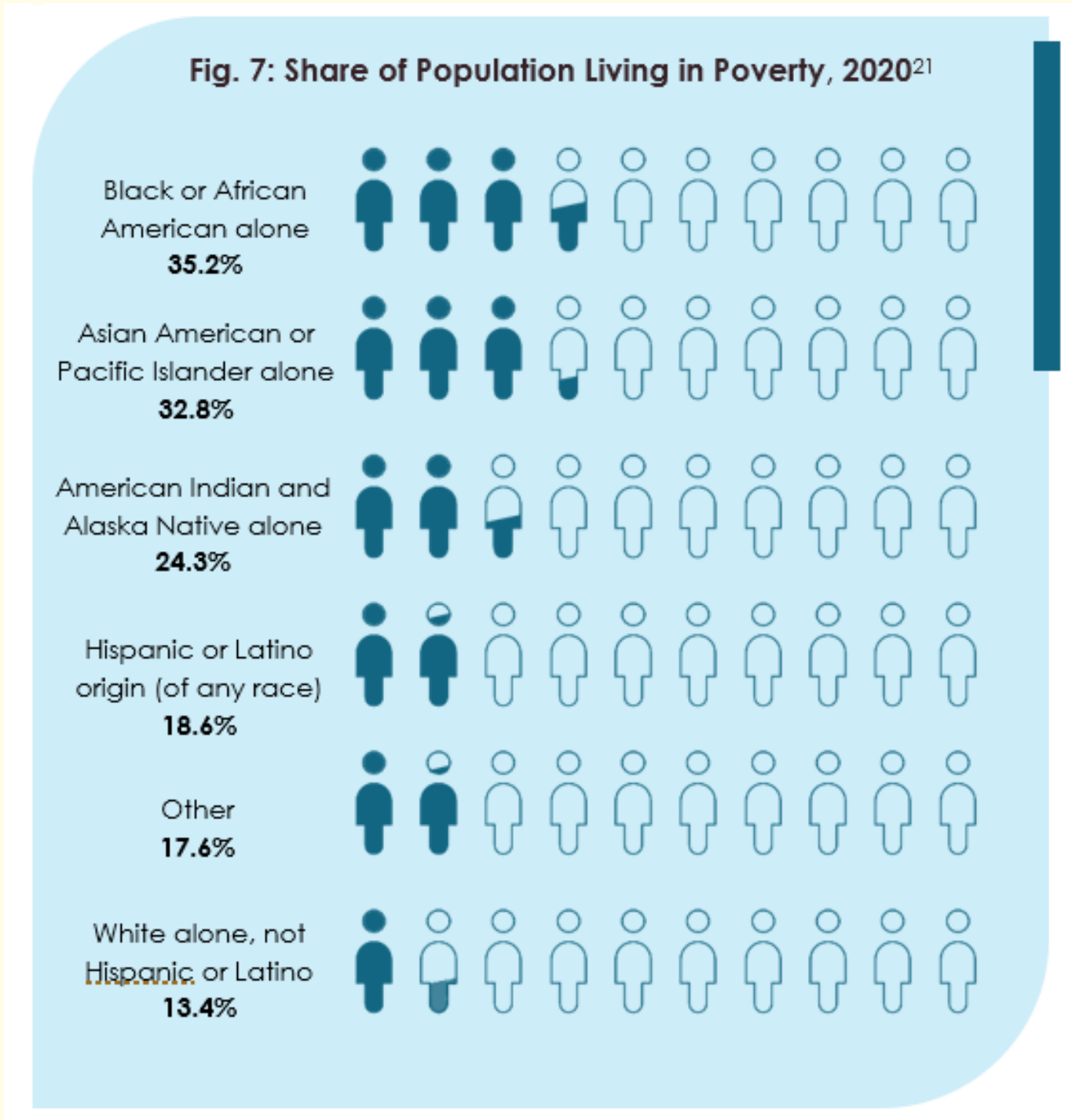
Source: 2023-2025 CHA

Significant Health Needs (SHNs)

Listed by priority

-  1 Access to Basic Needs Such as Housing, Jobs, and Food
-  2 Access to Mental/Behavioral Health and Substance Use Services
-  3 Injury and Disease Prevention and Management
-  4 Active Living and Healthy Eating
-  5 Access to Quality Primary Care Health Services
-  6 System Navigation
-  7 Access to Specialty and Extended Care
-  8 Increased Community Connections
-  9 Safe and Violence-Free Environment
-  10 Access to Functional Needs
-  11 Access to Dental Care and Preventive Services

Looking Upstream: Disparities in the Social Determinants of Health



Priority Populations:

- Unhoused individuals/families
- Migrant residents/farmworkers
- BIPOC residents
- Older adults
- Rural communities
- Those living in poverty

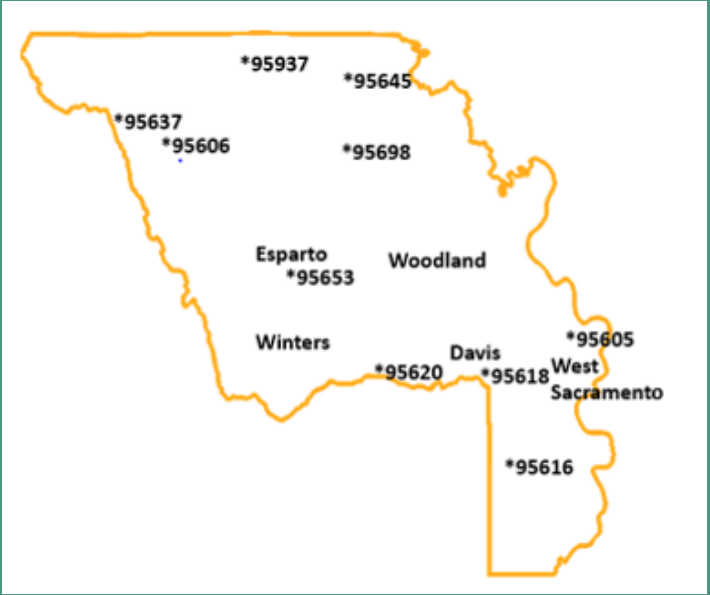
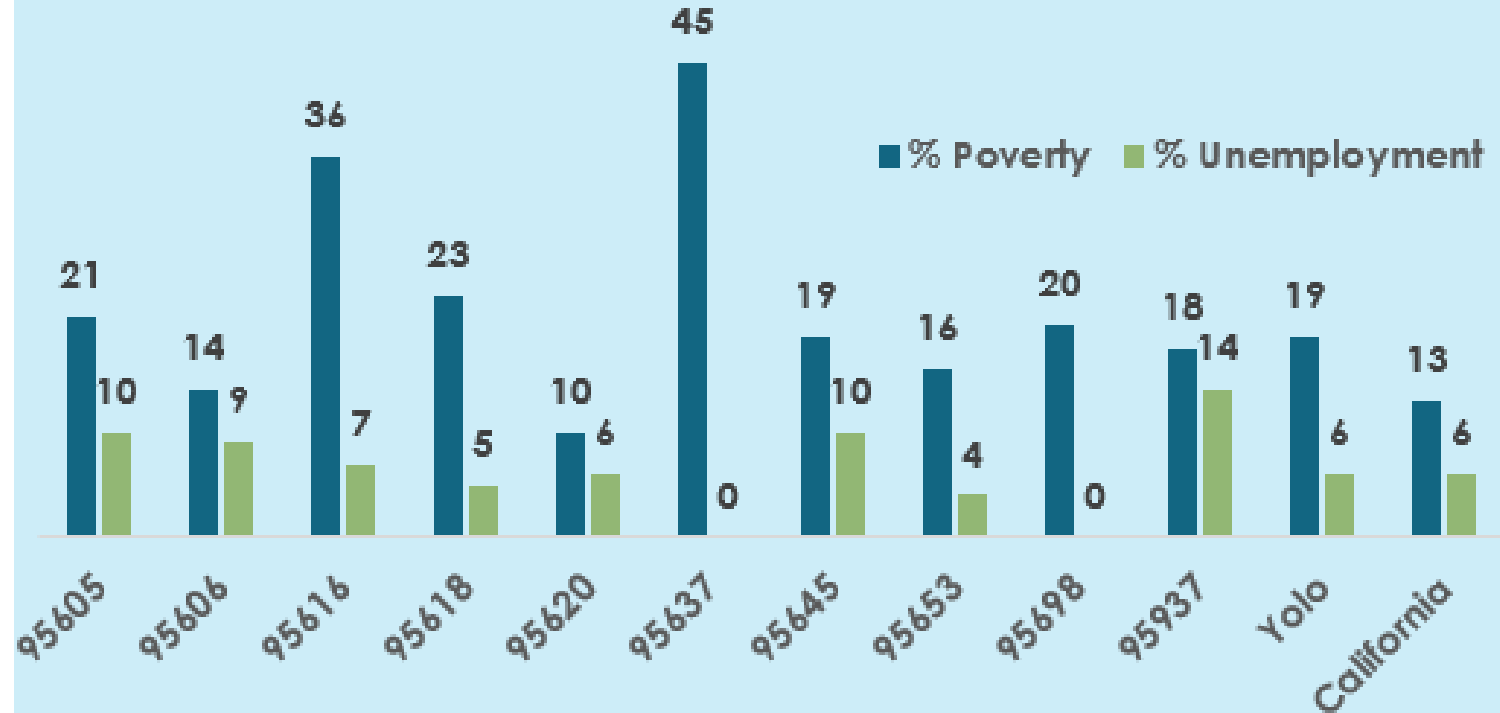


Fig. 12: Percentage of Population Living in Poverty and Unemployed, 2019



Source: 2019 American Community Survey 5-year estimates; U.S. Census Bureau

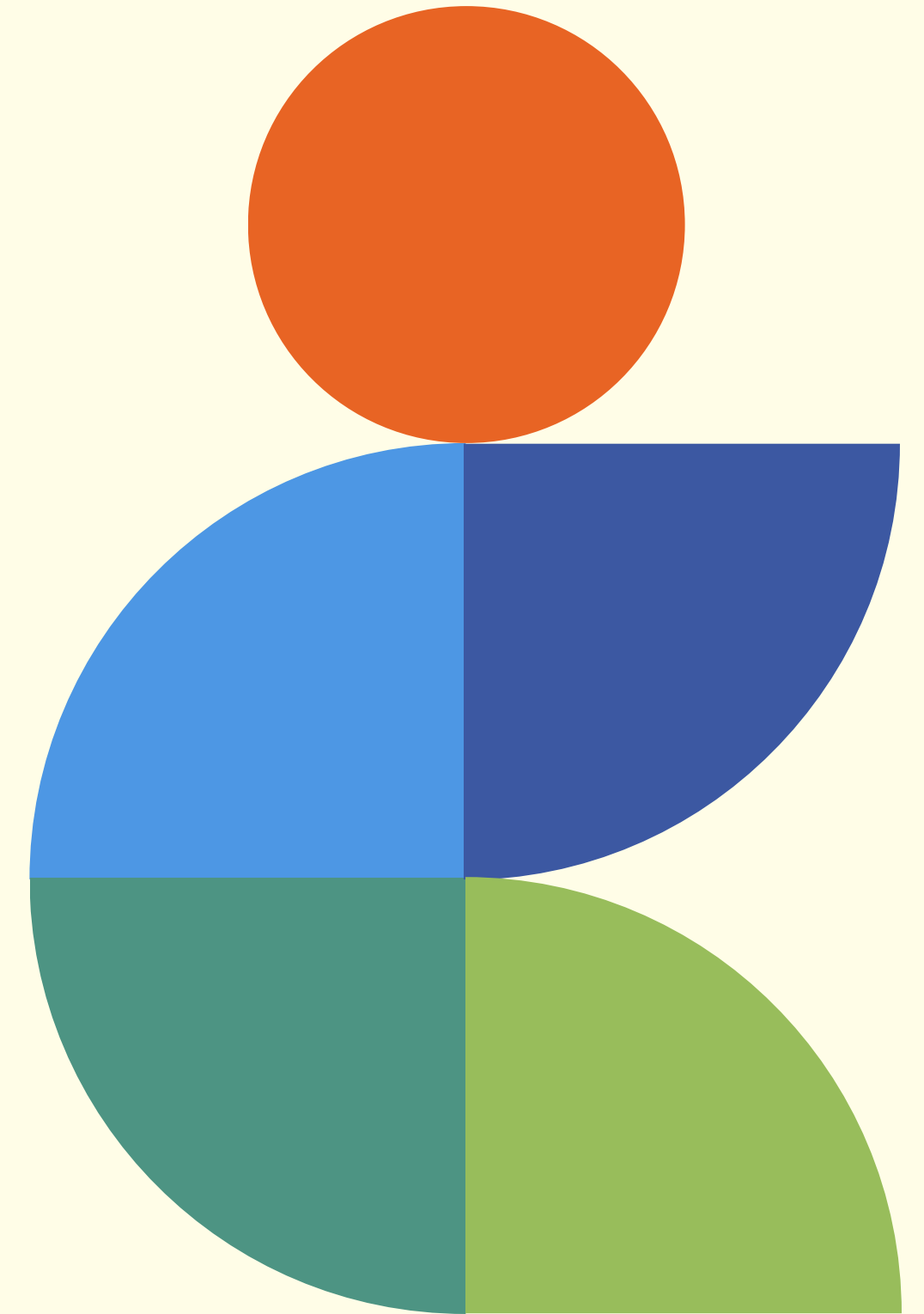
Moving from Analysis to Collaborative Action: Community Health Improvement Plan (CHIP)

Two Focus Areas for CHIP: Improving the Service Environment & Addressing Risk Behaviors



Multi-Sector CHIP Workgroup:

- CommuniCare Health Centers
- Community Advisors
- Empower Yolo
- First 5 Yolo
- Health Education Council
- National Alliance on Mental Illness (NAMI)
- Northern Valley Indian Health
- Partnership Health Plan of California
- PRO Youth and Families
- Progress Ranch Treatment Services for Children
- RISE, Inc.
- Sutter Davis Hospital
- UniteUs
- VCSS West Sacramento
- Western Center for Agricultural Health and Safety (UCD)
- Western Regional Agricultural Stress Assistance Program (WRASAP)
- Winters Health
- Woodland Memorial Hospital
- Yolo County Children's Alliance
- Yolo County Housing Authority
- Yolo County Office of Education
- Yolo Food Bank
- Yolo Healthy Aging Alliance



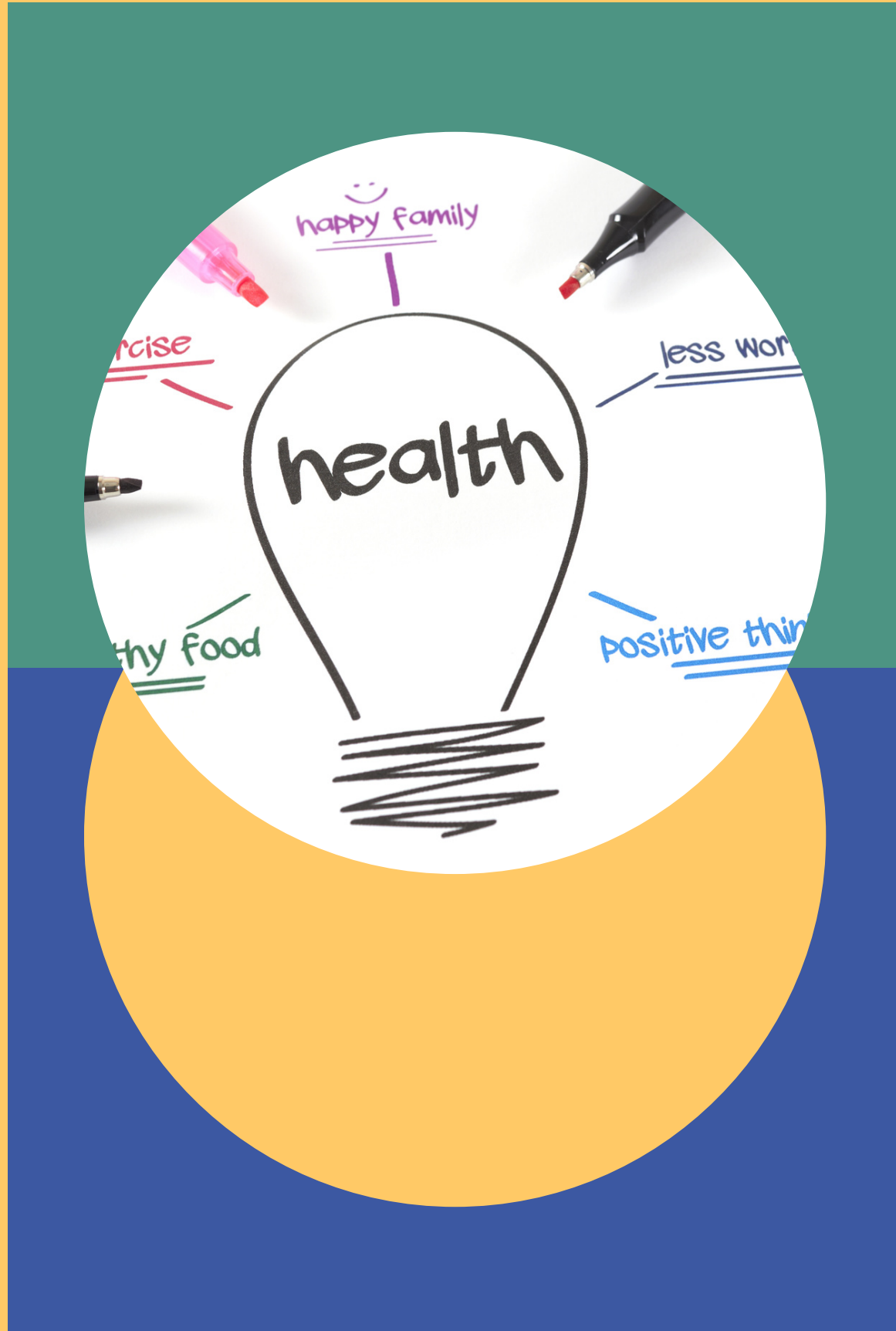


**Thriving
Residents**

CHA & CHIP address strategic goals:

- Health Equity
- Collective Impact Model for Community Change
- Addresses priority communities, such as families in poverty/older adults/homelessness
- Data-driven decisions and outcome metrics

BOS Engagement



- Review and share CHA (www.healthyyolo.org)
- Build a connection to the CHA for our cities through 2x2 meetings
- Support funding opportunities that address the 11 SHNs and root causes
- Provide input on CHIP interventions
- Participate in targeted intervention strategies as appropriate

Thank you,

rebecca.tryon@yolocounty.org