

# South Davis Library/Community Center Update

Feb 7, 2023

# Background

- ▶ Library/Community Center/Pool envisioned as part of the original parks Master Plan for Walnut Park.
- ▶ Long standing agreements to dedicate a portion of Walnut Park to Yolo County for purposes of a South Davis Library dating back to 2002.
- ▶ Agreement extended in 2007, and reconstituted into an ongoing MOU in 2012 stating that the parties agree to cooperate in accommodating a library facility in Walnut Park.

# Background



# Background

- ▶ With growth of South and Southeast Davis there has been a continual interest in expanding library services to communities that may experience barriers in access to the Mary L. Stephens Davis Branch Library in central Davis.
- ▶ City participated in the Yolo County Library Task Force and were assisting the County with library planning efforts and neighborhood input meetings.
- ▶ Marguerite Montgomery Elementary School library as an interim approach.

# Current Library Planning

- ▶ Renewed time and energy invested into exploring the feasibility of a South Davis library.
- ▶ Stakeholder engagement including: residents, library patrons, South Davis neighbors, local organizations such as Friends of the Library, DJUSD, and the City.
- ▶ Subject of multiple City/County 2x2's and City/County/DJUSD 2x2x2 to continue dialogue on project.
- ▶ County conceptual plans, cost estimates, and fiscal evaluation of construction and operations.

# Current Library Planning

## County Identification of Needs:

- ▶ A 2014 Yolo County Strategic Space Utilization Study found that County library space serving the Davis population would need to double to match population growth.
- ▶ The 2018-2035 Yolo County Library Facility Master Plan identifies construction of a South Davis library as a Phase One priority.
- ▶ Demographics point to strong potential for South Davis library to have a positive influence on access to facilities, computers, and other resources.
- ▶ The County identifies that many youth in the South Davis community do not currently have ready access to library services and that travel to the Stephens Library, particularly by modes other than vehicle, presents barriers to ready access.
- ▶ Conjunctive uses, such as community center

# Current Library Planning

## City Identification of Needs:

- ▶ Public meeting space for City, County or community meetings in South Davis. Facilitate timely and accessible outreach as well as promote grassroots organization of community endeavors.
- ▶ Space in South Davis for community needs during emergencies. Conjunctive use as warming center, cooling/smoke relief center, power outages, and general space for gathering during times of extreme weather events or other emergencies would be valuable.
- ▶ Space options for indoor youth programming in South Davis are limited. Having the possibility of partnering with the County Library for future expansion of needed youth programming needs by the City, School District, or community partners would be advantageous.

# Current Project Status



SOUTH DAVIS LIBRARY & EDUCATION CENTER

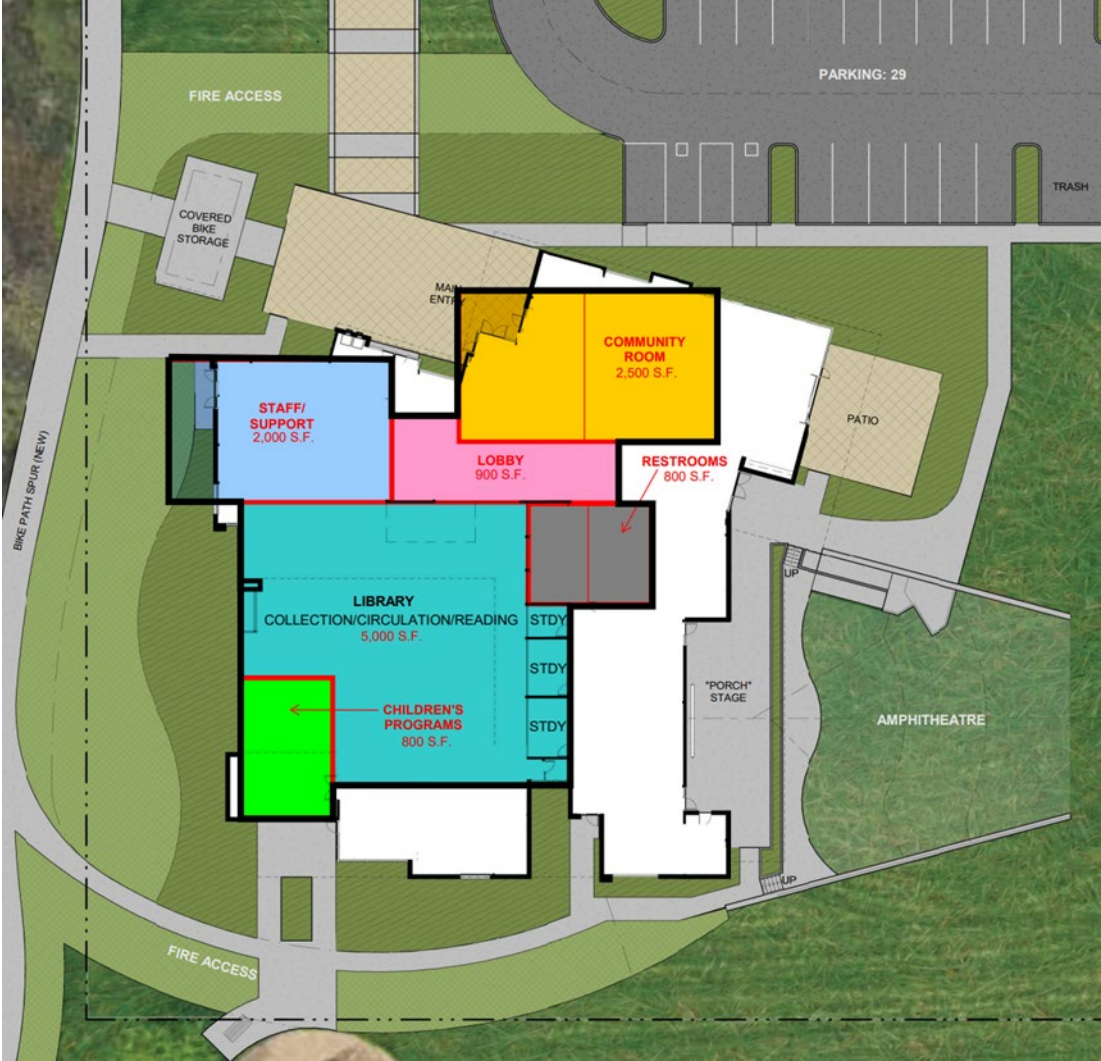
SITE PLAN/FLOOR PLAN  
SCALE 1"=20'-0"



ENTRY PLAZA - LILLARD AVE

W&P ARCHITECTS

# Current Project Status



# Current Library Planning

## Projected County Costs

- ▶ Projected Cost to Construct in 2025: \$21,330,051
- ▶ Current County Funding:
  - State Grant - \$8,615,540
  - Current Davis Library Tax - \$5,515,540
  - Yolo County Library Funds - \$3,100,000

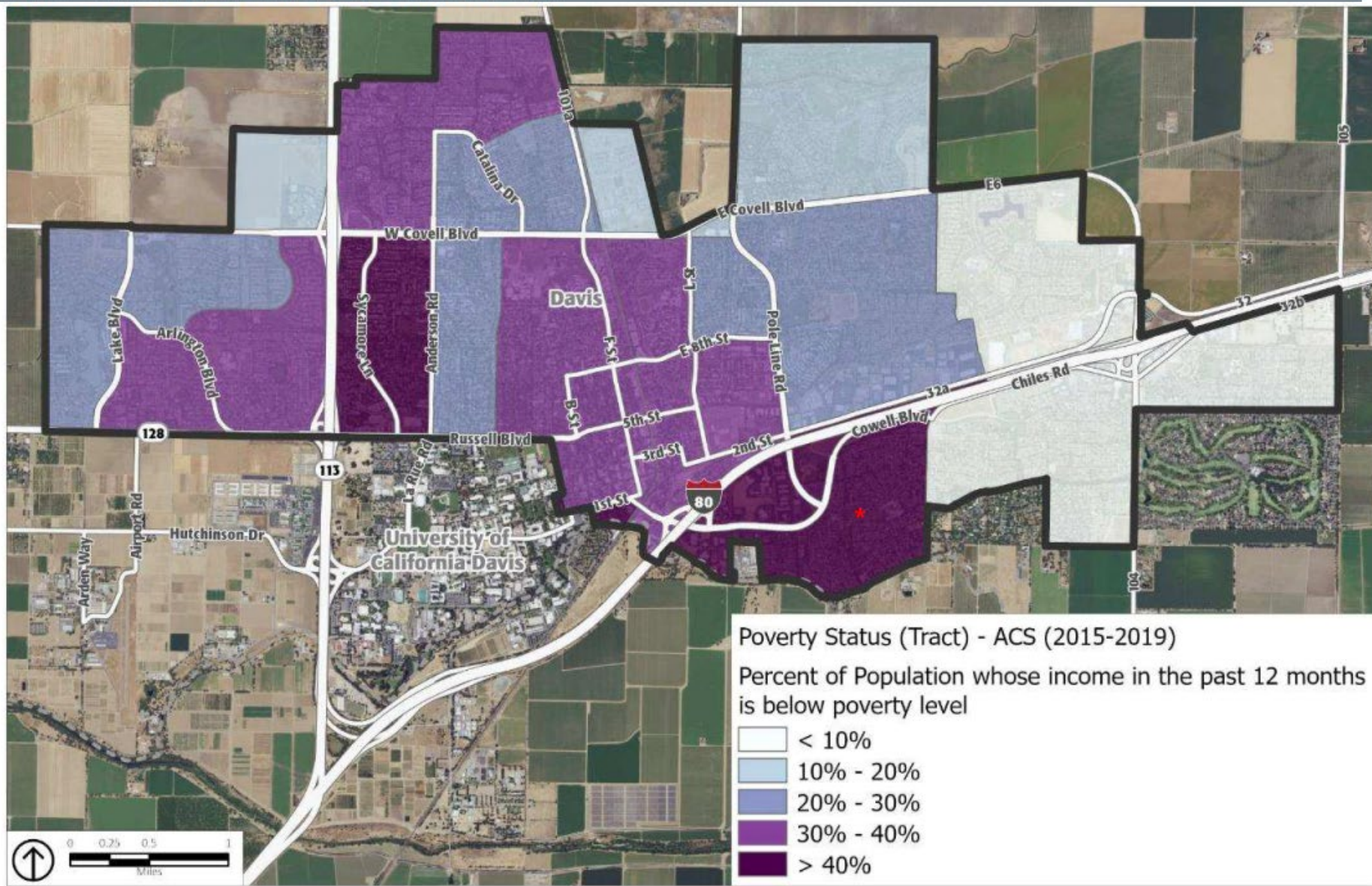
**Total Current Funding - \$17,231,080**

**Funding Gap \$4,098,971**

## Recommendations/Next Steps

- ▶ Authorize the Council subcommittee to engage with the County Board of Supervisors discussion on the south Davis Library project (anticipated for Feb 21) to signal strong support for the project on behalf of the Davis City Council.
- ▶ Should the County decide to proceed with the South Davis Library project, authorize the Council subcommittee to work with the City Manager to incorporate a proposal for local financial support to assist the County in South Davis Library construction costs, including but not limited to utilization of American Rescue Plan Act (ARPA) and Park Development Impact fees, as part of the 2023/25 budget proposal.

Figure 18: Poverty Status, City of Davis, 2015-2019



Source: California Poverty Measure Data for Libraries (Excel) filtered for Yolo County Library branches, accessed 3/18/2022 at <https://www.library.ca.gov/grants/infrastructure/>

Location	Main Library Name	10.5 Name	10.6 Street Address	10.7 City	10.8 Zip Code	10.9 Zip+4 Code	California Poverty Measure (CPM) % of population in poverty
CLARKSBURG BRANCH LIBRARY	YOLO COUNTY LIBRARY	CLARKSBURG BRANCH LIBRARY	52915 NETHERLANDS AVE.	CLARKSBURG	95612	229	7.71
WINTERS BRANCH LIBRARY	YOLO COUNTY LIBRARY	WINTERS COMMUNITY LIBRARY	708 RAILROAD AVENUE	WINTERS	95694	1646	11.95
ESPARTO BRANCH LIBRARY - ESPARTO UNION HIGH	YOLO COUNTY LIBRARY	ESPARTO REGIONAL LIBRARY	17085 YOLO AVE.	ESPARTO	95627	2081	14.98
YOLO BRANCH LIBRARY	YOLO COUNTY LIBRARY	YOLO BRANCH LIBRARY	37750 SACRAMENTO ST.	YOLO	95697	156	15.85
KNIGHTS LANDING BRANCH LIBRARY	YOLO COUNTY LIBRARY	KNIGHTS LANDING BRANCH LIBRARY	42351 THIRD ST.	KNIGHTS LANDING	95645	517	17.26
A. F. TURNER BRANCH LIBRARY	YOLO COUNTY LIBRARY	A. F. TURNER COMMUNITY LIBRARY	1212 MERKLEY AVENUE	WEST SACRAMENTO	95691	2710	20.46
DAVIS BRANCH LIBRARY	YOLO COUNTY LIBRARY	MARY L. STEPHENS DAVIS BRANCH LIBRARY	315 E. 14TH ST.	DAVIS	95616	2029	40.91

# California Department of Water Resources (DWR) Disadvantaged Communities Mapping Tool showing City of Davis, CA. Generated on March 18, 2022.

