

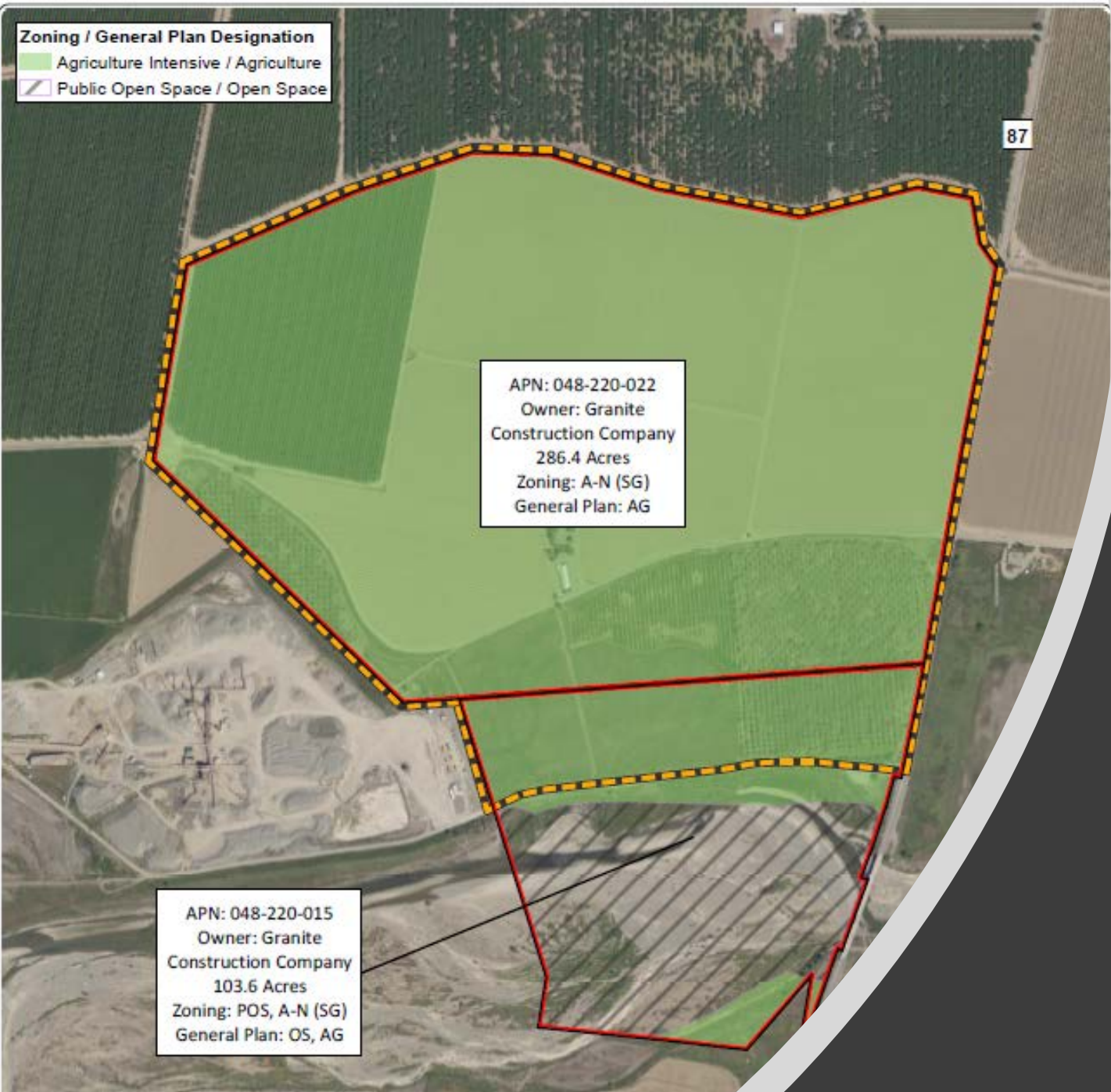


Zoning / General Plan Designation

-  Agriculture Intensive / Agriculture
-  Public Open Space / Open Space



APN: 048-220-022
Owner: Granite
Construction Company
286.4 Acres
Zoning: A-N (SG)
General Plan: AG

APN: 048-220-015
Owner: Granite
Construction Company
103.6 Acres
Zoning: POS, A-N (SG)
General Plan: OS, AG

GRANITE ESPARTO MINING AND RECLAMATION PROJECT

MODIFICATION TO CONDITIONS AND DEVELOPMENT AGREEMENT (NR#2023-02)

Yolo County Board of Supervisors
February 21, 2023

OVERVIEW: REQUESTED ACTION

- Amendment to Granite Esparto **permit** COA #24 to remove deadline for completion of mandatory bank modifications
 - Bank modifications still required prior to mining within 700' of Cache Creek, just removes date-specific deadline
- Amendment to Granite Esparto **development agreement** to remove Section 4.2.3
 - Will conform the language in the Esparto DA to that of the other operators

