



October March  
**2022-2023**



**01**

HHSA Hired Ag Labor Coordinator, Rodrigo Lopez

**02**

Creation of Financial Assistance Program for Farmworkers in Yolo County

**03**

Creation Website & Farmworker Resource Guide

**04**

Outreach

**05**

Upcoming Outreach and Events

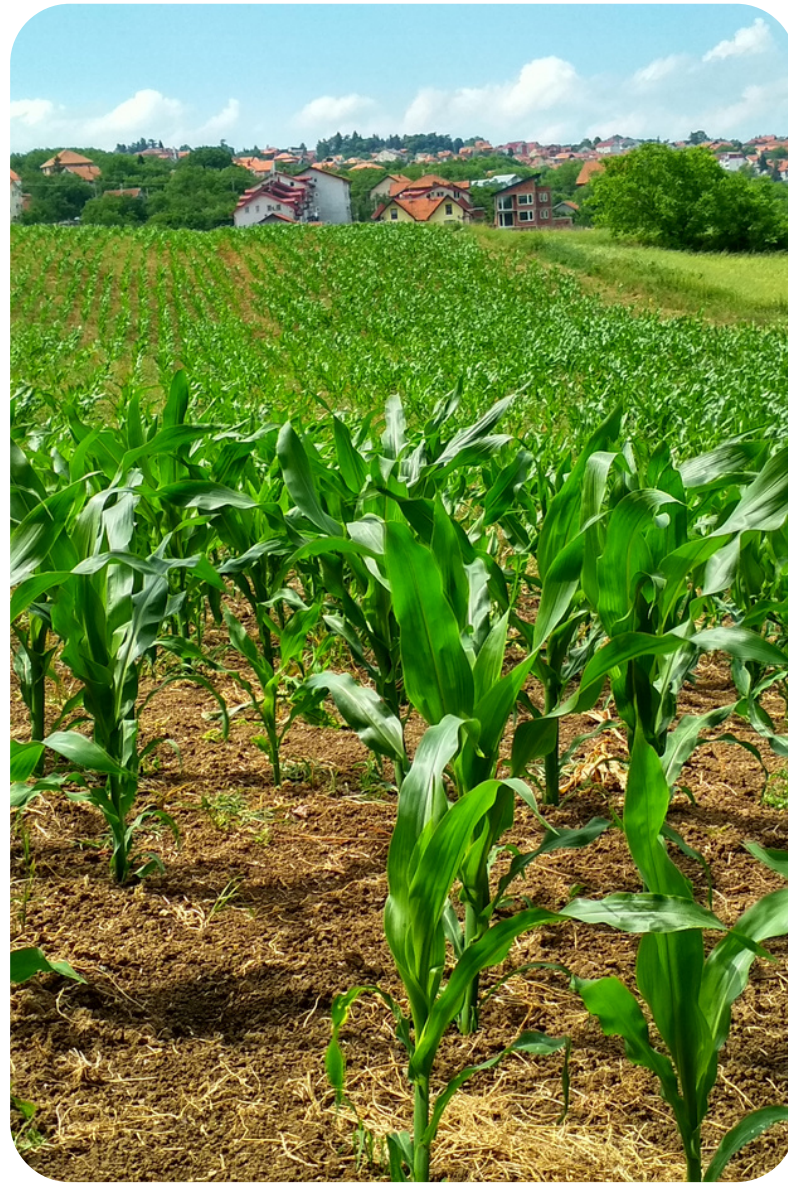
# Rodrigo A. Lopez

## Introduction

Hello my name is Rodrigo Lopez and I come from a small town in the Central Valley, Huron, California. I started my educational career at West Hills College Coalinga and eventually transferred to CSU, Sacramento. I earned my Bachelor's Degree in Social Work and a Minor in Counseling. I have worked in non-profits, K-12 schools, and Woodland Community College. My biggest motivation has been my parents and my community. As a former farmworker and son of lifelong farmworkers, I understand the specific needs of the agricultural labor community and my greatest passion is to serve the agricultural community of Yolo County.



# Financial Assistance Program for Farmworkers



- **December - January**
  - **Create Application**
  - **Create Flyer**
  - **Develop Website**
  - **Develop Farmworker Resource Guide**
- **January 25 - Partners Meeting**
- **February 1st Open Application**
  - **300 applicants**
- **Screen Applications**
  - **200 Approved**
- **Distribution Day March 7th**
  - **Approved Applicants not available on Distribution Day will get funds home delivered**
  - **Funding will be issued on a prepaid Mastercard**

# WEBSITE & FARMWORKER RESOURCE GUIDE

## HOUSING

**EMPOWER YOLO**  
 (530) 661-6336 - Emergency shelter and support services for victims of domestic violence, sexual assault and human trafficking

**FOURTH AND HOPE - Emergency Shelter**  
 (530) 661-1218 - Emergency Shelter for Adults 18+. Please call ahead for eligibility and availability.

**Yolo County Housing Authority**  
 (530) 662-5428 - Affordable housing and housing choice voucher programs for low to extremely low income eligible families, elderly or persons with disabilities and seasonal farm worker housing in Yolo County.

## FOOD RESOURCES

**CalFresh**  
 You can apply for the CalFresh program online at [GetCalFresh.org](http://GetCalFresh.org) or you can text "FOOD" to 74544 to apply over the phone.

**Yolo Food Bank**  
 (530) 668-0690 - Call to find a food distribution center near you.

## EMPLOYMENT REOURCES

**YoloWorks**  
 Woodland: (530) 661-2641  
 West Sacramento: (916) 375-6307  
 The Employment Center staff are available to assist participants with resumes and job search techniques.

**CalJOBS**  
 1-800-758-0398 - Job Seeker Help Desk.

**California Human Development (CHD)**  
 (530) 662-9601 - Provides a variety of employment services and support to farmworkers and farmworker family members.

## PUBLIC ASSISTANCE INFO

**BenefitsCal**  
[BenefitsCal.com](http://BenefitsCal.com)  
 Apply online for CalFresh, Cash Aid (CalWORKs), Medi-Cal and other resources!

**Medi-Cal**  
 1-855-278-1594 - For new applications, contact the Intake Call Center or apply online at <https://benefitscal.com/>

**WOMEN, INFANTS & CHILDREN (WIC)**  
 (530) 666-8445 - WIC is a supplemental food, nutrition education, and breastfeeding support program.

## LOCAL INFORMATION

**2-1-1 Yolo County**  
 Dial 2-1-1 for more information on food, legal assistance, healthcare, housing, income and employment, mental health, substance abuse, transportation, and many more services and programs.



## CONTACT US

- ☎ 530-379-3465
- ✉ [agworks@yolocounty.org](mailto:agworks@yolocounty.org)
- 🌐 [www.yoloworks.org](http://www.yoloworks.org)
- 📍 25 N. Cottonwood St  
Woodland, CA 95695



## FARMWORKER RESOURCE GUIDE



**SUPPORTING OUR FARMWORKERS WITH DIGNITY AND RESPECT IN YOLO COUNTY!**



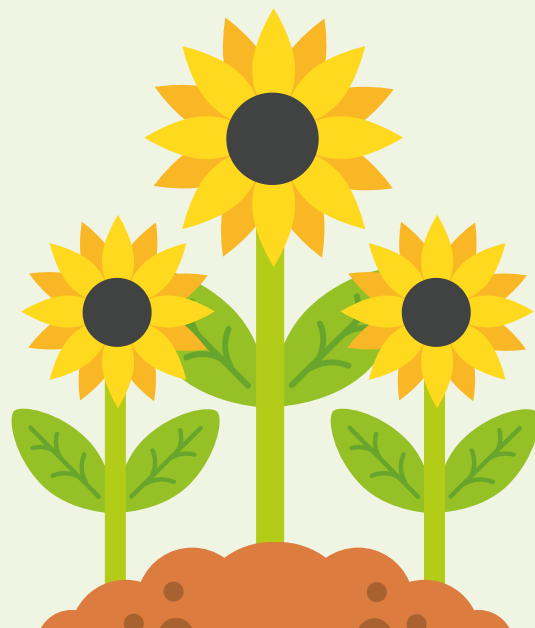
Línea directa para trabajadores del campo: llamar o enviar mensaje de texto al 530-379-3465  
 Farmworker Hotline: call or text at 530-379-3465



✕ Financial Assistance for Farmworkers in Yolo County

## ^ Resources

- COVID-19 Information
- Education
- Employment Resources
- Legal Assistance
- Immigration Information
- Labor Rights
- Housing
- Food Resources
- EDD/ Unemployment Information
- Public Assistance Information
- Violence - Domestic / Sexual



[www.yoloworks.org](http://www.yoloworks.org)

# Outreach

## October 2022 to March 2023

Type of Outreach	# of Contacts/ Participants	Needs/ Requests
<b>Phone Calls</b>	25 Hotline Calls	Housing/ Shelter, Support Paying Medical Bills, Request Legal Services
<b>Rise Farmworker Reunion</b>	40+ farmworkers	Outreach event, Distribute information about Yolo County Services.
<b>Sierra Orchard Farms</b>	4 farmworkers	Outreach event, Distribute information about Yolo County Services.
<b>Full Belly Farms</b>	Human Resources	Delivered Medi-Cal and CalFresh information. Farmworker Hotline information.

# Upcoming Events

<b>Outreach Type</b>	<b>Date</b>	<b>Information</b>
Farmworker Reunion at Rise	3/10/2023	Present Yolo County services and resources
Winters Health Fair	3/11/2023	Present Yolo County services and resources
Cesar Chavez Long Sleeve Shirt and Bandana Drive	3/31/2023	Will be accepting donations of long sleeve shirts and bandanas for farmworkers. Will distribute to migrant center families.
Yolo County Migrant Center	April 2023	Provide welcome baskets to occupants with basic home necessities and support through out their stay at the Migrant Center
1st Annual Dia del Campesino	8/26/2023	A day to celebrate our county farmworkers and provide music, food and resources.
Puentes Network Health Fair	9/16/2023	Health Fair
1st Spanish Digital Literacy Classes	Winter	Host a series of workshops for farmworkers to learn new skills and technology awareness
Winter Coat and Blanket Drive	Winter	Will host a drive to collect coats and blankets for our farmworkers.

# Questions

## Contact Information



530-702-1790



rodrigo.lopez@yolocounty.org



[www.yoloworks.org](http://www.yoloworks.org)



25 N. Cottonwood Street  
Woodland, CA 959695

