

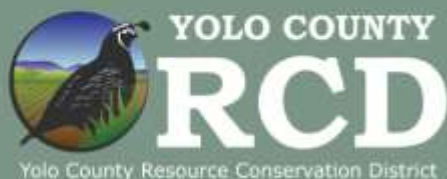


**YOLO COUNTY
COMMUNITY WILDFIRE
PROTECTION PLAN**

DRAFT

January 2023

Prepared by:



Thank you to the people who worked together to build the Yolo County CWPP:

CWPP Steering Committee Members

Art Mendoza, Assistant Captain, Winters Fire Department
Bill Weisgerber, East Davis County Fire Protection District
Ben Sitter, Deputy Chief of Camps, CAL FIRE
Damen Snow, Fire Marshall, Yocha Dehe Fire Department
Dash Weidhofer, Ranch Manager, Audubon California
Heather Nichols, Executive Director, Yolo County Resource Conservation District
Kurt Johnson, Emergency Services Planner, County of Yolo-Office of Emergency Services
Miguel Watson, Battalion Chief, Sonoma-Lake-Napa Unit CAL FIRE
Neal Van Alfen, Community Member, Golden Bear Estates
Rebecca Ramirez, Fire Chief, Yocha Dehe Fire Department (retired)
Tom Knecht, Staff Chief, Command and Control, CAL FIRE
Tracy Katelman, Registered Professional Forester, ForEverGreen Forestry

The participating members of the Yolo County Fire Safe Council

YCFSC Chair, 2021-2022: Rebecca Ramirez, Fire Chief, Yocha Dehe Fire Department
YCFSC Vice Chair, 2021-2022: Brad Lopez, Fire Chief, Winters Fire Department (now Suisun FD)
YCFSC Vice Chair, 2022-present: Jonathan Flora, Capay Valley Emergency Auxiliary Response & FSC

The committed volunteer leaders of the Community Fire Safe Councils in Yolo County

Capay Valley Emergency Response Auxiliary & Fire Safe Council
West Winters Fire Safe Council

Carol Rice, Wildland Res Mgt
Dana Carey, former Director of the Yolo County Office of Emergency Services
Esther Mandeno, Digital Mapping Solutions
Kristin Weivoda, Director of the Yolo County Office of Emergency Services
Tracy Katelman, ForEverGreen Forestry

Yolo County Resource Conservation District staff:

Alli Permann, Outreach Coordinator
Heather Nichols, Executive Director
Kate Reza, Program Manager
Tanya Meyer, Senior Program Manager

About this document

This document was written by Yolo County Resource Conservation District staff, who coordinate the Yolo County Fire Safe Council through a Memorandum of Understanding with the County of Yolo. This document has been guided by, edited and commented on by the CWPP Steering Committee which is composed of a group of citizens, fire officials and Yolo County Office of Emergency Services and Yolo County RCD staff. The Yolo County Community Wildfire Protection Plan (CWPP) and the Yolo County Fire Safe Council started in 2021. The YCFSC provides education and outreach, and support to community Fire Safe Councils in Yolo County. This project is funded through a Fire Prevention Program Grant from the California Department of Forestry and Fire Protection (CAL FIRE).



This grant program and publications are funded in full by the California Department of Forestry and Fire Protection (CAL FIRE) as part of the California Climate Investments Program.



Table of Contents

List of Acronyms.....	iii
SIGNATURE PAGE	iv
EXECUTIVE SUMMARY	5
PREFACE	5
OVERVIEW: Existing Conditions in Yolo County	6
Landscape	6
Geography and Land Use	6
Community Characteristics	7
Access	9
Critical Infrastructure	9
Summary of Quantitative Wildfire Risk Assessment (QWRA)	11
Assets and Values at Risk	11
Privately Managed Lands	15
Weather and Climate Change	15
Regional Fire History	16
Notable Yolo County Fires	18
The Wildland Urban Interface and Community Base Map	19
Fire Zones and Firefighting Resources	20
COLLABORATION and PLANNING PROCESS	25
Key Partners	25
The CWWP and the Multijurisdictional Local Government Hazard Mitigation Plan (HMP)	28
The CWPP Planning Process	28
ACTION PLAN: COMMUNITY EDUCATION AND ENGAGEMENT	28
Priorities	28
Completed Projects and Maintenance Priorities	28
Future Projects	29
Resources	29
ACTION PLAN: DEFENSIBLE SPACE AND HOME HARDENING	29
Priorities	29
Completed Projects and Maintenance Priorities	30
Future Projects	30
Resources	30

ACTION PLAN: EVACUATION AND ACCESS PLANNING	31
Priorities	31
Completed Projects and Maintenance Priorities	32
Future Projects	32
Resources	32
ACTION PLAN: HAZARDOUS FUELS MANAGEMENT	32
Priorities	32
Completed Projects and Maintenance Priorities	33
Future Projects	34
Resources	34
APPENDICES	36
Yolo County Fire Safe Council Members, January 2023	36
List of Meetings for Community Input	37
The Complete Yolo County CWPP Project List	42
TABLE 2: Recent Yolo County Fire History from: CAL FIRE’s Fire and Resource Assessment Program (FRAP), 2020	61
Fire-Related Planning Resources	62

List of Figures and Tables in Document

<u>Figure 1: Yolo County Vegetation (map)</u>	8
<u>Figure 2: Critical Infrastructure (map)</u>	10
<u>Figure 3: Wildfire Risk Assessment (QWRA) (map)</u>	12
<u>Figure 4: Public Ownership in Yolo County (map)</u>	14
<u>Figure 5: Fire History (map)</u>	17
<u>Figure 6: Yolo County Community Base Map Page (photo)</u>	19
<u>Figure 7: 2007 Fire Hazard Severity Zone (map)</u>	21
<u>Figure 8: Fire Fighting Responsibility Areas (map)</u>	23
<u>Table 1: Yolo County Fire Agencies</u>	24

List of Acronyms

BLM	Bureau of Land Management
CAL FIRE	California Department of Forestry and Fire Protection
CAL FIRE LNU	California Department of Forestry and Fire Protection Sonoma-Lake-Napa Unit
CCC	California Conservation Corps
CEQA	California Environmental Quality Act
CVERA	Capay Valley Emergency Response Auxiliary
CVERA & FSC	Capay Valley Emergency Response Auxiliary & Fire Safe Council
CVFPD	Capay Valley Fire Protection District
CWPP	Community Wildfire Protection Plan
FD	Fire Department
FHSZ	Fire Hazard Severity Zone
FPD	Fire Protection District
FSC	Fire Safe Council
HMP	Hazard Mitigation Plan
HRFA	Healthy Soils Restoration Act of 2003
LAFCo	Local Agency Formation Commission
LiDAR	Light Detection and Ranging
LRA	Local Responsibility Area
MSR	Municipal Service Review
NGOs	Non-governmental organizations
NOE	Notice of Exemption
OES	Office of Emergency Services
PBA	Prescribed Burn Association
QWRA	Yolo County Quantitative Wildfire Risk Assessment
SRA	State Responsibility Area
VHFSZ	Very High Fire Hazard Severity Zone
WUI	Wildland Urban Interface
YCFCWCD	Yolo County Flood Control and Water Conservation District
YCFSC	Yolo County Fire Safe Council
YCGP	Yolo County General Plan
YCOES	Yolo County Office of Emergency Services
YCRCD	Yolo County Resource Conservation District
YDFD	Yocha Dehe Fire Department

SIGNATURE PAGE

Please note: this is not a legally binding document. It is to be used for planning only.

The Yolo County Community Wildfire Protection plan was developed in accordance with the Healthy Forests Restoration Act. The plan was developed collaboratively amount partners, including Tribal, local and state governments, public and private agencies, local fire protection districts and community members. The plan includes a list of projects and provides educational resources for community members to use to reduce the risk of structural ignitability and hazardous fuels.

The undersigned have reviewed the Yolo County CWPP and accept this document as the final document representing 2023.

Mike Marcucci
Unit Chief
Sonoma Lake Napa Unit, CAL FIRE

Date

NAME
Chairperson
Yolo County Firefighter Chief's Association

Date

NAME
Chairperson
Yolo County Board of Supervisors

Date

EXECUTIVE SUMMARY

Wildland fires have been a component of California’s natural history for thousands of years. Long before European, Russian, and Mexican explorers set foot on this land, Native People were tending the land using fire. In the past two hundred years, most wildfires were successfully suppressed, leading to the accumulation of more continuous and dense wildland fuels, which resulted in the dangerously over-vegetated condition of much of the state’s natural and working lands. Wildfires lead to the destruction of communities, contribute to climate change by releasing carbon, damage watersheds, and disrupt ecological functions such as pollination services and water quality.

Wildland fire danger varies throughout Yolo County. The County is characterized by relatively level, valley floor landscapes to the south and east consisting mainly of agricultural crops, grasslands, and some grass/shrub lands. This lack of complex fuels and flat topography leads to almost no fires on the valley floor. However, in the hilly landscapes in the Inner Coast Range, the rugged topography and thick vegetation of oak woodlands, grass and shrub lands, shrub lands, forest with understory, and dense hardwood/conifer forest, create a landscape where fires can spread rapidly upslope and access for suppression equipment is limited.

A Community Wildfire Protection Plan (CWPP) is a collaborative plan developed to help communities reduce wildfire risk and create fire-adapted communities. All CWPPs are required by the Federal Healthy Forest Restoration Act (HFRA, 2003) to identify and prioritize fuel reduction opportunities, address structural ignitability and collaborate with relevant partners.

Projects in the Yolo County CWPP were identified by the community and designed to address local conditions, values, and priorities related to wildfire risk reduction and community resilience. The Yolo County CWPP includes an action plan with five project types of current, ongoing and future efforts. The five sections of the action plan include: 1.) Community education and outreach; 2.) Defensible space and home hardening; 3.) Hazardous fuel management; 4.) Evacuation and access planning; and 5.) Other mitigation and preparedness.

PREFACE

The Federal Healthy Forest Restoration Act (HFRA, 2003) encourages communities in the Wildland Urban Interface to create Community Wildfire Protection Plans (CWPPs). Please note: For the purposes of this CWPP, a Wildland Urban Interface (WUI) is defined as: any populated area that falls within high severity fire hazard areas; see page 14 for more information. CWPPs are blueprints for preparedness and planning; they provide a framework for communities to clarify, refine, and establish priorities for protection of life, natural resources, property, and critical infrastructure. A CWPP empowers citizens to move in a cohesive, collaborative direction towards wildfire and emergency prevention and preparedness.

This CWPP provides an analysis of wildfire hazards and risks in unincorporated areas of Yolo County, California (incorporated towns and cities have fire regulations, which are enforced by fire marshals). The plan follows the standards for CWPPs established by the HFRA including:

1. Identifying and prioritizing fuel reduction opportunities throughout the County of Yolo
2. Addressing structural ignitability
3. Collaborating with relevant partners

Land Acknowledgement

The area now known as Yolo County was tended for thousands of years by the Patwin people, who used fire to improve hunting grounds as well as food and fiber gathering sites. The Yocha Dehe Wintun Nation remains committed to stewarding this land and is a key partner in the Yolo County Fire Safe Council.

OVERVIEW: Existing Conditions in Yolo County

Landscape

Yolo County's landscape is largely pastoral; the Coast Range comprises its western edge and drains east and south to the Sacramento River, which forms its eastern edge. The principal watersheds in the county are the Sacramento River, Cache Creek, Willow Slough, and Putah Creek, all of which are highly managed for flood control and agricultural irrigation.

Geography and Land Use

Yolo County comprises approximately 655,360 acres (1,024 square miles). The eastern and southern portions of the County are located on the relatively level valley floor. The north-central part of the county encompasses the Dunnigan Hills, and the western portion rises into the Blue Ridge and Rocky Ridge of the Inner North Coast Range. Elevations range from slightly above sea level in the southeastern corner of the county to more than 3,000 feet on the west side. About seventy percent of the county consists of gently sloping to level alluvial areas located in the Great Valley geomorphic province and the remaining thirty percent is located in the Coast Ranges, consisting of moderately sloping to very steep uplands and terraces. This region has a recent history of recurrent wildfire; for example, Bobcat Ranch in the Putah Creek Canyon experienced fires every summer from 2013 to 2018 and burned again during the LNU fire in 2020.¹ In fact, this property has the highest fire return interval (time between fires in a designated area) in California.²

The major north-south oriented ridge that conveys wildfire is the Blue Ridge, running from the Vacaville Hills at Interstate 80 in Solano County, north to Rumsey Canyon and onto Walker Ridge. (*Please note:* There is a proposal for the federal government to change the name “Walker Ridge” back to its original name: Molok Luyuk.) The Blue Ridge is divided by the Berryessa Gap, a canyon created by Putah Creek, which flows east into the Valley. This canyon is a naturally occurring wind tunnel, pulling or pushing fire events up or down the canyon as the air temperature changes on the valley floor. The Cortina Ridge starts on the east side of the Rumsey Canyon and heads north into Colusa County. Capay Valley, along with Bear Valley to the north, are wide valleys that provide the opportunity for wind to be funneled even under local wind conditions; this situation is compounded during critical weather conditions. Farmlands, ranches, rural and major roads and other human-made features are scattered throughout this landscape.

Land use across Yolo County is mixed and includes agricultural crops, livestock grazing, orchards and vineyards, public open space, rural residential, residential, industrial, and commercial uses. Agriculture comprises over eighty five percent of county land use; it has been integral to the economy and culture

¹ Tribolet, Aidan, Sydney Firorentino and Sophia Pilliteri. 2020. Wildfires and the Blue Oak Woodlands at Bobcat Ranch. Audubon Conversation. Web page. Available: <https://richardsonbay.audubon.org/news/wildfires-and-blue-oak-woodlands-bobcat-ranch>.

² <https://mhoshovsky.wordpress.com/2023/01/27/what-areas-have-burned-the-most-times-in-california/>

since the County's incorporation in 1850 (County of Yolo, 2005. Background Report for the Yolo County General Plan Update, Woodland, California, page 1-7). The largest agricultural land use category is cultivated cropland followed by livestock grazing. Other important land uses are public open space followed by orchards and vineyards (distinct from cultivated agriculture).

A vegetation map (Figure 1) with land use information is available on the CWPP hub site. To view the map in detail via an online, interactive map, click here:

<https://ycrcd3.maps.arcgis.com/apps/MapSeries/index.html?appid=cfff4d77bcfa4399acfc13f6aede406&entry=4>

Non-agricultural rural residential development is the largest residential land use in unincorporated Yolo County. The Wildland Urban Interface (WUI) refers to areas where homes are built near or within lands prone to wildfire. Much of the County's rural residential land is in the WUI, especially along the western edge. Only four percent of Yolo County lands are within the jurisdictional boundaries of its cities; the majority of the population resides in these cities.

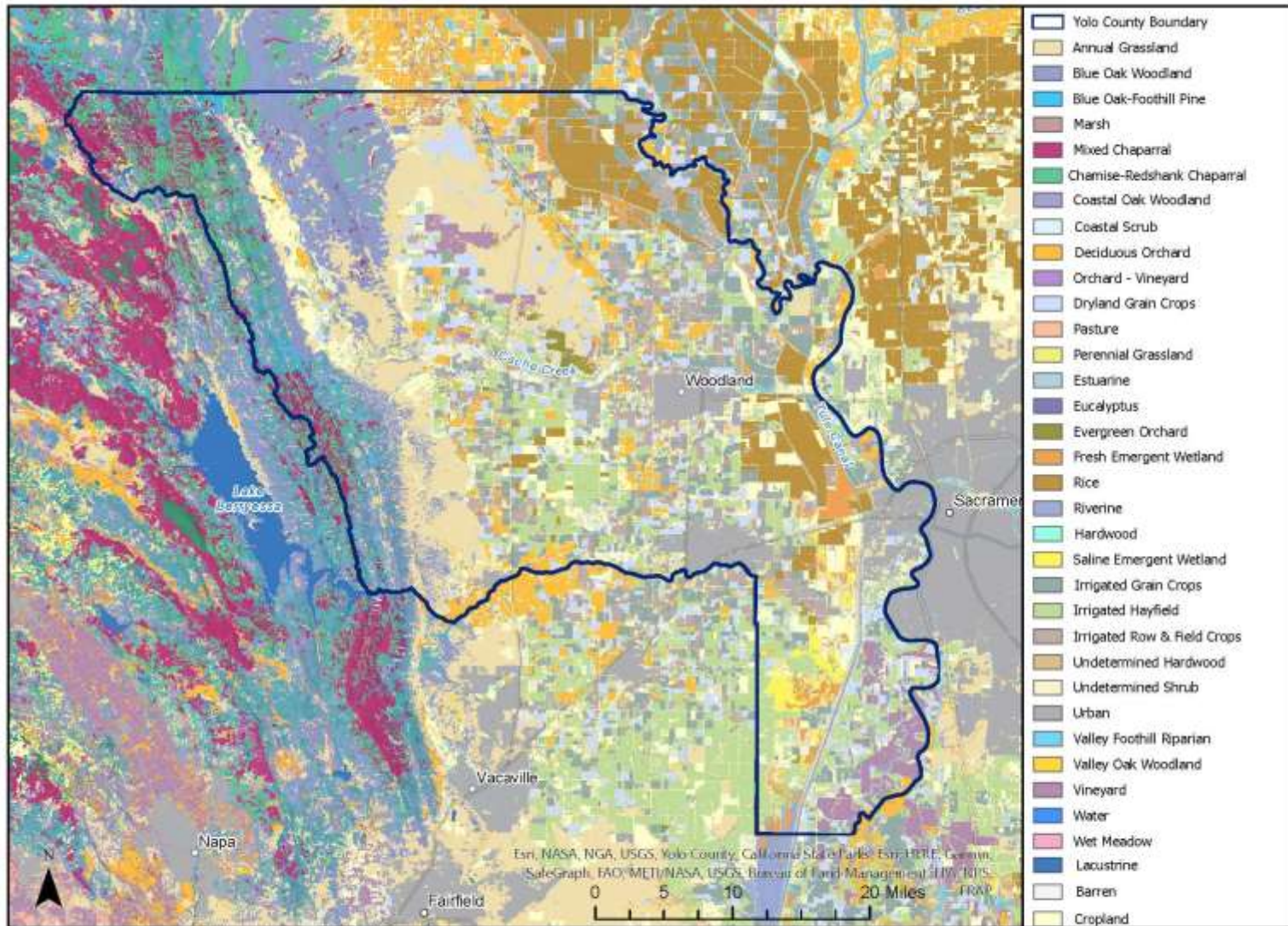
Community Characteristics

Yolo County's population was estimated to be 217,500 in 2021. It is a primarily rural county with four incorporated cities: Davis, West Sacramento, Woodland, and Winters (which is also partially located in Solano County, although this part of town is unincorporated). Yolo County houses the University of California Davis, which has a strong agricultural focus and brings in students from diverse backgrounds and locations. The cities are concentrated in the eastern and southern part of the county while the northwestern part of the county is predominantly agricultural. Many of the farming families have worked in agriculture for several generations. The Yocha Dehe Wintun Nation, a federally recognized Tribal government, has been stewarding the land in the Capay Valley for thousands of years and currently runs one of the most diverse farming operations in the county.

The County's General Plan is strongly focused on protecting agricultural and open space resources, commodities and identity, resisting urbanization, and directing growth into existing incorporated cities and towns. Over 85 percent of the county remains in farmland and open space despite intense development pressure from the nearby Sacramento and Bay Area metropolitan areas. Through 2030, the County plans modest growth within some existing unincorporated communities with an emphasis on community and neighborhood design requirements that reflect "smart growth" principles.

In the 2030 Yolo Countywide General Plan (YCGP) (2018), Dunnigan, Madison, Monument Hills, Yolo, and Zamora have been targeted for future commercial sites and Esparto, Madison, and unspecified unincorporated areas in the county have been identified for new residential units. Policy LU-3.7 in the YCGP specifies that new urban development is prohibited in areas where there are significant hazards such as fire hazard areas that lack plans to mitigate the risk. Policy LU-3.8 further specifies that any residences allowed in agricultural areas are intended to "provide dwellings for those directly involved in on-site farming activity, including farm employees, the landowners and their immediate families" and such dwellings are encouraged to be on land least suited for agriculture and/or clustered to minimize

Figure 1: Yolo County Vegetation Map



Yolo County Vegetation Map

conversion.³ Existing homes in the WUI, which are generally much older than newer developments, tend to lack fire-wise features now standard in much of California. These residences make up the majority of homes in the high-severity fire zones in the northwestern portion of the county, where resident egress and emergency vehicle access is often difficult.

Access

Yolo County contains portions of several interstate and state highways which are important for transporting agricultural products and commuter traffic. These routes are located mainly in the east, central, and southern portions of the county with the exception of Highway 16, which runs north-south in the northwest quadrant through the Capay Valley. Highway 128 to Lake Berryessa is heavily trafficked, especially on weekends, and is a major ignition zone.

Critical Infrastructure

Yolo County Quantitative Wildfire Risk Assessment Report (QWRA)⁴ states that critical infrastructure in the county includes communication towers, electric substations and power plants, transmission and power lines, oil and gas pipelines, communication sites, and community identified infrastructure such as ranch fences and gates. An interactive map can be found at the link below.

Critical Infrastructure map:

<https://ycrcd3.maps.arcgis.com/apps/MapSeries/index.html?appid=cfff4d77bcfa4399acfc13f6aede406&entry=9>



Photo 1: Volunteer Firefighters from the Capay Valley Fire Protection District map local critical infrastructure, hazards and priority projects for the CWPP in 2021.

³ County of Yolo. 2018. 2030 Countywide General Plan, Land Use and Community Character Element, Goal LU-3.

⁴ Mandeno, P.E., and Rice, C. 2021. Yolo County Quantitative Wildfire Risk Assessment: Methods and Results. Yolo Co. Living with Wildfire Hub site. ***<https://yolo-wildfire-1-ycrcd3.hub.arcgis.com/documents/4226d6df6ed64ffca60882eff4a550d7/explore>

Summary of Quantitative Wildfire Risk Assessment (QWRA)

The 2021 Yolo County Quantitative Wildfire Risk Assessment provides a data-driven analysis of wildfire hazard risks to key infrastructure and assets in Yolo County.

The QWRA and an interactive web map showing the results of the QWRA are available at Yolo County Quantitative Wildfire Risk Assessment Report | Yolo County Living with Wildfire: <https://arcg.is/1Lqani1>

Using a landscape simulation model that accounts for weather and fuel moisture, the QWRA provides fire behavior mapping and analyses that determine where wildfires are most likely to occur, their severity, and assets and resources at risk from wildfire.

The results of the QWRA show that many of the threats from wildfire occur in the western part of the county on the Napa and Solano County borders along the Blue Ridge mountains and slopes. There are also pockets of moderate to high threat in the county interior, including east of Capay Valley, west of and surrounding the town of Winters, and along the Dunnigan Hills west of Interstate 5. There are also some areas of high fire risk in the southern part of the county south of Interstate 80.

Assets and Values at Risk

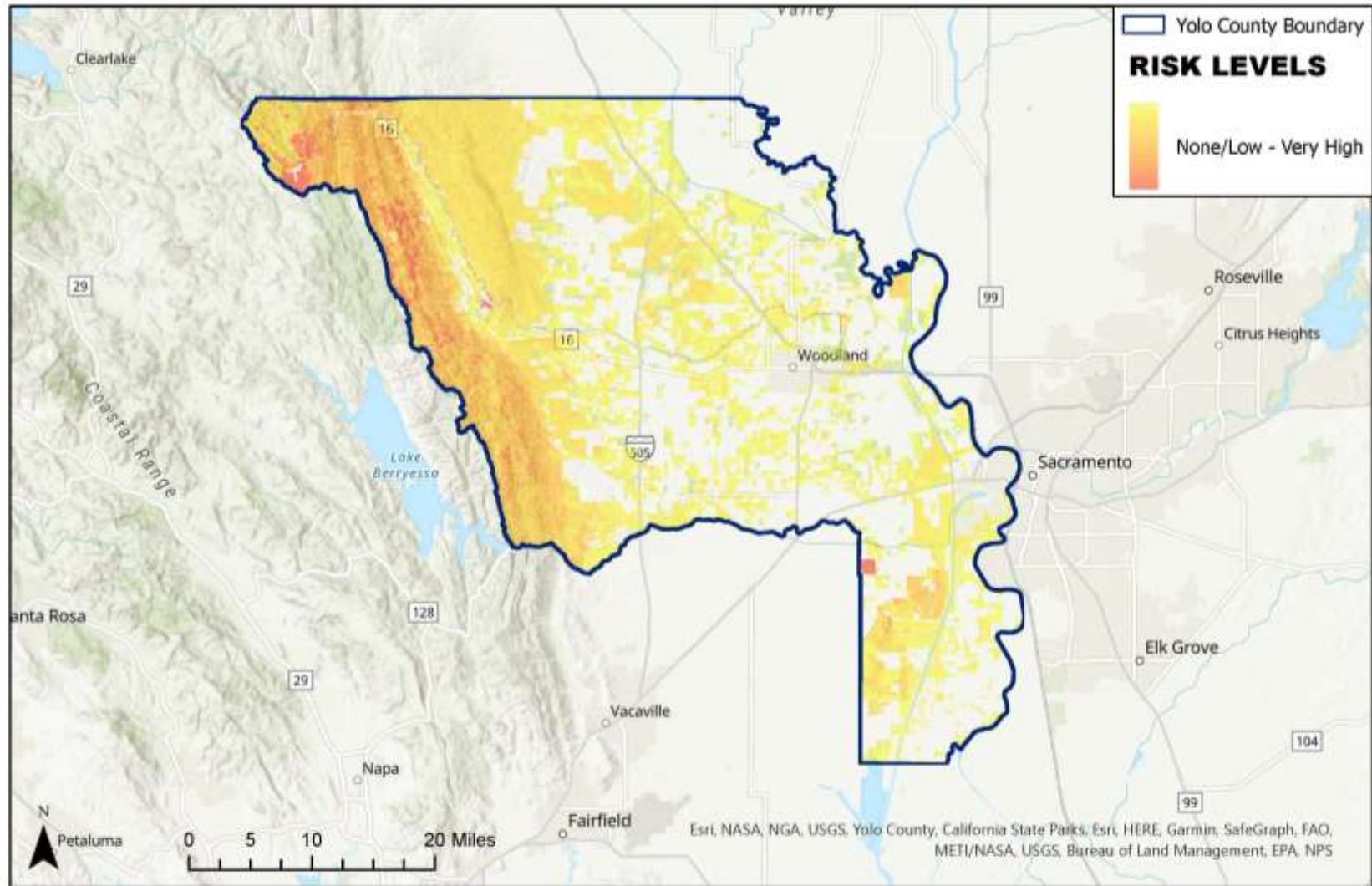
Important resources identified in the QWRA include air quality, communities and housing, ecosystem function, surface drinking water, priority vegetation, rangeland, recreational facilities including non-governmental organizations (NGO) lands and campgrounds, and wildlife habitat. These assets were identified and prioritized by the Yolo County Fire Safe Council Steering Committee, with high relative importance assigned to infrastructure and human communities and less relative importance assigned to natural resources.

Assets and Values at Risk interactive map: <https://arcg.is/ziPHH>



Photo 2: Members of the Yolo County CWPP Steering Committee start the maps for the Wildfire Risk Assessment map, 2021

Figure 3: Wildfire Risk Assessment (QWRA) Map



Wildfire Risk Assessment

Public Lands

Public lands—land owned by the local, state or federal agencies-- in Yolo County include large tracts of land, which are managed in many different ways for specific goals. These goals may or may not include planning for wildfire, which underscores the importance of multi-partner collaboration in fire prevention and preparedness planning and project implementation. The YCFSC has solicited participation from a wide range of partners in this process including federal and state agencies such as the University of California, Davis; the California Department of Fish and Wildlife, and the federal Bureau of Land Management, all of which own and/or manage property in Yolo County. The federal government (Bureau of Land Management) owns 23,774 acres and the State of California (California Department of Fish and Wildlife and UC Davis) owns 12,328 acres of unincorporated Yolo County land.

Large public lands have resource and fire management plans. Links to these plans can be found in the Appendix Resource Table. The UC Davis Fire Department is also writing a CWPP; information will be added from that document when it is completed in 2023.

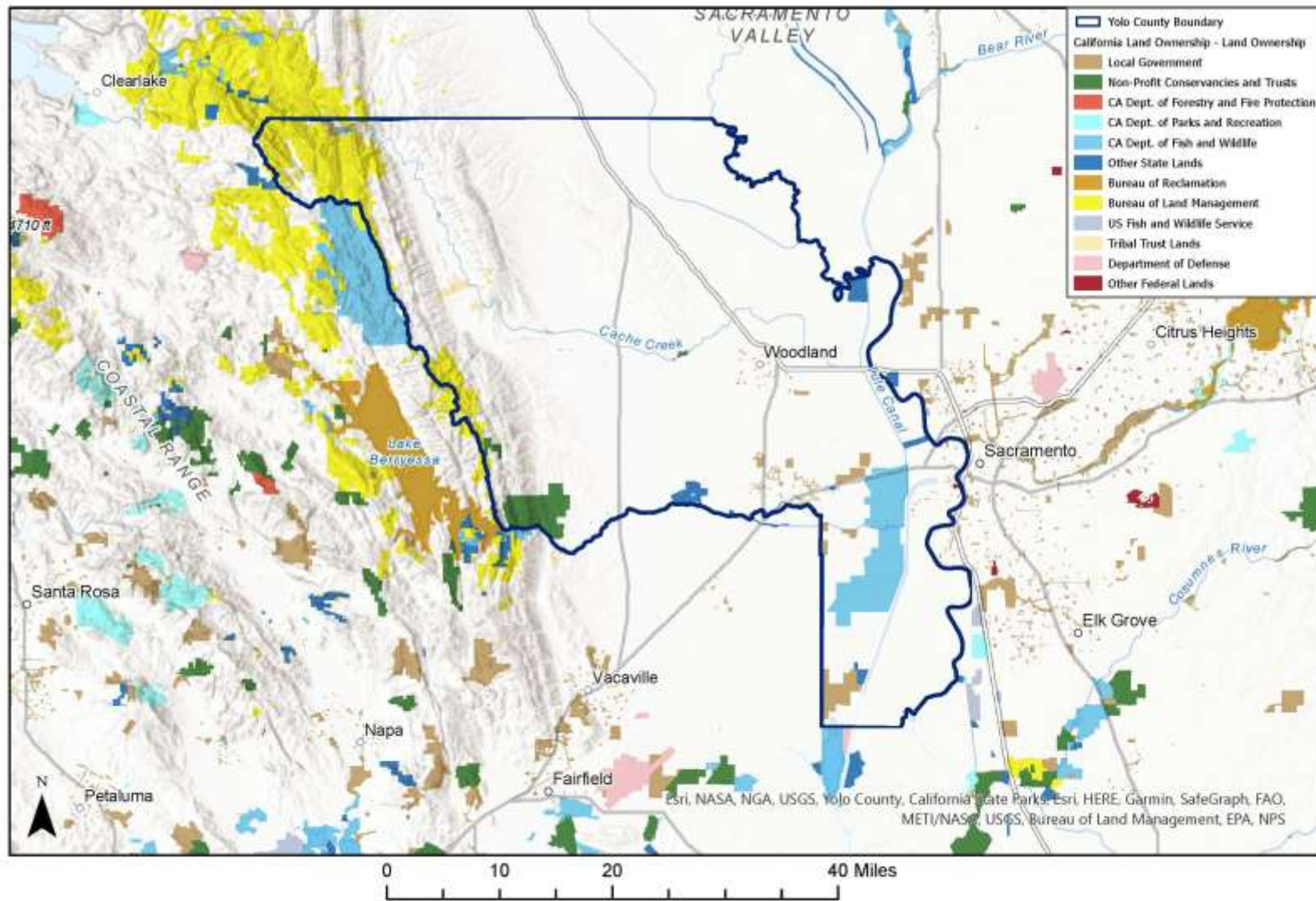
To see an interactive map of public ownership in Yolo County, follow this link.

<https://ycrcd3.maps.arcgis.com/apps/MapSeries/index.html?appid=cfff4d77bcfa4399acfc13f6aede406&entry=5>



Photo 3: The chipper crew works on private property in high fire areas in Yolo County. The chipper was purchased with Early Action funding in 2022 and the crew members are from the Yolo County Flood Control and Water Conservation District

Figure 4: Public Ownership



Public Ownership

Privately Managed Lands

Most of the land in the High Fire Hazard Severity Zone is private and is primarily managed for grazing. Private recreational lands include hunting clubs and other passive and active recreational facilities. Private working lands include lands in agriculture: farmland and grazing land. Some of the rangelands form a north-south “graze-break,” which acts as a modified fuel break depending on the rangeland management. There are several large properties that are managed for conservation, including Audubon California’s Bobcat Ranch west of Winters, which experienced fires each summer for five years from 2013 to 2018, and then again in 2020. The link to the resource management plan for this property is in the appendix.

Vegetation, Fuels and Fire Behavior

Wildland fire danger varies throughout Yolo County. As discussed, the County is characterized by relatively level, valley floor landscapes to the south and east consisting mainly of agricultural crops, grasslands, and some grass/shrub lands. This lack of topography and complex fuels leads to very little severe fire behavior on the valley floor. However, in the hilly landscapes in the Inner Coast range, the rugged topography consists of oak woodlands, grass and shrub lands, shrub lands, forest with understory, and dense hardwood/conifer (live oak and foothill pine) forest, creating a landscape where fires can spread rapidly upslope and access for suppression equipment is limited.

Aggressive long-term fire suppression tactics and lack of consistent wildland fuels management in this area have led to vertical and horizontal continuity of hazardous fuels that promote rapid fire growth. Event-specific fire suppression tactics are hindered in these conditions, with critical concerns when chaparral dead-to-live ratio exceeds fifty percent and live fuel moisture approaches sixty percent in late summer and early fall. Yolo County experiences a large number of vegetation fires, usually during summer and fall months. Fires tend to occur along major highways and railroads and usually do not damage structures although they are often threatened. Aggressive firefighting has minimized the destruction of accessible defensible, high value structures. On the southwest side of the county near Winters, losses occur more frequently. Conditions can be exacerbated by hot north winds during periods of extremely low humidity. Fires not contained in the initial attack phase rapidly develop into major incidents taking multiple days to control with extended resource commitments and threats to life and property. The rare fire that does progress into an extended attack incident poses significant impact to residents, agriculture and commerce throughout the region and into surrounding counties. These extended attack fires quickly over-extend local resources, requiring mutual aid assistance from throughout the region and State.

Weather and Climate Change

Yolo County’s climate has historically been characterized by warm, dry summers and cool, wet winters. Average temperatures historically ranged from lows in the 30s and 40s F in December to an average high of 95° F in July. Historic annual rainfall ranged from 16 inches on the valley floor to 30 inches at the crest of the western hill region; land at the base of the hills is in a rain shadow and receives an average of 16” or less. Precipitation mainly occurs as storm fronts, with over eighty five percent of these occurring between November and March.

As the climate changes, the county is experiencing longer and drier summer conditions with higher seasonal average temperatures in both the summer and winter. The 12-month average temperature

increased 1.9°F from September 1900 to August 2022,⁵ leading to wildfires of greater frequency, larger size, and longer duration. The hotter weather may also increase lightning incidence, which can cause wildfires. Increased drought conditions provide greater opportunities for human-caused ignitions, whether by accident or arson. Critical fire weather occurs during hot (or warm) and dry periods coupled with a north wind or cold front passage, which suppresses the normal diurnal weather variation.

Regional Fire History

Since 1950, there have been approximately 85 fires greater than 100 acres in the county. Most of these fires have occurred in the western third of the county. The largest fire to date was the Hennessy Fire, which was part of the LNU Lighting Complex in 2020. It originated outside of the county and burned a total of 334,000 acres, 75,662 of which were in Yolo County. There are three major fires on record known to have been caused by natural ignition (lightning); the causes of the remainder were either human ignition (arson, improper equipment use, powerline issues, escaped camp fires, fireworks) or of unknown origin.

A map of the county’s fire history up to the year 2020 can be viewed here:

<https://ycrcd3.maps.arcgis.com/apps/MapSeries/index.html?appid=cfff4d77bcfa4399acfc13f6aede406&entry=8>

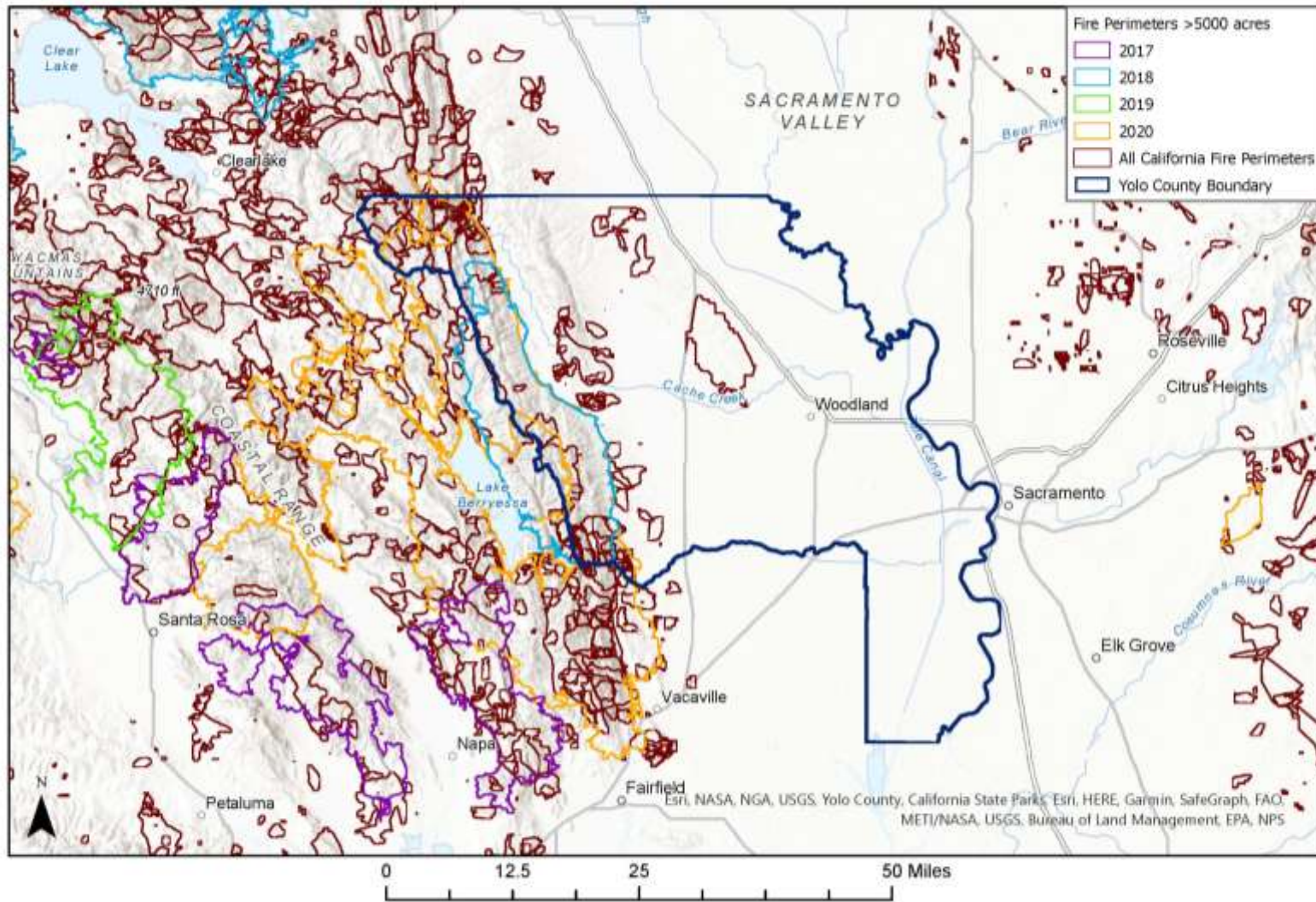
Below is a history of significant wildfires in Yolo County since 2015, when fires in the area started becoming larger, moving faster and damaging more structures. The full table of all Yolo County fires is in the Appendix.



Photo 4: Flames of the Rumsey Fire in 2004 burn through a grove of trees.

⁵ USAFacts. 2022. Climate in Yolo County, California. Web page. Available: <https://usafacts.org/issues/climate/state/california/county/yolo-county>

Figure 5: Fire History



Fire History

Notable Yolo County Fires

from 2018 Yolo Multijurisdictional Hazard Mitigation Plan (HMP) December 2018

<https://www.yolocounty.org/home/showpublisheddocument/55805/636796131647430000>

Monticello Fire 07/04-07/12/2014: The Monticello Fire was started by fireworks on the southeast shore of Lake Berryessa and burned 6,488 acres before it was fully contained. Five firefighters suffered minor injuries, including heat exhaustion, while fighting the blaze. Erratic wind shifts led to extreme fire behavior during the first few days of the fire, prompting evacuation orders for 40 homes in Golden Bear Estates near Winters. No structures were lost in the fire.

Wragg Fire 07/22-08/05/2015: The Wragg Fire was started by an idling car on State Route 128 near Lake Berryessa. The fire burned 8,051 acres and destroyed two buildings. Parts of Interstate 505 in Yolo County were closed during the fire. Mandatory evacuations were ordered for 136 homes, including Golden Bear Estates near Winters. No injuries were reported.

Rocky Fire 07/29-09/14/2015: The Rocky Fire was started by a faulty gas-powered water heater inside an outbuilding being used for an illegal marijuana grow in Lake County. The fire burned 69,438 acres in Yolo, Lake, and Colusa Counties and destroyed 43 homes and 53 outbuildings. Several hundred people were evacuated in Lake County, but no injuries were reported. Yolo County was considering evacuating the Capay Valley if the fire crested the Blue Ridge Mountains, but it did not. The Rocky Fire eventually merged with the Jerusalem Fire (see below).

Jerusalem Fire 08/09-08/25/2015: The Jerusalem Fire was human caused and burned 25,118 acres in Lake County on the outskirts of Yolo County before it merged with the Rocky Fire. The fire destroyed six homes and 21 outbuildings. Evacuations were ordered in Lake County, but no injuries were reported.

Cold Fire 08/02-08/11/2016 The Cold Fire was a human caused wildfire that burned 5,371 acres in Yolo County near Lake Berryessa (see Figure 51). The fire destroyed two buildings and caused an estimated \$100,000 in damage. The Cold Fire burned primarily in the footprint of the Monticello Fire. Mandatory evacuations were ordered for Canyon Creek Campground and Golden Bear Estates near Winters.

Winters Fire 07/06-07/11/2017: The Winters Fire was a human caused wildfire that burned roughly 2,300 acres in the Cold Fire footprint north of State Route 128. The fire did not damage any structures but one firefighter was injured and Golden Bear estates was evacuated for the fourth year in a row.

The County Fire 6/30-7/17/2018 started in the community of Guinda, and was contained after burning 90,288 acres (141 sq mi; 365 km²). The fire caused mandatory evacuations along Highway 128, County Road 23, and areas around Lake Berryessa, including Monticello Dam and Golden Bear Estates near Winters. The fire destroyed 20 structures, damaged three, and caused one injury. The fire was started by an improperly installed electric fence for livestock.

Sand Fire 6/8/2019-6/15/2019 The fire started on County Road 41 and Highway 16 and burned 2,512 acres (1,017 ha) as well as seven structures. The cause of the fire remains under investigation. The fire immediately made an aggressive burn towards the community of Rumsey, prompting mandatory evacuations of more than 300 residents living along Highway 16. The fire spread rapidly due to high winds and dry weather conditions during the red flag warning posted in the area. Additionally, two first responders suffered minor injuries.

The LNU Lightning Complex fires 8/17-10/2/2020 were a large complex of wildfires that burned in Lake, Napa, Sonoma, Solano, and Yolo Counties. Mandatory evacuation orders were issued in Yolo County for the Capay Valley and Golden Bear Estates near Winters. The complex was composed of numerous lightning-sparked fires, most of which were small. While they ignited separately from each other, the Hennessey Fire eventually grew to merge with the Gamble, Green, Markley, Spanish, and Morgan Fires for a total burn area of 363,220 acres (1,470 km²). The fire, which burned in the hills surrounding as Fairfield, Napa, and Vacaville, destroyed 1,491 structures and damaged a further 232. Six people were killed and another five injured. The LNU Lightning Complex is the sixth-largest wildfire in the recorded history of California. (Citation needed)

Fremont Weir 5/20-5/21/2021 this 1,800-acre fire in the Fremont Weir near Knights Landing was notable because this area does not usually experience wildfires. Ignition cause is unknown.

The Wildland Urban Interface and Community Base Map

For the purposes of this CWPP, a Wildland Urban Interface (WUI) is defined as: any populated area that falls within QWRA high severity fire hazard areas. This definition conforms to the Yolo County Hazard Mitigation Plan, in which the WUI “is defined as areas where homes are built near or among lands prone to wildfire.” It is also consistent with CAL FIRE’s Sonoma-Lake-Napa Unit 2021 Strategic Fire Plan, which defines the WUI as the “line, area, or zone where structures and other human development meet or intermingle with undeveloped wildland or vegetative fuels.”

There are several Yolo County communities in the WUI that are highly vulnerable to wildfire; these often have limited egress and elderly or disabled residents living alone, including the Capay Valley towns of Rumsey, Guinda, Brooks and Capay, as well as Positas Road and Golden Bear Estates west of Winters, which have been evacuated six times since 2012. The western edge of the City of Winters is also near the WUI.

A link to the community base map and its many tabs is here, and the page looks like this:
<https://yolo-wildfire-1-ycrcd3.hub.arcgis.com/apps/cff4d77bcfa4399acfc13f6aedea406/explore>

Figure 6: Yolo County Community Base Map page



Photo 5: The cover page for the Yolo Community Base Map that can be found on the Yolo Living with Wildfire site

Fire Zones and Firefighting Resources

To quantify the potential risk from wildland fires, the California Department of Forestry and Fire Protection (CAL FIRE) developed a Fire Hazard Severity Zone (FHSZ) scale that uses three criteria to evaluate and designate potential fire hazards in wildland areas. The criteria are fuel loading (vegetation), fire weather (winds, temperatures, humidity levels and fuel moisture contents) and topography (degree of slope). According to CAL FIRE maps for Yolo County, the western portion of the county, west of Esparto and Winters, is designated as a Very High Fire Severity Zone (VHFSZ).

Please note that CAL FIRE has updated the 2007 FHSZ map using new technologies and new information on land use changes, recent fire history and new science on local climate data.

This interactive map viewer allows users to compare the 2007 maps with the 2022 maps using a swipe tool:

<https://calfire-forestry.maps.arcgis.com/apps/webappviewer/index.html?id=fd937aba2b044c3484a642ae03c35677>

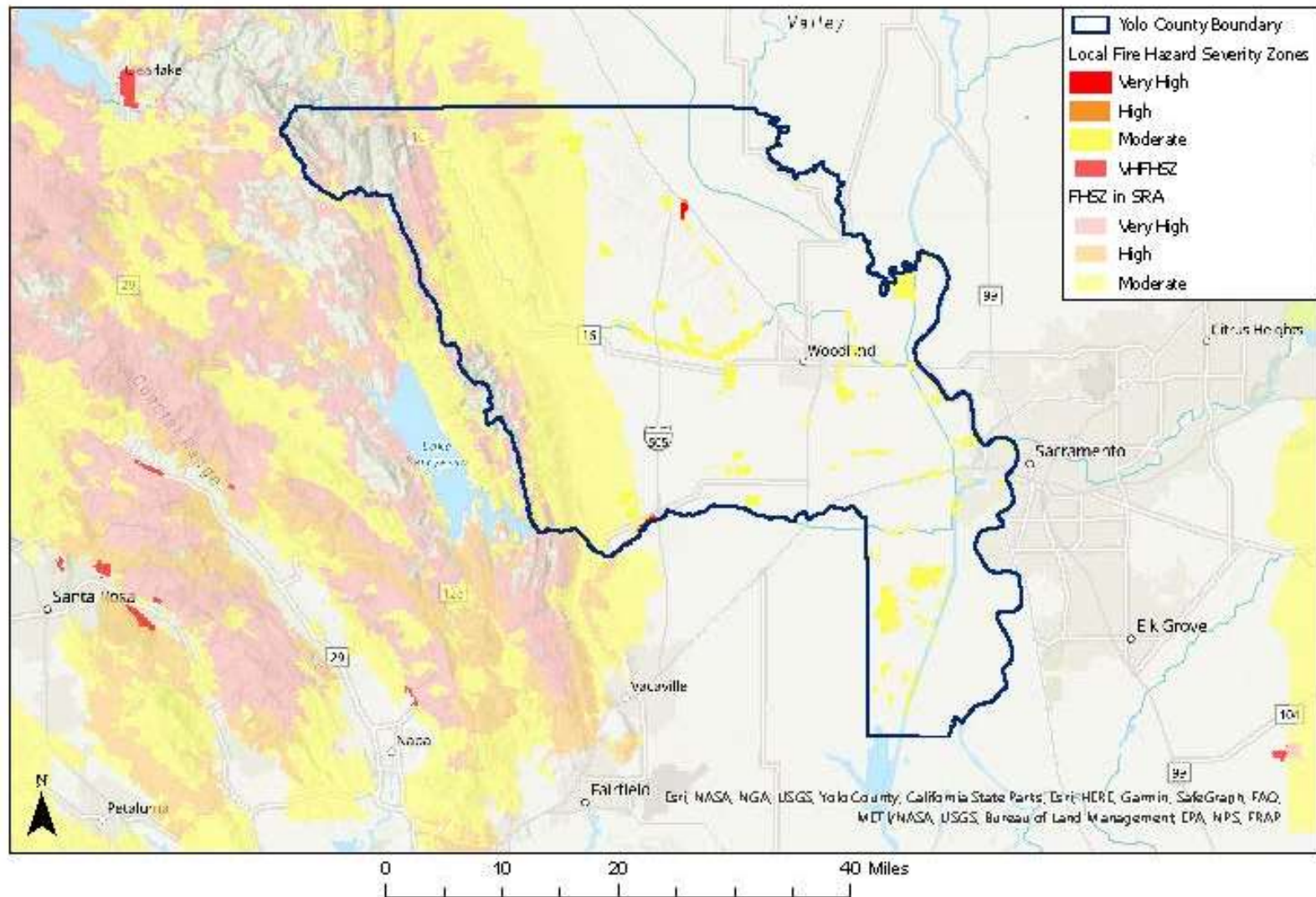
The 2007 FHSZ map can be seen on the Yolo County Living with Wildfire Hub site:

<https://ycrcd3.maps.arcgis.com/apps/MapSeries/index.html?appid=cfff4d77bcfa4399acfc13f6aede406&entry=7>



Photo 6: A drainage that was burned in the LNU Lightning Complex Fire, 2020.

Figure 7: Fire Hazard Severity Zone Map



Fire Hazard Severity Zones

CAL FIRE’s Very High Fire Severity Zone (VHFSZ) designation in Yolo County is in the State Responsibility Area (SRA), which means that fire suppression is the responsibility of CAL FIRE. Government Code Sections 51175 through 51189 require the State to identify and classify fire hazards and to designate VHFSZs in Local Responsibility Areas (LRAs), or areas where local agencies are responsible for fire suppression rather than the State. Since the VHFSZs in Yolo County are in an SRA rather than an LRA, they are not subject to the aforementioned Government Code.

There are two High Fire Hazard Zones (HFHZ) in LRAs in Yolo County. One is in the town of Dunnigan, where there are residences in an approximately 300-acre grove of highly flammable eucalyptus. The other is an approximately 100-acre eucalyptus grove north of Zamora.

The entire County is located within CAL FIRE’s Sonoma-Lake-Napa Unit (LNU), one of twenty-one CAL FIRE administrative units. The LNU consists of Sonoma, Lake, Napa, Yolo, Colusa, and Solano counties and ranks third of these 21 units in the average number of annual fires in the state. The LNU is divided into four divisions with ten field battalions; the East Division consists of Yolo, Solano, and Colusa Counties and has two battalions. Station 37 in Brooks is the CAL FIRE station in Yolo County.

For more information on the LNU, please see CAL FIRE’s 2021 LNU Strategic Fire Plan.

https://osfm.fire.ca.gov/media/lpaffiu/2021_lnu_fireplan.pdf

For a map of responsibility areas in Yolo County, please see the map on the hub site at this link:

<https://ycrcd3.maps.arcgis.com/apps/MapSeries/index.html?appid=cfff4d77bcfa4399acfc13f6aede406&entry=6>



Photo 7: CAL FIRE and the City of Winters Fire Department lead a Defensible Space Assessment Training hosted by Yolo County FSC, Green Valley FSC and Solano RCD in March 2022

Table 1: Yolo County Fire Agencies

Fire Departments	Address	Phone Number	Website
City of West Sacramento	2040 Lake Washington Blvd West Sacto, CA 95691	(916) 617-4600	https://www.cityofwestsacramento.org/government/departments/fire
Davis	530 Fifth Street Davis CA, 95616	(530) 757-5684	https://www.cityofdavis.org/city-hall/fire-department
Winters	700 Main Street Winters CA, 95694	(530) 795-4131	https://www.wintersfire.org/
Woodland	1000 Lincoln Avenue Woodland CA, 95695	(530) 661-5873	https://www.cityofwoodland.org/192/Woodland-Fire-Department
Yocha Dehe	14170 Golf Course Dr Brooks CA, 95606	(530) 796-3400	https://www.yochadehe.org/fire
UC Davis	625 Kleiber Hall Dr Davis CA, 95616	(530) 752-1236	https://fire.ucdavis.edu/
Fire Protection Districts			
Capay Valley	7447 Highway 16 Guinda, CA 95637	(530) 796-3300	https://cvfpd.specialdistrict.org/
Clarksburg	52902 Clarksburg Avenue Clarksburg CA, 95612	(916) 744-1700	https://clarksburgfire.specialdistrict.org/
Dunnigan	29145 Main Street Dunnigan CA, 95637	(530) 724-3515	https://dunniganfire.com/
East Davis	425 Mace Blvd Davis CA, 95618	(530) 757-5684	https://eastdaviscfpd.wordpress.com/
Elkhorn	19396 County Road 124 West Sacto CA, 95691	(530) 662-7367	
Esparto	16960 Yolo Avenue Esparto CA, 95627	(530) 787-3300	https://www.espartofire.org/
Knights Landing	42115 Sixth Street Knights Landing CA, 95645	(530) 735-6409	https://knightslandingfire.specialdistrict.org/
Madison	17880 Stephens Street Madison CA, 95653	(530) 662-5745	https://www.madison-fire.com/
No Man's Land	530 Fifth Street Davis CA, 95616	(530) 757 5684	
West Plainfield	24901 County Road 95 Davis CA, 95616	(530) 756-0212	https://www.wpfd.net/
Willow Oak	18111 County Road 94B Woodland CA, 95695	(530) 662-0781	http://www.willowoakfire.com/
Winters	700 Main Street Winters CA, 95694	(530) 795-4131	https://www.wintersfire.org/
Yolo	37720 Sacramento Street Yolo CA, 95697	(530) 662-0566	https://www.yolofpd.org/
Zamora	33715 1 st Street Zamora CA, 95698	(530) 304-4964	https://zamorafire.specialdistrict.org/
CAL FIRE			
Brooks Station 37	14023 CA-16 Brooks CA, 95606	(530) 796-3506	

Fire departments generally serve cities and are staffed with paid professionals. The service area for a fire department is the boundary of the municipality or organization that it serves. For example, in Yolo County, the cities of West Sacramento, Davis, Winters, and Woodland have fire departments that serve their residents with district boundaries aligning with the municipal boundaries. Each of these municipal fire departments has multiple fire stations. The Yocha Dehe Fire Department and UC Davis Fire Departments serve the populations within their boundaries. Through mutual aid agreements and/or contract services with other fire protection agencies, fire departments and fire protection districts provide services outside of their boundaries. Many FPDs (e.g, East Davis, No Man’s Land, Springlake) contract with the nearest municipal FD for fire service. The wildland fire community is well known for developing federal, state, and local mutual aid agreements. Such automatic aid agreements allow the closest forces to respond to an incident as quickly as possible, regardless of jurisdiction. Such agreements may also describe how reimbursement will be conducted.

The 15 fire protection districts (FPDs) (Table 1) serve most of the unincorporated area in Yolo County outside of Tribal lands. See Other Mitigation and Preparedness Projects, below for issues facing and recommendations for FPDs.

COLLABORATION and PLANNING PROCESS

Although this plan is for Yolo County only, the Yolo County RCD led the Solano-Yolo Fire Safe Council Leadership Team to support the formation and development of the West Winters FSC and the Fire Safe Council in the Capay Valley as well as the Pleasants Valley FSC in Solano County. This peer-to-peer group met on Zoom monthly for a year to get ideas from one another, and included occasional guest speakers on building Fire Safe Councils.

Although the CWPP development process has not included working with Colusa County, our CAL FIRE Battalion Chief covers both Yolo and Colusa counties and can provide any collaboration as needed.

Key Partners

With funding from CAL FIRE, the Yolo County Resource Conservation District (YCRCD) in partnership with the Yolo County Office of Emergency Services formed the Yolo County Fire Safe Council (YCFSC) in 2021, concurrent with this CWPP process. The YCFSC provides education and outreach, and support to community fire safe councils in Yolo County. The CWPP development was led by the YCRCD with guidance and support from many partners, most importantly the membership of the YCFSC.

Community Fire Safe Councils provide strong local community connection and outreach. The Capay Valley Emergency Response Auxiliary & Fire Safe Council (CVERA & FSC) works in the foot print of the Capay Valley Fire Protection District (CVFPD) <https://www.yolocounty.org/government/board-of-supervisors/advisory-bodies/special-district-directory/fire-protection-districts>.

The West Winters Fire Safe Council covers Golden Bear Estates to Positas Road; the area is bounded by County Rd 87D to the east, State Hwy 128 to the south and west, and Bobcat ranch to the north.

Organization	Roles/Responsibilities
CALFIRE-Sonoma Lake Napa Unit (LNU)	<ul style="list-style-type: none"> • Provided project funding • Participated on the CWPP Steering Committee • Provided expert advisory role on fire planning
Capay Valley FPD FSC/CVERA	<ul style="list-style-type: none"> • Assistance with local outreach and education; essential participant in community input meetings
County of Yolo Office of Emergency Services	<ul style="list-style-type: none"> • Grant administration and management • Participated on the CWPP Steering Committee • Expert advisory role on County emergency planning issues
CWPP Steering Committee	<ul style="list-style-type: none"> • Reviewed and approved initial community base map with values and hazards • Developed initial project list content and structure • Evaluated and approved the Quantitative Wildfire Risk Assessment (QWRA) • Reviewed and provided input into the CWPP document
Digital Mapping Solutions	<ul style="list-style-type: none"> • Provided expertise on developing the CWPP • Developed the Quantitative Wildfire Risk Assessment (QWRA) • Built the Yolo County Living with Wildfire hub site and the Community Base Map
ForEverGreen Forestry	<ul style="list-style-type: none"> • Provided expertise and guidance on YCFSC and the CWPP development process • Facilitated community input meetings in Guinda for the CWPP
West Winters FSC	<ul style="list-style-type: none"> • Assistance with local outreach and education; essential participant in community input meetings • Participated on the CWPP Steering Committee
Wildland Res Mgt	<ul style="list-style-type: none"> • Provided expertise and guidance on forming the YCFSC and the CWPP development process • Facilitated community input meeting in Winters for the CWPP
Yolo County Fire Chiefs	<ul style="list-style-type: none"> • Provided local information and expertise • Provided leadership role in guiding the YCFSC
Yolo County Firefighters Association	<ul style="list-style-type: none"> • Reviewed and approved CWPP

Organization	Roles/Responsibilities
Yolo County Fire Safe Council	<ul style="list-style-type: none"> • Developed the CWPP project list • Created an impartial, quantitative system to rank projects • Reviewed and provided input into the YCFSC website • Reviewed the CWPP
Yolo County Resource Conservation District	<ul style="list-style-type: none"> • Obtained initial and follow-up grants for CWPP and FSC development and coordination • Grant reporting • Coordinated and facilitated the CWPP Steering Committee and Yolo County Fire Safe Council • Collaborated with Digital Mapping Solutions to create the Quantitative Wildfire Risk Assessment (QWRA), Yolo County Living with Wildfire hub site and the Community Base Map • Organized and helped facilitate community input meetings for the CWPP • Developed initial, revised, and final draft of CWPP, incorporating feedback at each stage • Offered fire preparedness and planning public education and outreach through social media and development of YCFSC website • Digitized the maps created with input from community and fire chiefs' input; managed the hub site



Photo 8: Tracy Katelman, ForeverGreen Forestry and a member of the Yolo County CWPP Steering Committee, leads a CWPP Community Workshop hosted by Yolo County FSC in Guinda, CA, where participants identified values, hazards, and priority projects.

The CWWP and the Multijurisdictional Local Government Hazard Mitigation Plan (HMP)

This plan addresses methods to mitigate the risk from several hazards in eight commitment areas (infrastructure, health, housing, economy, government services, education, environment, and land use). The 2018 plan is now being updated, to be completed in late 2023, with the participation of the cities, county, special districts, and private organizations. The current update is being completed with county-wide workshops, forums, and public outreach campaigns. The HMP provides mitigation strategies for several of the commitment areas that relate directly to wildfire mitigation. Many of the mitigation strategies identified in the HMP have been, or can be, used in conjunction with the CWPP, and funding from The Federal Emergency Management Agency (FEMA) through the HMP process can be used for projects identified in the CWPP. Items include ensuring reliable water sources for existing and new developments, developing defensible space programs, and providing adequate access roads that meet California Fire Code standards.

The CWPP Planning Process

CWPPs are generally updated every 5 years. This CWPP is a living document that can be used to track progress and plan future projects. If needed, the YCFSC will review and approve the annual changes, and include representation from the three main signatories in an annual process. A full formal review process, with signatures, is required for the five-year update.

Five Action Plans were developed by the CWPP Steering Committee, and the projects within them were identified by the Yolo County Fire Safe Council, community members and local and regional fire officials.

ACTION PLAN: COMMUNITY EDUCATION AND ENGAGEMENT

Priorities

Education is one of the eight goals of the Strategic Fire Plan for California. Since 2018, residents of western Yolo County have experienced large, damaging fires. They are learning about defensible space, home hardening and working with neighbors for safer communities. It is a priority to provide rural and other residents in the WUI with the information they need to be proactive to protect their homes and communities from fires and ember storms. It is also vital to build capacity for community Fire Safe Councils in the county.

Completed Projects and Maintenance Priorities

The Yolo County Fire Safe Council provides ongoing community education to ensure that citizens are aware of critical wildfire preparedness information. Community education focuses on:

1. Supporting community Fire Safe Councils. The YCFSC is currently coordinated by the YCRCD and is the umbrella organization for local or community-based Fire Safe Councils. YCRCD serves as a fiscal sponsor for grants and project management, and helps communities start new councils as needed. Programs include monthly meetings, FSC leadership meetings, trainings as needed, hosting the YCFSC website and managing social media.
2. Education. Since the YCFSC was formed in early 2021, it has offered educational workshops and webinars to increase community resiliency in high fire zones. Programs include:
 - Webinars on home hardening and defensible space

- Defensible Space Ambassador Training—FSC members trained to assess defensible space and provide neighbor-to-neighbor fire-safe education
 - Special presentations at YCFSC meetings on defensible space programs, chipper programs, address sign programs, FireWise communities, landscaping for fire, and other relevant topics.
3. Funding. The YCFSC intends to find and maintain long-term funding for the YCRCDC to serve as the county’s wildfire preparedness coordinator to provide education, outreach, website maintenance and social media.

Future Projects

(More detail is in the complete project list, located in the Appendix)

Proposed new and future projects include training homeowners on Defensible Space and home hardening, installing signage along highways in high fire areas, and obtaining LiDAR (Light Detection and Ranging—a remote sensing method that generates precise three-dimensional images of Earth, including vegetation).

Resources

- Yolo County Fire Safe Council, including the YCFSC website ([Yolo County Fire Safe Council \(yolofiresafe.org\)](http://yolofiresafe.org)), Facebook (<https://www.facebook.com/profile.php?id=100069373063568>) and Instagram pages.
- West Winters Fire Safe Council- wwintersfsc@gmail.com
- Capay Valley Emergency Response Auxiliary & Fire Safe Council (CVERA & FSC): <http://www.capayvalley.com/CVERA/index.cfm>
- CAL FIRE www.readyforwildfire.org
- California Fire Safe Council www.cafiresafecouncil.org
- Yolo County Office of Emergency Services: <https://www.yolocounty.org/government/general-government-departments/office-of-emergency-services>

ACTION PLAN: DEFENSIBLE SPACE AND HOME HARDENING

Priorities

Through the QWRA analysis, we have determined the areas of greatest wildfire risk to homes and communities. The YCFSC may apply for funding for cost share programs and/or support to assist homeowners unable to complete their own defensible space or home hardening work.

Increase Structural hardening: Yolo County has a mix of new and older homes; most of the older homes were built before the California WUI Building Codes were put in place in 2007. These structures require retrofits such as vents, screens, soffits and eave improvements. Measures to improve homeowner preparedness include educational resources, workshops and webinars. The YCFSC website will provide information and links to local and state building and fire codes for the general public and community Fire Safe Councils.

This CWPP is key to raising awareness of the importance of defensible space and home hardening techniques in a county where few homes have actually been lost to fire. However, there are a lot of homes and buildings in the WUI that are vulnerable to fire events, especially wind-driven ember storms, and most residents have not yet taken action to protect their properties.

Completed Projects and Maintenance Priorities

Working with the community fire safe councils, the YCFSC will continue to support and educate citizens to help create and improve defensible space and home/structural hardening.

Completed Projects:

1. Team Rubicon (<https://teamrubiconusa.org/>) volunteered in June of 2022 in the Capay Valley cutting down a stand of eucalyptus trees adjacent to a residence in Guinda and creating defensible space around the home of a senior citizen affected by the LNU Complex in 2020, and are planning to continue projects in the Capay Valley in early 2023.

Maintenance: Ongoing Projects:

1. Pilot Chipper Program. Using funding from Senator Bill Dodd's Early Action Fund, Yolo County OES purchased a large wood chipper for use by the Yolo County Flood Control and Water Conservation District (YCFWC), a County irrigation district. YCFWC has the staff and skill to maintain and operate the equipment. YCFSC and YCFWC conduct outreach and education and schedule the chipper to be transported to neighborhoods in high-fire areas where residents have trimmed vegetation and stacked the wood, ready for on-site chipping by YCFWC staff. Chipping is cleaner than pile burning and helps residents dispose of the vegetation generated by clearing defensible space. This program has been well received in the northwestern part of the county where there is heavy brush and nearby fires have occurred, and therefore should be continued. For more information on this program, click here: <https://drive.google.com/file/d/1iLKXCS3GkPUGIpzTEks2tsa07NNGK3MF/view>
2. Local fire protection districts and fire departments help their constituents with vegetation management when they have time and resources available.

Future Projects

(more detail is in the complete master list, located in the Appendix)

Proposed new projects vary from supporting homeowners to do their own work by purchasing fuel for large equipment owned by local volunteers to do larger scale vegetation work and a cost-share program for home hardening to obtaining funding to do the work for residents who are not able to do it themselves.

Resources

- Yolo County Fire Safe Council, including the YCFSC website: www.yolofiresafe.org.
- Regular informational postings on YCFSC Facebook and Instagram pages.
- CALFIRE www.readyforwildfire.org
- California Fire Safe Council www.cafiresafecouncil.org

- Yolo County Office of Emergency Services website:
<https://www.yolocounty.org/government/general-government-departments/office-of-emergency-services>

ACTION PLAN: EVACUATION AND ACCESS PLANNING

Evacuation is a highly technical issue, and therefore is led by law enforcement. Please refer to the Yolo Emergency Operation Plan (EOP) and Yolo Operational Area Multi-Hazard Mitigation Plan regarding law enforcement operational responsibilities for Yolo County Sheriff-Coroner, and local municipal law enforcement agencies.

<https://www.yolocounty.org/home/showpublisheddocument/24660/635289380535200000>, see page 34. This CWPP addresses the community education and support aspect of evacuation, identifying multiple issues and projects to improve both access for firefighters and egress for community members to safely evacuate during an incident. To further ensure safe and effective evacuation, elements of this CWPP should be incorporated into the Housing and Safety Elements of the Yolo County General Plan during its next update.

Priorities

Emergency access and egress is challenging in the hilly western part of the County. These roads are narrow, sometimes very windy, and in a few cases, extremely steep. In some areas, dense vegetation abuts narrow roads, which could potentially prevent or slow two-way traffic, and/ or produce enough heat when burning to constitute a barrier to travel. Of special concern: County Road 41. This is known as the Arbuckle grade, and should be an alternate escape route for Capay Valley but is currently washed out. Additionally, the bridge on County Road 34 leading to Audubon California's Bobcat Ranch is under-engineered to support heavy apparatus and equipment. This creates a barrier and causes delayed fire suppression response efforts to the west. There are multiple roads in the western part of the County that are the only access to neighborhoods and residences in the WUI; without alternate routes, issues here could impede evacuation and emergency vehicle access. Other communities, such as Golden Bear, have only one road in and out.

Notifications

Residents in the canyon and valley areas of both Yolo and Solano Counties have poor cell phone reception and have not been notified during past fire emergencies. During Supervisor Don Saylor's listening sessions in October 2020 after the LNU Lighting Complex, residents requested a better notification system, are still concerned about notifications in that area.

Further Priorities

- A notification system that spans the high fire areas in Yolo County
- Developing emergency notification systems that work in areas with poor internet and cell phone reception.
- Evacuation planning: developing clearly understood and reasonable procedures to allow residents to return to their homes after evacuation.

- Improving ingress and egress countywide especially for WUI roads that are the only access routes to a community.

Completed Projects and Maintenance Priorities

1. The low water bridge at County Road 40 for access to BLM land in the Blue Ridge area was rebuilt in 2022. Now there is a need for a commitment to maintain the vegetation along the road.
2. Address sign program for high fire areas funded and launched in 2022 between YCFSC, YCOES, and rural fire departments.
3. West Winters FSC/Winters FD: grant from the California State Firefighters Association to make signage along rural roads with QR codes to scan with maps and information for mutual-aid firefighters during a fire.

Future Projects

(More detail in the complete project list, located in the Appendix)

New and future projects can vary from clearing vegetation along overgrown roads to connecting roads for better access and evacuation to building a new bridge. Other projects are mapping access points, improving road signage and routes and creating lists of residents who will need assistance in the event of an evacuation. An important part of this process is to provide information to Yolo County residents on evacuation preparation that includes consideration of people of all abilities, with a focus on high fire areas, also called whole community outreach. A list of resource guides on this topic is in the Resource Table in the Appendix.

Resources

- Know Your Zone: <https://community.zonehaven.com/>
- Yolo Alert: www.yolo-alert.org
- CAL FIRE ready set go: <https://www.readyforwildfire.org/prepare-for-wildfire/ready-set-go/>

ACTION PLAN: HAZARDOUS FUELS MANAGEMENT

There are many different agencies and organizations in the high fire risk areas of Yolo County who are collaborating to reduce hazardous fuel loads and decrease the likelihood of large wildfires impacting at-risk resources. Early Action Funding from State Senator Bill Dodd in 2022 designated \$1.5 million to Yolo County; \$470,000 is for priority fuel reduction projects. CAL FIRE has been assisting with or leading fuel break projects along County roads or along historic fuel breaks in the SRA in Yolo County.

Using a combination of the Quantified Wildfire Risk Assessment, input from local firefighters, and community meetings we have determined the areas of greatest importance for fuels management. This CWPP is key to obtaining funding for future projects and maintaining ongoing projects.

Priorities

Implement priority hazardous fuel reduction projects identified in this CWPP such as using prescribed fire for fuel breaks, removing eucalyptus groves, creating shaded fuel breaks (removing understory fuels but

leaving trees) and reducing fuels along rural county roads so they can be better used for access for firefighters and fuel breaks.

Note: During the planning and implementation of all projects it is important to ensure culturally sensitive resources are identified and protected.

Completed Projects and Maintenance Priorities

For an interactive map of projects in process and projects with abstracts, please see this link: <https://arcg.is/1uDyyb>

1. Start a Prescribed Burn Association (PBA) in Yolo County. The Yolo County RCD and Yolo County OES received funding for this project in July 2022. The PBA is in development (October 2022).
2. Conduct annual Prescribed Burn along State Highway 128 in 2021 and 2022; this is expected to continue annually, supporting large, working lands as well as maintaining a key evacuation route.
3. Winters Area Large Tree Removal: using Early Action Funding (SB 129) and working with the West Winters Fire Safe Council, the Yolo County Office of Emergency Services coordinated the removal of stands of highly flammable eucalyptus groves in the hills west of Winters.
4. Brush and Tree trimming along county and community roads in Winters: using Early Action Funding (SB 129) and working with the West Winters Fire Safe Council, the Yolo County Office of Emergency Services coordinated brush and tree trimming along roads in Winters.
5. Fuels Management: Guinda Wildfire Protection Project: using Early Action Funding (SB 129) and working with Capay Valley Emergency Response Auxiliary (CVERA) and Capay Valley FPD Fire Safe Council, the Yolo County OES coordinated this project. The project manages fuels in the drainage ditch easement on the north side of Cleveland Street in Guinda.
6. County Road 41A: County road 41A in Rumsey was the site of two arsons in 2021. The thick brush along hillsides is inaccessible by Type III engines, which impinged heavily on fire department access to and from affected residences. This is a one-lane road that is the sole access route, and due to the terrain, it must be traveled at relatively low speeds - a bottleneck for incoming responders and outgoing evacuees. It is critical that fuels be reduced along the roadside both for access/egress and so the road can be used as an effective fire break.
7. Fuels Management: 8359 State Hwy 16 fuel abatement and fire prevention: The project site borders CA-16 and is located within 1 mile of the town of Guinda. The site contains a dense forest of mature eucalyptus, pine, cypress, and other evergreen trees.
8. Fuels Management: North Fork Putah Creek, South Davis: Work was completed by the CCC and will require ongoing maintenance. This project is in the Wildland-Urban Interface with the Willowbank neighborhood on the south bank, and multiple City of Davis neighborhoods on the north bank. These residences are well within 100 feet of the heavily overgrown fuel in the channel. The project addresses reducing fuels to safer levels, eliminating conditions that contribute to the rapid spread of fire in the surrounding WUI area and allowing a rapid response from firefighting forces.
9. "Front Country-Grant Line road" fire break: Establish a fuel reduction line at the base of the foothills encapsulating the largest portion of the Blue Ridge North from County Road 40 to the South near Winters. The fuel break will be used for emergency access or burning out operations

to slow the spread of fire, and could prevent fires from moving across county lines. A CEQA Notice of Exemption for the project was filed in November 2022 and CAL FIRE will be conducting outreach to landowners to obtain access agreements. Work is expected to be completed during the spring of 2023.

10. CAL FIRE has been working on larger fuel break projects along county roads 78A and 54, which lead to the Blue Ridge, in order to stop wildfire and break the Berryessa Blue Ridge into blocks to assist firefighters in limiting the spread of fire to the north or south, depending on the wind.

Future Projects

(more details are in the complete project list, located in the Appendix)

Proposed projects are similar to the ongoing projects mentioned above. Some are very large scale and focus on ecological health, such as removing large, fire prone invasive weeds from Cache Creek, shaded fuel breaks, or large prescribed burns. Others target dead orchards, abandoned lots and mowing around natural areas.

Resources

- Yolo County Fire Safe Council, including the YCFSC website: www.yolofiresafe.org, Facebook and Instagram pages.
- CAL FIRE www.readyforwildfire.org
- CAL FIRE Fuels Reduction Guide: <https://www.fire.ca.gov/media/umkhhdb/fuels-reduction-guide-final-2021-print.pdf>

ACTION PLAN: OTHER MITIGATION & PREPAREDNESS PROJECTS

Priorities

Identify as needed.

Completed Projects and Maintenance Priorities

None identified at this time.

Future Projects

(more detail in the complete project list, located in the Appendix)

Projects are proposed such as undergrounding power lines, providing generators for communities during power outages and providing solar powered back-up generators. Other proposals include “KnoxBox” installations to driveways (secured access keys, with entry codes restricted to emergency first-responders only), installing large water tanks and banning campfires and fireworks in the summer. The following projects and programs may be offered for post-fire recovery assistance in the event of a wildfire:

Technical assistance from Yolo County RCD and Natural Resources Conservation Service

Native plants and seeds available for revegetation for landowners

Erosion control materials available for landowners

Firefighting Resources

Fire protection districts (FPDs) serve unincorporated communities in Yolo County and are mostly staffed by volunteers. FPDs in the county are facing multiple issues, which include declining volunteer participation and challenges associated with long-term sustainability. For example, in the Yolo County FPD Municipal Service Review (MSR)/ Sphere of Influence report adopted in July 2022, it was recommended that the Elkhorn FPD cede its services to the cities of Woodland and West Sacramento. Additionally, it was recommended that the No Man's Land FPD be dissolved and annexed to East Davis FPD. The 2022 LAFCo MSR also found that a cooperative countywide regional fire service framework would enhance services provided across all districts. Recommendations common to all FPDs include replacement of all fire apparatus after not more than 25 years of service life and adoption of a standardized fire apparatus inventory. The report (see report here: <https://www.yololafco.org/fire-protection-districts>) also provides specific recommendations for each of five service areas.

Table 1 on page 24 provides a list of firefighting agencies and jurisdictions in Yolo County. Maps of the districts can be found at this link: <https://www.yolocounty.org/government/board-of-supervisors/advisory-bodies/special-district-directory/fire-protection-districts>

- Capability of Yolo County: Yolo County Fire Protection Districts Review of Challenges and Strategic Approaches
<https://www.yolocounty.org/home/showpublisheddocument/68056/637483870491770000>
- Local fire agencies/jurisdictions and Fire Protection Districts
 - Maps available: <https://www.yolocounty.org/government/board-of-supervisors/advisory-bodies/special-district-directory/fire-protection-districts>
 - LAFCo FPD Profiles page: <https://www.yololafco.org/fire-protection-district-profiles>

APPENDICES

Yolo County Fire Safe Council Members, February 2023

Voting Members

- 1 American Red Cross
- 2 Audubon CA-Bobcat Ranch
- 3 Cache Creek Conservancy
- 4 Capay Valley Fire District Fire Safe Council
- 5 Capay Valley Vision
- 6 Capay Valley Fire Protection District
- 7 City of Winters
- 8 Dunnigan Fire Protection District
- 9 East Davis County Fire Protection District
- 10 Esparto Fire Protection District
- 11 Golden Bear Fire Safety Committee
- 12 Madison Fire Protection District
- 13 One Hundred Club
- 14 West Winters Fire Safe Council
- 15 Winters Fire Protection District
- 16 Winters Senior Apartments
- 17 Yocha Dehe Fire Department
- 18 Yolo County Commission on Aging & Adult Services
- 19 Yolo County Board of Supervisors, District 4-Provenza
- 20 Yolo County Board of Supervisors, District 2-Friechs
- 21 Yolo County Board of Supervisors, District 5 -Barajas
- 22 Yolo County In-Home Supportive Services Advisory Committee
- 23 Yolo County Housing Authority

Non-Voting Members

- 1 CalTrans-District 3
- 2 Eric Sagara, Madison
- 3 ForEverGreen Forestry
- 4 Natural Resources Conservation Service

List of Meetings for Community Input

Recordings, agenda and minutes of ALL YCFSC meetings are on the YCFSC website at yolofiresafe.org

Meeting name	Purpose	Date	# Attendees
Community Input Meeting; Guinda	Share information about YCFSC and CWPP; learn about values and hazards in the community for CWPP Project List	8/11/2022	28
Community Input Meeting; Guinda	Share information about YCFSC and CWPP; learn about values and hazards in the community for CWPP Project List	9/14/2022	30
Community Input Meeting; virtual	Share information about YCFSC and CWPP; learn about values and hazards in the community for CWPP Project List	12/8/2022	12
Community Input Meeting; Winters	Share information about YCFSC and CWPP; learn about values and hazards in the community for CWPP Project List	9/15/2022	15
CVERA/Capay Valley FSC meeting	Share information about starting a Fire Safe Council	8/4/2021	12
CVERA/Capay Valley FSC meeting	Project planning meeting	1/4/2023	6
CVERA/Capay Valley FSC meeting	Project planning meeting	1/25/2023	8
CWPP Steering Committee meeting	Welcome new committee, discuss and approve the Yolo County CWPP development process and timeline	2/23/2021	9
CWPP Steering Committee meeting	Update on QWRA process	3/24/2021	10
CWPP Steering Committee meeting	CWPP Capacity Building Needs—Mapping requests from Steering Committee	4/28/2021	8
CWPP Steering Committee meeting	Yolo County CWPP-Risk Assessment and Values map: What to look for on the map; what to change	5/21/2021	15
CWPP Steering Committee meeting	Review and accept fuel model and existing data layers	6/10/2021	8
CWPP Steering Committee meeting	Review project ranking table	11/9/2021	6
CWPP Steering Committee meeting	Review and Approve CWPP Project Ranking Sheet	11/30/2021	8
CWPP Steering Committee meeting	Review and Discuss CWPP Projects for recommendation to the County	1/5/2022	8
CWPP Steering Committee meeting	Next steps for starting the CWPP	2/2/2022	6
CWPP Steering Committee meeting	What the Yolo Co CWPP should look like; outline	3/9/2022	6
CWPP Steering Committee meeting	YC CWPP Outline approved	4/13/2022	6
CWPP Steering Committee meeting	Outline details reviewed	5/5/2022	6
CWPP Steering Committee meeting	CWPP draft reviewed	11/4/2022	5
Education: Defensible Space Inspection Training	Educational event to train members of CVFSC, WWFSC and PVFSC to assess defensible space for neighbors	3/27/2022	40
Education: Home Hardening webinar	Info for homeowners; co-managed w/ Green Valley FSC in Solano County	6/28/2021	48
Education: Surviving Wildfire webinar	How to prepare for wildfire; co-sponsored w/ Green Valley FSC	4/26/2021	60
Education: UCCE/NRCS/RCD Post LNU Fire workshop	Post-fire actions for landowners	9/10/2020	115

Meeting name	Purpose	Date	# Attendees
Fire Chief meeting, East Davis County FPD staff	Share information about YCFSC and CWPP; learn about values and hazards in district	8/9/2021	2
Fire Chief meeting, Madison FPD	Share information about YCFSC and CWPP; learn about values and hazards in district	3/1/2022	1
Fire Chief meeting; Capay Valley	Attend local firefighter training meeting to share hare information about YCFSC and CWPP; learn about values and hazards in district	8/26/2021	20
Fire Chief meeting; Esparto FD	Share information about YCFSC and CWPP; learn about values and hazards in district	8/10/2021	2
Fire Chief meeting; Knight's Landing FPD	Share information about YCFSC and CWPP; learn about values and hazards in the community for CWPP Project List	8/26/2022	2
Fire Chief Meeting; UC Davis FD	Share information about YCFSC and CWPP; learn about values and hazards in district	7/21/2022	1
Fire Chief meeting; West Plainfield FPD	Share information about YCFSC and CWPP; learn about values and hazards in district	6/24/2022	1
Fire Chief meeting; West Sacramento FD	Share information about YCFSC and CWPP; learn about values and hazards in district	8/10/2022	1
Fire Chief meeting; Willow Oak FPD	Share information about YCFSC and CWPP; learn about values and hazards in district	5/13/2022	1
Fire Chief Meeting; Winters FD	Share information about YCFSC and CWPP; meet interim Fire Chief	8/25/2022	1
Fire Chief meeting; Zamora FPD	Share information about YCFSC and CWPP; learn about values and hazards in the community for CWPP Project List	9/21/2022	11
Fire Commissioner meeting, Capay Valley FPD	Inform Commissioners about YCFSC and CWPP	6/13/2022	12
Fire Commissioner meeting, Dunnigan FPD	Inform Commissioners about YCFSC and CWPP	6/9/2022	8
Fire Commissioner meeting, Madison FPD	Inform Commissioners about YCFSC and CWPP	1/11/2021	5
Fire Commissioner meeting, West Plainfield FPD	Share information about YCFSC and CWPP; learn about values and hazards in district	7/19/2022	15
Fire Commissioner meeting, Willow Oak FPD	Share information about YCFSC and CWPP; learn about values and hazards in district	7/5/2022	10
Fire Commissioner meeting; Knight's Landing	Share information about YCFSC and CWPP; learn about values and hazards in the community for CWPP Project List	9/12/2022	7
Fire Commissioners meeting, Clarksburg	Share information about YCFSC and CWPP	10/13/2022	6
Fire Commissioners meeting, Clarksburg	Share information about YCFSC and CWPP; learn about values and hazards in the community for CWPP Project List	12/1/2022	6
Fire Commissioners meeting, Dunnigan	Fire Commissioners meeting, Clarksburg	10/13/2022	15
Fire Commissioners meeting, Yolo	Share information about YCFSC and CWPP; learn about values and hazards in the community for CWPP Project List	10/3/2022	8
Landowner meeting	Post-fire site assessment	10/22/2020	1

Meeting name	Purpose	Date	# Attendees
Landowner meeting	Post-fire site assessment	11/13/2020	2
Landowner meeting	Meet with landowner and CAL FIRE staff about fire prevention	1/27/2021	12
Outreach: Festival da la Comunidad, Winters	FSC and CWPP outreach booth with Solano Fire Safe Council	9/24/2022	20
Outreach: Salmon Festival, Winters	FSC and CWPP outreach booth with Solano Fire Safe Council	11/5/2022	200
Outreach: Solano RCD Plant Sale	Educational event on fire-safe landscaping; YCFSC, WWFSC and PVFSC outreach tables	3/26/2022	200
Outreach: Winters Natural Resources Committee meeting	Share information about YCFSC and CWPP	11/21/2022	12
Solano -Yolo FSC Leadership Team	Peer-to-peer learning w/ CVFSC, PVFSC and WWFSC	7/25/2022	8
Solano -Yolo FSC Leadership Team	Peer-to-peer learning w/ CVFSC, PVFSC and WWFSC	8/22/2022	6
Solano -Yolo FSC Leadership Team	Peer-to-peer learning w/ CVFSC, PVFSC and WWFSC	9/26/2022	5
Solano -Yolo FSC Leadership Team	Peer-to-peer learning w/ CVFSC, PVFSC and WWFSC	10/24/2022	4
Solano-Yolo FSC Leadership team	Peer-to-peer learning w/ CVFSC, PVFSC and WWFSC	8/25/2021	12
Solano-Yolo FSC Leadership team	Peer-to-peer learning w/ CVFSC, PVFSC and WWFSC	9/21/2021	12
Solano-Yolo FSC Leadership team	Peer-to-peer learning w/ CVFSC, PVFSC and WWFSC	10/25/2021	12
Solano-Yolo FSC Leadership team	Peer-to-peer learning w/ CVFSC, PVFSC and WWFSC	11/22/2021	8
Solano-Yolo FSC Leadership team	Outreach support for FSC w/ CA FSC	12/20/2021	8
Solano-Yolo FSC Leadership team	Peer-to-peer learning w/ CVFSC, PVFSC and WWFSC	1/24/2022	9
Solano-Yolo FSC Leadership team	Planning potential trainings	2/28/2022	15
Solano-Yolo FSC Leadership team	D-Space training--post assessment	3/28/2022	9
Solano-Yolo FSC Leadership team	Outreach support for FSC w/ CA FSC	4/25/2022	9
Solano-Yolo FSC Leadership team	Peer-to-peer learning w/ CVFSC, PVFSC and WWFSC	5/23/2022	5
Solano-Yolo FSC Leadership team	Peer-to-peer learning w/ CVFSC, PVFSC and WWFSC	6/27/2022	8
West Winters FSC meeting	Support formation of WWFSC	5/26/2021	12
West Winters FSC meeting	Support formation of WWFSC	7/21/2021	20
West Winters FSC meeting	Support WWFSC steering committee	4/20/2022	6
West Winters FSC meeting-steering committee	Support formation of WWFSC	7/26/2021	6
Winters Hispanic Advisory Committee meeting	Share information about YCFSC and CWPP in Spanish	7/6/2022	12
WWFSC meeting	Project planning with WWFSC	6/15/2022	5
WWFSC meeting	Project planning with WWFSC	8/17/2022	5

Meeting name	Purpose	Date	# Attendees
YCFSC Website Development Committee	YSFCS committee to advise on website development and content	11/3/2021	4
YCFSC Website Development Committee	YSFCS committee to advise on website development and content	1/6/2022	3
YCFSC Website Development Committee	YSFCS committee to advise on website development and content	4/27/2022	4
YCFSC Website Development Committee	YSFCS committee to advise on website development and content	6/17/2022	4
Yolo County Board of Supervisors	Brief District County Supervisors on YCFSC at Board; Board approved new MOU with RCD for fire planning	6/8/2021	45
Yolo County Board of Supervisors	Annual update to Board on YCRCD, including YCFSC and CWPP update	6/15/2022	45
Yolo County Board of Supervisors	Brief District 3 County Supervisor	9/29/2022	1
Yolo County Board of Supervisors	Brief District 5 County Supervisor	10/6/2022	1
Yolo County Board of Supervisors	Brief District 5 County Supervisor	10/6/2022	1
Yolo County Board of Supervisors	Brief incoming District 3 County Supervisor	12/5/2022	1
Yolo County Board of Supervisors	Annual update to Board on YCRCD, including CWPP update	12/6/2022	45
Yolo County Fire Chiefs-All Agency Meeting	Inform County Chiefs and other emergency officials about YCFSC and CWPP	3/9/2021	40
Yolo County Fire Chiefs-All Agency Meeting	Update County Chiefs and other emergency officials about YCFSC and CWPP	6/14/2022	40
Yolo County Fire Chiefs-All Agency Meeting	Update County Chiefs and other emergency officials about YCFSC and CWPP	9/13/2022	35
Yolo County Fire Safe Council	Kick off meeting	2/23/2021	98
Yolo County Fire Safe Council	How to start a Fire Safe Council	3/24/2021	75
Yolo County Fire Safe Council	Roles of Partners in Fire Safe Councils	4/28/2021	50
Yolo County Fire Safe Council	Overview and update of YCFSC formation; Review of the draft of the bylaws + feedback	5/26/2021	45
Yolo County Fire Safe Council	Review, discuss and approve draft bylaws; Project updates from members (start a project list)	6/23/2021	50
Yolo County Fire Safe Council	Community input on the Wildfire Risk Assessment	7/28/2021	45
Yolo County Fire Safe Council	Discuss and approve draft bylaws; Introduce the Yolo County CWPP Hub site	8/25/2021	35
Yolo County Fire Safe Council	Approve applications for voting membership; Create YCFSC Website Advisory Committee	9/22/2021	35
Yolo County Fire Safe Council	Standing reports; Rural Residential Addresses and Neighbor Database	10/26/2021	35
Yolo County Fire Safe Council	FireWise USA® National Fire Protection Association brief presentation; CWPP Project table and ranking info	11/17/2021	25
Yolo County Fire Safe Council	Approve CWPP Project Ranking sheet criteria; funding update	1/26/2022	38
Yolo County Fire Safe Council	Standing reports; turn in signatures for bylaws	2/23/2022	35

Meeting name	Purpose	Date	# Attendees
Yolo County Fire Safe Council	Chipper Program: wildfire fuel reduction in the Wildland Urban Interface:	3/23/2022	35
Yolo County Fire Safe Council	Planning with Community FSCs: Address signs and chipper program input	4/27/2022	35
Yolo County Fire Safe Council	Planning with Community FSCs: Address signs and chipper program—programs are launched, input welcome	5/25/2022	30
Yolo County Fire Safe Council	FireWise Communities—what are they? Fire Captain Shane Galvez	6/22/2022	30
Yolo County Fire Safe Council	Ember Defense: Top home hardening concerns and how to mitigate risks from ember storms	7/27/2022	25
Yolo County Fire Safe Council	Using Grazing as Vegetation Management for Fuel Reduction	8/24/2022	30
Yolo County Fire Safe Council	Yolo County Community Wildfire Protection Plan Outline and Project List	9/28/2022	30
Yolo County Fire Safe Council	Request for Input: Yolo County Community Wildfire Protection Plan Project List	10/26/2022	30
Yolo County Fire Safe Council	Walk through the CWPP Project list	11/16/2022	25
Yolo County Fire Safe Council	Walk through the CWPP Document	12/14/2022	22
Yolo County Fire Safe Council	Review CWPP Document	1/25/2023	32

The Complete Yolo County CWPP Project List

Listed alphabetically by location

Project Lead or Project Proponent	Project Location	Project Type	Secondary Project Type	Project Name	Project Description	Status/ Time frame
CVERA&FSC	Capay Valley	Community Education and Engagement	Other mitigation and preparedness projects	Capay Valley Capacity Building Project	This project will build capacity in the Capay Valley Community through the following activities: education on fire prevention and risk reduction, establishment of volunteer firebreak, home and property fire risk assessment and rapid response teams, neighbor-to-neighbor evacuation support, development of evacuation plans, and purchase of necessary equipment and fuels to run equipment– potential to export this project template to other high-fire areas.	Proposed
CVFPD	Capay Valley	Fuels Mgmt	D-Space and Home Hardening	Capay Valley Equipment Fuel	Provide equipment fuel for local volunteers to do veg removal in Capay Valley	Proposed
CVFFD	Capay Valley	Fuels Mgmt	D-Space and Home Hardening	Capay Valley Homes Fuels Cleanup Program	Work with individual landowners to clean up properties in need of fuels management and defensible space work	Proposed
CVERA&FSC	Capay Valley	Fuels Mgmt	Evacuation and Access Planning	County Rd 41 A Fuel reduction	Vegetation clearing along County Road 41A. This is a one-lane road, one way in and one way out, and due to the terrain, it must be traveled at relatively low speeds - a classic bottleneck for incoming responders and outgoing evacuees. It is critical that fuels be reduced along the roadside both for access/egress, and also so the road can be used as an effective fire break.	In process
Yolo Co. Public Works	Capay Valley	Fuels Mgmt	Evacuation and Access Planning	County Road 40 Road Maintenance	Obtain long term commitment to maintain the veg along the road up the canyon. CAL FIRE could be responsible, or would rafting companies help. Will need to work with the BLM and possibly do NEPA	Proposed

Project Lead or Project Proponent	Project Location	Project Type	Secondary Project Type	Project Name	Project Description	Status/ Time frame
Yolo Co. Public Works	Capay Valley	Evacuation and Access Planning		County Road 40: Replace low-water bridge	Replacement of the bridge is necessary to facilitate access.	Complete
Yolo Co. Public Works/OES	Capay Valley	Evacuation and Access Planning		County Road 41: Re-route CR 41 at Cache Creek	Re-route County Road 41 around the wash out at Cache Creek for access and second escape route from Capay Valley	In process - funding needed. County OES applied for outside funding to purchase land for relocating the road.
CALFIRE	Capay Valley	Fuels Mgmt	Evacuation and Access Planning	County Road 53 Extension & Improvement	Extend and improve County Road 53 to the West. Veg clearing for visibility AND add turnouts so vehicles can pass on the road so residents can evac while FD is going in.	Ongoing
CALFIRE	Capay Valley	Fuels Mgmt	Evacuation and Access Planning	County Road 78 Extension & Improvement	Extend and improve County Road 78A into hills for fire access	Ongoing
Community Member	Capay Valley	Other mitigation and preparedness projects		Emergency Generator Project	Provide generators for individual community members during power outages	Proposed
YDFD, CALFIRE & Yolo County & FDS	Capay Valley	Fuels Mgmt		Front Country Fire Break Maintenance	Front Country/Grant Line Rd firebreak along historic fire breaks to protect the western end of the Capay Valley	In process- Early Action/Dodd funding

Project Lead or Project Proponent	Project Location	Project Type	Secondary Project Type	Project Name	Project Description	Status/ Time frame
Yocha Dehe Fire Department	Capay Valley	Evacuation and Access Planning		Grantline fuel break gates & items related to installation	Install gates along the Front County/Grant line fuel break to allow access for fire equipment	Proposed
CVERA&FSC	Capay Valley	Other mitigation and preparedness projects		Hazard Identification and Mapping Task Force	Hazard identification and mapping task force	Proposed
CVFPD	Capay Valley	Evacuation and Access Planning		Ingress/Egress s Capay Valley	Evacuation and access to eastern hills from the Capay Valley. Map and possibly improve potential shallow-water crossings. CVFPD volunteers may map it.	Proposed
YDFD and Community	Capay Valley	Fuels Mgmt		Prescribed Burning in the Capay Valley	Prescribed burning on private and Tribal land in the Capay Valley. Work with YDE Fire Department and Yolo PBA	Proposed
YCRCD	Capay Valley	Fuels Mgmt		Putah-Cache Arundo Eradication Program	The Yolo County RCD proposes to collaborate with local partners and work with experienced local agencies, licensed contractors and the California Conservation Corps to treat Arundo donax (arundo or giant reed) and other invasive riparian species such as salt cedar (tamarisk parviflora) with the intent to eradicate arundo from the Cache Creek watershed, thus reducing the fire risk from the large, monospecific stands of these highly flammable plant species.	In process
Community Member	Capay Valley	Other mitigation and preparedness projects		Rumsey Hall/ Guinda Grange Generators	Install generators at Rumsey Hall and Guinda Grange for the community hubs during power safety shut offs	Proposed
Community Member	Capay Valley	Other mitigation and preparedness projects		Solar Power Backup Generators	Provide solar powered backup generators	Proposed

Project Lead or Project Proponent	Project Location	Project Type	Secondary Project Type	Project Name	Project Description	Status/ Time frame
CVFPD	Capay Valley	Fuels Mgmt	Evacuation and Access Planning	State Hwy 16 Prescribed burning and vegetation management	Prescribed burning and vegetation management along State Hwy 16	Proposed
Community Member	Capay Valley	Other mitigation and preparedness projects		Underground Power Line Project	Install underground power lines	Proposed
Community Member	Capay Valley	Other mitigation and preparedness projects		Water Tank Project	Assist community with water tanks	Proposed
CVERA&FSC	Capay Valley - consider scaling up to other areas	Evacuation and Access Planning	Community Education and Engagement	Access Maps	Create detailed access maps for district (possibly Avenza maps)	Proposed
CVERA&FSC	Capay Valley - consider scaling up to other areas	Fuels Management	Community Education and Engagement	Capay Valley Fuel Task Force	Create a fuel break task force	Proposed
Community & YCRCD & other conservation partners	Capay Valley - consider scaling up to other areas	Fuels Management		Capay Valley Restoration: Grasses and Oak Woodland	Using a variety of methods including prescribed grazing in appropriate areas, reduce fuel loads and remove invasive and non-native species in former oak woodland habitat. Plant native oak woodland species, including grasses, as necessary to restore structure and function to the ecosystem.	Proposed

Project Lead or Project Proponent	Project Location	Project Type	Secondary Project Type	Project Name	Project Description	Status/ Time frame
YDFD/Env. Department	Capay Valley - other high risk areas, including some of the sloughs in the southwest corner of the West Winters area	Fuels Management	Community Education and Engagement	Western Yolo LiDAR Imaging project	LiDAR data would be collected for the western region of the county, including high-risk areas such as Winters and the Blue Ridge Mountains. LiDAR maps include surface elevations, fuel types and locations, burn scars and overall forest or habitat health. This information will be useful for fire management planning efforts such as identifying areas for fuel reduction or fire breaks.	Proposed
YDFD	Capay Valley proposed-expand to other high fire areas?	Evacuation and Access Planning	Community Education and Engagement	Emergency Response Team (ERT) Mobile Data Terminals	This project will provide fixed tablets in engines; info can be updated live. Data will include info on residents who might need extra help and/or have large animals. CVFPD needs 5. Outreach is something YCRCD could assist with - if CVFPD would share survey questions, RCD may be able to assist with outreach.	Proposed
CAL FIRE	Capay Valley/ Rumsey Canyon	Fuels Management		Valley Vista Fuel Break	Maintain historic fuel breaks along ridges at the north end of Capay Valley from Valley Vista Trail to county line	In process
Clarksburg FPD	Clarksburg	Fuels Management		Clarksburg Old Lumber Yard Cleanup	Clean up abandoned properties --former lumber yard behind Station 40	Proposed
Clarksburg FPD	Clarksburg FPD-various	Fuels Management	Evacuation and Access Planning	Clarksburg Fuels Management	Fuels management along Babel Slough Rd, Waulkeena Rd, and the Deepwater Channel at CR107	Proposed

Project Lead or Project Proponent	Project Location	Project Type	Secondary Project Type	Project Name	Project Description	Status/ Time frame
East Davis County Fire Protection District	Davis	Fuels Management	D-Space and Home Hardening	North Fork Putah Creek Defensible Space and Home Hardening/Fuels Treatment project	Baseline of fuel reduction in the N. Fork Putah Creek, running from Mace Blvd. to Drummond Ave.—which is a Wildland-Urban Interface with the Willowbank (Yolo County) neighborhood on the south bank, and multiple City of Davis neighborhoods on the north bank.	Maintenance Phase
Dunnigan FD	Dunnigan	Evacuation and Access Planning	Fuels Management	County Roads 88A, 88B & 88C Fuel Removal	Dunnigan eucalyptus grove: County Roads 88A, 88B and 88C are very narrow vegetation should be trimmed back; and alleys of these roads are not accessible to fire trucks	Proposed
Dunnigan FD	Dunnigan	Fuels Management		Eucalyptus Grove Fuel Reduction	Eucalyptus tree grove is high hazard. North end of the grove is most dense and hazardous. Limb up or cut down trees	Proposed
Dunnigan FD	Dunnigan	Evacuation and Access Planning		Tehama-Colusa Canal Road Area: Improved Access for County Roads west of T-C canal	County roads to the west of the Tehama-Colusa canal between CR 2 and CR 6 are difficult to navigate for fire trucks. In hills with light flashy fuels	Proposed
Esparto FD & possibly County	Esparto	Evacuation and Access Planning		County Road 23 Access	Open and maintain County Rd 23 for emergency access; connect to County Rd 81	Proposed
Esparto FD & possibly County	Esparto	Evacuation and Access Planning		County Road 25 and CR 81 Connection	Connect County Rd 25 to County Rd 83A	Proposed

Project Lead or Project Proponent	Project Location	Project Type	Secondary Project Type	Project Name	Project Description	Status/ Time frame
Community Member	Esparto	Fuels Management	D-Space and Home Hardening	Lamb Slough Ladder Fuels Project	Remove dead trees, reduce ladder fuels behind the Senior Center, reduce ladder fuels in the Capay Cemetery, and clean up overgrown alleyways in Esparto.	Proposed
CVERA&FSC	Guinda	Fuels Management	Evacuation and Access Planning	8359 State Hwy 16 fuel abatement and fire prevention project	The project site borders CA-16 and is located within 1 mile of the town of Guinda. The site contains a dense forest of mature eucalyptus, pine, cypress, and other evergreen trees. The accumulation of tree litter plus standing and fallen dead trees represents a potential fire hazard. Removing all the dead trees and tree litter would accomplish 3 goals: reduce vegetation along CA-16; reduce the risk to evacuation efforts; and structure protection.	In process
CVERA&FSC	Guinda	Evacuation and Access Planning		County Road 49 and CR 45 Connection	Create access from County Rd 49 to 45 - this project would entail an easement on private property and getting a bridge over a drainage - this was an "ideal world/ wish list" type of project, very expensive.	Proposed
Western Yolo Grange Ass'n	Guinda	Fuels Management	Evacuation and Access Planning	Guinda Wildfire Protection Project	This project involves selective clearing of vegetation, tree slash, brush, and fallen limbs along the drainage ditch easement on the north side of Cleveland Street in Guinda.	In process- Early Action/Dodd funding
YCRCD & others	High fire areas	Community Education and Engagement	Other mitigation and preparedness projects	Climate-resilient Post-fire Recovery Technical Assistance and Education Program	YCRCD, as a county-wide or bi-county effort in collaboration with Solano RCD, proposes to develop and implement a comprehensive program that includes education workshops and technical assistance focused on post-fire assessment and recovery, erosion, forest health, rural road repair, and access to cost-share resources. The program will provide erosion control materials for landowners in high-risk areas for erosion and it will provide education on climate-friendly post-recovery options by education landowners about and providing appropriate native plants and seeds for revegetation in high-fire areas.	Proposed

Project Lead or Project Proponent	Project Location	Project Type	Secondary Project Type	Project Name	Project Description	Status/ Time frame
YCFSC, Community FSC	High fire areas	Community Education and Engagement	D-Space and Home Hardening	Defensible Space and Home Hardening Project	Comprehensive program (countywide or bi-county in collaboration with Solano County) that includes educational workshops/webinars focused on the fire risk assessment of homes and surrounding areas and measures property owners should take to decrease that risk; training for org staff and volunteers to conduct assessments; possible cost-share or incentive programs. YCRC staff have been trained through the NVFC Train the Trainer program.	Parts of this can be implemented now under current programs. Ongoing funding will be needed to continue and/or expand.
Yolo Co. OES	High fire areas	Evacuation and Access Planning	Community Education and Engagement	Emergency Alert System	Hire a consultant to evaluate an emergency alert system that will reliably inform all residents in high fire zone of an emergency, including the need to evacuate, safe evacuation routes, and the nature of the emergency.	In process
CVERA&FSC, WWFSC, other partners	High fire areas	Evacuation and Access Planning	Community Education and Engagement	Evacuation Assistance Needed List	Create list of residents requiring additional assistance with evacuation	Proposed
Greater Winters CWPP	High fire areas	Other mitigation and preparedness projects		Fire-Season Fire Bans	Safety: Ban campfires and barbecue fires in public parks during fire season; Ban fireworks in the City of Winters and rural areas of Yolo and Solano Counties. From Greater Winters CWPP (2018)	Proposed

Project Lead or Project Proponent	Project Location	Project Type	Secondary Project Type	Project Name	Project Description	Status/ Time frame
YCRCD	High fire areas	D-Space and Home Hardening	Fuels Mgmt	FLASH Program (Fire-adapted Landscapes and Safe Homes Program)	YCRCD proposes this program for Yolo County or as a collaboration with Solano RCD to include both Yolo and Solano counties. The FLASH Program (Fire-adapted Landscapes and Safe Homes Program)—is a cost-share program designed to incentivize defensible space management and creation for homeowners to help them comply with Defensible Space laws. The program will assist property owners with reducing their wildfire risk by managing flammable vegetation around their homes and along evacuation routes and by identifying and treating sources of structural ignition such as wooden decks, open vents, and other common fire hazards.	Potentially including in a 2023 proposal for CAL FIRE Wildfire Prevention grant
CVERA&FSC /WWFSC	High fire areas	Other mitigation and preparedness projects	Evacuation and Access Planning	High Fire Areas Address Signage	Address signage for residents and buildings in the high fire areas	Ongoing
Community Member	High fire areas	Other mitigation and preparedness projects		Insurance in High Fire areas	Resiliency aspects to assist with homeowners keeping insurance-- (IBHS Institute for Business and Home Safety) Wildfire Prepared Home programs	Proposed
YCRCD, Yolo County Flood Control and Water Conservation District, YC OES	High fire areas	D-Space and Home Hardening	Fuels Management	Yolo County Fuels Reduction Chipper Program	We are proposing a 5-year Chipper Program for the County of Yolo. This program would be scalable, and can change to a shorter This program would be targeted at helping residents in these High NVC Areas create 100' defensible space around their homes using the chopped woody debris from their property. As it has been demonstrated that at least 100' of defensible space around residential property helps save homes. Also, the chipper could be used to thin vegetation along access roads promoting safer access and evacuation routes for residents/fire personnel.	In Process 2022-2025

Project Lead or Project Proponent	Project Location	Project Type	Secondary Project Type	Project Name	Project Description	Status/ Time frame
YCRC + CALFIRE	High fire areas	Fuels Management		Yolo County High-risk fire areas fuel breaks	Collaborate with CAL FIRE to complete CEQA documentation and create fuel breaks and shaded fuel breaks in high-fire risk areas at priority locations throughout Yolo County.	Proposed
YCRC	High fire areas	Fuels Management	Community Education and Engagement	Yolo County PBA	We will achieve our goal of wildfire risk reduction through establishment of a PBA through five objectives: 1) hiring and training a prescribed burn coordinator to implement the grant and lead the development of the PBA, 2) recruiting local landowners and land manager members; 2) buying prescribed fire tools and equipment for PBA members to use for burning; 3) educating local residents about techniques and methods used for prescribed burning, including conducting live-fire trainings; and 5) supporting training needed to build local technical capacity to support the PBA and the region.	In process
Knight's Landing Fire Protection District	Knight's Landing	Evacuation and Access Planning	Fuels Management	County Road 116 Fuels Reduction	Trim vegetation along County Road 116, Knight's Landing FPD	Proposed
Knight's Landing Fire Protection District	Knight's Landing	Fuels Management		RD 108 Invasive Species Removal	Invasive Species Removal-Reclamation District 108	Proposed
Knight's Landing Fire Protection District	Knight's Landing	Fuels Management	Evacuation and Access Planning	State Hwy 45 and CR 98A Fuels Reduction	Veg work at Hwy 45 and County Rd 98A	Proposed
Madison FD	Madison	Other mitigation and preparedness projects		Madison Fire Station Structural Retrofit	Structural Retrofit of Madison FPD Fire Station	Proposed

Project Lead or Project Proponent	Project Location	Project Type	Secondary Project Type	Project Name	Project Description	Status/ Time frame
Madison FD	Madison	Other mitigation and preparedness projects		Water Supply Mapping	Map water supplies in MFPD	Proposed
Community Member	Rumsey	Fuels Management		Rumsey Canyon Oak Grove Fuel break	Protect oak grove at Rumsey Canyon Rd.	Proposed
CVERA&FSC	Rumsey	Evacuation and Access Planning		Rumsey Canyon Road Access Improvement	Evacuation and Access Planning/Fuels treatment: Rumsey Canyon Rd: Need access and clearance for emergency vehicles to park at residences during incidents.	In process - EA/Dodd funding
Community Member	Rumsey	Evacuation and Access Planning		Rumsey Canyon Road Emergency Access Signage	Signage for emergency access route at Rumsey Canyon Rd and a "No Parking" sign at Blue Heron Farm	Proposed
CVERA&FSC	Rumsey	Fuels Management		Rumsey Canyon Road Fuel Abatement	This project will reduce vegetation along Rumsey Canyon Road and improve access to ditch water for firefighting; improve ingress/egress; and create a fire break.	Proposed
Community Member	Rumsey	Evacuation and Access Planning		Rumsey Ditch Bridge Assessment and Access Improvements	Perform a bridge assessment along Rumsey Ditch; need bridge access/improvements for fire trucks. Capay Valley fire fighters will map potential crossing sites	
Community Member	Rumsey	Fuels Management		Rumsey Ditch Vegetation Management	Vegetation Clearing along Rumsey Ditch	Proposed

Project Lead or Project Proponent	Project Location	Project Type	Secondary Project Type	Project Name	Project Description	Status/ Time frame
Greater Winters CWPP	West Winters	Other mitigation and preparedness projects		Blue Ridge Prescribed Burning Program	Work with CalFire, State OES and the legislature to develop programs within the Blue Ridge area for prescriptive burning. From Greater Winters CWPP (2018)	Proposed
Audubon CA & CAL FIRE?	West Winters	Evacuation and Access Planning		Bobcat Ranch Access Gates	Fire access gates along Hwy 128 at Bobcat Ranch. (1) 16' gate and (2) braces on either side, northernmost gate to Bobcat Ranch on Hwy 128. Existing gate is too small for fire equipment.	Proposed
Audubon CA & CAL FIRE?	West Winters	Evacuation and Access Planning		Bray Canyon Fire Road	Fire road up Bray Canyon. This is separate from the CAL FIRE grader break along Highway 128, and would provide a N to S graded road break prior to each fire season.	Proposed
WWFSC	West Winters	Fuels Management		Brush and tree trimming along county and community roads for emergency exits and fire breaks	This project will clear all woody plants from road rights-of-way and pruned back overhanging tree branches and skirt up trees. This will improve evacuation safety and serve as a fire break.	In process- Early Action/Dodd funding
Greater Winters CWPP	West Winters	Other mitigation and preparedness projects		CAL FIRE – Compliant Street Signs	Install CAL FIRE-compliant street signs. From Greater Winters CWPP (2018)	Proposed

Project Lead or Project Proponent	Project Location	Project Type	Secondary Project Type	Project Name	Project Description	Status/ Time frame
Greater Winters CWPP	West Winters	Community Education and Engagement	Evacuation and Access Planning	County Emergency Notification System Annual Training	Provide updates and personal training regarding the county cell phone and landline emergency notification system yearly at FSC meeting. From Greater Winters CWPP (2018)	Can implement now under current programs Ongoing funding will be needed to continue
Audubon CA & CAL FIRE. Others.	West Winters	Evacuation and Access Planning	Other mitigation and preparedness projects	County Rd. 34: Bridge Repair or Replacement	Approximately .5 mile past the end of County Rd. 34, an historic metal bridge crosses an ephemeral Dry Creek. This bridge allows primary access for California Audubon Bobcat Ranch, a critical property for fire protection and prevention efforts involved in the Greater Winters CWPP. Significant repair or complete replacement of the bridge is proposed	Proposed
Greater Winters CWPP	West Winters	Evacuation and Access Planning	Community Education and Engagement	Evacuation Plan Development	Develop area-wide evacuation plan and identify vulnerable areas (from Greater Western Winters CWPP)	Proposed
Greater Winters CWPP	West Winters	Other mitigation and preparedness projects		Golden Bear Estates Roadway Firebreaks Project	Maintain the internal roads of Golden Bear Estates as firebreaks. From Greater Winters CWPP (2018)	Proposed
WWFSC	West Winters	Other mitigation and preparedness projects		Golden Bear Water Tank	4,000-gallon water tank at Golden Bear	Proposed
Greater Winters CWPP	West Winters	Community Education and Engagement	D-Space and Home Hardening	Hazardous Tree Removal Program	Help property owners assess and remove trees that present unusual fire danger. From Greater Winters CWPP (2018)	Proposed

Project Lead or Project Proponent	Project Location	Project Type	Secondary Project Type	Project Name	Project Description	Status/ Time frame
Greater Winters CWPP	West Winters	Fuels Management		Innovative Vegetation Management for Fire Risk Reduction	Be innovative in vegetation management including a) conduct prescribed burns; b) graze with livestock (cattle, goats, sheep); c) thin woody fuels; d) create fuel breaks e) remove eucalyptus. From Greater Winters CWPP (2018)	Proposed
Greater Winters CWPP	West Winters	Other mitigation and preparedness projects		Knox Boxes for Incoming Responders	KnoxBoxes (lockbox) for maps for incoming responders. From Greater Winters CWPP (2018)	Proposed
Greater Winters CWPP	West Winters	Other mitigation and preparedness projects	Evacuation and Access Planning	Looting Prevention	Prevent looting during evacuation events. From Greater Winters CWPP (2018)	Proposed
WWFSC Greater Winters CWPP	West Winters	Evacuation and Access Planning		Positas Road – Pleasant View Road Evacuation Route	Build evacuation route between Positas Rd and Pleasant View Rd	Proposed
	West Winters	Evacuation and Access Planning		Positas Road Improvement	Improve Positas Road; improve Bobcat utility road; grade roads	Proposed
Greater Winters CWPP	West Winters	Evacuation and Access Planning	Community Education and Engagement	Post-evacuation Procedures	Develop clearly understood, and reasonable procedures to allow residents to return to their homes after evacuation if they feel it is safe to return. From Greater Winters CWPP (2018)	Proposed
Greater Winters CWPP	West Winters	Other mitigation and preparedness projects		Pre-Attack Mapping	Create Pre-attack maps. From Greater Winters CWPP (2018)	Proposed

Project Lead or Project Proponent	Project Location	Project Type	Secondary Project Type	Project Name	Project Description	Status/ Time frame
WWFSC	West Winters	Fuels Management		Removal of eucalyptus and other fire-prone non-native tree woodlots	This project will remove woodlots established as windbreaks decades ago. The focus will be Eucalyptus and conifers in residential areas.	In process- Early Action/Dodd funding
CALFIRE	West Winters	Fuels Management		State Hwy 128 Annual Rx Burn	Perform ANNUAL Prescribed Burn along State Highway 128	Maintenance Phase
Audubon CA	West Winters	Fuels Management		State Hwy 128 Mechanical Vegetation Control	Mechanical vegetation control along Hwy 128 between Putah Creek and Bobcat Ranch and to the west. One season of shaded fuel break work along the last 1-1.5 miles of Hwy 128. Mostly consisting of limbing up oaks, chipping, and piling large dead and downed trees. Would require permit from CalTrans, and traffic control.	Proposed
Audubon CA	West Winters	Other mitigation and preparedness projects		State Hwy 128 Turnout Removal	Remove turnouts along Hwy 128 between Putah Creek and Bobcat to reduce people pulling over and igniting fires	Proposed
WWFSC	West Winters	Other mitigation and preparedness projects		Water Supply and Appurtenances Project	Augment water supply; add well access valves for fire fighters, install more hydrants (dry)	Proposed
WWFSC	West Winters	Fuels Management		Winters Area Creekside Fuel Reduction	Treat fuels along Dry and Putah Creeks leading to/through Winters	Proposed

Project Lead or Project Proponent	Project Location	Project Type	Secondary Project Type	Project Name	Project Description	Status/ Time frame
WWFSC	West Winters - consider scaling up to other areas	Evacuation and Access Planning	Community Education and Engagement	Broadband Upgrades for Emergency Notifications	Improve internet connection on Positas Rd to get emergency notifications	Proposed
Greater Winters CWPP	West Winters - consider scaling up to other areas	Evacuation and Access Planning	Community Education and Engagement	Emergency Route Visibility Project	Increase visibility on roads: Clearly mark evacuation/emergency access routes with reflective paint and signs; decrease hazards of road travel: Add reflective lines and markers to road edges. From Greater Winters CWPP (2018)	Proposed
Greater Winters CWPP	West Winters and other locations through the county	Community Education and Engagement	Evacuation and Access Planning	Annual Pre-attack Map Community Review	Once yearly at community FSC meetings: Engage homeowners to review and offer suggestions on pre-attack maps. Modified from Greater Winters CWPP (2018). YCFSC can report out countywide for coordination purposes	Can implement now under current programs Ongoing funding will be needed to continue
Community Member	Winters	Evacuation and Access Planning	Fuels Management	Moody Slough Road Edge	Long narrow road though grasslands, only one way out, narrow bridge	Proposed
Community Member	Winters	D-Space and Home Hardening	Fuels Management	Winters Westside Buffers	Including buffers within development plans- grassland around the north and west side of town- possibly with prescribed fire	Proposed

Project Lead or Project Proponent	Project Location	Project Type	Secondary Project Type	Project Name	Project Description	Status/ Time frame
West Plainfield FPD	Winters/Davis	Fuels Management		Chickahominy/Dry and Willow Slough Vegetation Management	Trim vegetation along Chickahominy/Dry Slough, Willow Slough (County Rd 95-98) (West Plainfield FPD)	Proposed
West Plainfield FPD	Winters/Davis	Evacuation and Access Planning	Fuels Management	Creekside Road/ Putah Creek Fuels Reduction	Trim vegetation along Creekside Road/Putah Creek (West Plainfield FPD)	Proposed
Willow Oak FPD	Woodland	Fuels Management	Evacuation and Access Planning	County Road 20 & CR 92C Fuels Reduction and Maintenance	Keep County Rd 20 and County Rd 92C clear of veg--protect homes along creek	Proposed
Willow Oak FPD	Woodland	Fuels Management	Evacuation and Access Planning	County Road 24/CR 25/Hillcrest Fuels Reduction	Hillcrest/CR 24, CR 25 Area has some fuels that need management	Proposed
Community Member	Yolo County	D-Space and Home Hardening	Community Education and Engagement	D-Space for Multi-family Units	Countywide defensible space assessment and hardening for multi-family units in the county	Proposed
Community Member OR possibly In Home Supportive Services	Yolo County	Community Education and Engagement	Evacuation and Access Planning	Inclusive Communication Evacuation Preparation and Whole Community Outreach	Provide information to Yolo County residents on evacuation preparation that includes all abilities, with a focus on high fire areas.	Proposed

Project Lead or Project Proponent	Project Location	Project Type	Secondary Project Type	Project Name	Project Description	Status/ Time frame
Community member	Yolo County	Other mitigation and preparedness projects		Smoke Resilience-Home HEPA Filters	Provide HEPA filters for low-income residents effected by smoke during wildfire events-- throughout Yolo County	In process
Community Member	Yolo County	Community Education and Engagement	Evacuation and Access Planning	Resilience Hub Planning	Resilience hubs (air conditioning, power and clean air refuge sites) for communities large and small	Proposed
Yolo Fire Protection District	Yolo FPD	Fuels Management		Cache Creek Nature Preserve Fuel Management	Cache Creek Nature Preserve at Stevenson's Bridge along Cache Creek	Proposed
Yolo Fire Protection District	Yolo FPD	Fuels Management	D-Space and Home Hardening	Cache Creek Private Property Defensible Space Project	Working with individual landowners in the Yolo Fire Protection District, clean up properties with high fuel loads and assist with defensible space.	Proposed
Yolo Fire Protection District	Yolo FPD	Fuels Management		Cache Creek Settling Basin Mowing	The edges of Cache Creek Settling Basin should be mowed	Proposed
Yolo Fire Protection District	Yolo FPD	Fuels Management		Gray's Bend/Dead River, Ridgecut Slough Mowing	Gray's Bend/Dead River, Ridgecut Slough and into Fremont Weir areas need regular mowing	Proposed
Zamora Fire Protection District	Zamora	Fuels Management		County Road 12A HFZ Eucalyptus Grove Vegetation Management	Vegetation management in HFZ in eucalyptus grove north of CR 12A	Proposed

Project Lead or Project Proponent	Project Location	Project Type	Secondary Project Type	Project Name	Project Description	Status/ Time frame
Zamora Fire Protection District	Zamora	Community Education and Engagement	Other mitigation and preparedness projects	Interstate 505 Fire Danger Signage	Replace fire awareness signs along Interstate 505 in high fire areas	Proposed

DRAFT

TABLE 2: Recent Yolo County Fire History from: CAL FIRE’s Fire and Resource Assessment Program (FRAP), 2020

YEAR	AGENCY	FIRE NAME	ALARM DATE	CAUSE	GIS ACRES	Multiple Counties
2014	CDF	MONTICELLO	7/04/2014	Fireworks	6599.39	Yes
2015	CDF	WRAGG	7/22/2015	Vehicle	8049.33	Yes
2015	CDF	ROCKY	7/29/2015	Miscellaneous	69438.20	Yes
2015	CDF	JERUSALEM	8/9/2015	Unknown/unidentified	25118.40	Yes
2016	CDF	CREEK	6/26/2016	Unknown/unidentified	171.12	
2016	CDF	DUNNIGAN	7/15/2016	Equipment Use	77.78	
2016	CDF	COLD	8/2/2016	Unknown/unidentified	5730.07	Yes
2017	CDF	WINTER	7/6/2017	Unknown/unidentified	2366.23	Yes
2018	CDF	MADISON	6/1/2018	Unknown/unidentified	12.09	
2018	CDF	COUNTY	6/30/2018	Electrical	89831.10	Yes
2018	CDF	EIGHTY-EIGHT	7/18/2018	Unknown/unidentified	822.23	
2019	CDF	SAND	6/8/2019	Lightning	2422.02	Yes
2019	LRA	CACHE	11/25/2019	Unknown/unidentified	1	
2020	CDF	COUNTY ROAD 2	6/6/2020	Unknown/unidentified	1.24	
2020	CDF	DUNNIGAN	6/17/2020	Powerline	6.13	
2020	CDF	CACHE	7/6/2020	Campfire	44.80	
2020	CDF	LAMB	7/8/2020	Miscellaneous	1.71	
2020	CDF	HEATHER	7/8/2020	Miscellaneous	1.91	
2020	CDF	DUNNIGAN	7/10/2020	Equipment Use	1.85	
2020	CDF	HENNESSEY	8/17/2020	Lightning	305352.00	Yes
2020	CDF	SALT	10/5/2020	Vehicle	86.66	Yes
2021	CDF	COUNTY	5/8/2021	Powerline	2.85	
2021	CDF	MOODY	5/16/2021	Miscellaneous	20.24	
2021	CDF	CREEK WEST	6/9/2021	Arson	18.52	
2022	LRA	DUNNIGAN	5/20/2022	Under investigation	1,000	

Complete Fire History in Yolo County

This information will be available on the hub site.

Fire-Related Planning Resources

Subject	Resource Name	Entity	Description	URL
Demographics	Rural Community Investment Program	Yolo County	This web page contains 2 page "grant eligibility" overviews for ten rural Yolo County Communities. The overviews provide basic statistics, census information, Disadvantaged Community Status, and an aerial photo	https://www.yolocounty.org/government/general-government-departments/county-administrator/rural-community-investment-program
Fire Planning	California's Forests and Rangelands: 2017 Assessment	Fire and Resource Assessment Program, CAL FIRE	This Assessment documents a number of serious challenges and threats to forest and rangelands that are impacting economic and environmental sustainability. In recent years, the frequency and severity of pest and wildfire events are unlike what we have experienced in the past, forcing us to reexamine our land and fire management policies and practices. While the Assessment raises serious concerns, it also highlights positive trends and successful efforts that could provide the basis for a sustainable future.	https://frap.fire.ca.gov/media/4babn5pw/assessment2017.pdf
Fire Planning	CWPP	UC Davis	UC Davis Community Wildfire Protection Plan TBD	
Fire Planning	Fire Protection Agencies Municipal Service Review - Sphere of Influence Report	Yolo LAFCO	This web page provides links to the 2022 MSR-SOI for Yolo County Fire Protection Districts.	https://www.yololafco.org/fire-protection-districts
Fire Planning	Preliminary Programmatic Environmental Assessment and Finding of No Significant Impact	BLM	BLM's plan to expedite fuels reduction treatments and fire protection efforts near high fire-risk areas on public lands in 44 counties throughout California and northwest Nevada. This initiative is designed to streamline on-the-ground projects to reduce hazardous fuels and double down on efforts to protect local communities.	https://eplanning.blm.gov/eplanning-ui/project/2016583/570
Fire Planning	Rules & Compliance: Burning	Yolo-Solano Air Quality Management District	This web page provides rules associated with indoor, agricultural, rural yard, and prescribed burning.	https://www.yoosmd.org/rules-compliance/burning/
Fire Planning	Sonoma-Lake-Napa Unit 2021 Strategic Fire Plan	CAL FIRE	LNU's Fire Plan goals and objectives have been developed to continue building resilience and resistant to damaging wildfire, while also recognizing fire's beneficial aspects to forestry and environment practices.	https://osfm.fire.ca.gov/media/lpaffiu/2021_lnu_fireplan.pdf

Subject	Resource Name	Entity	Description	URL
Fire Planning	Strategic Fire Plan for California	CAL FIRE	This web page links to the 2018 Strategic Fire Plan. The 2018 Plan reflects CAL FIRE's focus on (1) fire prevention and suppression activities to protect lives, property, and ecosystem services, and (2) natural resource management to maintain the state's forests as a resilient carbon sink to meet California's climate change goals and to serve as important habitat for adaptation and mitigation. Unit Fire Plans can be accessed from this web page. Other resources are also available, including Community Wildfire Protection Plans from around the state, a list of Communities at Risk, and FireWise Communities.	https://osfm.fire.ca.gov/divisions/community-wildfire-preparedness-and-mitigation/fire-plan/
Fire Planning	Title 24 Development	CA Office of the State Fire Marshall	The web page provides links to current CA Building Standards Code relevant to fire safety	https://osfm.fire.ca.gov/divisions/code-development-and-analysis/title-24-development/
Functional Needs Planning	Emergency Preparedness Guide/Toolkit for Individuals with Disabilities	CA Office of Emergency Services	This guide describes actions and considerations that individuals with disabilities can use to increase preparedness before, during, and after disasters	https://www.dor.ca.gov/Content/DorIncludes/documents/Misc/Cal%20OESDOR%20-%20AFN%20Disaster%20Preparedness%20Guide.pdf
Functional Needs Planning	Integrating Access and Functional Needs within the Emergency Planning Process: Best Practices for Stakeholder Inclusion	CA Office of Emergency Services	The purpose of this paper is to ensure emergency managers recognize the need, and understand the process, of integrating whole community partners as they develop their emergency plans; to underscore the value of identifying access and functional needs related considerations before, during, and after disasters; and to provide a blueprint for engaging Community-based Organizations (CBOs) throughout the planning cycle	https://www.caloes.ca.gov/wp-content/uploads/AFN/Documents/AFN-Library/Cal-OES-Best-Practices-for-Stakeholder-Inclusion-June-2020.pdf
Functional Needs Planning	Planning for an Emergency: Strategies for Identifying and Engaging At-Risk Groups	Center for Disease Control	This document introduces the concept of at-risk groups (i.e., socially vulnerable populations). It also gives examples of approaches and tools that can be used alone or in combination to identify social vulnerabilities within your community. These approaches and tools can help you, as an emergency manager, identify, plan for, and assist the at-risk groups or socially vulnerable populations within your community.	https://www.cdc.gov/nceh/hsb/disaster/atriskguidance.pdf
Land Management	Berryessa Snow Mountain Management Plan	Bureau of Land Management	TBD	

Subject	Resource Name	Entity	Description	URL
Land Management	Bobcat Ranch HMP	Audubon California	Audubon's Habitat Management Plan the Audubon Conservation Ranching Initiative, which is a market-based conservation approach that offers incentives for good grassland stewardship through a certification label on beef products.	https://ca.audubon.org/about-us/bobcat-ranch
Planning & Policy	City of Davis General Plan	City of Davis	This web page provides links to General Plan sections	https://www.cityofdavis.org/city-hall/community-development-and-sustainability/planning-and-zoning/general-plan
Planning & Policy	City of Winters General Plan	City of Winters	This web page provides links to General Plan sections	https://www.cityofwinters.org/city-of-winters-general-plan/
Planning & Policy	County of Yolo 2030 Countywide General Plan	Yolo County	This web page provides links to all sections of the General Plan including the Land Use and Community Character Element, Health and Safety Element, specific Area Plans, Climate Action Plan, the Multi-Jurisdictional Hazard Mitigation Plan, and Disadvantaged Unincorporated Communities Assessment	https://www.yolocounty.org/government/general-government-departments/county-administrator/general-plan/adopted-general-plan
Planning & Policy	General Plan 2035	City of West Sacramento	This web page provides links to General Plan sections	https://www.cityofwestsacramento.org/government/departments/community-development/planning-division/general-plan-2035
Planning & Policy	General Plan Update 2035 City of Woodland	City of Woodland	This web page provides links to General Plan sections	https://www.cityofwoodland.org/563/General-Plan-2035
Planning & Policy	Yolo County Strategic Plan	Yolo County	This document is a table that contains county community goals, strategies, and desired outcomes. Disaster Emergency Preparedness & Resiliency and Fire Protection are two topics addressed.	https://www.yolocounty.org/home/showpublisheddocument/69114/637545037720100000
Planning & Policy	Yolo County Sustainability Plan	Yolo County Department of Community Services	The Plan is intended to serve as an environmental roadmap for decisionmakers and community members. It describes foundational existing policies and programs that support sustainability and identifies opportunities to make Yolo County more sustainable.	https://www.yolocounty.org/home/showpublisheddocument/70101/637619444642370000