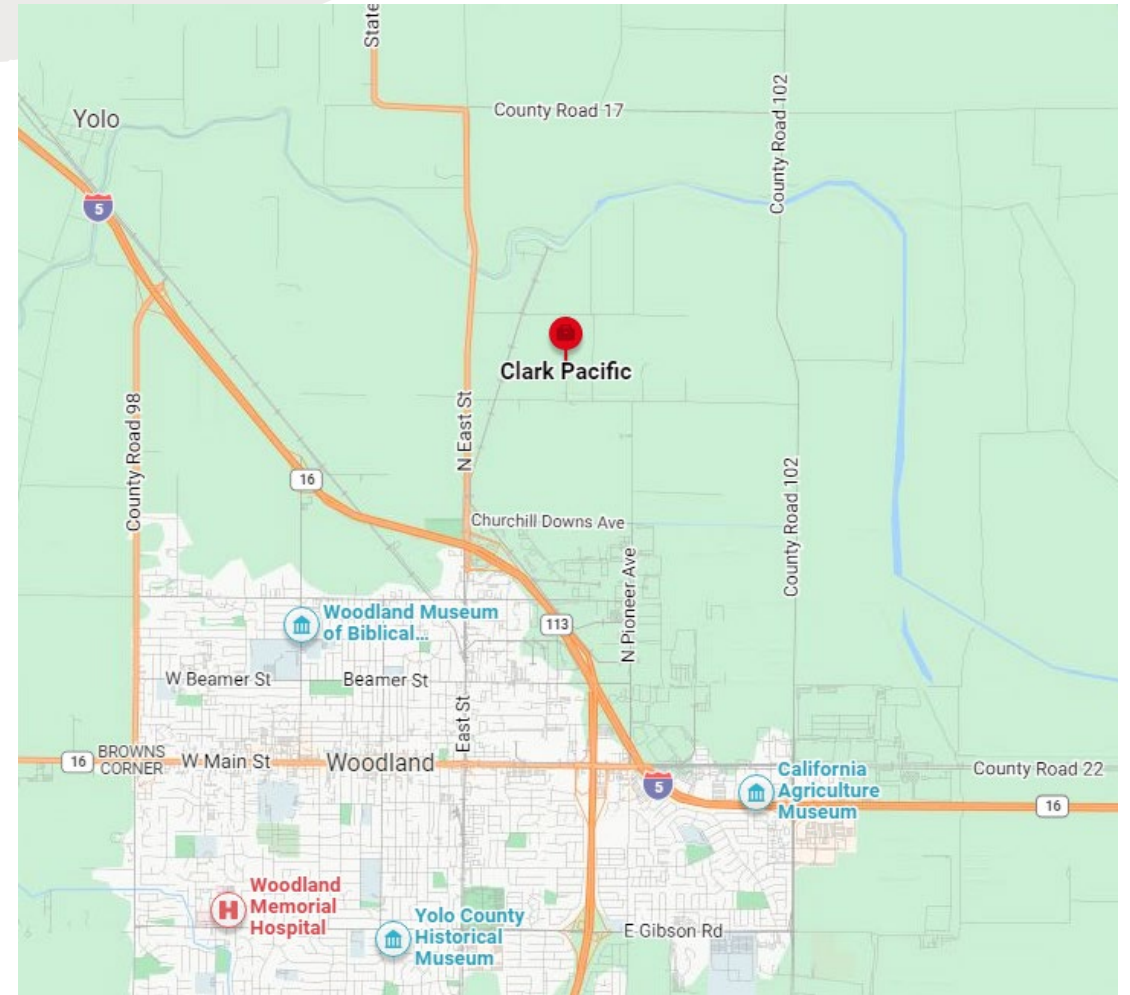


ZF2023-0005 CLARK PACIFIC GENERAL PLAN AMENDMENT AUTHORIZATION REQUEST

September 12, 2023

Clark Pacific is seeking authorization to further study a General Plan Amendment (GPA) to allow for an expansion of industrial uses at its Woodland Plant.

Amendments to the General Plan proposed by private parties must first be authorized by the Board of Supervisors for further study (County Code Section 8-2.223)



CLARK PACIFIC'S JOURNEY TO UNINCORPORATED YOLO COUNTY

2008:

GPA, Rezone, Use Permit,
and DA approvals allow Clark
Pacific to occupy a 90-acre
portion of the former
'Spreckels' site for industrial
operations



CLARK PACIFIC'S JOURNEY TO UNINCORPORATED YOLO COUNTY

2009:

2030 Countywide General Plan adopted, which contemplated additional industrial growth at the 'Spreckels' site

2012:

Clark Pacific granted a Rezone, Tentative Map, and DA Amendment to expand industrial operations

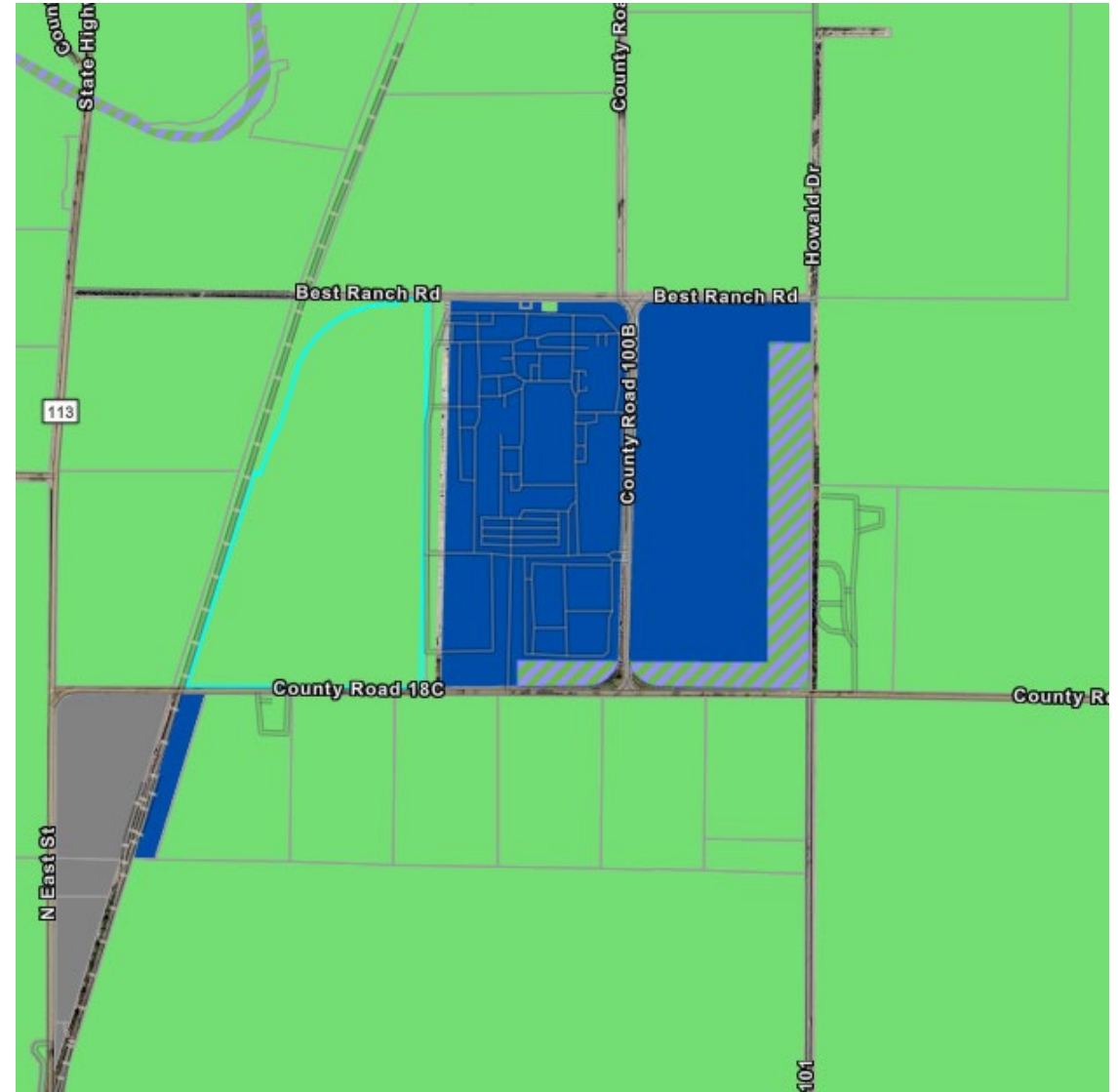


PROPOSED GENERAL PLAN AMENDMENT

2023:

Clark Pacific is seeking a GPA to change the land use designation on APN: 027-250-019 from Agriculture (AG) to Industrial (IN).

Expansion of Clark Pacific's industrial uses would also require a Rezone from Agricultural Intensive (A-N) to Heavy Industrial (I-H).





Best Ranch Rd

Best Ranch Rd

113

County Road 100B

County Road 18C

County Road 18C

N East St

Howa

RECOMMENDED ACTION

- Hold a public hearing, receive presentation and accept public comment
- Consider Clark Pacific's proposal to change the land use designation on a 76.67-acre parcel immediately adjacent to existing operations to facilitate expansion of industrial uses
- Approve the request for authorization to further study a General Plan Amendment, Rezone, and Tentative Map

Note: Authorization would neither approve an amendment nor commit the Board to a future approval, but would allow a formal application to be processed and environmentally reviewed