

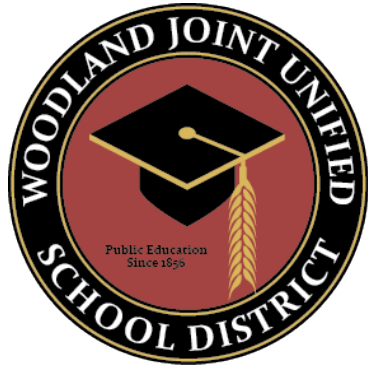


# Yolo County K-12 School Partnership Program

Improving Mental Health for School-Age Youth

Yolo County Board of Supervisors  
September 26, 2023





# Yolo County OFFICE OF EDUCATION



*Helping Others Soar*



## DJUSD

DAVIS JOINT UNIFIED

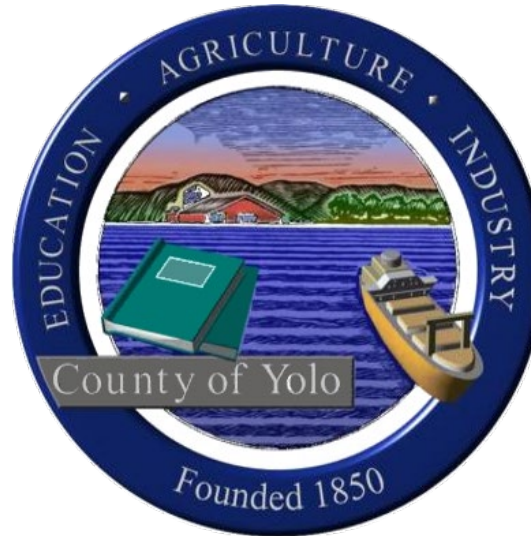
# K-12 SCHOOL PARTNERSHIP PROGRAM



## RISE, Inc.



WASHINGTON  
UNIFIED  
SCHOOL  
DISTRICT  
WEST SACRAMENTO



## CommuniCare

HEALTH CENTERS

a california *health+* center

# ESPARTO UNIFIED SCHOOL DISTRICT



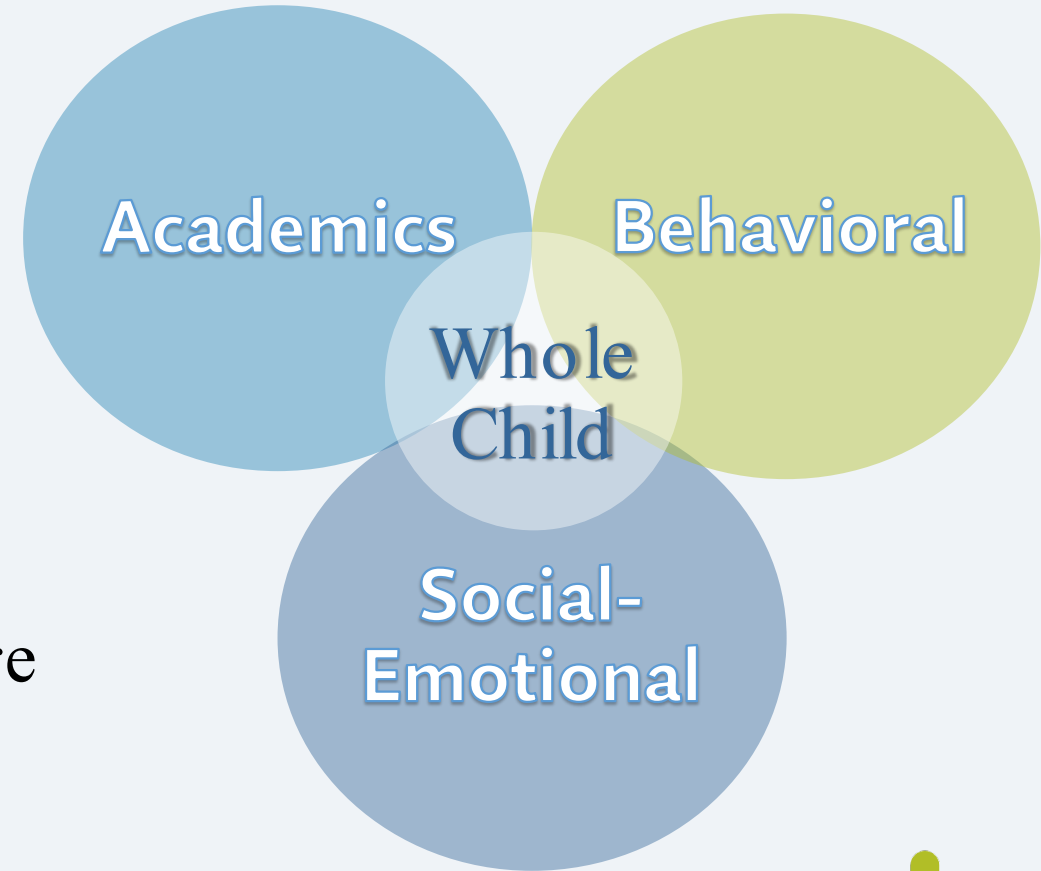
# Origins of K-12 School Partnership

- In 2004, California voters approved Prop. 63, or Mental Health Services Act (MHSA), which implemented a 1% income tax and raises \$2 billion annually to support mental health.
- In 2019, the state budget allocated \$40 million in one-time funding for school-county mental health partnerships (Mental Health Student Services Act Grant).
- In 2020-2021, Yolo County was awarded \$5+ million in grant funds to implement and grow this partnership over five years.



# Interconnected Systems Framework

- Research and practice confirm that a whole child approach to education helps students' comprehensive needs.
- The whole child approach incorporates the academic, behavioral and social-emotional development of the whole child.
- School-based mental health providers are integrated into the school environment.



# Tiered Mental Health Framework

## Intensive Intervention

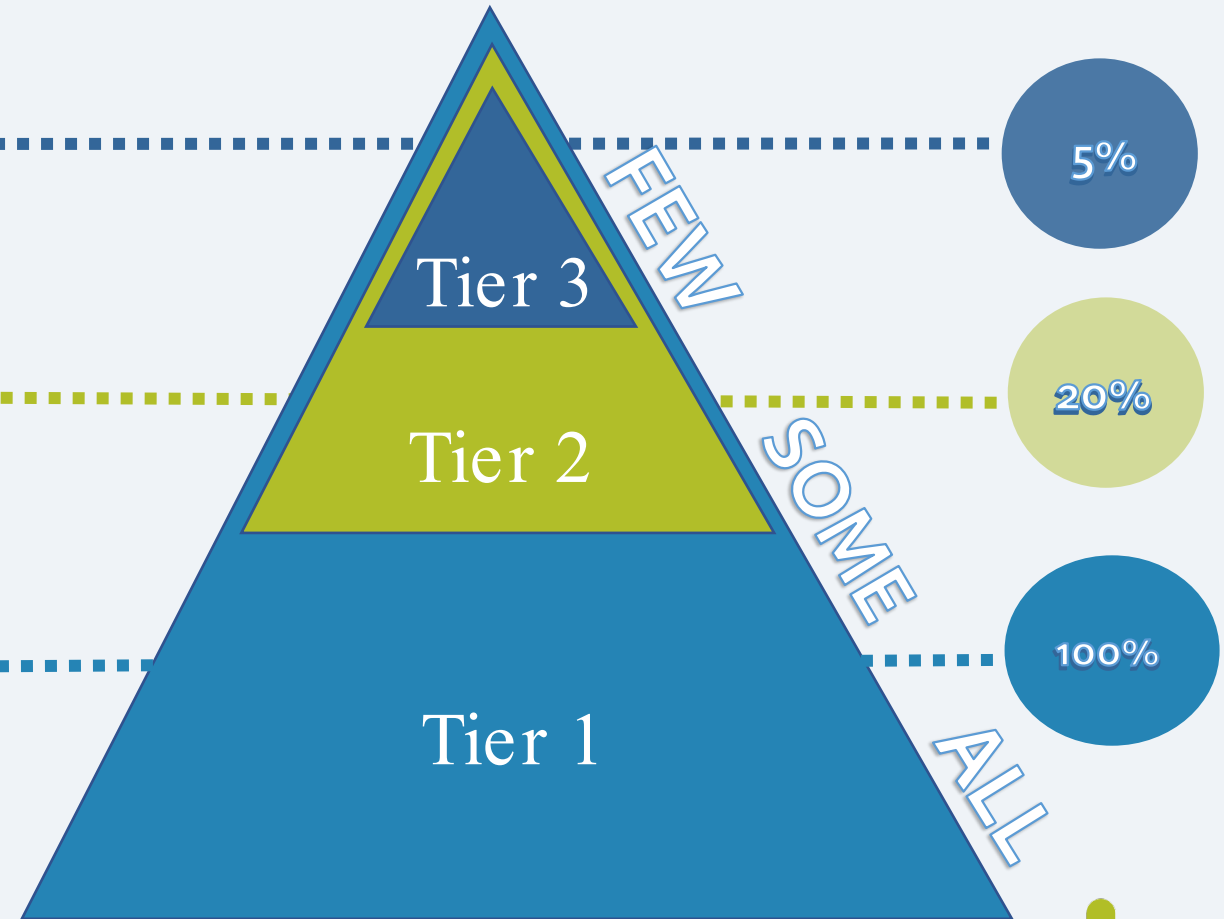
- Individualized therapeutic interventions for youth with significant concerns
- Rapid linkage to long-term and intensive care

## Targeted Intervention

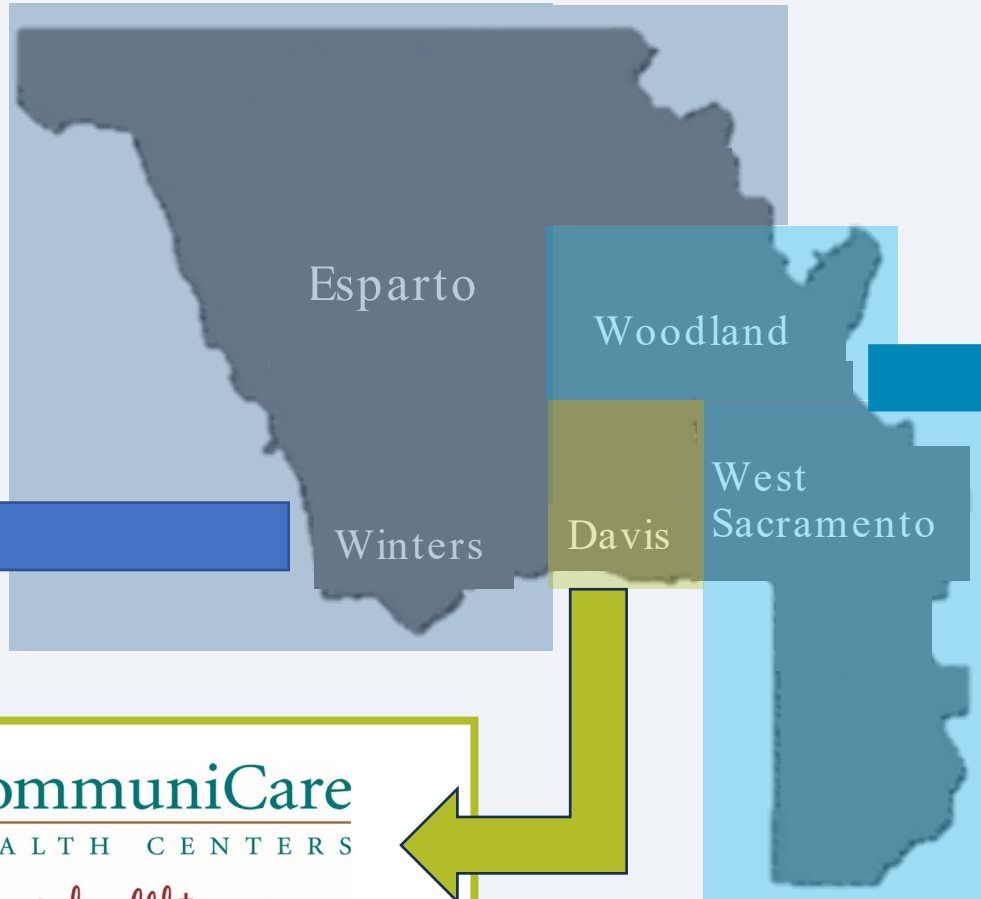
- Mental health screening for youth with at-risk behavior
- Expanding school-based mental health interventions to include group interventions
- Resource referrals

## School-Wide Intervention

- Awareness and wellness activities
- Training and coaching staff
- Developing youth systems of mutual support
- Stigma reduction

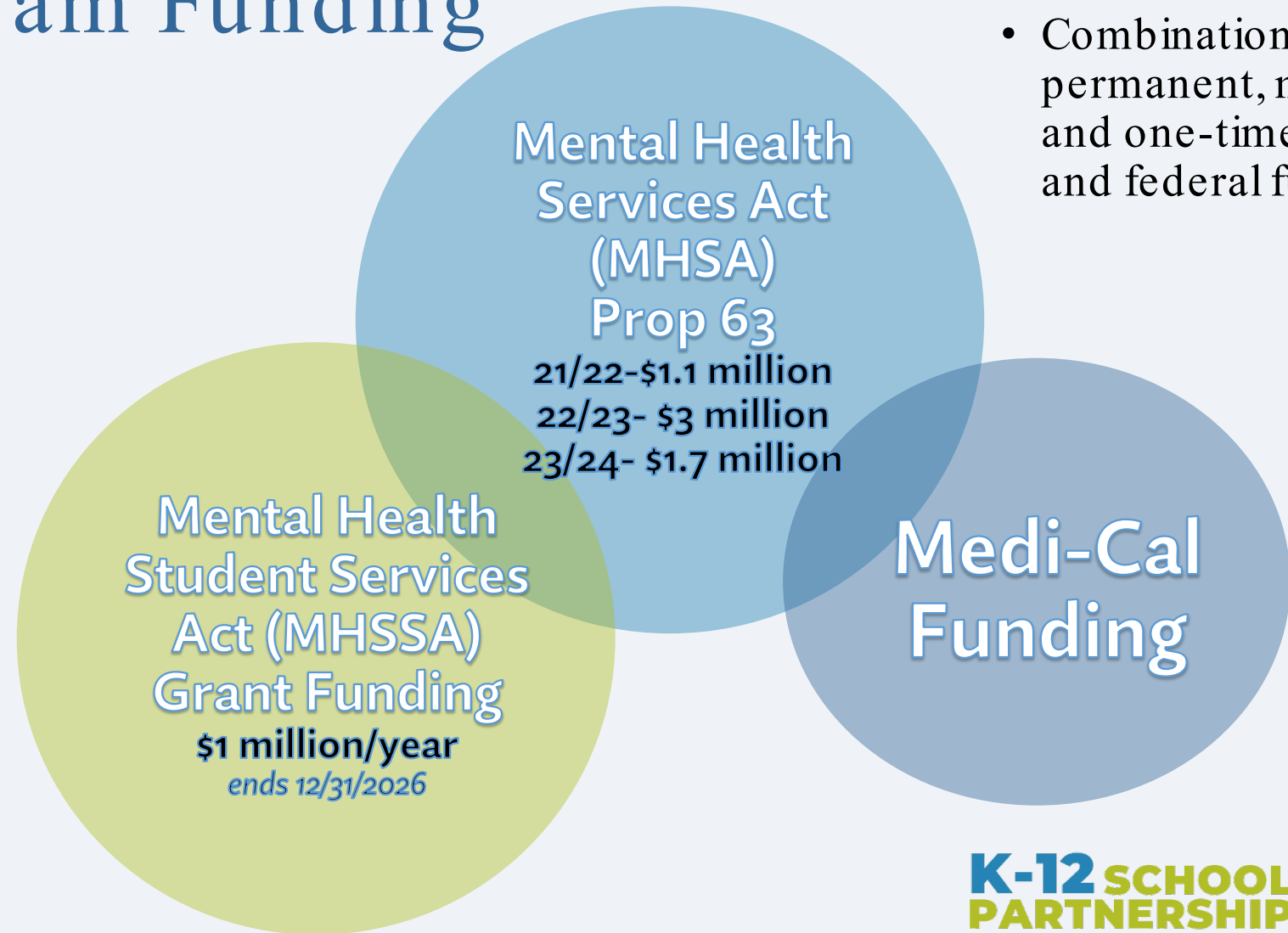


# Program Regional Providers



# Current Program Funding

- One of goals of the K-12 School Partnership Program is to identify funding to make the program **permanent**, **sustainable** and **collaborative**.



- Combination of permanent, matching and one-time state and federal funding

## Contract Budgets

FY21/22\*: \$1,260,247

FY 22/23: \$3,808,705

FY 23/24: \$3,218,088

MHSSA Total Award: \$5,079,602 (expires 12/31/26)

Balance: \$3,101,736

\*Partial Fiscal Year

## Funding Details



- School Partnership Grants
- CSPP Implementation
- ELOP
- Universal Fee Schedule (NSMHS)
- MH MAA

## Future Opportunities

# Program Timeline

