

BOARD OF SUPERVISORS  
Yolo County, California

FILE:

ROUTING	
NAME	TO/FR
Dir.	
Asst. Dir.	
Pl. Dir.	
Pub. Dir.	
S. & M.	
R/W	
Traf.	
Bus.	

FILE:

TO: County Counsel  
Public Works

ENTRY: #1  
EXCERPT OF MINUTE ORDER NO. 81-317, ITEM NO. 17 OF THE BOARD OF SUPERVISORS  
MEETING FOR April 21, 1981 AS INDICATED BELOW:

MOTION: Marchand SECOND: Cameron AYES: Thompson, Marchand, Cameron, DeMars.  
ABSENT: Black.

12. The Board of Supervisors, sitting as the CETA Prime Sponsor of the Governing Body, authorized the County Administrative Officer to advertise and circulate the Request for Proposal to solicit bids for an audit of the Yolo County CETA program.
13. The Board of Supervisors, sitting as the CETA Prime Sponsor of the Governing Body, approved and authorized the Chairman to sign a letter to Congressman Vic Fazio seeking support for the CETA Title IID public service employment program and the Title IV youth programs:
14. Authorized Yolo County participation in the Sacramento Municipal Utility District (SMUD) refuse to energy study, recommended by the Solid Waste Technical Committee.
15. Adopted and authorized the Chairman to sign Resolution No. 81-66, to appropriate the new unanticipated revenue in the amount of \$106,634.00, for the Transportation Budget (299-5) Paratransit.
16. Adopted and authorized the Chairman to sign Resolution No. 81-67, authorizing a mid-year appropriation for County Road 31 project between County Roads 95 and 96.
- Vice-
17. Adopted and authorized the/Chairman to sign Resolution No. 81-68, providing for a 30-foot school loading zone at 705 Omega Street in Esparto, California.
18. Adopted and authorized the Chairman to sign Resolution No. 81-69, Acceptance of Parcel Map No. 2911, SMF Corporation.
19. Approved the Wildlife Conservation Board's proposed project to resurface the Clarksburg Boat Ramp parking area.

RECEIVED  
APR 27 1981

YOLO COUNTY  
DEPT.  
OF PUBLIC WORKS

APR 24 1981

PETER McNAMEE, Clerk

RESOLUTION NO. 81-68

By Paula M. Cooper, Deputy

(School Loading Zone - 705 Omega Street - Esparto, California )

WHEREAS, Section 22500 through 22521 of the Vehicle Code of the State of California authorizes restrictions of parking or standing of vehicles on certain streets or highways, or portions thereof, during all or certain hours of the day, and;

WHEREAS, Section 4-3.107 of the Yolo County Code provides for establishment of parking restrictions in certain designated Areas, and;

WHEREAS, the Director of Public Works has made a recommendation to this Board recommending restricted parking at the location designated herein.

NOW, THEREFORE, BE IT RESOLVED AND DECLARED that Parking shall be restricted as provided in Section 4-3.107 of the Yolo County Code at the following location and subject to the regulations in Section 21458 of the Vehicle Code of the State of California as follows:

No parking School Loading Zone.

Omega Street in Esparto on the West side for a distance of thirty (30) feet located at 705 Omega Street.

PASSED APPROVED AND ADOPTED by the Board of Supervisors of the County of Yolo, State of California, on this 21 day of April, 1981, by the following vote:

AYES: Thompson, Marchand, Cameron, DeMars.

NOES None

ABSENT: Black

James R. DeMars  
VICE-CHAIRMAN OF THE BOARD OF SUPERVISORS  
COUNTY OF YOLO, STATE OF CALIFORNIA

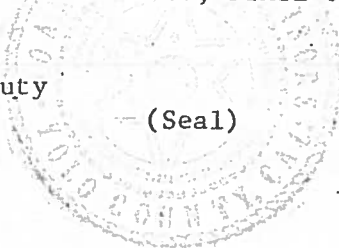
ATTEST:  
PETER McNAMEE,  
YOLO COUNTY CLERK

By Paula M. Cooper, Deputy

APPROVED AS TO FORM:

[Signature]  
County Counsel

(Seal)

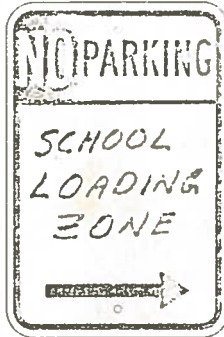




R7-1  
12" x 18"

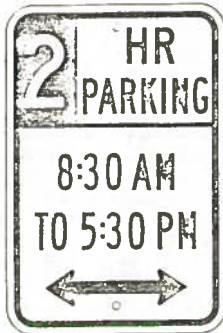


R7-5  
12" x 18"

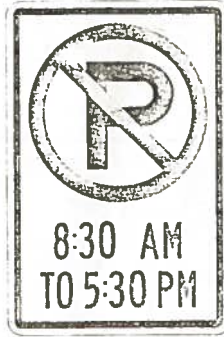


R7-107  
12" x 18"

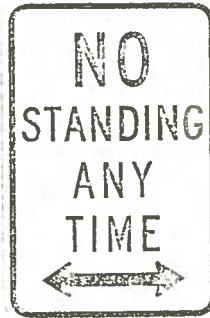
(CR 26A) - OR comparable  
HR 313



R7-108  
12" x 18"

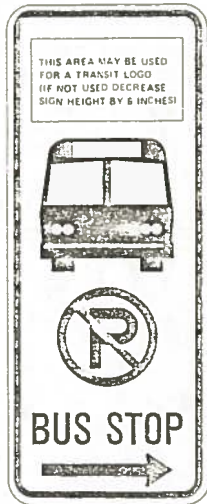


R7-2a  
12" x 18"



R7-4  
12" x 18"

Yellow Curb Marking  
(30')  
White



R7-107a  
12" x 30"



R7-8  
12" x 18"

2B-24

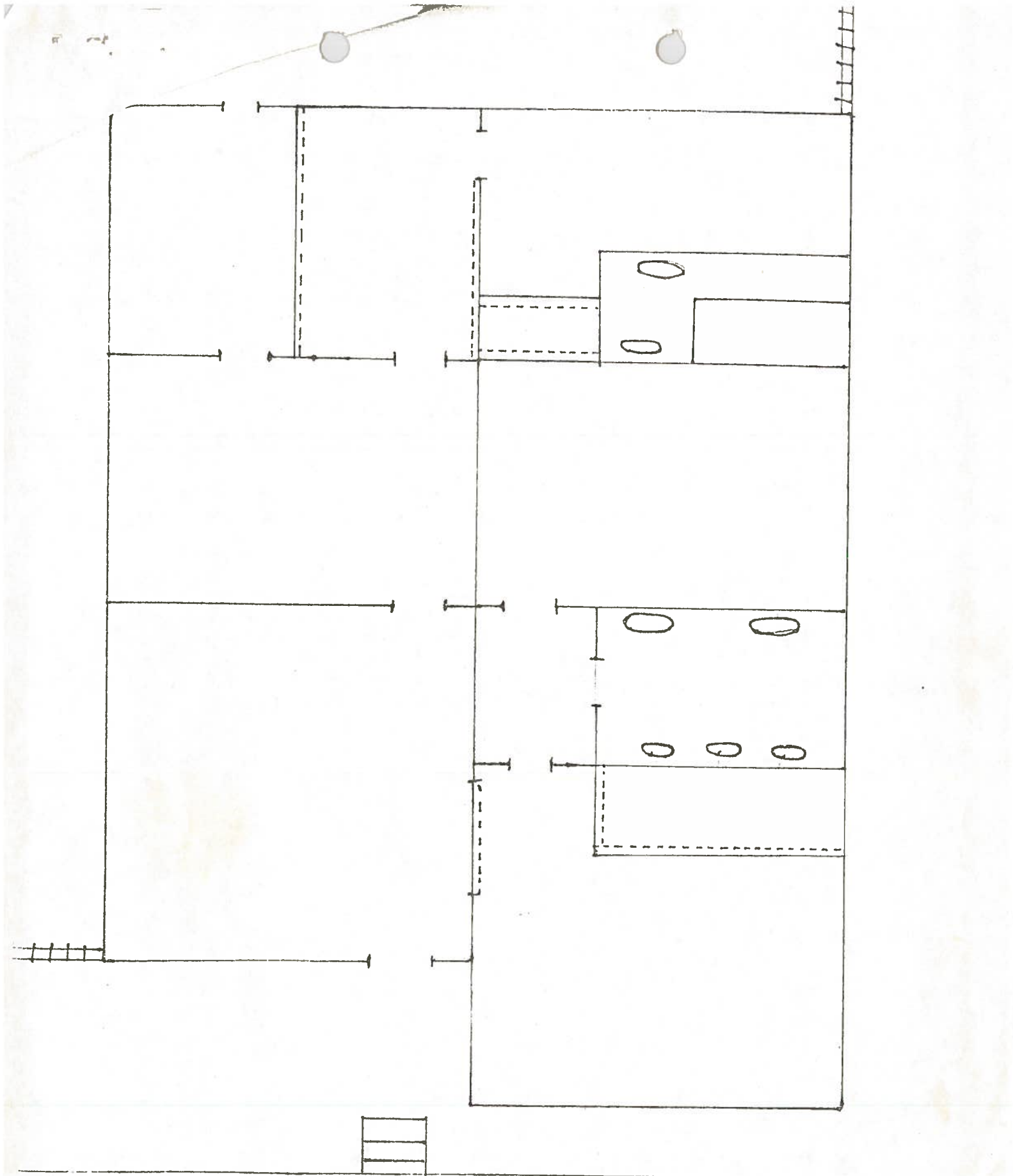


R7-201a  
12" x 6"

Rev. 12/79

Espartero Child Care Center  
705 Omega Street  
30' Loading Zone

5-10-81  
134 Perry



LOADING ZONE

30' school  
Loading Zone

CC# 17

ROUTING	
NAME	TO/INITIALS
Dir.	
Dep. Dir.	
Asst. Dir.	
Pl. & Des.	
Pub. Ser.	
S & M	
H/W	
Traf.	
BUS	

April 21, 1981

Honorable ROBERT BLACK, Chairman, and  
Members of the Board of Supervisors

Subject: Resolution for a School Loading Zone at 705 Omega Street, Esparto

**Discussion:**

The Foundation Center For Phenomenological Research, Inc. which has been operating the Esparto Child Care Center in Esparto for over ten years, moved to new quarters at the end of 1980. The new center located at 705 Omega Street is provided by the Esparto Unified School District, and has front street access comparable to a local residential lot. With this limited access the Center has found the loading and unloading of children to be impacted by local parking in front of the facility. For this reason and misinformation that they were required to have a Loading Zone for Licensing purposes the Center requested a Loading Zone for their entire frontage. It is apparent that a Loading Zone is needed to minimize congestion and promote the safety of the children; however a loading zone throughout the entire frontage would not be warranted.

**Recommendation:**

IT IS THEREFORE RECOMMENDED that your Board adopt the attached Resolution to provide a 30 foot School Loading Zone at 705 Omega Street in Esparto.

Respectfully Submitted,

LLOYD H. ROBERTS,  
Director of Public Works

RL/LHR/r1c

**Transmittal:**

Resolution

1  
2  
3  
4  
5  
6  
7  
8  
9  
10  
11  
12  
13  
14  
15  
16  
17  
18  
19  
20  
21  
22  
23  
24  
25  
26  
27  
28

RESOLUTION NO. 81-

(School Loading Zone - 705 Omega Street - Esparto, California )

WHEREAS, Section 22500 through 22521 of the Vehicle Code of the State of California authorizes restrictions of parking or standing of vehicles on certain streets or highways, or portions thereof, during all or certain hours of the day, and;

WHEREAS, Section 4-3.107 of the Yolo County Code provides for establishment of parking restrictions in certain designated Areas, and;

WHEREAS, the Director of Public Works has made a recommendation to this Board recommending restricted parking at the location designated herein.

NOW, THEREFORE, BE IT RESOLVED AND DECLARED that Parking shall be restricted as provided in Section 4-3.107 of the Yolo County Code at the following location and subject to the regulations in Section 21458 of the Vehicle Code of the State of California as follows:

No parking School Loading Zone.

Omega Street in Esparto on the West side for a distance of thirty (30) feet located at 705 Omega Street.

PASSED APPROVED AND ADOPTED by the Board of Supervisors of the County of Yolo, State of California, on this        day of April, 1981, by the following vote:

AYES:

NOES

ABSENT:

ATTEST:  
PETER McNAMEE,  
YOLO COUNTY CLERK

By \_\_\_\_\_, Deputy

\_\_\_\_\_  
CHAIRMAN OF THE BOARD OF SUPERVISORS  
COUNTY OF YOLO, STATE OF CALIFORNIA

(Seal)

APPROVED AS TO FORM:

\_\_\_\_\_  
County Counsel