



# County Real Estate Update

# Current Holdings

- County owns 131 parcels totaling 4,073 acres.
  - Parks consists of 1,885 acres, followed by landfill for 1,080 acres.
- County has interests (leases or other) in 19 parcels totaling ~450 acres.
  - Consists of parks and libraries.



# Staff Planning Guiding Documents

- Staff review land holdings and new opportunities that are consistent with the following Board approved plans:
  - County's General Plan 2030 (adopted 2009)
  - County's Parks & Open Space Master Plan (adopted 2006)
  - County's Cache Creek Parkway Plan & Resources Management Plan (adopted 2019)
  - County's Community Area Plans (adopted various years)
  - County's Library Facilities Master Plan (adopted 2017)
  - County's Strategic Space Utilization Study (adopted 2014)





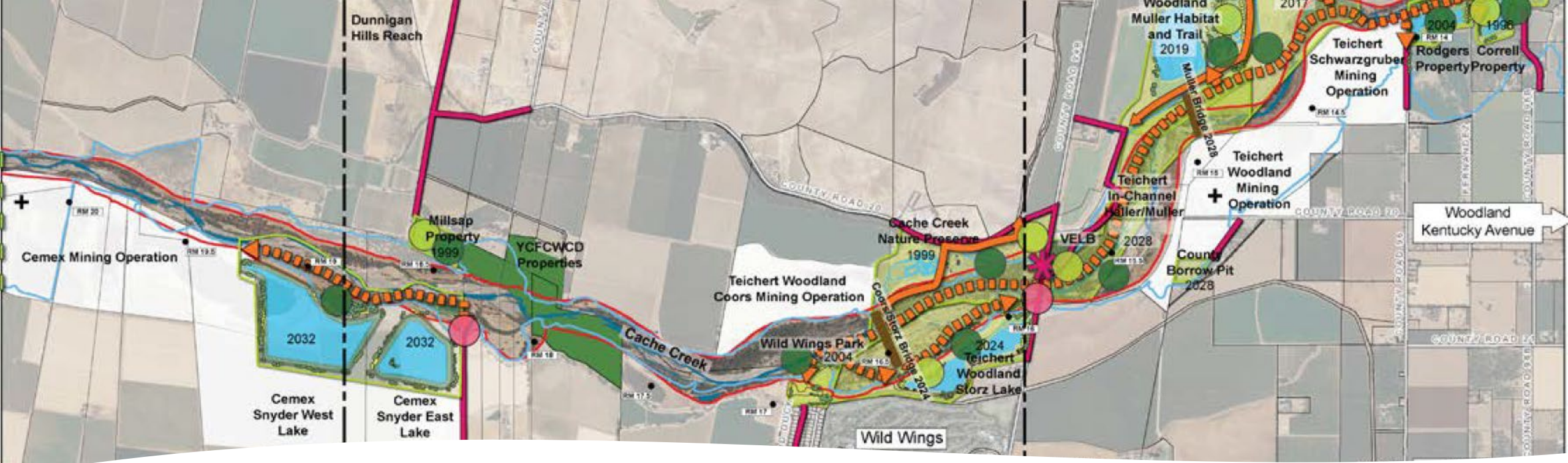
# Staff Working Principles – Land for Facilities

- Improve utilization of underused land
  - Explore partnerships to develop parcels that are not adjacent to key county campuses
  - Explore consolidation of county functions onto underutilized core county campuses
- Identify focus areas for future land acquisitions for community facilities to serve current and future populations.
- Leverage opportunities to acquire land through federal and state surplus land properties.

# Staff Working Principles - Parks

- Obtain parkland to meet County goal of 5 acres of community parkland per 1,000 residents.
- Explore obtaining parcels when adjacent to existing parkland or to enable access to existing parkland.
- Explore obtaining parcels that provide distinct qualities for public access or open space preservation.





# Staff Working Principles – Cache Creek Parkway

- Self-funded, integrated system of trails and recreational areas (14.5 miles /1,889 acres)
- Recreation “nodes” every 2 miles
- Seeks balance of:
  - Floodway / Channel Stability
  - Water Resources
  - Biological Resources
  - Open Space & Recreation
  - Aggregate and Agricultural Resources



## Current Staff Efforts

- Obtain northern portion of Pai Hawk Ranch parcel (District 3)
- Dispose Davis-Area Putah Creek Bike Path Parcels (District 4)
- Obtain from City of Davis the Walnut Park Library parcel (District 4)
- Exploring parcel for park (District 1)
- Research possible open space parcel (District 3)
- Seeking Federal Surplus parcel for civic use (District 5)
- Exploring transferring from State to County:
  - Putah Creek Fishing Access (District 2)
  - Knights Landing Boat Launch (District 5)
- Exploring a mixed-use development for 5<sup>th</sup> & Oak/6<sup>th</sup> & Cross (District 3)

## Next Steps

- Provide feedback to staff on current staff efforts
- Provide direction to staff on future interest/policy goals
- Staff will work with appropriate Board committee(s)